

PROSPEED TUNDRA RCF THROTTLE BODY ADAPTER KIT



NOTES:

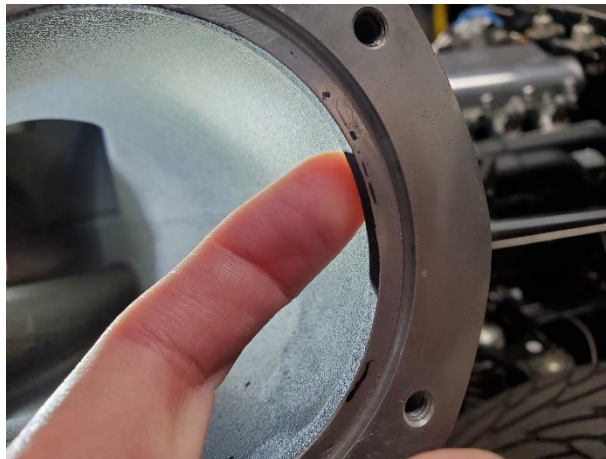
- REQUIRES "PORTNG" OF THROTTLE BODY OPENING, IF YOU DON'T HAVE THE REQUIRED TOOLS FOR THIS, ONCE YOU HAVE THE SNOUT OFF ANY FABRICATION OR CYLINDER HEAD SHOP CAN DO THIS FOR YOU.
- TUNING IS REQUIRED AFTER INSTALLTION, FAILURE TO DO SO CAN CAUSE RUNNING ISSUES AND ENGINE DAMAGE.

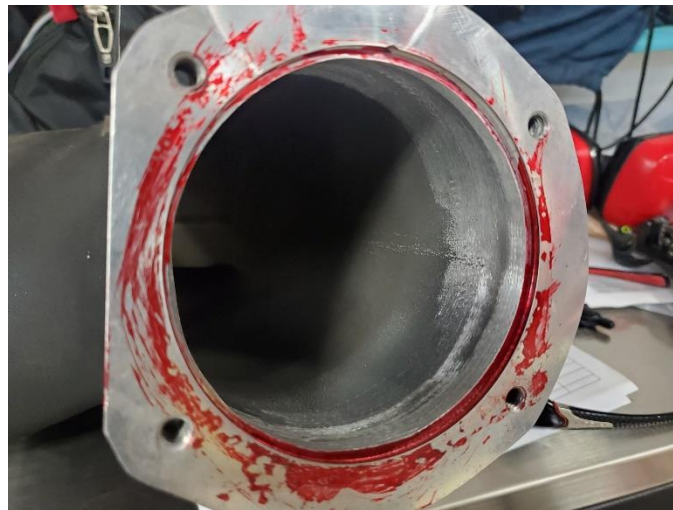
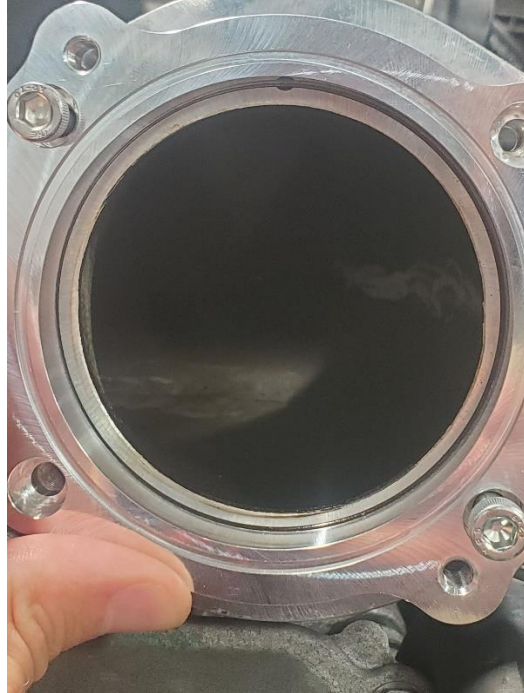
KIT COMPONENTS:

- (1) PROSPEED CNC RCF ADAPTER
- (2) O-RINGS
- (4) M6x1.00x20mm SOCKET HEAD BOLT

INSTALLATION:

1. Disconnect the battery
2. Remove the intake tube/box/throttle body from the supercharger
3. Remove the drive belt off the supercharger, then remove all bolts mounting the supercharger to the cylinder heads, then lift up the front of the supercharger, placing a block of wood under it to hold it up so you can access the bolts to the snout, make sure not to drop any debris into any intake runners, failure to do so can cause engine damage.
4. Remove all bolts and hoses, then remove the supercharger snout.
5. Lightly bolt the provided cnc adapter to the snout opening, using a paint marker or anything else that can mark metal, mark all the area of metal in circle, remove the cnc adapter, then grind the excess metal away, this will basically be right where the existing o-ring groove starts. You only need to d=grind the overhang away as the snout opens up under it, once done clean everything thoroughly.





6. Reinstall everything in the reverse of removal, use Loctite 515 gasket eliminator on the snout to supercharger mating surfaces.
7. Bolt the CNC adapter to the snout using provided o-rings, a small amount of RTV can be added to the o-ring on the supercharger mating side if preferred, bolt down using provided M6 socket head bolts, then bolt RCF throttle body to the adapter using the OEM throttle body bolts that were on the truck, plug in the throttle body, reinstall the intake system.
8. The truck is now ready for tuning.