

PROSPEED TUNDRA FUEL PUMP UPGRADE



Components included:

- Ti Auto fuel pump
- Fuel pump install kit
- PTFE fuel line w/ 2 clamps



NOTES:

- FLEX FUEL TRUCKS COME EQUIPPED WITH A LOWER FLOWING TI AUTO FUEL PUMP THAT IS COMPATIBLE WITH ETHANOL, INSTALLATION IS THE SAME AS NON FLEX TRUCKS
- YOU WILL NEED A HEAT GUN IN ABLE TO INSTALL THE PTFE FEED LINE
- INSTALLTION CAN BE DONE ON THE GROUND WITH A JACK IF NECESSARY, BUT WE RECOMMEND TO DRAIN OR RUN OUT AS MUCH GAS AS POSSIBLE AS THE TANK IS LONG AND THE FUEL WILL ROLL FROM SIDE TO SIDE WHEN LOWERING IT DOWN, WE ADVISE THE USE OF TWO PEOPLE.

REMOVAL OF FUEL TANK:

****INSTRUCTIONS FROM OEM****

1. PRECAUTION

NOTICE:

After turning the ignition switch off, waiting time may be required before disconnecting the cable from the battery terminal. Therefore, make sure to read the disconnecting the cable from the battery terminal notice before proceeding with work See: Vehicle > Technician Safety Information > Repair Instruction - Precaution.

2. DISCHARGE FUEL SYSTEM PRESSURE

3. DISCONNECT CABLE FROM NEGATIVE BATTERY TERMINAL

4. REMOVE FUEL TANK CAP

5. REMOVE NO. 1 FUEL TANK PROTECTOR SUB-ASSEMBLY (for Rough Road Area Specification Vehicles)

6. DISCONNECT FUEL TANK MAIN TUBE SUB-ASSEMBLY (FEED LINE)

7. DISCONNECT FUEL TANK RETURN TUBE (RETURN LINE)

8. DISCONNECT VENT LINE HOSE

9. DISCONNECT WIRE HARNESS

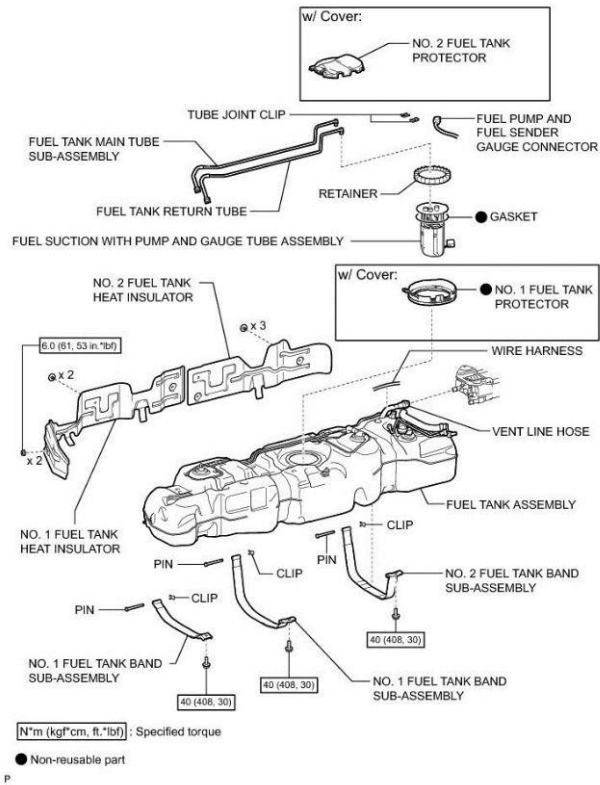
10. DISCONNECT FUEL TANK TO FILLER PIPE HOSE

11. DISCONNECT OUTLET NO. 1 CANISTER HOSE

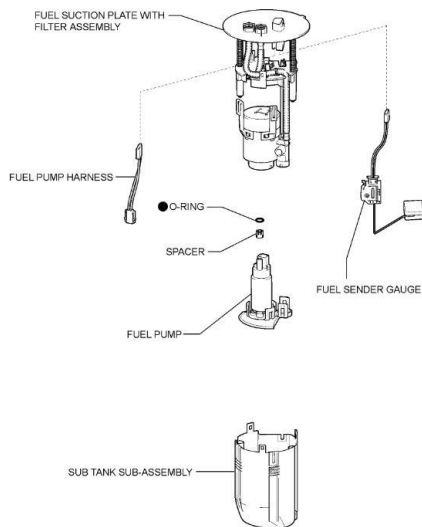
12. REMOVE FUEL TANK ASSEMBLY

13. REMOVE FUEL SUCTION WITH PUMP AND GAUGE TUBE ASSEMBLY

for 144 L (38 US gal) Fuel Tank:

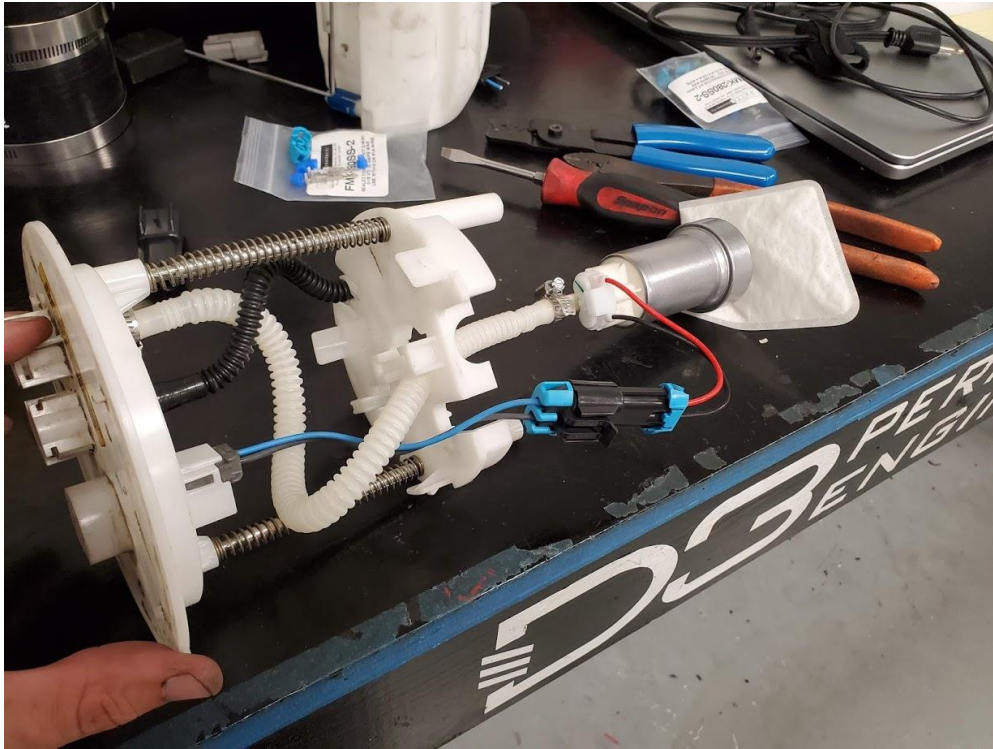


INSTALLATION OF FUEL PUMP KIT INTO OEM BASKET:

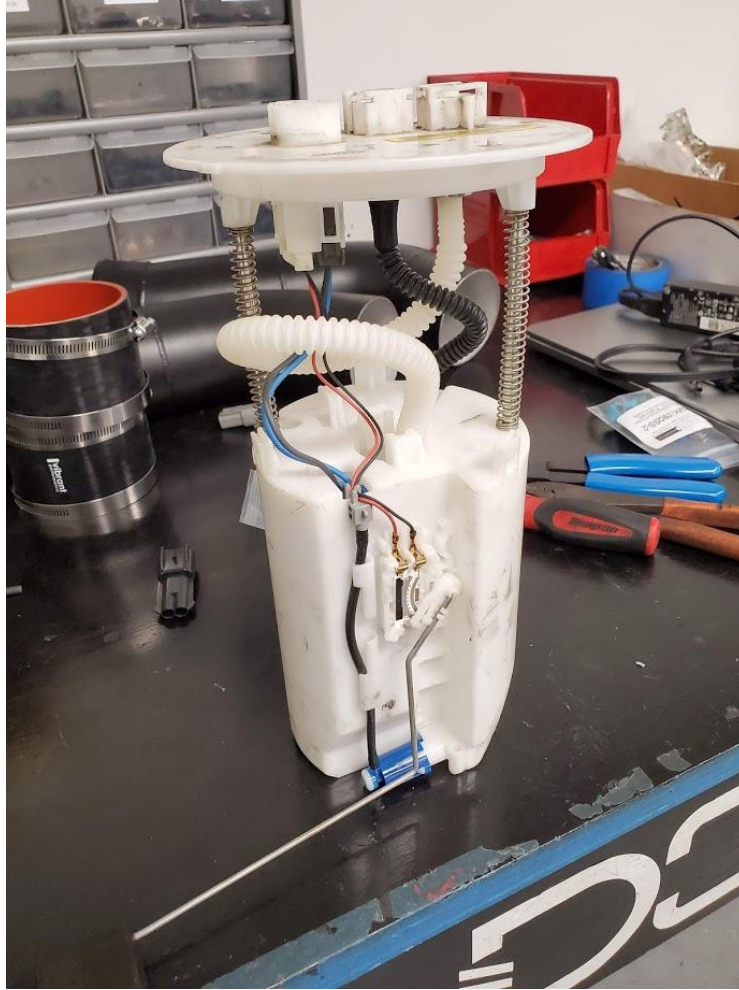


1. UNPLUG CONNECTOR FOR FUEL PUMP AND LEVEL SENDER FROM THE BOTTOM OF THE TOP SECTION OF THE FUEL PUMP HANGER.
2. USING A SMALL FLAT BLADE SREW DRIVER, RELEASE THE THREE LOCKING TABS AROUND THE BASE OF THE FUEL PUMP BASKET TO SEPARATE IT FROM THE UPPER BASKET.
3. USING A RAZOR BLADE, CUT THE FUEL PUMP HOSE FROM THE BOTTOM OF THE TOP OF THE FUEL PUMP HAT.
4. UNCLUP THE OEM FUEL PUMP/FILTER ASSEMBLIE FROM THE LOWER BASKET AND SET TO THE SIDE, CUT THE HARNESS FROM THE OEM PUMP NEAR THE PUMP, SET THIS TO THE SIDE.
5. USING THE PROVIDED WIRING KIT, ATTACH THE NEW PUMP CONNECTOR LEAD HARNESS TO THE OEM ONE USING THE PROVIDED BUTT CONNECTORS.
6. USING SUPPLIED TI AUTO PUMP, ATTACH THE NEW FILTER TO THE BASE, ALIGN THE SUCTION HOLE AND THE LOCATING TAB, THEN USE HEAVY FORCE TO MAKE SURE IT IS FIRMLY PRESSED ALL THE WAY DOWN, THE FILTER ITSELF HAS A LOCK BUILT IN THAT SECURES ONTO THE LOCATING PIN.
7. USING THE PROVIDED PTFE LINE, SLIDE OVER THE TI AUTO PUMPS OUTLET, USING A HEAT GUN, GIVE IT JUST ENOUGH HEAT TO ALLOW THE HOSE TO SLIDE OVER THE OUTLET, YOU WILL NEED TO USE DECENT FORCE, DO NOT OVERHEAT AS IT WILL CAUSE THE HOSE TO OVEREXPAND AND WILL REQUIRE REPLACEMENT, MAKE SURE TO APPLY EVEN FORCE SO THE HOSE PRESSES DOWN SQUARELY.
8. PLACE THE PUMP UNDER THE TOP OF THE FUEL PUMP BASKET AND RUN THE PTFE HOSE THROUGH THE CENTER OF THE HOLE, THEN PLACE THE TWO PROVIDED WORM CLAMPS OVER THE HOSE, THEN SLIDE THE PTFE HOSE OVER THE OEM PUMP FEED LOCATION THAT YOU CUT THE OEM HOSE OFF EARLIER USING THE PREVIOUS METHOD. ONCE THE HOSE IS SECURE ONTO THE NIPPLE, TIGHTEN ONE CLAMP ON THE HAT NIPPLE AND ONE ON THE PUMP OUTLET NIPPLE.

9. PLUG IN THE NEW POWER HARNESS TO THE PUMP THEN RUN IT UP BY THE FEED HOSE THEN PLUG IT IN WITH THE OEM LEVEL SENDER.



10. REATTACH THE BOTTOM OF THE FUEL PUMP BASKET TO THE UPPER SECTION, THE PUMP WILL JUST REST WITHIN THE BASKET





11. REINSTALL FUEL PUMP HANGER BACK INTO FUEL TANK
12. REINSTALL FUEL TANK BACK INTO TRUCK IN THE REVERSE OF REMOVAL