

Towel

21" x 5"

1. cut border or print 22" x 5"
2. cut contrast trim fabric or ric rac 2-22" x 1"
3. starch and press
4. press trim in half
5. stitch trim to edges of fabric 1/8" seam, press lightly
6. stitch fabric print to towel right sides together 8" up from bottom of towel
7. flip down and tuck under 1/2" on ends and edgestitch ends and stitch in ditch across bottom of fabric

Sew fun!
So little!
So quick!
So useful!
So gifty!

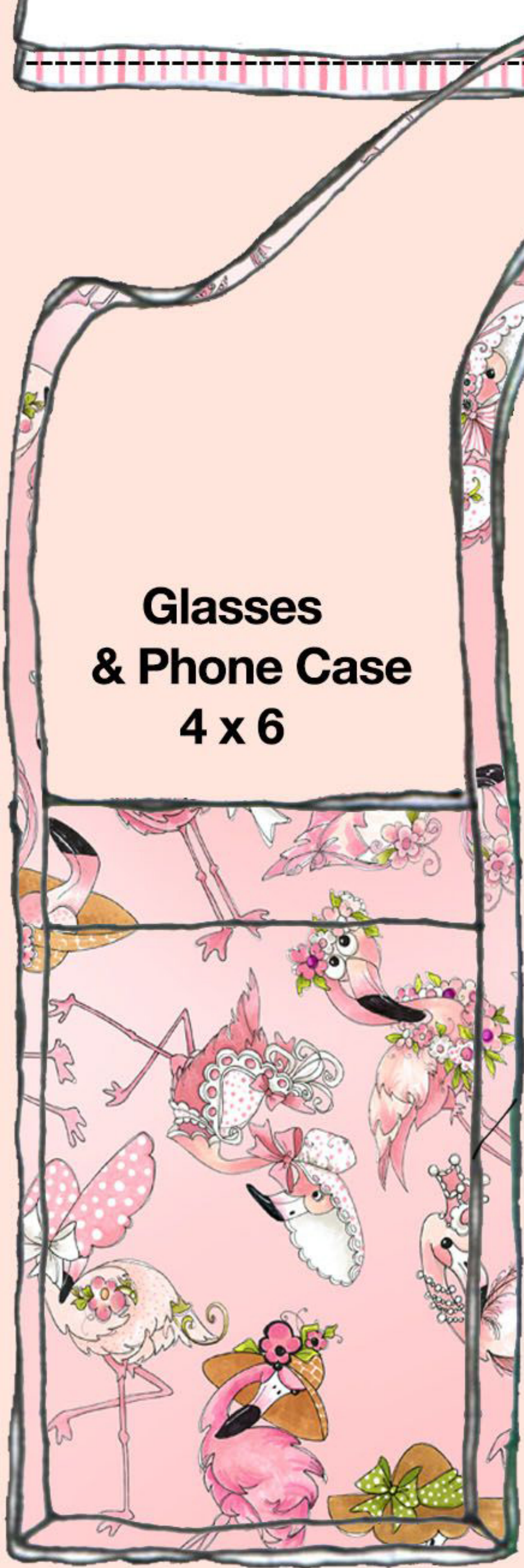
By

Loralee



6 Little Bitty Projects

Glasses & Phone Case 4 x 6



Front & Back
2- 4" x 12"

1. front and back cut 2-4 x 12
2. batting cut 2-4 x 6
3. cut front pocket 1- 4 x 10
4. starch and press front and back
5. fold in half, placing batting in between
6. stack up
7. edgestitch
8. bind sides and bottom

Batting
2- 4" x 6"

Front Pocket
1 - 4" x 10"

Glasses Case 3.5 x 7



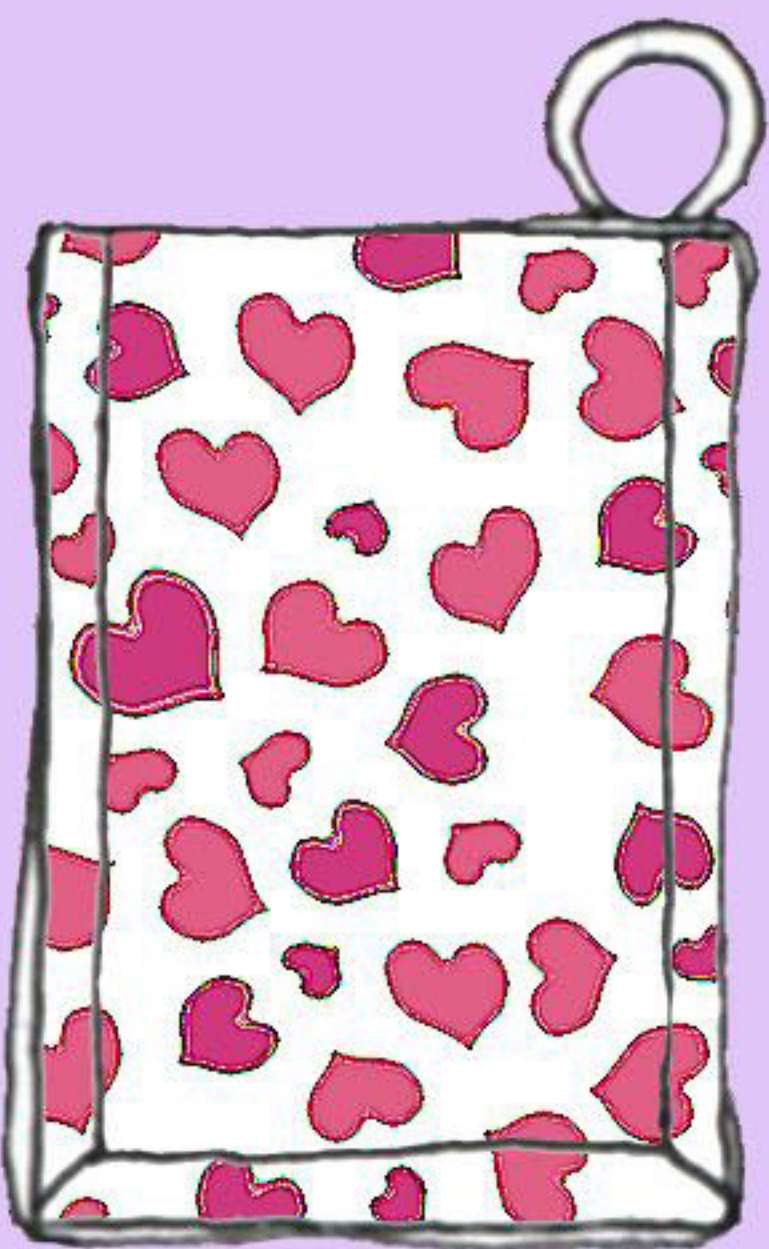
Front and back
2- 3.5 x 14

- 1, front and back cut 2- 3" x 14"
2. batting cut 2- 3.25" x 7"
3. binding cut 1- 2" x 43"
4. starch and press front and back
5. fold in half and place batting between
6. stack up
7. edgestitch
8. bind sides and bottom.

Batting
2- 3.25"x 7"

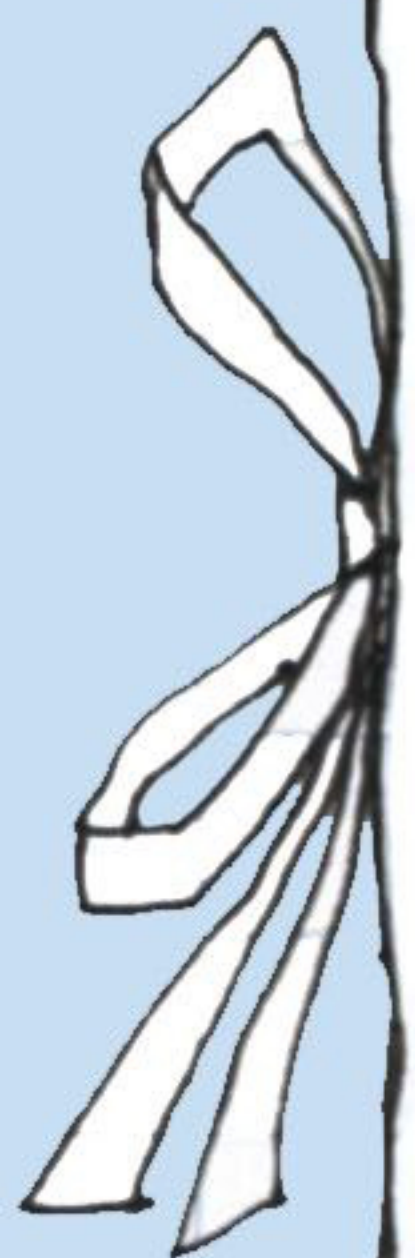
Memory Ring Case 3.5 x 5

1. front & back cut 2- 3.5" x 10"
2. batting cut 2 3.25" x 5"
3. cut binding 1- 1 3/4" x 22"
4. starch & press front & back
5. place batting between folded over front & back
6. stack
7. bind
8. cut 40- 2" x 4" cards, place on ring



Cozy 19 x 8 Great for cosmetics, colors, tools, pedicure stuff, you name it!

1. cut interfacing & lining & batting 19" x 8"
2. pocket cut 1- 19" x 9"
3. cut outer 22" x 12" (outer is always 3" larger than lining)
4. cut tie 2" x 43"
5. starch & press outer and lining and pocket
6. fold pocket in half (to 19" x 4")
7. stack interfacing, lining and folded pocket on bottom. Stitch down pocket sections as desired.
8. place on batting, edgestitch, trim
9. bind from back
10. sew and attach tie



Bottle & Phone Bag 7 x 9

1. front & back cut 4- 7" x 9"
2. batting cut 2- 6 3/4" x 8 3/4"
3. straight pocket cut 2- 6" x 7" or cut bias 2- 8" h left side & 4" h right side
4. cut binding 2- 2" x 43"
5. starch & press front, back & pocket
6. sew pocket right sides together, understitch, press
7. layer outer, batting and lining, bind tops
8. stack bound front, back and pocket, edgestitch
9. bind around sides and bottom
10. edge stitch excess binding to create shoulder strap.