

# WRX SHIFTER TRIM LIT LOGO

## INSTALLATION GUIDE

2015-2021 WRX MT

# LIT LOGOS

## INCLUDED PARTS

- 1 - Lit Logos WRX Badge
- 1 - Lit Logos LED Housing
- 1 - Shifter Trim Stencil (Labeled #1)
- 1 - Shift Panel Stencil (Labeled #2)
- 1 - Lit Logos Control Box
- 1 - Lit Logos decal

## HOW TO INSTALL

1. Disconnect the car battery
2. Mark the top of your shifter trim where it meets the shift panel with a pencil,

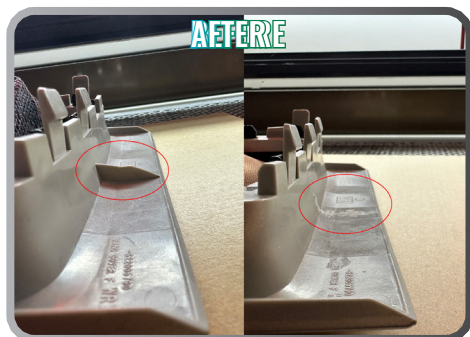
*This is your \*do not cross\* line. When trimming the shift panel in later steps, you know to stay below this line. All trimming done below this line will remain hidden once the shifter trim is re-installed. You can erase this line after installation.*

2. Remove your current shifter trim from the shifter assembly.

*First unscrew your shift knob. Then pull up on the back of the shifter trim until it pops loose. There is a plastic tab on the back holding it in.*

3. Begin trimming the center support on the back of the shifter trim to allow the LED housing to mount to the shifter trim.

*We recommend using a dremel with a grinding bit.*



4. Place the Shifter Trim stencil on top of the Shifter trim centered on the WRX logo using the attached 3M Tape. Using a sharpie, mark the area inside the stencil. This is the area to be cut. \*Keep the stencil on the shifter trim to help prevent any overcutting.\*

*We recommend using a dremel for all cutting to be as precise as possible. Be sure to maintain multiple points of contact to stay in control of the dremel*

*Start by using a dremel drill bit and drill a hole in the center. Once there is a hole all the way through, you can switch to a grinder bit or similar to slowly grind away the area marked by the sharpie.*

*We found that you are less likely to cause any damage to the finish of your shifter trim by working from the backside of the shifter trim.*



5. Place the WRX Badge onto the front of the shifter trim centered over the cutout area. \*Do not stick it down yet\*

*Once you have the badge in place, use a flashlight to shine light from behind the trim. This will let you see if you need to trim any more plastic or if you need to reposition the logo before sticking it down. Once you have it lined up and enough plastic has been trimmed to allow light to cleanly pass through the trim, you can adhere the WRX Badge to the shifter trim. Hold pressure on the outside edges of the badge, not the center as you can crack it.*

*Be sure to clean the area well before adhering the WRX Badge as the 3M tape will adhere best to a clean surface.*

**CONTINUED BELOW...**

# WRX SHIFTER TRIM LIT LOGO

## INSTALLATION GUIDE

2015-2021 WRX MT

# LIT LOGOS

6. Apply the backing plate to the backside of the WRX badge.

*This helps prevent the letters from pushing through the logo in the event that something should fall onto the shifter trim.*



7. Take the LED Housing and adhere it to the back of the shifter trim with the wire facing the driver's side of the vehicle.

*Be sure to clean the area well before adhering the LED Housing as the 3M tape will adhere best to a clean surface.*



8. Apply the Shift Panel Stencil to the area beneath where the shifter trim rests and mark the area to be trimmed.

*See below for the correct placement. Press down on both the left and right side of the stencil and slide it down as far as it will allow, this will put it in the correct positioning. Once in place, use a silver sharpie or similar marker to mark the area. Trim the marked area with a dremel and grinder bit.*

*This will line up perfectly for 9/10 installs, but if the LED housing isn't centered on the trim, the shifter panel may need additional clearancing to fit the LED Housing or wire.*

*We recommend gently lining everything up and seeing what exactly needs trimming before trimming any further past the provided stencil. Do not force anything.*



9. Place the control box on the inside of the shifter area out of the way using the supplied 3M adhesive and feed the power and ground wires through the driver's side foot-well panel, routing them to the interior fuse box.

*The logo can be powered from any power source, but we recommend using a fuse tap for an easy install. The logo needs a 5a fuse to protect it from any power surges.*

*If you want the logo to have power all the time, ie. for car shows/meets, you can use fuse #3 which is a 15A Door Lock fuse. You can always switch off the LED's from within the app and the logo will draw next to no power at all.*

*If you want the logo to be on with the car and off with the car, we recommend using fuse #31 which is a 7.5A Accessory fuse.*

**CONTINUED BELOW...**

# WRX SHIFTER TRIM LIT LOGO

## INSTALLATION GUIDE

2015-2021 WRX MT



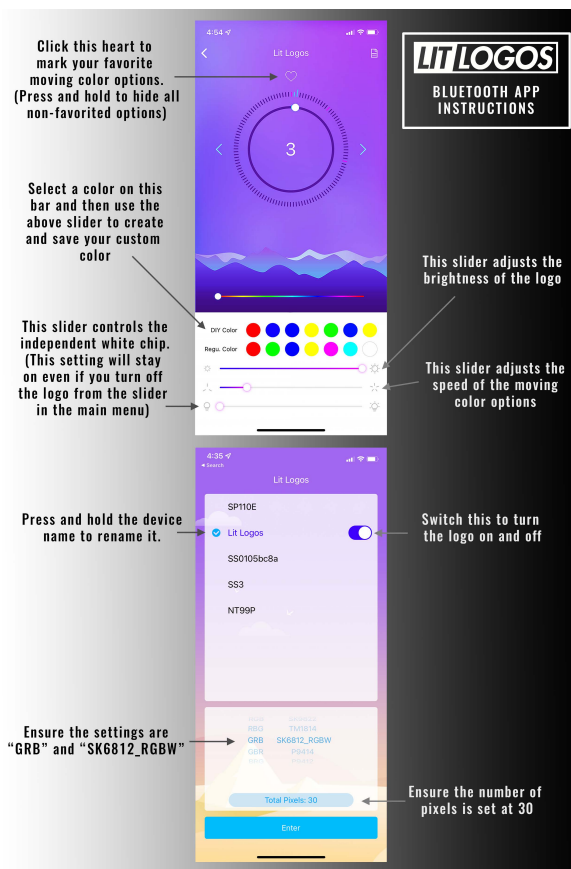
10. Secure the ground wire to an unpainted ground source.

*There are several locations within the footwell area you can ground to. A good ground source will be on unpainted metal. If the metal is painted, you can sand it down to improve the contact.*

12. Re-connect the battery and you're good to go!

## LED HUE BLUETOOTH APP

Download the LEDHue app from the App Store/Google Play store. Below are some tips for using the LEDHue app to control your Lit Logo:



## TROUBLESHOOTING STEPS

We hope you never have any issues with your logo, but if you do, here are the best steps to take to get it working again as quickly as possible:

- Turn off Bluetooth on your phone, uninstall and reinstall the app, and try to connect to the logo again
- Ensure the ground source is clean and connected directly to unpainted metal. We recommend connecting the ground wire to the same location the battery is grounded to
- Try a different power source. Sometimes a fuse tap won't reach far enough into the fuse or the wire won't provide enough power, so try connecting the logo directly to the battery with an inline fuse
- Check the app and ensure the logo is set to "GRB SK6812\_RGBW" and the pixels should be set to 30
- Make sure the logo is switched to the "on" position in the app
- Make sure that the bottom slider on the app control is turned all the way down
- Make sure that the top slider on the app control is turned all the way up
- Try using a different phone to connect to the logo
- Check that the arrows on the quick disconnect between the logo and the control box are pointing towards each other
- Disconnect the logo from power and leave off for 12 hours