

# STI SHIFTER TRIM

## LIT LOGOS INSTALLATION GUIDE



### INCLUDED PARTS

- 1- Lit Logos STI Shifter Trim Badge
- 1- Lit Logos Control Box
- 1- Mini Fuse Tap with 5A Fuse
- 1- Ring Terminal
- 1- Lit Logos decal

### HOW TO INSTALL

1. Disconnect the car battery
  
2. Remove the two 10mm bolts inside the center console/arm rest.
  
3. Pull straight up on the base of the E-Brake boot and remove the screw near the shifter trim.
  
4. Pull the center console up and back slightly to give yourself more room to work with.
  
5. Remove the shift knob by spinning it counter clockwise. Shift into 4th gear to make the next step easier.
  
6. Remove the entire shifter trim by pulling up and back on the trim. Once you hear it pop out, you will need to disconnect the wiring harness located beneath the storage cubby on the shifter trim. Once that is disconnected, the shifter trim can be removed from the car.

7. Remove the OEM STI badge by disconnecting the plug and removing the two screws. Keep these screws for later use.

*If you are using the OEM Connector installation, this is the same connector you will plug the Lit Logos Control Box in to at a later step.*

8. Install the Lit Logos STI Shifter Trim badge by lining up the holes on the mounting brackets and using the two screws from the previous step.

9. Connect the Control Box to the STI badge using the quick connect fittings, ensuring that the arrows on the connectors are lined up.

*If the arrows do not line up, the badge will not work. Press the connectors fully together and tighten the nut fully to ensure a tight connection.*

10. Route the power and ground wires from the control box to the driver side fuse box located under the driver air vent.

*We found the easiest way to do this is to tuck the wires underneath the carpet beneath the pedals.*

11. Connect the fuse tap to the red power wire via the crimp connector.

**CONTINUED BELOW...**

# STI SHIFTER TRIM

## LIT LOGOS INSTALLATION GUIDE

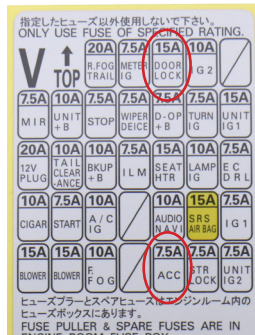


12. Remove the 7.5A fuse labeled "ACC" in your interior fusebox and place that fuse in the bottom slot of the fuse tap. Place the fuse tap into the same slot the 7.5A ACC fuse was in.

*This fuse will allow the logo to turn on with the car, and off with the car.*

*If you want the logo to have power 24/7, you can connect it to the 15A Door Lock fuse. You can still turn the logo off from within the app to save your battery.*

*Fuse locations may vary, but this is the most common diagram. If your interior fuse box diagram looks different, please contact us!*



13. Connect the ring terminal to the **black** ground wire and connect that to any ground bolt. We recommend using the mounting bolt for the clutch pedal pictured below.



14. Using the supplied 3M tape and zip ties, secure the control box and all wiring out of the way of the shifter and all pedals.

15. Reinstall the Shifter Trim by following steps 2-6 in reverse.

16. Re-connect the battery and download the bluetooth app! More info regarding the app can be found on page 3.

CONTINUED BELOW...

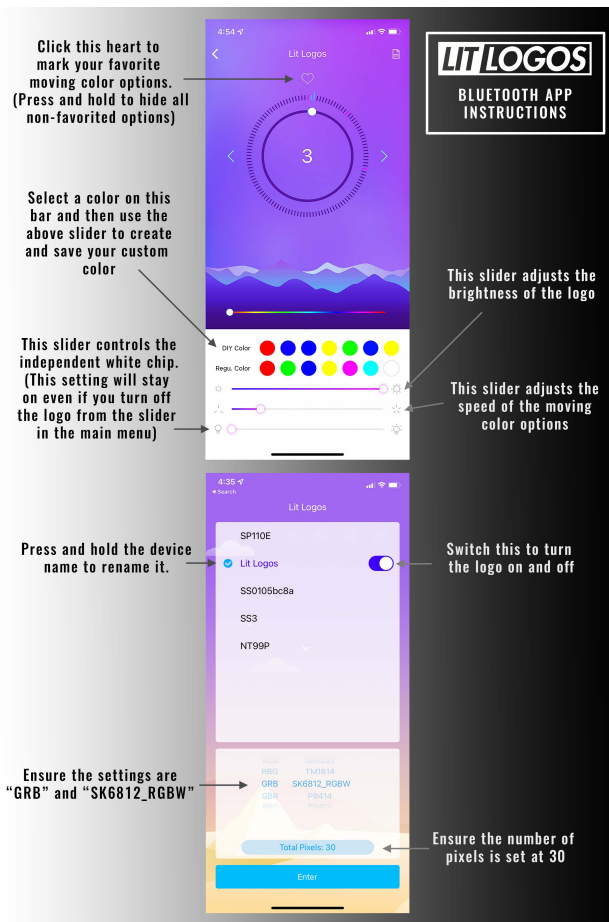
# STI SHIFTER TRIM

## LIT LOGOS INSTALLATION GUIDE



### LED HUE BLUETOOTH APP

Download the LEDHue app from the App Store/Google Play store. Below are some tips for using the LEDHue app to control your Lit Logo:



### TROUBLESHOOTING STEPS

We hope you never have any issues with your logo, but if you do, here are the best steps to take to get it working again as quickly as possible:

- Turn off Bluetooth on your phone, uninstall and reinstall the app, and try to connect to the logo again
- Ensure the ground source is clean and connected directly to unpainted metal.
- Check the app and ensure the logo is set to "GRB SK6812\_RGBW" and the pixels should be set to 15
- Make sure the logo is switched to the "on" position in the app
- Make sure that the bottom slider on the app control is turned all the way down
- Make sure that the top slider on the app control is turned all the way up
- Try using a different phone to connect to the logo
- Check that the arrows on the quick disconnect between the logo and the control box are pointing towards each other
- Disconnect the logo from power and leave off for 12 hours