

QUATTRO LIT LOGOS

MESH GRILL INSTALLATION GUIDE



INCLUDED PARTS

- 1 - Lit Logos Control Box
- 1 - Lit Logos Quattro logo
- 4 - Zip Ties
- 1 - Lit Logos decal

HOW TO INSTALL

1. Disconnect the car battery
2. Remove the bumper to gain access to the backside of the grill
3. Line up the logo on the front of the grill where you would like to install it. Run the wire through one of the holes in the grill.

If you have a fine mesh grill, you may need to snip one or two of the mesh links to allow the wiring to fit through.

4. Place two zip ties in the holes located on the left and right side of the logo, one in each hole. **Do not connect them yet.**
6. Secure the logo to the grill with supplied zip ties. **Do not overtighten** as the zip tie holes can break if the zip ties are torqued down.
7. Find where you want to connect the logo to power. Any 12V power source will work so you can select a fuse, headlight wire, or even wire it directly to the battery.

A 5a fuse must be used with ANY power source you use. Most commonly with an inline fuse connected directly to the car battery.

8. Route the power and ground wire from the control box to the location you chose to power the logo, avoiding any high heat or moving parts.

9. Tuck the Control Box out of the way, but still within reach of the front bumper where you installed the logo.

Be sure to place this somewhere that wont be hit by road debris, direct water, or high heat. This is the brains of the Lit Logo. It is water and heat resistant, but high pressure water or extreme temperatures can damage the electronics.

10. Connect the Lit Logo to the Contol Box using the waterproof quick disconnect. **Ensure that the arrows line up on the connector and the red gasket is in place. Thread the locking nut into place all the way to ensure a waterproof connection.**

11. Reinstall the bumper and re-connect the battery.

CONTINUED BELOW...

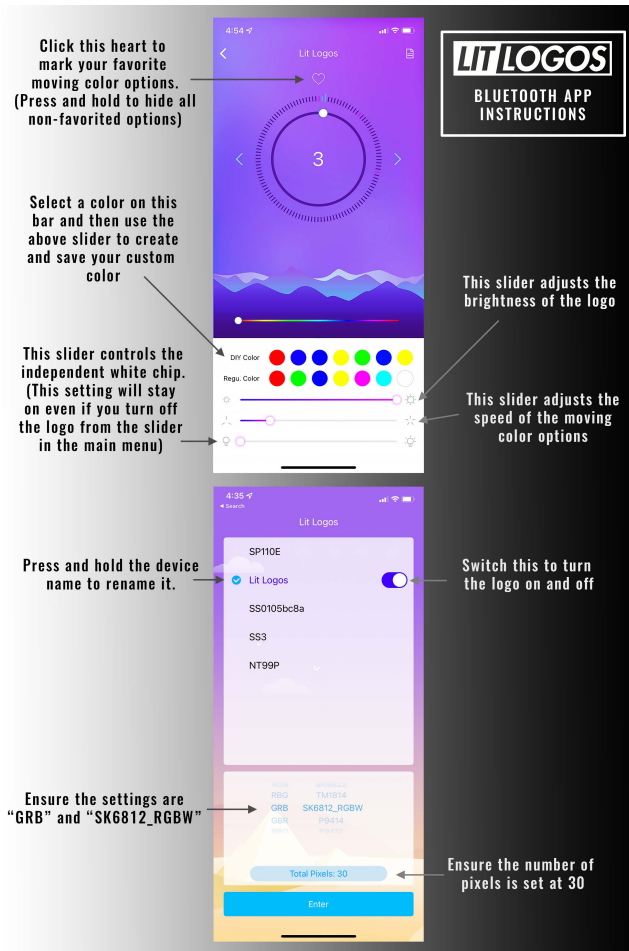
QUATTRO LIT LOGOS

MESH GRILL INSTALLATION GUIDE



LED HUE BLUETOOTH APP

Download the LEDHue app from the App Store/Google Play store. Below are some tips for using the LEDHue app to control your Lit Logo:



TROUBLESHOOTING STEPS

We hope you never have any issues with your logo, but if you do, here are the best steps to take to get it working again as quickly as possible:

- Turn off Bluetooth on your phone, uninstall and reinstall the app, and try to connect to the logo again
- Ensure the ground source is clean and connected directly to unpainted metal. We recommend connecting the ground wire to the same location the battery is grounded to
- Try a different power source. Sometimes a fuse tap wont reach far enough into the fuse or the wire wont provide enough power, so try connecting the logo directly to the battery with an inline fuse
- Check the app and ensure the logo is set to "GRB SK6812_RGBW" and the pixels should be set to 15
- Make sure the logo is switched to the "on" position in the app
- Make sure that the bottom slider on the app control is turned all the way down
- Make sure that the top slider on the app control is turned all the way up
- Try using a different phone to connect to the logo
- Check that the arrows on the quick disconnect between the logo and the control box are pointing towards each other
- Disconnect the logo from power and leave off for 12 hours