

GTI/GLI LIT LOGO

MESH GRILL INSTALLATION GUIDE



INCLUDED PARTS

- 1 - Lit Logos Control Box
- 1 - Lit Logos GTI/GLI Badge
- 4 - Zip Ties
- 1 - Lit Logos decal
- 1 - Inline Fuse with 3A Fuse
- 2- Ring Terminals
- 1- Straight Connector

HOW TO INSTALL

1. Disconnect the car battery

2. Decide where on your mesh grill you want to place the logo

Most aftermarket grills wont have a badge at all, so its up to you where you want it. are held on with some screws or clips from the backside of your grill. Removing your bumper/grill will make the rest of the install easier.

3. Slide the zip ties through the bracket on the back of the housing. These zip ties will secure the logo to the grill.

We supply 4 zip ties in case you need to reposition the logo after securing the zip ties.

4. Feed the male connector of the logo through the grill and position the logo in the same location as the OEM badge was.

If the wire fits through the mesh but the plastic nut does not, you can use some heat to soften the plastic nut and remove it to feed the wire through the grill. The plastic nut needs to be reinstalled to maintain a waterproof connection. You may need to snip one or two of the mesh links to allow the wire to pass through if the hole is smaller than 11mm. Once installed, this will be completely hidden.

Ensure the zip ties are going to be straight and level when installing or the logo wont be straight when the zip ties are tightened. You may need to reposition the logo slightly to ensure it stays straight.

5. Tuck the black Control Box out of the way, but still within reach of the front bumper where you installed the logo.

Be sure to place this somewhere that wont be hit by road debris, direct water, or high heat. This is the brains of the Lit Logo. It is water and heat resistant, but high pressure water or extreme temperatures can damage the electronics.

6. Connect the control box to the logo using the waterproof quick disconnect and thread the plastic nut all the way on.

Ensure the arrows on both sides of the connector line up before connecting. If the arrows arent lined up, the logo will not work and you can risk damaging the pins.

This connector will allow you to still remove your front bumper without removing the logo.

7. Find where you want to connect the logo to power. Any 12V power source will work so you can select a fuse, headlight wire, or even wire it directly to the battery.

A 3a fuse must be used with ANY power source you use. Most commonly with an inline fuse connected directly to the car battery but can also use a fuse tap into the fuse box.

8. Route the power and ground wire from the control box to the location you chose to power the logo, avoiding any high heat or moving parts.

9. Re-connect the car battery and download the app below to control the logo!

CONTINUED BELOW...

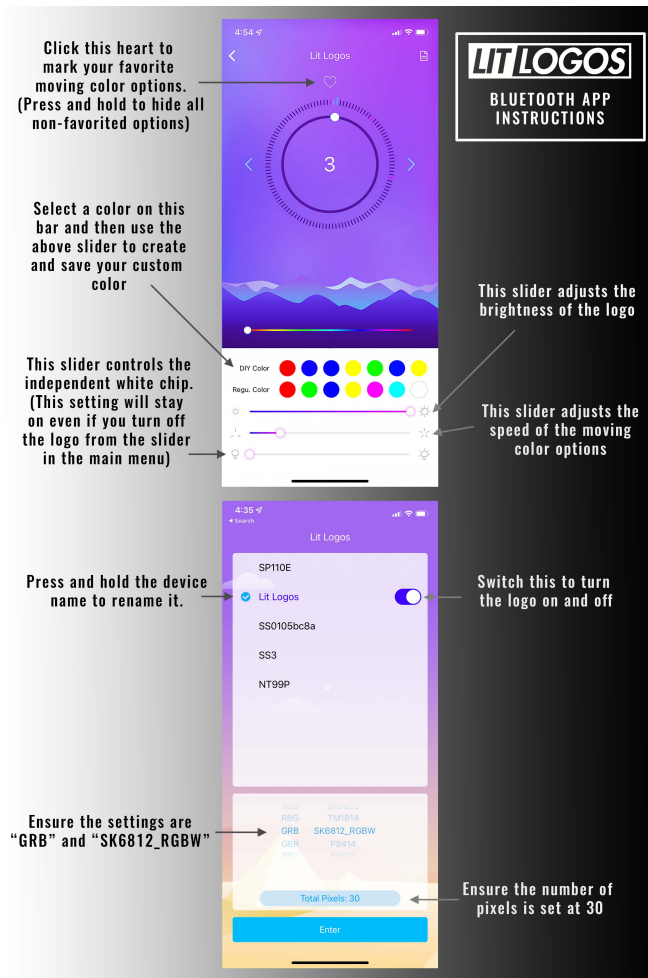
GTI/GLI LIT LOGO

MESH GRILL INSTALLATION GUIDE



LED HUE BLUETOOTH APP

Download the LEDHue app from the App Store/Google Play store. Below are some tips for using the LEDHue app to control your Lit Logo:



TROUBLESHOOTING STEPS

We hope you never have any issues with your logo, but if you do, here are the best steps to take to get it working again as quickly as possible:

- Turn off Bluetooth on your phone, uninstall and reinstall the app, and try to connect to the logo again
- Ensure the ground source is clean and connected directly to unpainted metal. We recommend connecting the ground wire to the same location the battery is grounded to
- Try a different power source. Sometimes a fuse tap wont reach far enough into the fuse or the wire wont provide enough power, so try connecting the logo directly to the battery with an inline fuse
- Check the app and ensure the logo is set to "GRB SK6812_RGBW" and the pixels should be set to 30
- Make sure the logo is switched to the "on" position in the app
- Make sure that the bottom slider on the app control is turned all the way down
- Make sure that the top slider on the app control is turned all the way up
- Try using a different phone to connect to the logo
- Check that the arrows on the quick disconnect between the logo and the control box are pointing towards each other
- Disconnect the logo from power and leave off for 12 hours