

# GR86 LIT LOGOS

## INSTALLATION GUIDE



### INCLUDED PARTS

- 1 - Lit Logos Control Box
- 1 - Lit Logos GR Logo
- 4 - Zip Ties
- 1 - Lit Logos decal

### HOW TO INSTALL

1. Disconnect the car battery
2. Remove the bumper to gain access to the backside of the grill
3. Remove the OEM GR badge from the front grill. It is held on via two push clips on the backside of the grill. Using needle nose pliers or a flathead screwdriver, remove the clips along with the badge.
4. Place the supplied acrylic stencil into the recessed grill bezel. Using a silver sharpie or other marker, color in the inner section of the stencil to mark what needs to be cut out.
5. Using a dremel, cut out only the section marked with sharpie to allow the logo housing to fit into the grill.

*The stencil is designed to be the exact size of the housing, however you may need to remove a little extra material to ensure the logo makes it through the grill. Its better for the logo to have a snug fit rather than a loose fit. Measure twice, cut once.*

6. Once enough room has been made for the logo, insert the logo with the wire first into the grill bezel. The logo should sit centered. Additional clearancing may be needed on the grill to ensure the logo sits centered.

7. Find where you want to connect the logo to power. Any 12V power source will work so you can select a fuse, headlight wire, or even wire it directly to the battery. A 5A fuse is required for install regardless of power source.

8. Route the power and ground wire from the control box to the location you chose to power the logo, avoiding any high heat areas or moving parts.

9. Tuck the Control Box out of the way, but still within reach of the front bumper where you installed the logo.

*Be sure to place this somewhere that wont be hit by road debris, direct water, or high heat. This is the brains of the Lit Logo. It is water and heat resistant, but high pressure water or extreme temperatures can damage the electronics.*

10. Connect the Lit Logo to the Contol Box using the waterproof quick disconnect. **Ensure that the arrows line up on the connector and the red gasket is in place. Thread the locking nut into place all the way to ensure a waterproof connection.**

*You will need to remove, or at least trim some of the styrofoam crash material from the crash bar. Without doing this, the styrofoam pushes on the wire and can cause the LED to become loose within the housing.*

11. Reinstall the bumper and re-connect the battery.

CONTINUED BELOW...

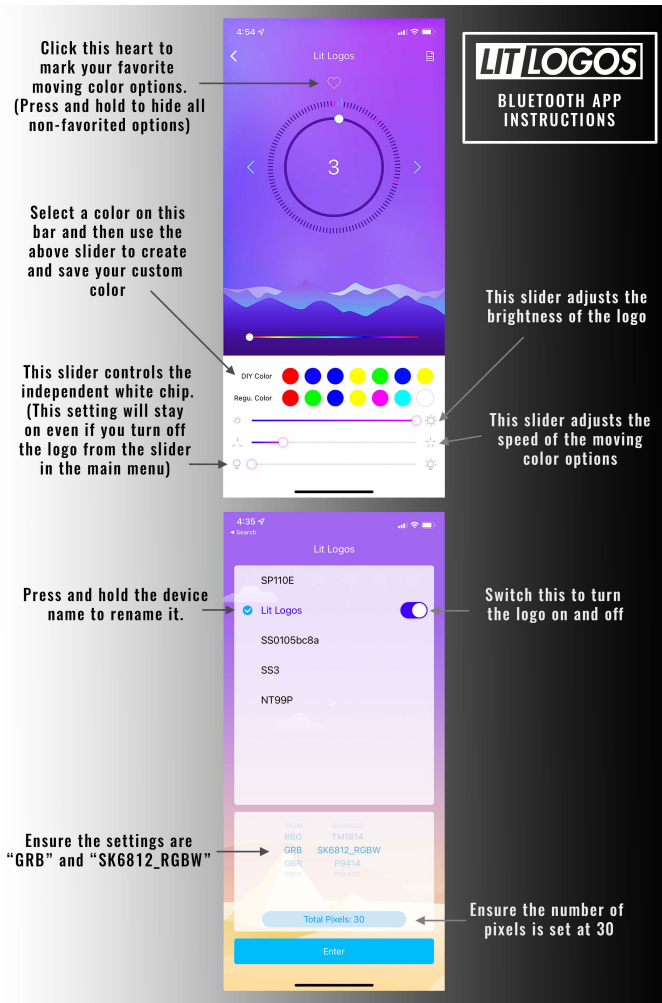
# GR86 LIT LOGOS

## INSTALLATION GUIDE



### LED HUE BLUETOOTH APP

Download the LEDHue app from the App Store/Google Play store. Below are some tips for using the LEDHue app to control your Lit Logo:



### TROUBLESHOOTING STEPS

We hope you never have any issues with your logo, but if you do, here are the best steps to take to get it working again as quickly as possible:

- Turn off Bluetooth on your phone, uninstall and reinstall the app, and try to connect to the logo again
- Ensure the ground source is clean and connected directly to unpainted metal. We recommend connecting the ground wire to the same location the battery is grounded to
- Try a different power source. Sometimes a fuse tap wont reach far enough into the fuse or the wire wont provide enough power, so try connecting the logo directly to the battery with an inline fuse
- Check the app and ensure the logo is set to "GRB SK6812\_RGBW" and the pixels should be set to 30
- Make sure the logo is switched to the "on" position in the app
- Make sure that the bottom slider on the app control is turned all the way down
- Make sure that the top slider on the app control is turned all the way up
- Try using a different phone to connect to the logo
- Check that the arrows on the quick disconnect between the logo and the control box are pointing towards each other
- Disconnect the logo from power and leave off for 12 hours