

Part No. PP-6A24-U

Description: Primewired, Patch Panel Cat6A 110 Type 24 Port Shielded 1U



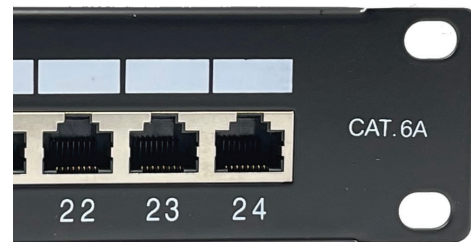
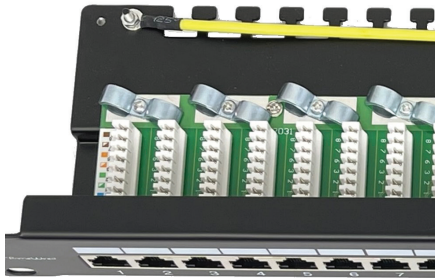
Shielded 24-port patch panel manages and organizes Cat6a input/output cable connections in your highdensity Gigabit Ethernet network.

Features

Shielded 24-Port Patch Panel Manages and Organizes High-Density Cat6a Network

CablingOrganize your high-density Cat6a application without taking up too much valuable rack space. This shielded patch panel offers 24 fully shielded RJ45 ports with color-coded dual IDC slots that are terminated using either a proper Krone or 110 punchdown tool. Both the front and rear connectors are clearly numbered and labeled (for custom naming) to help you identify individual cable runs. The patch panel supports T568A and T568B wiring standards and is fully rated for 10 Gbps Ethernet data transfer speeds in your network application.

Condenses 24 Ports into Just 0.5U of Space in Your 19 in. Enclosure or Open Frame Rack.



Highlights

- 24 RJ45 ports numbered, labeled and color-coded for easy cable identification
- Rated for 10 Gbps speeds for managing Cat6a cable in highdensity Ethernet applications
- Dual IDC terminations allow use of either Krone or 110 punchdown impact tool
- Built-in strain relief bar takes stress off connectors and cuts cable clutter
- Mounts easily into 0.5U of space in your EIA-standard 19 in. rack for immediate use

Applications

Connect computers, routers, switches, wireless access points, security cameras, sensors and other high-speed devices in a 10G network configuration



1 519-745-1926
1 866-254-1194



online_sales@primespec.com



315 Breithaupt St
Kitchener, Ontario, N2H 5H6