

CAPRONI COLLECTION

 SCULPTURE REPRODUCTIONS 

Visit us on the web at capronicollection.com

As this digital catalog is not copyrighted, please reference the Caproni Collection as the source if you copy or use this historical material.

Digitized by Caproni Collection

THE GIUST GALLERY





#168 APOLLO BELVEDERE
From Statue in the Vatican
Height 32"



#66 **IDOLINO** (*reduction & fragment*)
Circa 480 B.C.
Archeologico Museum, Florence 33"



#170 JUNO
From Samos in the Louvre
Height 6' 6"



#64 **FEMALE TORSO**
Circa 380 B.C. 10 1/2"



#68 **BORGHESE WARRIOR** (*reduction & fragment*)
By Agasias. 1st century B.C.
Hellenistic. Louvre Museum 17"



#1 **CLEOPATRA**
Egyptian Queen 8" diam.



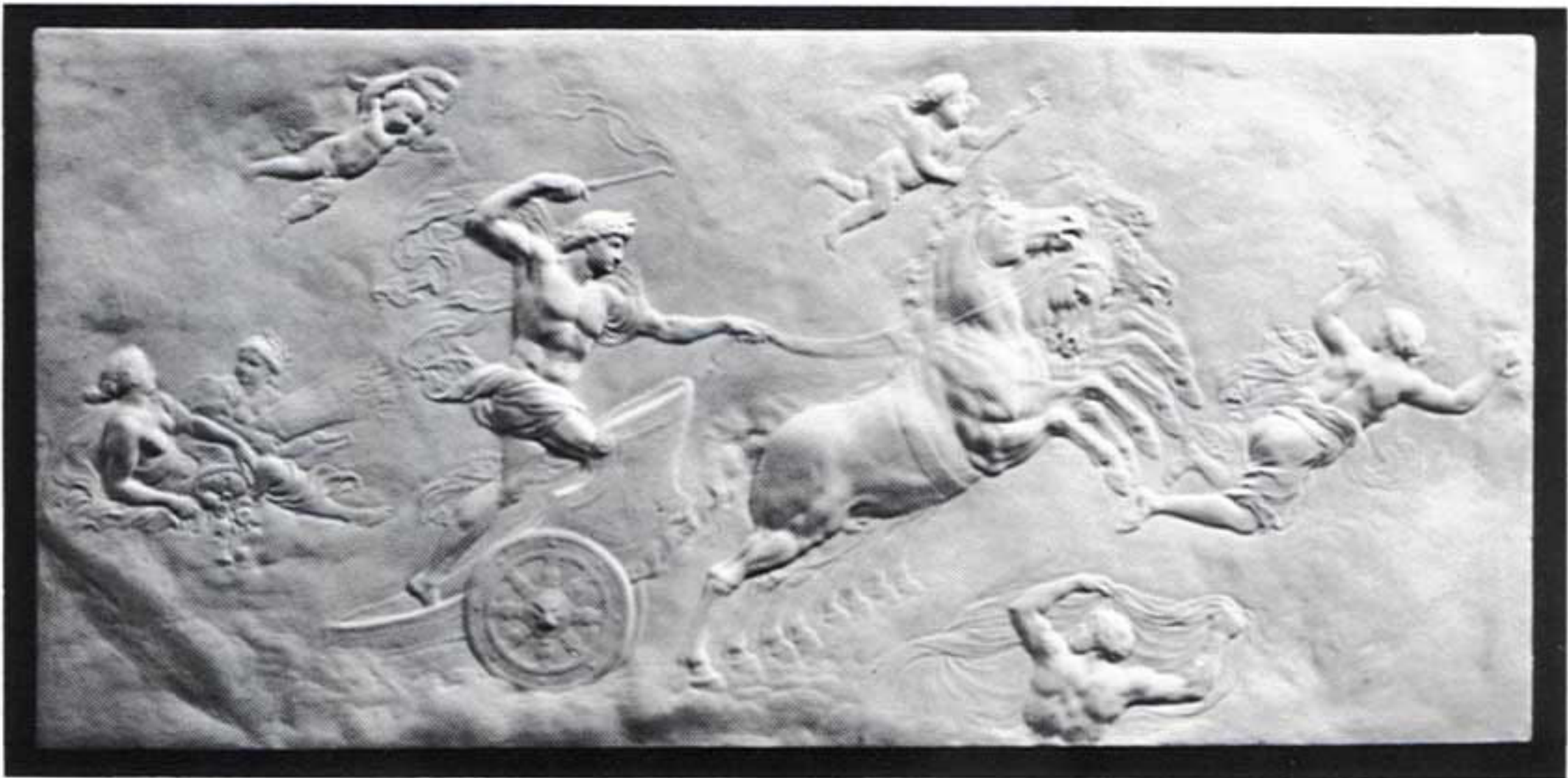
#95 **BORGHESE WARRIOR** (*reduction*)
By Agasias. 1st century B.C.
Hellenistic. Louvre Museum 8 1/2"



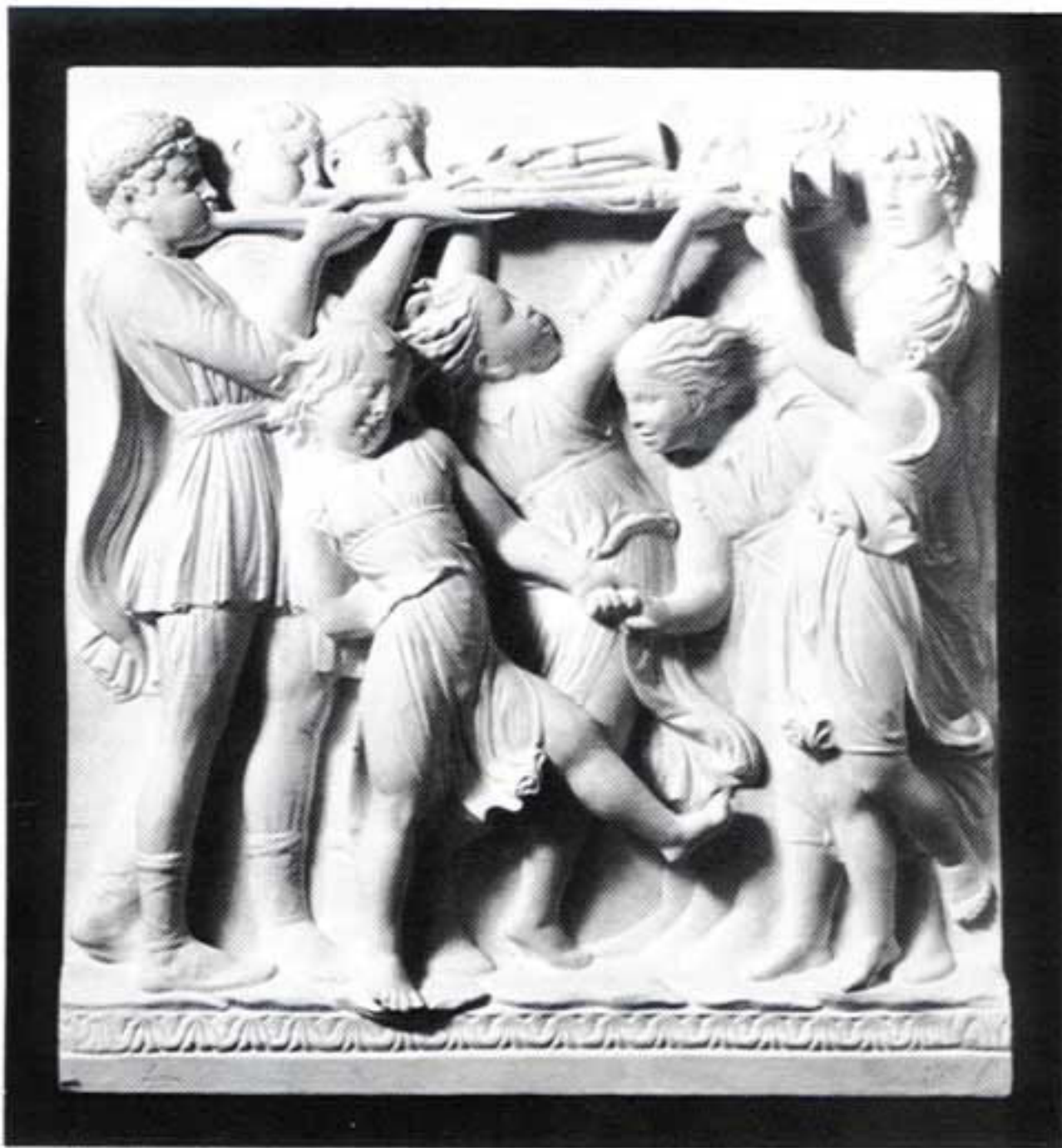
#166 **DIANA OF VERSAILLES**
From Statue in Louvre
Height 29 1/4"



#185 **BOYS SINGING FROM BOOK**
By Luca Della Robbia
From the Cantoria Frieze,
Florence. 26" x 42"



#176 **APOLLO IN A CHARIOT**
37½" x 18"



#186 **BOYS PLAYING ON TRUMPETS**
By Luca Della Robbia
From the Cantoria Frieze,
Florence. 38"x 42"



#187 **BOYS PLAYING ON DRUMS**
By Luca Della Robbia
From the Cantoria Frieze,
Florence. 38"x 42"



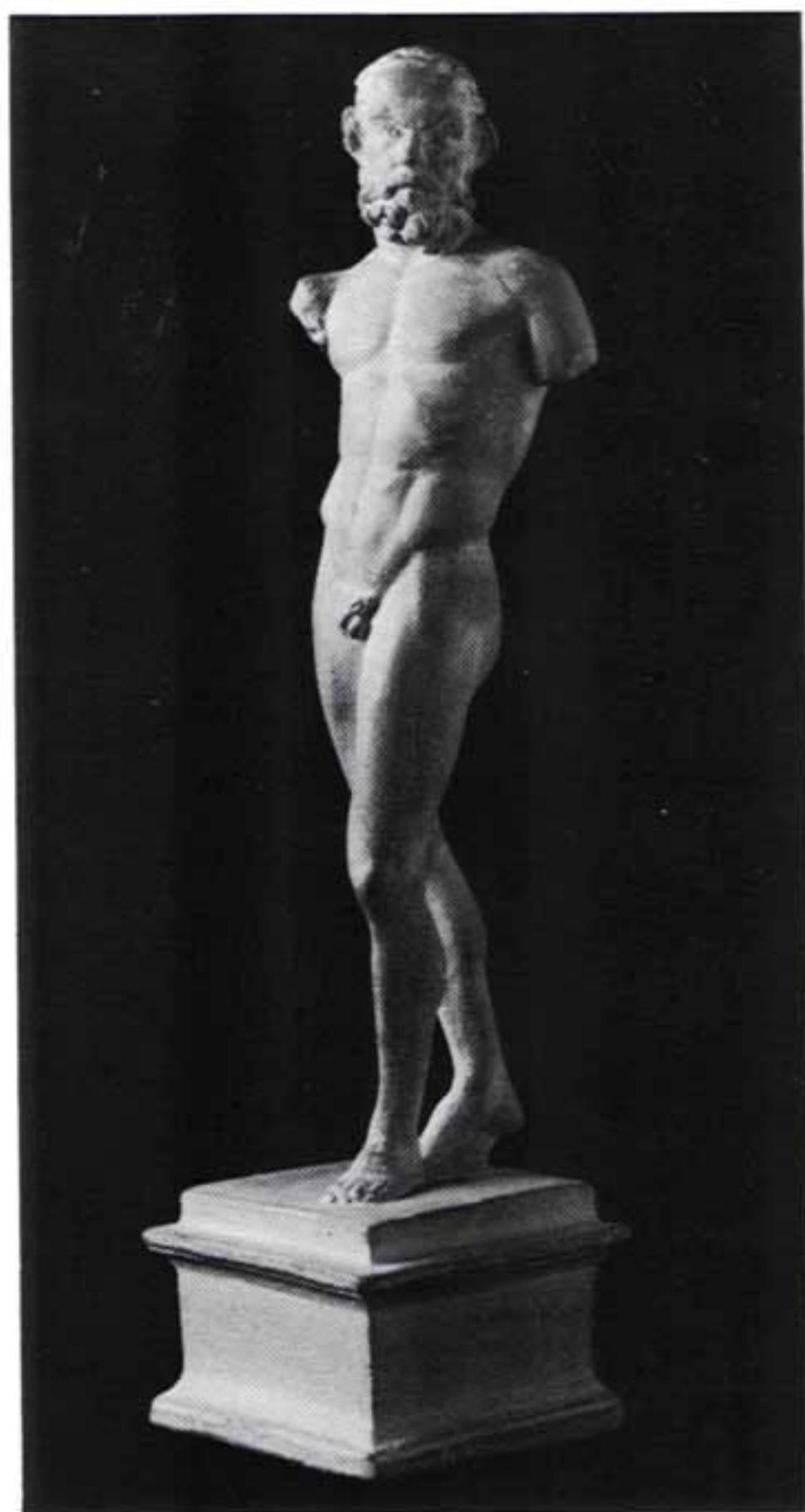
#117 **VENUS OF MELOS**
In the Louvre
Height 7' 1"



#107 **SOCRATES**
Greek Philosopher.
470-399 B.C. British Museum 23"



#74 **VICTORY OF SAMOTHRACE** (*reduction*)
*Attributed to Pythokritos.
Made in commemoration of a
naval victory in 306 B.C.
Louvre Museum 19"*



#72 **DANCING SATYR**
*Found in the crater of Salpion.
Roman period in Hellenistic style.
National Museum, Naples 13½"*



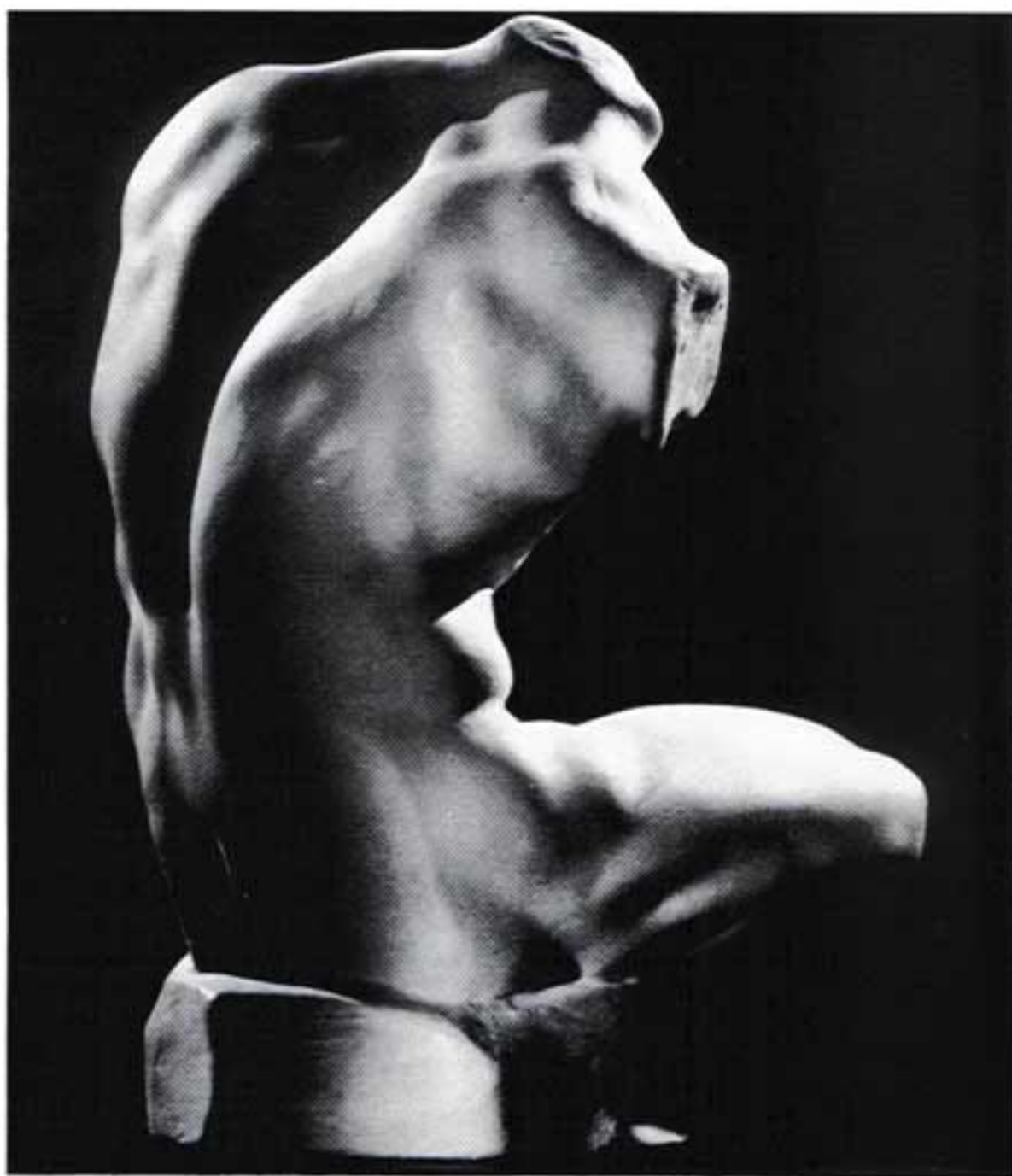
#89 **HERMES**
*By Praxiteles. 4th century B.C.
Olympia Museum 20"*



#73 **HERCULES** (*reduction*)
From National Library, Paris 11"



#97 **MENELAOS** (*reduction*)
Attributed to Antigenes of
Carystus. Third century B.C.
Vatican Museum 11"



#115 **TORSO BELVEDERE** (*reduction*)
by Apollonius, Circa 69 B.C.
Vatican Museum 11 1/2"

#137 **TORSO BELVEDERE**
(*reduction*) 21"



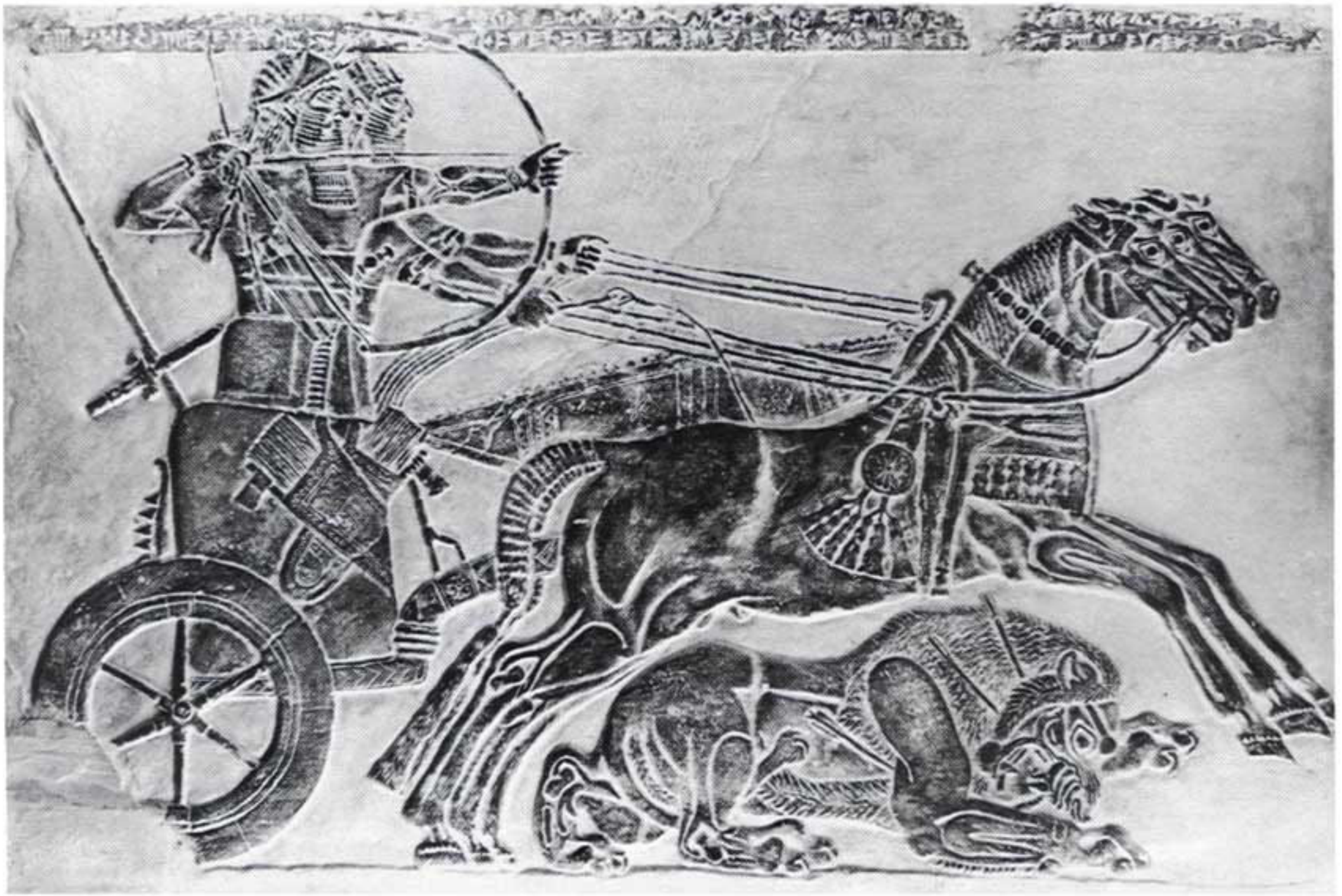
#164 **HERMES** *By Praxiteles*
From the statue at Olympia *Height 32"*



#200 MELEAGER
From the Vatican Museum
19 1/2"



#6 LION
Fragment from #3
27 1/2" x 14"



#3 **LION HUNT IN CHARIOT**
*with cuneiform inscription. Assyrian.
Circa 885-860 B.C. Originally in
the palace of Assur-Nazir-Pal,
Nimrud (Calah). British Museum 38" x 56"*



#5 **KING ASSUR-BANI-PAL**
*Assyrian. Circa 668 B.C.
Originally in the palace of
Assur-Bani-Pal, Kuyunjik
(Nineveh). British Museum 24" x 27"*



#4 **WOUNDED LIONESSE**
Assyrian. Circa 668 B.C.
Originally in the palace of
Assur-Bani-Pal, Kuyunjik
(Nineveh). British Museum 20" x 33 1/2



#116 **VENUS OF MELOS**
Head from #117 19"



#139 ANTINOUS
Roman, Source unknown 30 1/2"



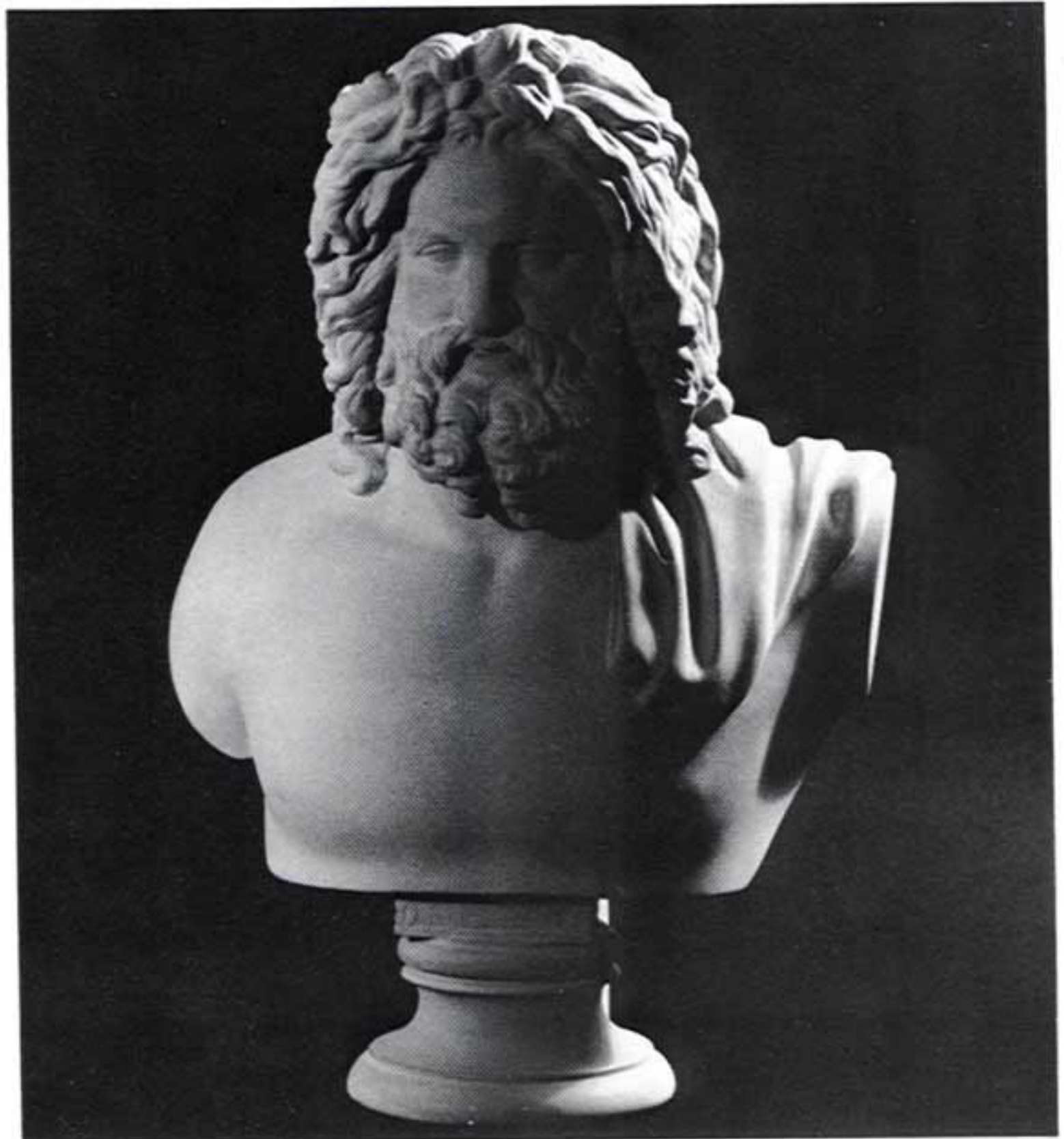
#118 PALLAS ATHENA
Goddess of Wisdom. Circa 280 B.C.
Vatican Museum 26"



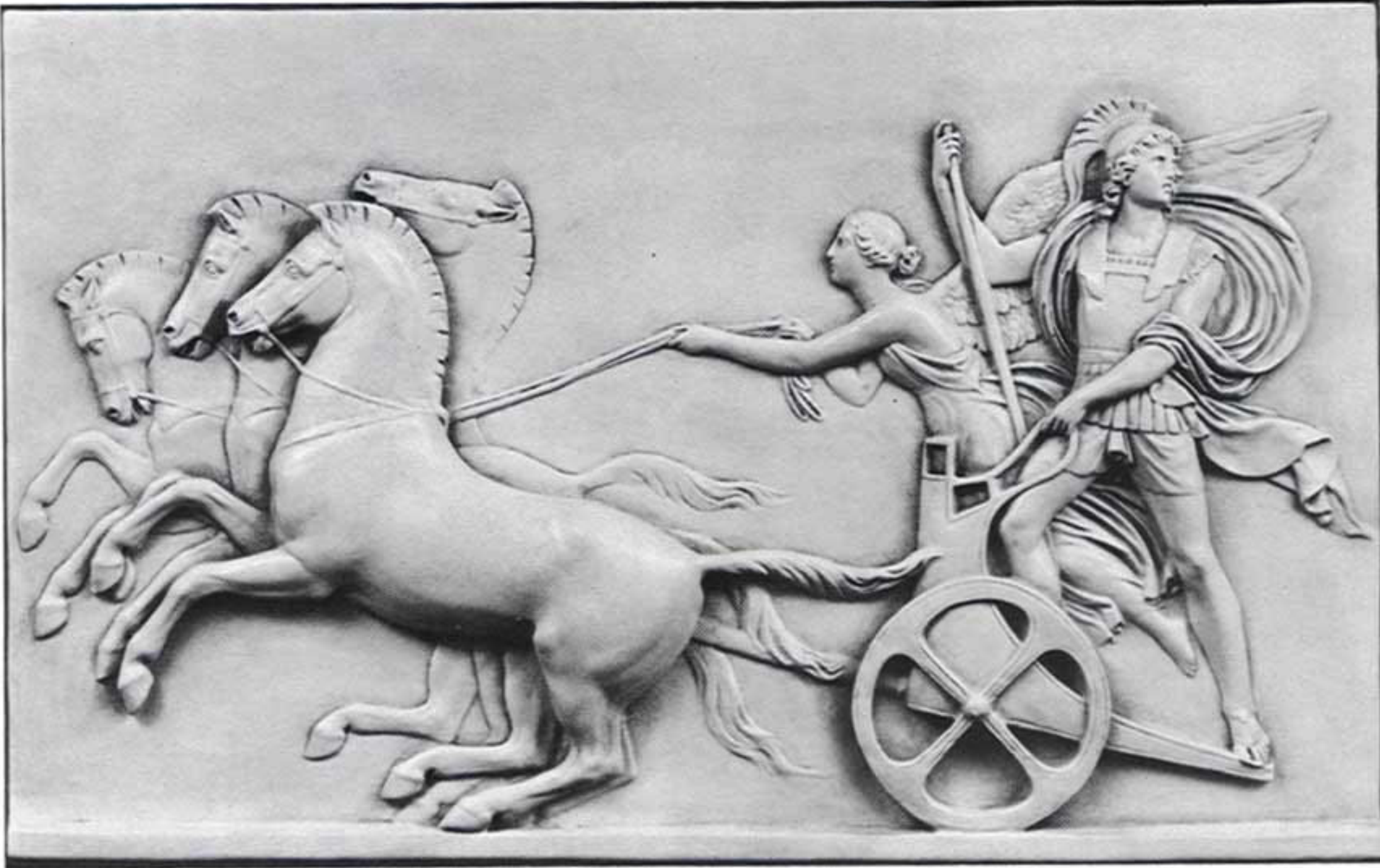
#94 **ZEUS**
Supreme God. Greek
Circa 150 B.C.
Louvre Museum 10 1/2"



#90 **PALLAS ATHENA** (reduction)
Goddess of Wisdom. Circa 280 B.C.
Vatican Museum 13 1/2"



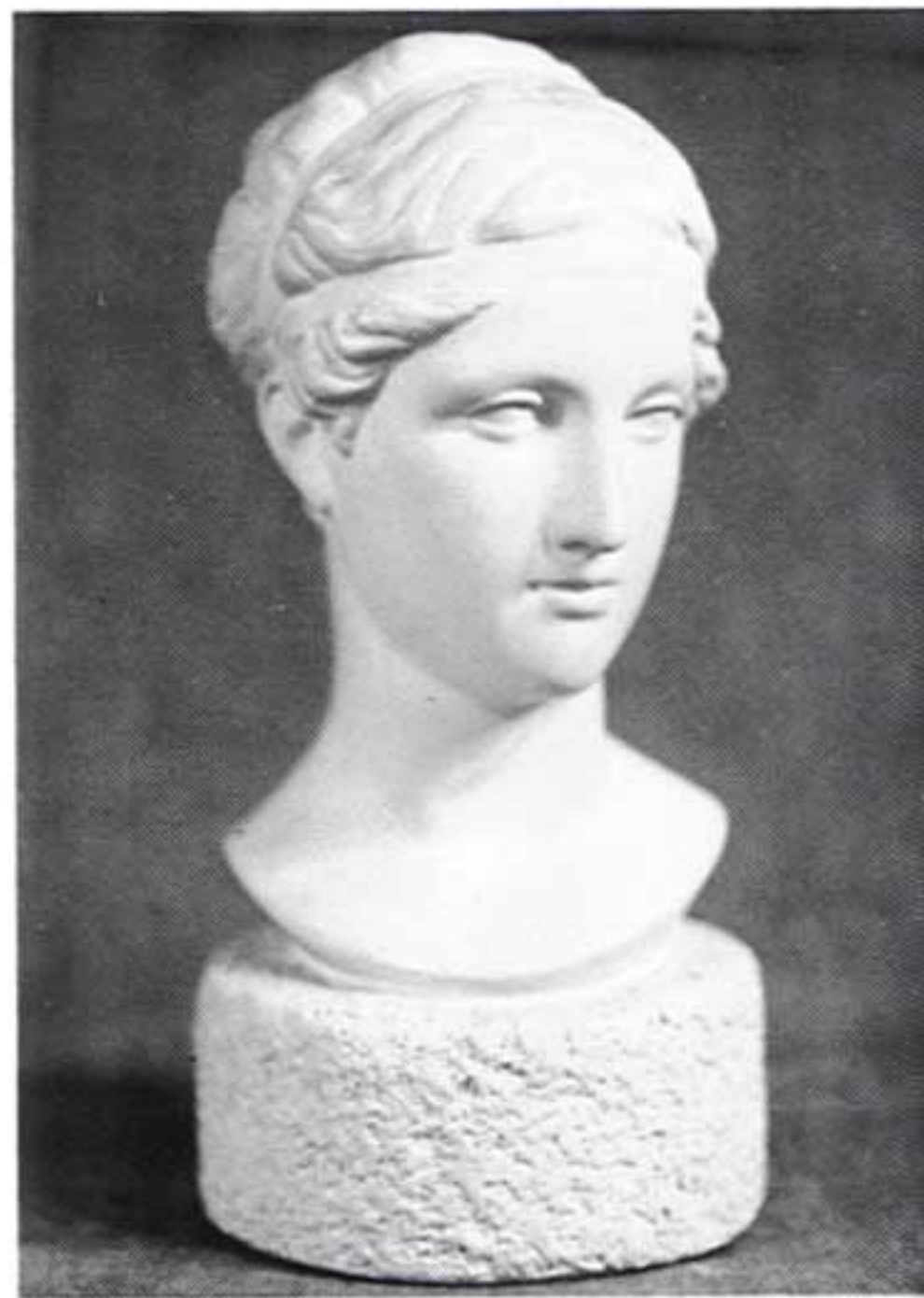
#133 **ZEUS** (reduction)
Supreme God, Roman period
1st century B.C.
Vatican Museum 21"



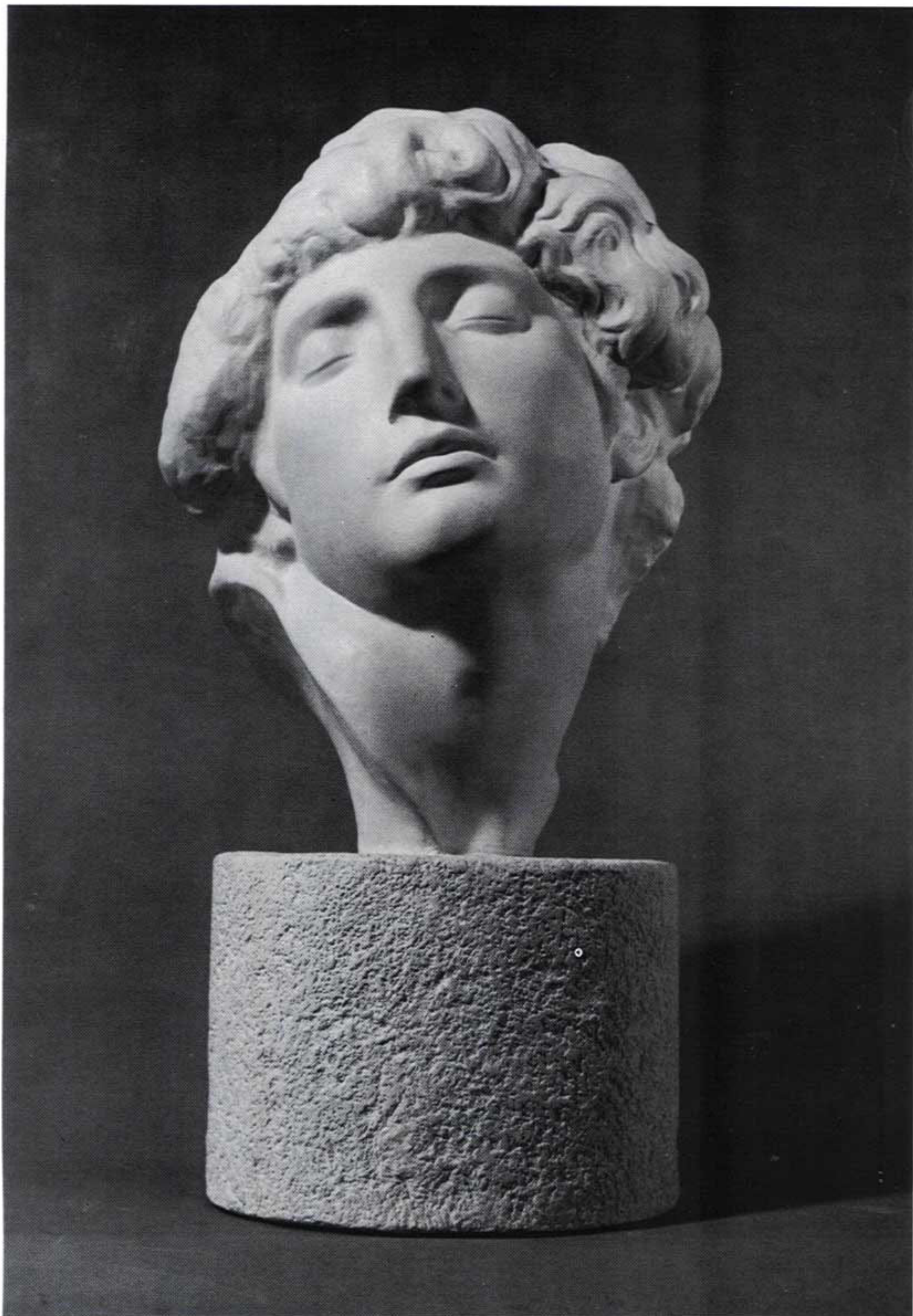
#32 **ALEXANDER IN A CHARIOT**
*From the Frieze called
 The Triumphal Entry of
 Alexander into Babylon
 By Thorvaldsen. From the
 Thorvaldsen Museum, Copenhagen 24" x 38"*



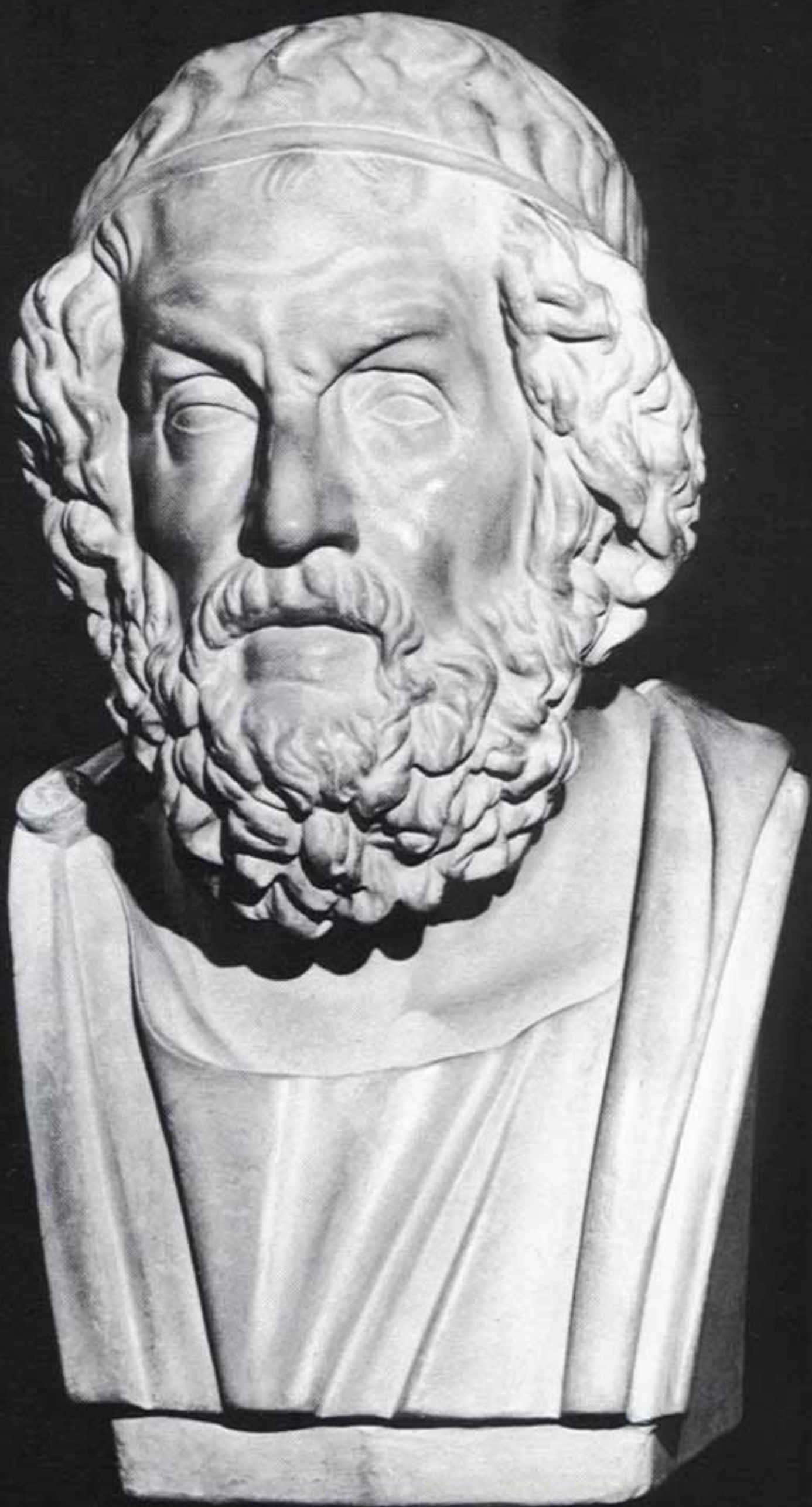
#108 **SHAKESPEARE**
*By Roubilliac
 From the British Museum 16"*



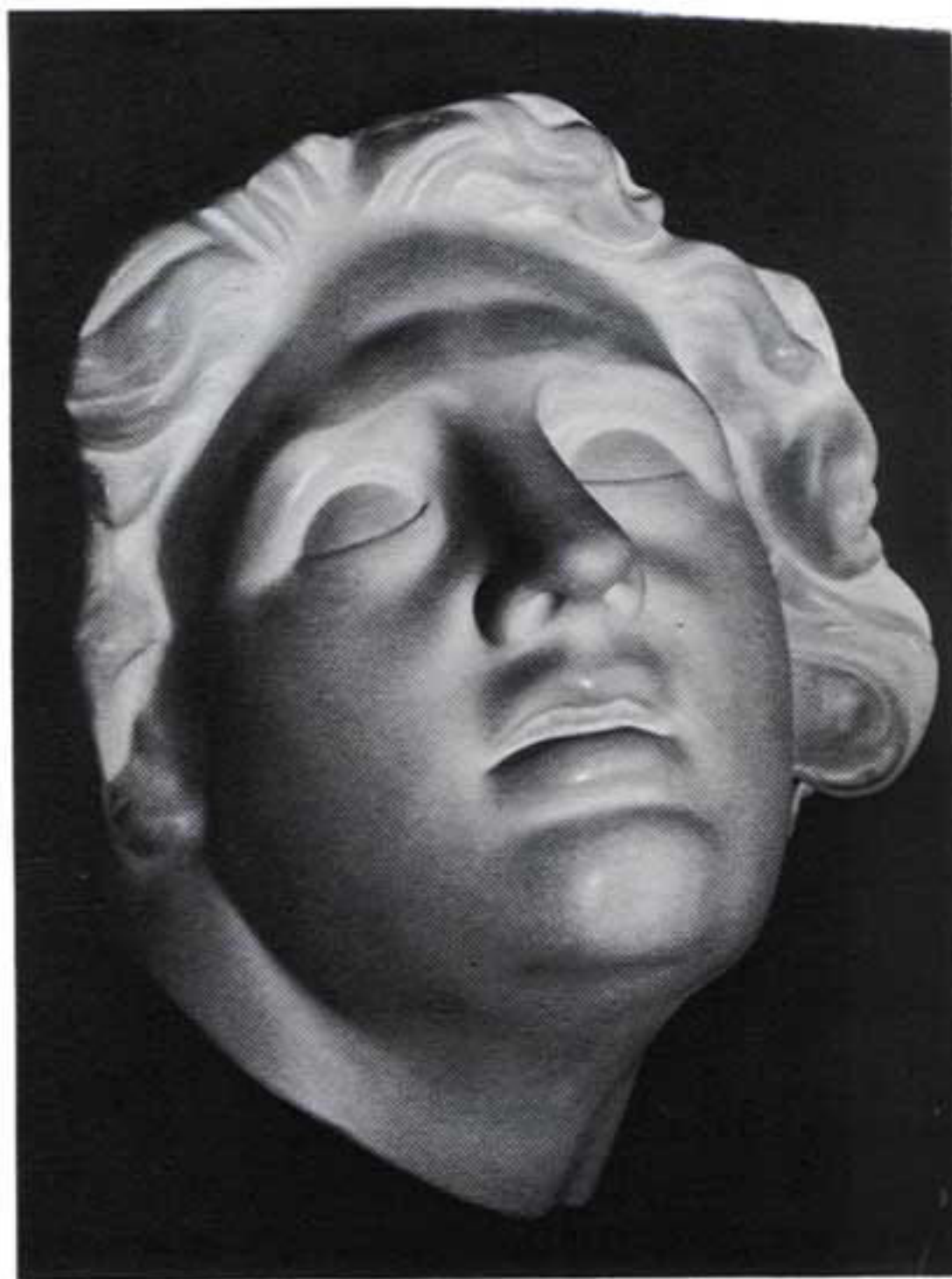
#104 **HEBE (reduction)**
*By Thorvaldsen. Rome 1816.
 Originally purchased by
 Alexander Baring in England.
 Thorvaldsen Museum, Copenhagen 10"*



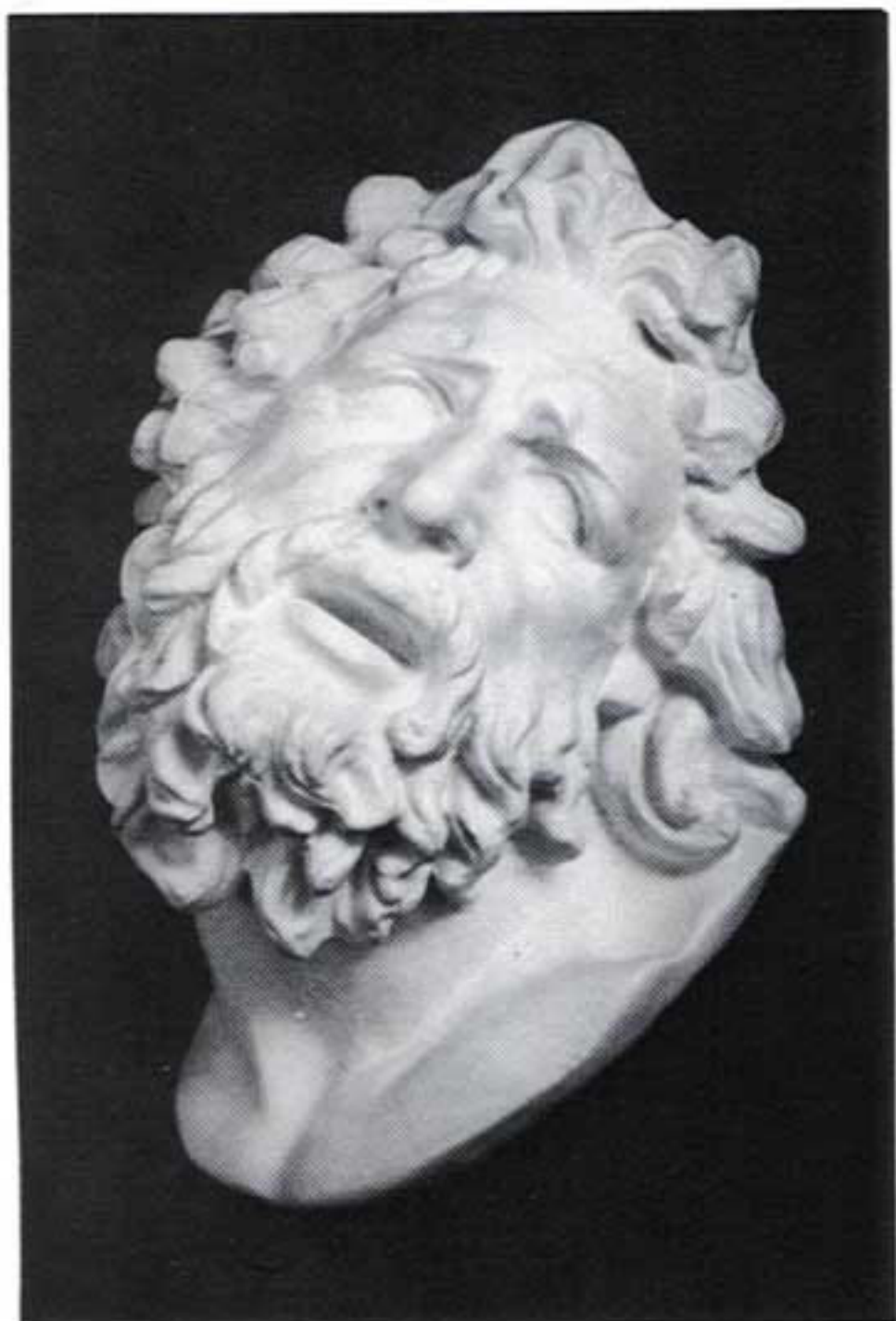
#102 **DYING CAPTIVE**
By Michelangelo
From the Louvre Museum 24"



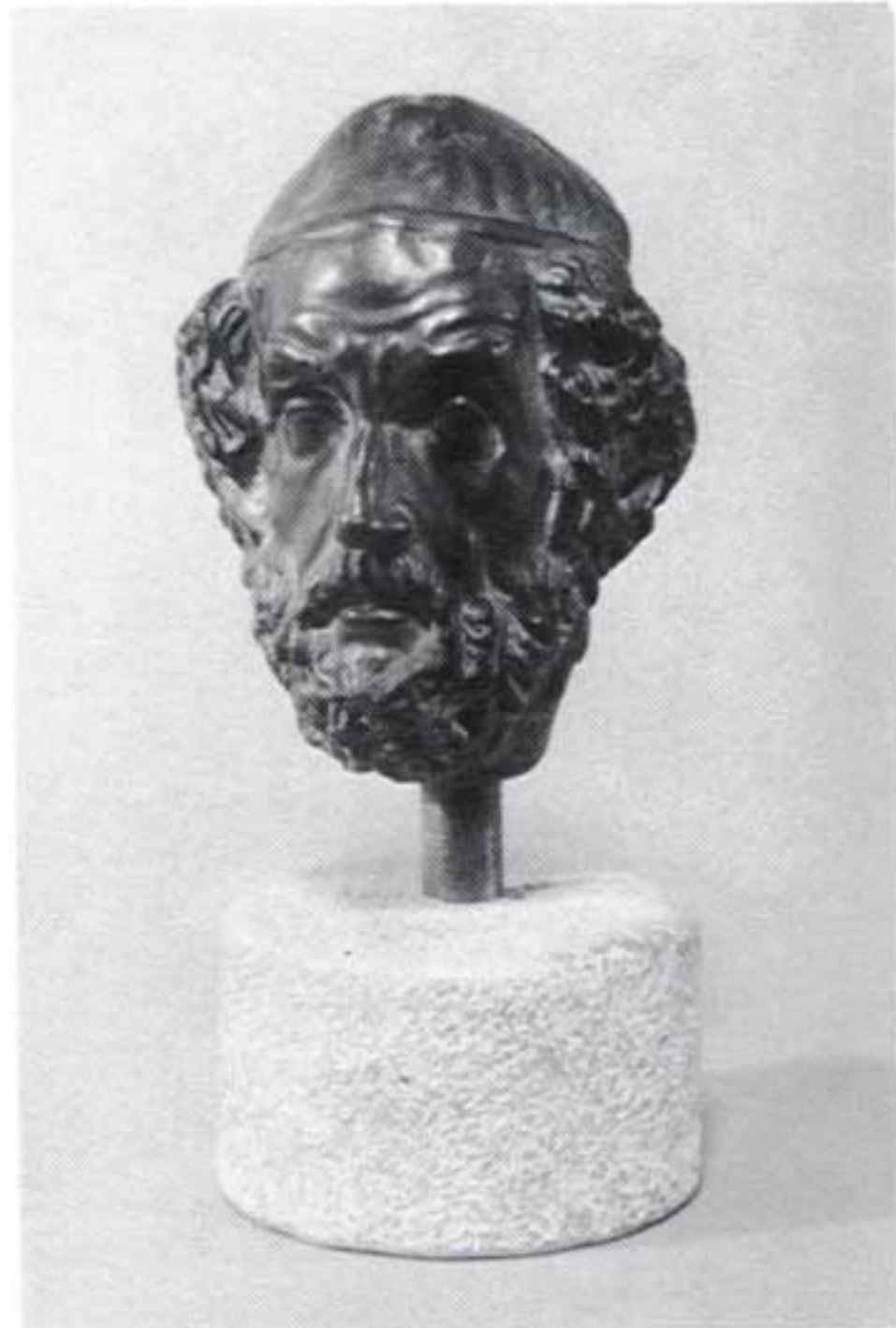
#119 **HOMER**
Circa 150 B.C. Hellenistic.
Naples Museum 23"



#120 **DYING ALEXANDER** (*mask*)
Source Unknown 14" x 16"



#46 **LAOCOON MASK**
From the Laocoon Group.
Vatican Museum 11" x 16"



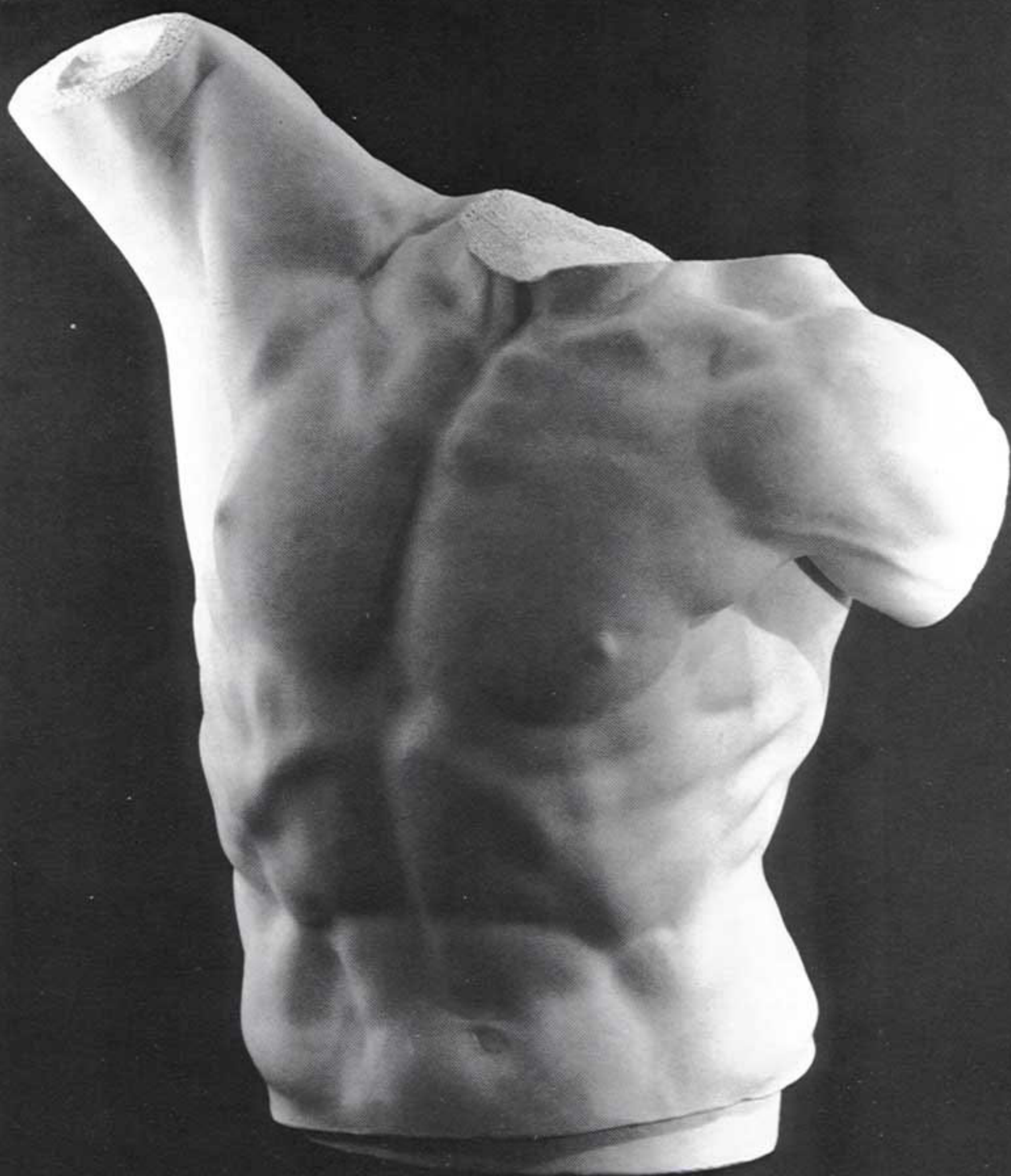
#93 **HOMER** (*reduction*)
Circa 150 B.C. Hellenistic.
Naples Museum 8 1/2"



#182 **MORNING**
By Thorvaldsen
From the Thorvaldsen Museum,
Copenhagen 36" diam.



#183 **NIGHT**
By Thorvaldsen
From the Thorvaldsen Museum,
Copenhagen 36" diam.



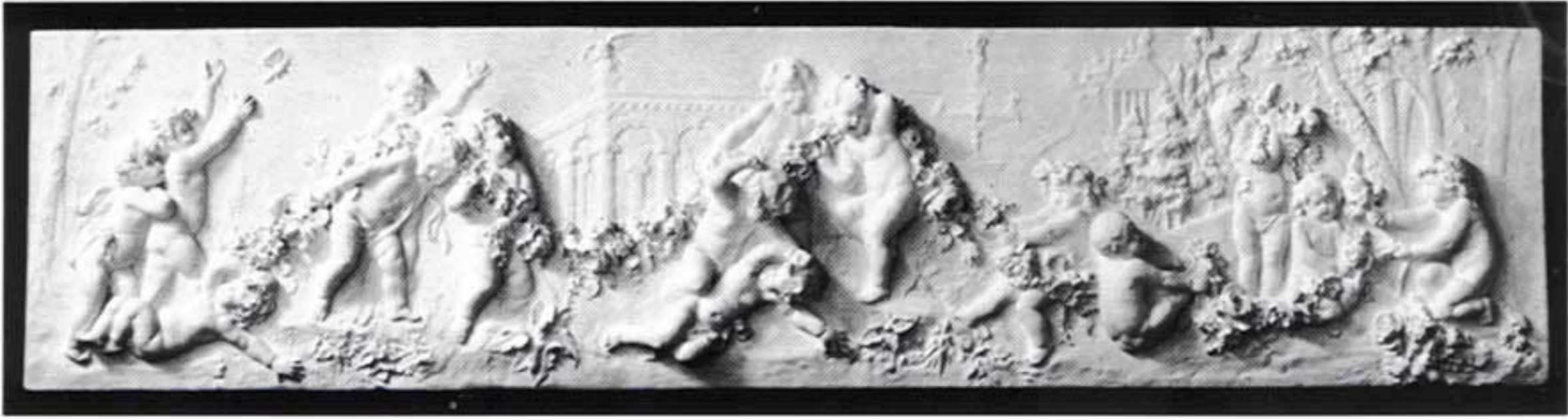
#135 **TORSO**
From the Laocoon Group
by Hagesandros, Polydoros and Athanodoros
Circa 175-150 B.C.
Vatican Museum 29"



#105 **BEETHOVEN**
By John Rogers 17"



#113 **CUPIDS SINGING**
By Giovanni da Bologna 13" x 41"



#194 **CUPIDS WITH GARLAND**
By Pietro Ghiloni
17" x 71 1/2"



#179 **NICOLÓ DA UZZANO**
By Donatello. In the
Bargello, Florence. 13"



#199 **PORTRAIT OF YOUNG GIRL**
By Luca Della Robbia. In the
Bargello, Florence. 13 1/2"



#11 **HOMER**
Greek Poet
15" diam.



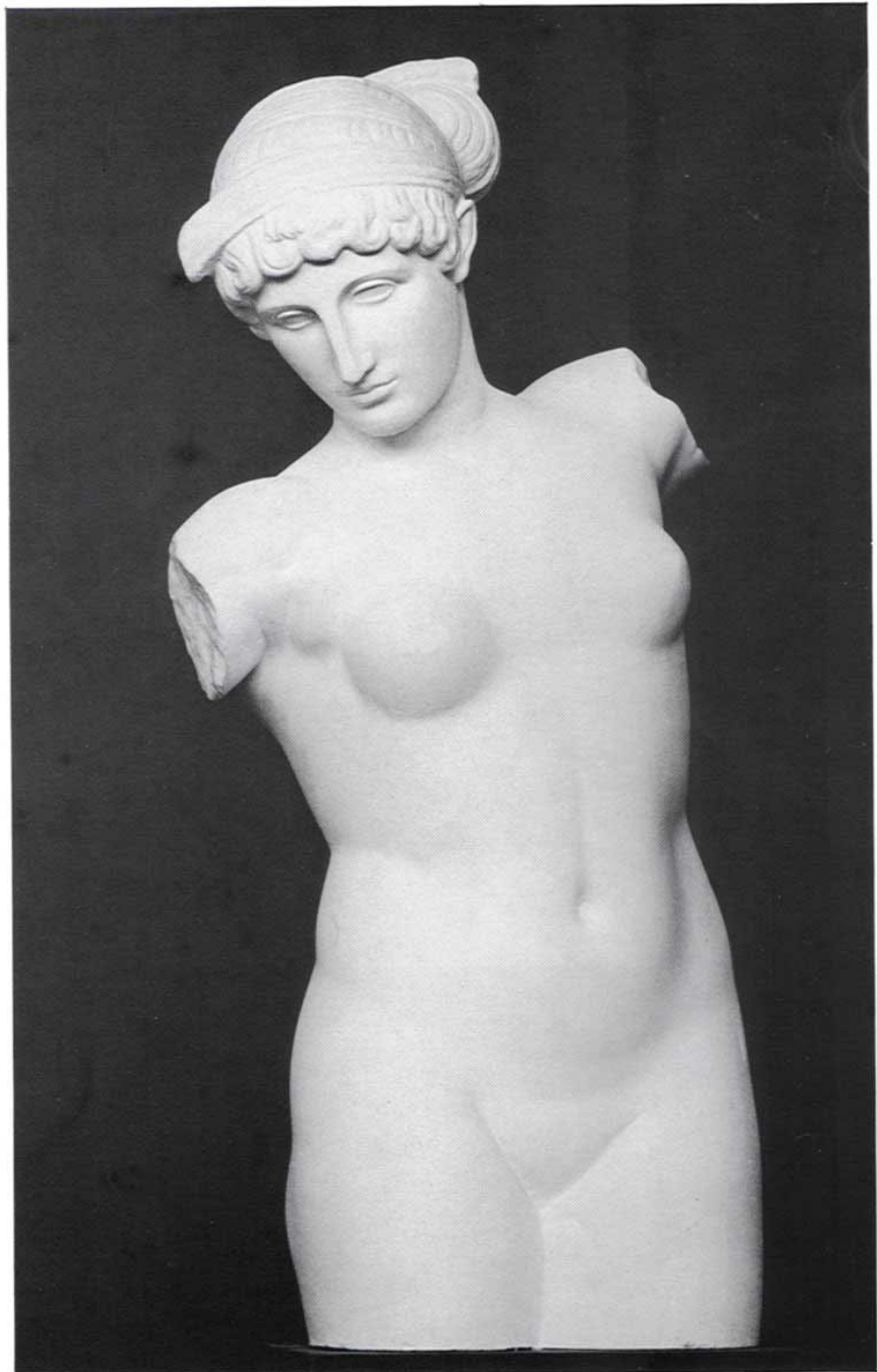
#85 **CUPID, FLYING, BEARING GRAPES**
12 1/2" x 10 1/2"



#65 **CUPIDS, SINGING**
By Potacelli
11" x 42 1/2"



#121 **APOLLO BELVEDERE**
Roman copy of IV century B.C.
Vatican Museum 21"



#122 **ESQUILINE VENUS**
*5th century B.C., Capitoline
Museum, Rome 33 1/2"*



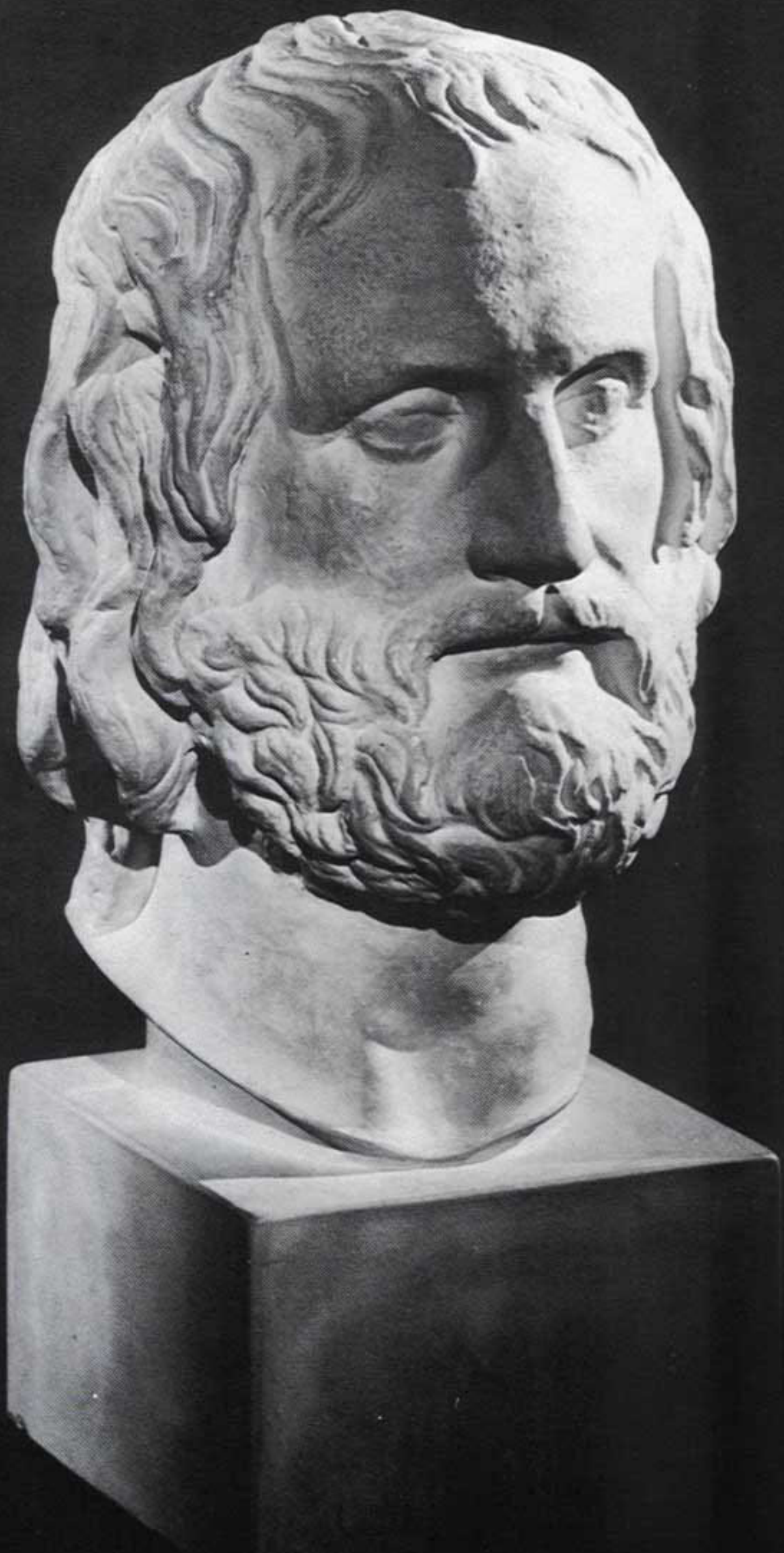
#2 **EGYPTIAN FRIEZE**
*Pharaon, Horus and his wife
meeting the god Thoth*
Louvre Museum 15" x 17"



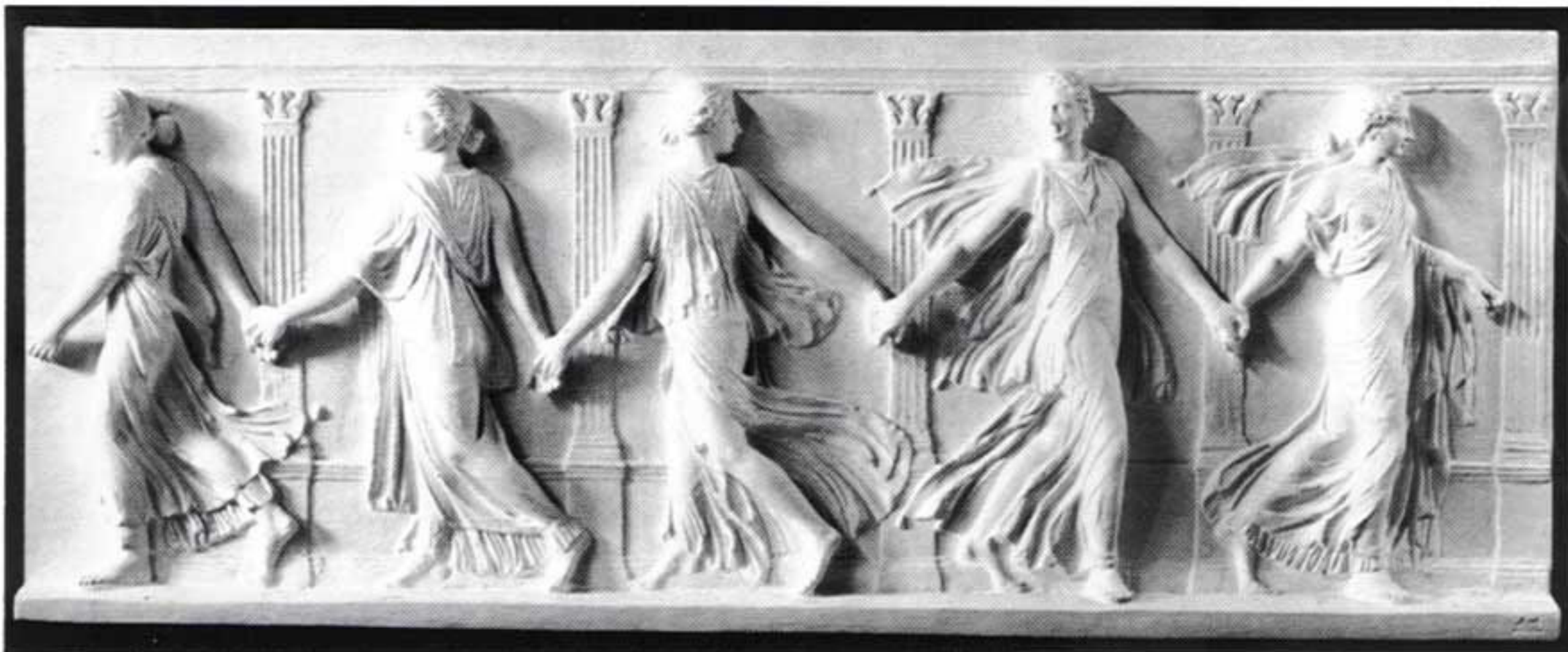
#91 **HEAD OF FAUN**
From the Uffizi Gallery, Florence 18"



#59 **SIAMESE CAT**
13 1/2"



#123 **EURIPEDES**
Greek Playwriter, 480 - 460 B.C.
Vatican Museum 21 1/2"



#193 **BACCHANTES DANCING**
From the Louvre Museum
 74 1/2" x 30"



#173 **KORE**
 CA. 530 B.C.
 Base - 13" x 16" x 20 1/2"
 Sculpture - 43"
 Total height - 63 1/2"



#16 **FRAGMENT** *From*
the western side of
The Parthenon Frieze
 18 1/2" x 38 1/2"



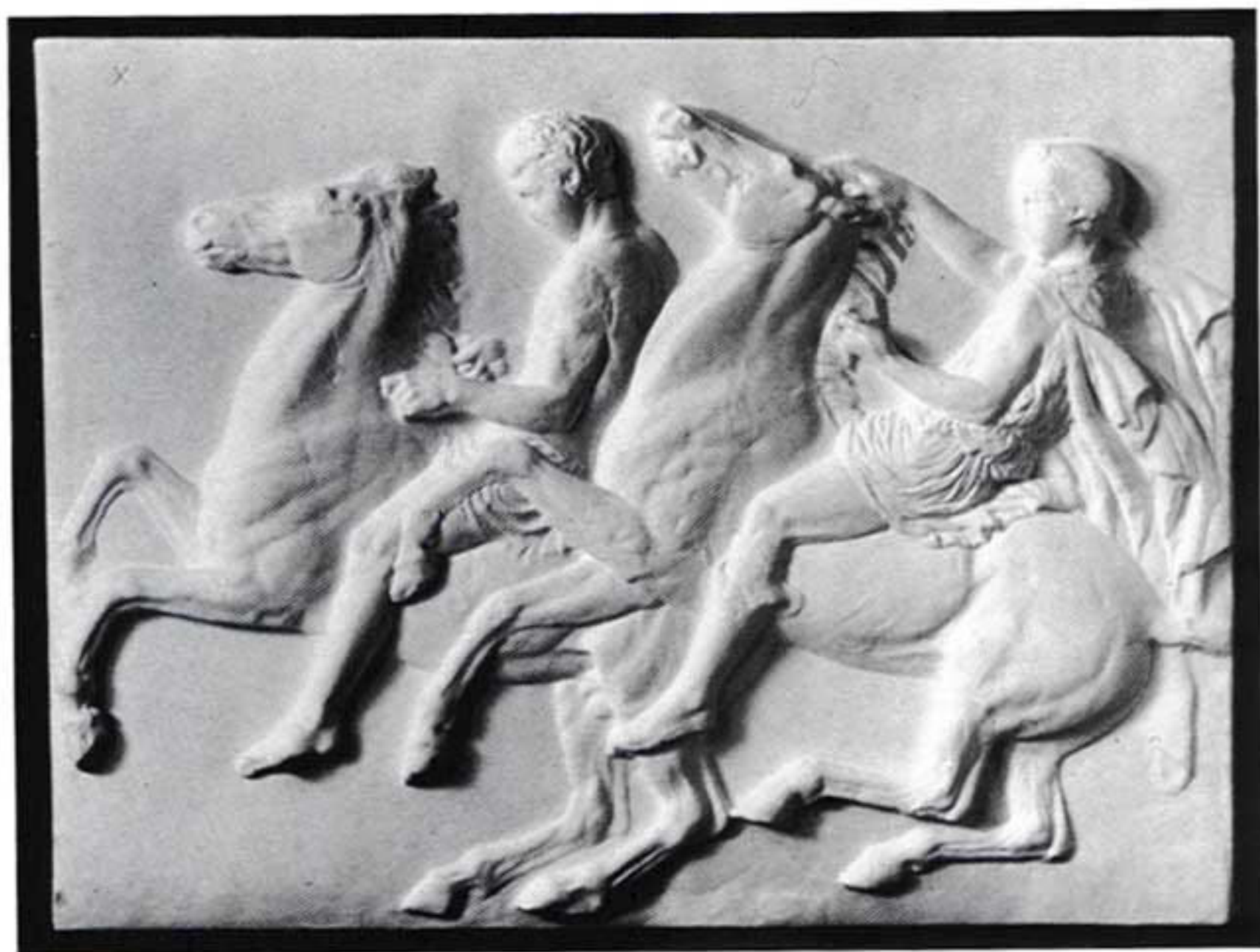
#190 **SLAB #VII**
*From the western frieze of the
Parthenon. 447- 432 B.C.
British Museum 42 1/4" x 55"*



#9 **SLAB #VIII**
*From the western frieze of the
Parthenon. 447- 432 B.C.
British Museum 42" x 55"*



#191 **SLAB #IX**
*From the western frieze of the
Parthenon. 447-432 B.C.
British Museum 42 1/4" x 56"*



#192 **SLAB #X**
*From the western frieze of the
Parthenon. 447-432 B.C.
British Museum 42 1/4" x 56"*

THE FOUR SEASONS
By Thorvaldsen. Originals purchased
Thorvaldsen Museum, Copenhagen



#37 **SPRING**
30" diam.



#35 **SUMMER**
30" diam.

THE FOUR AGES OF LIFE
by William of Wirtzburg 1n 1824.



#36 **AUTUMN**
30" diam.



#38 **WINTER**
30" diam.



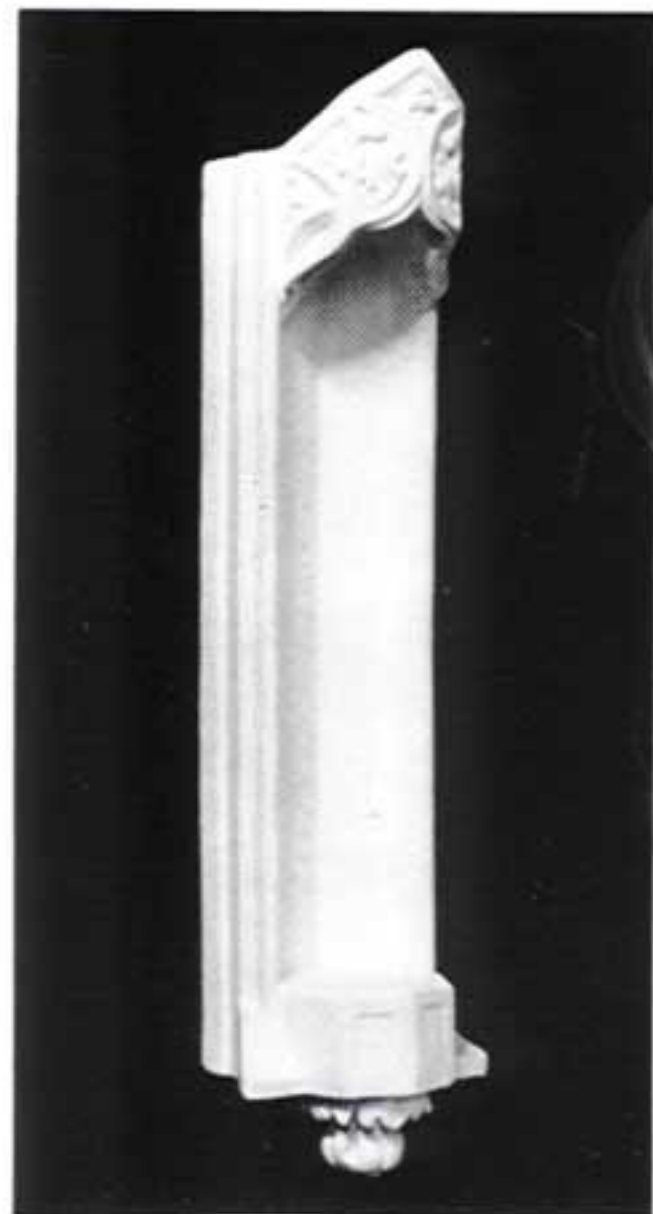
#180 NYMPH
By German Pilon
From the Louvre Museum
70" x 18 1/2"



#181 NYMPH
By German Pilon
From the Louvre Museum
70" x 18 1/2"

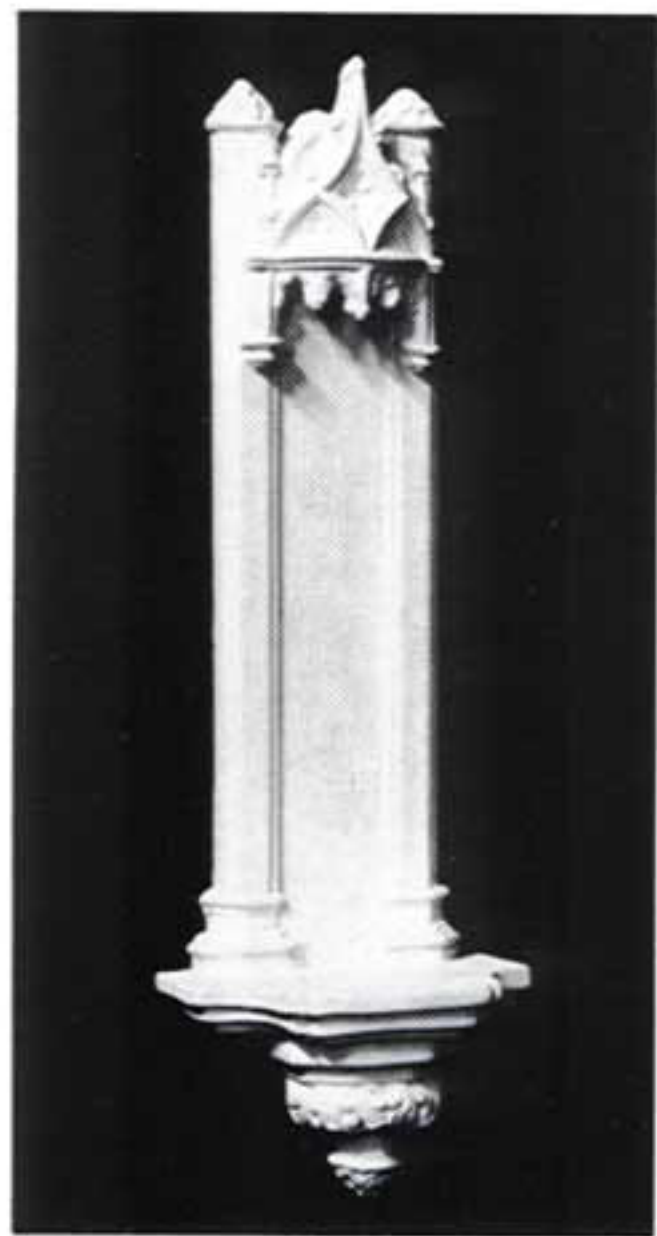


#184 **NYMPH**
By Jean Goujon. From the
Fountain of the Innocents, Paris
93" x 25"



#195 **GOTHIC SCONCE**
32"

#159 **GOTHIC SCONCE**
(reduction) 13 1/2"



#196 **GOTHIC SCONCE**
28"



#188 **MINERVA OF VELLETRI**
From the Louvre Museum
40"



#92

SOPHOCLES

Greek Playwriter. 496 - 406 B.C.
British Museum 24"



#12 **ZEUS AND GIANTS** (*reduction & restoration*)
 From the Great Altar of the
 Zeus at Pergamon. Circa 175 B.C.
 Pergamon Museum, Berlin 13" x 18½"

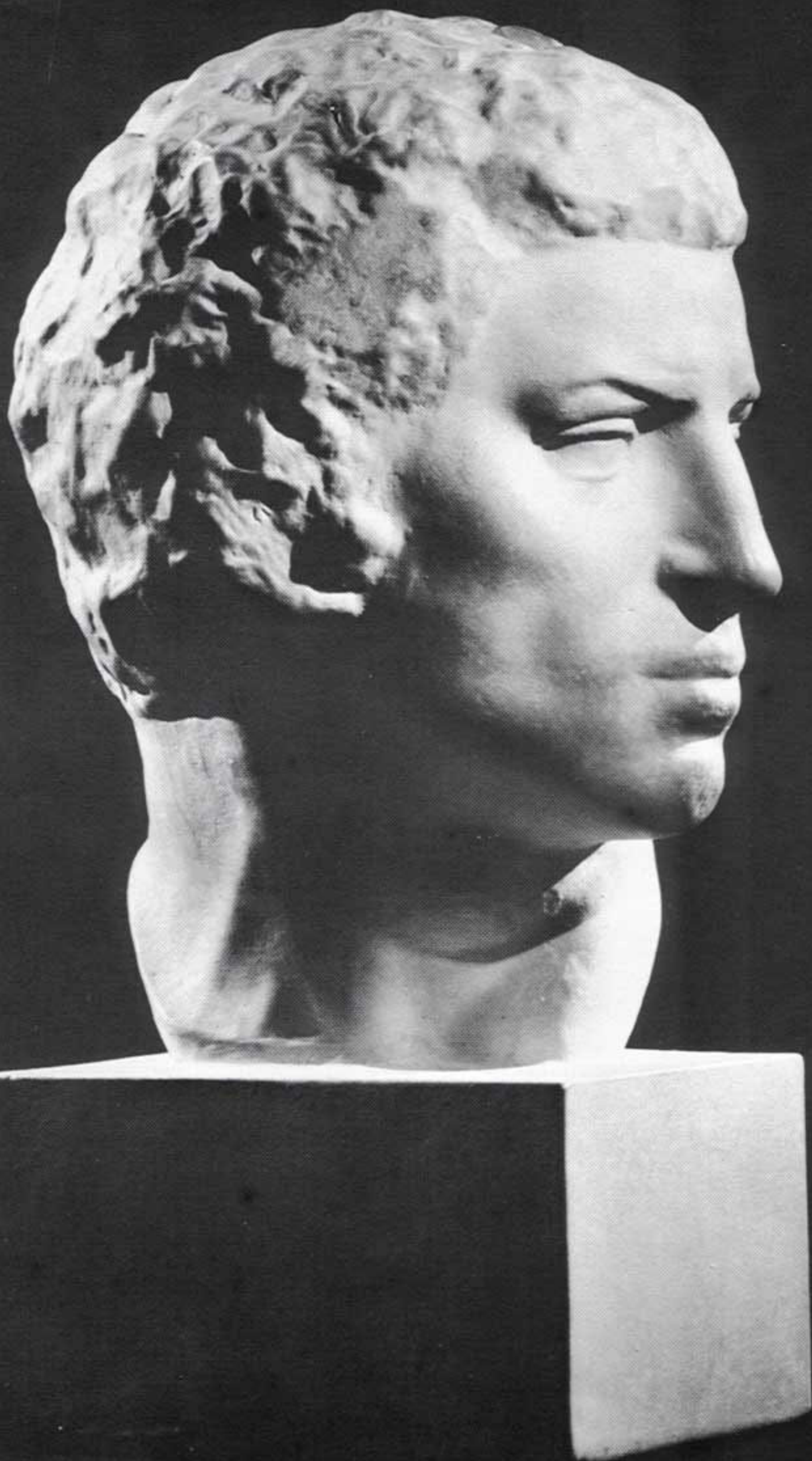


#141 **ARIADNE** (*reduction*)
 From the Vatican Museum 10"

#189 **ARIADNE** 28"



#84 **DISCOBOLOS** (*reduction*)
 Attributed to Myron. 5th
 century B.C. From a bronze
 in the Palazzo Lancellotti, Rome. 8"



#100 **BRUTUS**
By Michelangelo. CA. 1540
Bargello Museum, Florence 21"



#124 **FLORENTINE GIRL**
By Luigi Pampaloni, 1831
12 1/4"



#103 **SINGING BOY**
Florentine 12"



#42 **CUPIDS DANCING**
From ivory carving, in the
Munich Museum 4 1/2" x 5 1/2"



#42A **CUPIDS DANCING**
From ivory carving in the
Munich Museum 4 1/2" x 5 1/2"



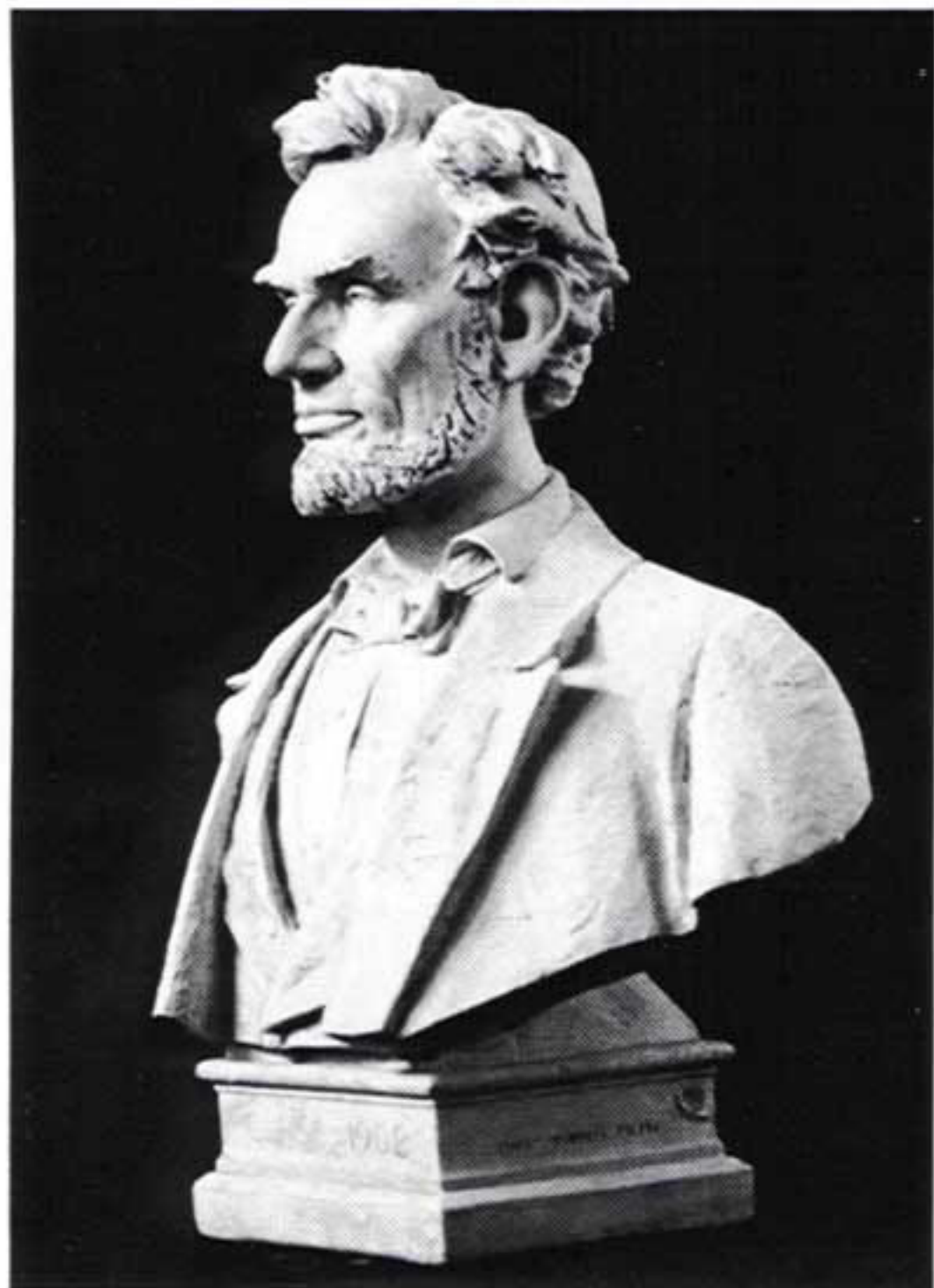
#177 **AURORA**
 By Gigli - After Guido Reni
 46 1/2" x 20"



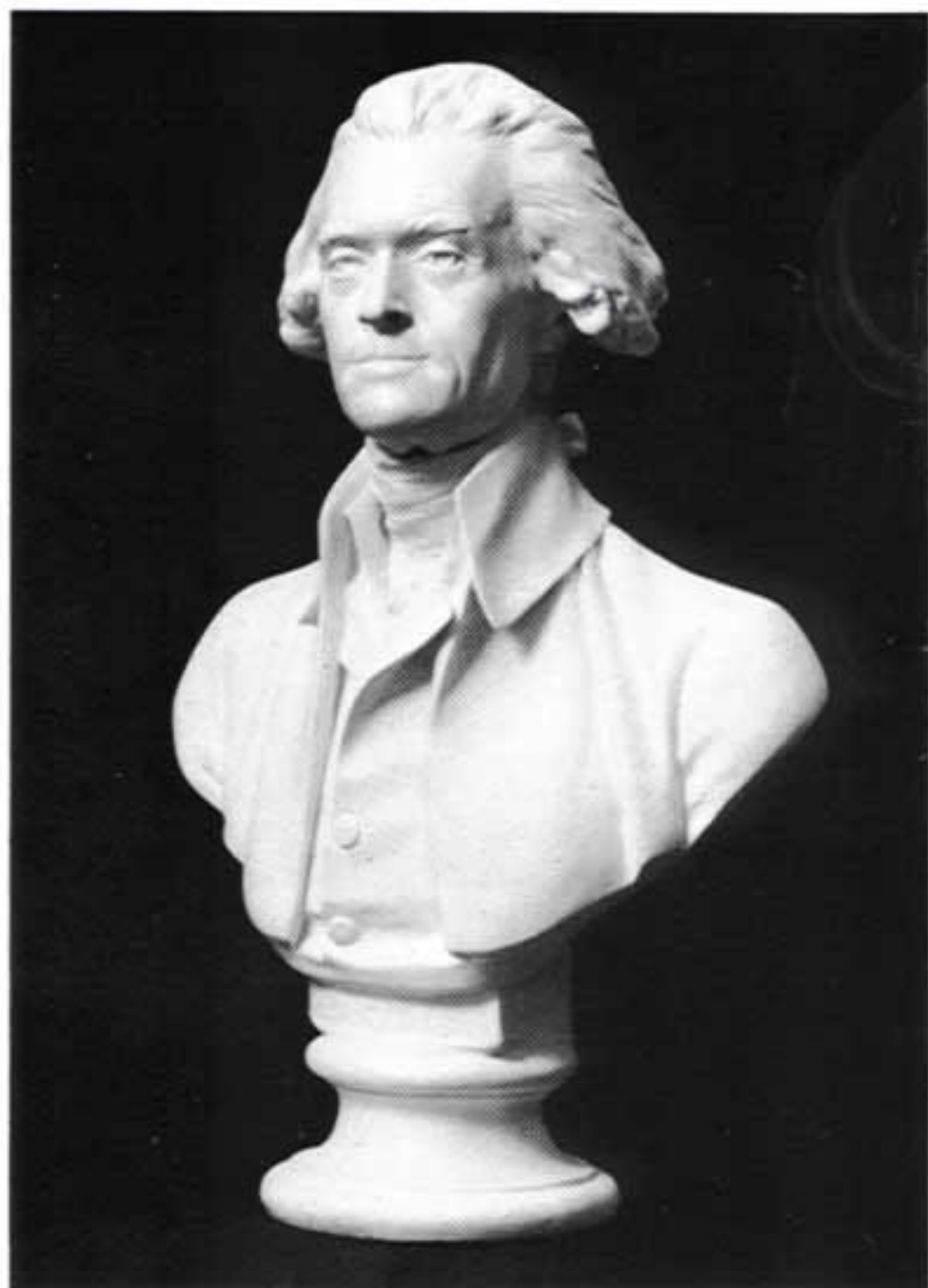
#134 **MADONNA AND CHILD**
 By Donatello
 13 1/2" x 16 1/4"



#45 **CUPID HEAD**
 Fragment from Cupids Singing
 By Giovanni da Bologna
 12" x 9"



#204 **ABRAHAM LINCOLN**
By Max Bachman
31 1/2"



#203 **THOMAS JEFFERSON**
By Houdon
29 1/2"



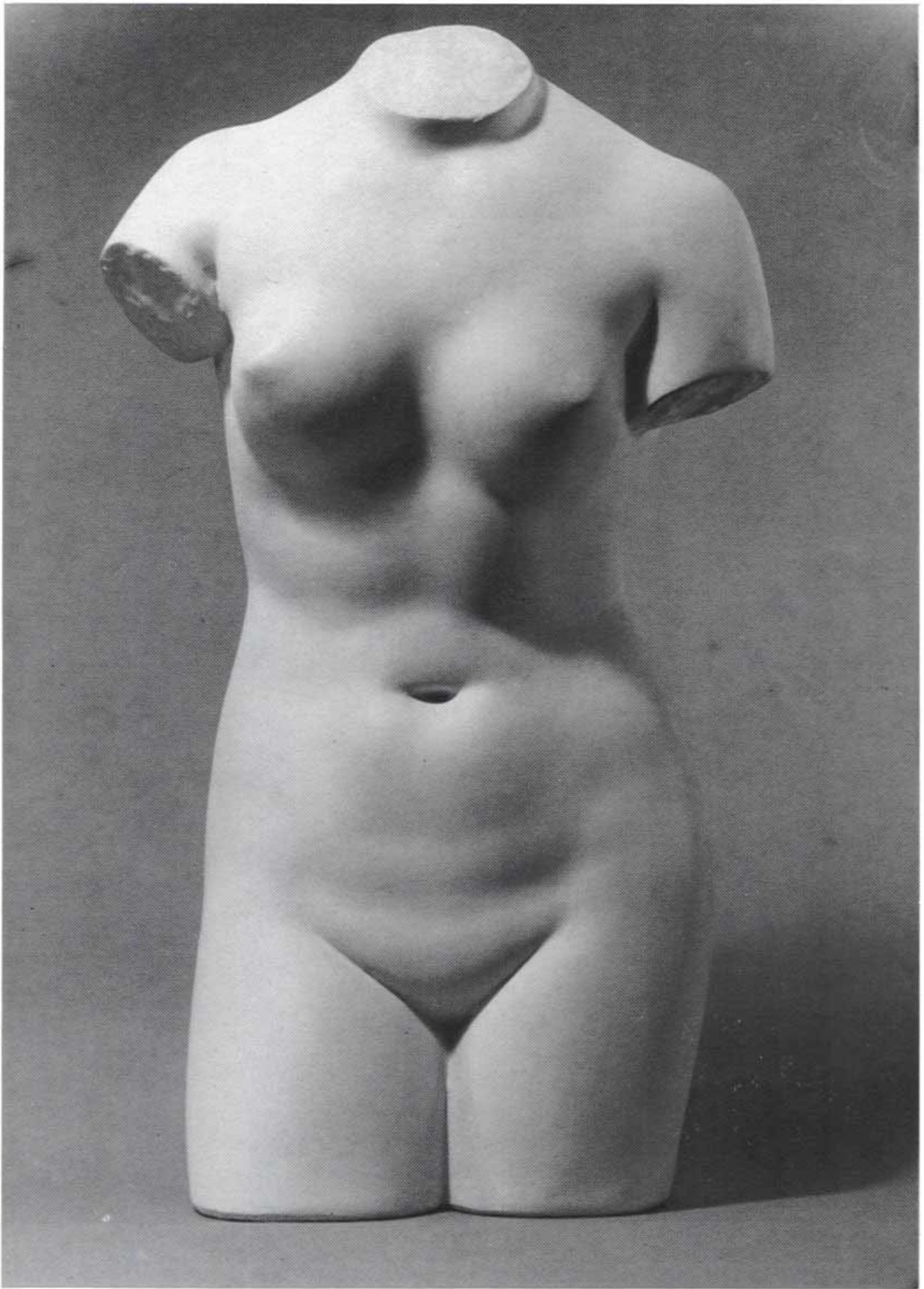
#202 **BENJAMIN FRANKLIN**
By Houdon
26 1/4"



#201 **GEORGE WASHINGTON**
By Houdon
29 3/4"



#101 **GIULIANO DE MEDICI**
*By Michelangelo. From the Capella
Medici in the church of
San Lorenzo, Florence. CA 1533 21 3/4"*



#63 **VENUS DE MEDICI**
Attributed to Praxitelles.
4th century B.C.
Uffizi Gallery, Florence 28 1/2"



#69 **HORSE OF SELENE**
*From the east pediment of the
Parthenon. 447 - 432 B.C.
British Museum 24" x 33"*



#140 **NIKE FIXING HER SANDAL** 38" x 21 ³/₄"
*From the Temple of Athena Nike,
or Nike Apteros. Circa
421 - 415 B.C. Acropolis Museum*

#8 **NIKE FIXING HER SANDAL (reduction)** 9" x 15 ¹/₂"



#198 **ORPHEUS, EURYDICE AND HERMES**
In the Naples Museum
47" x 39"



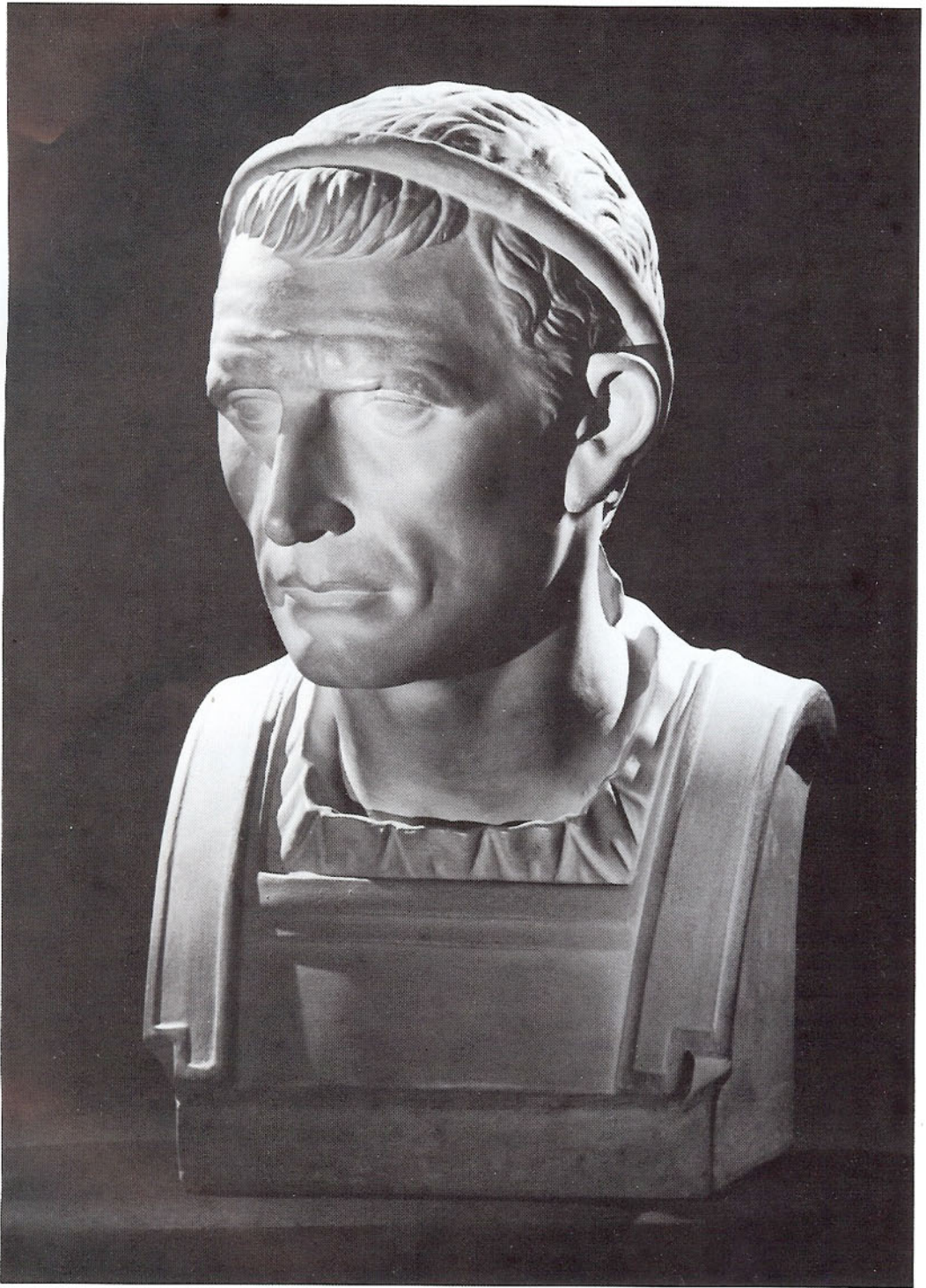
#17 **HERMES FOLLOWED BY ONE OF THE GRACES**
In the Louvre
37" x 33"



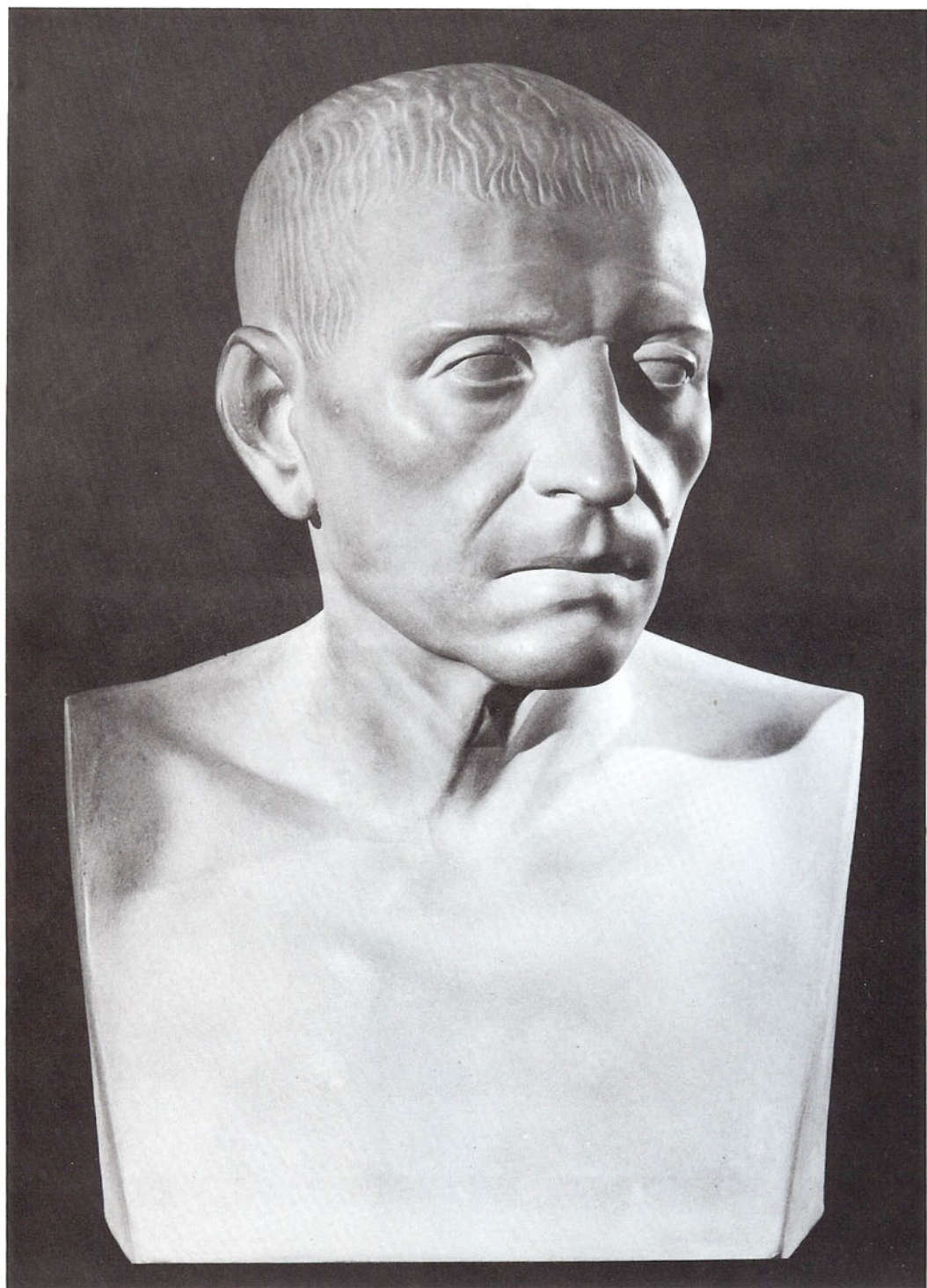
#83 **NEFERTITI** (*reduction*)
18th dynasty. Amarna school.
Berlin Museum. Circa 1370 B.C. 19 1/2"



#98 **JULIUS CAESAR**
*Statesman, Emperor, Soldier
and Author. Circa 102 - 44 B.C.
British Museum 20"*



#126 ANTIOCHUS III
"The Great" CA. 223 B.C.
Louvre Museum 20"



#127 **CICERO**
Roman Orator, Statesman. Circa
106 - 42 B.C. Capitoline Museum 18"



#109 DANTE ALIGHIERI
By F. Tarquinio 11 1/2" x 8 1/2"



#20 Detail from the bronze gates
of the Baptistry, Florence
By Lorenzo Ghiberti 6" x 6"



#25 SATYR MASK
By Carpeaux 5" x 8"



#128 DANTE ALIGHIERI
Believed to be from a mould made
from life. 1265 - 1321
Naples Museum 15 1/2"



#34 **DANCE OF THE MUSES**
 By Thorvaldsen. Rome, 1824.
 Originally purchased by Baron
 Von Schubart from Montenero.
 Thorvaldsen Museum, Copenhagen 30" x 63"

#33 **DANCE OF THE MUSES (reduction)**
 14 1/2" x 31"



#54 **SAINT FRANCIS OF ASSISI (reduction)**
 Attributed to Pedro De Mena.
 17th century wood carving from
 Toledo Cathedral, Spain. 17"



#138 **ST. JOHN**
 By Donatello
 From the Pinacoteca, Florence 16"



#130 **ST. GEORGE**
*By Donatello. Bargello
Museum, Florence 21"*



#27 **PORTRAIT OF A YOUTH**
By Matteo Civitali
From the Church of San Martino
Lucca, Italy 7" x 10 ½"



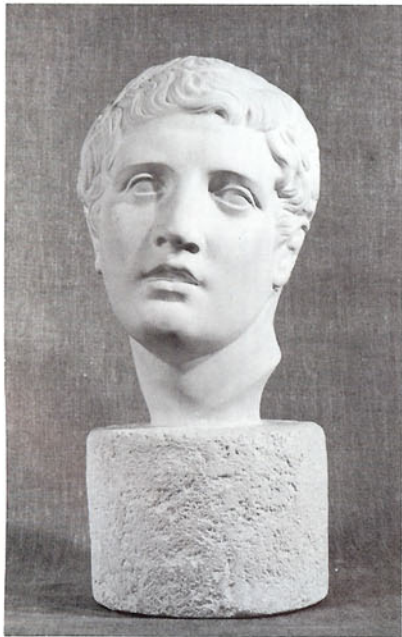
#28 **PORTRAIT OF A GIRL**
By Matteo Civitali
From the Church of San Martino
Lucca, Italy 7" x 10 ½"



#106 **TORSO OF GODDESS ISIS**
(French portrayal)
Egyptian Goddess of
Fertility and Motherhood. 19 ½"



#82 **GRIFFIN PLAQUE**
Frieze from the Trajan
Forum, Rome 32" x 45 1/2"



#169 **DISCOBOLOS**
From the Vatican Museum
17"



#170 **ESQUILINE VENUS**
From #122
16"



#165 VENUS AT THE BATH
By Ch. Allegrain 3'



#58 **MEDITATION**
By Pietro Ghiloni 9"



#29 **SAINT JOHN**
By Donatello 15" x 20"



#131 **MADONNA AND CHILD**
By Lucca della Robbia.
In the Church of Santa Croce.



#132 **MILTON SHIELD**
by Morel Ladeuil. South
Kensington Museum 33 1/2" x 25 1/2"



#111 **ANGEL HEAD**
by Nanni d'Antonio di Banco
Fragment of relief over a door
of the Duomo, Florence 16" x 16"



#112 **ANGEL HEAD**
By Nanni d'Antonio di Banco
Fragment of relief over door
of the Duomo, Florence 12" x 12"



#136 **MADONNA AND CHILD**
By Michelangelo, Circa 1504
Known as the Pitti Madonna
Bargello Museum, Florence
32 1/2" x 36"



#110 **WALL BRACKET**
By Michelangelo Top 10" x 11" Height 24"



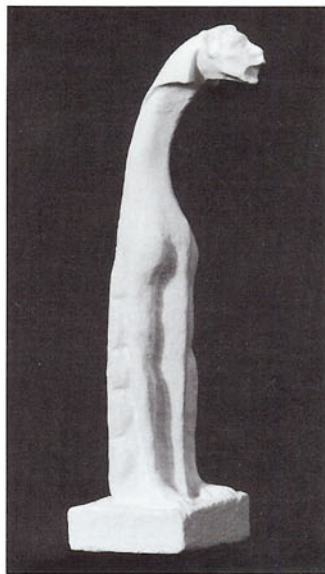
#80 **GARGOYLE** (*reduction*)
From Notre Dame Cathedral 10 1/2"



#24 **MASK** (*leaf*)
By Michelangelo
From the Laurentian
Library, Florence 8" x 12"



#212 RENAISSANCE BRACKET
Height 10"



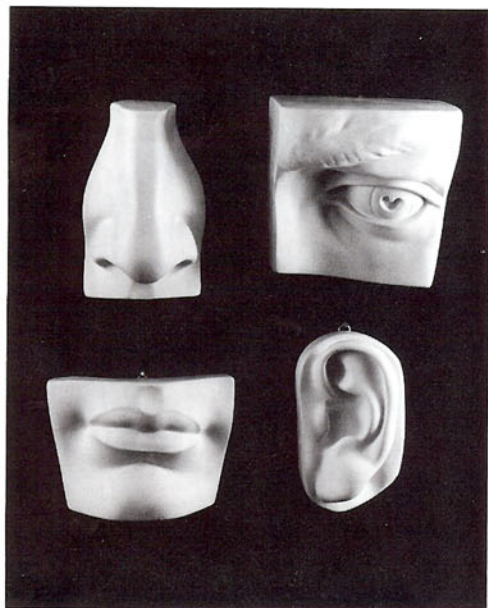
#23 LONGNECK GARGOYLE (reduction)
From Notre Dame Cathedral 13 3/4"



#22 CANDLESTICK
15"



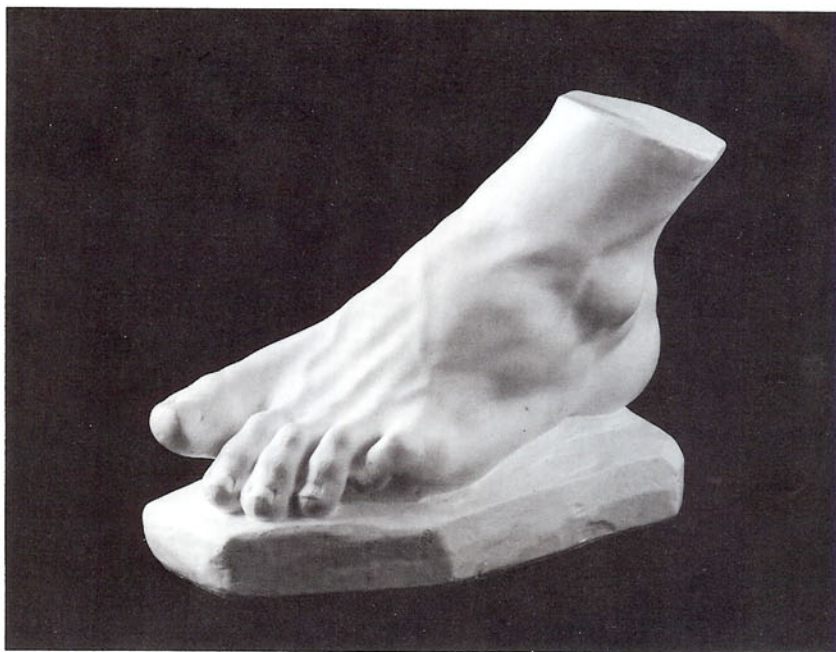
#26 GRIFFIN
5" x 11 1/2"



#150 **DETAILS FROM DAVID'S HEAD**
By Michelangelo



#151 **FEMALE HAND**
From life



#152 **MALE FOOT**
From the statue of Hercules Farnese
14 1/2" long 11 1/2" high



#153 MALE ANATOMICAL ARM
By Houdon
Lifesize (30")



#154 ANATOMICAL MASK
By Houdon
Lifesize



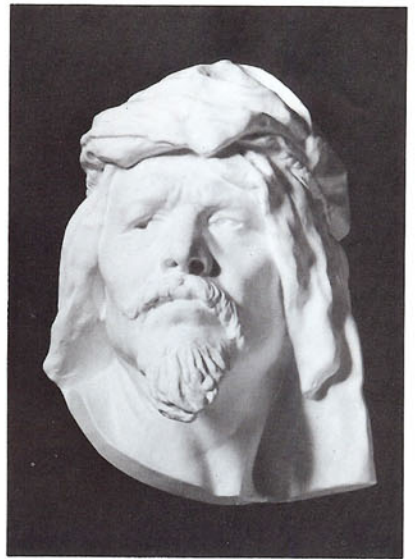
#155 ANATOMICAL MALE FOOT
Lifesize



#156 FEMALE FOOT
From Life



#157 **TWO HEADS FROM TRAJAN COLUMN**
Rome. 12½" x 16"



#158 **NUBIAN MAN**
(mask) By Carpeaux
Lifesize



#197 **LION GARGOYLE**
From the Temple of Antonius,
Rome. 17 ½" x 17 ½"



#67 **SILENUS** (reduction & fragment)
Attributed to Lysippos. 3rd
century B.C.
Vatican Museum 32"



#87 **LEMNIAN ATHENA**
*Attributed to Phidias, Circa
450 B.C. Originally from the
island of Lemnos.
Museum Civico, Bologna 18"*



#14

BACCHIC DANCE

*Originally from Herculaneum.
Circa 100 B.C. Found in 1776 on
the site of ancient Gaiii.
National Museum, Naples 26" x 27"*



#15

SATYR WITH PANTHER

*Originally from Herculaneum.
Circa 100 B.C. Found in 1776 on
the site of the ancient Gaiii.
National Museum, Naples 18" x 26"*



#99 **BUST OF DAVID** (*Original size*)
*From the colossal statue by
Michelangelo in the Academia,
Florence 53"*

GIUST GALLERY FINISHES

Every Giust reproduction is custom finished. In addition, most pieces can be ordered in flat white.



STONE



SANDSTONE



WHITE PATINA



TERRA COTTA



BRONZE



THE GIUST GALLERY

Giust's
CAPRONI
REPRODUCTION

1920 Washington Street
Boston, Massachusetts 02118
(617) 445-3800