

CAPRONI COLLECTION

 SCULPTURE REPRODUCTIONS 

Visit us on the web at capronicollection.com

As this digital catalog is not copyrighted, please reference the Caproni Collection as the source if you copy or use this historical material.

Digitized by Caproni Collection

CAPRONI CASTS

Reproductions of Sculpture

Selected from the

Masterpieces of the World

{PART ONE}



PRICE ONE DOLLAR

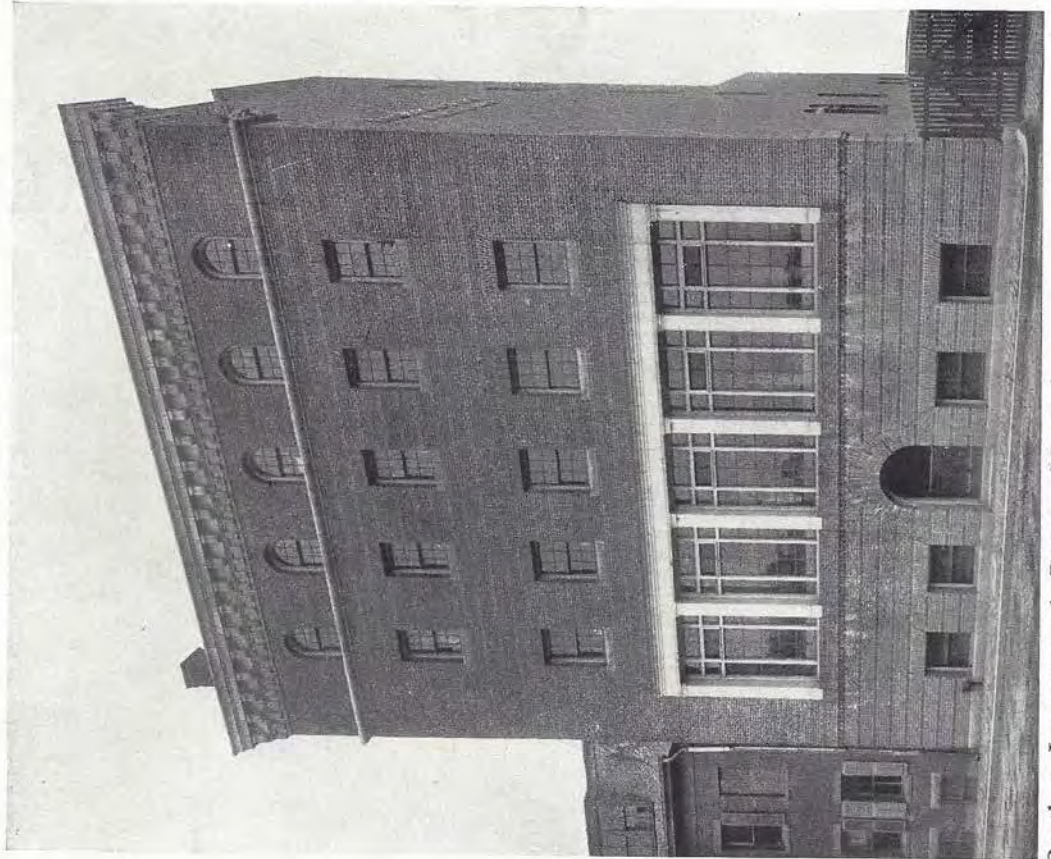
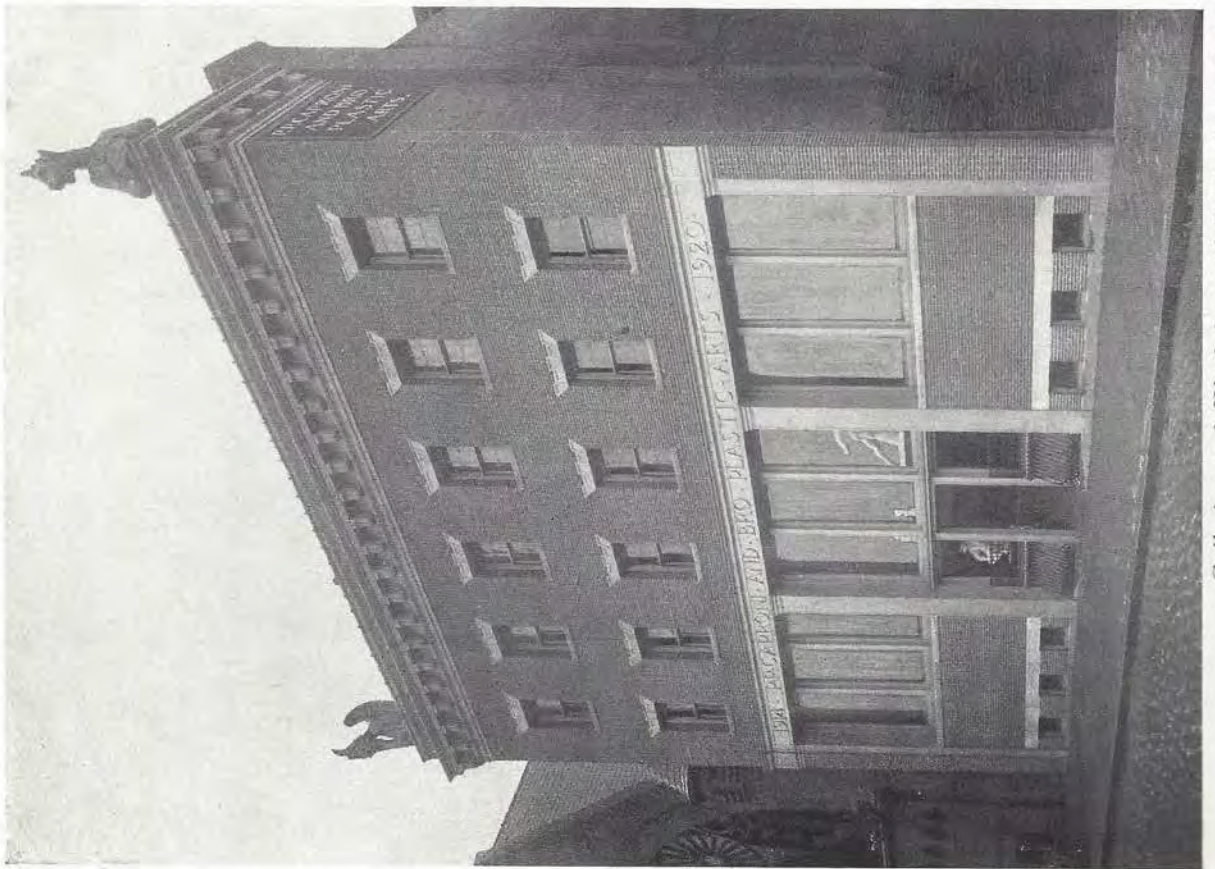
P. P. CAPRONI AND BROTHER,
INCORPORATED
BOSTON, U. S. A.



WE PUBLISH a special catalogue of subjects for Drawing and Modeling Classes, such as reproductions of Statues, Busts, Reliefs, Torsos, Animals, Parts of the Body, Fruits, Flowers, Leaves, Studies of Ornament, Architectural Details and Anatomical Studies. The price of this catalogue is One Dollar per copy. One copy is furnished free of charge to Art Schools and Supervisors of Art intending to purchase this line of goods. An applicant for free catalogue must state his official position.

P. P. CAPRONI and BROTHER, Incorporated
Boston, Massachusetts, U.S.A.





Galleries and Workshops of P. P. Caproni and Brother, Incorporated, Boston, Massachusetts

Foreword



FOR more than half a century Caproni Casts have been recognized by art lovers and critics as the most faithful reproductions of sculpture to be obtained in America. This is due to the constant effort to obtain the best models available and to maintain the highest standard of workmanship and finish in their reproduction. Models of the most important masterpieces of sculpture have been made directly from originals now in the principal Museums of Europe. It has also been possible to make many models directly from the clay originals of modern sculptors.

The Caproni Galleries in Boston are open to the public and thousands of true copies of Ancient, Renaissance, and Modern statues and reliefs may be seen there.

Each Caproni Cast has a small metal plate, inconspicuously inserted, which guarantees it as genuine, and of the highest possible workmanship.

Plaster casts are finished in plain white or ivory, new or antique bronze color. The ivory finish is a rich cream tint of a lighter shade in the high parts and a trifle darker in the deep parts, thus making a pleasing contrast and bringing out the details of the modeling. It makes the surface of the cast hard and waterproof, so that it can be cleansed when soiled. The new and antique bronze colors represent the metal before and after it has been exposed to the elements. The charge for bronze color adds approximately 25% to list price. There is no additional charge for the Ivory Finish.

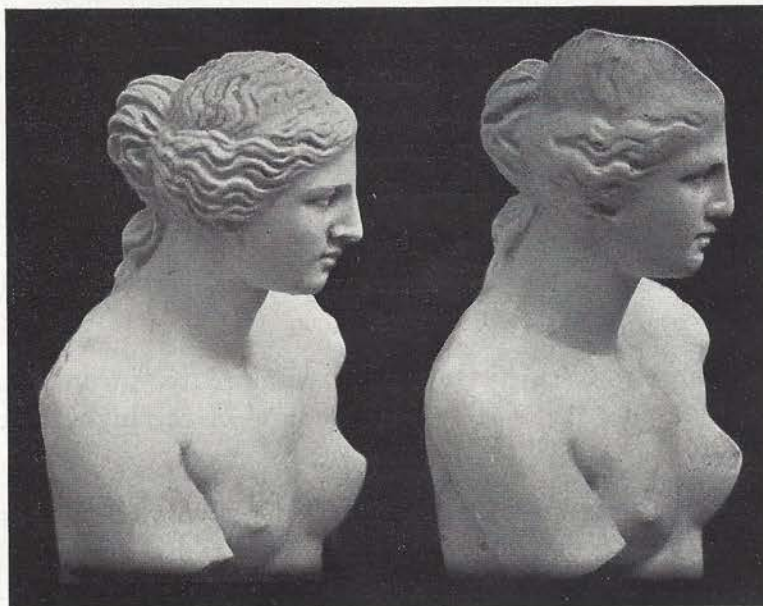
Practically all the subjects in the Caproni Collection can be furnished in real bronze, cast stone, or marble. Prices will be sent on request.

We welcome all requests for information regarding sculpture.

This catalogue is a valuable art book for your library.

It should be carefully preserved for future reference.

*The excellence of Caproni casting is clearly
shown by this Comparison*



A Caproni Cast

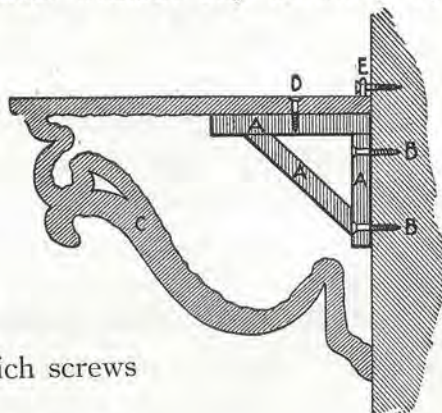
Not a Caproni Cast

Note the beautiful modelling of the head and bust of the Caproni cast; the clear outline of the features, and the details of the hair. This reproduction was cast from a model made directly from the original, in the Louvre.

METHOD OF ATTACHING BRACKETS AND RELIEFS TO WALLS

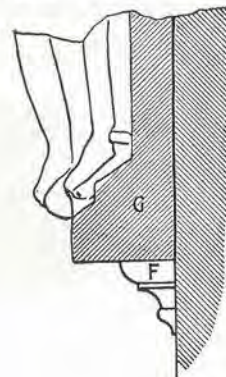
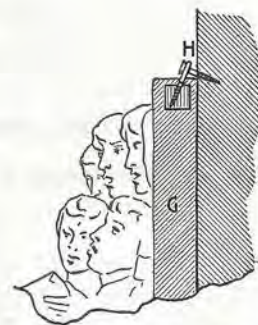
ALL of our plaster brackets are furnished with a wooden support, which simplifies the method of attaching them to the wall, thus making them firm and secure. Any carpenter should be able to attach brackets without any difficulty by following the instructions given below.

- A. Wooden support, which is first fastened to the wall.
- B. Screws, used for attaching wooden support to wall.
- C. Section view of plaster bracket in position over wooden support.
- D. Screw holding the bracket and wooden support together.
- E. Position of hooks at top of bracket, through which screws are placed.



All large plaster reliefs made by us are cast on a wooden frame which surrounds the edges of the reliefs, and the plaster is reinforced at the back with layers of burlap and fibre imbedded in the plaster, thus making the reliefs strong and durable and as light as an ordinary framed picture with glass. We do not recommend hanging large reliefs by wires. A large relief should rest upon a wooden moulding, and it should be fastened close to the wall by means of screws through the rings with which the top of every relief is provided. See illustration and instructions below.

- F. Wooden moulding supporting relief. The moulding can either be nailed or screwed to the wall before placing the relief upon it.
- G. Section view of relief.
- H. Method of fastening the relief to wall by means of a screw-eye put down at an angle through the plaster into the wooden frame, which is inside of every large relief. Put an ordinary screw through the eye into the wall.



Method of Cleansing Plaster Casts

To cleanse our ivory finished casts, first wet the piece with lukewarm water; then dip a wet sponge or bristle brush in dry "Pearline" or a similar washing powder, without grit, and rub the cast all over quickly. After this rinse the piece with fresh water, not allowing the "Pearline" to remain on it longer than is necessary.

This process should be used only on casts which have been treated with the Ivory Finish, or some other preparation which fills the pores of the plaster and renders the surface hard and smooth. Soiled casts which have no hardening finish can be cleansed only by a person experienced in this line of work.

*Retain this Catalogue, as we do not issue a new one annually.
A discount is allowed to Schools and other Educational Institutions.*

INSTRUCTIONS FOR ORDERING

1. Write name and address plainly, thus avoiding errors and delay.
2. Give catalogue numbers, titles, sizes, material wanted and state whether plaster casts are desired in the plain white, bronze or the ivory finish. Plaster Casts listed in this catalogue are sent in the ivory finish (for which there is no extra charge), if finish is not specified. The charge for bronze color adds approximately 25% to the list price. Do not cut catalogue, as illustrations are not necessary when ordering, — numbers, titles, material and sizes being sufficient.
Sizes. We do not guarantee measurements to be exact, as practically all small fractions of inches are omitted. If the *exact* measurement of a certain subject is required, we shall be glad to furnish same upon application.
3. List Prices are for goods f. o. b. Boston; that is, we do not pay transportation charges. Specify whether shipment is desired by freight or express. If carrier is not designated, it is understood that goods will be shipped by freight or express as we deem best. We send no goods by Parcel Post.
4. *Order in ample time so that heavy shipments destined for long distances may be forwarded by freight, thus costing the purchaser much less for transportation.*
5. Orders from pupils must be accompanied by cash or a guarantee of payment by the principal of the school or superintendent of schools.
6. We accept no C. O. D. orders amounting to less than \$5.00, and all C. O. D. orders must be accompanied by a remittance equal to 50% of catalogue prices.
7. We furnish class plates of polished brass with letters stamped and filled with black enamel, as



PRESENTED BY CLASS OF 1928

PLATE A Actual size 1 in. x 4½ in.



CLASS OF 1928

PLATE B Actual size ¾ in. x 3½ in.

In executing orders for real Bronze — Marble — or Cast Stone, details must be arranged by correspondence.

We also furnish brass plates of special sizes and with special inscriptions. Prices upon application, stating size and inscription desired.

EGYPTIAN SCULPTURE



Lioness Wounded
In the British Museum
No. 1 27 x 34 in.



King and Queen banqueting in Garden
In the British Museum
No. 3 23 x 55 in.



Lion Hunt in Chariot
In the British Museum
No. 2 37 x 55 in.



Royal Party hunting Lions. In the British Museum.
No. 4 24 x 85½ in.



Royal Party hunting Lions
Continuation of Frieze No. 4
No. 4A 24 x 59 in.



Lion Weight.
In the British Museum
No. 6 Height 12 in.; base 17 in.



Lion Weight
In the British Museum
No. 7 Height 3 in.; base 4 in.



King offering Libation after Lion Hunt. In the British Museum. No. 5 23 x 106 in.

Nos. 8-17 inclusive are from the palace of Ashur-nazir-pal, in the ruins of Nimrud (Nineveh), the Biblical Calah.



King hunting Wild Bulls. In the British Museum.
No. 8 37 x 89 in.



King hunting Lions. In the British Museum.
No. 9 37 x 89 in.

ASSYRIAN SCULPTURE



King offering Libation after Lion Hunt
In the British Museum
No. 10 37 x 89 in.



King Ashur-nazir-pal going into Battle
Continuation of Frieze No. 11
No. 12 37 x 85 in.



Royal Chariot. In the British Museum
No. 14 37 x 85 in.



King taking a City In the British Museum
No. 16 37 x 86 in.



King Ashur-nazir-pal going into Battle
In the British Museum
No. 11 37 x 85 in.



King Ashur-nazir-pal returning from Battle
In the British Museum.
No. 13 37 x 86 in.



King attacking a City. In the British Museum
No. 15 37 x 85 in.



King receiving an Enemy suing for Peace
In the British Museum
No. 17 37 x 85 in.



No. 18



No. 19



No. 20



No. 21

- Nos.
18 Archer marching to right 79 x 27 in.
19 Archer marching to left 79 x 27 in.
20 Archer marching to right 79 x 27 in.
21 Archer marching to left 79 x 27 in.
Nos. 18, 19, 20, 21 in the Louvre.

EGYPTIAN SCULPTURE



No. 201 No. 209 No. 211



No. 202 No. 203 No. 204 No. 205 No. 206 No. 207 No. 208



No. 210



No. 212 No. 213



No. 215



No. 217



No. 214



No. 216



No. 218

No.		Height
201	King Psammetichus. In the Louvre	2 ft. 1 in.
202	Idol. In the Louvre	11 in.
203	Idol. In the Louvre	6½ in.
204	Isis and Infant Horus. In the Louvre	10 in.
205	Idol. In the Louvre	7½ in.
206	Mummy. In the Louvre	7½ in.
207	Mummy. In the Louvre	7 in.
208	Isis and Infant Horus. In the Louvre	7½ in.
209	Goddess Sekhet. In the Louvre	2 ft. 2 in.

No.		Height
210	Head of Man	7 in.
211	Head of Sphinx. In the British Museum	1 ft. 10 in.
212	Head of Sphinx. In the Berlin Museum	5 in.
213	Head of Sphinx. In the Louvre	6 in.
214	Sphinx. In the Berlin Museum. Base 17 x 50 in.	2 ft. 3 in.
215	Cat. In the Berlin Museum	6½ in.
216	Pharaoh. In the Louvre	2 ft. 9 in.
217	Cross-legged Scribe	6½ in.
218	Sphinx. In the Louvre Base 10¼ x 35 in.	2 ft. 1 in.

GREEK AND ROMAN STATUES



Faun. By Praxiteles
In the Capitoline Museum, Rome

No. 500 Height 5 ft. 9 in.
766 Height 2 ft. 5 in.



Venos of Melos
In the Louvre

No. 501	Height 6 ft. 11 in.	No. 771	Height 1 ft. 6 in.
767	Height 3 ft. 8 in.	772	Height 1 ft. 0 in.
768	Height 3 ft. 4 in.	773	Height 8 in.
769	Height 2 ft. 10 in.	774	Height 7 in.
770	Height 2 ft. 2 in.	775	Height 5½ in.



Niobe and Child
In the Uffizi Gallery, Florence

No. 502 Height 7 ft. 6 in.
837 Height 2 ft. 6 in.

Wooden pedestals are necessary for large statues. See note on page 66



Diana of Versailles
In the Louvre

No. 503 Height 7 ft. 0 in.
776A Height 4 ft. 1 in.
776 Height 2 ft. 10 in.



No. 776A on Pedestal No. 6666
No. 776 on Pedestal No. 6667

No. 776A Height 4 ft. 1 in.
6666 Height 2 ft. 10½ in.
776 Height 2 ft. 10 in.
6667 Height 3 ft. 2 in.



Apollo Belvedere
In the Vatican

No. 504 Height 7 ft. 5 in.
777 Height 3 ft. 0 in.
778 Height 1 ft. 2 in.

GREEK AND ROMAN STATUES



Venus Genetrix
after Arcesilaus
No. In the Louvre
505 Height 5 ft. 9 in.
824 Height 2 ft. 10 in.
814 Height 2 ft. 4 in.



Discobolos Standing
No. In the Vatican
506 Height 5 ft. 10 in.
780 Height 3 ft. 8 in.
780A Height 2 ft. 4 in.



Minerva Giustiniani
No. In the Vatican
507 Height 7 ft. 5 in.
840 Height 6 ft. 1 in.
781 Height 3 ft. 5 in.
782 Height 2 ft. 9 in.
(See also No. 783 on Page 22)

See instructions for ordering on
Page 6



Pudicitia
No. In the Vatican
508 Height 6 ft. 10 in.
817 Height 3 ft. 9 in.
784 Height 1 ft. 2 in.



Antinous
In the Capitoline Museum, Rome
No. 509 Height 6 ft. 4 in.
No. 826 Height 4 ft. 2 in.
No. 761 Height 2 ft. 0 in.
(round base)



Hermes. By Praxiteles
In the Museum at Olympia
No. 510 Height 7 ft. 8 in.
No. 785 Height 2 ft. 6 in.
(Legs restored)
(See No. 785 on Page 22)



Discobolos. After Myron
In the Vatican
No. 511 Height 5 ft. 6 in.

GREEK AND ROMAN STATUES



Discobolos. After Myron
In the British Museum
No. 512 Height 5 ft. 6 in.



Eros, or Cupid,
In the Vatican
No. 513 Height 3 ft. 4 in.
787 Height 1 ft. 6 in.



Apoxyomenos, or Athlete with
Strigil. In the Vatican
No. 515 Height 6 ft. 8 in.
789 Height 3 ft. 6 in.



Achilles Borghese
In the Louvre
No. 514 Height 7 ft. 2 in.
788 Height 3 ft. 8 in.



Boy and Goose. By Boethus of
Chalcedon.
In the Vatican
No. 516 Height 3 ft. 2 in.
(See also No. 802 on Page 22)



Gladiator, Fighting (called the Borghese Warrior).
In the Louvre
No. 517 Height 5 ft. 4 in.
790 Height 2 ft. 9 in.
791 Height 2 ft. 3 in.
792 Height 1 ft. 10 in.
793 Height 10 in.

GREEK AND ROMAN STATUES



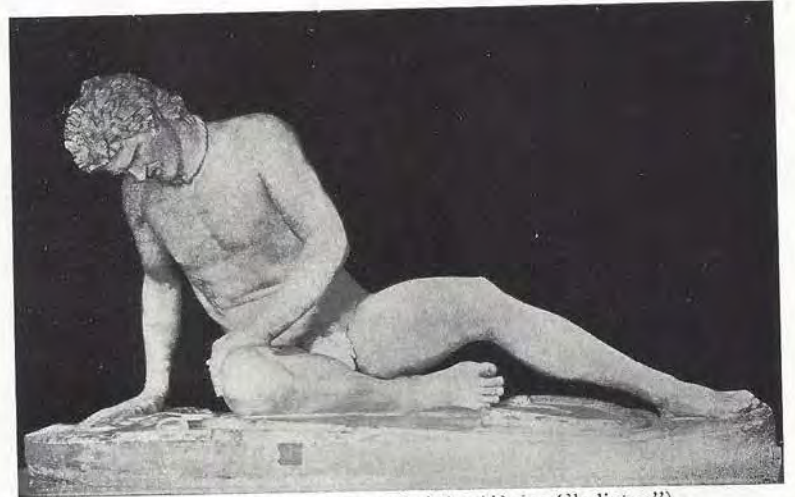
Psyche of Naples
In the Museum at Naples

No.	Height
518	3 ft. 2 in.
794	1 ft. 6 in.
794A	1 ft. 2 in.
795	10 in.



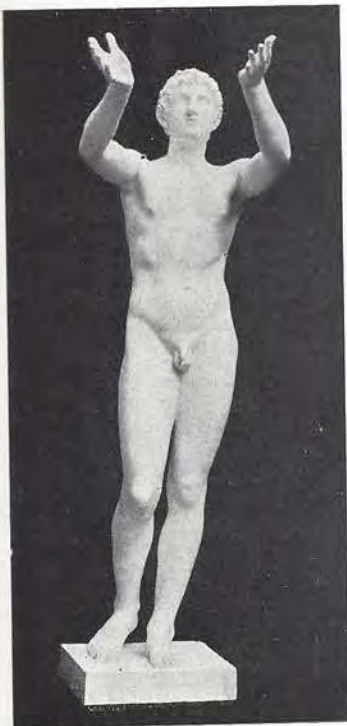
Diana Robing, from Gabii
In the Louvre

No.	Height
519	5 ft. 9 in.
813	3 ft. 3 in.
796	2 ft. 2 in.
797	1 ft. 4 in.



Dying Gaul (sometimes called the "Dying Gladiator")
In the Capitoline Museum, Rome

No.	Height	Base
520	3 ft. 6 in.	66 x 30 in.
798	1 ft. 3 in.	24 x 12 in.
799	1 ft.	20 x 10 in.
800	8 in.	13 x 5 in.



Suppliant Youth
(called "The Praying Boy")
In the Berlin Museum

No.	Height
522	4 ft. 6 in.
801	1 ft. 9 in.



Sophocles
In the Lateran Museum, Rome

No.	Height
524	7 ft.
779	2 ft. 10 in.
829	2 ft.



Demosthenes
In the Vatican

No.	Height
525	7 ft.
816	2 ft. 11 in.
830	2 ft.



Bacchante Dancing
In the Berlin Museum
No. 526 Height 4 ft. 1 in.
Can be furnished also without left foot restored

GREEK AND ROMAN STATUES



Niké (or Victory) of Samothrace
In the Louvre

No.	Height	
529	9 ft.	6 in.
841	6 ft.	4 in.
833	5 ft.	3 in.
752	3 ft.	0 in.
845	2 ft.	6 in.
753	1 ft.	7 in.
753A	1 ft.	3½ in.
753C	Height	7 in.



No. 752 Niké of Samothrace on
Bracket No. 752A

No. 752A Bracket, representing
Prow of Vessel, is suggestive of the
original pedestal in the Louvre.
In ordering No. 752A Bracket, state
whether desired for a corner or for a
flat wall.

No.	Height
752	3 ft. 0 in.
752A	Prow- for corner or flat wall.



Niké of Samothrace
No. 752 on Pedestal

No. 752 on Pedestal No. 752B
No. 753A on Pedestal No. 753B Ped-
estal is made in two sizes, reductions
of the original pedestal in exact pro-
portions for Nos. 752 and 753A.

No.	Height
752	3 ft. 0 in.
752B	5 ft. 6 in.
753A	1 ft. 3½ in.
753B	1 ft. 2½ in.



Wrestlers
In the Uffizi Gallery Florence

No.	Height	Base
530	3 ft. 4 in.	25½ x 48 in.
756	1 ft. 6 in.	9 x 20 in.
757	8 in.	7 x 10 in.



Boy extracting Thorn
(Sometimes called "Spinario")
In the Palazzo dei Conservatori,
Rome

No.	Height
531	2 ft. 9 in.
804	1 ft. 2 in.
804A	6 in.

GREEK AND ROMAN STATUES



Thalia. Muse of Comedy
In the Vatican
No. 532 Height 5 ft. 4½ in.



Clio. Muse of History
In the Vatican
No. 533 Height 4 ft. 7 in.



Apollo Citharoedus. After Scopas
In the Vatican
No. 534 Height 6 ft. 6 in.



Niobid (from the Niobe Group)
In the Vatican
No. 535 Height 5 ft. 7 in.



Polyhymnia. In the Louvre.
No.
536 Height 6 ft. 3 in.
750 Height 2 ft. 6 in.
751 Height 10½ in.



Euripides. In the Vatican
No. 537 Height 7 ft. 7 in.

GREEK AND ROMAN STATUES



Venus de Medici
In the Uffizi Gallery, Florence

No.	
551	Height 5 ft. 3 in.
809	Height 3 ft. 0 in.
810	Height 2 ft. 0 in.
811	Height 1 ft. 4 in.



Ariadne, Sleeping. In the Vatican
No. 539 Height 3 ft. 10 in. Base 7 ft. 4 in. x 2 ft. 9 in.
(See No. 755 on Page 22.)



Doryphoros. After Polyclitus
In the Naples Museum

No.	
540	Height 7 ft. 0 in.
825	Height 4 ft. 2 in.



Hercules
In the Lansdowne House, London
No. 543 Height 7 ft. 0 in.



Augustus Cæsar
In the Vatican

No.	
544	Height 7 ft. 4 in.
847	Height 3 ft. 9 in.
815	Height 1 ft. 2 in.



Amazon
In the Berlin Museum
No. 538 Height 7 ft. 0 in.

GREEK AND ROMAN STATUES



Hermes, from Andros
In the National Museum, Athens
No. 552 Height 7 ft. 0 in.



Æschines
In the Naples Museum
No. 553 Height 7 ft. 0 in.
843 Height 5 ft. 6 in.
805 Height 2 ft. 10 in.



Lemnian Athena
Attributed to Phidias.
Head in Museo Civico, Bologna ;
torso in Royal Museum, Dresden
No. 557 Height 6 ft. 9 in.



Idolino (so called)
In the Archeologico, Florence
No. 554 Height 5 ft. 2 in.
No. 842 Height 2 ft. 8 in.



Faun playing on Flute
In the Louvre
No. 555 Height 4 ft. 6 in.
No. 765 Height 1 ft. 11 in.



Mnemosyne. Goddess of Memory
and Mother of the Muses
By Lysippus. In Royal Museum,
Dresden
No. 558 Height 7 ft. 0 in.



Anacreon, Seated
In the Villa Borghese, Rome
No. 559 Height 5 ft. 8 in.



Niobid. In the Louvre
One of the figures from the Niobe group
No. 556 Height 3 ft. 4 in.

GREEK AND ROMAN STATUES



Germanicos
In the Louvre

No.	Height	6 ft.	3 in.
560	Height	3 ft.	3 in.
812	Height	2 ft.	7 in.
806	Height		



Faun (or Satyr) Dancing
In the Villa Borghese, Rome

No.	Height	7 ft.	2 in.
561	Height		



Danaid
In the Vatican

No.	Height	5 ft.	2 in.
562	Height	1 ft.	5½ in.
759	Height	1 ft.	
759A	Height	1 ft.	

See Page 6 for instructions for ordering.
Follow them and avoid errors.

Large statues require wooden pedestals.
Refer to note on Page 66



Amazon
In the Capitoline Museum, Rome

No.	Height	7 ft.	0 in.
563	Height	2 ft.	6 in.
803	Height		



Wolf of the Capitol (Romulus and Remus)
In the Palazzo dei Conservatori, Rome

No.	Height	3 ft.
564	Height	



Muse playing on Lyre
In the Louvre

No.	Height	6 ft.	10 in.
565	Height		

GREEK AND ROMAN STATUES



Euterpe
In the Vatican

No. 566 Height 4 ft. 9 in.
821 Height 1 ft. 5 in.
850 Height 0 ft. 11 in.



Athena Parthenos
In the National Museum, Athens
(Known as the Varvakeion statuette)

No. 567 Height 3 ft. 6 in.



Juno, from Samos
In the Louvre
No. 568 Height 6 ft. 3 in.



Charioteer of Delphi
At Delphi
No. 569 Height 6 ft. 8 in.



Anacreon, Standing
In the Jacobsen collection, Copenhagen
No. 570 Height 6 ft. 9 in.



Faun and Infant Bacchus
In the Naples Museum
No. 571 Height 6 ft. 3 in.



Mercury, Resting
In the Naples Museum
No. 577 Height 3 ft. 11 in.
832 Height 1 ft. 9 in.
758 Height 1 ft. 0 in.

GREEK AND ROMAN STATUES



Caryatid, from the Erectheum,
Athens
In the British Museum
No. 572, Height 7 ft. 10 in.



Venus of Capua
In the Naples Museum
No. 573 Height 7 ft. 3 in.



Venus of Arles
In the Louvre
No.
574 Height 6 ft. 9 in.
822 Height 2 ft. 9 in.



Terminal Pan
In the British Museum
No.
575 Height 3 ft. 4 in.

Statuettes may be supported by plaster pedestals or brackets.
See Pages 65 to 69 inclusive



Augustus Cæsar
In the Louvre
No.
576 Height 7 ft. 4 in.



Augustus, in Youth
In the Louvre
No.
579 Height 4 ft. 7 in.

Claudius, in Youth
In the Louvre
No.
578 Height 4 ft. 5 in.



Silenus and Infant Bacchus
In the Louvre
No.
580 Height 6 ft. 7 in.
808 Height 2 ft. 8 in.

GREEK AND ROMAN STATUES



Venus at the Bath, or Crouching Venus
In the Vatican
No. 581 Height 2 ft. 6 in.
(See also No. 844 on Page 23)



Urania, Muse of Astronomy
In the Louvre
No. 582 Height 6 ft. 10 in.



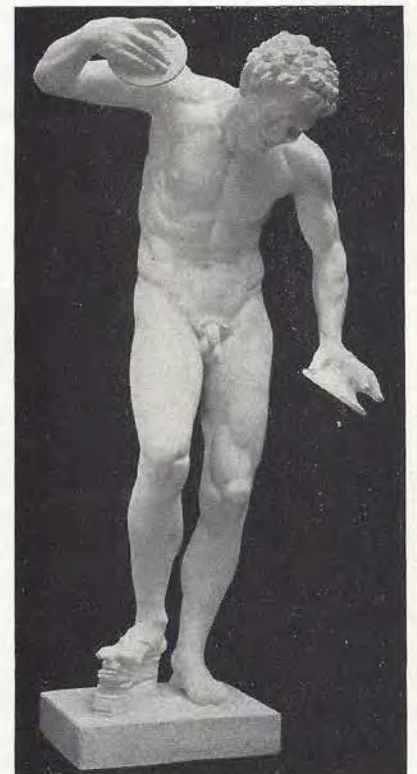
Mars, Ludovisi
In the National Museum, Rome
No. 583 Height 5 ft. 3 in.



Esquiline Venus
In the Capitoline Museum, Rome
No. 584 Height 5 ft. 2 in.



Clio, Muse of History
In the Berlin Museum
No. 585 Height 5 ft. 0 in.



Faun playing Scabellum
In the Uffizi Gallery, Florence
No. 586 Height 5 ft. 11 in.
(See also Nos. 762, 763 on Page 22)

REDUCTIONS OF GREEK AND ROMAN STATUES



Hercules, Farnese
No. 754
Height 2 ft. 6 in.



Ariadne, Sleeping
After the statue in the Vatican
No. 755 Height 1 ft. 5 in.
base, 24 x 10 in.
(See No. 539 on Page 16)



Antinous
In the Naples Museum
No. 760 Height 1 ft. 3½ in.



Faun playing Scabellum
After the statue in the Uffizi
Gallery, Florence
No. 762 Height 1 ft. 11 in.
No. 763 Height 1 ft. 1 in.
(See No. 586 on Page 21)



Minerva Giustiniani
No. 783 Height 10½ in.
(See No. 507 on Page 11)



Hermes (legs restored)
No. 785 Height 2 ft. 6 in.
(See No. 510 on Page 11)



Discobolos of Myron
Reduction of the statue in
the Lancellotti Palace, Rome
No. 786 Height 1 ft. 5 in.



Boy and Goose
In the Louvre
No. 802 Height 1 ft. 2 in.
(See No. 516 on Page 12)



Urania
In the Museo Pio
Clement, Rome
No. 819
Height 1 ft. 1 in.

Apollo, with Lyre
No. 820
Height 11 in.



Venus of Ostia
No. 818
Height 3 ft. 9 in.



Ceres
In the Vatican
No. 823
Height 3 ft. 7 in.



Jason
In the Louvre
No. 827 Height 2 ft. 9 in.
No. 807 Height 2 ft. 4 in.



Zeus
In the Louvre
No. 828 Height 3 ft. 3 in.



Apollo playing on Lyre
In the Berlin Museum
No. 831 Height 2 ft. 9 in.

REDUCTIONS OF GREEK AND ROMAN STATUES



Hector and Andromache
In the Berlin Museum
No. 834 Height 3 ft. 2 in.



Satyr and Infant Satyr and Infant
In Rome
No. 835 Height 3 ft. 0 in. No. 836 Height 3 ft. 0 in.



Zeus Juno Barberini
In the Vatican
No. 838 Height 2 ft. 7 in. No. 839 Height 2 ft. 7 in.



Venus at Bath
No. 844 Height 1 ft. 7½ in.
(See No. 581 on Page 21)



Discobolos
In the National Museum, Rome
No. 846 Height 2 ft. ½ in.



Urania
No. 848 Height 2 ft. 6 in.



Venus
In the Capitoline Museum,
No. Rome
849 Height 3 ft. 4 in.

STATUETTES OF DIFFERENT PERIODS



No. 1500



No. 1509



No. 1510



Nos. 1516A, 1516B, 1516



No. 1517

No.	Description	Location	Height
1500	Hermes.	In the Louvre	2 ft. 8 in.
1509	Faun, dancing with Scabellum.	In the Louvre	10 in.
1510	Satyr, from Pergamon.	In the Berlin Museum	8½ in.

No.	Description	Location	Height
1516A	Spartacus		2 ft.
1516B	Spartacus		1 ft. 4½ in.
1516	Spartacus		1 ft. 2 in.
1517	Diver.	In Arolsen	6½ in.

STATUETTES OF DIFFERENT PERIODS



No. 1519 No. 1520 No. 1521



No. 1523 No. 1524 No. 1525 No. 1526 No. 1527 No. 1528



No. 1530



No. 1529 No. 1533 No. 1534 No. 1535



No. 1536



No. 1537



No. 1539



No. 1540



No. 1541



No. 1542



No. 1543



No. 1544



No. 1545

No.	Height
1519 Gladiator, standing	11 in.
1520 Boar Hunter	1 ft. 8 in.
1521 Gladiator, with Helmet	8 in.
1523 Kephalos (so called). In the National Museum, Athens	8 in.
1524 Tanagra Figurine. In the National Museum, Athens	9 in.
1525 Tanagra Figurine. In the National Museum, Athens	8½ in.
1526 Tanagra Figurine. In the National Museum, Athens	8½ in.
1527 Tanagra Figurine. In the National Museum, Athens	8½ in.
1528 Tanagra Figurine. In the National Museum, Athens	9 in.
1529 Tanagra Figurine. In the National Museum, Athens	9 in.
1530 Caryatid. In the National Museum, Athens	1 ft. 10 in.

No.	Height
1533 Roman Jester. By Barye. In the Museum of Fine Arts, Brooklyn	7½ in.
1534 Tanagra Figurine. In the National Museum, Athens	7½ in.
1535 Tanagra Figurine. In the National Museum, Athens	10 in.
1536 Venus, made to hang (modern)	1 ft. 2 in.
1537 Venus. In the Berlin Museum	11½ in.
1539 Venus. In the Berlin Museum	1 ft. 2 in.
1540 Athena. In the Museum of Fine Arts, Boston	6½ in.
1541 Venus, with Doves (modern)	1 ft. 10 in.
1542 Tanagra Figurine	10 in.
1543 Tanagra Figurine	8 in.
1544 Hercules, Tyrian, bearing away the Apples of Hesperides. In the British Museum	2 ft. 8 in.
1545 Antinous. In the Villa Albani, Rome	1 ft. 3 in.

The Tanagra Figurines were found in excavating the City of Tanagra, from which they derive the name. The originals are of Terra Cotta.

STATUETTES OF DIFFERENT PERIODS



No. 1546 No. 1547 No. 1548 No. 1549 No. 1550



No. 1551 No. 1552 No. 1553 No. 1554



No. 1555 No. 1556 No. 1557 No. 1558



No. 1559 No. 1560 No. 1561



No. 1562



No. 1563



No. 1564



No. 1565



No. 1566



No. 1567



No. 1568



No. 1569 No. 1570 No. 1571

No.		Height
1569	Tanagra Figurine	10 in.
1570	Tanagra Figurine	1 ft.
1571	Tanagra Figurine	11½ in.

No.		Height
1546	Tanagra Figurine, with Wreath	11 in.
1547	Tanagra Figurine, with Flowers	11 in.
1548	Tanagra Figurine, with Vase	11 in.
1549	Tanagra Figurine, with Fan	11 in.
1550	Tanagra Figurine, with Vase	10 in.
1551	Tanagra Figurine, with Vase	10 in.
1552	Tanagra Figurine, with Fan	10 in.
1553	Tanagra Figurine, dancing	8 in.
1554	Tanagra Figurine, with Fan	7½ in.
1555	Tanagra Figurine, with Masque	7½ in.
1556	Tanagra Figurine, with Book	8 in.
1557	Tanagra Figurine, seated	8 in.
1558	Tanagra Figurine, resting on Pedestal	7½ in.
1559	Tanagra Figurine, seated	5½ in.
1560	Tanagra Figurine, seated, with Masque	6 in.
1561	Tanagra Figurine, seated	5½ in.
1562	Minerva of Turin. In the Museo di Antichità, Turin	2 ft. 4 in.
1563	Tanagra Figurine, carrying Vase	9½ in.
1564	Tanagra Figurine, carrying Vase	1 ft.
1565	Female Figure, dancing (modern)	1 ft.
1566	Female Figurine, seated	9½ in.
1567	Tanagra Figurine, arranging garments	11 in.
1568	Crocus. By John Borgeson	1 ft.

HERCULANEAN STATUETTES



No. 2000

No. 2001



No. 2002

No. 2003



No. 2004



No. 2005

No.	Description	Height
2000	Runner (reduction). In the National Museum, Naples	11 in.
2001	Runner (reduction). In the National Museum, Naples	11 in.
2002	Boy carrying Vase (original size). In the National Museum, Naples	1 ft. 6 in.
2003	Boy carrying Dolphin (original size). In the Nat. Museum, Naples	1 ft. 6 in.
2004	Faun, dancing (original size). In the National Museum, Naples	1 ft. 1 in.
2005	Faun, dancing (original size). In the National Museum, Naples	9½ in.

POMPEIIAN STATUETTES

Originals in the National Museum, Naples



Victory

No.	Height
2200	2 ft. 0 in.
2201	1 ft. 5 in.



Satyr, dancing

No.	Height
2202	2 ft. 9 in.
2211	1 ft. 5 in.
2203	1 ft. 1 in.



Silenus carrying a Crown

No.	Height
2210	2 ft.



Satyr, holding Torch

No.	Height
2209	9½ in.



Narcissus

No.	Height
2205	2 ft. 2 in.
2206	1 ft. 2½ in.
2207	0 ft. 5½ in.



Young Man carrying Vase
No. 2204 Height 6 in.



Satyr, with Wine Bag (Reduction)
No. 2208 Height 9 in.



Venus
No. 2212 Height 1 ft.

Order according to directions on Page 6

RENAISSANCE AND MODERN STATUES



Slave. By Michelangelo
In the Louvre

No.
2500 Height 8 ft. 0 in.
2809 Height 3 ft. 9 in.
2809A Height 1 ft. 6½ in.



Mercury, Flying
By Giovanni da Bologna
In the National Museum, Florence

No.
*2501 Height 6 ft. 1 in.
2845 Height 3 ft. 7¼ in.
2846 Height 3 ft. 0 in.
2847 Height 2 ft. 4 in.
2848 Height 1 ft. 8½ in.

* Pedestal No. 6681 on page 66 is suitable for this statue.



St. George. By Donatello
In the Bargello, Florence

No.
2502 Height 7 ft. 0 in.
2914 Height 3 ft. 8 in.
2850 Height 2 ft. 7 in.



Madonna, Praying
By Veit Stross
(Known as the Wooden Madonna of Nuremberg)
In the Germanic Museum, Nuremberg

No.
2503 Height 5 ft. 2 in.
*2814 Height 1 ft. 5 in.
*2814A Height 0 ft. 10½ in.
*2815 Height 0 ft. 5 in.
*With round base



Cherub, with Shield
By Desiderio da Settignano
In the Church of Santa Croce
Florence

No. 2505 Height 3 ft. 4 in.



Cherub, with Shield
By Desiderio da Settignano
In the Church of Santa Croce
Florence

No. 2506 Height 3 ft. 4 in.



Cupid, kneeling
By Michelangelo
In the South Kensington Museum
London

No. 2507 Height 3 ft. 2 in.



David. By Verrocchio
In the National Museum, Florence

No. 2508 Height 4 ft. 2 in.

RENAISSANCE AND MODERN STATUES



Perseus
By Cellini
In the National
Museum, Florence
No. 2510
Height 2 ft. 8 in.



Cherub with Dolphin
By Verrocchio
From the Fountain of the Palazzo
Vecchio, Florence
No. 2511 Height 2 ft. 6 in.



Christ, Infant
By Desiderio da Settignano
In the Church of
San Lorenzo, Florence
No. 2512
Height 1 ft. 11 in.



Virgin and St. Elizabeth. By Andrea della Robbia
In the Church of S. Giovanni fuor Civitas, Pistoia
No. 2513 Height 5 ft.
(See No. 5199 on Page 53)



Joan of Arc. By Chapu
In the Louvre, Paris
No. Height
2515 3 ft. 10 in.
2897 1 ft. 6 in.
2898 9 in.



Singing Boys. Florentine
No. 2516 Height 3 ft.



Hebe. By Thorwaldsen
In the Thorwaldsen Museum, Copenhagen
No. Height
2517 5 ft. 3 in.
2853 3 ft. 3 in.
2854 2 ft. 1 in.
2841 1 ft. 2½ in.
2841A 1 ft.
2841B 6½ in.

RENAISSANCE AND MODERN STATUES



Washington. By Houdon
Original in the Capitol,
Richmond, Va.
No. 2514 Height 6 ft. 10 in.
No. 2887 Height 3 ft. 4 in.



Lincoln
No. 2514B Height 7 ft. 2 in.

The pose of body in Lincoln B and C is after that of statue of Lincoln by St. Gaudens, in Lincoln Park, Chicago. The heads are from Busts Nos. 5394 and 5395 by Max Bachmann.



Lincoln
No. 2514C Height 7 ft. 2 in.

Large statues require wooden pedestals. See note on Page 66



Roosevelt. By P. Bryant Baker
No. 2533 Height 6 ft. 10 in.



Lincoln
By Lorado Taft
Original in heroic size at Urbana, Ill.
No. 2534 Height 5 ft. 9 in.
(Figure Height 5 ft. 2 in.)

RENAISSANCE AND MODERN STATUES



David. By Donatello
In the National Museum, Florence
No. 2518 Height 5 ft. 2 in.



Bacchus and Infant Faun
By Jacopo Sansovino
In the National Museum, Florence
No. 2519 Height 4 ft. 9 in.



Horace Mann. By Emma Stebbins
In State House Park, Boston
No. 2520 Height 8 ft. 8 in.



St. John
By Benedetto da Maiano
In the National Museum, Florence
No. 2521 Height 4 ft. 8 in.



King Arthur
By Peter Vischer
In Innsbruck, Austria
No. 2522 Height 7 ft. 2 in.



Terminal Satyr
No. 2523 Height 6 ft. 7 in.



Cherub. By Verrocchio
No. 2524 Height 2 ft. 3 in.

Large statues require wooden pedestals, as noted on Page 66.
Statuettes may be supported by plaster pedestals or brackets.
(See Pages 65 to 69, inclusive.)

RENAISSANCE AND MODERN STATUES



Faun playing Flute
In the Villa Borghese, Rome
No. 2525 Height 5 ft.



Christ. By Thorwaldsen
in Copenhagen

No.	Height	5 ft.	6 in.
2526	Height	3 ft.	2 in.
2855	Height	1 ft.	8 in.
2855A	Height	0 ft.	9¼ in.
2855B	Height		



Hebe. By Canova
No. 2527 Height 5 ft. 6 in.



Giuliano de Medici
By Michelangelo
In the Medici Chapel, Florence



Lorenzo de Medici
By Michelangelo
In the Medici Chapel, Florence

Guiliano de Medici

No.	Height	6 ft.	0 in.
2528	Height	3 ft.	1 in.
2830	Height	1 ft.	9 in.
2829	Height	1 ft.	4 in.
2832	Height		

Lorenzo de Medici

No.	Height	6 ft.	0 in.
2529	Height	3 ft.	1 in.
2831	Height	1 ft.	9 in.
2829A	Height	1 ft.	4 in.
2833	Height		



The Three Graces. By Germain Pilon
From the Monument of Henry II
In the Louvre, Paris
Pedestal by Dominique Florentin
No. 2530A Height 9 ft. 9 in.
(See also No. 2945 on Page 43)



Daniel Webster. By Hiram Powers
In the State House Park, Boston
No. 2531 Height 8 ft.



Sabrina. By Marshall
No. 2532 Height 4 ft. 2 in.

STATUES BY CYRUS E. DALLIN, SCULPTOR

Exclusive rights of reproduction conferred by Cyrus E. Dallin upon P. P. Caproni and Brother



Copyright
No. 2872 Paul Revere
on Pedestal No. 2872A
No.
2872 Height 3 ft. 2 in.
2872A Height 3 ft. 6 in.



Copyright
John Hancock
No. 2885 Height 2 ft. 10 in.



Copyright
No. 2880 Medicine Man
on Pedestal No. 2872A
No. 2880 Medicine Man is a reduction of
statue in Fairmount Park, Philadelphia
No.
2880 Height 2 ft. 7 in.
2872A Height 3 ft. 6 in.

No. 2872A Pedestal is
suitable for statues Nos.
2872, 2880, 2904, 2908, 2913,
2915, 2916, 2917, 2918 and
2938



Copyright
The Scout
No. 2904 Height 3 ft. 2 in.
No. 2872A Pedestal illustrated with the statues
of Paul Revere and the Medicine Man, is also
suitable for The Scout



Copyright
Abraham Lincoln
No. 2912 Height 3 ft. 2 3/4 in.



Copyright
Cayuse at Spring
No. 2913 Height 3 ft. 3 in.
Pedestal suitable for this statue
is No. 2872A illustrated above

STATUES BY CYRUS E. DALLIN, SCULPTOR

Exclusive rights of reproduction conferred by Cyrus E. Dallin upon P. P. Caproni and Brother



The Appeal to the Great Spirit. Original, in bronze, in front of the Museum of Fine Arts, Boston.

Photograph by Leslie R. Jones

Chief Bald Eagle and Warriors viewing the Statue



Copyright

The Appeal to the Great Spirit
Reduction of the statue in front of the
Museum of Fine Arts, Boston
No. 2908 Height 3 ft. 4 in.
No. *2908A Height 2 ft. 4 in.
No. 2908B Height 1 ft. 9 in.
* Pedestal No. 6673, Page 66, is suitable



Copyright

No. 2908 The Appeal to the Great Spirit
On Pedestal No. 2908C
No. 2908 Height 3 ft. 4 in.
No. 2908C Height 3 ft. 7 3/4 in.
Pedestal after original pedestal in front
of Museum of Fine Arts, Boston
Or Pedestal No. 2872A. See Page 32.



Copyright

No. 2908B The Appeal to the Great Spirit
On Pedestal No. 2908D
No. 2908B Height 1 ft. 9 in.
No. 2908D Height 1 ft. 1/2 in.

STATUES BY CYRUS E. DALLIN, SCULPTOR

Exclusive rights of reproduction conferred by Cyrus E. Dallin upon P. P. Caproni and Brother



* On the Warpath, Sioux Tribe
No. 2916 Height 3 ft. 8 in.

Copyright



* Chief Antelope
No. 2918 Height 2 ft. 10 in.

Copyright



* Chief Washakie, Shoshone Tribe
No. 2915 Height 3 ft. 4 in.

Copyright



* Pretty Eagle, Crowe Tribe
No. 2917 Height 3 ft. 10 in.

Copyright



* Signal of Peace
No. 2938 Height 4 ft. 2 in.
to top of Spear
Height 2 ft. 10 in.
to top of Right Hand

Copyright

* Pedestal No. 2872A, illustrated on Page 32, is suitable

STATUES BY CYRUS E. DALLIN, SCULPTOR

Exclusive rights of reproduction conferred by Cyrus E. Dallin upon P. P. Caproni and Brother



Copyright

Standing Elk
Ute Tribe
No. 2919 Height 2 ft. 6 in.



Copyright

Chief Joseph
Nez Percé Tribe
No. 2920 Height 2 ft. 2 in.



Copyright

Sacajawea
No. 2923 Height 6 ft.
2924 Height 3 ft. 1 in.



Copyright

Rear View of Nos. 2923, 2924,
showing papoose

Avoid errors in ordering by following instructions on Page 6



Copyright

Massasoit
No. 2922 Height 3 ft. 4 in.



Copyright

Peace Pipe
No. 2925 Height 3 ft.



Copyright

Indian Archer
No. 2926 Height 3 ft.



Copyright

Massasoit
No. 2948 Height 3 ft.

STATUES BY CYRUS E. DALLIN, SCULPTOR

Exclusive rights of reproduction conferred by Cyrus E. Dallin upon P. P. Caproni and Brother



Copyright
Captured but not Conquered
No. 2931 Height 2 ft. 9 in.



Copyright
Victory of 1918
No. 2932 Height 4 ft. 9 in.



Copyright
"Mine Eyes have seen the Glory"
No. 2933 Height 3 ft.



Copyright
Alma Mater
Reduction of the statue in Mary Institute, St. Louis
No. 2934 Height 1 ft. 6½ in.



Copyright
Abraham Lincoln
No. 2935 Height 2 ft.



Copyright
Gov. William Bradford
No. 2937 Height 2 ft. 11 in.

RENAISSANCE AND MODERN STATUETTES AND REDUCTIONS



Boxer. By Canova
No. 2800 Height 4 ft. 0 in.
2801 Height 2 ft. 10 in.



Boxer. By Canova
No. 2802 Height 2 ft. 9 in.



Mercury, seated
By Pigalli
No. 2803 Height 2 ft.



Dante
No. 2804
Height 2 ft.



Cupid, dancing
By Fiamingo
No. 2805
Height 1 ft. 6 in.



David. By A. Mercie
No. 2806 Height 3 ft. 0 in.
2807 Height 2 ft. 4 in.



Satyr and Infant
Bacchus
By Perraud
In the Louvre
No. 2810
Height 1 ft. 10 in.



2811A

2811B
The Three Slaves. By Tacca
In Leghorn

2811C

No. 2811A Height 1 ft. 7 in.
2811B Height 1 ft. 7 in.
2811C Height 1 ft. 7 in.



River Nile. By Caffieri
In the Louvre
No. 2808 Height 2 ft.



No. 2812 No. 2813
Slave Slave
By Michelangelo
No. 2812 Height 9 in.
2813 Height 9 in.



Ariadne, on Panther
By Dennecker
In Frankfurt
No. 2816 Height 1 ft. 3 in.



Beethoven
By Landgrebe
No. 2817
Height 8½ in.

RENAISSANCE AND MODERN STATUETTES AND REDUCTIONS



Mercury, Slayer of Argus
By Thorwaldsen
No. 2818 Height 1 ft. 10 in.



2819A Singing Cherubs. 2819B Four in Set, Modern 2819C
No. 2819 Height 1 ft. 2 in.
Sold separately
No. 2819A Height 1 ft. 2 in.
2819B Height 1 ft. 2 in.
2819C Height 1 ft. 2 in.



Louise
Empress of Prussia
No. 2820 Height 9 1/2 in.



Napoleon Bonaparte
No. 2821 Height 1 ft. 1 in.



Night. By Michelangelo
From the Tomb of Giuliano de Medici, in Florence
No. 2822 Height 2 ft. Base 20 x 10 in.
2826 Height 1 ft. 2 in. Base 15 x 4 in.



Day. By Michelangelo
From the Tomb of Giuliano de Medici, in Florence
No. 2823 Height 2 ft. Base 20 x 10 in.
2827 Height 1 ft. 2 in. Base 15 x 4 in.



Moses
By Michelangelo
In S. Pietro in Vincoli, Rome
No. 2834 Height 3 ft. 1 in.
2834A Height 2 ft. 0 in.
2828 Height 1 ft. 7 in.



Morning. By Michelangelo
From the Tomb of Lorenzo de Medici, in Florence
No. 2824 Height 2 ft. Base 20 x 10 in.



Evening By Michelangelo
From the Tomb of Lorenzo de Medici, in Florence
No. 2825 Height 2 ft. Base 20 x 10 in.



St. Francis of Assisi
No. 2835 Height 2 ft. 11 in.
2836 Height 1 ft. 5 in.

RENAISSANCE AND MODERN STATUES AND REDUCTIONS



Young Athlete
By Hasselberg
No. 2838
Height 1 ft. 8½ in.



Caught
By F. Dingle
No. 2839
Height 1 ft.



Napoleon in Last Days
By V. Vela
In the Museum at Versailles
No. 2840
Height 11 in.



Colleoni, Bartolomeo
By Verrocchio
Reduction of statue in Venice
No. 2842
Height 2 ft. 2 in.



Milo of Crotona
By Edmè Dumont
In the Louvre
No. 2843
Height 2 ft. 7 in.



Cupid, or Vici, with Bow
By Aug. Moreau
No.
2844 Height 2 ft. 0 in.
2844A Height 1 ft. 0 in.
2844B Height 1 ft. 4½ in.



David. By Michelangelo
Reduction of colossal
Statue in Florence
No. 2849
Height 2 ft. 6 in.
(See also bust No. 5193.
on Page 53)



Venus with Apple
By Thorwaldsen
No. 2851
Height 3 ft.



Venus at Bath
By Ch. Allegrain
No.
2852 Height 3 ft. 0 in.
2852A Height 1 ft. 4 in.



No. 2856
Marguerite
No.
2856 Height 1 ft. 9 in.
2857 Height 1 ft. 9 in.



Dante
No. 2858
Height 2 ft. 10½ in.



Fisher Boy playing with Turtle
By Rude
In the Louvre
No. 2859
Height 1 ft. 1 in.



Cherub, to hang
By Fiamingo
No. 2860
Height 1 ft.



Cherub, to hang
By Fiamingo
No. 2861
Height 1 ft.



Michelangelo in Youth
No. 2862
Height 2 ft.

(See also Nos. 2869, 2870, 2899, 2900, 2901)

RENAISSANCE AND MODERN STATUETTES AND REDUCTIONS



Cupid and Psyche. By Canova
In Villa Carlotta, Cadenabbia
No. 2863 Height 1 ft. 11 in.;
base 24 x 11 in.
2837 Height 1 ft. 4 in.;
base 17½ x 8 in.



Daniel Webster
By Thomas Ball
Original sketch for the statue
in Central Park, New York
No. 2864
Height 2 ft. 6 in.



Gov. John A. Andrew
By Martin Milmore
Original sketch for the statue
in the State House, Boston
No. 2865
Height 2 ft. 1½ in.



Benjamin Franklin
By R. S. Greenough
Original sketch for the statue
in front of City Hall,
Boston
No. 2866
Height 2 ft. 1 in.



Wagner
By Landgrebe
No. 2867
Height 8½ in.



Goethe
By Schapfer
No. 2868 Height 3 ft.



2869 2870
Cherubs, flying, made to hang
No. 2869 Height 8 in.
2870 Height 7 in.
(See also Nos. 2860, 2861, 2899, 2900, 2901)



Mephistopheles
By Giovanni da Bologna
No. 2871 Height 2 ft. 7 in.



Victory. By Rauch
No. 2873
Height 3 ft. 9 in.



Copyright
Meditation
By Pietro Ghiloni
No. 2874 Height 2 ft. 2 in.
2875 Height 1 ft. 6 in.
2876 Height 1 ft. 4 in.
2877 Height 1 ft. 0 in.
2877A Height 8 in.



Atlas
No. 2878
Height 4 ft. 0 in.



Copyright
American Indian
No. 2881
Height 4 ft. 4 in.



John Harvard
No. 2882
Height 1 ft. 3 in.;
base 7½ x 5 in.



Venus at the Bath
By Falconet
In the Louvre
No. 2883
Height 2 ft. 9 in.

RENAISSANCE AND MODERN STATUETTES AND REDUCTIONS



Phryne before the Judges
By Jerome
No. 2884
Height 1 ft. 1 in



Fiume
By Michelangelo
No. 2886
Height 1 ft. 11 in.



The Kiss. By Rodin
Reduction of statue in the
Rodin Museum, Paris
No. 2889
Height 10½ in.



St. John. By Damp
No. 2894
Height 9 in.



Cupid, Mending Heart
12907
Height 8½ in.



Nos. 2890, 2891
Dutch Girl
By Gebrüder Micheli
No. 2890 Height 1 ft. 4 in.
2891 Height 11 in.

Nos. 2892, 2893
Sloppy Weather
By Gebrüder Micheli
No. 2892 Height 1 ft. 6 in.
2893 Height 11 in.



No. 2895
Joan of Arc
No. 2896
Height 1 ft. 2 in.
Height 1 ft. 0 in.



No. 2899
No. 2900
No. 2901
Cherubs, to hang
No. 2899 Height 11 in.
No. 2900 Height 1 ft. 1 in.
No. 2901 Height 11 in.
(See also Nos. 2860, 2861, 2869
and 2870)



Phidippides, the Marathon Runner
No. 2902
Height 1 ft. 7½ in.



Council of War
By John Rogers
No. 2903
Height 2 ft.



No. 2905
The Minute Man
By Daniel C. French
On Pedestal No. 6680
No. 2905 Height 2 ft. 9½ in.
6680 Height 3 ft. 2½ in.



The Florentine Singer
By Paul Dubois
In the Louvre
No. 2906
Height 2 ft. 7 in.

MODERN STATUETTES AND REDUCTIONS



Blackhawk Copyright
By Lorado Taft
Reduction of the statue at the Rock
River, near Oregon, Illinois.
No. 2909 Height 4 ft.



Columbus Copyright
By Lorado Taft
Reduction of the statue on the Col-
umbus Fountain, Washington, D. C.
No. 2910 Height 3 ft. 11 in.



Washington Copyright
By Lorado Taft
Reduction of the statue at the
University of Washington, Seattle
No. 2911 Height 4 ft.



Benjamin Franklin
No. 2927 Height 1 ft. 1 in.



Bacchante
By Macmonnies
Reduction of the Statue in the
Metropolitan Museum, New
York
No. 2928 Height 1 ft. 10½ in.



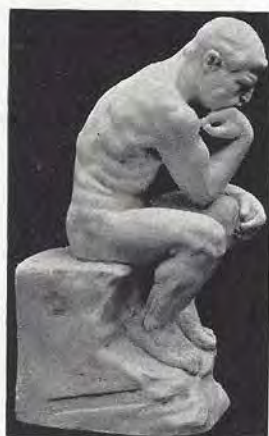
Venus By Canova
No. 2929
Height 3 ft. 4 in.



Washington
By John Rogers
No. 2930
Height 2 ft. 5 in.



Cupid, half round
No. 2936
Height 2 ft. 4 in.



The Thinker
By Rodin
Reduction of the statue in the
Rodin Museum, Paris
No. 2940 Height 8 in.



Copyright
Gen. John J. Pershing
No. 2939 Height 1 ft. 6 in.



No. 2941 No. 2942 No. 2943
Bacchante The Awakening Phryne
By L. Londe By Charmontrex By L. Londe

- No.
- 2941 Height 1 ft.
- 2942 Height 1 ft. 4 in.
- 2943 Height 1 ft. 1 in.

RENAISSANCE AND MODERN STATUETTES AND REDUCTIONS



Thackeray
No. 2944 Height 1 ft. 9 in.



The Three Graces
Reduction of No. 2530A
(See Page 31)
without urn and pedestal
No. 2945 Height 2 ft. 1 in.



Martin Luther
No. 2946 Height 1 ft. 11 1/2 in.



Dante
By A. Mantarani
No. 2947 Height 10 in.

FLOWER BOXES



Fernery, with reliefs of Bacchantes on three sides
No. 3000 Height 2 ft. 5 in.; 3 ft. 8 1/2 in. long by 1 ft. 6 in. wide
No. 3000 In Terra Cotta finish (see Price List)



Flower Box, reliefs on four sides
No. 3001 Height 9 in.; 2 ft. 6 1/2 in. long by 9 in. wide



Flower Box, cherubs' heads
No. 3003 Height 8 in.; 2 ft. 5 in. long by 9 1/2 in. wide



Flower Box, reliefs on four sides
No. 3002 Height 1 ft. 2 in.; 2 ft. 7 in. long by 1 ft. 2 in. wide

MISCELLANEOUS



No. 3512 No. 3513 No. 3514 No. 3515



Nos. 3799, 3800 No. 3800A No. 3801



No. 3802



No. 3803



No. 3804



No. 3805



No. 3806



No. 3807



No. 3811



No. 3815



No. 3813



Nos. 3812, 3817, 3818



No. 3819



No. 3820



No. 3821 No. 3822



No. 3816

No.		Height
3512	Monk. From Tombs of Dukes of Burgundy at Dijon, France	8 in.
3513	Monk. From Tombs of Dukes of Burgundy at Dijon, France	8 in.
3514	Monk. From Tombs of Dukes of Burgundy at Dijon, France	8 in.
3515	Monk. From Tombs of Dukes of Burgundy at Dijon, France	8 in.
3799	Lincoln Imp. Enlargement of No. 3800	3 ft. 5 in.
3800	Lincoln Imp. In the Lincoln Cathedral, England	1 ft. 1 in.
3800A	Lincoln Imp. Reduction of No. 3800	8½ in.
3801	Lincoln Imp. Reduction of No. 3800	6 in.
3802	Gargoyle. From Notre Dame, Paris	1 ft. 3 in.
3803	Gargoyle. From Notre Dame, Paris	1 ft. 4 in.
3804	Gargoyle. From Notre Dame, Paris	1 ft. 1 in.

No.		Height
3805	Gargoyle. From Notre Dame, Paris	1 ft. 2 in.
3806	Gargoyle. From Notre Dame, Paris	1 ft.
3807	Gargoyle "Cluny". From Notre Dame, Paris	1 ft. 2 in.
3811	Gargoyle. From Notre Dame, Paris	1 ft. 3 in.
3812	Devil. From Notre Dame, Paris	1 ft. 3 in.
3813	Skull, on Book	2 in.
3815	Gargoyle. From Notre Dame, Paris	1 ft. 1½ in.
3816	Gargoyle. From Notre Dame, Paris	1 ft. 4 in.
3817	Devil. Reduction of No. 3812	11 in.
3818	Devil. Reduction of No. 3812	6 in.
3819	Devil. From Notre Dame, Paris	6 in.
3820	Skull on Book	5½ in.
3821	Devil. From Notre Dame, Paris	5 in.
3822	Elephant. From Notre Dame, Paris	5 in.

VASES AND COLUMNS



Vase
In the Villa Borghese, Rome
No. 3949 Height 5 ft. 7 in.



Barbarini, or Portland Vase
In the British Museum
No. 3950 Height 10 in.



Homeric Vase
From Pompeii
In the National Museum, Naples
No. 3951 Height 4½ in.



Vase, Antique
In the British Museum
No. 3953 Height 3 ft. 3 in.



Vase, Roman
In the Berlin Museum
No. 3954 Height 2 ft. 9 in.



Vase, Medician
No. 3955 Height 1 ft. 8 in.
3955A Height 1 ft. 1 in.



Neptune Vase
In the Vatican
No. 3957 Height 3 ft. 1 in.



Vase, with Frieze of Sea Horses
In the Vatican
No. 3958 Height 2 ft. 3 in.



Vase, with Rams' Heads
In the Vatican
No. 3959 Height 2 ft. 5½ in.



Vase, with Griffin and Inscription
In the Vatican
No. 3960 Height 2 ft. 3 in.



Vase, Roman
No. 3964 Height 9 in.



Columns from the Roman Forum
No. 3952 Height 2 ft. 5 in.

GREEK AND ROMAN BUSTS



Zeus of Otricoli
In the Vatican

No. 3999 Height 3 ft. 4 in.
4930 Height 0 ft. 5½ in.



Juno Ludovisi
In the Villa Ludovisi, Rome
No. 4000 Height 3 ft. 11 in.
(Half head, mounted)



Juno Ludovisi
Reduced size
No. 4000A Height 3 ft.



Juno Farnese
In the Naples Museum
No. 4001 Height 3 ft.

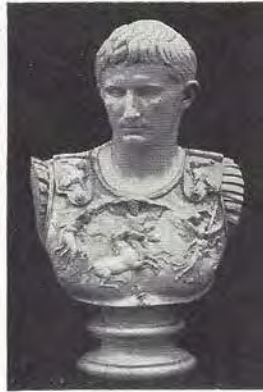


Minerva of Velletri
In the Louvre
No. 4002 Height 3 ft. 3 in.



Ajax
In the Loggia de Lanzi
Florence

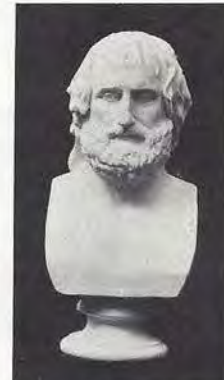
No. 4003 Height 3 ft. 4 in.
4406 Height 2 ft. 1 in.
4929 Height 1 ft. 2 in.



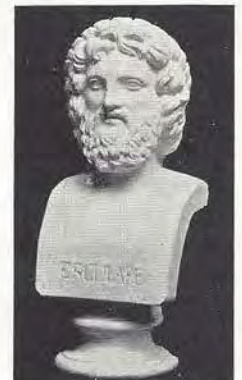
Augustus Caesar
From the statue in the Vatican
No. 4004 Height 2 ft. 8 in.



Niobe
From the group in the Uffizi
Florence
No. 4005 Height 2 ft. 9 in.



Euripides
From the statue in the Vatican
No. 4006 Height 2 ft. 4 in.



Aesculapius
No. 4007 Height 2 ft. 4 in.



Antinous
From the Statue in the
Capitoline Museum
No. 4008 Height 2 ft. 4 in.



Virgil
In the Capitoline Museum
No. 4009 Height 2 ft. 2 in.



Minerva Giustiniani
From the Statue in the
Vatican
No. 4010 Height 2 ft. 6 in.
(See No. 4655 on Page 49)



Hermes
From the Statue at Olympia
No. 4011 Height 2 ft. 9 in.
4400 Height 2 ft. 2 in.
4650 Height 1 ft. 8 in.
4651 Height 1 ft. 5 in.
4900 Height 1 ft. 1 in.
4901 Height 0 ft. 9 in.
4902 Height 0 ft. 7 in.



Venus of Melos
From the Statue in the
Louvre
No. 4012 Height 2 ft. 10 in.
4401 Height 1 ft. 8 in.
4652 Height 1 ft. 3 in.
4903 Height 0 ft. 7½ in.

Busts may be supported by plaster pedestals or brackets. See Pages 65 to 69 inclusive.
Write to us for information as to the pedestal or bracket best adapted to the bust desired.



Venus of Cnidus
No. 4013 Height 2 ft. 10 in.



Apollo Belvedere
From Statue in the Vatican
No. 4014 Height 2 ft. 8 in.
No. 4403 Height 2 ft. 2 in.
No. 4404 Height 1 ft. 8 in.
No. 4908 Height 1 ft. 1 in.
No. 4925 Height 0 ft. 11 in.
No. 4932 Height 0 ft. 8½ in.



Diana of Versailles
From the Statue in the
No. Louvre
4015 Height 2 ft. 6 in.
4405 Height 1 ft. 8 in.
4906 Height 1 ft. 1 in.
4933 Height 0 ft. 8 in.



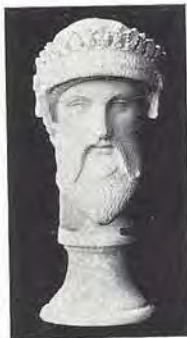
Plato: or Bearded
Dionysos
In the Naples Museum
No.
4016 Height 2 ft. 2 in.
4911 Height 0 ft. 9 in.
4923 Height 0 ft. 3½ in.



Isis
No. 4017
Height 2 ft. 3 in.



Sophocles
In the British Museum
No. 4018 Height 2 ft. 2 in.
No. 4656 Height 1 ft. 5½ in.



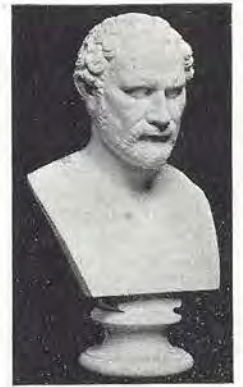
Zeus, Talleyrand
In the Louvre
No. 4020 Height 1 ft. 5 in.



Faun, laughing
In the Louvre
No. 4021 Height 1 ft. 8 in.



Juno
In South Kensington Museum
No. 4022 Height 1 ft. 8 in.



Demosthenes
No. 4019 Height 2 ft. 2 in.
(See No. 4928 on Page 50)



Themistocles
In the Vatican
No. 4023 Height 1 ft. 10 in.



Pericles
In the British Museum
No. 4024 Height 2 ft.



Demeter
From the Statue in the
British Museum
No. 4025 Height 1 ft. 10 in.



Faun
From the Statue by
No. Praxiteles
4026 Height 2 ft.
4907 Height 1 ft.



Clytie In British Museum
No. 4027 Height 2 ft. 3 in.
No. 4402 Height 1 ft. 10 in.
No. 4931 Height 1 ft. 1 in.
No. 4905 Height 0 ft. 10 in.



Psyche of Naples
In the Naples Museum
No. 4028 Height 2 ft. 3 in.



Psyche of Naples
In the Naples Museum
No. 4029 Height 1 ft. 10 in.



Diana, Robing.
From Statue in the Louvre
No. 4030 Height 2 ft.
No. 4658 Height 1 ft. 3 in.



Cleopatra
In the Naples Museum
No. 4031 Height 1 ft. 10 in.

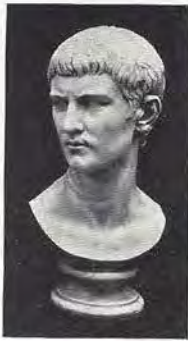


Minerva
From the Statue in the
Louvre
No. 4032 Height 1 ft. 8 in.

GREEK AND ROMAN BUSTS



Young Augustus
In the Vatican
No. 4033 Height 1 ft. 10 in.
4913 Height 1 ft. 2 in.
4914 Height 8 in.
4915 Height 5 in.



Young Agrippa
No. 4034
Height 1 ft. 7 in.



Julius Cæsar
In the British Museum
No. 4035
Height 1 ft. 7 in.



Hera
In the National
Museum, Athens
No. 4036
Height 1 ft. 5 in.



Hypnos
In the British Museum
No. 4037 Height 1 ft. 1 in.



Marcus Claudius Marcellus
In the Naples Museum
No. 4038 Height 1 ft. 9 in.



Cicero
In the Capitoline Museum
No. 4039 Height 1 ft. 8 in.



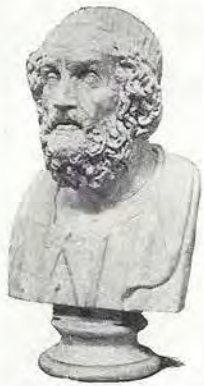
Marcus Junius Brutus
In the Capitoline Museum
No. 4040 Height 1 ft. 8 in.



Apollo, Pourtales
In the British Museum
No. 4041 Height 1 ft. 10 in.



Venus de Medici
From the Statue in the
Uffizi Gallery
No. 4042 Height 2 ft. 2 in.



Homer
In the Naples Museum
No. 4043 Height 2 ft. 3 in.
No. 4904 Height 10 in.



Diomedes
(Sometimes called "Ajax")
In the British Museum
No. 4044 Height 2 ft. 4 in.



Phocion
From the Statue in the Vatican
No. 4045 Height 2 ft. 7 in.



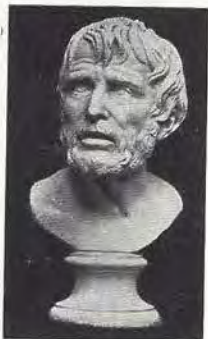
Marcus Aurelius
No. 4046 Height 2 ft. 4 in.



Aratus
In the Naples Museum
No. 4047 Height 2 ft. 2 in.



Julius Cæsar
In the Louvre
No. 4048 Height 2 ft. 2 in.



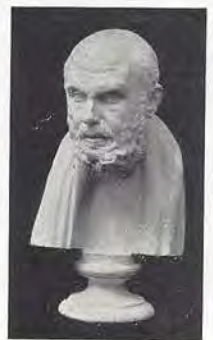
Seneca
In the Naples Museum
No. 4049 Height 2 ft.
No. 4912 Height 9 in.



Socrates
No. 4050 Height 2 ft.
(See No. 4657 on Page 49)



Socrates
No. 4050A Height 1 ft. 10 in.



Hippocrates
No. 4051 Height 1 ft. 10 in.

GREEK AND ROMAN BUSTS



Sappho
In the Naples Museum
No. 4052 Height 1 ft. 10 in.
4910 Height 7½ in.



Laocoön
From the group in the Vatican
No. 4053 Height 2 ft. 6 in.



Ariadne
In the Vatican
No. 4054 Height 2 ft. 5 in.
4924 Height 1 ft.



Omphale
In the Louvre
No. 4055 Height 2 ft. 2 in.



Sappho
In the Louvre
No. 4056 Height 1 ft. 5 in.



Portrait, female head
archaic
In the British Museum
No. 4057 Height 1 ft. 2 in.



Portrait, female head
In the British Museum
No. 4058 Height 2 ft.



Lemnian Athena
In the Museum Civico,
Bologna
No. 4059 Height 1 ft. 6 in.



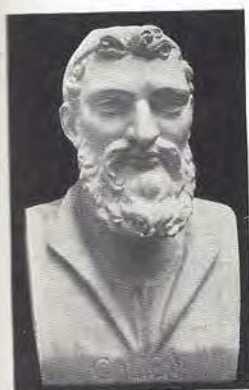
Maiden of Pompeii
In the Naples Museum
No. 4060 Height 1 ft. 1 in.



Julius Caesar
In the Berlin Museum
No. 4061 Height 1 ft. 10 in.



Julius Caesar
In the Chiaramonti
Gallery, Rome
No. 4064 Hgt. 1 ft. 7 in.



Galen
No. 4062 Height 2 ft.



No. 4407



Julius Caesar
No. 4063 Height 2 ft.



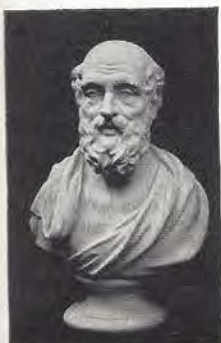
No. 4655



Nos. 4909, 4926



No. 4916



No. 4408



Nos. 4653, 4654



No. 4657

SMALL BUSTS—GREEK AND ROMAN

No.	Height
4407 Galen	1 ft. 6 in.
4408 Hippocrates	1 ft. 6 in.
4653 Homer	1 ft. 4½ in.
4654 Homer	1 ft. 2½ in.
4655 Minerva Giustiniani. (See No. 4010 on Page 46)	1 ft. 6 in.
4657 Socrates	1 ft. 6 in.
4909 Aesculapius	1 ft. 1 in.
4916 Virgil	1 ft.
4926 Aesculapius. Reduction of No. 4909	5½ in.

SMALL BUSTS — GREEK AND ROMAN



No. 4917



No. 4918



No. 4919



No. 4920



No. 4921



No. 4922



No. 4927



No. 4927A

No.		Height
4917	Brutus	9 in.
4918	Virgil	8½ in.
4919	Nero	8½ in.
4920	Titus	7½ in.
4921	Augustus Caesar	7½ in.
4922	Cicero	8 in.
4927	Homer	9 in.
4927A	Homer	11 in.
4928	Demosthenes. (See No. 4019 on Page 47)	11 in.



No. 4928

RENAISSANCE BUSTS



Nicolo Macchiavelli
By Benedetto da Maiano
In Societa Colombaria,
Florence
No. 5150 Height 9½ in.



Boy, Portrait
By Desiderio da Settignano
In Florence
No. 5151 Height 11 in.



Head of Child
By Desiderio da Settignano
In the Church of the Vanchetoni
Florence
No. 5152 Height 1 ft. 1 in.



Young Girl, Portrait
By Luca della Robbia
In the Bargello, Florence
No. 5153 Height 1 ft. 1 in.
6317 Height 8 in.



St. John
By Desiderio da Settignano
In the Church of the Vanchetoni,
Florence
No. 5154 Height 1 ft. 2 in.



Young Girl, Portrait
By a Pupil of
Andrea della Robbia
In the Museum of Thermes,
Rome
No. 5155 Height 1 ft. 4 in.



Medici Youth
By Donatello
No. 5156 Height 1 ft. 6 in.



Madonna
By Michelangelo
From the Statue in the
Notre Dame, Paris
No. 5157 Height 1 ft. 8 in.



Maiden of Lille
Attributed to Raphael
In the Museum, Lille, France
No. 5158 Height 1 ft. 7 in.
6306 Height 9½ in.

RENAISSANCE BUSTS



St. John
By Donatello
No. 5159 Height 1 ft. 6 in.



Young Girl, Portrait
By Donatello
No. 5160 Height 1 ft. 4 in.



St. John
By Donatello
In the Pinacoteca, Florence
No. 5161 Height 1 ft. 3 in.



Laughing Boy
By Donatello
No. 5162 Height 1 ft. 1 in.
6321 Height 6 in.



Infant Christ
By Desiderio da Settignano
In the Dreyfus collection,
Paris
No. 5163 Height 11 in.

Pedestals or brackets may be used to support busts. See Pages 65 to 69 inclusive.



St. John
By Donatello
No. 5164 Height 11 in.



Dante. Believed to have been
from a mould made from nature
In the Naples Museum

No.	Height
5166	1 ft. 1 in.
6255A	9½ in.
6254	7 in.
6254A (with base)	7 in.
6255	6 in.
6256	5½ in.



Young Woman, Portrait
By Antonio Rossellino
In the Bargello, Florence
No. 5167 Height 1 ft. 6 in.



Princess of Urbino
By Desiderio da Settignano
In the Berlin Museum
No. 5168 Height 1 ft. 7 in.



Dante
From a bronze in Florence
No. 5169 Height 1 ft. 7 in.



Filippo Strozzi
By Benedetto da Maiano
In the Berlin Museum
No. 5170 Height 1 ft. 9 in.



Unknown Woman
In the Louvre
No. 5171 Height 1 ft. 10 in.
6271A Height 11 in.
(See also No. 6271 on Page 63)



Marietta Strozzi
By Desiderio da Settignano
In the Berlin Museum
No. 5172 Height 1 ft. 10 in.

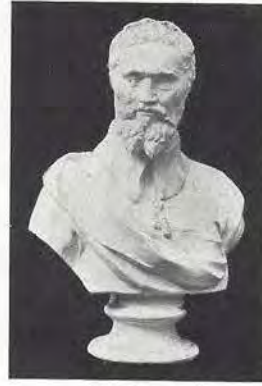
RENAISSANCE BUSTS



Marietta Strozzi
By Desiderio da Settignano
In the Berlin Museum
No. 5173 Height 1 ft. 8 in.



Slave
From the Statue by
Michelangelo
No.
5174 Height 1 ft. 3 in.
6250 Height 10 in.
6251 Height 6 in.
6252 Height 3 in.



Michelangelo
No. 5175 Height 2 ft. 6 in.



Raphael
No.
5176 Height 2 ft. 4 in.
6284 Height 1 ft.
(See also No. 6303
on Page 64)



Tasso
No. 5177 Height 2 ft. 6 in.



Petrarch
No. 5178 Height 2 ft. 6 in.



Ariosto
No. 5179 Height 2 ft. 6 in.



Young Man
By Antonio Pollaiuolo
No. 5181 Height 1 ft. 10 in.

Young Man
By Antonio Pollaiuolo
No. 5182 Height 1 ft. 10 in.



Dante
No. 5180 Height 2 ft. 6 in.



Bishop Salutati
By Mino da Fiesole
In the Duomo di Fiesole,
near Florence
No. 5183 Height 1 ft. 10 in.



San Lorenzo
In the Church of San Lorenzo
Florence
No. 5184 Height 1 ft. 8 in.



Pietro Melini
By Benedetto da Maiano
In the Bargello, Florence
No. 5185 Height 1 ft. 6 in.

Nicolo da Uzzano
By Donatello
In the Bargello,
Florence
No. 5186
Height 1 ft. 2 in.



Costanza Bonarelli
By G. Lorenzo Bernini
No. 5187 Height 2 ft. 4 in.



Christ. By Donatello
In the Church of San Antonio
Padua
No. 5188 Height 1 ft. 6 in.



Perseus
By Benvenuto Cellini
No. 5189 Height 1 ft. 8 in.

RENAISSANCE BUSTS

Note illustrations of busts on pedestals
and brackets on Pages 67 and 69



David
From the colossal Statue by
Michelangelo
In the National Museum, Florence
No. 5193 Height 3 ft. 11 in.



Matteo Palmieri
By Rossellino
No. 5190 Height 1 ft. 9 in.



Giuliano de Medici
From the Statue by
Michelangelo
No. 5191 Height 2 ft. 2 in.



Savonarola
In Florence
No. 5192 Height 2 ft.



St. George
From the Statue by Donatello
No. 5194 Height 2 ft. 3 in.



Monk
In the Convent of San Domenico,
Bologna
No. 5195 Height 1 ft. 5 in.



Lorenzo de Medici
No. 5196 Height 1 ft. 3 in.



Brutus
By Michelangelo
No. 5197 Height 2 ft. 8 in.



Young Girl, Florentine
No. 5198 Height 1 ft. 1 in.



Virgin. By Andrea della Robbia
From Group No. 2513, Page 31
No. 5199 Height 1 ft. 4 in.

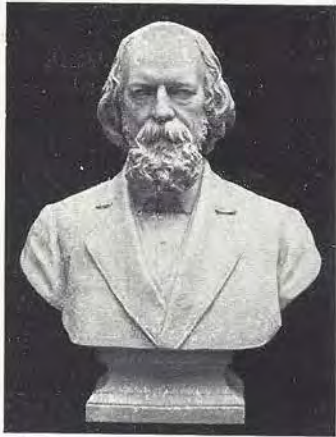


Benevieni
By Luca della Robbia
No. 5200 Height 1 ft. 7 in.



David. By Verrocchio
From Statue No. 2508, Page 27
No. 5201 Height 1 ft. 7 in.

MODERN BUSTS



Copyright

Tennyson

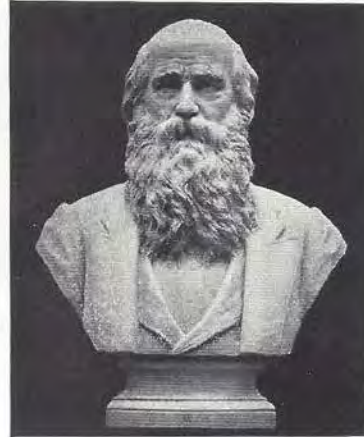
No. 5391 Height 2 ft. 8 in.



Copyright

Dickens

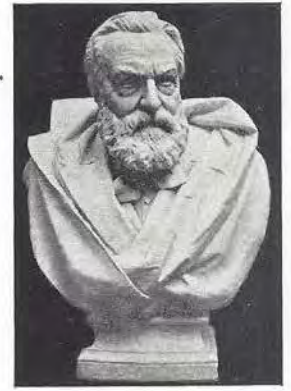
No. 5392 Height 2 ft. 8 in.



Copyright

Bryant

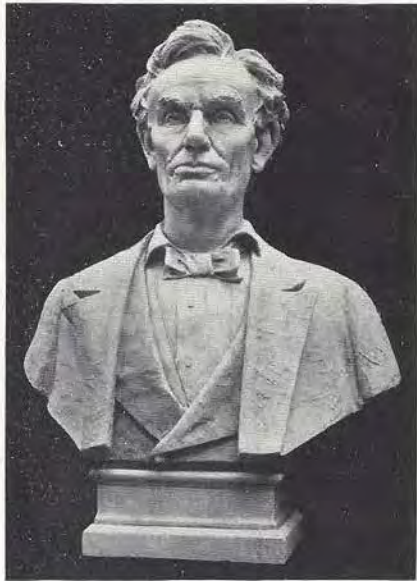
No. 5393 Height 2 ft. 10 in.



Copyright

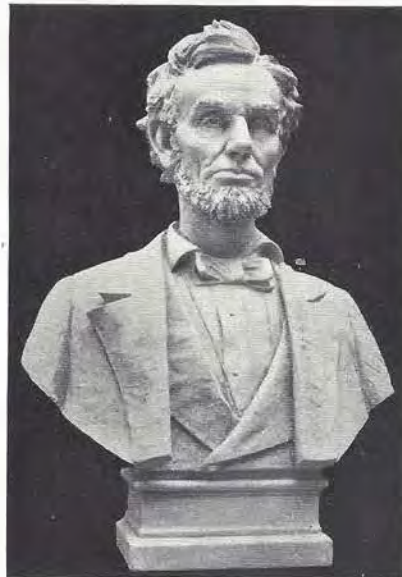
Victor Hugo

No. 5396 Height 2 ft. 8 in.



Copyright

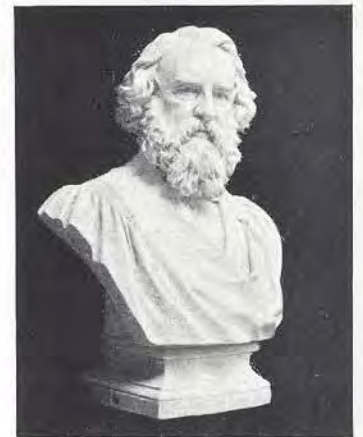
Lincoln. By Max Bachmann
No. 5394 Height 2 ft. 8 in.



Copyright

Lincoln. By Max Bachmann
No. 5395 Height 2 ft. 8 in.

See Pages 65 to 69 inclusive for
pedestals and brackets for support
of busts.



Longfellow. By Thos. Brock
In Westminster Abbey, London
No. 5400 Height 2 ft. 8 in.



Copyright

Lowell

No. 5397 Height 2 ft. 8 in.

Copyright

Tennyson

No. 5398 Height 2 ft. 8 in.

Copyright

Whittier (from death masque)

No. 5399 Height 2 ft. 8 in.

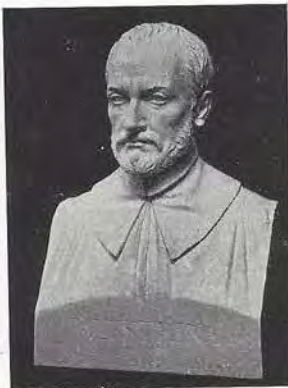


Beethoven

No. 5401 Height 2 ft. 5 in.



Mendelssohn
No. 5402 Height 2 ft. 5 in.



Palestrina
No. 5403 Height 2 ft. 4 in.



Gluck
No. 5404 Height 2 ft. 7 in.



Liszt
No. 5405 Height 2 ft. 8 in.



Mozart
No. 5406 Height 2 ft. 6 in.



Napoleon Bonaparte
By Thos. Ball
No. 5407 Height 2 ft. 10 in.



Byron
No. 5408 Height 2 ft. 10 in.
5754 Height 1 ft. 8 in.



Burns By J. C. King
No. 5409 Height 2 ft. 8 in.
(See No. 6007 on Page 62)



Burke
No. 5410 Height 2 ft. 6 in.



Henry Clay
No. 5411 Height 2 ft. 3 in.



Gen. Joseph Warren
By Greenough
No. 5412 Height 2 ft. 7 in.



John A. Andrew
By Thos. R. Gould
No. 5413 Height 2 ft. 6 in.



John Marshall
By John Frazee
In the Boston Athenæum
No. 5414 Height 2 ft. 9 in.



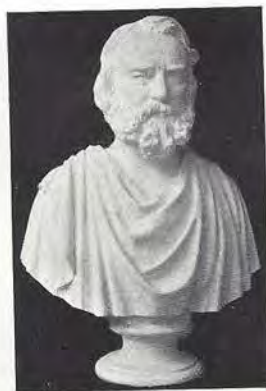
George Bancroft By Greenough
In the Library of Harvard
University, Cambridge
No. 5415 Height 2 ft. 7 in.



Thomas Jefferson
No. 5416 Height 2 ft. 8 in.



Charles Sumner
No. 5417 Height 2 ft. 8 in.



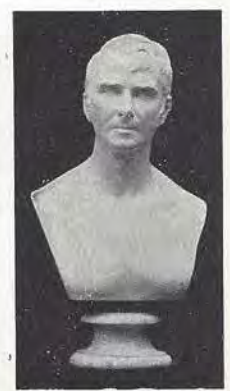
Longfellow
By Dexter
No. 5418 Height 2 ft. 8 in.



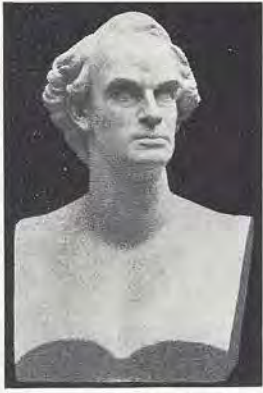
Horace Mann
From a marble bust
owned by the family
No. 5419 Height 2 ft. 6 in.



Judge Shaw
No. 5420 Height 2 ft. 6 in.



William E. Channing
By Persies
No. 5421 Height 2 ft. 4 in.



Hawthorne. By Louisa Lander
In the Public Library
Concord, Mass.
No. 5422 Height 2 ft.



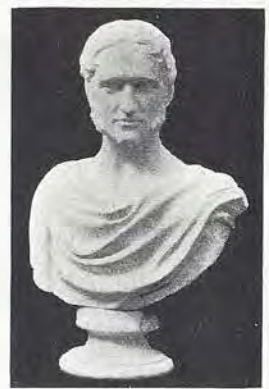
John Quincy Adams
No. 5423 Height 2 ft.



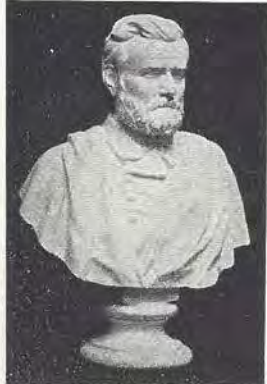
Washington Irving
By Ball Hughes
Only bust of Irving from life
No. 5424 Height 2 ft.



Hamilton
No. 5425 Height 2 ft. 3 in.



Prescott
By R. S. Greenough
No. 5426 Height 2 ft. 4 in.



Grant
By Franklin Simmons
No. 5427 Height 2 ft. 8 in.



Wendell Phillips
By Martin Milmore
No. 5428 Height 2 ft. 5 in.



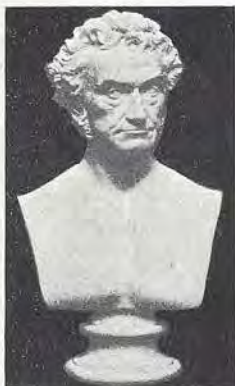
Daniel Webster
By Thomas Ball
5429 Height 2 ft. 10 in.
6296 Height 1 ft.



Daniel Webster
By J. C. King
In Faneuil Hall, Boston
5430 Height 2 ft. 6 in.
5762 Height 1 ft. 7 in.



Louis Agassiz
By Jackson
No. 5431 Height 2 ft. 8 in.



Rufus Choate
By Thomas Ball
In Suffolk County Court
House, Boston
No. 5432 Height 2 ft. 5 in.



John Adams
By Binon
In Faneuil Hall, Boston
No. 5433 Height 2 ft. 1 in.



Froebel
5434 Height 2 ft. 4 in.
6015 Height 1 ft. 4 in.



Milton
5435 Height 2 ft. 5 in.
5757 Height 1 ft. 9 in.
6010 Height 1 ft. 5 in.



Shakespeare. By Roubilliac
In the British Museum.
5436 Height 2 ft. 5 in.
5758 Height 1 ft. 9 in.
6011 Height 1 ft. 5 in.
6286 Height 9 in.



Scott
By Sir Francis Chantry
5437 Height 2 ft. 8 in.
5759 Height 1 ft. 9 in.



Newton
No. 5438 Height 2 ft. 6 in.
(See also No. 5760 on Page 61)



Locke
No. 5439 Height 2 ft. 6 in.



Columbus. By Canova
In the Capitoline Museum,
Rome
No. 5440 Height 2 ft. 3 in.



Pestalozzi
No. 5441 Height 2 ft.

MODERN BUSTS



Meyerbeer
No. 5442 Height 2 ft.



Mendelssohn
No. 5443 Height 2 ft. 2 in.
6005 Height 1 ft. 5 in.



Mozart
No. 5444 Height 2 ft.



Beethoven
No. 5445 Height 2 ft.



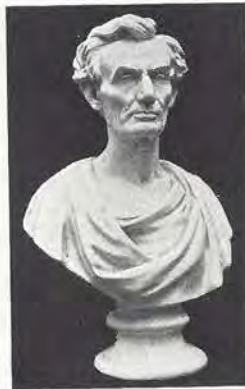
Franklin By Houdon
No. 5446 Height 2 ft.
6332 Height 8 in.



Franklin
By Houdon
No. 5446A Height 2 ft. 4 in.



Washington By Crawford
In the Lenox Library, New York
No. 5447 Height 2 ft. 5 in.



Lincoln
By Volke
No. 5448 Height 2 ft. 6 in.



Lincoln
By Vinnie Ream
No. 5449 Height 2 ft. 5 in.



Lafayette
By Houdon
No. 5450 Height 2 ft. 6 in.



Beethoven By John Rogers
No. 5451 Height 2 ft. 3 in.
6020 Height 1 ft. 5 in.



Humboldt
By Houdon
No. 5452 Height 2 ft. 3 in.



Cuvier
By David d'Angers
No. 5453 Height 1 ft. 10 in.



Rousseau By Houdon
In the Institute of France
No. 5454 Height 1 ft. 10 in.



Voltaire By Houdon
From the Statue at Versailles
No. 5455 Height 2 ft.



Shakespeare
From the Stratford
Monument, England
No. 5456 Height 1 ft. 6 in.



Washington
By Houdon
No. 5457 Height 1 ft. 8 in.



Holmes
By Cyrus E. Dallin
No. 5458
Height 1 ft. 11 in.



Holmes
By Cyrus E. Dallin
No. 5459 Height 2 ft.



Emerson
By Daniel C. French
Only bust from life
No. 5460 Height 2 ft.



Queen Louise By Rauch
From the Statue at
Charlottenburg
No. 5461 Height 2 ft. 5 in.

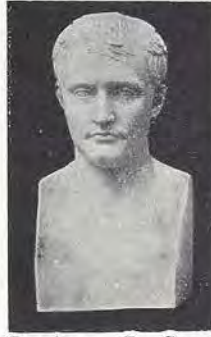
MODERN BUSTS



Mme. Récamier
By Carpeaux
No. 5462 Height 2 ft.



Napoleon Bonaparte,
First Consul, By Canova
No. 5463 Height 2 ft.



Napoleon, By Canova
No. 5464 Height 1 ft. 10 in.
No. 6258 Height 1 ft. 0 in.
No. 6259 Height 3¼ in.



Shakespeare
By Carrier Belleuse
No. 5465 Height 1 ft. 11 in.



Schiller
No. 5466 Height 2 ft. 4 in.



Goethe
No. 5467 Height 2 ft. 4 in.
No. 6310 Height 1 ft. 0 in.



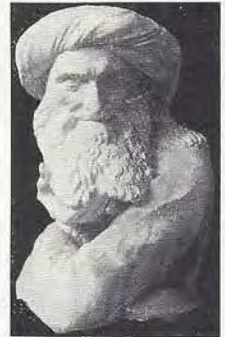
Nubian Girl
By Carpeaux
No. 5468 Height 2 ft. 4 in.



Nubian Man
By Carpeaux
No. 5469 Height 2 ft. 4 in.



Mercury, By Thorwaldsen
No. 5470 Height 2 ft. 6 in.
No. 6282 Height 10 in.



Prophet
(Called also de Lichtenberg)
In Strasburg
No. 5471 Height 1 ft. 7 in.



Young Woman
In Strasburg
No. 5472 Height 1 ft. 7 in.



Schubert
No. 5473 Height 1 ft. 11 in.



Washington
No. 5475 Height 2 ft. 6 in.

From
the
statue
of
Washington,
by
Houdon,
in
Richmond,
Va.



Washington
No. 5475A Height 2 ft. 8 in.



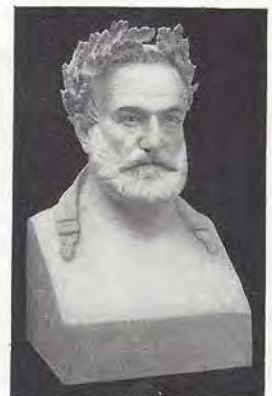
Volta, By Comolli
No. 5474 Height 2 ft. 10 in.
No. 5767 Height 1 ft. 11 in.



Molière, By Houdon
No. 5476 Height 2 ft. 9 in.
(See No. 6304 on Page 64)



Racine
By Houdon
No. 5477 Height 2 ft. 9 in.



Victor Hugo
By Arrondelle
No. 5478 Height 3 ft. 4 in.



La Place
No. 5479 Height 2 ft. 4 in.



McKinley (Copyright)
No. 5480 Height 2 ft. 4 in.



McKinley (Copyright)
No. 5480A Height 2 ft. 6 in.



Liszt By Thomas Ball
No. 5481 Height 2 ft. 6 in.



Ambroise Paré
No. 5483 Height 1 ft. 11 in.



Wagner By F. Schafer
No. 5482 Height 2 ft. 8 in.
No. 5770 Height 1 ft. 7 in.
No. 6298 Height 1 ft. 2 in.



Paul Revere (Copyright)
By Robert Krauss
No. 5484 Height 3 ft. 9 in.
No. 6019 Height 1 ft. 3 in.



Martin Luther
By Lucas Cranach
No. 5485 Height 2 ft. 2 in.



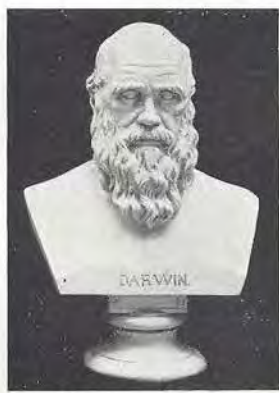
Emerson
By J. C. King
No. 5486 Height 2 ft. 5 in.



Napoleon Bonaparte
By Canova
No. 5493
Height 2 ft. 1 in.



Heine
By E. Herter
No. 5487 Height 1 ft. 8 in.



Darwin. By Lehr
No. 5488 Height 2 ft. 1 in.
(See No. 6318 on Page 64)



Lessing
By Reitschel
No. 5489 Height 2 ft. 3 in.



Beethoven. By Landgrebe
No. 5490 Height 2 ft. 4 in.
(See also 6006 on Page 62.)



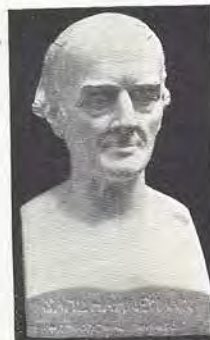
Copyright
Indian Chief
By Max Bachmann
5494 Height 2 ft. 1 in.
5766 Height 1 ft. 5½ in.



Washington
In private collection, Boston
No. 5491 Height 2 ft. 10 in.



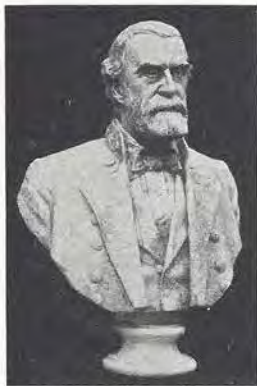
Liszt
By Boehm
No. 5495 Height 1 ft. 11 in.



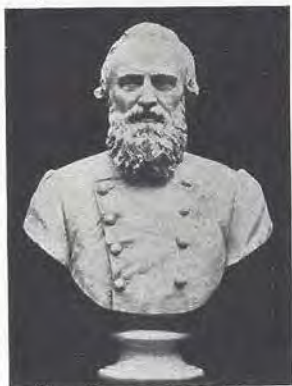
Samuel Hahnemann
No. 5496 Height 1 ft. 7 in.



Paul Jones
By Houdon
No. 5497 Height 2 ft. 4 in.



Gen. Robt E. Lee (Copyright)
By W. Pierce Roberts
No. 5498 Height 2 ft. 8 in.



Gen. Stonewall Jackson
No. 5499 Height 2 ft. 8 in.



James A. Garfield (Copyright)
No. 5500 Height 2 ft. 8 in.



Queen Victoria (Copyright)
No. 5501 Height 2 ft. 7 in.



King Edward VII (Copyright)
By W. Pierce Roberts
No. 5502 Height 2 ft. 8 in.



Julia Ward Howe (Copyright)
By Cyrus E. Dallin
No. 5503 Height 2 ft. 8 in.



Harriet Beecher Stowe (Copyright)
By Cyrus E. Dallin
No. 5504 Height 2 ft. 8 in.



Francis E. Willard (Copyright)
By Cyrus E. Dallin
No. 5505 Height 2 ft. 8 in.



Bishop Phillips Brooks
By Bela L. Pratt
No. 5506 Height 2 ft. 8 in.



James Whitcomb Riley (Copyright)
By P. Bryant Baker
No. 5507 Height 2 ft. 8 in.



Woodrow Wilson (Copyright)
By P. Bryant Baker
No. 5508 Height 2 ft. 6 in.



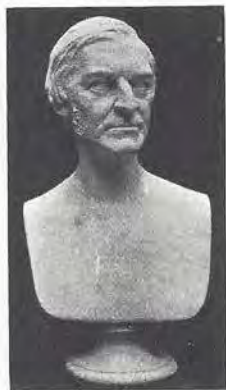
Theodore Roosevelt (Copyright)
By P. Bryant Baker
No. 5509 Height 2 ft. 6 in.



Gen. John J. Pershing (Copyright)
By P. Bryant Baker
Modeled from life
No. 5511 Height 2 ft. 6 in.



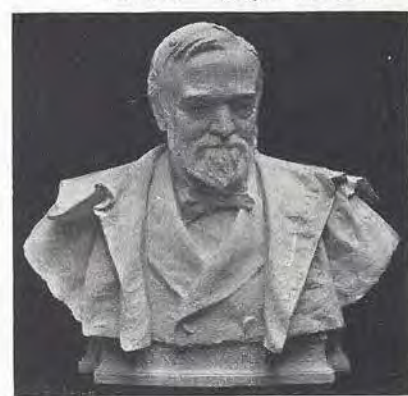
Pauline Bonaparte. By Canova
No. 5512 Height 2 ft.
No. 5513 Height 1 ft. 10 in.
From the Statue in the Villa Borghese, Rome



Emerson
By Martin Milmore
No. 5514 Height 2 ft. 2 in.



The Vision, (Lindbergh) (Copyr't)
By Cyrus E. Dallin
No. 5515 Height 1 ft. 10 in.
No. 5515A Height 1 ft. 5½ in.



Carnegie By J. Massey Rhind
No. 5516
Height 2 ft. 1 in.

SMALL BUSTS — MODERN



St. Bruno
By Houdon
No. Height
5750 1 ft. 8 in.
6261 10 in.



Beethoven
No. Height
5751 1 ft. 8 in.
6024 1 ft. 5½ in.
6265 11 in.
6267 7½ in.



Mozart
No. Height
5752 1 ft. 8 in.
6023 1 ft. 5 in.
6264 11 in.
6266 7½ in.



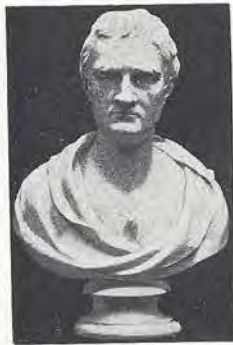
Wagner
No. Height
5753 2 ft.
5765 1 ft. 7 in.



Dickens
No. Height
5755 1 ft. 1 in.
6021 1 ft. 4 in.
6309 11 in.
6319 9 in.



John Locke
No. Height
5756 1 ft. 10 in.



No. 5760



No. 5761



No. 5763



No. 5764



No. 5768



No. 5769



No. 5771



Copyright
No. 6000



No. 6001



No. 6002



No. 6003



No. 6004

No.	Height
5760 Newton	1 ft. 10 in.
5761 William E. Gladstone	1 ft. 7 in.
5763 Victor Hugo	1 ft. 7 in.
5764 James Russell Lowell	1 ft. 5 in.
5768 Lafayette	2 ft.
5769 Bach	1 ft. 5 in.
5771 Napoleon	1 ft. 8 in.

No.	Height
6000 Columbus. By H. H. Kitson. <i>Copyright</i>	1 ft. 3 in.
6001 Watteau Lady. By G. Van der Straetten	1 ft. 2 in.
6002 Directoire Lady. By R. Allard	1 ft. 2 in.
6003 Coquette Parisienne	1 ft. 4 in.
6004 Paderewski	1 ft. 3 in.

SMALL BUSTS — MODERN



Beethoven
By Landgrebe

No.	Height
6006	1 ft. 5 in.
6268	10 in.
6268A	7½ in.



No. 6007



No. 6008



No. 6009



Charles Sumner

No.	Height
6012	1 ft. 6 in.
6288	1 ft.



No. 6013



No. 6014



No. 6016



No. 6017



No. 6025

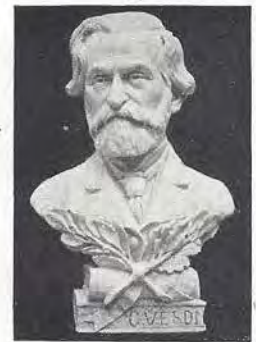


Copyright
No. 6018

Copyright
No. 6019



Copyright
No. 6026



No. 6027

No.		Height
6007	Burns	1 ft. 4 in.
6008	Dickens	1 ft. 2 in.
6009	Washington Irving	1 ft. 4 in.
6013	Judge Shaw. By J. C. King	1 ft. 1 in.
6014	General Scott. By J. C. King	1 ft. 1 in.
6016	Napoleon Bonaparte	1 ft. 4 in.
6017	Whittier. By William Ordway Partridge	1 ft. 4½ in.

No.		Height
6018	Paul Revere. By Robert Krauss. <i>Copyright</i>	1 ft. 3 in.
6019	Paul Revere. <i>Copyright</i> . Reduction of No. 5484	1 ft. 3 in.
6025	Napoleon Bonaparte	1 ft. 4½ in.
6026	James Whitcomb Riley. By Walter R. Williams. <i>Copyright</i>	1 ft. 2 in.
6027	Giuseppe Verdi	1 ft. 3½ in.

SMALL BUSTS — MODERN



No. 6253



No. 6257



No. 6260



No. 6262



No. 6269



No. 6270



No. 6271



No. 6272



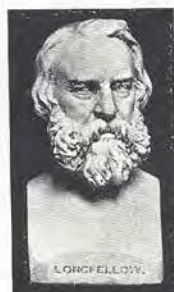
No. 6273



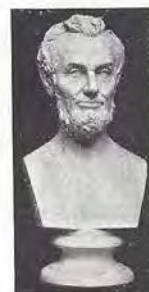
No. 6274



No. 6275 No. 6276 No. 6277 No. 6278



No. 6279



No. 6280



No. 6281



No. 6283



No. 6285



No. 6287



No. 6289



No. 6290

No.	Height
6253 Dante	1 ft.
6257 Napoleon Bonaparte	7½ in.
6260 Napoleon I. Head half round with hook to hang	3½ in.
6262 Napoleon. By David d'Angers	1 ft.
6269 Beethoven	4½ in.
6270 Lord Byron	1 ft.
6271 Unknown Woman. Reduction of No. 5171	9 in.
6272 Emerson. By Morse	1 ft. 3 in.
6273 Emerson. Head, half round, with hook to hang. By Morse	4 in.
6274 Faun, laughing. By Carpeaux	1 ft.
6275 Schiller	7 in.

No.	Height
6276 Schiller	1 ft.
6277 Goethe	1 ft.
6278 Goethe	7 in.
6279 Longfellow. By Milmore	1 ft.
6280 Lincoln. By Milmore	1 ft. 2 in.
6281 Lincoln	1 ft.
6283 Prescott	10 in.
6285 Shakespeare	1 ft.
6287 Scott	1 ft.
6289 Liszt. By Boehm	11 in.
6290 Liszt	1 ft.

SMALL BUSTS — MODERN



No. 6291



No. 6292



No. 6293



No. 6294



No. 6295



No. 6297



No. 6299



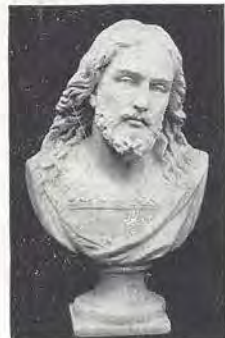
No. 6300



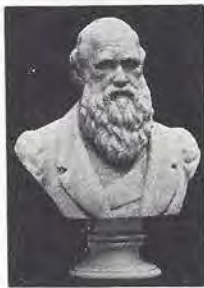
No. 6301 No. 6302 No. 6303 No. 6304 No. 6305



No. 6307 No. 6308



No. 6311



No. 6318



No. 6320



No. 6324 No. 6325



No. 6326



No. 6327



No. 6328



No. 6329



No. 6330 ^{Copyright}



No. 6331

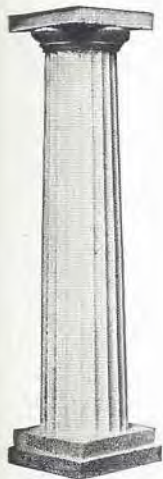


No. 6333

No.	Height
6291 Tennyson	1 ft. 6 in.
6292 Tennyson	1 ft. 8 in.
6293 Thackeray	9 in.
6294 Washington	1 ft. 1 in.
6295 Lincoln	1 ft. 2 in.
6297 Wagner	9 in.
6299 Handel	7½ in.
6300 Holmes	1 ft.
6301 Bach	4¾ in.
6302 Washington	3½ in.
6303 Raphael. Reduction of No. 5176	5 in.
6304 Molière. Reduction of No. 5476	5 in.
6305 Voltaire. Reduction of No. 5455	5 in.
6307 Molière	6 in.

No.	Height
6308 Racine	6 in.
6311 Christ. By Thorwaldsen	1 ft. 3 in.
6318 Darwin	9½ in.
6320 Dante	8½ in.
6324 Boy, crying	8 in.
6325 Boy, laughing	8 in.
6326 Sumner	1 ft. 1 in.
6327 Thomas Carlyle. By Sidney Morse	1 ft. 2½ in.
6328 Gen. Robert E. Lee	10 in.
6329 Garfield	1 ft. 4 in.
6330 Admiral George Dewey. Copyright	11½ in.
6331 St. John	9 in.
6333 Enrico Caruso	6½ in.

PEDESTALS—SUPPORTS FOR BUSTS AND STATUETTES



No. 6650



Nos. 6651, 6651B



Nos. 6651A, 6651C



No. 6652



No. 6653



No. 6654



No. 6655



No. 6656



No. 6657



Nos. 6658, 6658A



No. 6659 No. 6660



No. 6661



No. 6662



No. 6662A

No.	Description	Top	Height
6650	Pedestal, fluted	Top 10 x 10 in.	3 ft. 9½ in.
6651	Pedestal, fluted	Diameter of top 10½ in.	3 ft. 3 in.
6651A	Pedestal, fluted	Top 11 x 11 in.	3 ft. 4 in.
6651B	Pedestal, fluted	Diameter of top 10½ in.	4 ft.
6651C	Pedestal, fluted	Top 11 x 11 in.	4 ft. 1 in.
6652	Pedestal, Renaissance	Top 9½ x 9½ in.	4 ft.
6653	Pedestal, Antique. In the Louvre	Top 9¾ x 9¾ in.	3 ft. 1 in.
6654	Pedestal, Roman	Diameter of top 13 in.	3 ft. 6 in.
6655	Pedestal, Roman	Diameter of top 10 in.	2 ft. 5½ in.
6656	Pedestal, fluted, decorated with Anthemion	Diameter of top 14 in.	2 ft. 10 in.
6657	Pedestal, Tuscan	Top 14 x 14 in.	3 ft. 6 in.
6658	Pedestal, fluted	Diameter of top 16 in.	3 ft.
6658A	Pedestal, fluted	Diameter of top 16 in.	3 ft. 11 in.
6659	Pedestal, Renaissance	Top 2½ x 2½ in.	10½ in.
6660	Pedestal, Renaissance	Top 2½ x 2½ in.	1 ft. 1 in.
6661	Pedestal, Antique. In the Louvre	Top 9¾ x 9¾ in.	3 ft. 4 in.
	Originally designed for a candelabrum.		
6662	Pedestal, Roman	Diameter of top 14 in.	3 ft. 2 in.
6662A	Pedestal, Roman	Top 14½ x 14½ in.	3 ft. 3½ in.

The bases of statuettes and busts vary so in dimensions that we advise writing to us for information as to the pedestal best adapted to the bust or statuette desired.

PEDESTALS—SUPPORTS FOR BUSTS AND STATUETTES



No. 6663



No. 6664 No. 6665



No. 6666 No. 6667 No. 6668



No. 6669



No. 6670



No. 6671



No. 6672



Nos. 6673, 6674, 6675, 6675A, 6681



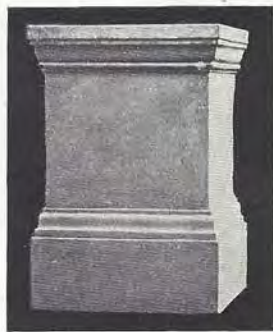
No. 6679



No. 6680



No. 6676 No. 6677



No. 6678

Large statues require wooden pedestals which must be made to order as we do not carry them in stock. We advise having these built in Manual Training Class or by a local carpenter, thus eliminating the transportation charges. Upon request, we furnish a working plan of pedestal free of charge to schools purchasing our large statues.

No.		Height
6663	Pedestal, Ionic	Top 9 x 9 in. 4 ft. 1 in.
6664	Pedestal, Gothic	Diameter of top 11½ in. 3 ft. 4½ in.
6665	Pedestal, Doric	Top 11¾ x 11¾ in. 4 ft. 1 in.
6666	Pedestal, square	Top 17½ x 25¼ in. 2 ft. 10½ in.
6667	Pedestal, square	Top 13 x 17½ in. 3 ft. 2 in.
6668	Pedestal, square	Top 19 x 19 in. 3 ft.
6669	Pedestal	Top 16 x 16 in. 3 ft. 6½ in.
6670	Pedestal	Top 9 x 9 in. 3 ft. 4 in.
6671	Pedestal, Modern	Top 8 x 8 in. 3 ft. 1½ in.
6672	Pedestal, Roman	Top 10 x 10 in. 3 ft. 7 in.
6673	Pedestal	Top 12¼ x 21½ in. 3 ft. 6 in.
6674	Pedestal	Top 12¼ x 14½ in. 3 ft. 6 in.
6675	Pedestal	Top 12¼ x 12½ in. 3 ft. 6 in.
6675A	Pedestal	Top 18 x 19 in. 3 ft. 6 in.
6676	Pedestal, fluted	Diameter of top 12 in. 2 ft. 5 in.
6677	Pedestal, fluted	Diameter of top 10½ in. 1 ft. 8½ in.
6678	Pedestal, square	Top 19 x 19 in. 2 ft. 3 in.
6679	Pedestal, fluted	Top 12 x 12 in. 3 ft. 3 in.
6680	Pedestal, square	Top 15 x 16 in. 3 ft. 2½ in.
6681*	Pedestal	Top 20½ x 20½ in. 3 ft. 7¼ in.

* Suitable for Flying Mercury, No. 2501 on page 27.

PEDESTALS—SUPPORTS FOR STATUETTES AND BUSTS



Nos. 752, 6657
No. 752 Nike Height 3 ft. 0 in.
on Pedestal 3 ft. 6 in.



Nos. 5475, 6651
No. 5475 Washington Height 2 ft. 6 in.
on Pedestal 3 ft. 3 in.



Nos. 5395, 6657 Copy'gt
No. 5395 Lincoln Height 2 ft. 8 in.
on Pedestal 3 ft. 6 in.



Nos. 5475A, 6657
No. 5475A Washington Height 2 ft. 8 in.
on Pedestal 3 ft. 6 in.

BRACKETS—SUPPORTS FOR BUSTS AND STATUETTES

First dimension is top projection; second dimension is width



No. 6800



Nos. 6801, 6801A



No. 6802



No. 6803



No. 6804

Directions for attaching brackets to wall on Page 5



No. 6805



No. 6806



No. 6807



No. 6808



No. 6809



No. 6810

No. 6800	Bracket, Renaissance	13½ x 11½ in.
No. 6801	Bracket, Renaissance	11½ x 11½ in.
No. 6801A	Reduction of No. 6801	7 x 7 in.
No. 6802	Bracket, for corner, Gothic	10 x 12 in.
No. 6803	Bracket, Ram's Head	6 x 7½ in.
No. 6804	Bracket, Renaissance	6½ x 7 in.

No. 6805	Bracket, Gothic	5½ x 6 in.
No. 6806	Bracket, Renaissance	4½ x 5 in.
No. 6807	Bracket, Gothic	6½ x 8 in.
No. 6808	Bracket, By Michelangelo	10 x 11½ in.
No. 6809	Bracket, with Angel Head	5 x 7 in.
No. 6810	Bracket, with Head of Bacchus	7 x 10 in.

BRACKETS — SUPPORTS FOR BUSTS AND STATUETTES

First dimension is top projection. Second dimension is width



No. 6811



No. 6812



No. 6813



No. 6814



No. 6815



No. 6816



No. 6817



No. 6818



No. 6819



No. 6820



No. 6821



No. 6822



No. 6823



No. 6824



No. 6825



No. 6826



Nos. 6827, 6828

No.		
6811	Bracket, Renaissance	9½ x 10½ in.
6812	Bracket, Roman. From the Vatican	13½ x 13½ in.
6813	Bracket. From the Tomb of Cardinal Ambrose	11½ x 14 in.
6814	Bracket. From the Palazzo Cancelleria, Rome	18 x 13 in.
6815	Bracket, with Eagle	12 x 11 in.
6816	Bracket. From Notre Dame, Paris	6½ x 8 in.
6817	Bracket. From Notre Dame, Paris	6½ x 8 in.
6818	Bracket, Gothic	13¾ x 16¾ in.
6819	Bracket. From Santa Croce, Florence	8 x 8 in.

No.		
6820	Bracket	4¼ x 4 in.
6821	Bracket	8 x 8½ in.
6822	Bracket, for corner, Gothic	6 x 6 in.
6823	Bracket, Renaissance	11½ x 19½ in.
6824	Bracket, Modern	18 x 20 in.
6825	Bracket, for corner, Gothic	27 x 30 in.
6826	Bracket. From Santa Croce, Florence	10½ x 7½ in.
6827	Bracket, Roman, with Eagle	14 x 11 in.
6828	Bracket. Reduction of No. 6827	3¼ x 3 in.

BRACKETS — SUPPORTS FOR BUSTS AND STATUETTES

First dimension is top projection. Second dimension is width



No. 6830



No. 6830A



No. 6831



No. 6832



No. 6833



No. 6834



No. 6835



No. 6836



No. 6829

No.		
6829	Bracket, Renaissance	4½ x 4¼ in.
6830	Bracket, with Eagle, round top . . .	13 x 10 in.
6830A	Bracket, with Eagle	13½ x 13 in.
6831	Bracket, with Acanthus	14 x 14 in.
6832	Bracket, with Acanthus, oval front . .	20 x 18 in.

No.		
6833	Bracket, Greek Style	11½ x 12½ in.
6834	Bracket, Greek Style	9 x 8 in.
6835	Bracket, with Acanthus	17 x 16 in.
6836	Bracket, Roman	13½ x 23½ in.

The bases of statuettes and busts vary so in dimensions that we shall be glad to advise the bracket best suited to the bust or statuette desired.

WALL BRACKETS — SUPPORTS FOR BUSTS AND STATUETTES



Nos. 5447, 6800
No. 5447 Washington
on
No. 6800 Bracket



Nos. 5509, 6831 Copyright
No. 5509 Roosevelt
on
No. 6831 Bracket



Nos. 5448, 6815
No. 5448 Lincoln
on
No. 6815 Bracket



Nos. 781, 6831
No. 781 Minerva Giustiniani
on
No. 6831 Bracket