

# CAPRONI COLLECTION

 SCULPTURE REPRODUCTIONS 

Visit us on the web at [capronicollection.com](http://capronicollection.com)

As this digital catalog is not copyrighted, please reference the Caproni Collection as the source if you copy or use this historical material.

Digitized by Caproni Collection

# CAPRONI CASTS

American Indians and Other Sculptures

---

By CYRUS E. DALLIN



---

P. P. CAPRONI AND BROTHER

MAKERS OF

Plaster Reproductions of Ancient and Modern Sculpture

1914-1920 WASHINGTON STREET

BOSTON, MASSACHUSETTS, U.S.A.

---

COPYRIGHT, 1915, BY P. P. CAPRONI AND BROTHER, INC.

ALL RIGHTS RESERVED



## THE SCULPTOR



YRUS EDWIN DALLIN, one of America's most original and distinctively American sculptors, was born in Springville, Utah, in 1861. Two circumstances of his early life in the western wilderness profoundly influenced him—the proximity of the little log cabin where he was born to the lofty Wasatch Mountains, and his familiarity with the Indians in their native haunts. The first awakened and fostered in him a love for sublimity of form; and the second furnished him with an unfailing source of material for his creative work.

At the age of eighteen Mr. Dallin went to Boston and began his art studies. In 1888 he went to Paris, where he remained till 1890, studying at the *École des Beaux Arts* and at *Académie Julien* under Henri Chapu. He returned to America in 1890 and married Miss Vittoria Colonna Murray in 1891. After two years in Salt Lake City, he returned to Boston, where he remained till 1895, when he went to Philadelphia to teach in the Drexel Institute. In 1896 he went to Paris again and worked under Jean Dampé. On his return in 1899, he became instructor in modelling in the Massachusetts Normal Art School. His principal works are portrait statues, busts, and bas-reliefs; equestrian statues; monuments; and works on ideal subjects.

Of the first group the most important are: "Sir Isaac Newton," Congressional Library, Washington; "Gen. Hancock," Gettysburg; "My Mother"; "Rev. Francis Hornbrook," Channing Church, Newton; "Oliver Wendell Holmes"; "Mrs. Julia Ward Howe," Museum of Fine Arts, Boston.

Among the equestrian statues are "Paul Revere," "The Cavalry Man" at Hanover, and a series of equestrian statues of Indians which embodies in plastic form the epic of the Indian race. The "Signal of Peace" in Lincoln Park, Chicago, is the first of the series. The "Medicine Man," in Fairmount Park, Philadelphia; the "Protest," which was used as a decoration of the Exposition grounds at St. Louis; the "Appeal to the Great Spirit," in front of the Museum of Fine Arts in Boston; the "Scout," of heroic size, to be shown at the Panama-Pacific Exposition,—all help to tell the story, which is continued by several other statues depicting Indian life.

The principal monuments executed by Mr. Dallin are the "Pioneer Monument," in Salt Lake City, and the "Soldiers' and Sailors' Monument," Syracuse, N.Y.

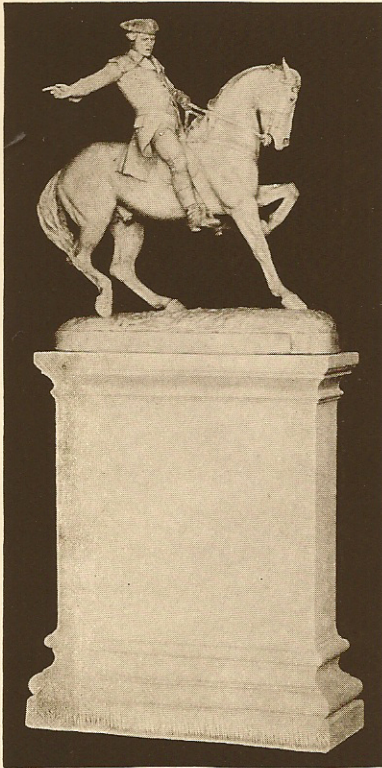
Among the statues on ideal subjects are "Don Quixote," owned by Thomas W. Lawson; the "Indian Hunter," a fountain placed in the Civic Center at Arlington in 1913; and the four figures for the flagstaff for the Robbins Memorial Town Hall, typifying epochs in the town history, erected in Arlington in 1914.

Mr. Dallin has received many medals and honors both in America and in Europe; in 1888 a gold medal from the American Art Association of New York; at the Chicago Exposition, 1893, a first class medal; silver medals from the Massachusetts Charitable Mechanics Association, Boston, 1895; from the Paris Exposition, 1900; the Buffalo Exposition of 1901, and the Jamestown Exposition. At the St. Louis Exposition he received a gold medal in 1904, and in 1909 he received a gold medal from the Paris Salon, an honor which had then been conferred on only six American sculptors.



C A P R O N I C A S T S

All the subjects published in this booklet are copyrighted  
 They are made and for sale exclusively by  
**P. P. CAPRONI AND BROTHER**  
 Makers of the well-known Caproni Casts  
 Boston, Massachusetts



PAUL REVERE No. 2872  
 ON PEDESTAL No. 2872A

From the original model, accepted by the Committee for the Erection of the Paul Revere Monument in Boston, and approved by the Boston Art Commission.

No.			
2872	Height, 3 ft. 2 in.	. . .	\$50.00
2872A	Pedestal, 3 ft. 6 in.	. . .	20.00

Liberal discount to schools and other educational institutions



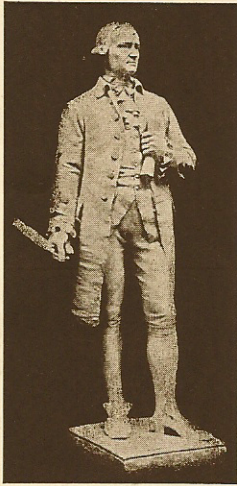
MEDICINE MAN No. 2880  
 ON PEDESTAL No. 2880A

The "Medicine Man" received silver medal, Paris Exposition, 1900; silver medal, Pan-American Exposition, 1901. The Austrian Government endeavored to purchase this statue when it was on exhibition in Paris, but it had been sold, before their offer was made, to Fairmount Park, Philadelphia, where the bronze original, heroic size, now stands.

No.			
2880	Height, 2 ft. 7 in.	. . .	\$50.00
2880A	Pedestal, 3 ft. 6 in.	. . .	20.00



CAPRONI CASTS



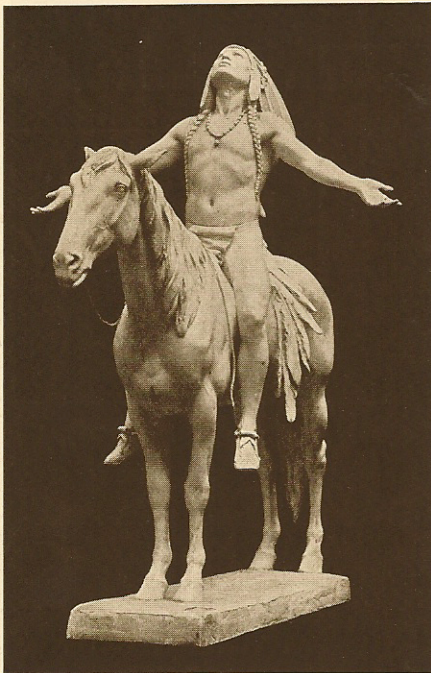
JOHN HANCOCK

No. 2885 Height, 2 ft. 10. in. . . . \$15.00  
Base, front to back, 9½ in.; width, 9 in.



THE SCOUT\*

Original in bronze, heroic size, at Panama-Pacific Exposition  
No. 2904. Height, 3 ft. 2 in. . . . \$50.00



THE APPEAL to the GREAT SPIRIT\*

Original in bronze, heroic size, at Museum of Fine Arts, Boston

No. 2908 Height, 3 ft. . . . \$50.00  
2908A Height, 1ft. 9 in. . . . 25.00



ABRAHAM LINCOLN

No. 2912 Height, 3ft. 2¼ in. . . . \$25.00  
Base, front to back, 10 in.; width, 9 in.

\*Pedestal for same similar to No. 2872A on Page 3, \$20.00



C A P R O N I C A S T S



CAYUSE AT SPRING \*

No. 2913 Height, 3 ft. 3 in. . . . \$50.00



CHIEF WASHAKIE. SHOSHONE TRIBE \*

No. 2915 Height, 3 ft. 4 in. . . . \$50.00



ON THE WARPATH. SIOUX TRIBE \*

No. 2916 Height, 3 ft. 8 in. . . . \$50.00



PRETTY EAGLE. CROWE TRIBE \*

No. 2917 Height, 3 ft. 10 in. . . . \$50.00

\*Pedestal for same similar to No. 2872A on page 3, \$20.00





CHIEF ANTELOPE\*

No. 2918 Height, 2 ft. 10 in. . . . . \$50.00



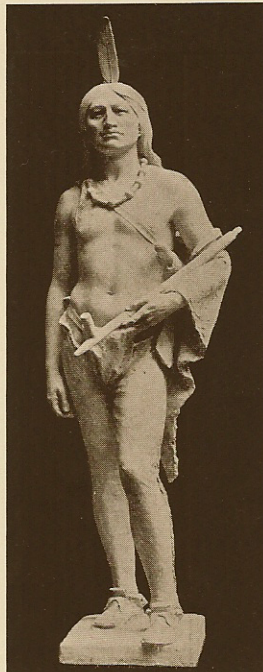
STANDING ELK  
Ute Tribe

No. 2919 Height, 2 ft. 6 in.  
\$20.00  
Base, front to back, 10 in.  
width, 7 in.



CHIEF JOSEPH  
Nez Percéz Tribe

No. 2920 Height, 2 ft. 2 in.  
\$15.00  
Base, front to back, 6 $\frac{3}{4}$  in.  
width, 6 $\frac{3}{4}$  in.



MASSASOIT

No. 2921 Height, 6 ft. \$100.00  
2922 Height, 3 ft. 4 in., 30.00  
Base, front to back, 11 in.  
width, 8 $\frac{1}{2}$  in.



PEACE PIPE

No. 2925 Height, 3 ft. . \$30.00  
Base, front to back, 8 $\frac{3}{4}$  in.; width 8 $\frac{1}{2}$  in.

Pedestal for same similar to No. 2872A on page 3, \$20.00





SACAJAWEA  
the Indian woman,  
who led  
Lewis and Clark  
on their  
expedition to the  
Pacific Ocean



REAR VIEW OF Nos. 2923, 2924  
showing papoose

No.  
2923 Height, 6 ft. . . . \$100.00  
2924 Height, 3 ft. 1 in. . . . 30.00  
Base, front to back, 11½ in.; width, 8¼ in.



INDIAN ARCHER

No. 2926 Height, 3 ft. . . . \$30.00  
Base, front to back, 9¼ in.; width, 9 in.

Liberal discount to schools and other educational institutions



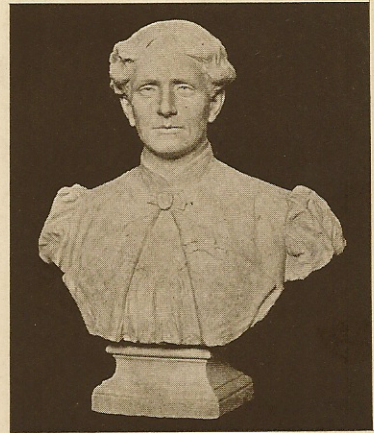
C A P R O N I C A S T S



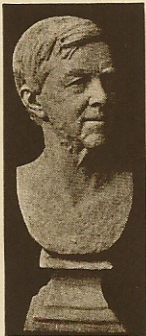
JULIA WARD HOWE  
No. 5503  
Height, 2 ft. 8 in. . \$20.00



HARRIET BEECHER STOWE  
No. 5504  
Height, 2 ft. 8 in. . \$20.00



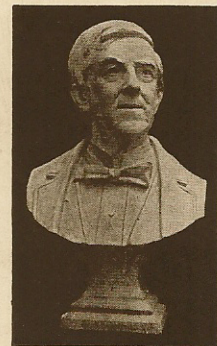
FRANCES E. WILLARD  
No. 5505  
Height, 2 ft. 8 in. . \$20.00



HOLMES  
No. 5458  
Height, 1 ft. 11 in., \$6.00



JULIA WARD HOWE  
Original in marble in Museum of Fine Arts, Boston  
No. 10083 38x 29 in. . \$20.00



HOLMES  
No. 5459  
Height, 2 ft., \$8.00

Liberal discount to schools and other educational institutions