

CAPRONI COLLECTION

 SCULPTURE REPRODUCTIONS 

Visit us on the web at capronicollection.com

As this digital catalog is not copyrighted, please reference the Caproni Collection as the source if you copy or use this historical material.

Digitized by Caproni Collection

CAPRONI CASTS



Supplement for 1914

Supplement for 1914
to
Catalogue of Caproni Casts

*Reproductions
From Antique, Medieval
and Modern Sculpture*



"CHIEF WASHAKIE"—SHOSHONEE TRIBE
By Cyrus E. Dallin Copyrighted
No. 2915—Height 3 ft. 4 in.—\$50.00

Made and for Sale by

P. P. Caproni and Brother

1914-1920 Washington Street
Boston, Massachusetts, U. S. A.

Copyright, 1914, by P. P. Caproni and Brother, Incorporated. All Rights Reserved.

Caproni Casts for School Decoration

Large Selection for Class Gifts

Our Special Catalogue of Subjects for the Decoration of Schools, Libraries and Homes contains 112 pages, 1200 illustrations of sculpture of different periods. One copy is sent free of charge to teachers on condition that they give the name of their school when making application. Otherwise, the price of this catalogue is fifty cents per copy.

Supplement for 1914

New Subjects added to Caproni Collection

In the following pages of this Supplement are shown:

Casts of models which we purchased during our recent visit to the Museums of Europe.

Reproductions of the works of well-known sculptors who have given to us the *exclusive* right to make and sell these casts.

New historical subjects, including the first of a contemplated series of busts of women famous in the history of our country.

Subjects for Drawing and Modeling Classes

Our Special Catalogue of casts of parts of the Body, Fruits, Flowers, Masques, Ornaments, Architectural Details, Anatomical Studies and Torsos is furnished free of charge to Supervisors of Art. To others, the price of this catalogue is fifty cents per copy.



18



19



20



21

Our Special Catalogue of Subjects for the Decoration of Schools, Libraries and Homes is sent free of charge to teachers. Give name of school when applying for free catalogue.



218



583

Reliefs and Statues

| No. | Description | Location | Size | Price |
|-----|---------------------------|---------------|--------------------|---------|
| 18 | Archer marching to right. | In the Louvre | 79 x 27 in. | \$25.00 |
| 19 | Archer marching to left. | In the Louvre | 79 x 27 in. | 25.00 |
| 20 | Archer marching to right. | In the Louvre | 79 x 27 in. | 25.00 |
| 21 | Archer marching to left. | In the Louvre | 79 x 27 in. | 25.00 |
| 218 | Sphinx; base 10½ x 35 in. | In the Louvre | Height 2 ft. 1 in. | 30.00 |
| 583 | Mars, Ludovisi. | In Florence | Height 5 ft. 3 in. | 150.00 |

Liberal discount to schools and other educational institutions.



584



585



2527



2528



2529

Statues

| No. | Description | Height. | Price. |
|------|--|-------------|---------|
| 584 | Esquiline Venus. In Rome . . . | 5 ft. 2 in. | \$60.00 |
| 585 | Clio. In the Berlin Museum . . . | 5 ft. | 50.00 |
| 2527 | Hebe. By Canova | 5 ft. 6 in. | 60.00 |
| 2528 | Giuliano de Medici. By Michelangelo. In Florence | 6 ft. | 200.00 |
| 2529 | Lorenzo de Medici. By Michelangelo. In Florence | 6 ft. | 200.00 |

For reduced sizes of Nos. 2528 and 2529, see our Special Catalogue for the Decoration of Schools, Libraries and Homes.

Liberal discount to schools and other educational institutions.



2530



2530A



2908



2914

Statues

| No. | Description | Height | Price. |
|-------|--|-------------|----------|
| 2530 | The Three Graces with pedestal. From the monument of Henry II. By Germain Pilon. In the Louvre. The pedestal is by Dominique Florentin | 8 ft. | \$200.00 |
| 2530A | The Three Graces. The same as No. 2530, with Urn as in the original | 9 ft. 9 in. | 215.00 |
| 2908 | The Appeal to the Great Spirit. By Cyrus E. Dallin. Copyrighted. Museum of Fine Arts, Boston | 3 ft. | 50.00 |
| 2914 | Cayuse at Spring. By Cyrus E. Dallin. Copyrighted. | 3 ft. 3 in. | 50.00 |

(For other subjects by Cyrus E. Dallin and pedestals for Nos. 2908 and 2914, see our Special Catalogue for Schools, Libraries and Homes.)

Liberal discount to schools and other educational institutions.



2909



2910



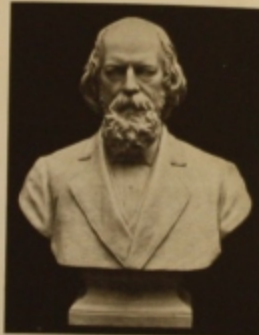
2911



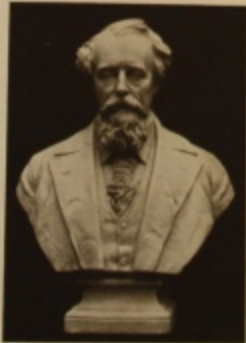
2912



2914



5391



5392

| No. | Statues and Busts | Height. | Price. |
|------|--|--------------|---------|
| 2909 | Blackhawk. By Lorado Taft. Copyrighted. Reduction of the original at the Rock River near Oregon, Ill. | 4 ft. | \$25.00 |
| 2910 | Christopher Columbus. By Lorado Taft. Copyrighted. Reduction of the original on the Columbus Fountain, Washington, D.C. | 3 ft. 11 in. | 25.00 |
| 2911 | George Washington. By Lorado Taft. Copyrighted. Reduction of the original at University of Washington, Seattle, Wash. | 4 ft. | 25.00 |
| 2912 | Abraham Lincoln. By Cyrus E. Dallin. Copyrighted. | 3 ft. 2½ in. | 25.00 |
| 2914 | St. George. Reduction of No. 2502. (See our Special Catalogue for Schools, Libraries and Homes for original size of this statue). | 3 ft. 4 in. | 30.00 |
| 5391 | Alfred Tennyson. Copyrighted. | 2 ft. 8 in. | 15.00 |
| 5392 | Charles Dickens. Copyrighted. | 2 ft. 8 in. | 15.00 |

Liberal discount to schools and other educational institutions.



5502



5503



5504



5505



7764



7766



7765

Busts and Reliefs

| No. | Busts and Reliefs | Height. | Price. |
|------|--|--------------|---------|
| 5502 | King Edward VII. By W. Pierce Roberts. Copyrighted. | 2 ft. 8 in. | \$15.00 |
| 5503 | Julia Ward Howe. By Cyrus E. Dallin. Copyrighted. | 2 ft. 8 in. | 20.00 |
| 5504 | Harriet Beecher Stowe. By Cyrus E. Dallin. Copyrighted. | 2 ft. 8 in. | 20.00 |
| 5505 | Frances E. Willard. By Cyrus E. Dallin. Copyrighted. | 2 ft. 8 in. | 20.00 |
| 7764 | Apollo in Chariot. In the Louvre. | 7½ x 19½ in. | 2.00 |
| 7765 | Western Frieze of the Parthenon. | 17 x 52 in. | 6.00 |

Reduction of Slabs II and X connected in one panel.

(For original sizes and other reductions, see our Special Catalogue for Schools, Libraries and Homes.)

7766 King attacking Lion. In the Theatre of Dionysius, Athens. 7 x 11½ in. \$1.00

Liberal discount to schools and other educational institutions.



8350, 9300, 9400, 9595



8351, 9302, 9597



8352, *9305, 9599



8353, *9306, 9600



8354, 9303, 9598



8355, 9301, 9401, 9596



8356, *9307



8357, *9308



8358, *9309

Cantoria Frieze

In Ten Panels

By Luca Della Robbia

A frieze of boys and girls singing and playing on instruments. From the Cantoria, in the Museum of Santa Maria del Fiore, Florence, as follows:

| No. | ORIGINAL SIZE | Size. | Price. |
|------|------------------------------|-------------|---------|
| 8350 | Boys singing from Book | 42 x 26 in. | \$10.00 |
| 8351 | Boys playing Trumpets | 42 x 38 in. | 12.00 |
| 8352 | Girls playing Lyres | 42 x 38 in. | 12.00 |
| 8353 | Girls playing Lutes | 42 x 38 in. | 12.00 |
| 8354 | Boys playing Drums | 42 x 38 in. | 12.00 |
| 8355 | Boys singing from Scroll | 42 x 26 in. | 10.00 |
| 8356 | Children dancing | 42 x 38 in. | 18.00 |
| 8357 | Children playing Instruments | 42 x 38 in. | 12.00 |
| 8358 | Children playing Tambourines | 42 x 38 in. | 12.00 |
| 8359 | Children playing Cymbals | 42 x 38 in. | 12.00 |

REDUCED SIZES OF THE ABOVE

| No. | Size. | Price. |
|------|--|--------|
| 9300 | Boys singing from Book 20 x 15 in. | \$4.00 |
| 9301 | Boys singing from Scroll 20 x 18 1/2 in. | 4.00 |
| 9302 | Boys playing Trumpets 20 x 18 1/2 in. | 6.00 |
| 9303 | Girls playing Lyres 20 x 18 1/2 in. | 6.00 |
| 9304 | Girls playing Lutes 20 x 18 1/2 in. | 6.00 |
| 9305 | Boys playing Drums 20 x 18 1/2 in. | 6.00 |
| 9306 | Girls playing on Lutes 20 x 18 1/2 in. | 6.00 |
| 9307 | Children Dancing 20 x 18 1/2 in. | 6.00 |

* New reductions.

With these the series of 20-inch reductions of the Cantoria Frieze is complete.

If any one tells a school he will supply it with casts of another make "better than or as good as Caproni Casts," he has a reason, that is, larger profits for himself. If any one tells a school he will supply it with Caproni Casts be sure that they are Caproni Casts.

Liberal discount to schools and other educational institutions.



8359, 9304

| | | | |
|------|---------------------------------|--------------------|------|
| 9308 | Children playing on Instruments | 20 x 18 1/2 in. | 6.00 |
| 9309 | Children playing on Tambourines | 20 x 18 1/2 in. | 6.00 |
| 9400 | Boys singing from Book | 13 1/2 x 9 1/2 in. | 2.50 |
| 9401 | Boys singing from Scroll | 10 1/2 x 7 in. | 2.50 |
| 9595 | Boys singing from Book | 10 1/2 x 7 in. | 1.50 |
| 9596 | Boys singing from Scroll | 10 1/2 x 7 in. | 1.50 |
| 9597 | Boys playing Trumpets | 10 1/2 x 10 in. | 1.50 |
| 9598 | Boys playing Drums | 10 1/2 x 10 in. | 1.50 |
| 9599 | Girls playing Lyres | 10 1/2 x 10 in. | 1.50 |
| 9600 | Girls playing Lutes | 10 1/2 x 10 in. | 1.50 |



10077, 10078



10079, 10080

Our Special Catalogue of Subjects for the Decoration of Schools, Libraries and Homes is furnished free of charge to Schools. Teachers must give name of school in making application for free catalogue. The price of this catalogue to others is fifty cents per copy.



10081



10082

Lincoln's Gettysburg Speech. Bronze Tablet mounted on green marble back.

| | | | |
|---|----------|-----------------|-------|
| 26 x 34 in. | \$100.00 | 24 x 19 in. | 50.00 |
| Bronze Tablet without green marble back. | | | |
| 22 x 28 in. | \$75.00 | 21 x 15 1/2 in. | 40.00 |

The prices of this tablet are net. No discount is allowed.

Reliefs

| No. | Description | Size. | Price. |
|--|---|---------------------|---------|
| 10077 | Washington at Trenton. Copyrighted | 61 1/2 x 46 1/2 in. | \$40.00 |
| 10078 | Washington at Trenton. Reduction of No. 10077 | 47 1/2 x 36 in. | 18.00 |
| 10079 | Lion of Lucerne. Copyrighted | 44 x 55 in. | 35.00 |
| 10080 | Lion of Lucerne. Reduction of No. 10079 | 32 x 38 in. | 20.00 |
| (For smaller sizes, see our Special Catalogue for Schools, Libraries and Homes.) | | | |
| 10081 | Female Figure with Wreath. Attributed to Germain Pilon. In the Louvre | 70 1/2 x 19 in. | 25.00 |
| 10082 | Female Figure with Wreath. Attributed to Germain Pilon. In the Louvre | 70 1/2 x 19 in. | 25.00 |

In ordering state whether casts are desired in the white or ivory finish. We advise the ivory finish when casts are intended for decorative purposes. If finish is not specified, we use our judgment in filling orders.

How Some of Caproni Casts Have Been Secured for Schools

A few accounts selected from many received giving interesting methods employed by schools to raise money for decoration

Unveil Statue Memorial to South Boston, Mass., Teacher

(Extract from the Boston Post)



Joan of Arc. By Chaps

A statue of Joan of Arc was unveiled in the hall of the Capen Primary School, East Sixth Street, South Boston, yesterday afternoon, as a memorial to Miss Laura J. Gerry, who died last August after a service of fifty-two years as a teacher in the South Boston schools.

John F. Dwight, master of the Hart School, presided at the exercises. The hall was filled with teachers, many of whom had worked with Miss Gerry for many years, with former pupils and Assistant Superintendent of Schools Frank V. Thompson.

Miss Gerry was appointed a teacher in the old Hawes School on Broadway in 1857 and took charge of the last primary grade when the Capen School was opened in 1871. She taught continuously at that school until June, 1909, when she was retired with a pension.

Miss Gerry willed a sum of money to be used for a memorial for the room she had occupied for so many years and where she had given instruction to more than 2500 pupils.

The executors of the will named a committee of three teachers who had worked with Miss Gerry for many years, and they selected the statue of Joan of Arc, the original of which stands in the Louvre.



Eastern High School

Detroit, Michigan

Messrs. P. P. Caproni & Bro.,

1920 Washington Street, Boston, Mass.

Gentlemen: To my thinking, one of the most important influences that we can bring to bear upon the pupils of a High School is that of *first-rate reproductions of noble works of art*. In our school we have gone very slowly in this matter, but we feel that for this reason the choice has been exercised all the more carefully. Recently we purchased several slabs of the Elgin Marbles. These have been placed over the entrance to a corridor, which gives just the temple-like effect needed to bring out the full beauty of the beautiful figures portrayed by Phidias.

The money for these slabs was obtained from a lunch counter which is carried on successfully through the unselfish exertions of several teachers and boys belonging to the Athletic Association. There is no hired service in connection with this lunch counter, except for a woman to cook and wash dishes. The splendid decoration we recently purchased is a good expression of the fine spirit of co-operation and devotion which shows itself in the admirable enterprise of our lunch counter.

A school is composed, if it is a genuine school, of at least three things — scholarship, taste and real leadership. A spirit of development must animate each one of these, and taste will be shown by the gradual accumulation of beautiful decorations.

Very truly yours,

(Signed) J. REMSEN BISHOP,
Principal.



Urania, Muse of Astronomy

Woodward High School Cincinnati, Ohio

P. P. Caproni & Bro., Boston, Mass.

Gentlemen: Our means of securing funds for the decoration of the school by purchase of pictures and statuary can be readily understood by reading the enclosed copy of the constitution of the Art League of the school under whose direction all purchases are made. Membership is voluntary. Our receipts each month are about \$40 to \$45.

Yours respectfully,

(Signed) ARTHUR O. JONES,
President of Art League.

Art League Constitution

Article 1. The name of the society shall be "The Art League of Woodward High School."

Art. 2. The object of the League is to arouse in the pupils an interest and a pride in making the school beautiful and to place upon the walls and in the halls of the building such objects of art as shall be of permanent value.

Art. 3. The affairs of the League shall be administered by an Executive Board to be composed of the Principal of the school, ten teachers whom he shall appoint, and one student representative elected by each of the rooms, except that in rooms having forty or more pupils two representatives shall be elected.

Art. 4. The student representative shall collect the dues from the members of the League in that room and pay them to the financial secretary before the fifteenth of the month.

Art. 5. The Executive Board shall elect its own president, vice-president, secretary and two financial secretaries, one for the boys and one for the girls.

Art. 6. The secretary shall keep the minutes of the meetings of the Board.

Art. 7. The financial secretaries shall keep an accurate and detailed account of all moneys received and expended.

Art. 8. There shall be two classes of members:

First. Active,—pupils and teachers of the school who pay five cents for each school month.
Second. Associate,—former pupils and friends of "Woodward" who pay one dollar or more per year.

Art. 9. A two-thirds vote of the Board shall be necessary for the selection of any work of art.

Art. 10. Dues shall be collected for nine months, September to May inclusive.



Monument of Heges

Central High School, Philadelphia, Pa.

Messrs. P. P. Caproni & Bro., Boston, Mass.

Dear Sirs: Our collection of casts has been derived from various sources.

Part of the money appropriated for the maintenance of the Art Department is spent for casts, some for drawing and others for decoration.

Certain classes or sections have been interested enough to have the members contribute one or two cents a week for a term or a year, sometimes producing a considerable sum.

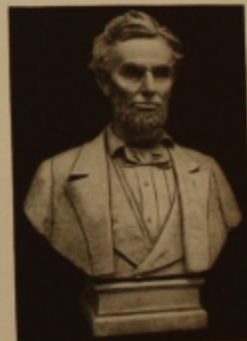
Graduating classes have almost annually, for the past ten or eleven years, contributed a cast or a print as a class memorial; and the school magazine closes some years with a surplus which is sometimes spent in a banquet to the staff, but occasionally goes to a bit of school decoration.

Some of the large casts are memorials to members of the faculty or to students. On the occasion of the death of one or the other, the whole school in the case of a teacher, or a class in the case of a student, spontaneously contributes, "for flowers," a sum which often in a school of 2200 amounts to over a hundred dollars. Out of this a reasonable sum is spent for the more perishable tribute, and the remainder put into a beautiful and lasting memorial, with a suitable inscription on the pedestal or on a small tablet.

In these various ways, and sometimes by individual gifts, we have acquired about ten full size, about fifteen medium size and many smaller casts, and several hundred prints.

Very sincerely yours,

(Signed) WILLIAM F. GRAY.

Lincoln
Copyrighted

Washington

Hammond, Ind.

P. P. Caproni & Bro., Boston, Mass.

Dear Sirs: If telling how we earned the money to purchase our Washington and Lincoln busts will be an inspiration to others, I am glad to relate our experience.

Higher grades had had candy sales, but my pupils being only first grade, and strong in music, I decided to give a musical entertainment instead. Given permission by the principal and music supervisor I secured Charles Gabriel's juvenile cantata "Dream of Fairyland"; and being allowed my music time I taught and practiced at that time, and at recesses, the music of the cantata.

We practiced for six weeks, then we were ready, every child in the room taking part in the entertainment, also a few smaller children and two older pupils took part.

We made sprites, one-piece dresses of red crape paper (for the smaller children). Good fairies (girls) wore white dresses trimmed with Xmas tree tinsel and evil fairies, (boys) wore black, one piece, capes and horned hoods.

A short time before the entertainment articles were inserted in the papers predicting time, place and admission price of the cantata, together with its synopsis, cast of characters and the statement that our hope was to net a sufficient sum to purchase a Washington bust for the Washington School, and Washington School children who wished to do so, sold the tickets, being given a ticket for every ten sold.

After the entertainment we found we had cleared \$90, having taken in \$71; thus we had earned sufficient for not only a splendid Washington bust but an equally splendid Lincoln bust and other things we had been desiring as well.

Yours very truly,

(Signed) EMMA S. QUATLE,

First Grade Teacher, Washington School.



Diana of Versailles

The Public Schools

Miles City, Montana

P. P. Caproni & Bro., Boston, Mass.

Gentlemen: In order to raise money for our school decorations, I have for six or eight years planned a rather large school entertainment about the middle of February in which from 125 to 175 pupils have taken part. We have this large number so as to avoid overworking a few pupils. The affair has always seemed to stimulate an interest in school on the part of the parents which more than offset any slight interference with regular school work. We charge popular prices, give an afternoon "matinee" for the special benefit of the school children and in the evening always have a packed house. The secret of this is in the fact that so many children take part that simply the parents and friends of the pupils taking part will almost fill a good-sized opera house. We have the entertainment in the largest opera house we can get. The past year we gave two operettas, one for primary grades and one for grammar grades, and the music was worked up by the special music instructor in connection with her regular instruction and some extra practice out of school hours. We raised almost \$300, and expect to make it fifty per cent more this coming school year.

Very truly yours,

(Signed) J. A. BURGER.



Slabs A. I and II of the Triumphal Entry of Alexander into Babylon. By Thorwaldsen.
Made in 22 Slabs. Nos. A to XXI.

Messrs. P. P. Caproni & Bro.,

1920 Washington Street, Boston, Mass.

Gentlemen: To tell how we raised money for the purchase of school room decorations is almost like reviving ancient history, for it was quite a number of years ago that we began. The first effort was in response to the appeal of our supervisor of drawing. I suggested to the pupils of the highest room that we do something for the decoration of the room and asked them to go short on peanuts and tutti frutti gum (it was before the days of spearmint) and contribute their savings for art's sake. The response was gratifying and the resulting contribution was turned over to the drawing supervisor to make the purchase for us. She was so gratified, for we were the first school in Manchester to respond to her appeal, that she nearly doubled the amount and purchased for us one of the panels of the Cantoria frieze by Luca della Robbia from your firm.

It was soon after that that we had a parents' afternoon and the pupils read and recited opinions, mostly of others, regarding the value of school room decorations and the next day canvassed the school district for contributions from the parents and others for the purchase of pictures and casts. One gentleman of wealth who had two grandchildren in school was successfully approached for enough to buy a picture for each of the children to be given in their names.

After that we had entertainments and raised quite a considerable sum in that way. By this time we had the rooms pretty well decorated, and since then we have depended upon the graduating classes which leave behind them one or more casts which are now on the walls. A number of years ago we started on the purchase of the Alexander frieze, each class contributing one or two slabs, according to the size of the classes and the prices of the slabs. These slabs we have bought from you, except one year, when we were beguiled into buying from another firm, but we were sorry, for the piece is perceptibly inferior to the others.

Respectfully yours,

(Signed) WILLIAM H. HUSE,
Principal of Hallsville School.

Tenth District School No. 4
Milwaukee, Wisconsin

P. P. Caproni & Bro.

Dear Sirs: We are much interested in school decorations and should thank you for your special school catalogue. We have no other but Caproni casts in our building.

Very truly yours,

(Signed) EMMA J. LUEBKE,
Principal.



South Side Library, Milwaukee, Wisconsin
Decorated with Caproni Casts

