

# CAPRONI COLLECTION


 SCULPTURE REPRODUCTIONS 

Visit us on the web at [capronicollection.com](http://capronicollection.com)

As this digital catalog is not copyrighted, please reference the Caproni Collection as the source if you copy or use this historical material.

Digitized by Caproni Collection

# Art for Schools

A SPECIAL LIST OF CASTS  
RECOMMENDED FOR THE  
DECORATION OF SCHOOL  
ROOMS; SELECTED FROM  
THE CAPRONI COLLEC-  
TION OF REPRODUCTIONS  
FROM MASTERPIECES OF  
SCULPTURE 

**P. P. CAPRONI & BROTHER, BOSTON**

*Edition of 1902*

*Price 25 Cents*

**HIS CATALOGUE CONTAINS ONLY A SELECTION OF SUBJECTS SUITABLE FOR SCHOOL DECORATION. OUR GENERAL CATALOGUE OF 300 PAGES BOUND IN CLOTH, AND CONTAINING 1934 ILLUSTRATIONS WILL BE SENT POSTPAID ON RECEIPT OF ONE DOLLAR.**

### ILLUSTRATIONS IN GENERAL CATALOGUE

- 15 Views of Galleries.
- 7 Subjects of Assyrian Sculpture.
- 13 Subjects of Egyptian Sculpture.
- 79 Statues. Greek and Roman.
- 63 Statuettes of Different Periods. (Tanagra Figurines, etc.)
- 12 Statuettes. Herculaneum and Pompeian.
- 71 Statues. Renaissance and Modern.
- 17 Torsi. Antique and from nature.
- 14 Gargoyles, Vases, etc.
- 63 Busts. Antique.
- 47 Busts. Renaissance.
- 130 Busts. Modern.
- 12 Pedestals for supporting busts and statues.
- 25 Brackets for supporting busts and statues.
- 52 Reliefs from the Parthenon Frieze.
- 39 Reliefs. Antique.
- 105 Reliefs. Renaissance.
- 145 Reliefs. Modern.
- 80 Medallions from the Medici Collection.
- 20 Medallions. Modern.
- 16 Subjects of Armor.
- 28 Animals. By Barye.
- 36 Animals. By various artists.
- 51 Heads of Animals.
- 37 Heads in relief from Trajan's Column.
- 120 Masques of Different Periods.
- 171 Studies of Parts of the Body, Hands, Feet, Arms, Legs, etc.
- 95 Studies of Leaves, Fruits and Flowers.
- 358 Studies of Historical Ornament and Architectural Details.
- 14 Studies of Anatomy and Vases.

A LIBERAL DISCOUNT TO EDUCATIONAL INSTITUTIONS ACCORDING TO AMOUNT OF PURCHASE.

## ART FOR SCHOOLS

A SPECIAL LIST OF CASTS RECOMMENDED FOR THE DECORATION OF SCHOOL-ROOMS; SELECTED FROM THE CAPRONI COLLECTION OF REPRODUCTIONS FROM MASTERPIECES OF SCULPTURE



P. P. CAPRONI & BROTHER  
1914-1920 Washington Street 8-12 Newcomb Street  
BOSTON

EDITION OF 1902 PRICE 25 CENTS



## INTRODUCTION

**T**HE modern movement for the decoration of schoolrooms, with reliefs, busts, statues, and pictures, as object lessons in art education, has become too deeply rooted in the minds of the people to be eradicated. It is an idea that has come to stay, and it is growing more powerful with advancing days.

The Greek child of centuries ago was taught by observing the beautiful works of art about him, and so was led into a grander and nobler life. So should it be with the child of to-day. If he is surrounded with objects which excite his love for the beautiful and noble, in just such a degree is he elevated and ennobled in character.

The question of the quality of the reproductions which are to be placed in the schools is of the greatest importance. In an original art work of merit there is a subtleness of treatment, a certain feeling, which if lost in reproducing, places the reproduction outside of what can be classed as a work of art. A poor statue or bust is worse than none at all; and a poor reproduction of a really good statue is almost worthless.

We are able to present before the eyes of the American school children, at a comparatively small cost, casts which convey to the mind all the delicate feeling which is inspired in the mind of him who is privileged to travel abroad and see those wonderful creations in their own homes. All of our casts are from imported models, made directly from the originals, which is the secret of their excellence, apart from the perfection of workmanship in reproduction.

It is our aim to increase the appreciation of the best in art, among all people. To educate the child in this line is the surest way to produce this result. A poor reproduction of a work of art should be avoided in the equipment of a school, just as much as poor literature. There are inferior reproductions offered for sale by some dealers, many of them under the name of "Caproni Casts," which are merely re-casts and not made from imported models. Every piece of our statuary has a brass label bearing our name and address; casts without this label are not of our make.

P. P. CAPRONI AND BROTHER.

**P**RICES and information regarding any statue found or not found in the list will be cheerfully furnished.  
Agents for C. H. Chavant's Composite Clay, a fine substitute for Modelling Wax.

Modelling Clay and Plaster of the finest quality for sale.  
Marbles cleansed and repaired, packed and unpacked.  
Casts taken from the living or dead; also, hands, feet, etc.  
Statues carefully packed for transportation, either by freight or express.

---

---

*A liberal discount to Educational Institutions according to amount of purchase.*

---

---

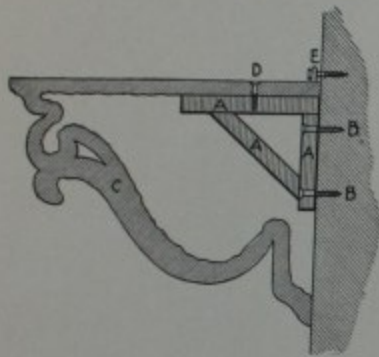
## HOW TO CLEANSE CASTS.

Plaster Casts that are prepared with the ivory finish may be readily cleansed if soiled. Lukewarm water and a sponge or soft brush should be used. The use of soap is not recommended, as it is liable to leave a shining surface. Our experience has been that some of the washing powders—that known as "Pearline" is to be preferred—are the best for this purpose. The cast should be thoroughly rinsed with clear water after cleaning.

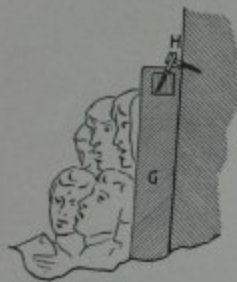
*Any information desired in regard to transportation charges cheerfully furnished.*

P. P. CAPRONI & BRO.

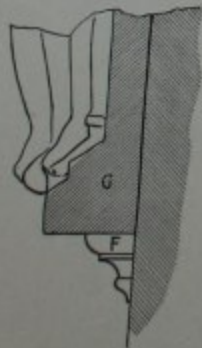
## OUR METHOD OF ATTACHING BRACKETS AND RELIEFS TO A WALL



- A. Wooden bracket, which is first fastened to the wall.
- B. Screws, used for attaching wooden bracket to wall.
- C. Section view of plaster bracket in position over wooden one.
- D. Screw, holding the two brackets together.



- E. Position of hooks at top of bracket, through which screws are placed.
- F. Wooden moulding, supporting relief. The moulding can either be nailed or screwed to the wall before placing the relief upon it.



- G. Section view of relief.
- H. Method of fastening the relief to wall by means of a screw-eye put down at an angle through the plaster into the wooden frame, which is inside of every large relief. Put an ordinary screw through the eye into the wall.

## FROM OUR CORRESPONDENTS.

*High School for Girls, Glasgow, Scotland.*

MESSRS. P. P. CAPRONI & BRO.

*Gentlemen:* I duly received your letter advising me that the casts I ordered from you had been shipped to my address and yesterday the same came to hand. All the casts I found to be in perfect condition and I desire to express to you my thanks for the manner in which you have carried out my order. The casts are beautiful works of art and they will be highly valued in this school. I particularly admire the Minerva. It will be a pleasure to me to order again from you if occasion arises and at all times strongly to recommend your firm when I have the opportunity to do so.

(Signed)

WILLIAM LOBBAN, *Classical Master.*

*Drexel Institute of Art and Industry, Philadelphia, Pa.*

MESSRS. P. P. CAPRONI & BRO.

*Gentlemen:* The casts arrived in good condition and their fine technique is much admired. It will be a great advertisement to you to have them here as such good work will commend itself to all. Several of the artists here have already asked your address. Send a catalogue to me the moment it is out as I hope to order more.

(Signed)

MRS. HANNAH J. CARTER, *Director Art Department.*

*The California School of Mechanic Arts, San Francisco, California.*

MESSRS. P. P. CAPRONI & BRO.

*Gentlemen:* The shipment of casts has arrived, all of them in good condition. We are pleased with them. Enclosed please find draft for full amount.

(Signed)

GEORGE A. MERRILL, *Principal.*

*The William Hayes Fogg Art Museum of Harvard University, Cambridge, Mass.*

MESSRS. P. P. CAPRONI & BRO.

*Gentlemen:* I have received your bill for casts and services rendered and have approved the same and sent it to the treasurer for payment. The mediaeval casts ought to arrive before long and then we shall require your services again. I thank you for the care with which you have done our work: I am sure it could not have been done better.

(Signed)

CHARLES H. MOORE, *Curator.*

*Pratt Institute, Brooklyn, N. Y.*

MESSRS. P. P. CAPRONI & BRO.

*Gentlemen:* Is your new catalogue ready? A person writes me from the Throop Polytechnic Institute at Pasadena, California, and asks if I will order about \$75 worth of casts. I believe you are furnishing the best casts in the country and I should prefer to place the order with you. The person wants the very best historic ornaments there are in the market for elementary students, the casts of apples, plums, etc., and perhaps a few of the best masks and heads; but the main collection should consist of the most useful ornaments.

(Signed)

W. S. PERRY, *Director Department of Art.*

*University of Wisconsin, Madison, Wis.*

MESSRS. P. P. CAPRONI & BRO.

*Gentlemen:* Kindly permit me to say that the casts which you forwarded to my address reached me in due time in most excellent order and give perfect satisfaction. I enclose to you herewith a draft in payment of the same.

(Signed)

BENJ. W. SNOW.

*The University of Chicago, Department of Public Speaking.*

MESSRS. P. P. CAPRONI & BRO.

*Gentlemen:* In the course of my lectures on literary interpretation which I deliver all over the country I take occasion to refer continually to the necessity of a general art training in connection with the study of literature. About a year ago I prepared a lecture for the high school students, in which I urged them to form an art league for the purpose of purchasing photographs, etchings, statuary, etc. This particular lecture is given gratis, and solely from my desire to stimulate art study in the high school. After these clubs are formed I am frequently called upon to recommend the firms who are selling the best examples of such art as would be useful in the schools. Heretofore I have refrained from recommending any particular firm or firms, for fear my motive would be misunderstood. As a result, I find the schools are in danger of making serious artistic blunders. I have determined, therefore, to take a definite stand in this matter, regardless of consequences.

Will you, therefore, be kind enough to send me all material that may help me to determine the nature of your publications? In the second place, I should like to know the discount you allow to schools. I am particularly anxious to know whether the schools may purchase your works from the local dealer at as low a price as they can be purchased directly from you.

In conclusion I beg to state that I have no purpose in this matter aside from my interest in art; that I desire no favors nor concessions. But I do wish to be in a position to recommend the best art works at the lowest rates.

(Signed)

S. H. CLARK.

*University School, Cleveland, Ohio.*

MESSRS. P. P. CAPRONI & BRO.

*Gentlemen:* The casts for our Art School arrived in good order. The casts surpass expectation; they are first class in every respect.

(Signed)

HERMANN MATZEN, *Principal.*

*Redstone, Montpelier, Vt.*

MESSRS. P. P. CAPRONI & BRO.

*Gentlemen:* Please find enclosed my check on New York for \$663.90. for payment of the enclosed bill. I desire to express to you my most sincere thanks for the very satisfactory way in which you have executed this order. Not a thing was broken or injured in the slightest degree. I can therefore commend, not only your art and workmanship, but also your care and skill in forwarding goods.

(Signed)

JOHN W. BURGESS.

*Prof. of Public Law, Columbia University, New York City.*

*S. Newcomb College, New Orleans, La.*

P. P. CAPRONI & BRO.

*Gentlemen:* The casts arrived in good condition and prove most excellent reproductions. Please return receipt for the enclosed money order.

(Signed)

G. ROBERTS.

### Twelve views of School Rooms, showing Decorations



ASSEMBLY HALL, GIRLS' HIGH SCHOOL, BOSTON.

This hall is decorated with a continuous frieze (Parthenon), twelve antique statues and several busts on brackets.



STAGE OF ASSEMBLY HALL, EAST BOSTON HIGH SCHOOL.



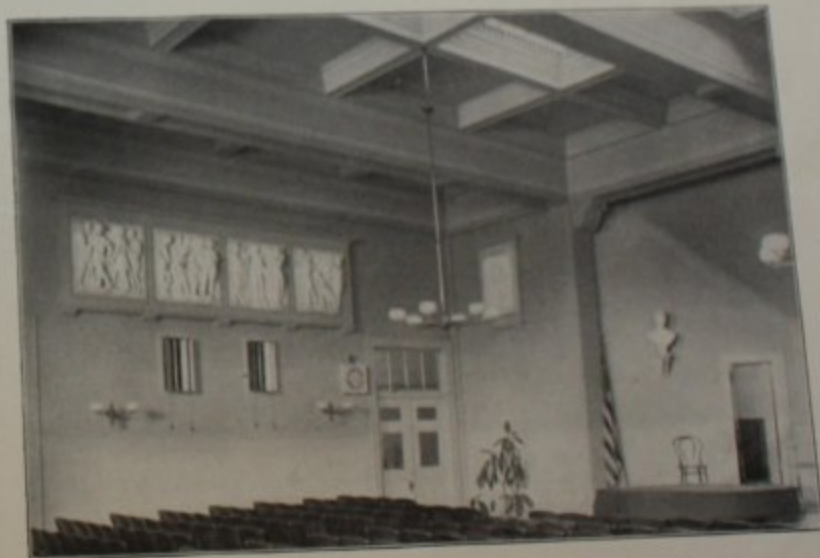
ASSEMBLY HALL, PIERCE GRAMMAR SCHOOL, BROOKLINE, MASS.



ASSEMBLY HALL, MARY HEMENWAY GRAMMAR SCHOOL, DORCHESTER, MASS.



ASSEMBLY HALL, BIGELOW GRAMMAR SCHOOL, NEWTON, MASS.



ASSEMBLY HALL, BIGELOW GRAMMAR SCHOOL, NEWTON, MASS.



CITY HIGH SCHOOL, ASHEVILLE, N. C.



GREEK ROOM, NEWTON HIGH SCHOOL, NEWTONVILLE, MASS.



CORRIDOR, PHILLIPS EXETER ACADEMY, EXETER, N. H.



GREEK ROOM, PHILLIPS EXETER ACADEMY, EXETER, N. H.





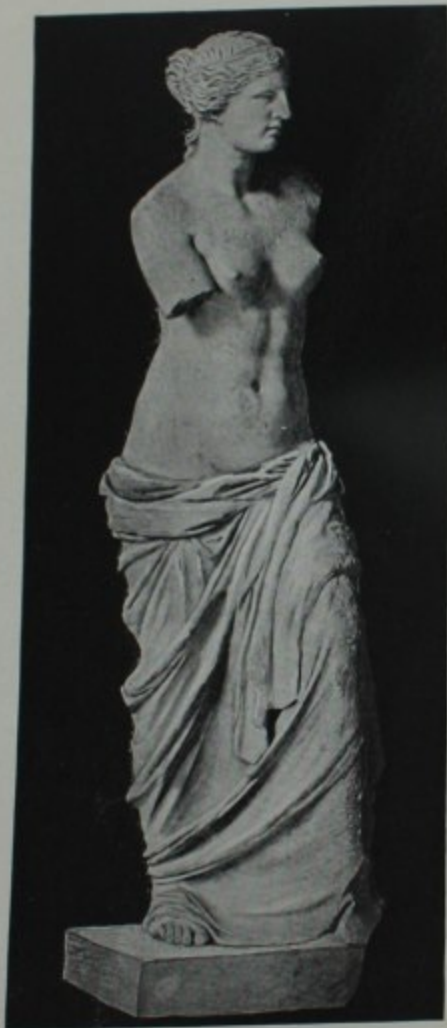
LATIN ROOM, PHILLIPS EXETER ACADEMY, EXETER, N. H.



ENGLISH ROOM, PHILLIPS EXETER ACADEMY, EXETER, N. H.



500, 766. FAUN OF PRAXITELES.



501, 767 to 771. VENUS OF MELOS.



503, 776. DIANA OF VERSAILLES.



505, 814, 824. VENUS GENETRIX.



502. NIOBE AND CHILD.



504, 777. APOLLO BELVEDERE.



507, 781, 782. MINERVA GIUSTINIANI.



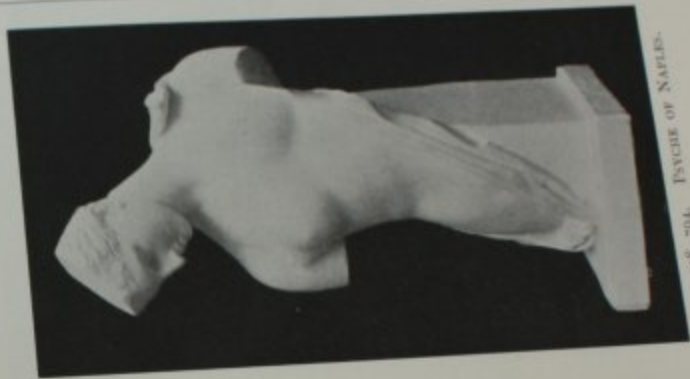
508, 817. PHEIDIPPIDES.



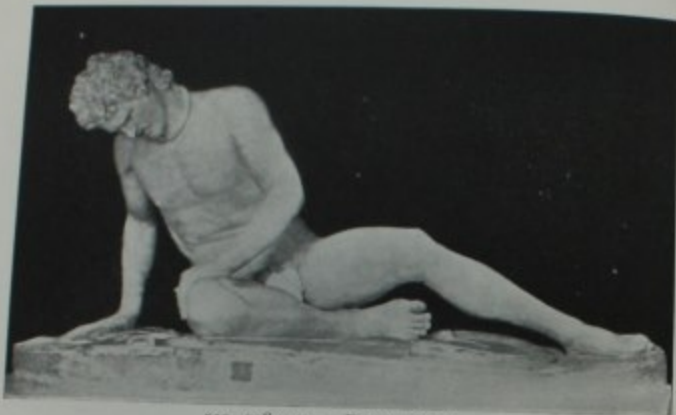
510, 785. HERMES OF PRAXITELLES.



511. DISCOBOLUS OF MYRON.



518, 794. PSYCHE OF NAPLES.



520, 798, 799. DYING GAUL.



523. ΛΑΟΚΟΩΝ.



525, 816. ΔΗΜΟΣΘΕΝΗΣ.



524, 779. ΣΟΦΟΚΛΗΣ.



519, 796, 813. ΔΙΑΝΑ ΟΥ ΓΑΒΙΩΝ.



529, 752, 753, 753A, 764.  
NIKE OF SAMOTHRAE.



526. BACCHANTE DANCING.



530, 756. WRESTLERS.



534. APOLLO CITHAREDEUS.



533. CLIQ, MUSE OF HISTORY.



532. THALIA, MUSE OF COMEDY.



535. NIOBIDA.



536, 750. POLYHYMNIA.



538. AMAZON.



541. NIKE OF PAROS.



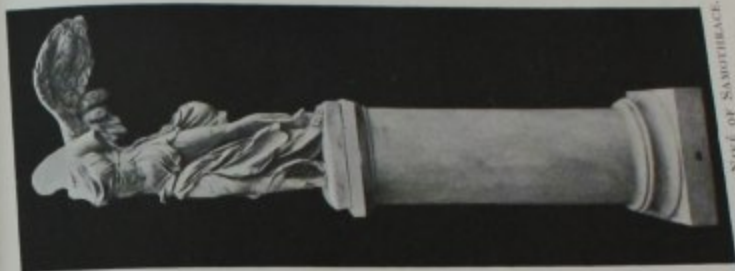
544. AUGUSTUS CAESAR.



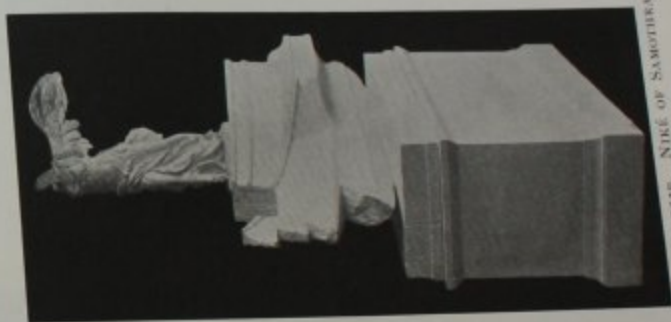
553-805. AESCULAPIUS.



546, 547. FATES, FROM THE PARTHENON.



764, 6637. NIKE OF SAMOTHRACE.



752, 752B, 753A, 753B. NIKE OF SAMOTHRACE.



752, 752A. NIKE OF SAMOTHRACE.



755. ARIADNE SLEEPING.



786. DISCOBOLUS OF MYRON.



803. AMAZON.



822. VENUS OF ARLES.



823. CERES.

2508. DAVID.  
By Verrocchio.2507. CUPID.  
By Michelangelo.2502, 2850. ST. GEORGE.  
By Donatello.2501, 2845, 2846.  
FLYING MERCURY.





2514. WASHINGTON.  
By *Houdon*.



2509 TOMB OF BISHOP FEDERIGHI.  
By *Luca della Robbia*.



2844. CUPID WITH BOW.



2806, 2807. DAVID.  
By *Mercil*.  
6662 PEDESTAL.



2828, 2834. MOSES.  
By *Michelangelo*.



2829, 2830, 2832.  
GIULIANO DE' MEDICI.



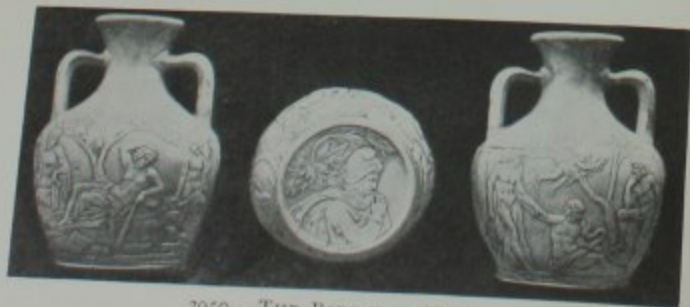
3800. LINCOLN DEVIL.



2831, 2833  
LORENZO DE' MEDICI.



2842. BARTOLOMEO COLLEONI.

2845, 2846.  
FLYING MERCURY.  
6653. PEDESTAL.2840. DAVID.  
By Michelangelo.2838.  
YOUNG ATHLETE.2803. MERCURY.  
By Pigalle.

3950. THE BARBARINI VASE.



3999. JUPITER.



4000. JUNO.



4001. JUNO.



4002. MINERVA.



4003, 4406. AJAX.



4004. AUGUSTUS CAESAR.



4009. VIRGIL.

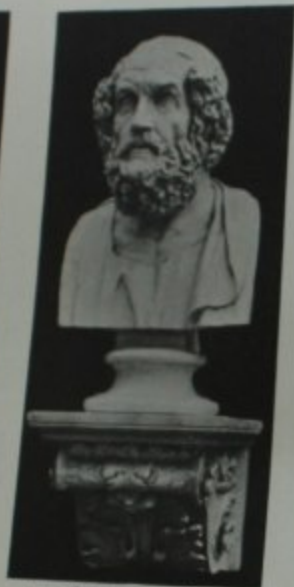


4010, 4655. MINERVA.

4014, 4403, 4404.  
APOLLO BELVEDERE.



4011, 4650, 4651. HERMES.  
6654 PEDESTAL.



4043, 4653, 4654. HOMER.  
6812. BRACKET.



4012, 4401, 4652. VENUS OF MELOS.  
6654. PEDESTAL.



4015, 4405. DIANA.



4016. PLATO.



4018, 4656. SOPHOCLES.



4019. DEMOSTHENES.



4024. PERICLES.



4027, 4402. CLYTIE.



4028. PSYCHE.



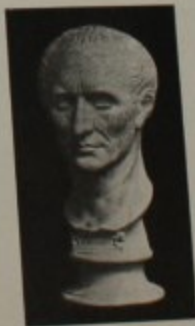
4030. DIANA OF GABII.



4032. MINERVA.



4033.  
YOUNG AUGUSTUS.



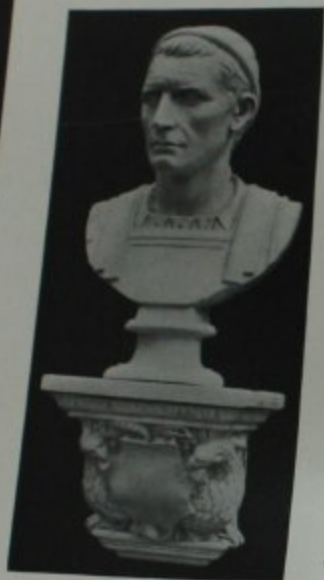
4035.  
JULIUS CAESAR.



4037.  
HYPNOS.



4039. CICERO.

4048. JULIUS CAESAR.  
6813. BRACKET.

4050, 4657. SOCRATES.



4052. SAPPHO.



4046. MARCUS AURELIUS.

5152. INFANT CHRIST.  
By Settignano.5153. YOUNG GIRL.  
By Della Robbia.5151. BOY.  
By Settignano.

5158. YOUNG GIRL.

5156. MEDICI YOUTH.  
By Donatello.5157. MADONNA.  
By Michelangelo.5158. MAIDEN OF LILLIE.  
By Donatello.5159. ST. JOHN.  
By Donatello.5160. YOUNG GIRL.  
By Donatello.5161. ST. JOHN.  
By Donatello.5162. BOY LAUGHING.  
By Donatello.5163. INFANT CHRIST.  
By Settignano.



5166. DANTE.

5168. PRINCESS OF URBINO.  
*By Settignano.*

5169. DANTE.



5171. UNKNOWN WOMAN.

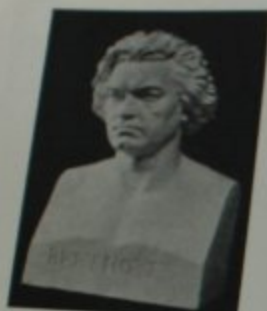
5173. MARIETTA STROZZI.  
*By Settignano.*5174. SLAVE.  
*By Michelangelo.*

5180. DANTE.

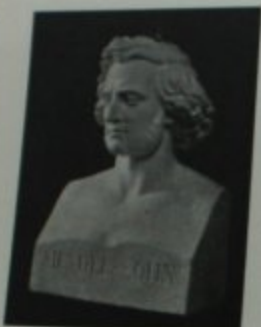
5193. DAVID.  
*By Michelangelo.*5194. ST. GEORGE.  
*By Donatello.*

5195. YOUNG FLORENTINE GIRL.

5448. LINCOLN.  
6815. BRACKET.5400. LONGFELLOW.  
6667. PEDESTAL.5447. WASHINGTON.  
6800. BRACKET.



5401. BEETHOVEN.



5402. MENDELSSOHN.



5406. MOZART.



45407. NAPOLEON.



5408, 5754. BYRON.



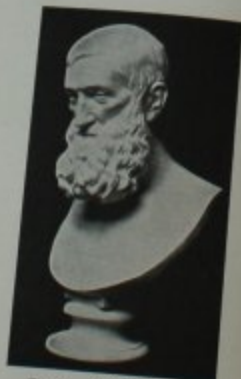
5409, 6007. BURNS.



5411. HENRY CLAY.



5414. JUDGE MARSHALL.



5415. BANCROFT.



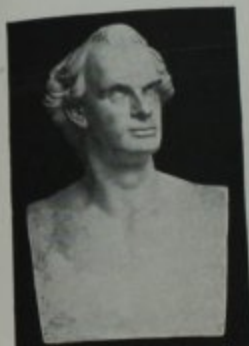
5416. JEFFERSON.



5417. SUMNER.



5419. HORACE MANN.



5422. HAWTHORNE.



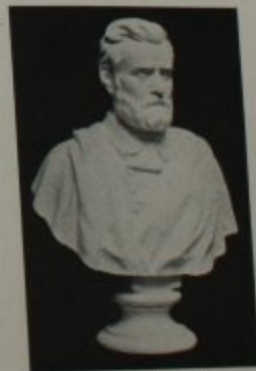
5423. JOHN QUINCY ADAMS.



5424. IRVING.



5425. HAMILTON.



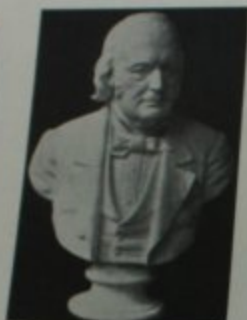
5427. GRANT.



5428. WENDELL PHILLIPS.



5429. WHITKER.



5431. AGASSIZ.



5433. JOHN ADAMS.



5434, 6015. FROEBEL.



5435, 5757, 6010. MILTON.



5436, 5758, 6011. SHAKESPEARE.



5437, 5759. SCOTT.



5438, 5760. NEWTON.



5439, 5756. JOHN LOCKE.



5440. COLUMBUS.



5441. PESTALOZZI.



5443. MENDELSSOHN.



5444. MOZART.



5445. BEETHOVEN.



5446. FRANKLIN.



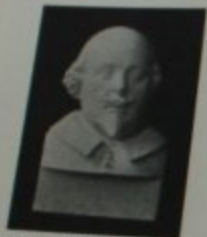
5450. LAFAYETTE.



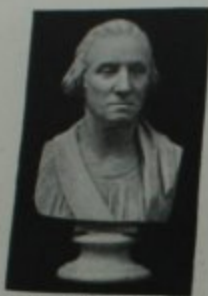
5451. BEETHOVEN.



5452. HUMBOLDT.



5456. SHAKESPEARE.



5457. WASHINGTON.



5459. HOLMES.



5460. EMERSON.



5461. QUEEN LOUISE.



5462. MME. RECAMIER.



5464. NAPOLEON.



5466. SCHILLER.



5467. GOETHE.



5751. BEETHOVEN.

5475. WASHINGTON.  
6651. PEDESTAL.

5752. MOZART.



5753. WAGNER.



5755. DICKENS.



6009. IRVING.



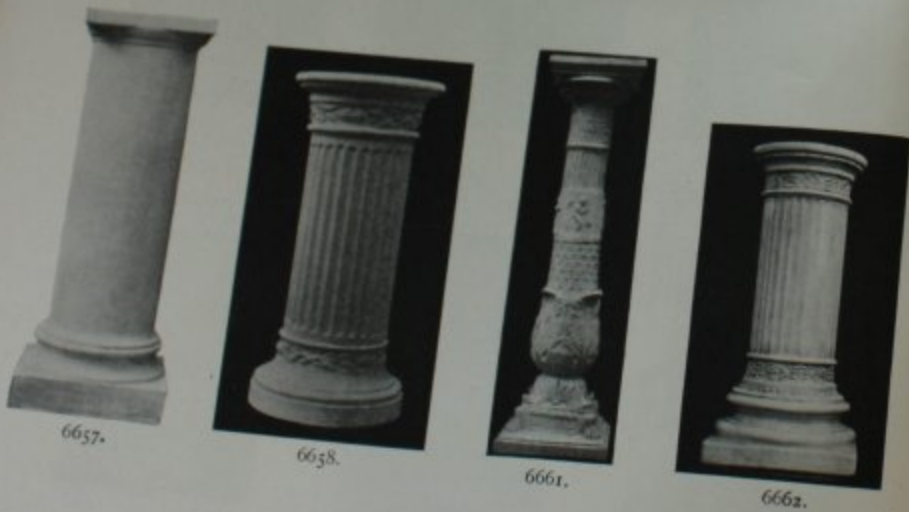
6012. SUMNER.



6017. WHITTIER.



PEDESTALS, FOR SUPPORTS OF BUSTS AND STATUES.



BRACKETS FOR SUPPORTS FOR BUSTS.





7000, 7758. WESTERN FRIEZE OF THE PARTHENON.



7001. SOUTHERN FRIEZE OF THE PARTHENON.



7002. NORTHERN FRIEZE OF THE PARTHENON.



7002. NORTHERN FRIEZE OF THE PARTHENON.



7003. EASTERN FRIEZE OF THE PARTHENON.



7051, 8051.  
ORPHEUS, EURYDICE AND HERMES.



7054, 8052.  
NIKÉ UNTYING SANDAL.



7055.  
NIKÉ DECORATING TROPHY.



7056. NIKÉS WITH BULL.



7061. APHRODITE, HELEN AND PARIS.



7063. BACCHIC PROCESSION.



7070. HOMER.



7074. CHARIOT RACE.



7075. CHARIOT RACE.



7076. CARYATIDES.



7078. VICTORY.



7082. ANTONINUS.



7079. BACCHANTE.



7080. BACCHANTES WITH BULL.



7085. BACCHANTES DANCING.



7089. EAGLE WITH CHAPLET OF OAK LEAVES.



7092. MONUMENT OF HEGESO.



7093. HYDROPHORUS.



8349. ANNUNCIATION OF THE VIRGIN  
By Andrea della Robbia.



8350, 9300, 9595.  
BOYS SINGING FROM BOOK.



8351, 9302, 9597.  
BOYS PLAYING TRUMPETS.



8352, 9599. GIRLS PLAYING ON LYRES.



8353, 9600. GIRLS PLAYING ON LUTES.



8354, 9303, 9598.  
BOYS PLAYING ON DRUMS.



8355, 9304, 9596.  
BOYS SINGING FROM SCROLL.



8356.  
CHILDREN DANCING.



8357.  
CHILDREN PLAYING ON INSTRUMENTS.



8358.  
CHILDREN PLAYING TAMBOURINES.



8359.  
CHILDREN PLAYING CYMBALS.



8360.



8361.



8362.



8363.



8364. CHERUBS DANCING AND PLAYING ON INSTRUMENTS. By Donatello.

8365. CHERUBS DANCING.  
By Donatello.8366. CHERUBS PLAYING INSTRUMENTS.  
By Donatello.8373. MADONNA AND CHILD.  
By Rossellino.8376.  
MADONNA AND CHILD.  
By Andrea della Robbia.8375.  
MADONNA AND CHILD.  
By Rossellino.8396.  
MADONNA AND CHILD.  
By Donatello.8391.  
MADONNA AND CHILD.  
By Benedetto da Maiano.8374.  
LION'S HEAD.  
By Donatello.8397.  
ST. JOHN.  
By Donatello.8395.  
MADONNA AND CHILD.  
By Donatello.8375.  
MADONNA AND CHILD.  
By Luca della Robbia.8398.  
ST. CECILIA.  
By Donatello.



8399.  
ST. JOHN.  
By Donatello.



8402.  
MADONNA AND CHILD.  
By Rossellino.



8411.  
MADONNA AND CHILD.  
By Michelangelo.



8415. NATIVITY.  
By Rossellino.



8416. HOLY FAMILY.  
By Michelangelo.



8417. DANTE ALIGHIERI.  
By Lombardi.



8403.



8403A.



8404.



8404A.



8405.



8405A.



8422.  
SHIELD, FLORENTINE.



8423.  
SHIELD, FLORENTINE.



8444.  
BAMBINO HEAD.



8406.



8406A.



8407.



8407A.



8408.



8408A.

DONATELLO'S CHERUBS, IN THE CHURCH OF SAN ANTONIO, PADUA.



8445.  
BAMBINO HEAD.



8446.  
BAMBINO HEAD.



8447.  
BAMBINO HEAD.





10002. CUPIDS.  
By Fleming.



10009. FLIGHT OF NIGHT.  
By William M. Hunt.



10003. MERCURY AND PANDORA.  
By Flaxman.



10007. TRIUMPH OF ALEXANDER.  
By Thorwaldsen.



10005. ALEXANDRIAN PROGRESSION.  
By Thorwaldsen.



10006. ALEXANDRIAN PROGRESSION.  
By Thorwaldsen.



10014.



10015.



10016.



10017.



10018.



10019.



10028. CUPID.



10029. CUPID.



10030. AURORA.



10035. THORWALDSEN'S MORNING.



10036. THORWALDSEN'S NIGHT.

10044.  
DECLARATION OF INDEPENDENCE.

(From the Franklin Statue, City Hall, Boston.)

10045.  
TREATY OF PEACE AND INDEPENDENCE.10041. CUPIDS SINGING.  
By Giovanni da Bologna

10043.

10042.  
FRAGMENT OF 10041.

10701.  
CUPID HEAD, \$0.75.10702.  
CUPID HEAD, \$0.75.10703.  
CUPID HEAD, \$0.75.10704.  
CUPID HEAD, \$0.75.

10660. HARVESTERS.



10662. MARKET OF LOVES.



10681. MOZART.



10682. BERTHOVEN.



10683. AURORA.



10684. SAVONAROLA.



10698. CUPID.



10700. CUPID.



12608. CELLINI SHIELD.



12610. MILTON SHIELD.



12609. CELLINI SHIELD.



12607. TROJAN SHIELD.



12612. JUDGMENT OF PARIS.



12613. MEDUSA SHIELD.



12806 BARYE'S LION.



12099 THE VATICAN EAGLE.



12819 BARYE'S TIGER.



18901. FRIEZE, FROM TRAJAN'S FORUM.



18900. FRIEZE, FROM TRAJAN'S FORUM.

A LIBERAL DISCOUNT TO EDUCATIONAL INSTITUTIONS  
ACCORDING TO AMOUNT OF PURCHASE.

## Catalogue.

### GREEK AND ROMAN STATUES.

ORIGINAL SIZE.

| No. | Name   | By                                  | Height. |     | Price.  |
|-----|--|-------------------------------------|---------|-----|---------|
|     |  |                                     | Ft.     | In. |         |
| 500 | Faun   | By Praxiteles                       | 6       | 3   | \$60.00 |
|     | The "Marble Faun" of Hawthorne. Found in 1701 near the ruins of the villa of Antoninus Pius and placed in the Capitoline Museum, Rome, in 1753. An exquisite description of this statue is found in Hawthorne's romance.   |                                     |         |     |         |
| 501 | Venus of Melos   | In the Louvre                       | 7       | 1   | 60.00   |
|     | Found in 1820 by a peasant in a grotto on the Island of Melos, near the town of that name. Bought for 6,000 francs by the Marquis de Riviere, French Ambassador to Turkey, and by him presented to Louis XVIII.  |                                     |         |     |         |
| 502 | Niobe and Child  |                                     | 7       | 8   | 100.00  |
|     | In the Uffizi Gallery, Florence. Found in 1583 near the Lateran, Rome; removed to Florence in 1775. These two figures were found with twelve others, evidently a group; probably the work of Scopas.   |                                     |         |     |         |
| 503 | Diana of Versailles  | In the Louvre                       | 7       |     | 100.00  |
|     | Sometimes called "Diana à la Biche." Date of discovery not known; was carried from Rome to France in the sixteenth century. Placed in the Louvre in 1798.  |                                     |         |     |         |
| 504 | Apollo Belvedere   | In the Vatican, Rome                | 7       | 6   | 100.00  |
|     | Marble Statue, found near the end of the fifteenth century at Capo d'Anzo (Antium). Bought by Julius II, at that time Cardinal Giuliano della Rovera, and placed in the garden of S. Pietro in Vincoli, Rome. When he became Pope (1503) he caused it to be removed to the Belvedere of the Vatican.               |                                     |         |     |         |
| 505 | Venus Genetrix   |                                     | 5       | 10  | 75.00   |
|     | Marble Statue, found near the middle of the seventeenth century at Fréjus, France. Taken to Paris in 1650; now in the Louvre.  |                                     |         |     |         |
| 507 | Minerva Giustiniani.   | In the Braccio Nuovo of the Vatican | 7       | 6   | 100.00  |
|     | Marble Statue, found near the Church of Santa Marie sopra Minerva, Rome; date of discovery unknown. It was in the possession of the Giustiniani family in the seventeenth century, and later became the property of Lucien Bonaparte. It was afterward bought of him by Pope Pius VII., and placed in the Vatican. |                                     |         |     |         |

A mould of the "Lemnian Athena" has just been completed.  
Prices, etc., sent on application.

## Greek and Roman Statues—Continued.

| No. |   | Height,<br>Ft. In. | Price.  |
|-----|---|--------------------|---------|
|     |   |                    |         |
| 508 | Pudicitia (so called) . . . . . <i>In the Vatican</i><br>A fully draped female figure, believed by some to represent the Goddess of Modesty, by others thought to be a portrait of Livia, wife of Augustus.   | 7                  | \$75.00 |
| 510 | Hermes, Olympian . . . . . <i>By Praxiteles</i><br>Original, in Parian marble, found in 1877 lying near its pedestal buried in the ruin of the Temple of Hera, at Olympia. He bears on his left arm the infant Dionysius, sent by Zeus to be nursed by the Nymphs. It was found by a German archaeological expedition.  | 7 8                | 100.00  |
| 511 | Discobolus, after Myron . . . . . <i>In the Vatican</i><br>Found in 1791 in the ruins of Hadrian's Villa, Rome.   | 6                  | 65.00   |
| 518 | Psyche . . . . . <i>In the Museum of Naples</i><br>Found about the middle of the last century in the ruins of the Roman Amphitheatre at Capua.  | 3 2                | 12.00   |
| 519 | Diana, Robing, from Gabii . . . . . <i>In the Louvre</i>  | 6                  | 60.00   |
| 520 | Dying Gaul; size of base 66 x 30.<br>. . . . . <i>In the Capitoline Museum</i><br>Found in Rome in the sixteenth century, and placed in the Capitol by Clement XII.   | 3 6                | 85.00   |
| 523 | Laocoön . . . . . <i>In the Vatican</i><br>Marble Group, found in 1506 among the ruins of the palace of Titus on the Esquiline, Rome. Bought by Pope Julius II.   | 6 3                | 200.00  |
| 524 | Sophocles . . . . . <i>In the Lateran Museum, Rome</i><br>Found at Terracina, Italy, about 1839, and presented to Pope Gregory XVI.   | 7                  | 100.00  |
| 525 | Demosthenes . . . . . <i>In the Vatican</i><br>Marble Statue, formerly in the Villa Aldobrandini, at Frascati, near Rome. Regarded as an excellent portrait of the greatest of Greek orators.   | 7                  | 100.00  |
| 526 | Bacchante, Dancing . . . . . <i>In the Berlin Museum</i><br>This is doubtless an original Greek work. The modelling in this statue shows the feeling and freedom of a master's hand, and the refinement of both conception and technique, suggest that it was executed in the fourth century, B.C.  | 4 2                | 40.00   |
| 529 | Niké (or Victory) of Samothrace . . . . . <i>In the Louvre</i><br>Found in the Island of Samothrace, 1863. This statue was part of a votive offering, commemorative of a great naval victory, doubtless that of Demetrius of Macedonia over Ptolemy of Egypt, off Cyprus, B.C., 306. It stood upon a pedestal representing the prow of a vessel. The goddess is represented as rushing forward in battle. | 9 3                | 200.00  |
| 530 | Wrestlers . . . . . <i>In the Uffizi Gallery, Florence</i><br>This group was found in 1583 near the Lateran, Rome. Size of base, 25 x 48.   | 3 6                | 75.00   |
| 532 | Thalia, Muse of Comedy . . . . . <i>In the Vatican</i><br>Seated Statue found in 1774 at Tivoli, Italy, and placed in the Vatican.  | 5 3                | 65.00   |

## Greek and Roman Statues—Continued.

| No. |  | Height,<br>Ft. In. | Price.  |
|-----|--|--------------------|---------|
|     |  |                    |         |
| 533 | Clio, Muse of History . . . . . <i>In the Vatican</i><br>Seated Statue found in 1774 at Tivoli, Italy, and placed in the Vatican.  | 4 7                | \$65.00 |
| 534 | Apollo Citharædus. <i>After Scopas</i> . . . . . <i>In the Vatican</i><br>Found in 1774 at Tivoli, Italy, and placed in the Vatican.   | 6 6                | 150.00  |
| 535 | Niobid . . . . . <i>In the Vatican</i><br>Discovered in the ruins of Hadrian's Villa in the sixteenth century. This statue represents one of the elder daughters of Niobe fleeing from the arrows of Apollo. | 6                  | 125.00  |
| 536 | Polyhymnia . . . . . <i>In the Vatican</i>   | 5 3                | 75.00   |
| 538 | Amazon . . . . . <i>In the Berlin Museum</i>   | 6 10               | 100.00  |
| 541 | Niké of Præonius . . . . . <i>In the Museum at Olympia</i>   | 8 3                | 125.00  |
| 544 | Augustus Cæsar . . . . . <i>In the Vatican</i>   | 7 4                | 200.00  |
| 546 | Fate . . . . . <i>In the British Museum</i><br>From the eastern pediment of the Parthenon.   | 4 7                | 75.00   |
| 547 | Fates, Two . . . . . <i>In the British Museum</i><br>From the eastern pediment of the Parthenon.   | 4                  | 150.00  |
| 553 | Æschines . . . . . <i>In the Naples Museum</i>   | 7                  | 100.00  |

## REDUCTIONS OF GREEK AND ROMAN STATUES.

|      |   |      |        |
|------|---|------|--------|
| 750  | Polyhymnia. <i>Reduction of 536</i> . . . . .   | 2 6  | \$8.00 |
| 752  | Niké, or Victory, of Samothrace<br>A mechanical reduction of 529; wings extending about two feet from the body.   | 3    | 15.00  |
| 752A | Prow of a Vessel (used as a bracket for 752)<br>This prow is suggestive of the pedestal which originally supported the Niké of Samothrace. When ordering this support, please state whether it is to be placed in a corner of a wall or on a flat wall. |      | 12.00  |
| 752B | Prow of a Vessel<br>A mechanical reduction of the original pedestal, in exact proportion with the reduced copy of the Niké, 752.  | 5 6  | 30.00  |
| 753  | Niké of Samothrace. <i>Reduction of 529</i> . . . . .   | 1 7  | 5.00   |
| 753A | Niké of Samothrace. <i>Reduction of 529</i> . . . . .   | 1 3½ | 4.00   |
| 753B | Prow of a Vessel.<br><i>Reduction of 752B, in proportion with statue 753A</i>   | 1 2½ | 4.00   |
| 755  | Ariadne, Sleeping, base 24 x 10 . . . . . <i>In the Vatican</i>   | 1 5  | 10.00  |
| 756  | Wrestlers; base 9 x 20. <i>Reduction of 530</i> . . . . .   | 1    | 12.00  |
| 764  | Niké of Samothrace . . . . .  | 2 4  | 9.00   |
| 766  | Faun, Praxiteles. <i>Reduction of 500</i> . . . . .   | 2 5  | 8.00   |

## Reductions of Greek and Roman Statues—Continued.

| No. | Description   | Height, |     | Price   |
|-----|---|---------|-----|---------|
|     |   | Ft.     | In. |         |
| 767 | Venus of Melos. <i>Reduction of 501</i>   | 3       | 8   | \$10.00 |
| 768 | Venus of Melos. <i>Reduction of 501</i>   | 3       | 4   | 8.00    |
| 769 | Venus of Melos. <i>Reduction of 501</i>   | 2       | 10  | 6.00    |
| 770 | Venus of Melos. <i>Reduction of 501</i>   | 2       | 2   | 4.00    |
| 771 | Venus of Melos. <i>Reduction of 501</i>   | 1       | 6   | 2.00    |
| 776 | Diana of Versailles. <i>Reduction of 503</i>  | 2       | 10  | 20.00   |
| 777 | Apollo Belvedere. <i>Reduction of 504</i>   | 3       |     | 20.00   |
| 779 | Sophocles. <i>Reduction of 524</i>  | 2       | 10  | 8.00    |
| 781 | Minerva Giustiniani. <i>Reduction of 507</i>  | 3       | 5   | 18.00   |
| 782 | Minerva Giustiniani. <i>Reduction of 507</i>  | 2       | 9   | 8.00    |
| 785 | Hermes; legs restored. <i>Reduction of 510</i>  | 2       | 6   | 10.00   |
| 786 | Discobolus of Myron. <i>Reduction from the Discobolus in the Lancellotti Palace, Rome</i> | 1       | 5   | 4.00    |
| 794 | Psyche. <i>Reduction of 518</i>   | 1       | 6   | 4.00    |
| 796 | Diana, Robing. <i>Reduction of 519</i>  | 2       | 2   | 8.00    |
| 798 | Dying Gaul; base 24 x 12. <i>Reduction of 520</i>   | 1       | 3   | 10.00   |
| 799 | Dying Gaul; base 10 x 20. <i>Reduction of 520</i>   | 1       |     | 8.00    |
| 803 | Amazon. <i>In the Capitoline Museum, Rome</i>   | 2       | 6   | 10.00   |
| 805 | Æschines. <i>Reduction of 533</i>   | 2       | 10  | 8.00    |
| 813 | Diana, Robing. <i>Reduction of 519</i>  | 3       | 3   | 18.00   |
| 814 | Venus Genetrix. <i>Reduction of 505</i>   | 2       | 4   | 8.00    |
| 816 | Demosthenes. <i>Reduction of 525</i>  | 2       | 11  | 10.00   |
| 817 | Pudicitia. <i>Reduction of 508</i>  | 3       | 9   | 15.00   |
| 819 | Urania. <i>In the Museo Pio Clement, Rome</i>   | 1       | 1   | 3.00    |
| 822 | Venus of Arles. <i>In the Louvre</i>  | 2       | 9   | 12.00   |
| 823 | Ceres. <i>In the Vatican</i>  | 3       | 7   | 12.00   |
| 824 | Venus Genetrix. <i>Reduction of 505</i>   | 2       | 10  | 15.00   |

## RENAISSANCE AND MODERN STATUES.

## ORIGINAL SIZE.

|      |  |   |   |         |
|------|--|---|---|---------|
| 2501 | Mercury, Flying. <i>By Giovanni da Bologna</i><br>Original in the National Museum, Florence. | 4 | 6 | \$40.00 |
| 2502 | St. George. <i>By Donatello. In the Bargello, Florence</i>                                   | 7 |   | 75.00   |
| 2507 | Cupid, kneeling. <i>By Michelangelo</i><br>Original in the South Kensington Museum, London.  | 3 | 2 | 40.00   |
| 2508 | David. <i>By Verrocchio</i><br>Original in the National Museum, Florence.                    | 4 | 2 | 40.00   |

## Renaissance and Modern Statues—Continued.

| No.  | Description  | Height, |     | Price    |
|------|--|---------|-----|----------|
|      |  | Ft.     | In. |          |
| 2509 | Tomb of Bishop Federighi. <i>By Luca della Robbia</i><br>Original of marble in the Church of S. Francesco di Paolo, near Florence. | 6       | 6   | \$125.00 |
| 2514 | Washington. <i>By Houdon</i><br>Original of marble in the Capitol at Richmond, Va.   | 6       | 10  | 150.00   |

## RENAISSANCE AND MODERN STATUETTES AND REDUCTIONS.

|      |  |   |    |         |
|------|--|---|----|---------|
| 2803 | Mercury, seated. <i>By Pigalli</i>   | 2 |    | \$10.00 |
| 2806 | David. <i>By A. Mercie</i>   | 3 |    | 8.00    |
| 2807 | David. <i>By A. Mercie</i>   | 2 | 4  | 6.00    |
| 2828 | Moses. <i>Reduction of 2834. By Michelangelo</i>   | 1 | 9  | 8.00    |
| 2829 | Giuliano de Medici. <i>By Michelangelo</i>   | 3 | 1  | 25.00   |
| 2830 | Giuliano de Medici. <i>By Michelangelo</i>   | 3 | 1  | 25.00   |
| 2831 | Lorenzo de Medici. <i>By Michelangelo</i>  | 1 | 4  | 5.00    |
| 2832 | Giuliano de Medici. <i>By Michelangelo</i>   | 1 | 4  | 5.00    |
| 2833 | Lorenzo de Medici. <i>By Michelangelo</i>  | 3 | 1  | 25.00   |
| 2834 | Moses. <i>By Michelangelo</i>  | 1 | 8½ | 3.50    |
| 2838 | Young Athlete. <i>By Verrocchio</i>  | 2 | 2  | 25.00   |
| 2842 | Colleoni, Bartolomeo. <i>Reduction of the bronze equestrian statue in Venice.</i>  |   |    |         |
| 2843 | Milo of Crotona. <i>By Edmè Dumont (1768)</i><br>Original in the Louvre. A famous Greek athlete of the sixth century, B.C. | 2 | 7  | 15.00   |
| 2844 | Cupid with Bow   | 2 |    | 5.00    |
| 2845 | Mercury, Flying. <i>Reduction of 2501</i>  | 3 | 10 | 20.00   |
| 2846 | Mercury, Flying. <i>Reduction of 2501</i>  | 3 |    | 12.00   |
| 2849 | David. <i>By Michelangelo</i>  | 2 | 6  | 8.00    |
| 2849 | David  | 2 | 7  | 8.00    |
| 2850 | St. George. <i>Reduction of 2502</i>   | 1 | 1  | 1.50    |
| 3800 | Lincoln Devil  |   |    |         |

## THE BARBARINI VASE.

- No. 3950 Barbarini; or Portland Vase. Height 10 ins. . . .  
Originally in the Barbarini Palace, Rome. It was purchased by Sir W. Hamilton, and sold by him to the Duchess of Portland; it was at her death presented by her son, the Duke of Portland, to the British Museum, where it is now known as the "Portland Cinerary Vase." It was found about the middle of the sixteenth century inclosed in a marble sarcophagus under the Monte del Grano, near Rome. The original vase is made of purple glass, ornamented with white opaque figures in relief.

Price  
\$2.50

## BUSTS, ANTIQUE—GREEK AND ROMAN.

| No.  | ORIGINAL SIZE.   | Height. |     | Price.  |
|------|--|---------|-----|---------|
|      |  | Ft.     | In. |         |
| 3999 | Jupiter of Otricoli . . . . . <i>In the Vatican</i>  | 3       | 4   | \$20.00 |
| 4000 | Juno Ludovisi . . . . . <i>In the Villa Ludovisi, Rome</i>   | 3       | 11  | 25.00   |
| 4001 | Juno Farnese . . . . . <i>In the Naples Museum</i>   | 3       |     | 15.00   |
| 4002 | Minerva of Velletri . . . . . <i>In the Louvre</i>   | 3       | 3   | 20.00   |
| 4003 | Ajax . . . . . <i>In the Loggia de Lanzi, Florence</i>   | 3       | 4   | 15.00   |
| 4004 | Augustus Cæsar . . . . . <i>From the Statue in the Vatican</i>   | 2       | 8   | 15.00   |
| 4009 | Virgil . . . . .   | 2       | 2   | 10.00   |
| 4010 | Minerva Giustiniani . . . . . <i>From the Statue in the Vatican</i>  | 2       | 6   | 10.00   |
| 4011 | Hermes . . . . . <i>From the Statue at Olympia</i>   | 2       | 9   | 12.00   |
| 4012 | Venus of Melos . . . . . <i>From the Statue in the Louvre</i>  | 2       | 10  | 12.00   |
| 4014 | Apollo Belvedere. . . . . <i>From the Statue in the Vatican</i>  | 2       | 8   | 12.00   |
| 4015 | Diana of Versailles. . . . . <i>From the Statue in the Louvre</i>  | 2       | 6   | 12.00   |
| 4016 | Plato; or Bearded Dionysius . . . . .<br>Original of bronze in the Naples Museum; found at Herculaneum.                        | 2       | 2   | 12.00   |
| 4018 | Sophocles . . . . . <i>From the Statue in the Lateran</i>  | 2       | 2   | 10.00   |
| 4019 | Demosthenes . . . . . <i>From the Statue in the Vatican</i>  | 2       | 2   | 10.00   |
| 4024 | Pericles . . . . . <i>In the British Museum</i>  | 2       |     | 10.00   |
| 4027 | Clytie . . . . . <i>In the British Museum</i>  | 2       | 3   | 12.00   |
| 4028 | Psyche of Naples . . . . . <i>In the Museum at Naples</i>  | 2       | 3   | 10.00   |
| 4030 | Diana, Robing . . . . . <i>From the Statue in the Louvre</i>   | 2       |     | 8.00    |
| 4032 | Minerva . . . . . <i>From the Statue in the Louvre</i>   | 1       | 8   | 5.00    |
| 4033 | Augustus, Young . . . . . <i>In the Vatican</i>  | 1       | 10  | 5.00    |
| 4035 | Julius Cæsar . . . . . <i>In the British Museum</i>  | 1       | 7   | 4.00    |
| 4037 | Hypnos . . . . . <i>In the British Museum</i><br>This is the only fragment extant of a bronze statue, found near Perugia, 1855 | 1       | 1   | 4.00    |

## Busts, Antique—Greek and Roman—Continued.

| No.  |  | Height. |     | Price. |
|------|--|---------|-----|--------|
|      |  | Ft.     | In. |        |
| 4039 | Cicero . . . . . <i>In the Capitoline Museum</i>                                   | 1       | 8   | \$8.00 |
| 4043 | Homer . . . . . <i>From a Bronze in the Naples Museum</i>                          | 2       | 3   | 10.00  |
| 4046 | Marcus Aurelius . . . . . <i>In the Vatican</i>                                    | 2       | 4   | 10.00  |
| 4048 | Julius Cæsar . . . . . <i>In the Louvre</i>  | 2       | 2   | 8.00   |
| 4050 | Socrates . . . . .   | 2       |     | 8.00   |
| 4052 | Sappho . . . . .<br>Original of bronze in the Naples Museum. Found at Herculaneum. | 1       | 10  | 8.00   |

## BUSTS, CABINET—ANTIQUÉ.

|      |   |   |    |        |
|------|---|---|----|--------|
| 4400 | Hermes. Reduction of 4011 . . . . .           | 2 | 2  | \$8.00 |
| 4401 | Venus of Melos. Reduction of 4012 . . . . .   | 1 | 8  | 6.00   |
| 4402 | Clytie. Reduction of 4027 . . . . .           | 1 | 10 | 5.00   |
| 4403 | Apollo Belvedere. Reduction of 4014 . . . . . | 2 | 2  | 8.00   |
| 4404 | Apollo Belvedere. Reduction of 4014 . . . . . | 1 | 8  | 5.00   |
| 4405 | Diana. Reduction of 4015 . . . . .            | 1 | 8  | 5.00   |
| 4406 | Ajax. Reduction of 4003 . . . . .             | 2 | 1  | 8.00   |

## BUSTS, SMALL CABINET—ANTIQUÉ.

|      |   |   |    |        |
|------|---|---|----|--------|
| 4650 | Hermes. Reduction of 4011 . . . . .         | 1 | 8  | \$4.00 |
| 4651 | Hermes. Reduction of 4011 . . . . .         | 1 | 5  | 3.00   |
| 4652 | Venus of Melos. Reduction of 4012 . . . . . | 1 | 3  | 2.50   |
| 4652 | Venus of Melos. Reduction of 4012 . . . . . | 1 | 5  | 3.00   |
| 4653 | Homer . . . . .                             | 1 | 3  | 2.50   |
| 4654 | Homer. Reduction of 4043 . . . . .          | 1 | 10 | 4.00   |
| 4655 | Minerva. Reduction of 4010 . . . . .        | 1 | 6  | 3.00   |
| 4656 | Sophocles. Reduction of 4018 . . . . .      | 1 | 6  | 4.00   |
| 4657 | Socrates. Reduction of 4050 . . . . .       | 1 | 3  | 2.50   |
| 4658 | Diana, Robing. Reduction of 4030 . . . . .  | 1 | 3  | 2.50   |

## BUSTS—RENAISSANCE.

ORIGINAL SIZE.

| No.  |                        |  | Height. |     | Price. |
|------|------------------------|--|---------|-----|--------|
|      |                        |  | Ft.     | In. |        |
| 5151 | Boy                    | By Desiderio da Settignano; Florence   |         | 11  |        |
| 5152 | Christ, Infant         | By Desiderio da Settignano<br>Original in the Church of the Vanchetoni, Florence.  | 1       | 1   | \$2.00 |
| 5153 | Young Girl             | By Luca della Robbia<br>Original in the Bargello, Florence.  | 1       | 1   | 3.00   |
| 5155 | Young Girl             | By a Pupil of Andrea della Robbia<br>Original in the Museum of Thermes.  | 1       | 4   | 3.00   |
| 5156 | Youth (Medici Family)  | By Donatello   | 1       | 6   |        |
| 5157 | Madonna                | By Michelangelo<br>From the statue in the Notre Dame, Paris.   | 1       | 8   | 4.00   |
| 5158 | Maiden of Lille        | Attributed to Raphael<br>Original of wax at the Museum in Lille, France.   | 1       | 7   | 4.00   |
| 5159 | St. John               | By Donatello   | 1       | 6   | 3.00   |
| 5160 | Young Girl             | By Donatello   | 1       | 4   | 3.50   |
| 5161 | St. John               | By Donatello<br>Original in the Pinacoteca, Florence.  | 1       | 3   | 3.50   |
| 5162 | Boy, laughing          | By Donatello   | 1       | 1   | 3.00   |
| 5163 | Christ, Infant         | By Desiderio da Settignano<br>Original of bronze in the Dreyfus collection, Paris.   |         | 11  | 2.50   |
| 5166 | Dante                  | Original of Bronze in the Naples Museum  | 1       | 1   | 3.00   |
| 5168 | Princess of Urbino     | By Desiderio da Settignano<br>Original in the Berlin Museum.   | 1       | 7   | 8.00   |
| 5169 | Dante                  | From a Bronze in Florence  | 1       | 7   | 10.00  |
| 5171 | Unknown Woman          | In the Louvre  | 1       | 10  | 8.00   |
| 5173 | Marietta Strozzi       | By Desiderio da Settignano<br>A portrait of an Italian princess, supposed to be that of Marietta Strozzi; original of marble in the Berlin Museum. | 1       | 8   | 8.00   |
| 5174 | Slave                  | From the Statue by Michelangelo  | 1       | 3   | 4.00   |
| 5180 | Dante                  |  | 2       | 6   | 10.00  |
| 5193 | David                  | Head of the Colossal Statue by Michelangelo<br>Original in the National Museum, Florence.  | 3       | 11  | 30.00  |
| 5194 | St. George             | From the Statue by Donatello   | 2       | 3   | 8.00   |
| 5198 | Young Girl, Florentine |  | 1       | 1   | 3.00   |

## BUSTS—MODERN.

ORIGINAL SIZE.

|      |            |   |   |   |         |
|------|------------|---|---|---|---------|
| 5400 | Longfellow | By Thomas Brock<br>Original in Westminster Abbey, London. | 2 | 8 | \$15.00 |
| 5401 | Beethoven  |   | 2 | 5 | 12.00   |

## Busts—Modern—Continued.

| No.  |                     |  | Height. |     | Price.  |
|------|---------------------|--|---------|-----|---------|
|      |                     |  | Ft.     | In. |         |
| 5402 | Mendelssohn         |  | 2       | 5   | \$12.00 |
| 5406 | Mozart              |  | 2       | 6   | 12.00   |
| 5407 | Napoleon Bonaparte  | By Thomas Ball   | 2       | 10  | 12.00   |
| 5408 | Byron               |  | 2       | 10  | 12.00   |
| 5409 | Burns               | By J. C. King  | 2       | 8   | 10.00   |
| 5411 | Clay, Henry         |  | 2       | 3   | 8.00    |
| 5414 | Marshall, John      | By John Frazee<br>Formerly Chief Justice of the United States Supreme Court.<br>From the original in marble in the Boston Athenaeum. | 2       | 9   | 12.00   |
| 5415 | Bancroft, George    | By Greenough<br>Original of bronze in the Library of Harvard University.   | 2       | 7   | 12.00   |
| 5416 | Jefferson, Thomas   |  | 2       | 8   | 12.00   |
| 5417 | Sumner, Charles     |  | 2       | 8   | 12.00   |
| 5419 | Mann, Horace        |  | 2       | 6   | 10.00   |
| 5422 | Hawthorne           | By Louisa Lander<br>Original of marble in Public Library, Concord, Mass.   | 2       |     | 10.00   |
| 5423 | Adams, John Quincy  |  | 2       |     | 10.00   |
| 5424 | Irving, Washington  | By Ball Hughes<br>The only bust of Irving made from life.  | 2       |     | 10.00   |
| 5425 | Hamilton, Alexander | By Houdon  | 2       | 3   | 10.00   |
| 5427 | Grant               | By Franklin Simmons  | 2       | 8   | 10.00   |
| 5428 | Phillips, Wendell   | By Martin Milmore  | 2       | 5   | 10.00   |
| 5429 | Webster, Daniel     | By Thomas Ball   | 2       | 10  | 12.00   |
| 5431 | Agassiz             | By Jackson   | 2       | 8   | 10.00   |
| 5433 | Adams, John         | By Binon (1818)<br>Original in Faneuil Hall, Boston.   | 2       | 1   | 10.00   |
| 5434 | Froebel             |  | 2       | 4   | 10.00   |
| 5435 | Milton              |  | 2       | 5   | 10.00   |
| 5436 | Shakespeare         | By Roubilliac. In British Museum   | 2       | 5   | 10.00   |
| 5437 | Scott               |  | 2       | 8   | 10.00   |
| 5438 | Newton, Sir Isaac   |  | 2       | 6   | 10.00   |
| 5439 | Locke, John         |  | 2       | 6   | 10.00   |
| 5440 | Columbus            | Attributed to Canova<br>Original in the Capitoline Museum, Rome.   | 2       | 3   | 10.00   |
| 5441 | Pestalozzi          |  | 2       |     | 8.00    |
| 5443 | Mendelssohn         |  | 2       | 2   | 10.00   |
| 5444 | Mozart              |  | 2       |     | 8.00    |
| 5445 | Beethoven           | By Houdon  | 2       |     | 10.00   |
| 5446 | Franklin            | By Houdon  | 2       | 5   | 10.00   |
| 5447 | Washington          | By Volke   | 2       | 6   | 10.00   |
| 5448 | Lincoln             | By Houdon  | 2       | 6   | 10.00   |
| 5450 | Lafayette           | By John Rogers   | 2       | 3   | 10.00   |
| 5451 | Beethoven           |  | 2       |     | 10.00   |



## BUSTS—MODERN—Continued.

| No.  |  | Height. |     | Price.  |
|------|--|---------|-----|---------|
|      |  | Ft.     | In. |         |
| 5452 | Humboldt . . . . .   | 2       | 3   | \$10.00 |
| 5456 | Shakespeare<br>From the Stratford Monument, England.   | 1       | 6   | 6.00    |
| 5457 | Washington . . . . .<br><i>By Houdon</i>   | 1       | 8   | 6.00    |
| 5459 | Holmes, Oliver Wendell . . . . .   | 2       |     | 8.00    |
| 5460 | Emerson . . . . .<br>The only bust of Emerson made from life.<br><i>By D. C. French</i>          | 2       |     | 15.00   |
| 5461 | Queen Louise . . . . .<br>From the statue in the Mausoleum at Charlottenburg.<br><i>By Rauch</i> | 2       | 5   | 12.00   |
| 5462 | Mme. Recamier . . . . .<br><i>By Carpeaux</i>  | 2       |     | 8.00    |
| 5464 | Napoleon Bonaparte . . . . .<br><i>By Canova</i>   | 1       | 10  | 8.00    |
| 5466 | Schiller . . . . .   | 2       | 4   | 10.00   |
| 5467 | Goethe . . . . .   | 2       | 4   | 10.00   |
| 5475 | Washington . . . . .<br>From the Statue No. 2514.<br><i>By Houdon</i>                            | 2       | 6   | 12.00   |

## BUSTS—CABINET, MODERN.

|      |   |   |    |        |
|------|---|---|----|--------|
| 5751 | Beethoven . . . . .                             | 1 | 8  | \$5.00 |
| 5752 | Mozart . . . . .                                | 1 | 8  | 5.00   |
| 5753 | Wagner . . . . .                                | 2 |    | 6.00   |
| 5754 | Byron . . . . .                                 | 1 | 8  | 5.00   |
| 5755 | Dickens . . . . .                               | 1 | 11 | 5.00   |
| 5756 | Locke, John . . . . .                           | 1 | 10 | 5.00   |
| 5757 | Milton. <i>Reduction of 5435</i> . . . . .      | 1 | 9  | 5.00   |
| 5758 | Shakespeare. <i>Reduction of 5436</i> . . . . . | 1 | 9  | 5.00   |
| 5759 | Scott. <i>Reduction of 5437</i> . . . . .       | 1 | 9  | 5.00   |
| 5760 | Newton. <i>Reduction of 5438</i> . . . . .      | 1 | 10 | 5.00   |

## BUSTS, SMALL CABINET—MODERN.

|      |  |   |   |        |
|------|--|---|---|--------|
| 6007 | Burns. <i>Reduction of 5409</i> . . . . .                | 1 | 3 | \$2.50 |
| 6009 | Irving, Washington . . . . .                             | 1 | 6 | 3.00   |
| 6010 | Milton. <i>Reduction of 5435</i> . . . . .               | 1 | 5 | 3.00   |
| 6011 | Shakespeare. <i>Reduction of 5436</i> . . . . .          | 1 | 5 | 3.00   |
| 6012 | Sumner . . . . .   | 1 | 6 | 3.00   |
| 6015 | Froebel. <i>Reduction of 5434</i> . . . . .              | 1 | 4 | 3.00   |
| 6017 | Whittier . . . . .<br><i>By William Ordway Partridge</i> | 1 | 5 | 3.00   |

## PEDESTALS.

## SUPPORTS FOR BUSTS AND STATUES.

| No.  |   | Height. |     | Price. |
|------|---|---------|-----|--------|
|      |   | Ft.     | In. |        |
| 6650 | Pedestal, fluted . . . . .  | 3       | 9½  | \$8.00 |
| 6651 | Pedestal, fluted . . . . .  | 3       | 3   | 6.00   |
| 6652 | Pedestal, Renaissance . . . . .   | 4       |     | 8.00   |
| 6654 | Pedestal, Roman . . . . .   | 3       | 6   | 10.00  |
| 6656 | Pedestal, fluted, decorated with anthemion . . . . .  | 2       | 10  | 6.00   |
| 6657 | Pedestal, Tuscan . . . . .  | 3       | 6   | 10.00  |
| 6658 | Pedestal, fluted, top diameter 16 in. . . . .   | 3       |     | 8.00   |
| 6661 | Pedestal, Antique . . . . .<br>Originally designed for a Bacchic candelabrum.<br><i>In the Louvre</i> | 3       | 4   | 6.00   |
| 6662 | Pedestal, Roman . . . . .   | 3       | 2   | 8.00   |

## BRACKETS.

THE DIMENSIONS GIVEN OF THESE BRACKETS ARE OF THE TOP SURFACE ONLY.  
THE FIRST GIVEN IS THE PROJECTION FROM THE WALL, THE SECOND THE WIDTH.

| No.  |   | Size, in. |       | Price. |
|------|---|-----------|-------|--------|
|      |   |           |       |        |
| 6800 | Bracket, Renaissance . . . . .  | 13½       | x 11½ | \$5.00 |
| 6801 | Bracket, Renaissance . . . . .  | 11½       | x 11½ | 4.00   |
| 6808 | Bracket, with Male Face, heavily Bearded<br><i>By Michelangelo</i>            | 10        | x 11½ | 3.00   |
| 6811 | Bracket, Renaissance . . . . .  | 8½        | x 9   | 2.50   |
| 6812 | Bracket, Roman . . . . .<br><i>From the Vatican</i>                           | 13½       | x 13½ | 5.00   |
| 6813 | Bracket, with two Eagles holding Shield<br>From the Tomb of Cardinal Ambrose. | 11½       | x 14  | 4.00   |
| 6814 | Bracket<br>From the Palazza Cancellaria, Rome.                                | 18        | x 13  | 6.00   |
| 6815 | Bracket, with Eagle . . . . .   | 12        | x 11  | 4.00   |
| 6818 | Bracket, Gothic . . . . .   | 13¾       | x 16¾ | 4.00   |
| 6823 | Bracket, Renaissance . . . . .  | 11½       | x 19½ | 7.00   |
| 6824 | Bracket, Modern . . . . .   | 18        | x 20  | 10.00  |

## RELIEFS—ANTIQUÉ: GREEK AND ROMAN.

ORIGINAL SIZE.

## THE PARTHENON FRIEZE.

The Parthenon—or Temple of the Goddess Athena—was the most beautiful of all Greek buildings, both in its architecture and in the sculpture with which it was decorated. It was built to crown the Acropolis, or citadel, of Athens during the administration of Pericles, and was finished about the year 538 B.C. The architects were Ictinus and Callicrates; but this is one of the buildings of which Plutarch tells us that Pericles gave the general charge to Phidias. It is most probable, therefore, that he designed, and possibly executed, the sculpture of the Temple, and especially the marvellous frieze surrounding its walls, which is the most beautiful work of its kind ever produced.

(Roman numerals refer to the arrangement in Michaelis' "Der Parthenon," which is believed to indicate the relative positions of the figures of the procession, as originally placed on the Parthenon.)

| No.  |                                   | Size, in. | Price. |
|------|-----------------------------------|-----------|--------|
| 7000 | Western Frieze of the Parthenon.  |           |        |
|      | Slab I. . . . .                   | 42 x 20   | \$6.00 |
|      | " II. . . . .                     | 42 x 68   | 12.00  |
|      | " III. . . . .                    | 42 x 56   | 12.00  |
|      | " IV. . . . .                     | 42 x 56   | 12.00  |
|      | " V. . . . .                      | 42 x 53   | 12.00  |
|      | " VI. . . . .                     | 42 x 54   | 12.00  |
|      | " VII. . . . .                    | 42 x 54   | 12.00  |
|      | " VIII. . . . .                   | 42 x 56   | 12.00  |
|      | " IX. . . . .                     | 42 x 54   | 12.00  |
|      | " X. . . . .                      | 42 x 53   | 12.00  |
|      | " XI. . . . .                     | 42 x 53   | 12.00  |
|      | " XII. . . . .                    | 42 x 56   | 12.00  |
|      | " XIII. . . . .                   | 42 x 57   | 12.00  |
|      | " XIV. . . . .                    | 42 x 56   | 12.00  |
|      | " XV. . . . .                     | 42 x 67½  | 12.00  |
|      | " XVI. . . . .                    | 42 x 21   | 6.00   |
| 7001 | Southern Frieze of the Parthenon. |           |        |
|      | Slab XXXIX. . . . .               | 42 x 44   | 10.00  |
|      | " XL. . . . .                     | 42 x 47   | 10.00  |
|      | " XLI. . . . .                    | 42 x 48   | 10.00  |
|      | " XLII. . . . .                   | 42 x 56   | 12.00  |
| 7002 | Northern Frieze of the Parthenon. |           |        |
|      | Slab VI. . . . .                  | 42 x 49   | 12.00  |
|      | " XVII. . . . .                   | 42 x 42   | 10.00  |
|      | " XVIII. . . . .                  | 42 x 52   | 12.00  |
|      | " XXII. . . . .                   | 42 x 49   | 12.00  |
|      | " XXIII. . . . .                  | 42 x 44   | 10.00  |
|      | " XXXI. . . . .                   | 42 x 48   | 12.00  |

## Reliefs—Antique: Greek and Roman—Continued.

| No.  |   | Size, in. | Price.  |
|------|---|-----------|---------|
| 7002 | Northern Frieze of the Parthenon—Continued.   |           |         |
|      | Slab XXXII. . . . .   | 42 x 47¼  | \$12.00 |
|      | " XXXIII. . . . .   | 42 x 48   | 12.00   |
|      | " XXXIV. . . . .  | 42 x 48¼  | 12.00   |
|      | " XXXV. . . . .   | 42 x 48   | 12.00   |
|      | " XXXVI. . . . .  | 42 x 48   | 12.00   |
|      | " XXXVII. . . . .   | 42 x 48   | 12.00   |
|      | " XXXVIII. . . . .  | 42 x 48   | 12.00   |
|      | " XXXIX. . . . .  | 42 x 48   | 12.00   |
|      | " XL. . . . .   | 42 x 51   | 12.00   |
|      | " XLI. . . . .  | 42 x 56   | 12.00   |
|      | " XLII. . . . .   | 42 x 65   | 12.00   |
| 7003 | Eastern Frieze of the Parthenon.  |           |         |
|      | Slab VI. . . . .  | 42 x 41½  | 10.00   |
|      | " VII. . . . .  | 42 x 51   | 10.00   |
|      | " VIII. . . . .   | 42 x 41   | 12.00   |
|      | " IX. . . . .   | 42 x 51   | 12.00   |
|      | " X. . . . .  | 42 x 34½  | 9.00    |
|      | " XI. . . . .   | 42 x 40   | 10.00   |
|      | " XII. . . . .  | 42 x 46   | 10.00   |
|      | " XIII. . . . .   | 42 x 54   | 12.00   |
|      | " XIV. . . . .  | 42 x 38   | 10.00   |
|      | " XV. . . . .   | 42 x 40½  | 10.00   |
|      | " XVI. . . . .  | 42 x 37   | 10.00   |
|      | " XVII. . . . .   | 42 x 44   | 10.00   |
|      | " XVIII. . . . .  | 42 x 41½  | 10.00   |
|      | " XIX. . . . .  | 42 x 28½  | 8.00    |
|      | " XX. . . . .   | 42 x 33½  | 10.00   |
| 7051 | Orpheus, Eurydice, and Hermes   | 47 x 39   | 15.00   |
|      | Original of marble in the Naples Museum. This relief represents the moment in the life of Orpheus when, granted permission to conduct his wife out of Hades, he stops to gaze upon her and is punished for this disobedience by Hermes, the messenger of the gods, who grasps and detains her. A work of the Attic school of about 400 B.C. |           |         |
| 7054 | Niké, or Victory, untying Sandal  | 37 x 20   | 5.00    |
|      | By Praxiteles. From the balustrade of the Temple of Niké Apteros, Athens. Found 1835-38, during excavations on the site of the Temple. Original in the Acropolis Museum, Athens.  |           |         |
| 7055 | Niké, decorating a Trophy   | 38 x 20   | 5.00    |
|      | From the balustrade of the Temple of Niké Apteros, Athens. Original in the Acropolis Museum, Athens. We have just reproduced several Metopes from the Parthenon. Full particulars sent on application.  |           |         |

## Reliefs—Antique: Greek and Roman—Continued.

| No.  | Description  | Size, in. | Price.  |
|------|--|-----------|---------|
| 7056 | Nikés, two, with Bull from the Temple of Niké Apteros, Athens; original in Acropolis Museum.   | 38 x 49   | \$15.00 |
| 7061 | Aphrodite persuading Helen to follow Paris . . . Original of marble in the Naples Museum; found at Pompeii.  | 26 x 26½  | 5.00    |
| 7063 | Bacchic Dance . . . <i>In the Naples Museum</i><br>A Bacchantes in the wild frenzy of the Bacchic dance, playing upon a tympanum, leads two satyrs, one of whom is playing the double flute, the other dancing and swinging in his right hand a thyrsos, and bearing on his left arm his nebris, or panther skin. At his side walks a panther. Found 1776, on the site of the ancient Gabii. | 28½ x 50½ | 12.00   |
| 7070 | Homer, head, in low relief . . .   | 15½ x 15½ | 2.00    |
| 7074 | Chariot Race (Quadriga). <i>In the Naples Museum</i><br>Found at Herculaneum.  | 29 x 57   | 12.00   |
| 7075 | Chariot Race (Quadriga). <i>In the Naples Museum</i><br>Found at Herculaneum.  | 29 x 57   | 12.00   |
| 7076 | Caryatides . . . <i>In the Naples Museum</i><br>Found at Avellino, in Campania; an inscription in Greek indicates that it is a trophy, erected in memory of a victory over the people of Carya.  | 36 x 41   | 15.00   |
| 7078 | Victory . . . From Trajan's Column, Rome.  | 27 x 45   | 7.00    |
| 7079 | Bacchante . . . From the Villa Albani, Rome.   | 19 x 26½  | 4.00    |
| 7080 | Bacchantes with Bull. <i>In the Bargello, Florence</i>   | 27 x 37   | 10.00   |
| 7082 | Antinous, Portrait of . . . In the Villa Albani, Rome.   | 44 x 39   | 30.00   |
| 7085 | Bacchantes, dancing . . . <i>In the Louvre</i>   | 29 x 74   | 25.00   |
| 7089 | Eagle, with Chaplet of Oak Leaves. . . <i>From Trajan's Forum</i><br>Original in Church of SS. Apostoli, Rome.   | 42 x 126  | 50.00   |
| 7092 | Monument of Hegeso, daughter of Proxenos . . . Original outside the Dipylon Gate, Athens.  | 38 x 50   | 25.00   |
| 7093 | Portrait of an Hydrophorus . . . Found in 1890 among the Tombs of the Cemetery outside of the Dipylon Gate, Athens. Still in original place.   | 40 x 70   | 35.00   |

## RELIEFS—ANTIQUÉ.

## MEDIUM REDUCTIONS.

|      |                                  |          |        |
|------|----------------------------------|----------|--------|
| 7758 | Western Frieze of the Parthenon. |          |        |
|      | Slab II. . . . .                 | 17 x 28  | \$2.50 |
|      | " III. . . . .                   | 17 x 22  | 2.50   |
|      | " IV. . . . .                    | 17 x 22½ | 2.50   |

## Reliefs—Antique—Continued.

| No.  | Description                                | Size, in. | Price. |
|------|--|-----------|--------|
| 7758 | Western Frieze of the Parthenon—Continued. |           |        |
|      | Slab V. . . . .                            | 17 x 21¾  | \$2.50 |
|      | " VI. . . . .                              | 17 x 22½  | 2.50   |
|      | " VII. . . . .                             | 17 x 22¾  | 2.50   |
|      | " VIII. . . . .                            | 17 x 22¾  | 2.50   |
|      | " IX. . . . .                              | 17 x 23¾  | 2.50   |
|      | " X. . . . .                               | 17 x 22¾  | 2.50   |

## RELIEFS—ANTIQUÉ.

## SMALL REDUCTIONS.

|      |   |          |        |
|------|---|----------|--------|
| 8050 | Western Frieze of the Parthenon.                        |          |        |
|      | Slab II. . . . .  | 11 x 17  | \$1.50 |
|      | " III. . . . .  | 11 x 14½ | 1.50   |
|      | " IV. . . . .   | 11 x 14½ | 1.50   |
|      | " V. . . . .  | 11 x 14  | 1.50   |
|      | " VI. . . . .   | 11 x 14½ | 1.50   |
|      | " VII. . . . .  | 11 x 14½ | 1.50   |
|      | " VIII. . . . .   | 11 x 13½ | 1.50   |
|      | " IX. . . . .   | 11 x 14½ | 1.50   |
|      | " X. . . . .  | 11 x 15½ | 1.50   |
| 8051 | Orpheus, Eurydice, and Hermes. <i>Reduction of 7051</i> | 10 x 11  | 1.00   |
| 8052 | Niké. <i>Reduction of 7054</i>                          | 9 x 15   | 1.50   |

## RELIEFS—RENAISSANCE.

## ORIGINAL SIZE.

|      |   |          |          |
|------|---|----------|----------|
| 8349 | Annunciation of the Virgin. <i>By Andrea della Robbia</i>   | 62 x 113 | \$150.00 |
|      | A lunette in the Cortile dello Spedale degl' Innocenti, Florence.   |          |          |
|      | CANTORIA FRIEZE. IN TEN PANELS. <i>By Luca della Robbia.</i> A FRIEZE OF BOYS AND GIRLS SINGING AND PLAYING ON INSTRUMENTS. FROM THE CANTORIA, IN THE MUSEUM OF SANTA MARIA DEL FIORE, FLORENCE, AS FOLLOWS:— |          |          |
| 8350 | Boys singing from One Book . . . . .  | 26 x 40  | \$10.00  |
| 8351 | Boys playing on Trumpets . . . . .  | 38 x 40  | 12.00    |
| 8352 | Girls playing on Lyres . . . . .  | 38 x 40  | 12.00    |

Reliefs — Renaissance — *Continued.*

| No.   |   | Size, in. | Price.  |
|-------|---|-----------|---------|
| 8353  | Girls playing on Lutes . . . . .  | 38 x 40   | \$12.00 |
| 8354  | Boys playing on Drums . . . . .   | 38 x 40   | 12.00   |
| 8355  | Boys singing from One Scroll . . . . .  | 26 x 40   | 10.00   |
| 8356  | Children, dancing . . . . .   | 38 x 40   | 18.00   |
| 8357  | Children playing on Instruments . . . . .   | 38 x 40   | 12.00   |
| 8358  | Children playing on Tambourines . . . . .   | 38 x 40   | 12.00   |
| 8358  | Children playing on Cymbals . . . . .   | 37 x 40   | 12.00   |
| 8359  | Bambino (so called) . . . . .   | 32 x 40   | 8.00    |
| 8360  | Bambino (so called) . . . . .   | 32 x 40   | 8.00    |
| 8361  | Bambino (so called) . . . . .   | 32 x 40   | 8.00    |
| 8362  | Bambino (so called) . . . . .   | 32 x 40   | 8.00    |
| 8363  | Bambino (so called) . . . . .   | 32 x 40   | 8.00    |
|       | The above four oval reliefs are from the Children's Hospital, Florence. Each represents an infant wrapped in swaddling clothes.   |           |         |
| 8364  | Cherubs dancing, and playing on Instruments . . . . .   | 37 x 288  | 100.00  |
|       | <i>By Donatello</i><br>Frieze from an organ balustrade, originally designed for the Duomo, Florence; now in the Museum of Santa Maria del Fiore. This frieze is divided into six slabs, sold separately, each at \$18.00. |           |         |
| 8365  | Cherubs, dancing . . . . .  | 31 x 38   | 10.00   |
|       | <i>By Donatello</i><br>From the pulpit on the exterior of the Duomo, Prato, near Florence.  |           |         |
| 8366  | Cherubs playing on Tambourines . . . . .  | 31 x 38   | 10.00   |
|       | <i>From the same</i>  |           |         |
| 8372  | Madonna and Child . . . . .   | 28 x 22½  | 3.50    |
|       | <i>By Settignano</i><br>From the Palazzo Panciatichi, Florence.   |           |         |
| 8373  | Madonna and Child . . . . .   | 33 x 32   | 4.00    |
|       | <i>By Antonio Rossellino</i><br>Original in the South Kensington Museum, England.   |           |         |
| 8374  | Lion's Head . . . . .   | 18 x 15   | 3.00    |
|       | <i>By Donatello</i><br>Original in the sacristy of San Lorenzo, Florence.   |           |         |
| 8375  | Madonna and Child . . . . .   | 18 x 26½  | 3.50    |
|       | <i>By Luca della Robbia</i>   |           |         |
| 8376  | Madonna and Child . . . . .   | 30 x 20   | 4.50    |
|       | <i>By Andrea della Robbia</i><br>Original of enamelled terra-cotta in the portico of the Academy of Fine Arts, Florence.  |           |         |
| 8390  | Two Reliefs . . . . .   | 18 x 64   | 10.00   |
| 8390A |   | 18 x 64   | 15.00   |
|       | <i>By Ghiberti</i><br>From San Zanobia's Monument, in the Duomo, Florence.  |           |         |
| 8391  | Madonna and Child . . . . .   | 28 x 28   | 5.00    |
|       | <i>By Benedetto da Maiano</i><br>From the Monument of Filippo Strozzi, in Santa Maria Novella, Florence.  |           |         |
| 8395  | Madonna and Child . . . . .   | 21 x 27   | 4.00    |
|       | <i>By Donatello</i>   |           |         |
| 8396  | Madonna and Child . . . . .   | 14 x 16½  | 2.00    |
|       | <i>By Donatello</i>   |           |         |
| 8397  | St. John, high relief . . . . .   | 10 x 20   | 2.50    |
|       | <i>By Donatello</i><br>Original of gray stone, in the Bargello, Florence.   |           |         |
| 8398  | St. Cecilia, in low relief . . . . .  | 16 x 22   | 2.50    |
|       | <i>By Donatello</i><br>In the collection of Lord Elcho, London.   |           |         |
| 8399  | St. John, high relief, oval top . . . . .   | 16 x 12   | 2.50    |
|       | <i>By Donatello</i><br>Original of blue stone, in Louvre.   |           |         |

Reliefs — Renaissance — *Continued.*

| No.   |  | Size, in. | Price.  |
|-------|--|-----------|---------|
| 8402  | Madonna and Child . . . . .  | 36 x 44   | \$10.00 |
|       | <i>By Rossellino</i><br>From the Neri Monument in the Church of Santa Croce, Florence.                                 |           |         |
| 8403  | Cherub playing on Pipe . . . . .   | 9 x 23    | 2.50    |
|       | <i>By Donatello</i>  |           |         |
| 8403A | Cherub playing on Pipe . . . . .   | 8 x 23    | 2.50    |
|       | <i>By Donatello</i>  |           |         |
| 8404  | Cherub playing on Double Pipe . . . . .  | 8 x 23    | 2.50    |
|       | <i>By Donatello</i>  |           |         |
| 8404A | Cherub playing on Violin . . . . .   | 8 x 23    | 2.50    |
|       | <i>By Donatello</i>  |           |         |
| 8405  | Cherub playing on Double Pipe . . . . .  | 8 x 23    | 2.50    |
|       | <i>By Donatello</i>  |           |         |
| 8405A | Cherub playing on Lyre . . . . .   | 8 x 23    | 2.50    |
|       | <i>By Donatello</i>  |           |         |
| 8406  | Cherubs singing from a Book . . . . .  | 8 x 23    | 2.50    |
|       | <i>By Donatello</i>  |           |         |
| 8406A | Cherubs singing from a Book . . . . .  | 8½ x 23   | 2.50    |
|       | <i>By Donatello</i>  |           |         |
| 8407  | Cherub playing on Cymbals . . . . .  | 8½ x 23   | 2.50    |
|       | <i>By Donatello</i>  |           |         |
| 8407A | Cherub playing on Cymbals . . . . .  | 8½ x 23   | 2.50    |
|       | <i>By Donatello</i>  |           |         |
| 8408  | Cherub playing on Cymbals . . . . .  | 8½ x 23   | 2.50    |
|       | <i>By Donatello</i>  |           |         |
| 8408A | Cherub playing on Mandolin . . . . .   | 8 x 23    | 2.50    |
|       | <i>By Donatello</i><br>The above twelve reliefs, by Donatello, are from San Antonio Altar, Padua; originals of bronze. |           |         |
| 8411  | Madonna and Child . . . . .  | 33 x 33   | 5.00    |
|       | <i>By Michelangelo</i><br>Original in the Bargello, Florence.  |           |         |
| 8415  | Nativity . . . . .   | 46 x 46   | 12.00   |
|       | <i>By Antonio Rossellino</i><br>Original in the Bargello, Florence.  |           |         |
| 8416  | Holy Family . . . . .  | 39 x 39   | 10.00   |
|       | <i>By Michelangelo</i><br>Original in the Royal Academy, London.   |           |         |
| 8417  | Dante Alighieri . . . . .  | 22 x 25   | 3.50    |
|       | <i>By Pietro Lombardi</i><br>From the tomb at Ravenna.   |           |         |
| 8422  | Shield, with Eagle, Florentine . . . . .   | 15 x 22   | 2.00    |
|       |  |           |         |
| 8423  | Shield, with Fleur-de-lis, Florentine . . . . .  | 15 x 22   | 2.00    |
|       |  |           |         |
| 8444  | Bambino, head. <i>Fragment of 8360</i> . . . . .   | 15½ x 12½ | 2.50    |
| 8445  | Bambino, head. <i>Fragment of 8361</i> . . . . .   | 15½ x 12½ | 2.50    |
| 8446  | Bambino, head. <i>Fragment of 8362</i> . . . . .   | 15½ x 12½ | 2.50    |
| 8447  | Bambino, head. <i>Fragment of 8363</i> . . . . .   | 15½ x 12½ | 2.50    |
|       | MEDIUM REDUCTIONS.   |           |         |
| 9300  | Boys singing from Book. <i>Reduction of 8350</i> . . . . .   | 15 x 20   | 4.00    |
| 9301  | Boys singing from Scroll. <i>Reduction of 8355</i> . . . . .   | 15 x 20   | 4.00    |
| 9302  | Boys playing Trumpets. <i>Reduction of 8351</i> . . . . .  | 20 x 18½  | 6.00    |
| 9303  | Boys playing on Drums. <i>Reduction of 8354</i> . . . . .  | 20 x 18½  | 6.00    |
|       | SMALL REDUCTIONS AND FRAGMENTS.  |           |         |
| 9595  | Boys singing from Book. <i>Reduction of 8350</i> . . . . .   | 7 x 10¼   | 1.50    |
| 9596  | Boys singing from Scroll. <i>Reduction of 8355</i> . . . . .   | 7 x 10¼   | 1.50    |
| 9597  | Boys playing Trumpets. <i>Reduction of 8351</i> . . . . .  | 10 x 10¼  | 1.50    |
| 9598  | Boys playing on Drums. <i>Reduction of 8354</i> . . . . .  | 10 x 10¼  | 1.50    |
| 9599  | Girls playing on Lyres. <i>Reduction of 8352</i> . . . . .   | 10 x 10¼  | 1.50    |
| 9600  | Girls playing on Lutes. <i>Reduction of 8353</i> . . . . .   | 10 x 10   | 1.50    |

## RELIEFS—MODERN.

| No.   | ORIGINAL SIZE.  | Size, in. | Price. |
|-------|---|-----------|--------|
| 10002 | Cupids, heads, three. <i>Fragment of 10041</i>  | 12 x 20   | \$3.00 |
| 10003 | Mercury carrying Pandora to Prometheus.<br><i>By Flaxman</i>  | 28 x 32   | 8.00   |
| 10005 | Alexandrian Procession . . . . .<br><i>By Thorwaldsen</i>   | 29½ x 63  | 18.00  |
| 10006 | Apollo and the Muses . . . . .<br><i>By Thorwaldsen</i>   | 29 x 63   | 18.00  |
| 10007 | Triumph of Alexander . . . . .<br><i>By Thorwaldsen</i>   | 24 x 159  | 25.00  |
| 10009 | Flight of Night (copyrighted).<br><i>By William M. Hunt</i>   | 19½ x 29½ | 12.00  |
|       | Originally designed for the Capitol at Albany, N. Y.  |           |        |
| 10012 | Phalanthus and Æthra . . . . .<br><i>By Giraud</i><br>Original in the Ecole Nationale des Beaux-Arts, Paris.                                | 23 x 32½  | 5.00   |
| 10014 | Nymph . . . . .<br><i>By Jean Goujon</i>  | 25 x 93   | 25.00  |
| 10015 | Nymph . . . . .<br><i>By Jean Goujon</i>  | 25 x 93   | 25.00  |
| 10016 | Nymph . . . . .<br><i>By Jean Goujon</i>  | 25 x 93   | 25.00  |
| 10017 | Nymph . . . . .<br><i>By Jean Goujon</i>  | 25 x 93   | 25.00  |
| 10018 | Nymph . . . . .<br><i>By Jean Goujon</i>  | 25 x 93   | 25.00  |
| 10019 | Nymph . . . . .<br><i>By Jean Goujon</i>  | 25 x 93   | 25.00  |
|       | The above six reliefs by Goujon are from the Fountain of the Innocents, Paris.  |           |        |
| 10028 | Cupid . . . . .<br><i>From the Tomb of Henry IV.</i>  | 21 x 18   | 2.50   |
| 10029 | Cupid . . . . .<br><i>From the Tomb of Henry IV.</i>  | 21 x 18   | 2.50   |
| 10030 | Aurora (Apollo in a chariot) . . . . .  | 18 x 37   | 4.00   |
| 10035 | Morning . . . . .<br><i>By Thorwaldsen</i>  | 33 x 33   | 6.00   |
| 10036 | Night . . . . .<br><i>By Thorwaldsen</i>  | 33 x 33   | 6.00   |
| 10041 | Cupids singing . . . . .<br><i>By Giovanni da Bologna</i><br>Called Il Fiamingo (1530-1608).  | 33½ x 89  | 30.00  |
| 10042 | Cupids singing. <i>Fragment of 10041</i>  | 20 x 31½  | 6.00   |
| 10043 | Meeting of Henry VIII. and Francis I. on the Field of the Cloth of Gold<br>Original of stone in the Hotel de Bourgtheroulde, Rouen, France. | 33 x 93   | 25.00  |
| 10044 | Declaration of American Independence, July 4, 1776<br>Modelled by Thomas Ball from the painting by J. Trumbull in Yale University.          | 32 x 38   | 10.00  |
| 10045 | Treaty of Peace and Independence, Sept. 3, 1783<br><i>By Thomas Ball</i>  | 32 x 38   | 10.00  |
|       | The above two reliefs are from the pedestal of the statue of Franklin in front of City Hall, Boston.  |           |        |
|       | MEDIUM SIZE AND REDUCTIONS.   |           |        |
| 10660 | Harvesters; a group of children, merrymaking . . . . .  | 13 x 31   | 5.00   |
| 10661 | Cupids, singing . . . . .<br><i>By Fiamingo</i>   | 13 x 40   | 5.00   |
|       | This is also made in three sections, as follows:—   |           |        |
|       | Section A . . . . .   | 10½ x 11  | 1.50   |
|       | Section B . . . . .   | 12 x 16   | 2.00   |
|       | Section C . . . . .   | 10 x 11   | 1.50   |

## Reliefs—Modern—Continued.

| No.   |   | Size, in. | Price. |
|-------|---|-----------|--------|
| 10662 | Market of Loves . . . . .<br><i>By Thorwaldsen</i>        | 13½ x 35  | \$5.00 |
| 10663 | Apollo and the Muses. <i>Reduction of 10006</i>           | 15 x 31   | 5.00   |
| 10681 | Mozart . . . . .<br><i>By Walton Ricketson</i>            | 15 x 19   | 3.00   |
| 10682 | Beethoven . . . . .<br><i>By Walton Ricketson</i>         | 15 x 19   | 3.00   |
| 10683 | Aurora . . . . .  | 12 x 23   | 2.00   |
| 10684 | Savonarola, medallion . . . . .<br><i>By Robert Kraus</i> | 13 x 13   | 1.50   |
| 10688 | Cupid, head on panel. <i>Fragment of 10041</i>            | 6 x 11    | 1.50   |
| 10700 | Cupid, head. <i>Fragment of 10041</i>                     | 12 x 9    | 1.50   |

## ARMOR AND SHIELDS.

|       |   |           |        |
|-------|---|-----------|--------|
| 12607 | Trojan Shield . . . . .   | 23 x 30½  | \$4.00 |
| 12608 | Shield . . . . .<br><i>By Cellini</i>   | 25 x 17½  | 2.50   |
| 12609 | Shield . . . . .<br><i>By Cellini</i>   | 25½ x 19¼ | 2.50   |
| 12610 | Milton Shield . . . . .<br><i>By Morel Ladeuil</i><br>Original in the Museum of Science and Art, South Kensington, England. The subjects selected for illustration in this shield were taken from Milton's "Paradise Lost," 6th book. | 34 x 26   | 6.00   |
| 12612 | Shield, Judgment of Paris . . . . .   | 24        | 4.00   |
| 12613 | Shield of Medusa . . . . .  | 24        | 4.00   |

THE ABOVE CAN BE FURNISHED EITHER IN THE IVORY TINT OR STEEL BRONZE FINISH.

## ANIMALS.

|       |   |   |        |
|-------|---|---|--------|
| 12806 | Lion, walking. <i>By Barye.</i> Length of base 16 ins.  | 9 | \$2.00 |
| 12819 | Tiger, walking. <i>By Barye.</i> Length of base 16 ins. | 9 | 2.00   |
| 12999 | Eagle, antique . . . . .<br><i>In the Vatican</i>       | 4 | 15.00  |

## HISTORICAL ORNAMENTS.

|       |   |         |         |
|-------|---|---------|---------|
| 18900 | Frieze. Two Cherubs with Vase . . . . .<br>From the Trajan Forum, Rome. | 46 x 80 | \$25.00 |
| 18901 | Frieze. Cherub and Griffin . . . . .<br>From the Trajan Forum, Rome.    | 46 x 65 | 25.00   |



PAGE I.

CAPRONI'S GALLERIES, AT THE ENTRANCE.



PAGE III.

CAPRONI'S GALLERIES, MAIN HALL.



PLATE XIII.

CAPRONI'S GALLERIES, CORNER OF ARCHITECTURAL ROOM.

## A FEW SMALL CASTS FOR HOME DECORATION.



1546      1547      1548      1549      1550



1551      1552      1553      1554



1555      1556      1557      1558

TANAGRA FIGURINES.



6253



6272

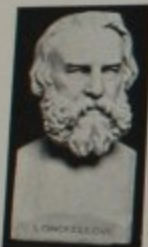


6275

6276

6277

6278



6279



6280



6282



6285



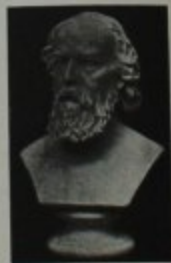
6287



6289



6290



6291



6294

6295



6298



6299

RELIEFS — RENAISSANCE.  
SMALL REDUCTIONS AND FRAGMENTS.

9605



9608



9609



9610, 9610A



9611



9612



9613



9614



9615



9616



9617



9619



9620



9621



9622



9623



9624



9625



9626



9526A



9626B



CATALOGUE OF  
RELIEFS—MODERN  
SMALL RELIEFS AND REDUCTIONS



10672



10673



10674



10675



10676



10677



10678



10687



10688



10696



10697



11001

11002



11003



11005



11006



11007



11008



11009



11014



11014A



11020



11021



11023



11024



11025, 11026



11027



11028



11029, 11030



11031



11032



11033, 11035



11034, 11036



11037



11038



11039



11042



11049



11050



11046A



11046B



11046C



11046D



11046E



11046F



12800



12805



12823



12807



12816



12817



12808



12815



13011



13012



13013



13008



13009



13010



13024

- 1546 to 1552 Tanagra Figurines
- 1553 to 1558 Tanagra Figurines
- 6253 Dante
- 6272 Emerson
- 6275 Schiller
- 6276 Schiller
- 6277 Goethe
- 6278 Goethe
- 6279 Longfellow
- 6280 Lincoln
- 6282 Mercury
- 6285 Shakespeare
- 6287 Scott
- 6289 Liszt
- 6290 Liszt

|                | Size. | Ft. | In. | Price. |
|----------------|-------|-----|-----|--------|
| Each           |       | 10  |     | \$1.50 |
| Each           |       | 8   |     | 1.00   |
| By Morse       |       | 1   | 3   | 1.50   |
|                |       | 1   | 7   | 1.00   |
|                |       | 1   | 7   | 1.50   |
|                |       | 1   | 7   | 1.00   |
| By Milmore     |       | 1   | 2   | 2.00   |
| By Thorvaldsen |       | 1   | 10  | 1.50   |
|                |       | 1   |     | 1.50   |
|                |       | 1   |     | 1.50   |
| By Boehm       |       | 1   | 11  | 2.00   |
|                |       | 1   |     | 1.50   |

| No.            | Description                            | By  | Size   |          | Price |
|----------------|--|---|--------|----------|-------|
|                |  |   | Ht.    | Ln.      |       |
| 8291           | Tombston                               |   | 1      | 6        | 2.00  |
| 8292           | Washington                             |   | 1      | 1        | 2.00  |
| 8293           | Lincoln                                |   | 1      | 2        | 2.00  |
| 8294           | Wagner                                 |   | 1      | 2 1/2    | 2.00  |
| 8295           | Handel                                 |   |        |          | 1.00  |
|                |  | <i>By Donatello</i>                           | 5      | 8 1/2    | .75   |
| 9101           | Madonna and Child                      | <i>By Andrea della Robbia</i>                 | 7      | 8 2      | .50   |
| 9102           | Cupid                                  | <i>By Andrea della Robbia</i>                 | 7      | 8 2      | .50   |
| 9103           | Cupid                                  | <i>Fragment of 8278</i>                       | 0      | 8 1 1/2  | 1.50  |
| 9104           | Choir Boys                             |   | 7      | 8 8      | .50   |
| 9105           | Choir Boys                             | <i>Fragment of 8278</i>                       | 7      | 8 18     | 1.00  |
| 9106           | Cupid                                  | <i>By Andrea della Robbia</i>                 | 8      | 8 11     | .75   |
| 9107           | Cupid                                  | <i>By Pierino da Vinci</i>                    | 11     | 8 12     | 1.50  |
| 9108           | Madonna                                |   | 9      | 8 13     | 1.00  |
| 9109           | Lion, rampant                          | <i>After Botticelli</i>                       | 6      | 8 9      | .75   |
| 9110           | Madonna                                | <i>By Matteo Civitelli</i>                    | 7      | 8 10 1/2 | 1.50  |
| 9111           | Portrait                               | <i>By Matteo Civitelli</i>                    | 7      | 8 10 1/2 | 1.50  |
| 9112           | Portrait                               | <i>By Andrea della Robbia</i>                 | 6      | 8 12     | 1.00  |
| 9113           | Madonna                                | <i>By Donatello</i>                           | 12 1/2 | 8 10     | 2.00  |
| 9114           | Lion, rampant                          |   | 8 1/2  | 8 12     | 1.00  |
| 9115           | Lion, rampant                          |   | 5      | 8 8 1/2  | .75   |
| 9116           | Lion, rampant                          |   | 5 1/2  | 8 8      | .75   |
| 9117           | Lion, rampant                          |   | 5      | 8 6 1/2  | .50   |
| 9118           | Lion, rampant                          |   | 5      | 8 12     | 1.00  |
| 9119           | Griffin                                | <i>By Michelangelo</i>                        | 5 1/2  | 8 6      | .50   |
| 9120           | Faun, Head of                          | <i>By Michelangelo</i>                        | 5 1/2  | 8 6      | .50   |
| 9121           | Faun, Head of                          | <i>By Michelangelo</i>                        | 4      | 8 6      | .25   |
| 9122           | Faun, Head of                          | <i>By Goujon, Koch</i>                        | 6      | 8 20     | 1.50  |
| 10672 to 10678 | Nymphs                                 |   | 7      | 8 12 1/2 | 1.50  |
| 10679          | Cow and Calf                           |   | 7      | 8 12 1/2 | 1.50  |
| 10680          | Bull                                   | <i>By Bouchardon</i>                          | 7      | 8 12     | 1.50  |
| 10681          | Winter                                 |   | 10     | 8 15     | 2.00  |
| 10682          | Easter                                 |   | 4 1/2  | 8 6      | 1.00  |
| 11001          | Cupids, dancing                        |   | 4 1/2  | 8 6      | 1.00  |
| 11002          | Cupids, dancing                        | (from ivory carvings in the Museum at Munich) | 6      | 8 12     | 1.00  |
| 11003          | Cupids and Satyr                       | <i>By Thorvaldsen</i>                         | 8      | 8 10     | .75   |
| 11004          | Cupid and Venus                        | <i>By Thorvaldsen</i>                         | 5      | 8 5      | .35   |
| 11005          | Lion of Lucerne                        | <i>By Thorvaldsen</i>                         | 10     | 8 10     | .75   |
| 11006          | Science trimming Lamp of Life          | <i>By Thorvaldsen</i>                         | 6      | 8 11     | .75   |
| 11007          | Young Musicians                        | <i>By Thorvaldsen</i>                         | 6 1/2  | 8 6 1/2  | .35   |
| 11008          | Young Musicians                        | <i>By Thorvaldsen</i>                         | 4 1/2  | 8 9      | .50   |
| 11009          | Young Musicians                        | <i>By Thorvaldsen</i>                         | 4 1/2  | 8 9      | .50   |
| 11010          | Genius of Art                          | <i>By Goujon</i>                              | 7      | 8 12     | 1.00  |
| 11011          | Sculptor, Young                        | <i>By Goujon</i>                              | 7      | 8 12     | 1.00  |
| 11012          | Infants playing                        |   | 5      | 8 3 1/2  | .25   |
| 11013          | Infants playing                        |   | 5      | 8 3 1/2  | .25   |
| 11014          | Cupids, dancing                        |   | 5      | 8 3 1/2  | .25   |
| 11015          | Satyr, dancing                         | <i>After Millet</i>                           | 8      | 8 11     | 1.00  |
| 11016          | Sower                                  | <i>After Millet</i>                           | 6      | 8 4      | .25   |
| 11017          | Sower                                  | <i>After Millet</i>                           | 6      | 8 4      | .25   |
| 11018          | Digger                                 |   | 10     | 8 8      | 1.00  |
| 11019          | Napoleon Bonaparte                     |   | 11     | 8 12 1/2 | 1.00  |
| 11020          | Cupid, flying                          |   | 10     | 8 10     | .75   |
| 11021          | Cupid (without panel)                  |   | 10     | 8 10     | 1.00  |
| 11022          | Minerva                                |   | 10     | 8 10     | 1.00  |
| 11023          | Mars                                   |   | 6 1/2  | 8 9 1/2  | .50   |
| 11024          | Hebe, bearing cup                      |   | 6 1/2  | 8 9 1/2  | .50   |
| 11025          | Hebe, bearing cup                      |   | 3 1/2  | 8 5      | .25   |
| 11026          | Hebe, bearing cup                      |   | 3 1/2  | 8 5      | .25   |
| 11027          | Hebe, bearing cup                      |   | 5 1/2  | 8 9      | .50   |
| 11028          | Spring and Autumn                      |   | 11     | 8 11     | 1.00  |
| 11029          | Bacchante playing on Flute             | <i>After Sir Joshua Reynolds</i>              | 4      | 8 8      | .50   |
| 11030          | Angels                                 |   | 3      | 8 3      | .25   |
| 11031          | Infant Bacchus                         | <i>By Fiamingo. Each</i>                      | 4 1/2  | 8 6 1/2  | .50   |
| 11032          | Feast of Bacchus, six reliefs, A to F. |   | 9 1/2  | 8 9 1/2  | .75   |
| 11033          | Apollo in a Chariot                    |   | 11 1/2 | 8 11 1/2 | 1.00  |
| 11034          | Paradise Lost                          |   | Height | 9        | 1.50  |
| 12800          | Bear, dancing                          | <i>By Barye</i>                               | "      | 6        | 2.00  |
| 12801          | Elephant                               | <i>By Barye</i>                               | "      | 5        | 1.00  |
| 12802          | Lion                                   | <i>By Barye</i>                               | "      | 8 1/2    | 1.00  |
| 12803          | Lion                                   | <i>By Barye</i>                               | "      | 3 1/2    | .25   |
| 12804          | Rabbit                                 | <i>By Barye</i>                               | "      | 1 1/2    | .25   |
| 12805          | Rabbit                                 | <i>By Barye</i>                               | "      | 1 1/2    | .25   |
| 12806          | Rabbit                                 | <i>By Barye</i>                               | "      | 6        | 2.00  |
| 12807          | Rabbit                                 | <i>By Barye</i>                               | "      | 5 1/2    | 1.25  |
| 13008          | Lion of Lucerne                        | <i>By Thorvaldsen</i>                         | "      | 4 1/2    | 1.00  |
| 13009          | Lion of Lucerne                        | <i>By Thorvaldsen</i>                         | "      | 2        | .50   |
| 13010          | Lion of Lucerne                        | <i>By Fremiet</i>                             | "      | 4        | .50   |
| 13011          | Rabbit                                 | <i>By Fremiet</i>                             | "      | 3 1/2    | .25   |
| 13012          | Cat                                    | <i>By Fremiet</i>                             | "      | 4        | .50   |
| 13013          | Cock                                   | <i>By Fremiet</i>                             | "      | 3        | .25   |
| 13014          | Hen                                    | <i>By Fremiet</i>                             | "      | 3        | .25   |

In the Service of the State Board of Education  
**HENRY TURNER BAILEY**  
 Agent for the promotion of Industrial Drawing.

North Scituate, Massachusetts  
 September 1, 1901

P. P. Caproni & Bro.

Gentlemen:—Allow me to thank you heartily for a copy of your catalogue, and to congratulate you on its appearance. This is much more convenient in form, and in every way a more artistic production, than anything previously produced. This is a book to stand upon one's library shelves with the Histories of Art.

Cordially yours,

(Signed) HENRY T. BAILEY



A large number of these illustrated catalogues have been purchased by Public Libraries, to be used as a reference book in their art departments.

