

**PC10-2 S/N 4501-UP
KOMATSU PC10-2 S/N 4501-UP**

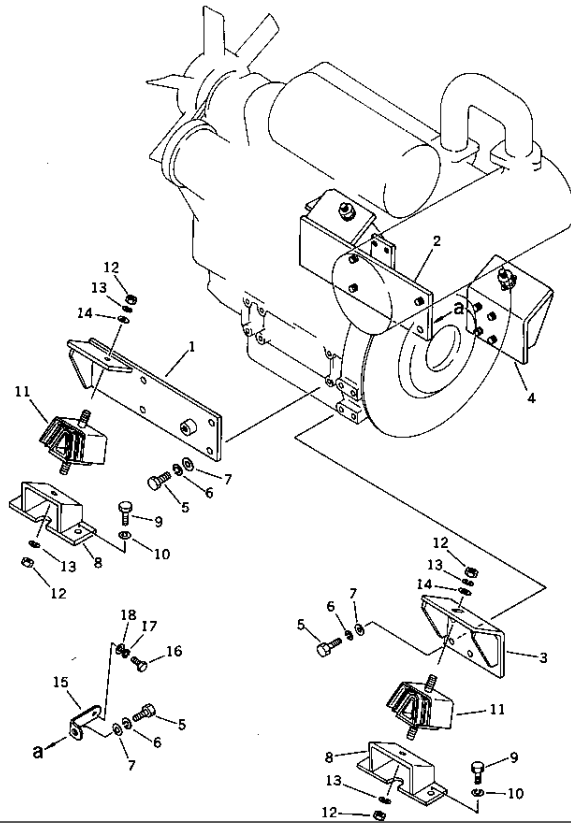
Item	Description	Book	Page
	3D75-1A ENGINE S/N 01001-UP	3d75-1ar	
10	ENGINE RELATED PARTS AND ELECTRICAL SYSTEM		030000
20	TRAVEL AND FINAL DRIVE		060000
30	UNDER CARRIAGE		090000
40	SWING SYSTEM		120000
50	REVOLVING FRAME AND CAB		150000
60	HYDRAULIC SYSTEM		180000
70	WORK EQUIPMENT		210000
80	OPTIONAL PARTS		240000
90	TOOL AND KIT		270000

PC10-2 S/N 4501-UP
ENGINE RELATED PARTS AND ELECTRICAL SYSTEM

Item	Description	Qty	Page
10	ENGINE MOUNTING PARTS	1	030010
20	ENGINE RELATED PARTS	1	030020
30	POWER TAKE OFF	1	030030
40	FUEL CONTROL LEVER	1	030040
50	RADIATOR	1	030050
60	FUEL TANK AND PIPING	1	030060
70	BATTERY	1	030070
80	INSTRUMENT PANEL	1	030080
90	ELECTRICAL SYSTEM	1	030090

PC10-2 S/N 4501-UP

Fig. 1101 ENGINE MOUNTING PARTS



Ref. 1101

Page 030010

PC10-2 S/N 4501-UP ENGINE MOUNTING PARTS

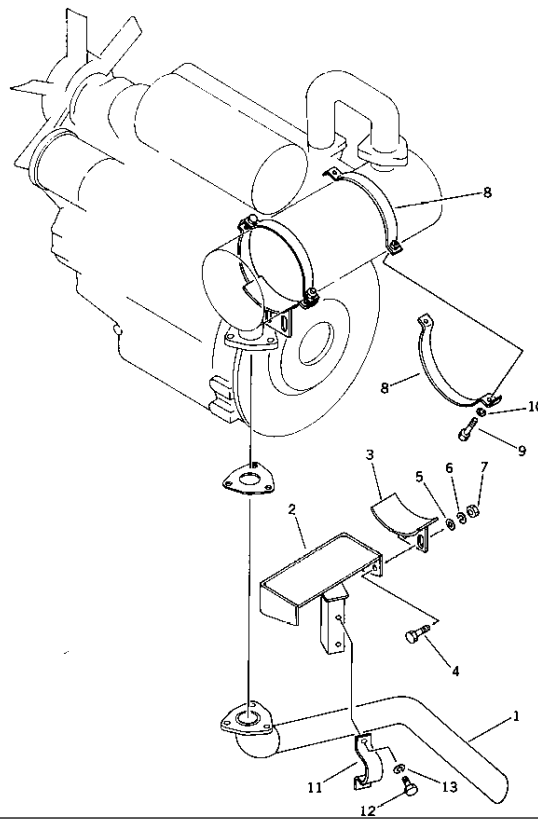
Item	Part No.	Description	Qty	Options
1	20N-01-23140	BRACKET,L.H.	1	SN:4501--
2	20N-01-23130	BRACKET,R.H.	1	SN:4501--
3	20N-01-23120	BRACKET,L.H.	1	SN:4501--
4	20N-01-23110	BRACKET,R.H.	1	SN:4501--
5	01010-31230	BOLT	16	SN:4501--
6	01602-01236	WASHER,SPRING	16	SN:4501--
7	01642-21216	WASHER	16	SN:4501--
8	20N-01-23150	BRACKET	3	SN:4501--
9	01010-31230	BOLT	6	SN:4501--
10	01602-01236	WASHER,SPRING	6	SN:4501--
11	20N-01-23410	CUSHION	4	SN:4501--
12	01580-01210	NUT	8	SN:4501--
13	01602-01236	WASHER,SPRING	8	SN:4501--
14	01643-31232	WASHER	4	SN:4501--
15	20N-01-23160	PLATE	1	SN:4501--
16	01010-30820	BOLT	1	SN:4501--
17	01602-00825	WASHER,SPRING	1	SN:4501--
18	01643-30823	WASHER	1	SN:4501--

Ref. 1101

Page 030010

PC10-2 S/N 4501-UP

Fig. 1102 エンジン関連部品 ENGINE RELATED PARTS



Ref. 1102

Page 030020

PC10-2 S/N 4501-UP
ENGINE RELATED PARTS

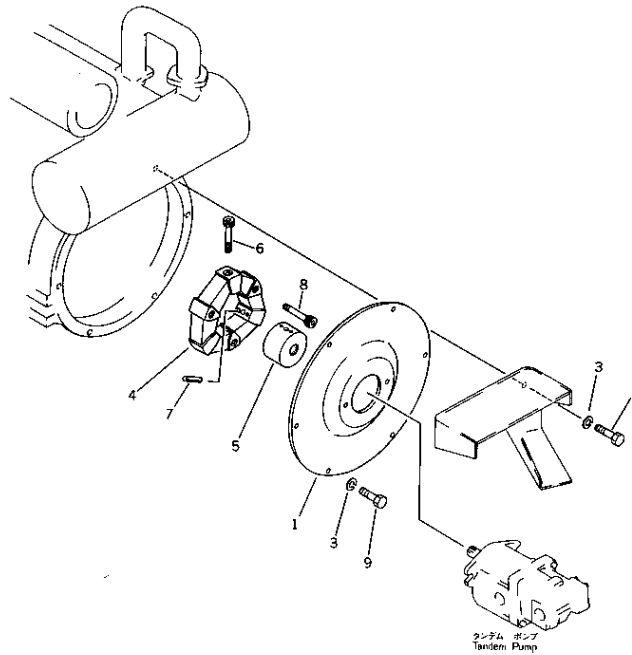
Item	Part No.	Description	Qty	Options
1	20N-01-22141	PIPE	1	SN:4501--
2	20N-01-22160	BRACKET	1	SN:4501--
3	20N-01-27210	BRACKET	1	SN:--
	□20R-01-27210	BRACKET	1	SN:4501--
4	01010-31025	BOLT	4	SN:4501--
5	01643-31032	WASHER	4	SN:4501--
6	01602-01030	WASHER,SPRING	4	SN:4501--
7	01580-01008	NUT	4	SN:4501--
8	20R-01-27220	CLAMP	4	SN:4501--
9	01010-30835	BOLT	4	SN:4501--
10	01602-00825	WASHER,SPRING	4	SN:4501--
11	20N-01-22180	CLAMP	1	SN:4501--
12	01010-31020	BOLT	2	SN:4501--
13	01602-01030	WASHER,SPRING	2	SN:4501--

Ref. 1102

Page 030020

PC10-2 S/N 4501-UP

Fig. 1105 POWER TAKE OFF



Ref. 1105

Page 030030

PC10-2 S/N 4501-UP
POWER TAKE OFF

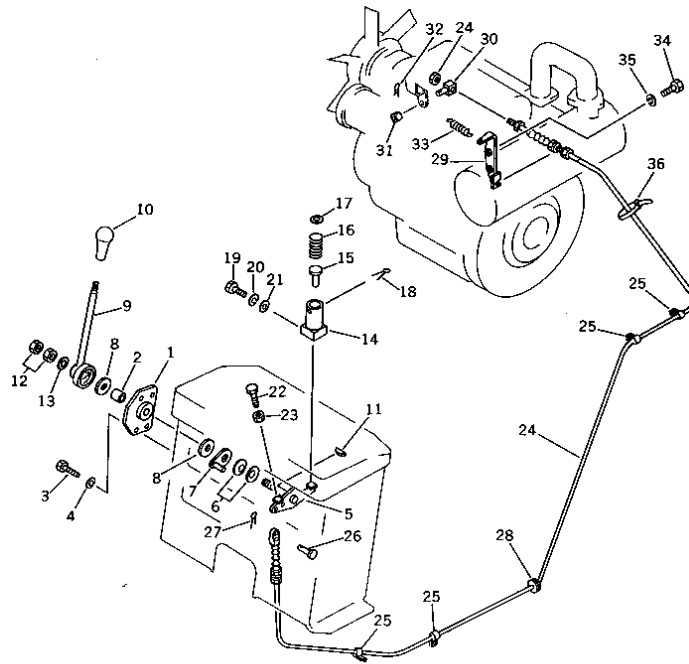
Item	Part No.	Description	Qty	Options
1	20R-01-28110	COVER	1	SN:4501--
2	01010-31025	BOLT	2	SN:4501--
3	01602-01030	WASHER, SPRING	6	SN:4501--
	20R-01-28200	COUPLING ASS'Y	1	SN:4501--
4	20R-01-11210	· RUBBER	1	SN:4501--
5	20N-01-12160	· BOSS	1	SN:4501--
6	01252-41030	· BOLT	3	SN:4501--
7	04025-00408	· PIN, SPRING	6	SN:4501--
8	01252-41035	BOLT	3	SN:4501--
9	01010-31020	BOLT	4	SN:4501--

Ref. 1105

Page 030030

PC10-2 S/N 4501-UP

Fig. 1121 FUEL CONTROL LEVER



Ref. 1121

Page 030040

PC10-2 S/N 4501-UP
FUEL CONTROL LEVER

Item	Part No.	Description	Qty	Options
	20N-43-00400	BRACKET ASS'Y	1	SN:4501--
1	☆	· BRACKET	1	SN:4501--
2	09350-01420	· BUSHING	1	SN:4501--
3	01010-31025	BOLT	4	SN:4501--
4	01602-01030	WASHER,SPRING	4	SN:4501--
5	20N-43-24120	SHAFT	1	SN:4501--
6	101-854-9355	SPRING	2	SN:4501--
7	20N-43-24130	PLATE	1	SN:4501--
8	10E-43-11160	FACING	2	SN:4501--
9	20N-43-24140	LEVER	1	SN:4501--
10	113-43-23420	KNOB	1	SN:4501--
11	04010-00516	KEY	1	SN:4501--
12	01583-11207	NUT	2	SN:4501--
13	01640-21223	WASHER	2	SN:4501--
14	124-43-21150	HOLDER	1	SN:4501--
15	124-43-21160	PIN	1	SN:4501--
16	124-43-21170	SPRING	1	SN:4501--
17	01642-21216	WASHER	1	SN:4501--
18	04050-16045	PIN,COTTER	1	SN:4501--
19	01010-30620	BOLT	2	SN:4501--
20	01602-00619	WASHER,SPRING	2	SN:4501--
21	01643-00623	WASHER	2	SN:4501--
22	01016-30830	BOLT	1	SN:4501--
23	01580-00806	NUT	1	SN:4501--
24	20N-43-24150	CABLE	1	SN:4501--
25	08036-10814	CLIP	4	SN:4501--
26	04205-10616	PIN	1	SN:4501--

Ref. 1121

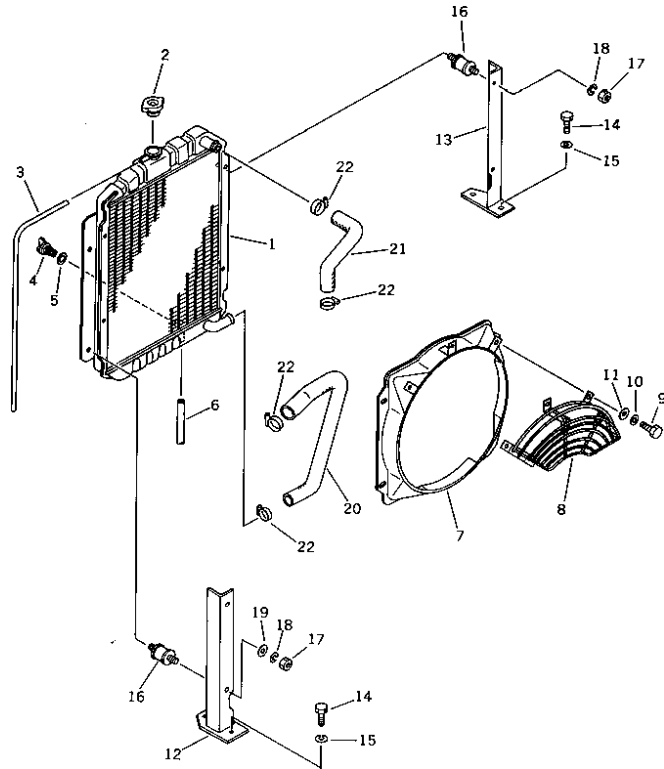
Page 030040

**PC10-2 S/N 4501-UP
FUEL CONTROL LEVER**

Item	Part No.	Description	Qty	Options
27	04050-11610	PIN,COTTER	1	SN:4501--
28	08037-02512	GROMMET	1	SN:4501--
29	20N-43-24170	BRACKET	1	SN:4501--
30	20N-43-24181	HOLDER	1	SN:4501--
31	20N-43-24220	STOPPER	1	SN:4501--
32	04052-01253	PIN	1	SN:4501--
33	20N-43-24210	SPRING	1	SN:4501--
34	01010-30625	BOLT	2	SN:4501--
35	01602-00619	WASHER,SPRING	2	SN:4501--
36	08034-00519	BAND	1	SN:4501--

PC10-2 S/N 4501-UP

Fig. 1131 RADIATOR



Ref. 1131

Page 030050

PC10-2 S/N 4501-UP
RADIATOR

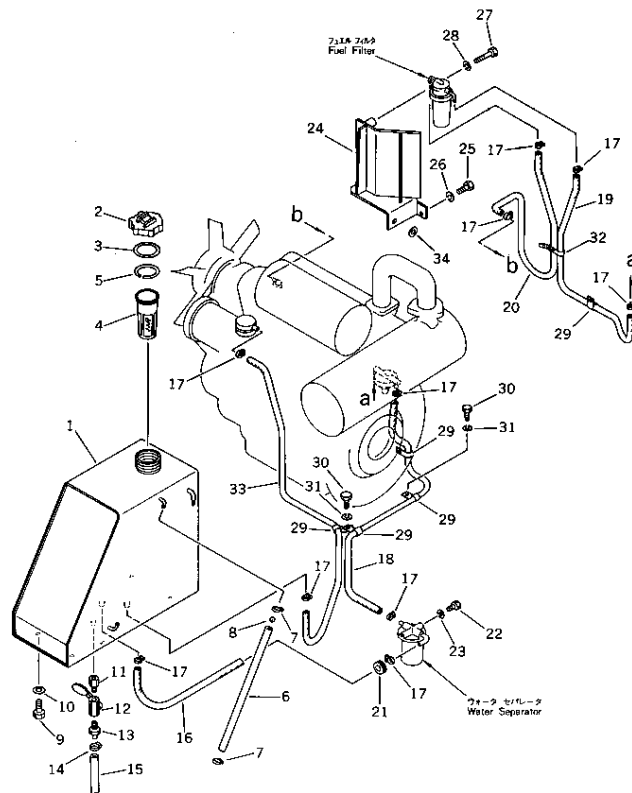
Item	Part No.	Description	Qty	Options
	20N-03-21100	RADIATOR ASS'Y	1	SN:4501--
1	20N-03-21110	· RADIATOR SUB ASS'Y	1	SN:4501--
2	20R-03-11220	· CAP	1	SN:4501--
3	07270-00870	· TUBE	1	SN:4501--
4	20N-03-11181	· PLUG,DRAIN	1	SN:4501--
5	07000-01007	· O-RING	1	SN:4501--
6	07270-00810	· TUBE	1	SN:4501--
7	20N-03-21120	· SHROUD	1	SN:4501--
8	20S-03-11242	· NET,WIRE	1	SN:4501--
9	01010-30820	· BOLT	7	SN:4501--
10	01602-00825	· WASHER,SPRING	7	SN:4501--
11	01641-00812	· WASHER	7	SN:4501--
12	20N-03-22130	BRACKET	1	SN:4501--
13	20N-03-22140	BRACKET	1	SN:4501--
14	01010-31025	BOLT	4	SN:4501--
15	01602-01030	WASHER,SPRING	4	SN:4501--
16	20R-03-11190	CUSHION	4	SN:4501--
17	01580-00806	NUT	4	SN:4501--
18	01602-00825	WASHER,SPRING	4	SN:4501--
20	20N-03-22120	HOSE	1	SN:4501--
21	20N-03-22110	HOSE	1	SN:4501--
22	07281-00419	CLAMP	4	SN:4501--

Ref. 1131

Page 030050

PC10-2 S/N 4501-UP

Fig. 1141 FUEL TANK AND PIPING



Ref. 1141

Page 030060

PC10-2 S/N 4501-UP
FUEL TANK AND PIPING

Item	Part No.	Description	Qty	Options
1	20N-04-00110	FUEL TANK ASS'Y	1	SN:4501--
	☆	· TANK,FUEL	1	SN:4501--
2	07050-20920	· CAP ASS'Y	1	SN:4501--
3	07050-20922	· · GASKET	1	SN:4501--
4	07056-16415	· STRAINER	1	SN:4501--
5	07057-03266	· RING	1	SN:4501--
6	07270-01038	· TUBE	1	SN:4501--
7	07281-00167	· CLAMP	2	SN:4501--
8	20R-04-21210	· BALL,FLOAT	1	SN:4501--
9	01010-31225	BOLT	4	SN:4501--
10	01605-11226	WASHER	4	SN:4501--
11	113-04-23110	NIPPLE	1	SN:4501--
12	07700-40240	VALVE,DRAIN	1	SN:4501--
13	113-04-22150	NIPPLE	1	SN:4501--
14	07270-01215	TUBE	1	SN:4501--
15	07281-00167	CLAMP	1	SN:4501--
16	20N-04-22110	HOSE	1	SN:4501--
17	07281-00137	CLAMP	10	SN:4501--
18	20N-04-22120	HOSE	1	SN:4501--
19	FF7820-04170	TUBE	1	SN:4501--
20	20N-04-22190	HOSE	1	SN:4651--
	□20N-04-22140	HOSE	1	SN:4501--4650
21	08037-02512	GROMMET	1	SN:4501--
22	01010-30865	BOLT	1	SN:4501--
23	01602-00825	WASHER,SPRING	1	SN:4501--
24	20N-04-22130	BRACKET	1	SN:4501--
25	01010-30616	BOLT	1	SN:4501--

Ref. 1141

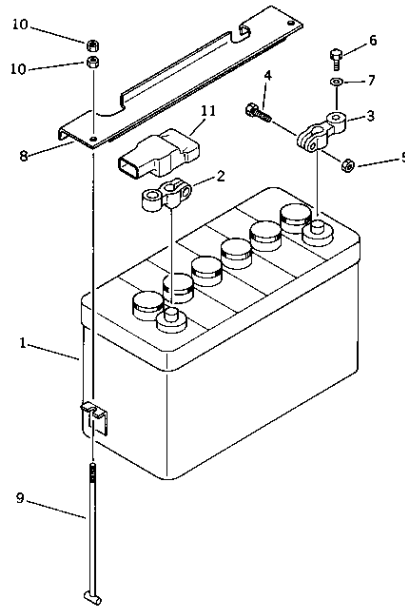
Page 030060

**PC10-2 S/N 4501-UP
FUEL TANK AND PIPING**

Item	Part No.	Description	Qty	Options
26	01602-00619	WASHER,SPRING	1	SN:4501--
27	01010-30865	BOLT	1	SN:4501--
28	01602-00825	WASHER,SPRING	1	SN:4501--
29	08036-01414	CLIP	5	SN:4501--
30	01010-31020	BOLT	2	SN:4501--
31	01602-01030	WASHER,SPRING	2	SN:4501--
32	08034-00414	BAND	1	SN:4501--
33	20N-04-22160	HOSE	1	SN:4501--
34	01643-31032	WASHER	1	SN:4501--

PC10-2 S/N 4501-UP

Fig. 1151 BATTERY



Ref. 1151

Page 030070

PC10-2 S/N 4501-UP
BATTERY

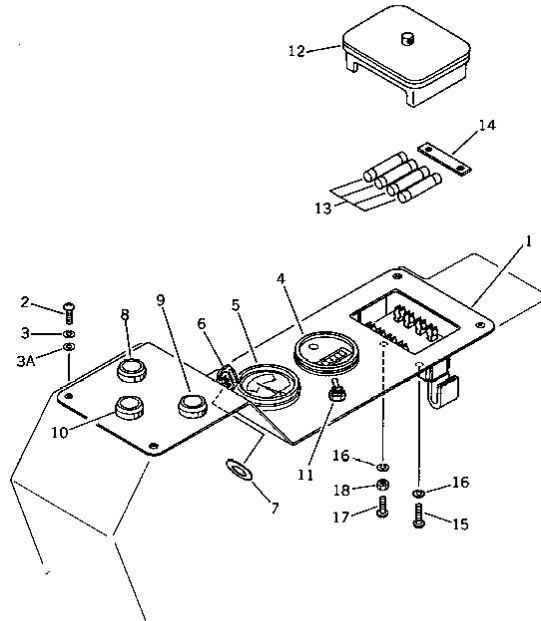
Item	Part No.	Description	Qty	Options
1	08000-01208	BATTERY (75D31R)	1	SN:4501--
2	08000-00000	TERMINAL \square (+)	1	SN:4501--
3	08000-00001	TERMINAL \square (-)	1	SN:4501--
4	01010-30830	· BOLT	2	SN:4501--
5	01580-00806	· NUT	2	SN:4501--
6	01050-31018	· BOLT	2	SN:4501--
7	01640-01016	· WASHER	2	SN:4501--
8	20R-06-11120	HOLDER	1	SN:4501--
9	101-06-21290	BOLT	2	SN:4501--
10	01580-00806	NUT	4	SN:4501--
11	201-06-21320	CAP,TERMINAL	1	SN:4501--

Ref. 1151

Page 030070

PC10-2 S/N 4501-UP

Fig. 1155 INSTRUMENT PANEL



Ref. 1155

Page 030080

PC10-2 S/N 4501-UP
INSTRUMENT PANEL

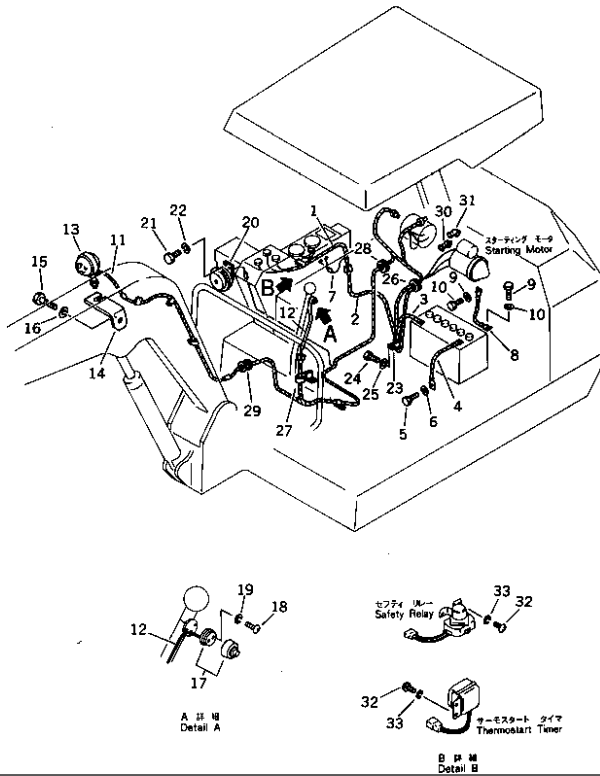
Item	Part No.	Description	Qty	Options
1	20N-06-21110	PANEL	1	SN:4501--
2	01220-40612	SCREW	6	SN:4501--
3	01602-00619	WASHER,SPRING	6	SN:4501--
3A	01640-00610	WASHER	6	SN:4501--
4	08687-21200	METER,SERVICE	1	SN:4501--
5	130-06-B1171	GAUGE,WATER TEMPERATURE	1	SN:4501--
6	201-06-21510	SWITCH,STARTING	1	SN:4501--
7	205-26-91140	SPACER	1	SN:4501--
8	08147-31200	LAMP,BATTERY CHARGE	1	SN:4501--
9	08147-21200	LAMP,OIL PRESSURE	1	SN:4501--
10	08147-21201	LAMP,THERMOSTART	1	SN:4501--
11	20N-06-11120	SWITCH,LAMP	1	SN:4501--
12	20R-06-22210	BOX,FUSE	1	SN:4501--
13	08040-02000	FUSE α 20A	4	SN:4501--
14	150-06-14290	TERMINAL	1	SN:4501--
15	01220-40520	SCREW	1	SN:4501--
16	01601-20513	WASHER,SPRING	2	SN:4501--
17	01220-40525	SCREW	1	SN:4501--
18	01580-00504	NUT	1	SN:4501--

Ref. 1155

Page 030080

PC10-2 S/N 4501-UP

Fig. 1161 ELECTRICAL SYSTEM



Ref. 1161

Page 030090

PC10-2 S/N 4501-UP
ELECTRICAL SYSTEM

Item	Part No.	Description	Qty	Options
1	20N-06-22110	WIRE ASS'Y	1	SN:4501--
2	20N-06-22120	WIRE ASS'Y	1	SN:4501--
3	20N-06-22140	WIRE ASS'Y	1	SN:4501--
4	201-06-11340	WIRE	1	SN:4501--
5	01010-31020	BOLT	1	SN:4501--
6	01602-01030	WASHER,SPRING	1	SN:4501--
7	20N-06-22130	WIRE ASS'Y	1	SN:4501--
8	201-06-21150	WIRE	1	SN:4501--
9	01010-31020	BOLT	2	SN:4501--
10	01602-01030	WASHER,SPRING	2	SN:4501--
11	20N-06-22150	WIRE ASS'Y	1	SN:4501--
12	20N-06-22170	WIRE	2	SN:4501--
13	08125-01200	LAMP ASS'Y	1	SN:4501--
14	20N-06-11222	BRACKET	1	SN:4501--
15	01010-31225	BOLT	1	SN:4501--
16	01602-01236	WASHER,SPRING	1	SN:4501--
17	20N-06-11230	SWITCH,HORN	1	SN:4501--
18	01220-40316	SCREW	2	SN:4501--
19	01601-00307	WASHER,SPRING	2	SN:4501--
20	08160-41200	HORN	1	SN:4501--
21	01010-30816	BOLT	2	SN:4501--
22	01602-00825	WASHER,SPRING	2	SN:4501--
23	08036-02514	CLIP	2	SN:4501--
24	01010-31020	BOLT	2	SN:4501--
25	01602-01030	WASHER,SPRING	2	SN:4501--
26	08037-05016	GROMMET	1	SN:4501--
27	20N-06-11190	CLIP	1	SN:4501--

Ref. 1161

Page 030090

**PC10-2 S/N 4501-UP
ELECTRICAL SYSTEM**

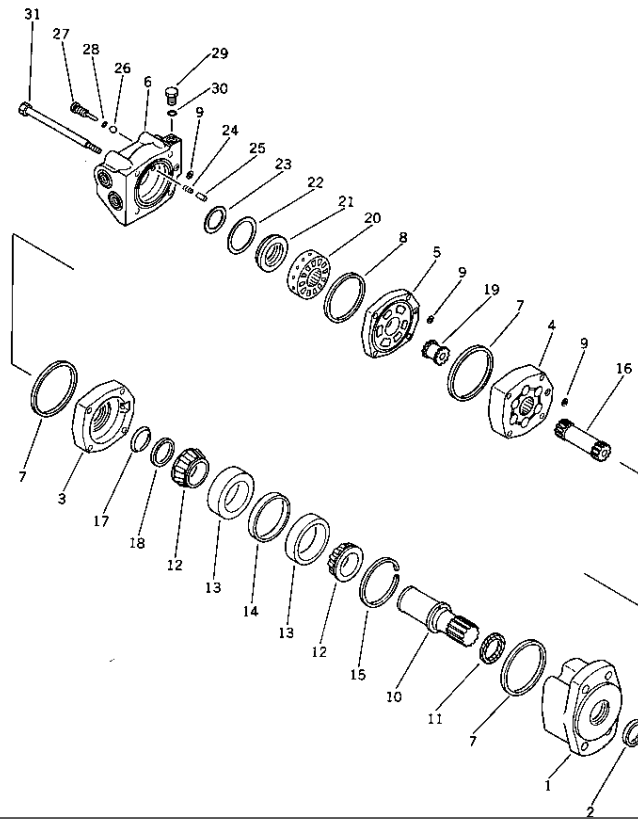
Item	Part No.	Description	Qty	Options
28	08037-01610	GROMMET	1	SN:4501--
29	08037-01008	GROMMET	1	SN:4501--
30	08038-00519	CAP,TERMINAL	1	SN:4501--
31	08038-00518	CAP,TERMINAL	1	SN:4501--
32	01010-30610	BOLT	4	SN:4501--
33	01602-00619	WASHER,SPRING	4	SN:4501--

**PC10-2 S/N 4501-UP
TRAVEL AND FINAL DRIVE**

Item	Description	Qty	Page
10	TRAVEL MOTOR	1	060010
20	COUNTER BALANCE VALVE	1	060020
30	SWIVEL JOINT	1	060030
40	HYDRAULIC PIPING (VALVE TO/FROM SWIVEL JOINT)	1	060040
50	HYDRAULIC PIPING (SWIVEL JOINT TO/FROM TRAVEL MOTOR)	1	060050
60	FINAL DRIVE AND SPROCKET	1	060060

PC10-2 S/N 4501-UP

Fig. 1201 PROPEL MOTOR



Ref. 1201

Page 060010

PC10-2 S/N 4501-UP
TRAVEL MOTOR

Item	Part No.	Description	Qty	Options
	20N-60-16201	TRAVEL MOTOR ASS'Y	2	SN:4501--
1	☆	· HOUSING	1	SN:4501--
2	20N-60-16110	· SEAL,DUST	1	SN:4501--
3	☆	· PLATE	1	SN:4501--
4	☆	· GEROLER	1	SN:4501--
5	☆	· PLATE	1	SN:4501--
6	☆	· HOUSING	1	SN:4501--
7	20N-60-16120	· RING,SEAL	3	SN:4501--
8	20N-60-16170	· RING,SEAL	1	SN:4501--
9	20N-60-16160	· RING,SEAL	3	SN:4501--
10	☆	· SHAFT	1	SN:4501--
11	20N-60-16140	· SEAL,OIL	1	SN:4501--
12	☆	· BEARING	2	SN:4501--
13	☆	· CUP	2	SN:4501--
14	☆	· SPACER	1	SN:4501--
15	☆	· SPACER	1	SN:4501--
16	☆	· DRIVE	1	SN:4501--
17	20N-60-16150	· SEAL	1	SN:4501--
18	☆	· RING	1	SN:4501--
19	☆	· DRIVE	1	SN:4501--
20	☆	· VALVE	1	SN:4501--
21	☆	· PLATE	1	SN:4501--
22	20N-60-16180	· SEAL,OUTER	1	SN:4501--
23	20N-60-16190	· SEAL,INNER	1	SN:4501--
24	☆	· SPRING	2	SN:4501--
25	☆	· PIN	2	SN:4501--
26	☆	· BALL	2	SN:4501--

Ref. 1201

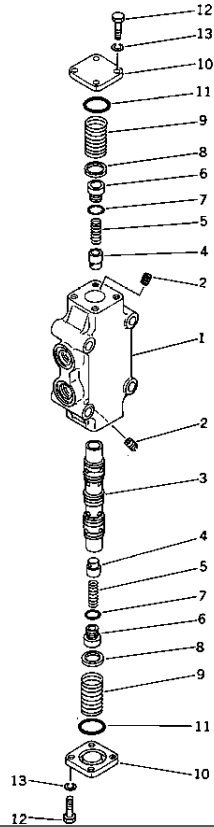
Page 060010

**PC10-2 S/N 4501-UP
TRAVEL MOTOR**

Item	Part No.	Description	Qty	Options
27	☆	· PLUG	2	SN:4501--
28	20N-60-16220	· O-RING	2	SN:4501--
29	☆	· PLUG	1	SN:4501--
30	20N-60-16210	· O-RING	1	SN:4501--
31	☆	· BOLT	4	SN:4501--

PC10-2 S/N 4501-UP

Fig. 1205 COUNTER BALANCE VALVE



Ref. 1205

Page 060020

PC10-2 S/N 4501-UP COUNTER BALANCE VALVE

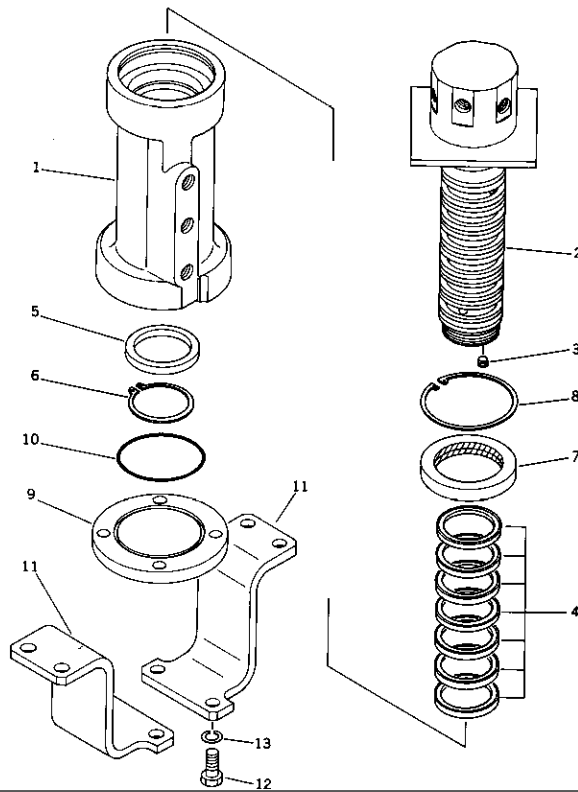
Item	Part No.	Description	Qty	Options
	706-73-71502	VALVE ASS'Y	2	SN:4501--
1	☆	· BODY,VALVE	1	SN:4501--
2	☆	· SCREW	2	SN:4501--
3	☆	· SPOOL	1	SN:4501--
4	706-73-70140	· VALVE,CHECK	2	SN:4501--
5	706-73-70150	· SPRING	2	SN:4501--
6	706-73-71260	· PLUG	2	SN:4501--
7	07002-11623	· O-RING	2	SN:4501--
8	706-73-71150	· RING	2	SN:4501--
9	706-73-71182	· SPRING	2	SN:4501--
10	706-73-71121	· PLATE	2	SN:4501--
11	07000-13032	· O-RING	2	SN:4501--
12	01010-30825	· BOLT	8	SN:4501--
13	01602-00825	· WASHER,SPRING	8	SN:4501--

Ref. 1205

Page 060020

PC10-2 S/N 4501-UP

Fig. 1211 SWIVEL JOINT



Ref. 1211

Page 060030

PC10-2 S/N 4501-UP
SWIVEL JOINT

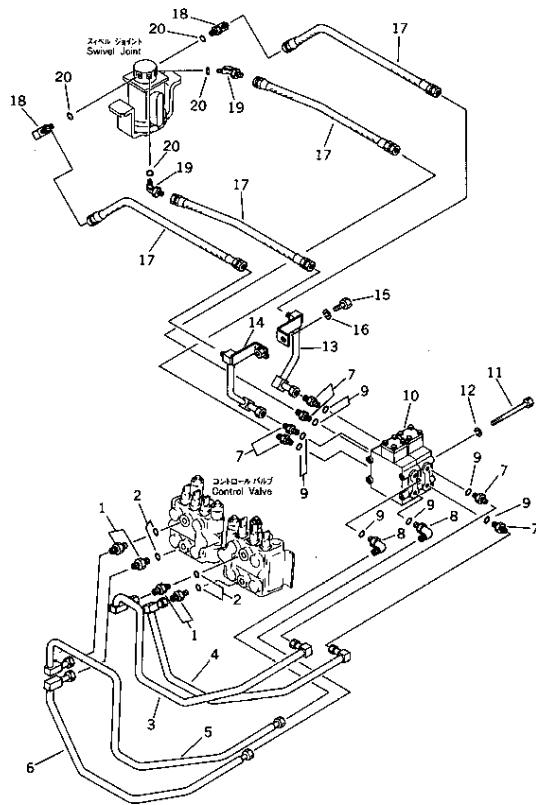
Item	Part No.	Description	Qty	Options
	703-05-12100	SWIVEL JOINT ASS'Y	1	SN:4501--
1	703-05-91110	· ROTOR	1	SN:4501--
2	703-05-92110	· SHAFT	1	SN:4501--
3	07043-20108	· PLUG	1	SN:4501--
4	703-05-95110	· SEAL	6	SN:4501--
5	703-05-94110	· RING	7	SN:4501--
6	04064-05020	· RING,SNAP	1	SN:4501--
7	703-05-96110	· SEAL	1	SN:4501--
8	04065-08225	· RING,SNAP	1	SN:4501--
9	703-05-93110	· COVER	1	SN:4501--
10	07000-22075	· O-RING	1	SN:4501--
11	703-05-98110	· PLATE	2	SN:4501--
12	01010-31035	· BOLT	4	SN:4501--
13	01602-01030	· WASHER,SPRING	4	SN:4501--

Ref. 1211

Page 060030

PC10-2 S/N 4501-UP

Fig. 1221 HYDRAULIC PIPING (Valve To/ From Swivel Joint)



Ref. 1221

Page 060040

PC10-2 S/N 4501-UP
HYDRAULIC PIPING (VALVE TO/FROM SWIVEL JOINT)

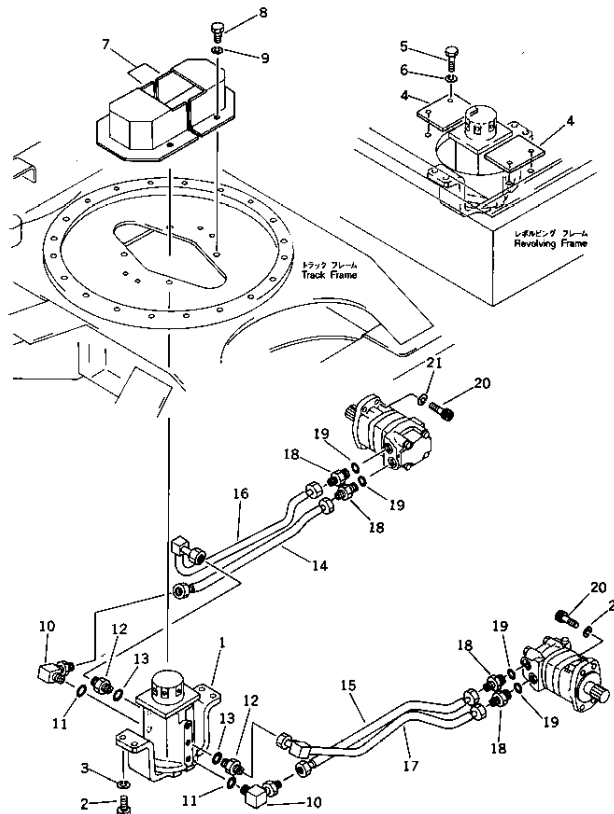
Item	Part No.	Description	Qty	Options
1	07230-10315	UNION	4	SN:4501--
2	07002-12034	O-RING	4	SN:4501--
3	20N-62-21810	TUBE	1	SN:4501--
4	20N-62-21820	TUBE	1	SN:4501--
5	20N-62-21830	TUBE	1	SN:4501--
6	20N-62-21840	TUBE	1	SN:4501--
7	07230-10315	UNION	6	SN:4501--
8	07235-10315	ELBOW	2	SN:4501--
9	07002-12034	O-RING	8	SN:4501--
10	(706-73-71502)	VALVE ASS'Y	2	SN:4501--
11	01011-51030	BOLT	3	SN:4501--
12	01602-01030	WASHER,SPRING	3	SN:4501--
13	20N-62-21850	TUBE	1	SN:4501--
14	20N-62-21860	TUBE	1	SN:4501--
15	01010-31025	BOLT	1	SN:4501--
16	01602-01030	WASHER,SPRING	1	SN:4501--
17	07123-00303	HOSE	4	SN:4501--
18	20D-62-12180	ELBOW	2	SN:4501--
19	20N-62-21880	ELBOW	2	SN:4501--
20	07002-11423	O-RING	4	SN:4501--

Ref. 1221

Page 060040

PC10-2 S/N 4501-UP

Fig. 1222 HYDRAULIC PIPING (Swivel Joint To / From Propel Motor)



Ref. 1222

Page 060050

PC10-2 S/N 4501-UP
HYDRAULIC PIPING (SWIVEL JOINT TO/FROM TRAVEL MOTOR)

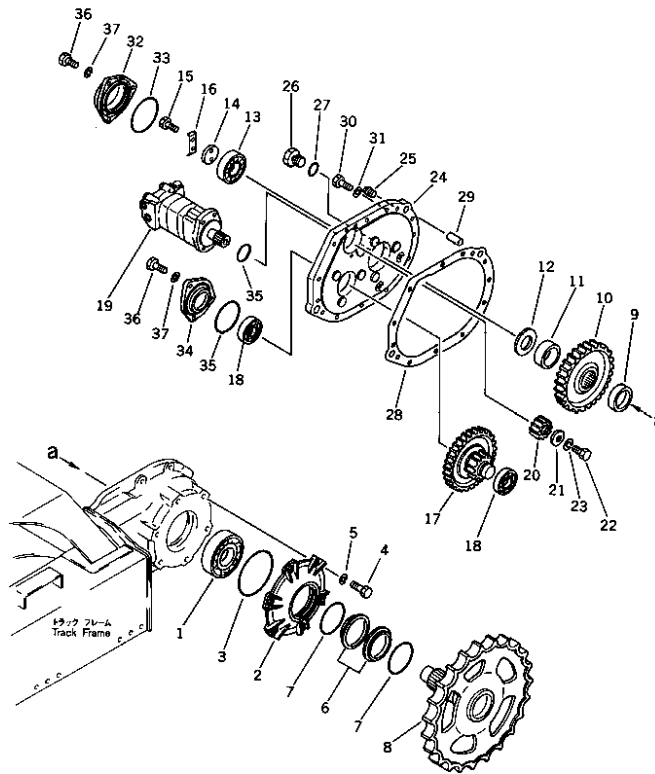
Item	Part No.	Description	Qty	Options
1	(703-05-12100)	SWIVEL JOINT ASS'Y	1	SN:4501--
2	01010-31025	BOLT	4	SN:4501--
3	01602-01030	WASHER,SPRING	4	SN:4501--
4	20N-60-17121	PLATE	2	SN:4501--
5	01010-31035	BOLT	4	SN:4501--
6	01602-01030	WASHER,SPRING	4	SN:4501--
7	20N-60-17132	COVER	2	SN:4501--
8	01010-31020	BOLT	4	SN:4501--
9	01602-01030	WASHER,SPRING	4	SN:4501--
10	20D-62-12180	ELBOW	2	SN:4501--
11	07002-11423	O-RING	2	SN:4501--
12	144-865-6720	NIPPLE	2	SN:4501--
13	07002-11423	O-RING	2	SN:4501--
14	20N-62-13511	TUBE	1	SN:4501--
15	20N-62-13521	TUBE	1	SN:4501--
16	20N-62-13531	TUBE	1	SN:4501--
17	20N-62-13541	TUBE	1	SN:4501--
18	20N-62-12160	NIPPLE	4	SN:4501--
19	07000-12018	O-RING	4	SN:4501--
20	01252-41240	BOLT	8	SN:4501--
21	01602-01236	WASHER,SPRING	8	SN:4501--

Ref. 1222

Page 060050

PC10-2 S/N 4501-UP

Fig. 1241 FINAL DRIVE AND SPROCKET



Ref. 1241

Page 060060

PC10-2 S/N 4501-UP
FINAL DRIVE AND SPROCKET

Item	Part No.	Description	Qty	Options
1	06040-06312	BEARING,BALL	2	SN:4501--
2	20R-27-11460	COVER	2	SN:4501--
3	07000-02145	O-RING	2	SN:4501--
4	01010-31230	BOLT	12	SN:4501--
5	01602-01236	WASHER,SPRING	12	SN:4501--
	170-30-00111	FLOATING SEAL ASS'Y	2	SN:4501--
6	170-30-00180	· SEAL RING ASS'Y	1	SN:4501--
	☆	· · RING,SEAL	2	SN:4501--
7	175-30-00580	· O-RING ASS'Y	1	SN:4501--
	☆	· · O-RING	2	SN:4501--
8	20N-27-14120	SPROCKET	2	SN:4501--
9	20N-27-14230	COLLAR	2	SN:4501--
10	20N-27-14210	GEAR	2	SN:4501--
11	20N-27-14240	COLLAR	2	SN:4501--
12	10E-27-12150	COLLAR	2	SN:4501--
13	06044-00308	BEARING,ROLLER	2	SN:4501--
14	04080-04008	HOLDER	2	SN:4501--
15	01010-31020	BOLT	4	SN:4501--
16	04081-04012	LOCK	2	SN:4501--
17	20N-27-13110	SHAFT	2	SN:4501--
18	06044-00207	BEARING,ROLLER	4	SN:4501--
19	(20N-60-16201)	TRAVEL MOTOR ASS'Y	2	SN:4501--
20	20N-27-12110	GEAR	2	SN:4501--
21	20N-27-12130	HOLDER	2	SN:4501--
22	01010-31025	BOLT	2	SN:4501--
23	01602-01030	WASHER,SPRING	2	SN:4501--
	20N-27-00010	COVER ASS'Y,L.H.	1	SN:4501--

Ref. 1241

Page 060060

**PC10-2 S/N 4501-UP
FINAL DRIVE AND SPROCKET**

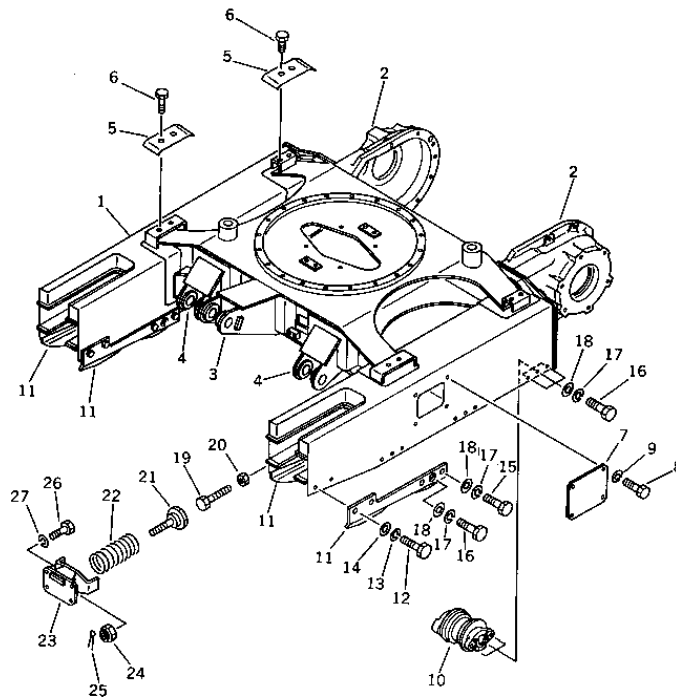
Item	Part No.	Description	Qty	Options
	20N-27-00020	COVER ASS'Y,R.H.	1	SN:4501--
24	☆	· COVER,L.H.	1	SN:4501--
	☆	· COVER,R.H.	1	SN:4501--
25	07049-01215	· PLUG	2	SN:4501--
26	07040-12414	PLUG	4	SN:4501--
27	07002-02434	O-RING	4	SN:4501--
28	20N-27-11140	GASKET	2	SN:4501--
29	04020-01638	PIN,DOWEL	4	SN:4501--
30	01010-31240	BOLT	22	SN:4501--
31	01602-01236	WASHER,SPRING	22	SN:4501--
32	20R-27-11451	COVER	2	SN:4501--
33	07000-02105	O-RING	2	SN:4501--
34	20R-27-11342	COVER	2	SN:4501--
35	07000-02085	O-RING	4	SN:4501--
36	01010-31230	BOLT	12	SN:4501--
37	01602-01236	WASHER,SPRING	12	SN:4501--

**PC10-2 S/N 4501-UP
UNDER CARRIAGE**

Item	Description	Qty	Page
10	TRACK FRAME AND RECOIL SPRING	1	090010
20	IDLER	1	090020
30	TRACK ROLLER	1	090030
40	TRACK SHOE	1	090040

PC10-2 S/N 4501-UP

Fig. 1301 TRACK FRAME AND RECOIL SPRING



Ref. 1301

Page 090010

PC10-2 S/N 4501-UP
TRACK FRAME AND RECOIL SPRING

Item	Part No.	Description	Qty	Options
1	20N-30-21110	FRAME,TRACK	1	SN:4501--
2	☆	· CASE,L.H. (WELDED)	1	SN:4501--
	☆	· CASE,R.H. (WELDED)	1	SN:4501--
3	☆	· BRACKET,CENTER (WELDED)	1	SN:4501--
4	☆	· BRACKET,L.H. (WELDED)	1	SN:4501--
	☆	· BRACKET,R.H. (WELDED)	1	SN:4501--
5	20R-30-11190	PLATE	4	SN:4501--
6	01010-31225	BOLT	8	SN:4501--
7	20R-30-17110	COVER	2	SN:4501--
8	01010-31016	BOLT	8	SN:4501--
9	01602-01030	WASHER,SPRING	8	SN:4501--
10	(10E-30-00051)	TRACK ROLLER ASS'Y	6	SN:4501--
11	20R-30-11321	GUARD,OUTER▫ L.H. AND INNER▫ R.H.	2	SN:4501--
	20R-30-11331	GUARD,INNER▫ L.H. AND OUTER▫ R.H.	2	SN:4501--
12	01010-31435	BOLT	8	SN:4501--
13	01602-01442	WASHER,SPRING	8	SN:4501--
14	01643-31445	WASHER	8	SN:4501--
15	01010-31445	BOLT	8	SN:4501--
16	01010-31435	BOLT	28	SN:4501--
17	01602-01442	WASHER,SPRING	36	SN:4501--
18	01643-31445	WASHER	36	SN:4501--
19	10E-30-13141	BOLT	2	SN:4501--
20	10E-30-13150	NUT	2	SN:4501--
21	10E-30-13120	ROD	2	SN:4501--
22	10E-30-13160	SPRING,RECOIL	2	SN:4501--
23	10E-30-13130	BRACKET	2	SN:4501--
24	01590-02226	NUT	2	SN:4501--

Ref. 1301

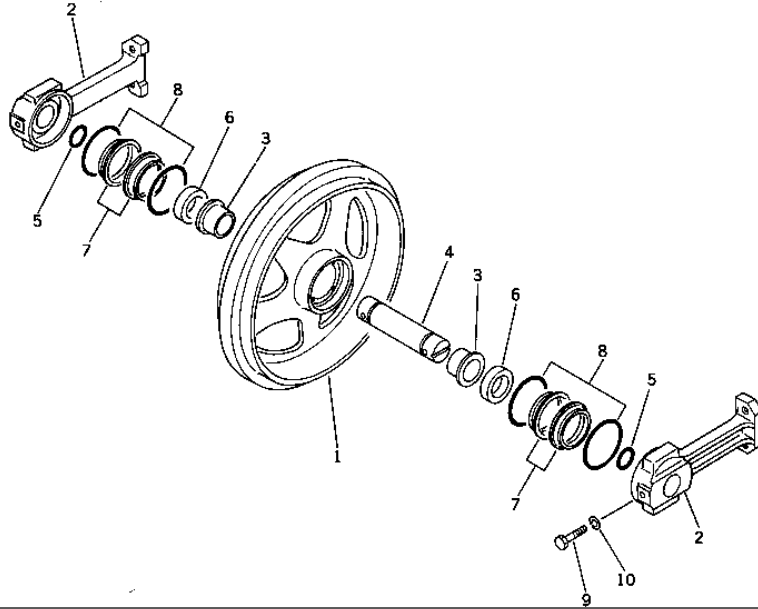
Page 090010

PC10-2 S/N 4501-UP
TRACK FRAME AND RECOIL SPRING

Item	Part No.	Description	Qty	Options
25	04050-05040	PIN,COTTER	2	SN:4501--
26	01010-31230	BOLT	8	SN:4501--
27	01602-01236	WASHER,SPRING	8	SN:4501--

PC10-2 S/N 4501-UP

Fig. 1313 IDLER



Ref. 1313

Page 090020

PC10-2 S/N 4501-UP
IDLER

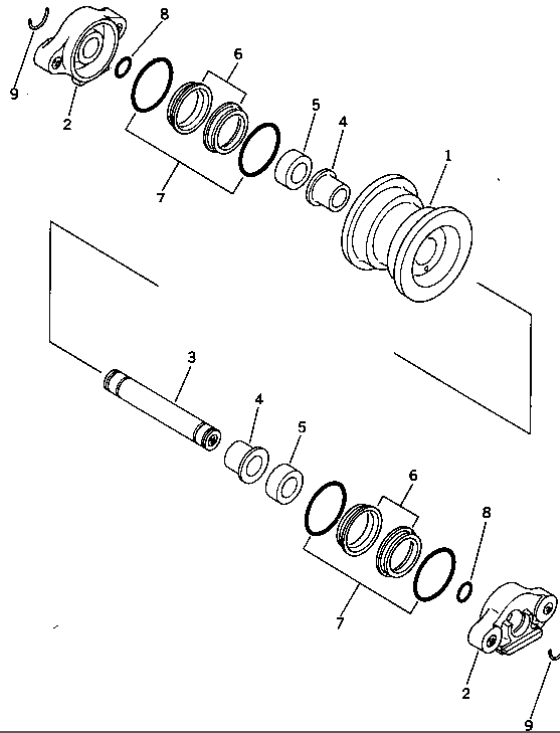
Item	Part No.	Description	Qty	Options
	20R-30-00010	FRONT IDLER ASS'Y	2	SN:4501--
1	20R-30-11360	· IDLER	1	SN:4501--
2	20R-30-11230	· SUPPORT, IDLER	2	SN:4501--
3	10E-30-12150	· BUSHING	2	SN:4501--
4	20R-30-11240	· SHAFT, IDLER	1	SN:4501--
5	07000-03028	· O-RING	2	SN:4501--
6	10E-30-12140	· COLLAR	2	SN:4501--
7	140-30-00040	· FLOATING SEAL ASS'Y	2	SN:4501--
	140-30-00400	· · SEAL RING ASS'Y	1	SN:4501--
	☆	· · · RING, SEAL	2	SN:4501--
8	140-30-00410	· · O-RING ASS'Y	1	SN:4501--
	☆	· · · O-RING	2	SN:4501--
9	01090-31045	· BOLT	2	SN:4501--
10	01602-01030	· WASHER, SPRING	2	SN:4501--

Ref. 1313

Page 090020

PC10-2 S/N 4501-UP

Fig. 1315 TRACK ROLLER



Ref. 1315

Page 090030

PC10-2 S/N 4501-UP
TRACK ROLLER

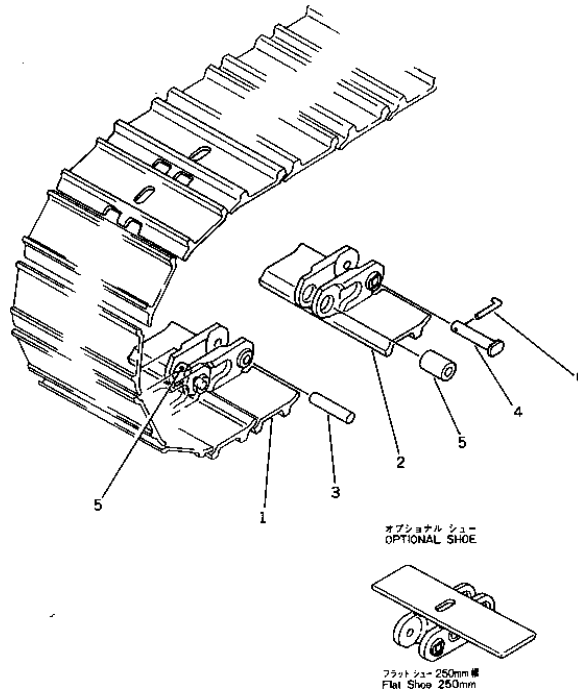
Item	Part No.	Description	Qty	Options
	10E-30-00051	TRACK ROLLER ASS'Y	6	SN:4501--
1	10E-30-14110	· ROLLER,TRACK	1	SN:4501--
2	20R-30-11280	· COLLAR	2	SN:4501--
3	10E-30-14130	· SHAFT,ROLLER	1	SN:4501--
4	10E-30-14140	· BUSHING	2	SN:4501--
5	10E-30-14150	· COLLAR	2	SN:4501--
	110-30-00045	· FLOATING SEAL ASS'Y	2	SN:4501--
6	101-30-00130	· · SEAL RING ASS'Y	1	SN:4501--
	☆	· · · RING,SEAL	2	SN:4501--
7	101-30-00140	· · O-RING ASS'Y	1	SN:4501--
	☆	· · · O-RING	2	SN:4501--
8	07000-02021	· O-RING	2	SN:4501--
9	20R-30-11270	· RING,SNAP	2	SN:4501--

Ref. 1315

Page 090030

PC10-2 S/N 4501-UP

Fig. 1321 TRACK SHOE



Ref. 1321

Page 090040

PC10-2 S/N 4501-UP
TRACK SHOE

Item	Part No.	Description	Qty	Options
DOUBLE 250MM				
	20N-32-00100	TRACK SHOE ASS'Y	1	SN:4501--
1	20N-32-11110	· SHOE,REGULAR	74	SN:4501--
2	20N-32-11130	· SHOE,MASTER	2	SN:4501--
3	20S-32-11180	· PIN REGULAR,REGULAR	74	SN:4501--
4	20S-32-11190	· PIN MASTER,MASTER	2	SN:4501--
5	20S-32-11210	· BUSHING	76	SN:4501--
6	20S-32-11220	· PIN,LOCK	2	SN:4501--
FLAT 250MM				
	20N-32-13010	TRACK SHOE ASS'Y	1	SN:4501--
1	20R-32-11220	· SHOE,REGULAR	74	SN:4501--
2	20R-32-11230	· SHOE,MASTER	2	SN:4501--
3	20S-32-11180	· PIN REGULAR,REGULAR	74	SN:4501--
4	20S-32-11190	· PIN MASTER,MASTER	2	SN:4501--
5	20S-32-11210	· BUSHING	76	SN:4501--
6	20S-32-11220	· PIN,LOCK	2	SN:4501--

Ref. 1321

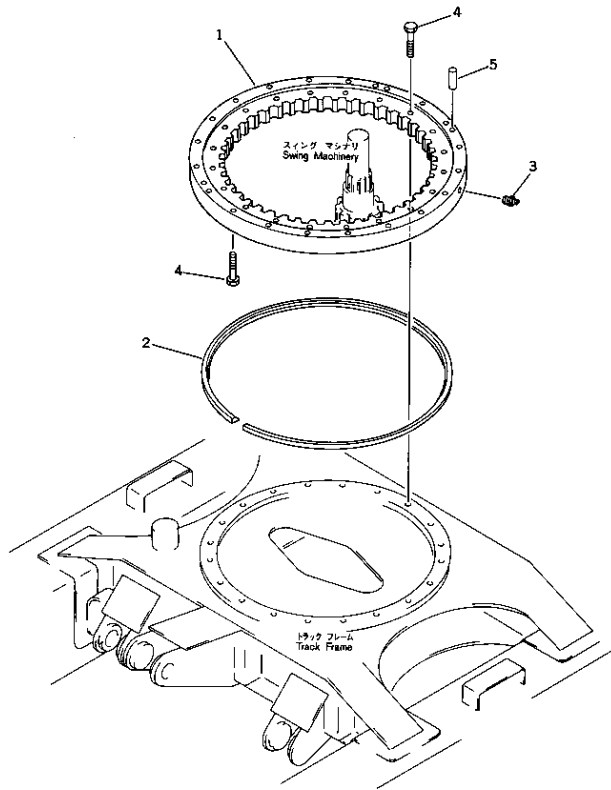
Page 090040

**PC10-2 S/N 4501-UP
SWING SYSTEM**

Item	Description	Qty	Page
10	SWING CIRCLE	1	120010
20	SWING MACHINERY	1	120020
30	SWING MOTOR	1	120030
40	SWING MOTOR BRAKE VALVE	1	120040
50	HYDRAULIC PIPING (VALVE TO/FROM SWING MOTOR)	1	120050

PC10-2 S/N 4501-UP

Fig. 1401 SWING CIRCLE



Ref. 1401

Page 120010

PC10-2 S/N 4501-UP
SWING CIRCLE

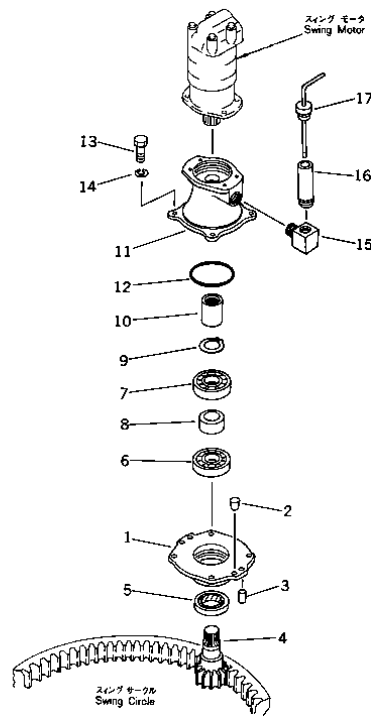
Item	Part No.	Description	Qty	Options
1	20S-25-11101	CIRCLE,SWING	1	SN:4501--
2	20S-25-11150	・ SEAL	1	SN:4501--
3	07020-00000	・ FITTING,GREASE	3	SN:4501--
4	01010-31265	BOLT	34	SN:4501--
5	04020-01434	PIN,DOWEL	2	SN:4501--

Ref. 1401

Page 120010

PC10-2 S/N 4501-UP

Fig. 1411 SWING MACHINERY



Ref. 1411

Page 120020

PC10-2 S/N 4501-UP SWING MACHINERY

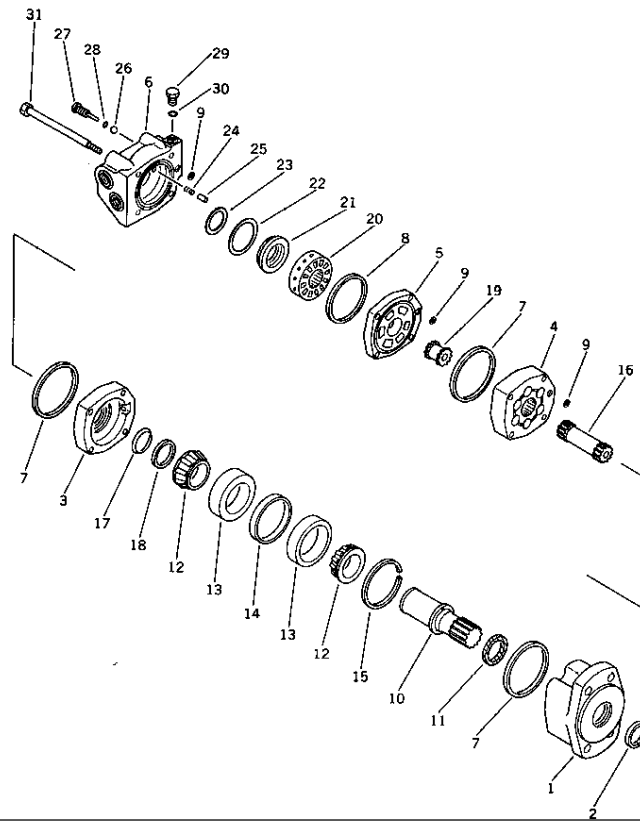
Item	Part No.	Description	Qty	Options
	20N-26-00010	CAGE ASS'Y	1	SN:4501--
1	☆	· CAGE	1	SN:4501--
2	07049-01012	· PLUG	2	SN:4501--
3	04020-01024	PIN,DOWEL	2	SN:4501--
4	20N-26-11211	SHAFT	1	SN:4501--
5	07012-00048	SEAL,OIL	1	SN:4501--
6	201-09-25120	BEARING,ROLLER	1	SN:4501--
7	06044-00307	BEARING,ROLLER	1	SN:4501--
8	20N-26-11230	COLLAR	1	SN:4501--
9	04064-03515	RING,SNAP	1	SN:4501--
10	20N-26-11220	COUPLING	1	SN:4501--
11	20N-26-11111	CAGE	1	SN:4501--
12	07000-02090	O-RING	1	SN:4501--
13	01010-31040	BOLT	4	SN:4501--
14	01602-01030	WASHER,SPRING	4	SN:4501--
15	562-35-14110	ELBOW	1	SN:4501--
16	20N-26-11412	FILLER	1	SN:4501--
17	20N-26-11430	GAUGE	1	SN:4501--

Ref. 1411

Page 120020

PC10-2 S/N 4501-UP

Fig. 1421 SWING MOTOR



Ref. 1421

Page 120030

PC10-2 S/N 4501-UP
SWING MOTOR

Item	Part No.	Description	Qty	Options
	20N-60-16100	SWING MOTOR ASS'Y	1	SN:4501--
1	☆	· HOUSING	1	SN:4501--
2	20N-60-16110	· SEAL,DUST	1	SN:4501--
3	☆	· PLATE	1	SN:4501--
4	☆	· GEROLER	1	SN:4501--
5	☆	· PLATE	1	SN:4501--
6	☆	· HOUSING	1	SN:4501--
7	20N-60-16120	· RING,SEAL	3	SN:4501--
8	20N-60-16170	· RING,SEAL	1	SN:4501--
9	20N-60-16160	· RING,SEAL	3	SN:4501--
10	☆	· SHAFT	1	SN:4501--
11	20N-60-16140	· SEAL,OIL	1	SN:4501--
12	☆	· BEARING	2	SN:4501--
13	☆	· CUP	2	SN:4501--
14	☆	· SPACER	1	SN:4501--
15	☆	· SPACER	1	SN:4501--
16	☆	· DRIVE	1	SN:4501--
17	20N-60-16150	· SEAL	1	SN:4501--
18	☆	· RING	1	SN:4501--
19	☆	· DRIVE	1	SN:4501--
20	☆	· VALVE	1	SN:4501--
21	☆	· PLATE	1	SN:4501--
22	20N-60-16180	· SEAL,OUTER	1	SN:4501--
23	20N-60-16190	· SEAL,INNER	1	SN:4501--
24	☆	· SPRING	2	SN:4501--
25	☆	· PIN	2	SN:4501--
26	☆	· BALL	2	SN:4501--

Ref. 1421

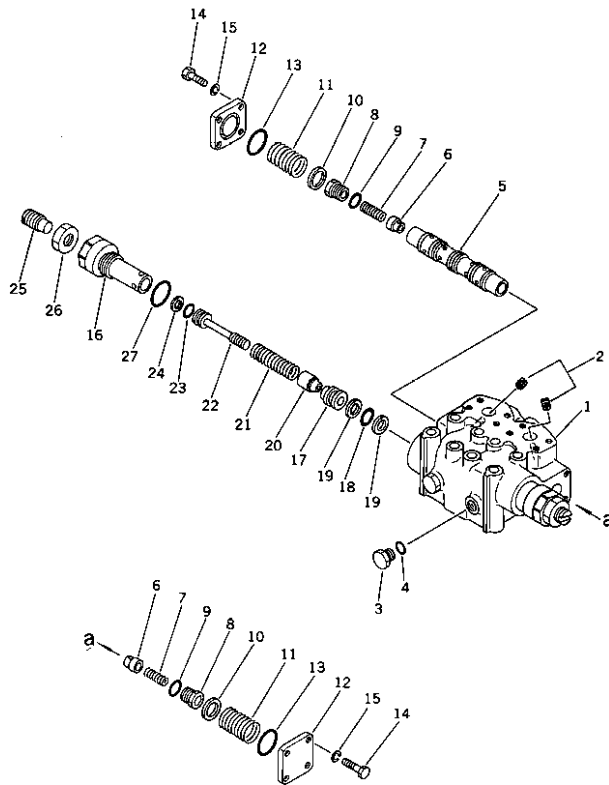
Page 120030

**PC10-2 S/N 4501-UP
SWING MOTOR**

Item	Part No.	Description	Qty	Options
27	☆	· PLUG	2	SN:4501--
28	20N-60-16220	· O-RING	2	SN:4501--
29	☆	· PLUG	1	SN:4501--
30	20N-60-16210	· O-RING	1	SN:4501--
31	☆	· BOLT	4	SN:4501--

PC10-2 S/N 4501-UP

Fig. 1425 SWING MOTOR BRAKE VALVE



Ref. 1425

Page 120040

PC10-2 S/N 4501-UP SWING MOTOR BRAKE VALVE

Item	Part No.	Description	Qty	Options
	706-73-72300	BRAKE VALVE ASS'Y	1	SN:4501--
1	☆	· BODY, VALVE	1	SN:4501--
2	☆	· SCREW	2	SN:4501--
3	07040-11409	· PLUG	2	SN:4501--
4	07002-11423	· O-RING	2	SN:4501--
5	☆	· SPOOL	1	SN:4501--
6	706-73-70140	· VALVE, CHECK	2	SN:4501--
7	706-73-70150	· SPRING	2	SN:4501--
8	706-73-70161	· PLUG	2	SN:4501--
9	07002-11623	· O-RING	2	SN:4501--
10	706-73-71150	· RING	2	SN:4501--
11	706-73-71140	· SPRING	2	SN:4501--
12	706-73-71121	· PLATE	2	SN:4501--
13	07000-13032	· O-RING	2	SN:4501--
14	01010-30825	· BOLT	8	SN:4501--
15	01602-00825	· WASHER, SPRING	8	SN:4501--
	706-73-75500	· VALVE ASS'Y, SAFETY	2	SN:4501--
16	☆	· SLEEVE	1	SN:4501--
17	☆	· SEAT, VALVE	1	SN:4501--
18	07000-22016	· O-RING	1	SN:4501--
19	07001-02016	· RING, BACK-UP	2	SN:4501--
20	☆	· VALVE	1	SN:4501--
21	☆	· SPRING	1	SN:4501--
22	☆	· PISTON	1	SN:4501--
23	☆	· O-RING	1	SN:4501--
24	☆	· RING, BACK-UP	1	SN:4501--
25	☆	· SCREW	1	SN:4501--

Ref. 1425

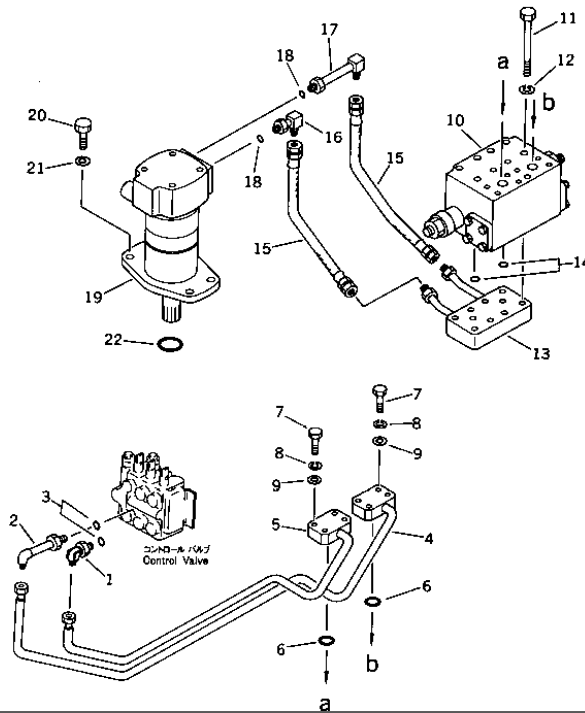
Page 120040

**PC10-2 S/N 4501-UP
SWING MOTOR BRAKE VALVE**

Item	Part No.	Description	Qty	Options
26	☆	· · NUT	1	SN:4501--
27	07002-13034	· · O-RING	1	SN:4501--

PC10-2 S/N 4501-UP

Fig. 1431 HYDRAULIC PIPING (Valve To / From Swing Motor)



Ref. 1431

Page 120050

PC10-2 S/N 4501-UP HYDRAULIC PIPING (VALVE TO/FROM SWING MOTOR)

Item	Part No.	Description	Qty	Options
1	07235-10315	ELBOW	1	SN:4501--
2	20R-62-11311	ELBOW	1	SN:4501--
3	07002-12034	O-RING	2	SN:4501--
4	20N-62-21660	TUBE	1	SN:4501--
5	20N-62-21670	TUBE	1	SN:4501--
6	07000-13025	O-RING	2	SN:4501--
7	01010-30845	BOLT	8	SN:4501--
8	01602-00825	WASHER, SPRING	8	SN:4501--
9	01643-00823	WASHER	8	SN:4501--
10	(706-73-72300)	BRAKE VALVE ASS'Y	1	SN:4501--
11	01011-51025	BOLT	8	SN:4501--
12	01602-01030	WASHER, SPRING	8	SN:4501--
13	20N-62-21630	TUBE	1	SN:4501--
14	07000-13025	O-RING	2	SN:4501--
15	07123-00303	HOSE	2	SN:4501--
16	20N-62-21641	ELBOW	1	SN:4501--
17	20N-62-21651	ELBOW	1	SN:4501--
18	07000-12018	O-RING	2	SN:4501--
19	(20N-60-16100)	SWING MOTOR ASS'Y	1	SN:4501--
20	01252-41240	BOLT	4	SN:4501--
21	01602-01236	WASHER, SPRING	4	SN:4501--
22	07000-02085	O-RING	1	SN:4501--

Ref. 1431

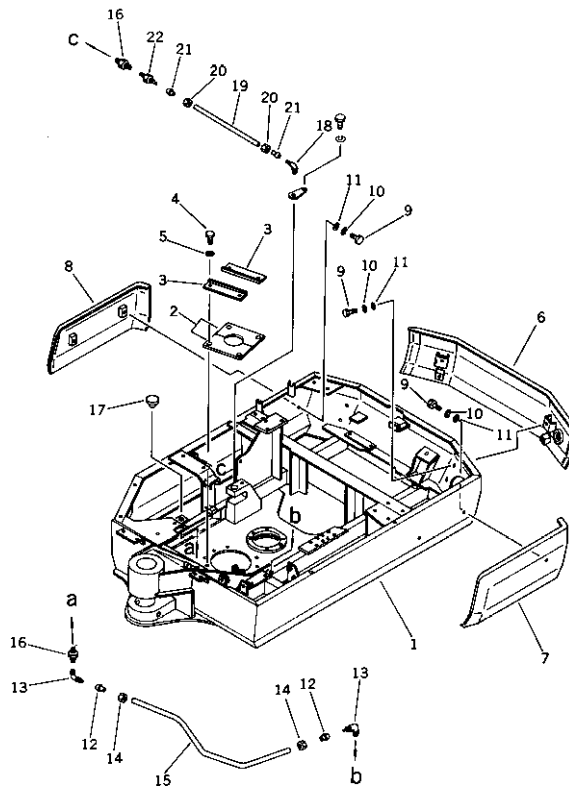
Page 120050

**PC10-2 S/N 4501-UP
REVOLVING FRAME AND CAB**

Item	Description	Qty	Page
10	REVOLVING FRAME	1	150010
20	MACHINE CAB (1/2)	1	150020
30	MACHINE CAB (2/2)	1	150030
40	CANOPY	1	150040
50	OPERATOR'S SEAT	1	150050
60	MARK AND PLATE	1	150060

PC10-2 S/N 4501-UP

Fig. 1501 REVOLVING FRAME



Ref. 1501

Page 150010

PC10-2 S/N 4501-UP
REVOLVING FRAME

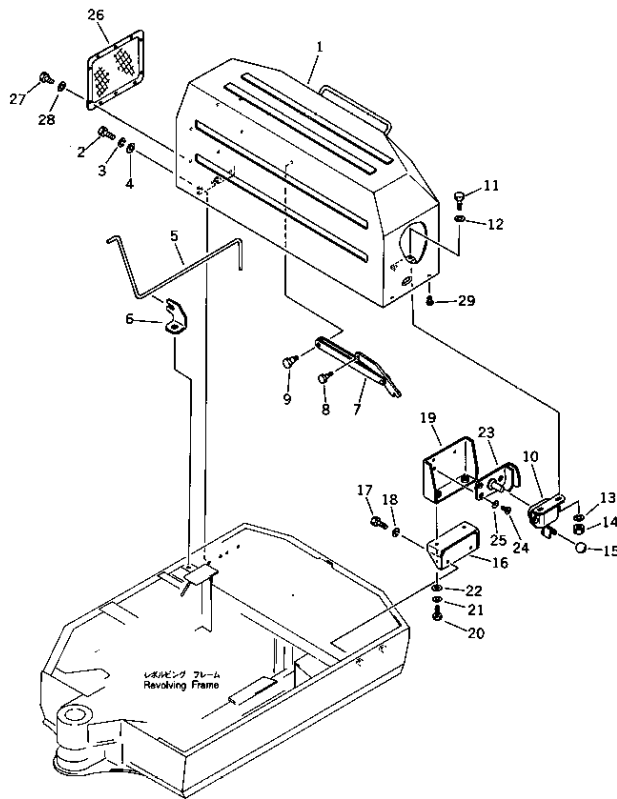
Item	Part No.	Description	Qty	Options
1	20N-46-21110	FRAME,REVOLVING	1	SN:4501--
2	20N-46-21150	COVER	2	SN:4501--
3	20N-46-21160	PLATE	2	SN:4501--
4	01010-31020	BOLT	4	SN:4501--
5	01602-01030	WASHER,SPRING	4	SN:4501--
6	20N-46-22110	BUMPER,REAR	1	SN:4501--
7	20N-46-22120	BUMPER,L.H.	1	SN:4501--
8	20N-46-22130	BUMPER,R.H.	1	SN:4501--
9	01010-31025	BOLT	8	SN:4501--
10	01602-01030	WASHER,SPRING	8	SN:4501--
11	01643-01032	WASHER	8	SN:4501--
12	07831-00411	SLEEVE	2	SN:4501--
13	20R-46-11150	ELBOW	1	SN:4501--
14	07832-00410	NUT	2	SN:4501--
15	20N-46-21170	TUBE	1	SN:4501--
16	07020-00000	FITTING,GREASE	2	SN:4501--
17	20X-46-11170	CAP	1	SN:4501--
18	20R-46-11150	ELBOW	1	SN:4501--
19	20N-70-21150	TUBE	1	SN:4501--
20	07832-00410	NUT	2	SN:4501--
21	07831-00411	SLEEVE	2	SN:4501--
22	20R-46-11160	CONNECTOR	1	SN:4501--

Ref. 1501

Page 150010

PC10-2 S/N 4501-UP

Fig. 1511 MACHINE CAB (1/2)



Ref. 1511

Page 150020

PC10-2 S/N 4501-UP
MACHINE CAB (1/2)

Item	Part No.	Description	Qty	Options
1	20N-54-21110	COVER,MACHINE	1	SN:4501--
2	01010-31230	BOLT	4	SN:4501--
3	01602-01236	WASHER,SPRING	4	SN:4501--
4	01643-01232	WASHER	4	SN:4501--
5	20N-54-21130	BAR,TORSION	1	SN:4501--
6	20N-54-21320	PLATE	1	SN:4501--
7	20R-54-21430	STAY	1	SN:4501--
8	20R-54-21450	BOLT	1	SN:4501--
9	20R-54-21440	BOLT	1	SN:4501--
10	20N-54-21170	LOCK ASS'Y	1	SN:4501--
11	01010-30820	BOLT	2	SN:4501--
12	01643-00823	WASHER	2	SN:4501--
13	01602-00825	WASHER,SPRING	2	SN:4501--
14	01580-00806	NUT	2	SN:4501--
15	20N-54-21180	KNOB	1	SN:4501--
16	20N-54-21360	BRACKET	1	SN:4501--
17	01010-31020	BOLT	2	SN:4501--
18	01602-01030	WASHER,SPRING	2	SN:4501--
19	20N-54-21350	BRACKET	1	SN:4501--
20	01010-31025	BOLT	2	SN:4501--
21	01602-01030	WASHER,SPRING	2	SN:4501--
22	01643-01032	WASHER	2	SN:4501--
23	566-54-24511	STRIKER	1	SN:4501--
24	01224-40820	SCREW	3	SN:4501--
25	205-54-53730	WASHER,LOCK	3	SN:4501--
26	20N-54-21190	COVER	1	SN:4501--
27	01220-40616	SCREW	6	SN:4501--

Ref. 1511

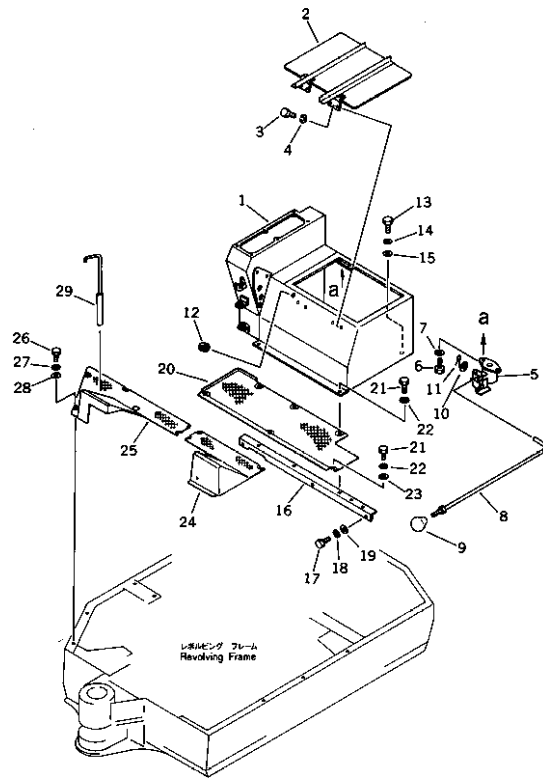
Page 150020

**PC10-2 S/N 4501-UP
MACHINE CAB (1/2)**

Item	Part No.	Description	Qty	Options
28	01640-20610	WASHER	6	SN:4501--
29	203-54-32260	STOPPER	2	SN:4501--

PC10-2 S/N 4501-UP

Fig. 1512 MACHINE CAB (2/2)



Ref. 1512

Page 150030

PC10-2 S/N 4501-UP
MACHINE CAB (2/2)

Item	Part No.	Description	Qty	Options
1	20N-54-23120	BOX	1	SN:4501--
2	20N-54-23210	PLATE	1	SN:4501--
3	01010-31225	BOLT	4	SN:4501--
4	01602-21236	WASHER,SPRING	4	SN:4501--
5	20N-54-21380	SEAT LIFTER ASS'Y	1	SN:4501--
6	01010-31016	BOLT	2	SN:4501--
7	01602-01030	WASHER,SPRING	2	SN:4501--
8	20N-54-23220	ROD	1	SN:4501--
9	09304-00835	KNOB	1	SN:4501--
10	01641-20608	WASHER	2	SN:4501--
11	04050-02012	PIN,COTTER	2	SN:4501--
12	08037-01008	GROMMET	1	SN:4501--
13	01010-31025	BOLT	2	SN:4501--
14	01602-01030	WASHER,SPRING	2	SN:4501--
15	01643-01032	WASHER	2	SN:4501--
16	20N-54-23110	BRACKET	1	SN:4501--
17	01010-31025	BOLT	3	SN:4501--
18	01602-01030	WASHER,SPRING	3	SN:4501--
19	01643-01032	WASHER	3	SN:4501--
20	20N-54-23250	PLATE,FLOOR	1	SN:4501--
21	01010-31025	BOLT	6	SN:4501--
22	01602-01030	WASHER,SPRING	6	SN:4501--
23	01643-01032	WASHER	2	SN:4501--
24	20N-54-23230	PLATE,FLOOR α L.H.	1	SN:4501--
25	20N-54-23240	PLATE,FLOOR α R.H.	1	SN:4501--
26	01010-31025	BOLT	4	SN:4501--
27	01602-01030	WASHER,SPRING	4	SN:4501--

Ref. 1512

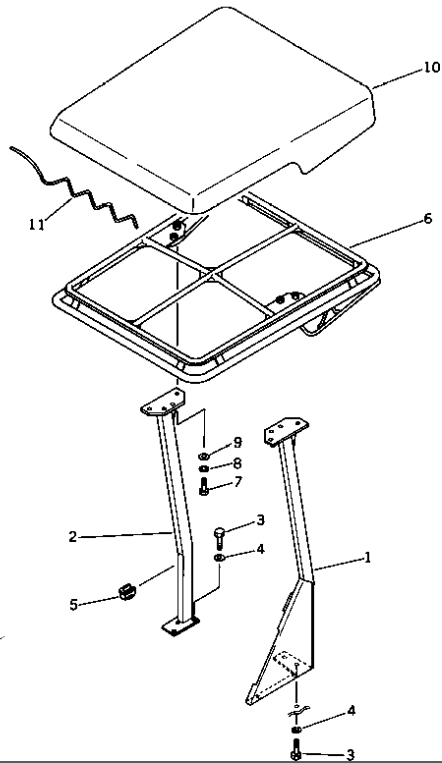
Page 150030

**PC10-2 S/N 4501-UP
MACHINE CAB (2/2)**

Item	Part No.	Description	Qty	Options
28	01643-01032	WASHER	4	SN:4501--
29	20N-54-23260	PIN	1	SN:4501--

PC10-2 S/N 4501-UP

Fig. 1521 キャノピー CANOPY



Ref. 1521

Page 150040

PC10-2 S/N 4501-UP
CANOPY

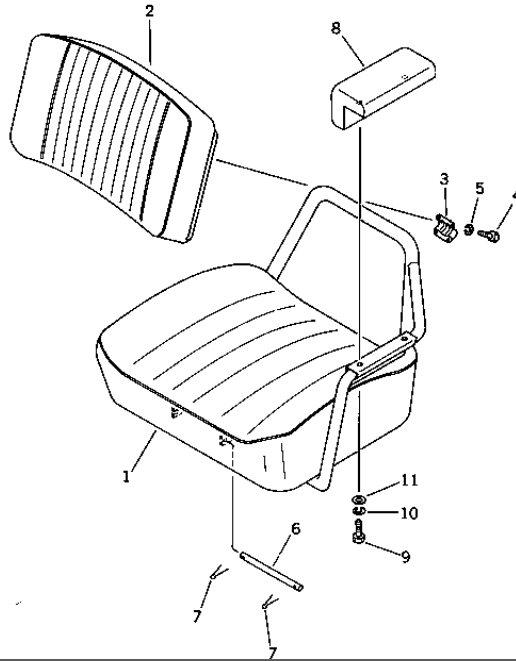
Item	Part No.	Description	Qty	Options
1	20N-54-25110	BRACKET,L.H.	1	SN:4501--
2	20N-54-25120	BRACKET,R.H.	1	SN:4501--
3	01010-31230	BOLT	7	SN:4501--
4	01602-01236	WASHER,SPRING	7	SN:4501--
5	20N-54-25210	SEAL	1	SN:4501--
6	20R-54-22110	ROOF	1	SN:4501--
7	01010-31025	BOLT	8	SN:4501--
8	01602-01030	WASHER,SPRING	8	SN:4501--
9	01643-01032	WASHER	8	SN:4501--
10	20M-54-13180	SEAT	1	SN:--
	□20R-54-22120	SHEET	1	SN:4501--.
11	20R-54-22130	ROPE	1	SN:4501--

Ref. 1521

Page 150040

PC10-2 S/N 4501-UP

オペレーターシート
Fig. 1531 OPERATOR'S SEAT



Ref. 1531

Page 150050

PC10-2 S/N 4501-UP
OPERATOR'S SEAT

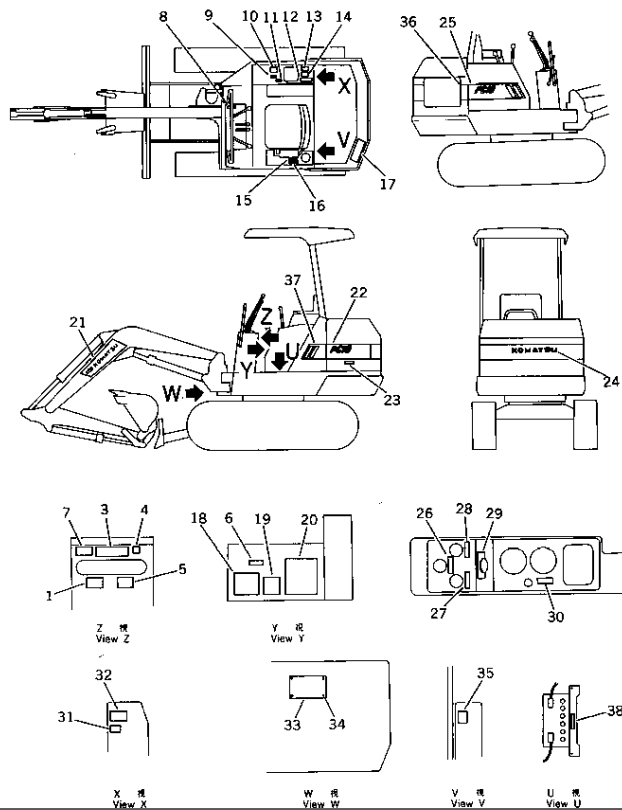
Item	Part No.	Description	Qty	Options
	20N-57-21100	SEAT ASS'Y	1	SN:4501--
1	20N-57-21110	· SEAT	1	SN:4501--
2	20R-57-21120	· SEAT,BACK	1	SN:4501--
3	20R-57-21130	· BRACKET	1	SN:4501--
4	01010-30612	· BOLT	4	SN:4501--
5	01602-00619	· WASHER,SPRING	4	SN:4501--
6	20R-57-11170	PIN	1	SN:4501--
7	04052-01038	PIN,SNAP	2	SN:4501--
8	201-57-11161	CUSHION,ARM	1	SN:4501--
9	01010-30835	BOLT	2	SN:4501--
10	01602-00825	WASHER,SPRING	2	SN:4501--
11	01643-00823	WASHER	2	SN:4501--

Ref. 1531

Page 150050

PC10-2 S/N 4501-UP

マーク および プレート
Fig. 1551 MARK AND PLATE



Ref. 1551

Page 150060

PC10-2 S/N 4501-UP
MARK AND PLATE

Item	Part No.	Description	Qty	Options
1	20N-54-16152	PLATEα SAFETY,PARKING	1	SN:4501--
3	20T-98-21120	PLATEα INSTRUCTION,OPERATING	1	SN:4501--
4	09173-00100	PLATEα SAFETY,INSPECTION AND MAINTENANCE	1	SN:4501--
5	20N-98-21110	PLATEα OPERATING,LOCK LEVER	1	SN:4501--
6	09131-00100	PLATEα SAFETY,SWING LOCK	1	SN:4501--
7	09651-00100	PLATEα SAFETY,BEFORE OPERATING	1	SN:4501--
8	20N-54-16170	PLATEα INSTRUCTION,ENGINE CONTROL	1	SN:4501--
9	09670-00002	PLATEα OPERATING,BLADE	1	SN:4501--
10	09653-00100	PLATEα SAFETY,HYDRAULIC TANK	1	SN:4501--
11	20T-98-21130	PLATEα OPERATING,SWING	1	SN:4501--
12	203-00-21190	PLATEα INSTRUCTION,HYDRAULIC OIL	1	SN:4501--
13	09656-01080	PLATEα INSTRUCTION,STRAINER	1	SN:4501--
14	203-00-21180	PLATEα CAUTION,HYDRAULIC OIL FILTER	1	SN:4501--
15	09652-01101	PLATEα CAUTION,FUEL TANK	1	SN:4501--
16	FF7820-87120	PLATEα INSTRUCTION,RECOMMENDED FUEL OIL	1	SN:4501--
17	20R-98-21130	PLATEα SAFETY,KEEP OUT OF TURNING AREA	1	SN:4501--
18	20R-54-15391	PLATEα CAUTION,TRACK LOADING INSTRUCTION	1	SN:4501--
19	20N-98-21260	PLATEα DATA	1	SN:4501--
20	20N-98-21250	CHARTα OIL	1	SN:4501--
21	20R-98-21140	PLATEα MARK,KOMATSU	1	SN:4501--
22	20N-98-21150	PLATEα MARK,PC10	1	SN:4501--
23	09667-00100	PLATEα SAFETY,ENGINE COVER	1	SN:4501--
24	20N-98-21170	PLATEα MARK,KOMATSU	1	SN:4501--
25	20N-98-21160	PLATEα MARK,PC10	1	SN:4501--
26	09609-00302	PLATEα NAME,OIL PRESSURE LAMP	1	SN:4501--
27	20N-98-21280	PLATEα NAME,THERMOSTART LAMP	1	SN:4501--
28	09609-00301	PLATEα NAME,CHARGE LAMP	1	SN:4501--

Ref. 1551

Page 150060

**PC10-2 S/N 4501-UP
MARK AND PLATE**

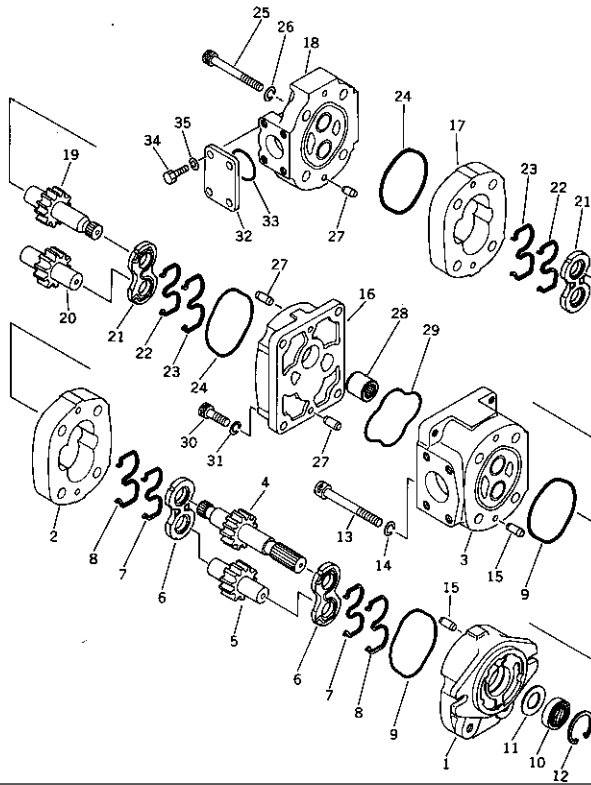
Item	Part No.	Description	Qty	Options
29	09683-01060	PLATE# OPERATING,STARTER SWITCH	1	SN:4501--
30	09609-00302	PLATE# NAME,LAMP SWITCH	1	SN:4501--
31	09668-00100	PLATE# SAFETY,RADIATOR CAP	1	SN:4501--
32	09650-01103	PLATE# INSTRUCTION,RADIATOR	1	SN:4501--
33	09601-00835	PLATE# NAME,(LIMITED SUPPLY)	1	SN:4501--
34	04418-13060	SCREW	4	SN:4501--
35	20N-98-21290	PLATE# CAUTION,FUEL FILTER	1	SN:4501--
36	20N-98-21190	PLATE# STRIPE	1	SN:4501--
37	20N-98-21180	PLATE# STRIPE	1	SN:4501--
38	20M-98-21220	PLATE# CAUTION,BATTERY	1	SN:4501--

**PC10-2 S/N 4501-UP
HYDRAULIC SYSTEM**

Item	Description	Qty	Page
10	HYDRAULIC TANDEM PUMP	1	180010
20	HYDRAULIC PUMP	1	180020
30	HYDRAULIC TANK	1	180030
40	HYDRAULIC FILTER	1	180040
50	3-SPOOL CONTROL VALVE \square L.H. (1/2)	1	180050
60	3-SPOOL CONTROL VALVE \square L.H. (2/2)	1	180060
70	3-SPOOL CONTROL VALVE \square R.H. (1/2)	1	180070
80	3-SPOOL CONTROL VALVE \square R.H. (2/2)	1	180080
90	2-SPOOL CONTROL VALVE (1/2)	1	180090
100	2-SPOOL CONTROL VALVE (2/2)	1	180100
110	SWING CYLINDER	1	180110
120	BOOM CYLINDER	1	180120
130	ARM CYLINDER	1	180130
140	BUCKET CYLINDER	1	180140
150	BLADE CYLINDER	1	180150
160	HYDRAULIC PIPING (TANK TO PUMP)	1	180160
170	HYDRAULIC PIPING (PUMP TO VALVE)	1	180170
180	HYDRAULIC PIPING (VALVE TO/FROM SWING CYLINDER)	1	180180
190	HYDRAULIC PIPING (VALVE TO/FROM BOOM CYLINDER)	1	180190
200	HYDRAULIC PIPING (VALVE TO/FROM ARM CYLINDER)	1	180200
210	HYDRAULIC PIPING (VALVE TO/FROM BUCKET CYLINDER)	1	180210
220	HYDRAULIC PIPING (VALVE TO/FROM BLADE CYLINDER)	1	180220
230	HYDRAULIC PIPING (VALVE TO TANK)	1	180230
240	VALVE CONTROL LEVER (PROPEL)	1	180240
250	VALVE CONTROL LEVER (BOOM \square ARM \square BUCKET AND SWING)	1	180250
260	VALVE CONTROL LEVER (BOOM SWING AND BLADE)	1	180260

PC10-2 S/N 4501-UP

ハイドロリック タンデム ポンプ
Fig. 1601 HYDRAULIC TANDEM PUMP



Ref. 1601

Page 180010

PC10-2 S/N 4501-UP
HYDRAULIC TANDEM PUMP

Item	Part No.	Description	Qty	Options
	705-52-10060	TANDEM PUMP ASS'Y	1	SN:4501--
	705-12-20230	· PUMP ASS'Y	1	SN:4501--
1	☆	· · BRACKET ASS'Y	1	SN:4501--
2	☆	· · CASE,GEAR	1	SN:4501--
3	☆	· · CARRIER ASS'Y	1	SN:4501--
4	☆	· · GEAR,DRIVE	1	SN:4501--
5	☆	· · GEAR,DRIVEN	1	SN:4501--
6	☆	· · PLATE,SIDE	2	SN:4501--
7	☆	· · RING,BACK-UP	2	SN:4501--
8	☆	· · SEAL,SEAL	2	SN:4501--
9	☆	· · O-RING	2	SN:4501--
10	704-17-01810	· · SEAL,OIL	1	SN:4501--
11	705-17-01870	· · PLATE	1	SN:4501--
12	04065-03515	· · RING,SNAP	1	SN:4501--
13	☆	· · BOLT	4	SN:4501--
14	☆	· · WASHER,SPRING	4	SN:4501--
15	☆	· · PIN,DOWEL	4	SN:4501--
	705-12-20530	· PUMP ASS'Y	1	SN:4501--
16	☆	· · BRACKET ASS'Y	1	SN:4501--
17	☆	· · CASE,GEAR	1	SN:4501--
18	☆	· · COVER	1	SN:4501--
19	☆	· · GEAR,DRIVE	1	SN:4501--
20	☆	· · GEAR,DRIVEN	1	SN:4501--
21	☆	· · PLATE,SIDE	2	SN:4501--
22	☆	· · RING,BACK-UP	2	SN:4501--
23	☆	· · SEAL,SEAL	2	SN:4501--
24	☆	· · O-RING	2	SN:4501--

Ref. 1601

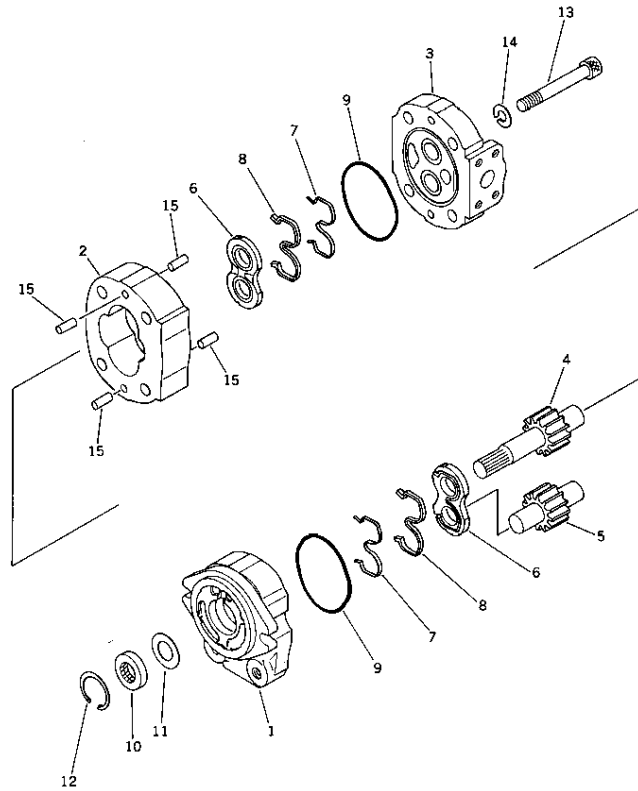
Page 180010

**PC10-2 S/N 4501-UP
HYDRAULIC TANDEM PUMP**

Item	Part No.	Description	Qty	Options
25	☆	· · BOLT	4	SN:4501--
26	☆	· · WASHER,SPRING	4	SN:4501--
27	☆	· · PIN,DOWEL	6	SN:4501--
28	705-17-01330	· COUPLING ASS'Y	1	SN:4501--
29	705-17-01480	· O-RING	1	SN:4501--
30	705-17-02374	· BOLT	4	SN:4501--
31	01602-21030	· WASHER,SPRING	4	SN:4501--
32	705-17-01880	· PLATE	1	SN:4501--
33	07000-03032	· O-RING	1	SN:4501--
34	01010-31025	· BOLT	4	SN:4501--
35	01602-01030	· WASHER,SPRING	4	SN:4501--

PC10-2 S/N 4501-UP

ハイドロリック ポンプ
Fig. 1602 HYDRAULIC PUMP



Ref. 1602

Page 180020

PC10-2 S/N 4501-UP
HYDRAULIC PUMP

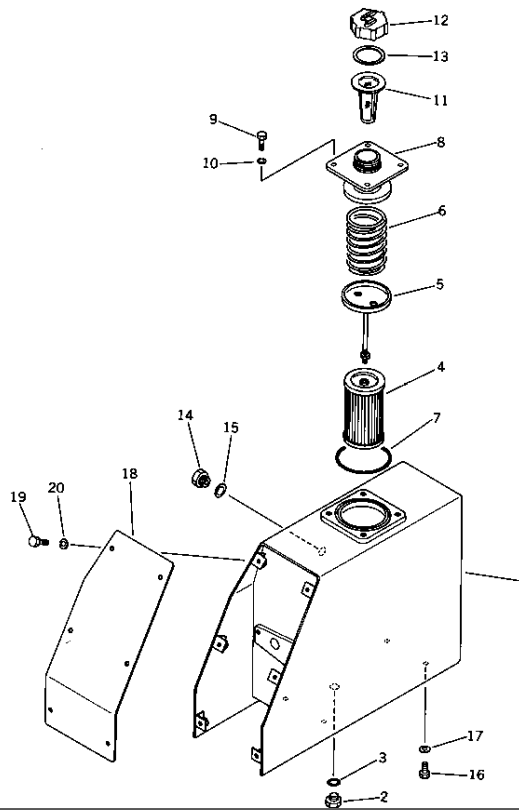
Item	Part No.	Description	Qty	Options
	705-22-20020	PUMP ASS'Y	1	SN:4501--
1	☆	· BRACKET	1	SN:4501--
2	☆	· CASE,GEAR	1	SN:4501--
3	☆	· COVER	1	SN:4501--
4	☆	· GEAR,DRIVE	1	SN:4501--
5	☆	· GEAR,DRIVEN	1	SN:4501--
6	☆	· PLATE,SIDE	2	SN:4501--
7	☆	· RING,BACK-UP	2	SN:4501--
8	☆	· SEAL,SEAL	2	SN:4501--
9	☆	· O-RING	2	SN:4501--
10	704-17-01810	· SEAL,OIL	1	SN:4501--
11	705-17-01870	· PLATE	1	SN:4501--
12	04065-03515	· RING,SNAP	1	SN:4501--
13	☆	· BOLT	4	SN:4501--
14	☆	· WASHER	4	SN:4501--
15	☆	· PIN,DOWEL	4	SN:4501--

Ref. 1602

Page 180020

PC10-2 S/N 4501-UP

Fig. 1611 HYDRAULIC TANK



Ref. 1611

Page 180030

PC10-2 S/N 4501-UP
HYDRAULIC TANK

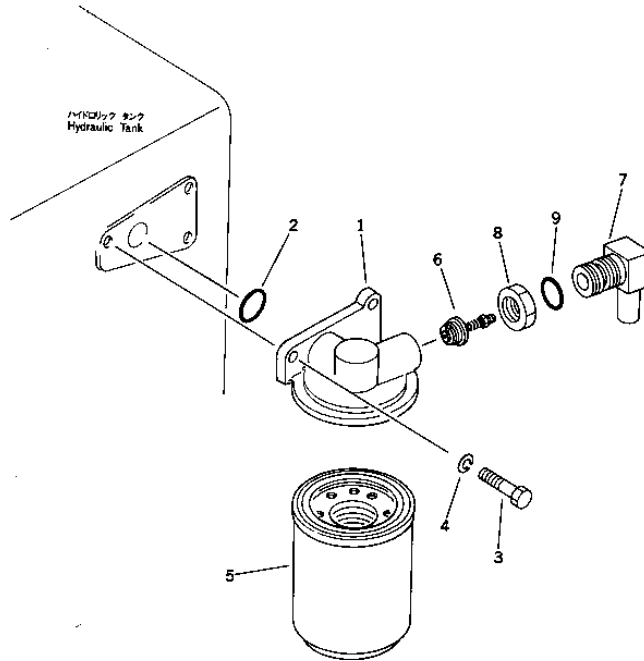
Item	Part No.	Description	Qty	Options
	20N-60-00110	TANK ASS'Y	1	SN:4501--
1	20N-60-21110	· TANK	1	SN:4501--
2	07044-12412	· PLUG	1	SN:4501--
3	07002-02434	· O-RING	1	SN:4501--
4	201-60-22150	· STRAINER	1	SN:4501--
5	20N-60-21130	· ROD	1	SN:4501--
6	154-60-12210	· SPRING	1	SN:4501--
7	07000-02130	· O-RING	1	SN:4501--
8	20N-60-11122	· COVER	1	SN:4501--
9	01010-31025	· BOLT	4	SN:4501--
10	01602-01030	· WASHER,SPRING	4	SN:4501--
11	07056-10045	· STRAINER	1	SN:4501--
12	07051-20000	· CAP	1	SN:4501--
13	07051-00003	· · GASKET	1	SN:4501--
14	20N-60-11141	· GAUGE,SIGHT	1	SN:4501--
15	20N-60-11180	· · GASKET	1	SN:4501--
16	01010-31225	BOLT	4	SN:4501--
17	01605-11226	WASHER	4	SN:4501--
18	20N-60-21150	COVER	1	SN:4501--
19	01010-31020	BOLT	6	SN:4501--
20	01602-01030	WASHER,SPRING	6	SN:4501--

Ref. 1611

Page 180030

PC10-2 S/N 4501-UP

Fig. 1615 HYDRAULIC FILTER



Ref. 1615

Page 180040

PC10-2 S/N 4501-UP
HYDRAULIC FILTER

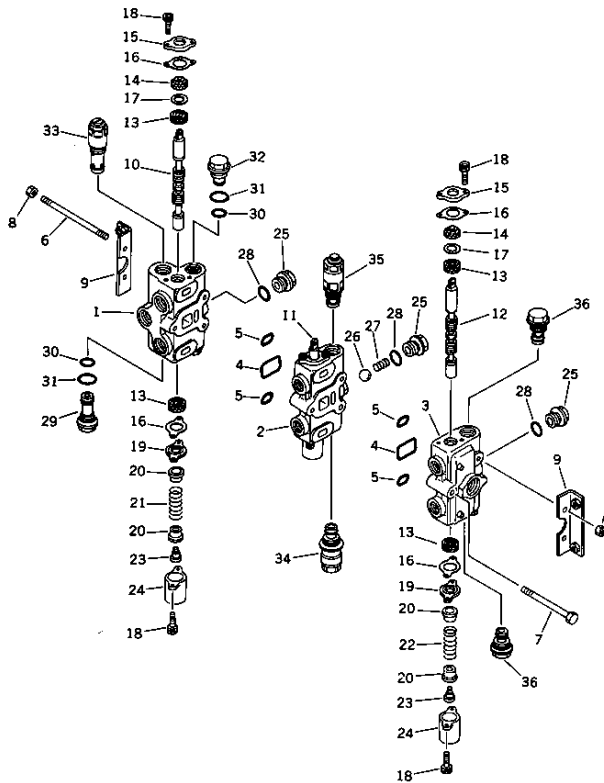
Item	Part No.	Description	Qty	Options
1	103-60-23250	BASE	1	SN:4501--
2	07000-03032	O-RING	1	SN:4501--
3	01010-31025	BOLT	3	SN:4501--
4	01602-01030	WASHER,SPRING	3	SN:4501--
5	103-60-23240	CARTRIDGE	1	SN:4501--
6	103-60-23260	VALVE	1	SN:4501--
7	103-60-23151	ELBOW	1	SN:4501--
8	113-60-23120	NUT	1	SN:4501--
9	07002-03334	O-RING	1	SN:4501--

Ref. 1615

Page 180040

PC10-2 S/N 4501-UP

Fig. 1621 3-SPOOL CONTROL VALVE, L.H. (3/2)



PC10-2 S/N 4501-UP
3-SPOOL CONTROL VALVE L.H. (1/2)

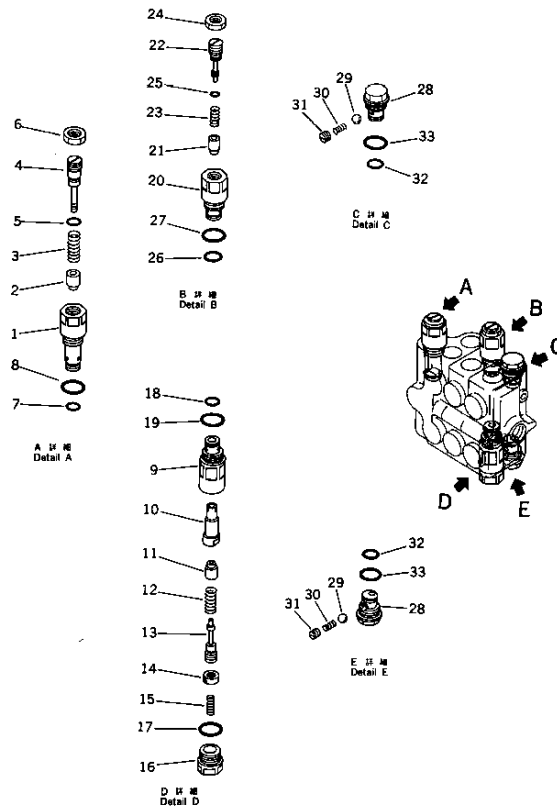
Item	Part No.	Description	Qty	Options
	700-23-34000	VALVE ASS'Y,L.H.	1	SN:4501--
1	☆	· BODY,VALVE	1	SN:4501--
2	☆	· BLOCK,VALVE	1	SN:4501--
3	☆	· COVER,VALVE	1	SN:4501--
4	07000-13040	· O-RING	2	SN:4501--
5	700-22-11450	· O-RING	4	SN:4501--
6	700-23-13110	· STUD	2	SN:4501--
7	700-23-13140	· BOLT	1	SN:4501--
8	01580-10806	· NUT	4	SN:4501--
9	700-26-11170	· ANGLE	2	SN:4501--
10	☆	· SPOOL	1	SN:4501--
11	☆	· SPOOL	1	SN:4501--
12	☆	· SPOOL	1	SN:4501--
13	700-22-11252	· U-PACKING	6	SN:4501--
14	700-22-11261	· SEAL,DUST	3	SN:4501--
15	700-22-11270	· PLATE	3	SN:4501--
16	700-22-11420	· GASKET	6	SN:4501--
17	700-22-11430	· COLLAR	3	SN:4501--
18	01252-30616	· BOLT	12	SN:4501--
19	700-22-11281	· PLATE	3	SN:4501--
20	700-22-11290	· RETAINER	6	SN:4501--
21	700-22-11311	· SPRING	2	SN:4501--
22	700-23-13130	· SPRING	1	SN:4501--
23	700-22-11320	· PLUG	3	SN:4501--
24	700-22-11331	· COVER	3	SN:4501--
25	700-22-11351	· PLUG	3	SN:4501--
26	700-22-12340	· BALL	1	SN:4501--

PC10-2 S/N 4501-UP
3-SPOOL CONTROL VALVE# L.H. (1/2)

Item	Part No.	Description	Qty	Options
27	700-22-12350	· SPRING	1	SN:4501--
28	07002-12434	· O-RING	3	SN:4501--
29	700-26-11150	· PLUG	1	SN:4501--
30	07000-12014	· O-RING	3	SN:4501--
31	07002-02434	· O-RING	3	SN:4501--
32	700-22-11360	· PLUG	2	SN:4501--
33	(700-22-53001)	· VALVE ASS'Y,MAIN RELIEF	1	SN:4501--
34	(700-20-72000)	· VALVE ASS'Y,SUCTION AND SAFETY	1	SN:4501--
35	(700-20-75000)	· VALVE ASS'Y,SUCTION AND SAFETY	1	SN:4501--
36	(700-20-81000)	· VALVE ASS'Y,SUCTION	2	SN:4501--

PC10-2 S/N 4501-UP

Fig. 1622 3-SPOOL CONTROL VALVE, L.H. (2/2)



Ref. 1622

Page 180060

PC10-2 S/N 4501-UP
3-SPOOL CONTROL VALVE L.H. (2/2)

Item	Part No.	Description	Qty	Options
	(700-23-34001)	VALVE ASS'Y,L.H.	1	SN:4501--
	700-22-53001	· VALVE ASS'Y,MAIN RELIEF	1	SN:4501--
1	☆	· · SLEEVE	1	SN:4501--
2	☆	· · POPPET	1	SN:4501--
3	700-80-62230	· · SPRING	1	SN:4501--
4	☆	· · PISTON	1	SN:4501--
5	07000-02010	· · O-RING	1	SN:4501--
6	☆	· · NUT	1	SN:4501--
7	07000-12014	· · O-RING	1	SN:4501--
8	07002-02434	· · O-RING	1	SN:4501--
	700-20-72000	· VALVE ASS'Y,SUCTION AND SAFETY	1	SN:4501--
9	☆	· · SLEEVE	1	SN:4501--
10	☆	· · VALVE	1	SN:4501--
11	☆	· · POPPET	1	SN:4501--
12	☆	· · SPRING	1	SN:4501--
13	☆	· · PISTON	1	SN:4501--
14	☆	· · NUT	1	SN:4501--
15	☆	· · SPRING	1	SN:4501--
16	☆	· · PLUG	1	SN:4501--
17	07002-12434	· · O-RING	1	SN:4501--
18	07002-12014	· · O-RING	1	SN:4501--
19	07002-02434	· · O-RING	1	SN:4501--
	700-20-75000	· VALVE ASS'Y,SUCTION AND SAFETY	1	SN:4501--
20	☆	· · SLEEVE	1	SN:4501--
21	☆	· · POPPET	1	SN:4501--
22	☆	· · PISTON	1	SN:4501--
23	☆	· · SPRING	1	SN:4501--

Ref. 1622

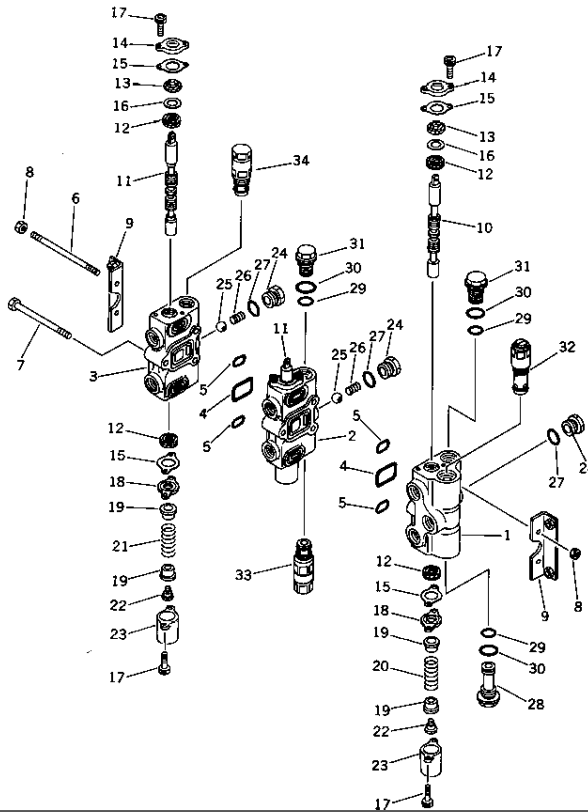
Page 180060

**PC10-2 S/N 4501-UP
3-SPOOL CONTROL VALVE# L.H. (2/2)**

Item	Part No.	Description	Qty	Options
24	☆	· · NUT	1	SN:4501--
25	☆	· · O-RING	1	SN:4501--
26	07000-12014	· · O-RING	1	SN:4501--
27	07002-02434	· · O-RING	1	SN:4501--
	700-20-81000	· VALVE ASS'Y,SUCTION	2	SN:4501--
28	☆	· · SLEEVE	1	SN:4501--
29	☆	· · BALL	1	SN:4501--
30	☆	· · SPRING	1	SN:4501--
31	☆	· · SCREW	1	SN:4501--
32	07000-12014	· · O-RING	1	SN:4501--
33	07002-02434	· · O-RING	1	SN:4501--

PC10-2 S/N 4501-UP

Fig. 1623 3-SPOOL CONTROL VALVE, R.H. (1/2)



PC10-2 S/N 4501-UP
3-SPOOL CONTROL VALVE R.H. (1/2)

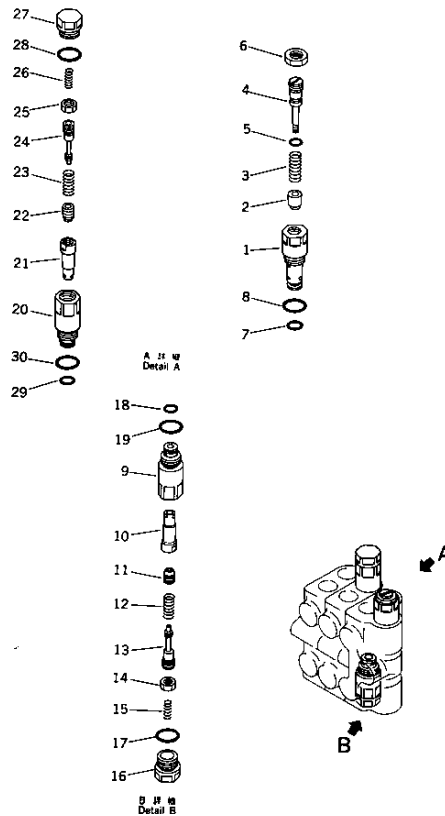
Item	Part No.	Description	Qty	Options
	700-23-33000	VALVE ASS'Y,R.H.	1	SN:4501--
1	☆	· BODY,VALVE	1	SN:4501--
2	☆	· BLOCK,VALVE	1	SN:4501--
3	☆	· COVER,VALVE	1	SN:4501--
4	07000-13040	· O-RING	2	SN:4501--
5	700-22-11450	· O-RING	4	SN:4501--
6	700-23-13110	· STUD	2	SN:4501--
7	700-23-13140	· BOLT	1	SN:4501--
8	01580-10806	· NUT	4	SN:4501--
9	700-26-11170	· ANGLE	2	SN:4501--
10	☆	· SPOOL	1	SN:4501--
11	☆	· SPOOL	2	SN:4501--
12	700-22-11252	· U-PACKING	6	SN:4501--
13	700-22-11261	· SEAL,DUST	3	SN:4501--
14	700-22-11270	· PLATE	3	SN:4501--
15	700-22-11420	· GASKET	6	SN:4501--
16	700-22-11430	· COLLAR	3	SN:4501--
17	01252-30616	· BOLT	12	SN:4501--
18	700-22-11281	· PLATE	3	SN:4501--
19	700-22-11290	· RETAINER	6	SN:4501--
20	700-22-11311	· SPRING	2	SN:4501--
21	700-23-13130	· SPRING	1	SN:4501--
22	700-22-11320	· PLUG	3	SN:4501--
23	700-22-11331	· COVER	3	SN:4501--
24	700-22-11351	· PLUG	3	SN:4501--
25	700-22-12340	· BALL	2	SN:4501--
26	700-22-12350	· SPRING	2	SN:4501--

PC10-2 S/N 4501-UP
3-SPOOL CONTROL VALVE R.H. (1/2)

Item	Part No.	Description	Qty	Options
27	07002-12434	· O-RING	3	SN:4501--
28	700-22-11380	· PLUG	1	SN:4501--
29	07000-12014	· O-RING	5	SN:4501--
30	07002-02434	· O-RING	6	SN:4501--
31	700-22-11360	· PLUG	4	SN:4501--
32	(700-22-53001)	· VALVE ASS'Y,MAIN RELIEF	1	SN:4501--
33	(700-20-72000)	· VALVE ASS'Y,SUCTION AND SAFETY	1	SN:4501--
34	(700-20-65000)	· VALVE ASS'Y,SUCTION AND SAFETY	1	SN:4501--

PC10-2 S/N 4501-UP

Fig. 1624 3-SPOOL CONTROL VALVE, R.H. (2/2)



Ref. 1624

Page 180080

PC10-2 S/N 4501-UP
3-SPOOL CONTROL VALVE R.H. (2/2)

Item	Part No.	Description	Qty	Options
	(700-23-33000)	VALVE ASS'Y,R.H.	1	SN:4501--
	700-22-53001	· VALVE ASS'Y,MAIN RELIEF	1	SN:4501--
1	☆	· · SLEEVE	1	SN:4501--
2	☆	· · POPPET	1	SN:4501--
3	700-20-62230	· · SPRING	1	SN:4501--
4	☆	· · PISTON	1	SN:4501--
5	07000-02010	· · O-RING	1	SN:4501--
6	☆	· · NUT	1	SN:4501--
7	07000-12014	· · O-RING	1	SN:4501--
8	07002-02434	· · O-RING	1	SN:4501--
	700-20-72000	· VALVE ASS'Y,SUCTION AND SAFETY	1	SN:4501--
9	☆	· · SLEEVE	1	SN:4501--
10	☆	· · VALVE	1	SN:4501--
11	☆	· · POPPET	1	SN:4501--
12	☆	· · SPRING	1	SN:4501--
13	☆	· · PISTON	1	SN:4501--
14	☆	· · NUT	1	SN:4501--
15	☆	· · SPRING	1	SN:4501--
16	☆	· · PLUG	1	SN:4501--
17	07002-12434	· · O-RING	1	SN:4501--
18	07000-12014	· · O-RING	1	SN:4501--
19	07002-02434	· · O-RING	1	SN:4501--
	700-20-65000	· VALVE ASS'Y,SUCTION AND SAFETY	1	SN:4501--
20	☆	· · SLEEVE	1	SN:4501--
21	☆	· · VALVE	1	SN:4501--
22	☆	· · POPPET	1	SN:4501--
23	☆	· · SPRING	1	SN:4501--

Ref. 1624

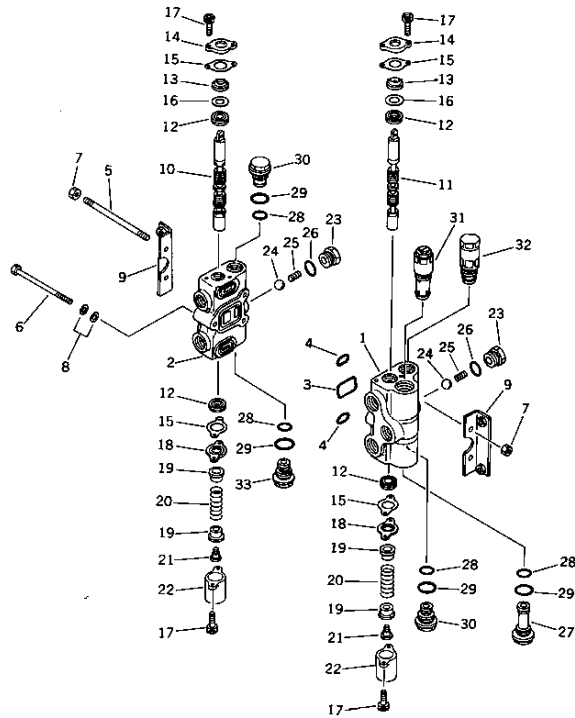
Page 180080

**PC10-2 S/N 4501-UP
3-SPOOL CONTROL VALVE R.H. (2/2)**

Item	Part No.	Description	Qty	Options
24	☆	· · PISTON	1	SN:4501--
25	☆	· · NUT	1	SN:4501--
26	☆	· · SPRING	1	SN:4501--
27	☆	· · PLUG	1	SN:4501--
28	07002-12434	· · O-RING	1	SN:4501--
29	07000-12014	· · O-RING	1	SN:4501--
30	07002-02434	· · O-RING	1	SN:4501--

PC10-2 S/N 4501-UP

Fig. 1625 2-SPOOL CONTROL VALVE (1/2)



PC10-2 S/N 4501-UP
2-SPOOL CONTROL VALVE (1/2)

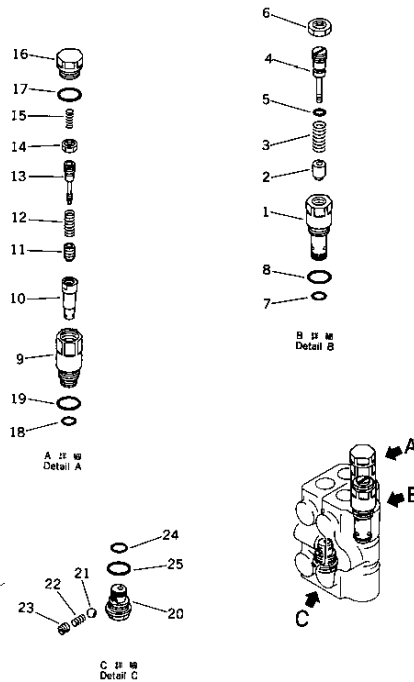
Item	Part No.	Description	Qty	Options
	700-22-37000	VALVE ASS'Y	1	SN:4501--
1	☆	· BODY, VALVE	1	SN:4501--
2	☆	· COVER, VALVE	1	SN:4501--
3	07000-13040	· O-RING	1	SN:4501--
4	700-22-11450	· O-RING	2	SN:4501--
5	700-21-11110	· STUD	2	SN:4501--
6	700-81-11212	· BOLT	1	SN:4501--
7	01580-10806	· NUT	4	SN:4501--
8	01643-31032	· WASHER	2	SN:4501--
9	700-26-11170	· ANGLE	2	SN:4501--
10	☆	· SPOOL	1	SN:4501--
11	☆	· SPOOL	1	SN:4501--
12	700-22-11252	· U-PACKING	4	SN:4501--
13	700-26-11261	· SEAL, DUST	2	SN:4501--
14	700-22-11270	· PLATE	2	SN:4501--
15	700-22-11420	· GASKET	4	SN:4501--
16	700-22-11430	· COLLAR	2	SN:4501--
17	01252-30616	· BOLT	8	SN:4501--
18	700-22-11281	· PLATE	2	SN:4501--
19	700-22-11290	· RETAINER	4	SN:4501--
20	700-22-11311	· SPRING	2	SN:4501--
21	700-22-11320	· PLUG	2	SN:4501--
22	700-22-11331	· COVER	2	SN:4501--
23	700-22-11351	· PLUG	2	SN:4501--
24	700-22-12340	· BALL	2	SN:4501--
25	700-22-12350	· SPRING	2	SN:4501--
26	07002-12434	· O-RING	2	SN:4501--

**PC10-2 S/N 4501-UP
2-SPOOL CONTROL VALVE (1/2)**

Item	Part No.	Description	Qty	Options
27	700-26-11150	· PLUG	1	SN:4501--
28	07000-12014	· O-RING	3	SN:4501--
29	07002-02434	· O-RING	3	SN:4501--
30	700-22-11360	· PLUG	3	SN:4501--
31	(700-21-51000)	· VALVE ASS'Y,MAIN RELIEF	1	SN:4501--
32	(700-20-72000)	· VALVE ASS'Y,SUCTION AND SAFETY	1	SN:4501--
33	(700-20-81000)	· VALVE ASS'Y,SUCTION	1	SN:4501--

PC10-2 S/N 4501-UP

Fig. 1626 2-SPOOL CONTROL VALVE (2/2)



PC10-2 S/N 4501-UP
2-SPOOL CONTROL VALVE (2/2)

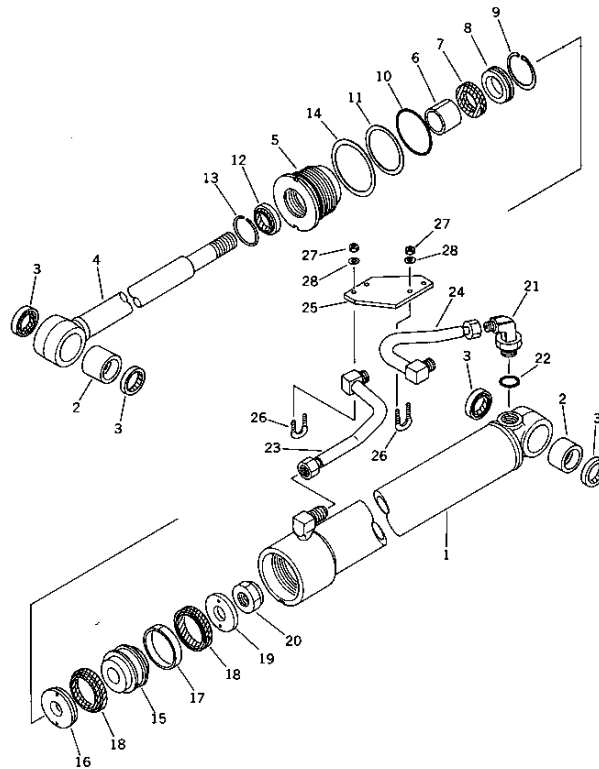
Item	Part No.	Description	Qty	Options
	(700-22-37000)	VALVE ASS'Y	1	SN:4501--
	700-21-51000	· VALVE ASS'Y,MAIN RELIEF	1	SN:4501--
1	☆	· · SLEEVE	1	SN:4501--
2	☆	· · POPPET	1	SN:4501--
3	☆	· · SPRING	1	SN:4501--
4	☆	· · PISTON	1	SN:4501--
5	07000-02010	· · O-RING	1	SN:4501--
6	☆	· · NUT	1	SN:4501--
7	07000-12014	· · O-RING	1	SN:4501--
8	07002-02434	· · O-RING	1	SN:4501--
	700-20-72000	· VALVE ASS'Y,SUCTION AND SAFETY	1	SN:4501--
9	☆	· · SLEEVE	1	SN:4501--
10	☆	· · VALVE	1	SN:4501--
11	☆	· · POPPET	1	SN:4501--
12	☆	· · SPRING	1	SN:4501--
13	☆	· · PISTON	1	SN:4501--
14	☆	· · NUT	1	SN:4501--
15	☆	· · SPRING	1	SN:4501--
16	☆	· · PLUG	1	SN:4501--
17	07000-12014	· · O-RING	1	SN:4501--
18	07002-12434	· · O-RING	1	SN:4501--
19	07002-02434	· · O-RING	1	SN:4501--
	700-20-81000	· VALVE ASS'Y,SUCTION	1	SN:4501--
20	☆	· · SLEEVE	1	SN:4501--
21	☆	· · BALL	1	SN:4501--
22	☆	· · SPRING	1	SN:4501--
23	☆	· · SCREW	1	SN:4501--

**PC10-2 S/N 4501-UP
2-SPOOL CONTROL VALVE (2/2)**

Item	Part No.	Description	Qty	Options
24	07000-12014	· · O-RING	1	SN:4501--
25	07002-02434	· · O-RING	1	SN:4501--

PC10-2 S/N 4501-UP

Fig. 1631 SWING CYLINDER



Ref. 1631

Page 180110

PC10-2 S/N 4501-UP SWING CYLINDER

Item	Part No.	Description	Qty	Options
	20R-63-86300	CYLINDER ASS'Y, SWING	1	SN:4501--
1	20R-63-86141	· CYLINDER	1	SN:4501--
2	07143-10303	· BUSHING	2	SN:4501--
3	07145-00030	· SEAL, DUST	4	SN:4501--
4	20R-63-86120	· ROD, PISTON	1	SN:4501--
5	707-29-60010	· HEAD, CYLINDER	2	SN:4501--
6	07177-03025	· BUSHING	1	SN:4301--
7	707-51-30110	· PACKING, ROD	1	SN:4501--
8	707-57-30010	· RETAINER	1	SN:4501--
9	04065-04718	· RING, SNAP	1	SN:4501--
10	07000-12065	· O-RING	1	SN:4501--
11	07001-02065	· RING, BACK-UP	1	SN:4501--
12	707-56-30510	· SEAL, DUST	1	SN:4501--
13	07179-00049	· RING, SNAP	1	SN:4501--
14	707-45-60010	· RING	1	SN:4501--
15	102-61-17331	· PISTON	1	SN:4501--
16	102-63-32380	· RETAINER	1	SN:4501--
17	07155-00615	· RING, WEAR	1	SN:4501--
18	707-42-60012	· PACKING, PISTON	2	SN:4501--
19	102-63-32390	· RETAINER	1	SN:4501--
20	07165-12222	· NUT, NYLON	1	SN:4501--
21	07235-10315	· ELBOW	1	SN:4501--
22	07002-12034	· O-RING	1	SN:4501--
23	20N-62-22120	· TUBE	1	SN:4501--
24	20N-62-22110	· TUBE	1	SN:4501--
25	20N-62-22130	· PLATE	1	SN:4501--
26	07283-21529	· CLIP	2	SN:4501--

Ref. 1631

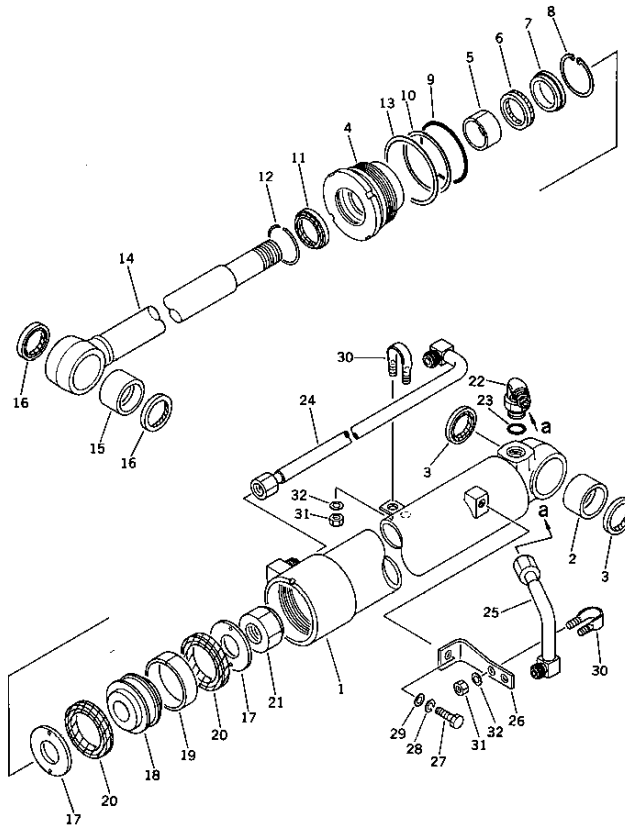
Page 180110

PC10-2 S/N 4501-UP
SWING CYLINDER

Item	Part No.	Description	Qty	Options
27	01598-00809	· NUT	4	SN:4501--
28	01643-30823	· WASHER	4	SN:4501--

PC10-2 S/N 4501-UP

Fig. 1632 BOOM CYLINDER



Ref. 1632

Page 180120

PC10-2 S/N 4501-UP
BOOM CYLINDER

Item	Part No.	Description	Qty	Options
	20N-63-56101	CYLINDER ASS'Y,BOOM	1	SN:4501--
1	20N-63-56140	· CYLINDER	1	SN:4501--
2	07143-10304	· BUSHING	1	SN:4501--
3	07145-00035	· SEAL,DUST	2	SN:4501--
4	707-29-70010	· HEAD,CYLINDER	1	SN:4501--
5	07177-03525	· BUSHING	1	SN:4501--
6	707-51-35110	· PACKING,ROD	1	SN:4501--
7	707-57-35010	· RETAINER	1	SN:4501--
8	04065-05220	· RING,SNAP	1	SN:4501--
9	07000-12075	· O-RING	1	SN:4501--
10	07001-02075	· RING,BACK-UP	1	SN:4501--
11	175-63-75190	· SEAL,DUST	1	SN:4501--
12	07179-00054	· RING,SNAP	1	SN:4501--
13	707-45-70010	· WASHER	1	SN:4501--
14	20N-63-56120	· ROD,PISTON	1	SN:4501--
15	07143-10304	· BUSHING	1	SN:4501--
16	07145-00035	· SEAL,DUST	2	SN:4501--
17	10E-63-66280	· RETAINER	2	SN:4501--
18	10E-63-66170	· PISTON	1	SN:4501--
19	07155-00720	· RING,WEAR	1	SN:4501--
20	112-63-12462	· PACKING,PISTON	1	SN:4501--
21	07165-12729	· NUT,NYLON	1	SN:4501--
22	07235-10315	· ELBOW	1	SN:4501--
23	07002-12034	· O-RING	1	SN:4501--
24	20N-63-56170	· TUBE	1	SN:4501--
25	20N-63-56180	· TUBE	1	SN:4501--
26	20N-63-56290	· PLATE	1	SN:4501--

Ref. 1632

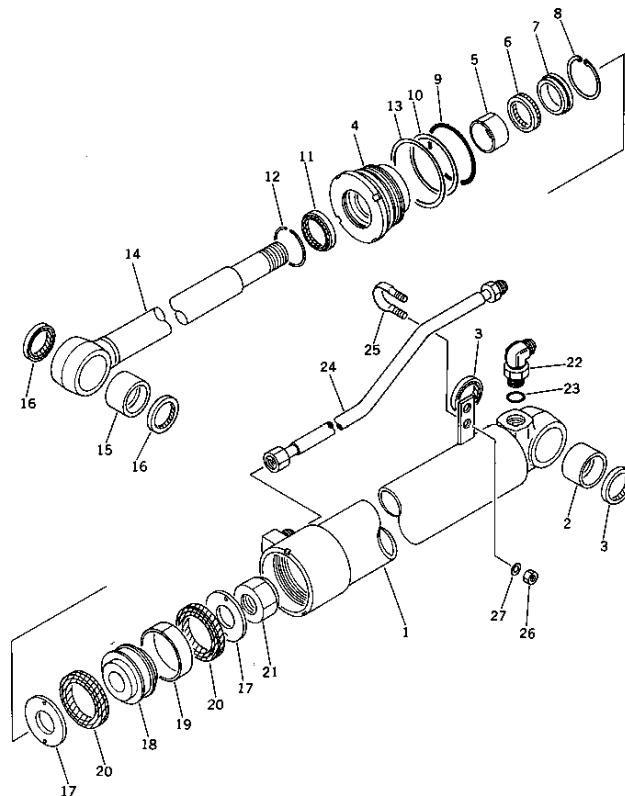
Page 180120

**PC10-2 S/N 4501-UP
BOOM CYLINDER**

Item	Part No.	Description	Qty	Options
27	01010-31025	· BOLT	1	SN:4501--
28	01602-01030	· WASHER,SPRING	1	SN:4501--
29	01643-31032	· WASHER	1	SN:4501--
30	07283-21529	· CLIP	2	SN:4501--
31	01598-00809	· NUT	4	SN:4501--
32	01643-30823	· WASHER	4	SN:4501--

PC10-2 S/N 4501-UP

Fig. 1633 ARM CYLINDER



Ref. 1633

Page 180130

PC10-2 S/N 4501-UP
ARM CYLINDER

Item	Part No.	Description	Qty	Options
	20N-63-66101	CYLINDER ASS'Y,ARM	1	SN:4501--
1	20N-63-66140	· CYLINDER	1	SN:4501--
2	07143-10304	· BUSHING	1	SN:4501--
3	07145-00035	· SEAL,DUST	2	SN:4501--
4	707-29-70010	· HEAD,CYLINDER	1	SN:4501--
5	07177-03525	· BUSHING	1	SN:4501--
6	707-51-35110	· PACKING,ROD	1	SN:4501--
7	707-57-35010	· RETAINER	1	SN:4501--
8	04065-05220	· RING,SNAP	1	SN:4501--
9	07000-12075	· O-RING	1	SN:4501--
10	07001-02075	· RING,BACK-UP	1	SN:4501--
11	175-63-75190	· SEAL,DUST	1	SN:4501--
12	07179-00054	· RING,SNAP	1	SN:4501--
13	707-45-70010	· WASHER	1	SN:4501--
14	20N-63-56120	· ROD,PISTON	1	SN:4501--
15	07143-10304	· BUSHING	1	SN:4501--
16	07145-00035	· SEAL,DUST	2	SN:4501--
17	10E-63-66280	· RETAINER	2	SN:4501--
18	10E-63-66170	· PISTON	1	SN:4501--
19	07155-00720	· RING,WEAR	1	SN:4501--
20	112-63-12462	· PACKING,PISTON	2	SN:4501--
21	07165-12729	· NUT,NYLON	1	SN:4501--
22	20N-63-66190	· ELBOW	1	SN:4501--
23	07002-12034	· O-RING	1	SN:4501--
24	20N-63-66170	· TUBE	1	SN:4501--
25	07283-21529	· CLIP	1	SN:4501--
26	01598-00809	· NUT	2	SN:4501--

Ref. 1633

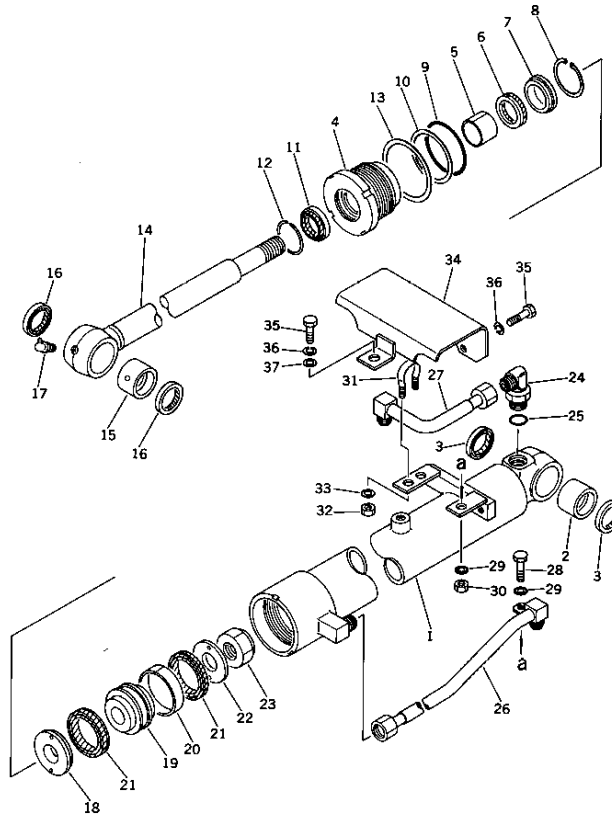
Page 180130

PC10-2 S/N 4501-UP
ARM CYLINDER

Item	Part No.	Description	Qty	Options
27	01643-30823	· WASHER	2	SN:4501--

PC10-2 S/N 4501-UP

Fig. 1634 BUCKET CYLINDER



Ref. 1634

Page 180140

PC10-2 S/N 4501-UP BUCKET CYLINDER

Item	Part No.	Description	Qty	Options
	20N-63-76101	CYLINDER ASS'Y,BUCKET	1	SN:4501--
1	20N-63-76140	· CYLINDER	1	SN:4501--
2	07143-10303	· BUSHING	1	SN:4501--
3	07145-00030	· SEAL,DUST	2	SN:4501--
4	707-29-60010	· HEAD,CYLINDER	1	SN:4501--
5	07177-03025	· BUSHING	1	SN:4501--
6	707-51-30110	· PACKING,ROD	1	SN:4501--
7	707-57-30010	· RETAINER	1	SN:4501--
8	04065-04718	· RING,SNAP	1	SN:4501--
9	07000-12065	· O-RING	1	SN:4501--
10	07001-02065	· RING,BACK-UP	1	SN:4501--
11	707-56-30510	· SEAL,DUST	1	SN:4501--
12	07179-00049	· RING,SNAP	1	SN:4501--
13	707-45-60010	· RING	1	SN:4501--
14	20N-63-76120	· ROD,PISTON	1	SN:4501--
15	07144-10303	· BUSHING	1	SN:4501--
16	07145-00030	· SEAL,DUST	2	SN:4501--
17	07020-00900	· FITTING,GREASE	1	SN:4501--
18	102-63-32380	· RETAINER	1	SN:4501--
19	102-61-17331	· PISTON	1	SN:4501--
20	07155-00615	· RING,WEAR	1	SN:4501--
21	102-63-32372	· PACKING,PISTON	2	SN:4501--
22	102-63-32390	· RETAINER	1	SN:4501--
23	07165-12222	· NUT,NYLON	1	SN:4501--
24	07235-10315	· ELBOW	1	SN:4501--
25	07002-12034	· O-RING	1	SN:4501--
26	20N-63-76170	· TUBE	1	SN:4501--

Ref. 1634

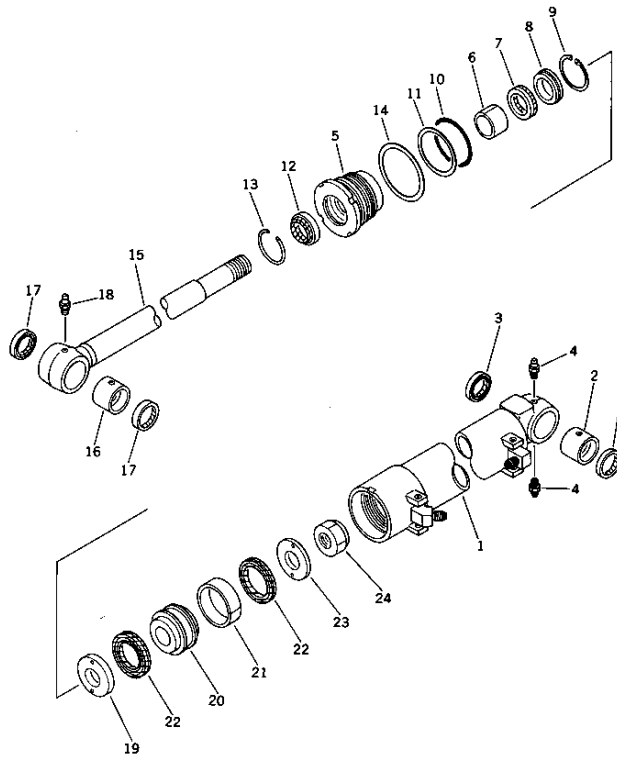
Page 180140

**PC10-2 S/N 4501-UP
BUCKET CYLINDER**

Item	Part No.	Description	Qty	Options
27	20N-63-76180	· TUBE	1	SN:4501--
28	01010-31025	· BOLT	1	SN:4501--
29	01605-11023	· WASHER	2	SN:4501--
30	01580-01008	· NUT	1	SN:4501--
31	07283-21529	· CLIP	1	SN:4501--
32	01598-00809	· NUT	2	SN:4501--
33	01643-30823	· WASHER	2	SN:4501--
34	20N-63-76290	· GUARD	1	SN:4501--
35	01010-31020	· BOLT	3	SN:4501--
36	01602-01030	· WASHER,SPRING	3	SN:4501--
37	01643-31032	· WASHER	1	SN:4501--

PC10-2 S/N 4501-UP

Fig. 1635 BLADE CYLINDER

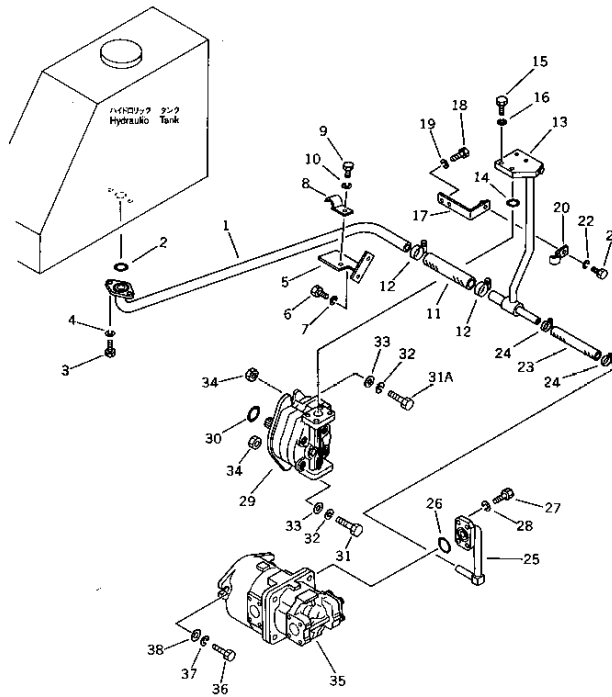


PC10-2 S/N 4501-UP
BLADE CYLINDER

Item	Part No.	Description	Qty	Options
	20R-63-96101	CYLINDER ASS'Y, BLADE	1	SN:4501--
1	20R-63-96140	· CYLINDER	1	SN:4501--
2	07144-10304	· BUSHING	1	SN:4501--
3	07145-00035	· SEAL, DUST	2	SN:4501--
4	07020-00000	· FITTING, GREASE	2	SN:4501--
5	707-29-70010	· HEAD, CYLINDER	1	SN:4501--
6	07177-03525	· BUSHING	1	SN:4501--
7	707-51-35110	· PACKING, ROD	1	SN:4501--
8	707-57-35010	· RETAINER	1	SN:4501--
9	04065-05520	· RING, SNAP	1	SN:4501--
10	07000-12075	· O-RING	1	SN:4501--
11	07001-02075	· RING, BACK-UP	1	SN:4501--
12	175-63-75190	· SEAL, DUST	1	SN:4501--
13	07179-00054	· RING, SNAP	1	SN:4501--
14	707-45-70010	· WASHER	1	SN:4501--
15	20R-63-96120	· ROD, PISTON	1	SN:4501--
16	07144-10304	· BUSHING	1	SN:4501--
17	07145-00035	· SEAL, DUST	2	SN:4501--
18	07020-00000	· FITTING, GREASE	1	SN:4501--
19	10E-63-66270	· RETAINER	1	SN:4501--
20	10E-63-66170	· PISTON	1	SN:4501--
21	07155-00720	· RING, WEAR	1	SN:4501--
22	112-63-12462	· PACKING, PISTON	2	SN:4501--
23	10E-63-66280	· RETAINER	1	SN:4501--
24	07165-12729	· NUT, NYLON	1	SN:4501--

PC10-2 S/N 4501-UP

Fig. 1641 HYDRAULIC PIPING (Tank To Pump)



Ref. 1641

Page 180160

PC10-2 S/N 4501-UP HYDRAULIC PIPING (TANK TO PUMP)

Item	Part No.	Description	Qty	Options
1	20N-62-21110	TUBE	1	SN:4501--
2	07000-03030	O-RING	1	SN:4501--
3	01010-31030	BOLT	2	SN:4501--
4	01602-01030	WASHER,SPRING	2	SN:4501--
5	20N-62-21140	BRACKET	1	SN:4501--
6	01010-31020	BOLT	2	SN:4501--
7	01602-01030	WASHER,SPRING	2	SN:4501--
8	20N-62-21190	CLAMP	1	SN:4501--
9	01010-31030	BOLT	1	SN:4501--
10	01602-01030	WASHER,SPRING	1	SN:4501--
11	07260-23218	HOSE	1	SN:4501--
12	07281-00489	CLAMP	2	SN:4501--
13	20N-62-21170	TUBE	1	SN:4501--
14	07000-03032	O-RING	1	SN:4501--
15	07372-21045	BOLT	4	SN:4501--
16	01602-01030	WASHER,SPRING	4	SN:4501--
17	20N-62-21180	PLATE	1	SN:4501--
18	01010-31020	BOLT	2	SN:4501--
19	01602-01030	WASHER,SPRING	2	SN:4501--
20	124-Z46-2450	CLAMP	1	SN:4501--
21	01010-31025	BOLT	1	SN:4501--
22	01602-01030	WASHER,SPRING	1	SN:4501--
23	07260-22618	HOSE	1	SN:4501--
24	07281-00419	CLAMP	2	SN:4501--
25	20N-62-21130	TUBE	1	SN:4501--
26	07000-03048	O-RING	1	SN:4501--
27	01010-31235	BOLT	4	SN:4501--

Ref. 1641

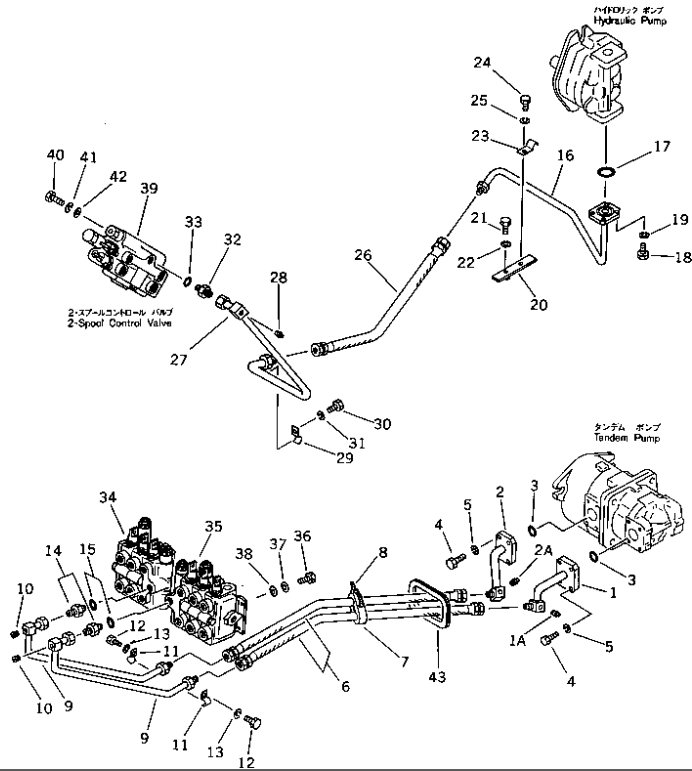
Page 180160

**PC10-2 S/N 4501-UP
HYDRAULIC PIPING (TANK TO PUMP)**

Item	Part No.	Description	Qty	Options
28	01602-01236	WASHER,SPRING	4	SN:4501--
29	(705-22-20020)	PUMP ASS'Y	1	SN:4501--
30	07000-02085	O-RING	1	SN:4501--
31	01010-31045	BOLT	1	SN:4501--
31A	01010-51055	BOLT	1	SN:4501--
32	01602-01030	WASHER,SPRING	2	SN:4501--
33	01643-31032	WASHER	2	SN:4501--
34	01580-11008	NUT	2	SN:4501--
35	(705-52-10060)	TANDEM PUMP ASS'Y	1	SN:4501--
36	01010-31030	BOLT	2	SN:4501--
37	01602-01030	WASHER,SPRING	2	SN:4501--
38	01643-01032	WASHER	2	SN:4501--

PC10-2 S/N 4501-UP

Fig. 1642 HYDRAULIC PIPING (Pump To Valve)



Ref. 1642

Page 180170

PC10-2 S/N 4501-UP
HYDRAULIC PIPING (PUMP TO VALVE)

Item	Part No.	Description	Qty	Options
1	20N-62-21211	TUBE	1	SN:4636--
	□20N-62-21210	TUBE	1	SN:4501--4635
1A	07042-20108	PLUG	1	SN:4636--
2	20N-62-21221	TUBE	1	SN:4636--
	□20N-62-21220	TUBE	1	SN:4501--4635
2A	07042-20108	PLUG	1	SN:4636--
3	07000-13030	O-RING	2	SN:4501--
4	01010-30830	BOLT	8	SN:4501--
5	01602-00825	WASHER,SPRING	8	SN:4501--
6	07123-00308	HOSE	2	SN:4501--
7	20N-62-21240	BUSHING	2	SN:4501--
8	08034-00834	BAND	2	SN:4501--
9	20N-62-21231	TUBE	2	SN:4636--
	20N-62-21230	TUBE	2	SN:4501--4635
10	07043-00108	PLUG	2	SN:4501--
11	T02-62-14140	CLAMP	2	SN:4501--
12	01010-31025	BOLT	2	SN:4501--
13	01602-01030	WASHER,SPRING	2	SN:4501--
14	07230-10522	UNION	2	SN:4501--
15	07002-12434	O-RING	2	SN:4501--
16	20N-62-21340	TUBE	1	SN:4501--
17	07000-13025	O-RING	1	SN:4501--
18	01010-30830	BOLT	4	SN:4501--
19	01602-00825	WASHER,SPRING	4	SN:4501--
20	20N-62-21330	PLATE	1	SN:4501--
21	01010-31025	BOLT	1	SN:4501--
22	01602-01030	WASHER,SPRING	1	SN:4501--

Ref. 1642

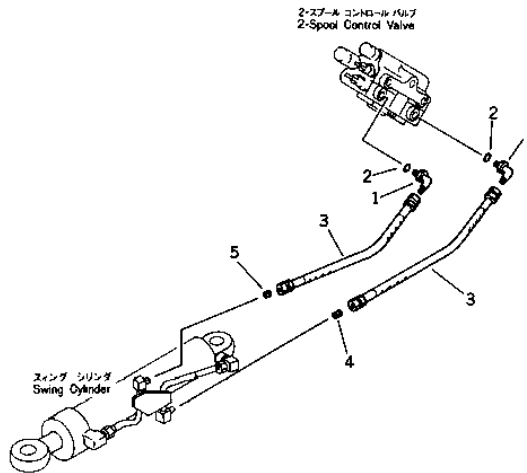
Page 180170

**PC10-2 S/N 4501-UP
HYDRAULIC PIPING (PUMP TO VALVE)**

Item	Part No.	Description	Qty	Options
23	T02-62-14140	CLAMP	1	SN:4501--
24	01010-31025	BOLT	1	SN:4501--
25	01602-01030	WASHER,SPRING	1	SN:4501--
26	07123-00304	HOSE	1	SN:4501--
27	20N-62-21320	TUBE	1	SN:4501--
28	07042-20108	PLUG	1	SN:4501--
29	T02-62-14140	CLAMP	1	SN:4501--
30	01010-31020	BOLT	1	SN:4501--
31	01602-01030	WASHER,SPRING	1	SN:4501--
32	07230-10522	UNION	1	SN:4501--
33	07002-12434	O-RING	1	SN:4501--
34	(700-23-33000)	VALVE ASS'Y	1	SN:4501--
35	(700-23-34000)	VALVE ASS'Y	1	SN:4501--
36	01010-30825	BOLT	6	SN:4501--
37	01602-00825	WASHER,SPRING	6	SN:4501--
38	01643-00823	WASHER	6	SN:4501--
39	(700-22-37000)	VALVE ASS'Y	1	SN:4501--
40	01010-30825	BOLT	3	SN:4501--
41	01602-00825	WASHER,SPRING	3	SN:4501--
42	01643-00823	WASHER	3	SN:4501--
43	20N-62-21250	GROMMET	1	SN:4501--

PC10-2 S/N 4501-UP

Fig. 1643 HYDRAULIC PIPING (Valve To / From Swing Cylinder)



Ref. 1643

Page 180180

PC10-2 S/N 4501-UP
HYDRAULIC PIPING (VALVE TO/FROM SWING CYLINDER)

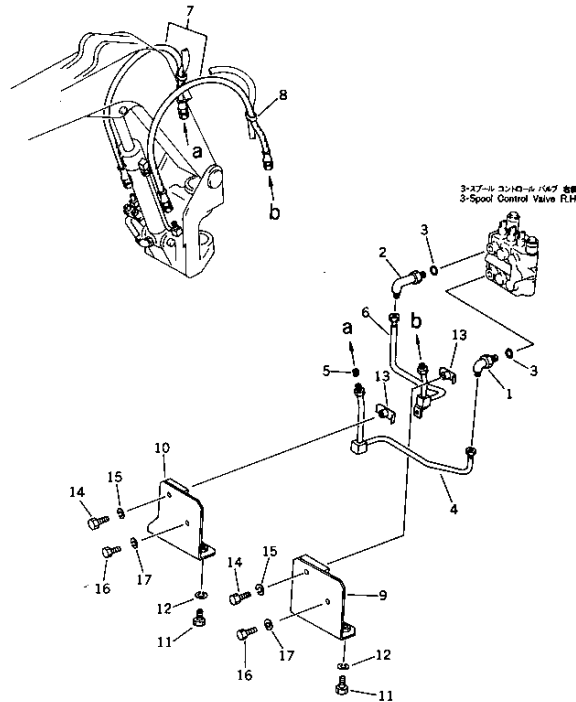
Item	Part No.	Description	Qty	Options
1	07235-10315	ELBOW	2	SN:4501--
2	07002-12034	O-RING	2	SN:4501--
3	07123-00304	HOSE	2	SN:4501--
4	20N-62-12550	PLUG	1	SN:4501--
5	20N-62-12560	PLUG	1	SN:4501--

Ref. 1643

Page 180180

PC10-2 S/N 4501-UP

Fig. 1644 HYDRAULIC PIPING (Valve To / From Boom Cylinder)
ハイドロリックパイピングバルブ ← → ブーム シリンダ

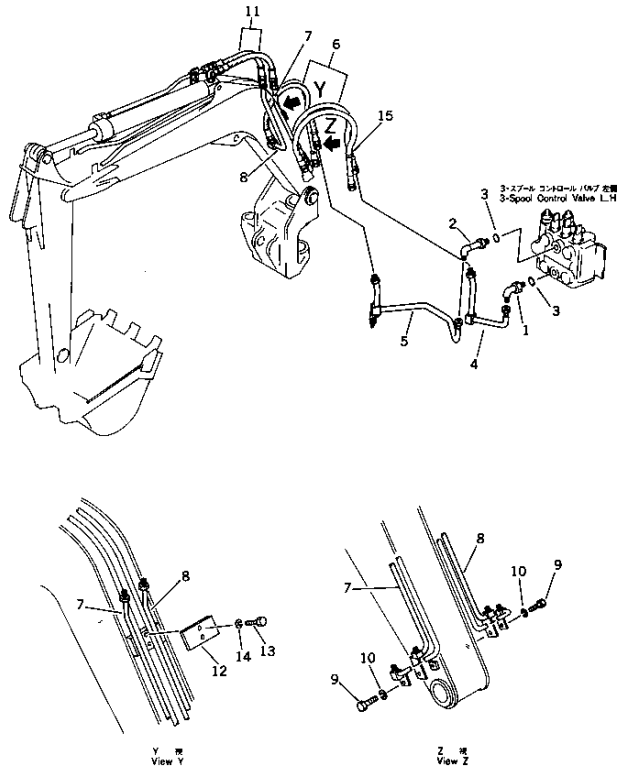


PC10-2 S/N 4501-UP HYDRAULIC PIPING (VALVE TO/FROM BOOM CYLINDER)

Item	Part No.	Description	Qty	Options
1	07235-10315	ELBOW	1	SN:4501--
2	20R-62-11311	ELBOW	1	SN:4501--
3	07002-12034	O-RING	2	SN:4501--
4	20N-62-22520	TUBE	1	SN:4501--
5	20N-62-14190	PLUG	1	SN:4501--
6	20N-62-22610	TUBE	1	SN:4501--
7	07123-40312	HOSE	2	SN:4501--
8	08034-00834	BAND	2	SN:4501--
9	20N-62-22570	BRACKET	1	SN:4501--
10	20N-62-22580	BRACKET	1	SN:4501--
11	01010-31020	BOLT	4	SN:4501--
12	01602-01030	WASHER,SPRING	4	SN:4501--
13	20N-62-22330	CLAMP	2	SN:--
	□T02-62-16390	CLAMP	2	SN:4501--
14	01010-31030	BOLT	2	SN:4501--
15	01602-01030	WASHER,SPRING	2	SN:4501--
16	01010-30820	BOLT	2	SN:4501--
17	01602-00825	WASHER,SPRING	2	SN:4501--

PC10-2 S/N 4501-UP

Fig. 1645 HYDRAULIC PIPING (Valve To / From Arm Cylinder)



Ref. 1645

Page 180200

PC10-2 S/N 4501-UP
HYDRAULIC PIPING (VALVE TO/FROM ARM CYLINDER)

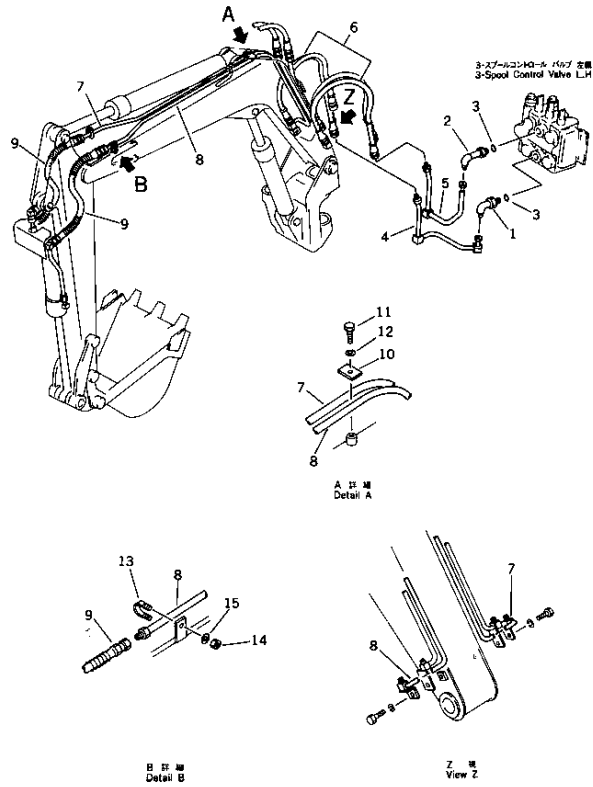
Item	Part No.	Description	Qty	Options
1	20R-62-11311	ELBOW	1	SN:4501--
2	20R-62-11360	ELBOW	1	SN:4501--
3	07002-12034	O-RING	2	SN:4501--
4	20N-62-22560	TUBE	1	SN:4501--
5	20N-62-22630	TUBE	1	SN:4501--
6	07123-40310	HOSE	2	SN:4501--
7	20N-62-14520	TUBE	1	SN:4501--
8	20N-62-14510	TUBE	1	SN:4501--
9	01010-31020	BOLT	2	SN:4501--
10	01602-01030	WASHER,SPRING	2	SN:4501--
11	07123-40205	HOSE	2	SN:4501--
12	20N-62-14610	PLATE	1	SN:4501--
13	01010-31035	BOLT	2	SN:4501--
14	01602-01030	WASHER,SPRING	2	SN:4501--
15	08034-00834	BAND	2	SN:4501--

Ref. 1645

Page 180200

PC10-2 S/N 4501-UP

Fig. 1646 HYDRAULIC PIPING (Valve To / From Bucket Cylinder)



Ref. 1646

Page 180210

PC10-2 S/N 4501-UP
HYDRAULIC PIPING (VALVE TO/FROM BUCKET CYLINDER)

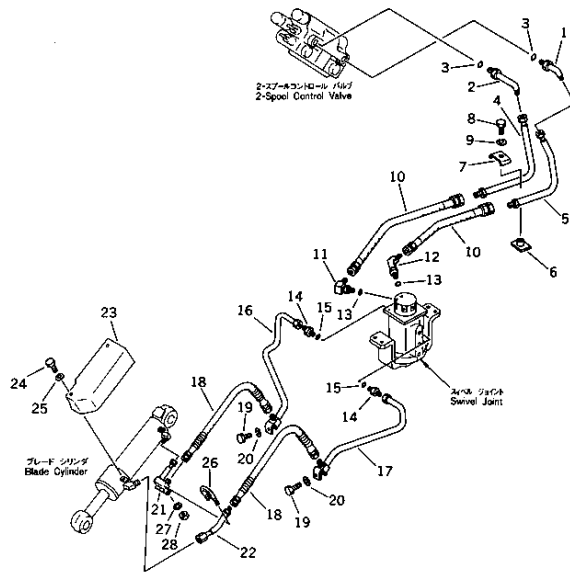
Item	Part No.	Description	Qty	Options
1	20R-62-11311	ELBOW	1	SN:4501--
2	20R-62-11360	ELBOW	1	SN:4501--
3	07002-12034	O-RING	2	SN:4501--
4	20N-62-22540	TUBE	1	SN:4501--
5	20N-62-22620	TUBE	1	SN:4501--
6	07123-40309	HOSE	2	SN:4501--
7	20N-62-14550	TUBE	1	SN:4501--
8	20N-62-14560	TUBE	1	SN:4501--
9	07123-20306	HOSE	2	SN:4501--
10	20N-62-14620	PLATE	1	SN:4501--
11	01010-30820	BOLT	1	SN:4501--
12	01602-00825	WASHER,SPRING	1	SN:4501--
13	07283-21529	CLIP	2	SN:4501--
14	01598-00809	NUT	4	SN:4501--
15	01643-30823	WASHER	4	SN:4501--

Ref. 1646

Page 180210

PC10-2 S/N 4501-UP

Fig. 1647 HYDRAULIC PIPING (Valve To / From Blade Cylinder)



PC10-2 S/N 4501-UP
HYDRAULIC PIPING (VALVE TO/FROM BLADE CYLINDER)

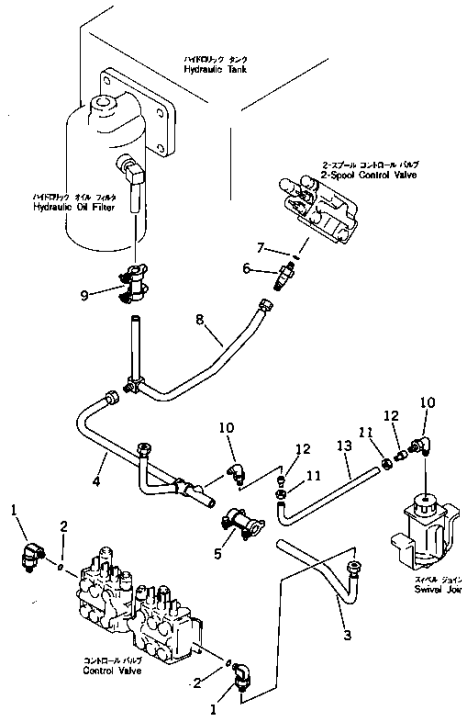
Item	Part No.	Description	Qty	Options
1	20R-62-11311	ELBOW	1	SN:4501--
2	20R-62-11360	ELBOW	1	SN:4501--
3	07002-12034	O-RING	2	SN:4501--
4	20N-62-22310	TUBE	1	SN:4501--
5	20N-62-22320	TUBE	1	SN:4501--
6	20N-62-22340	CLAMP	1	SN:--
	□T02-62-16390	CLAMP	1	SN:4501--
7	144-49-18560	PLATE	1	SN:4501--
8	01010-31020	BOLT	1	SN:4501--
9	01602-01030	WASHER,SPRING	1	SN:4501--
10	07123-00303	HOSE	2	SN:4501--
11	20D-62-12180	ELBOW	1	SN:4501--
12	20N-62-21880	ELBOW	1	SN:4501--
13	07002-11423	O-RING	2	SN:4501--
14	07230-10210	UNION	2	SN:4501--
15	07002-11423	O-RING	2	SN:4501--
16	20N-62-15511	TUBE	1	SN:4501--
17	20N-62-15521	TUBE	1	SN:4501--
18	07109-20205	HOSE	2	SN:4501--
19	01010-31020	BOLT	2	SN:4501--
20	01602-01030	WASHER,SPRING	2	SN:4501--
21	20N-62-15530	TUBE	1	SN:--
	□20R-910-1580	TUBE	1	SN:4501--
22	20N-62-15540	TUBE	1	SN:--
	□20R-910-1590	TUBE	1	SN:4501--
23	20R-910-1610	COVER	1	SN:4501--
24	01010-31020	BOLT	4	SN:4501--

PC10-2 S/N 4501-UP
HYDRAULIC PIPING (VALVE TO/FROM BLADE CYLINDER)

Item	Part No.	Description	Qty	Options
25	01602-01030	WASHER,SPRING	4	SN:4501--
26	07283-21022	CLIP	1	SN:4501--
27	01643-30623	WASHER	2	SN:4501--
28	01598-00608	NUT	2	SN:4501--

PC10-2 S/N 4501-UP

Fig. 1648 HYDRAULIC PIPING (Valve To Tank)

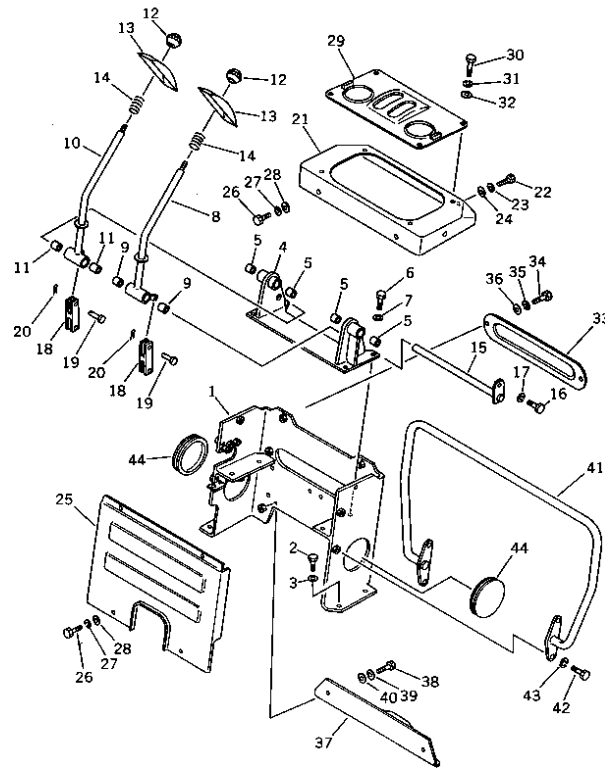


PC10-2 S/N 4501-UP
HYDRAULIC PIPING (VALVE TO TANK)

Item	Part No.	Description	Qty	Options
1	20T-62-51590	ELBOW	2	SN:4501--
2	07002-02434	O-RING	2	SN:4501--
3	20N-62-21510	TUBE	1	SN:4501--
4	20N-62-21520	TUBE	1	SN:4501--
5	07332-00400	COUPLING ASS'Y	1	SN:4501--
6	07236-10522	ELBOW	1	SN:4501--
7	07002-02434	O-RING	1	SN:4501--
8	20N-62-21530	TUBE	1	SN:4501--
9	07332-00400	COUPLING ASS'Y	1	SN:4501--
10	07834-00410	ELBOW	2	SN:4501--
11	07832-00410	NUT	2	SN:4501--
12	07831-00411	SLEEVE	2	SN:4501--
13	20N-62-21540	TUBE	1	SN:4501--

PC10-2 S/N 4501-UP

Fig. 1661 VALVE CONTROL LEVER (Propel)



Ref. 1661

Page 180240

PC10-2 S/N 4501-UP
VALVE CONTROL LEVER (PROPEL)

Item	Part No.	Description	Qty	Options
1	20N-43-21110	BRACKET	1	SN:4501--
2	01010-31025	BOLT	4	SN:4501--
3	01602-01030	WASHER, SPRING	4	SN:4501--
	20N-43-00100	BRACKET ASS'Y	1	SN:4501--
4	☆	· BRACKET	1	SN:4501--
5	20T-43-11280	· BUSHING	4	SN:4501--
6	01010-31025	BOLT	4	SN:4501--
7	01602-01030	WASHER	4	SN:4501--
	20N-43-00140	LEVER ASS'Y	1	SN:4501--
8	☆	· LEVER, L.H.	1	SN:4501--
9	20T-43-11280	· BUSHING	2	SN:4501--
	20N-43-00150	LEVER ASS'Y	1	SN:4501--
10	☆	· LEVER, R.H.	1	SN:4501--
11	20T-43-11280	· BUSHING	2	SN:4501--
12	20R-43-11280	KNOB	2	SN:4501--
13	20T-43-11260	COVER	2	SN:4501--
14	09340-10130	SPRING	2	SN:4501--
15	20N-43-21160	SHAFT	1	SN:4501--
16	01010-31020	BOLT	1	SN:4501--
17	01602-01030	WASHER, SPRING	1	SN:4501--
18	04213-20625	YOKE	2	SN:4501--
19	04205-10618	PIN	4	SN:4501--
20	04050-11610	PIN, COTTER	4	SN:4501--
21	20N-43-23180	COVER, UPPER	1	SN:4501--
22	01010-31025	BOLT	4	SN:4501--
23	01602-01030	WASHER, SPRING	4	SN:4501--
24	01640-21016	WASHER	4	SN:4501--

Ref. 1661

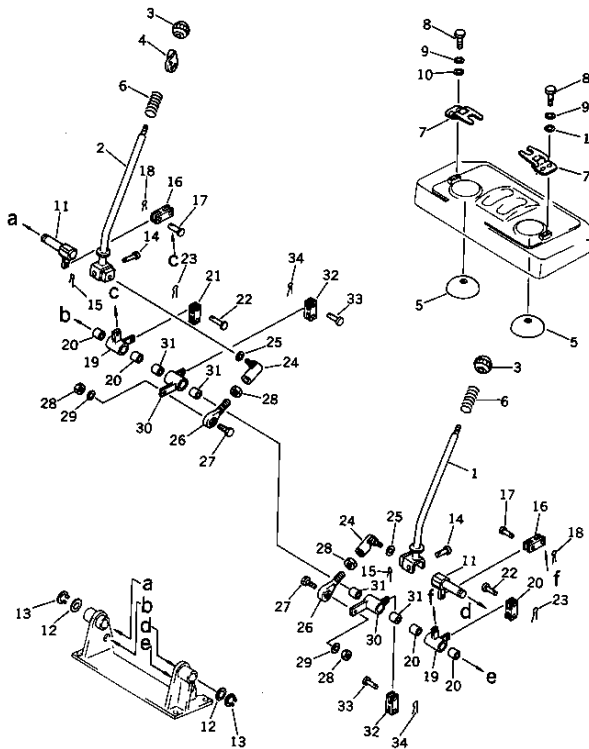
Page 180240

**PC10-2 S/N 4501-UP
VALVE CONTROL LEVER (PROPEL)**

Item	Part No.	Description	Qty	Options
25	20N-43-23120	COVER,FRONT	1	SN:4501--
26	01010-31025	BOLT	4	SN:4501--
27	01602-01030	WASHER,SPRING	4	SN:4501--
28	01640-21016	WASHER	4	SN:4501--
29	20N-43-23130	COVER	1	SN:4501--
30	01010-31025	BOLT	4	SN:4501--
31	01602-01030	WASHER,SPRING	4	SN:4501--
32	01640-21016	WASHER	4	SN:4501--
33	20N-43-23140	COVER	1	SN:4501--
34	01010-31025	BOLT	2	SN:4501--
35	01602-01030	WASHER,SPRING	2	SN:4501--
36	01640-21016	WASHER	2	SN:4501--
37	20N-43-23150	COVER	1	SN:4501--
38	01010-31025	BOLT	2	SN:4501--
39	01602-01030	WASHER,SPRING	2	SN:4501--
40	01640-21016	WASHER	2	SN:4501--
41	20N-43-23190	STAY	1	SN:4501--
42	01010-31025	BOLT	4	SN:4501--
43	01602-01030	WASHER,SPRING	4	SN:4501--
44	20N-43-23160	CAP	2	SN:4501--

PC10-2 S/N 4501-UP

Fig. 1662 VALVE CONTROL LEVER (Boom, Arm, Bucket and Swing)



PC10-2 S/N 4501-UP
VALVE CONTROL LEVER (BOOM, ARM, BUCKET AND SWING)

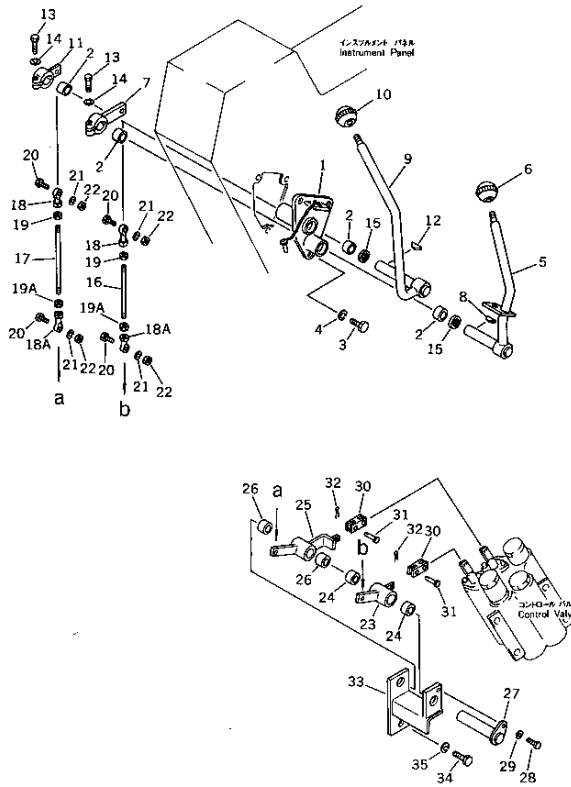
Item	Part No.	Description	Qty	Options
1	20N-43-21170	LEVER,L.H.	1	SN:4501--
2	20N-43-21240	LEVER,R.H.	1	SN:4501--
3	20R-43-11280	KNOB	2	SN:4501--
4	20T-06-11360	BRACKET	1	SN:4501--
5	20T-43-11360	COVER	2	SN:4501--
6	09340-10130	SPRING	2	SN:4501--
7	20T-43-11270	HINGE	2	SN:4501--
8	01010-30616	BOLT	4	SN:4501--
9	01602-00619	WASHER,SPRING	4	SN:4501--
10	01640-20610	WASHER	4	SN:4501--
11	20N-43-21180	LEVER	2	SN:4501--
12	01640-22032	WASHER	2	SN:4501--
13	04064-02012	RING,SNAP	2	SN:4501--
14	20T-43-11310	PIN	2	SN:4501--
15	04050-13020	PIN,COTTER	2	SN:4501--
16	04213-20830	YOKE	2	SN:4501--
17	04205-10822	PIN	4	SN:4501--
18	04050-12012	PIN,COTTER	4	SN:4501--
	20N-43-00120	LEVER ASS'Y	2	SN:4501--
19	☆	· LEVER	1	SN:4501--
20	20T-43-11280	· BUSHING	2	SN:4501--
21	04213-20625	YOKE	2	SN:4501--
22	04205-10618	PIN	4	SN:4501--
23	04050-11610	PIN,COTTER	4	SN:4501--
24	20T-43-11320	JOINT,BALL	2	SN:4501--
25	01643-01032	WASHER	2	SN:4501--
26	20T-43-11330	END,ROD	2	SN:4501--

PC10-2 S/N 4501-UP
VALVE CONTROL LEVER (BOOMARMBUCKET AND SWING)

Item	Part No.	Description	Qty	Options
27	01010-31030	BOLT	2	SN:4501--
28	01580-01008	NUT	4	SN:4501--
29	01602-01030	WASHER,SPRING	2	SN:4501--.
	20N-43-00130	LEVER ASS'Y	2	SN:4501--
30	☆	· LEVER	1	SN:4501--
31	20T-43-11280	· BUSHING	2	SN:4501--
32	04213-20625	YOKE	2	SN:4501--
33	04205-10618	PIN	4	SN:4501--
34	04050-11610	PIN,COTTER	4	SN:4501--

PC10-2 S/N 4501-UP

Fig. 1663 VALVE CONTROL LEVER (Boom Swing and Blade)



Ref. 1663

Page 180260

PC10-2 S/N 4501-UP
VALVE CONTROL LEVER (BOOM SWING AND BLADE)

Item	Part No.	Description	Qty	Options
	20N-43-00200	BRACKET ASS'Y	1	SN:4501--
1	☆	· BRACKET	1	SN:4501--
2	09350-02020	· BUSHING	4	SN:4501--
3	01010-31025	BOLT	3	SN:4501--
4	01602-01030	WASHER,SPRING	3	SN:4501--
5	20N-43-22120	LEVER,BOOM SWING	1	SN:4501--
6	20R-43-11290	KNOB	1	SN:4501--
7	20N-43-22130	LEVER	1	SN:4501--
8	04010-00519	KEY	1	SN:4501--
9	20N-43-22220	LEVER,BLADE	1	SN:4501--
10	20R-43-11280	KNOB	1	SN:4501--
11	20N-43-22230	LEVER	1	SN:4501--
12	04010-00519	KEY	1	SN:4501--
13	01010-30830	BOLT	2	SN:4501--
14	01602-00825	WASHER,SPRING	2	SN:4501--
15	06122-02004	SEAL	2	SN:4501--
16	20N-43-22141	ROD	1	SN:4611--
	20N-43-22140	ROD	1	SN:4501--4610
17	20N-43-22241	ROD	1	SN:4611--
	20N-43-22240	ROD	1	SN:4501--4610
18	04250-40847	END,ROD	2	SN:4501--
18A	04250-60847	END,ROD	2	SN:4611--
	04250-40847	END,ROD	2	SN:4501--4610
19	01580-00806	NUT	2	SN:4501--
19A	01580-10805	NUT	2	SN:4611--
	01580-00806	NUT	2	SN:4501--4610
20	01010-30830	BOLT	4	SN:4501--

Ref. 1663

Page 180260

PC10-2 S/N 4501-UP
VALVE CONTROL LEVER (BOOM SWING AND BLADE)

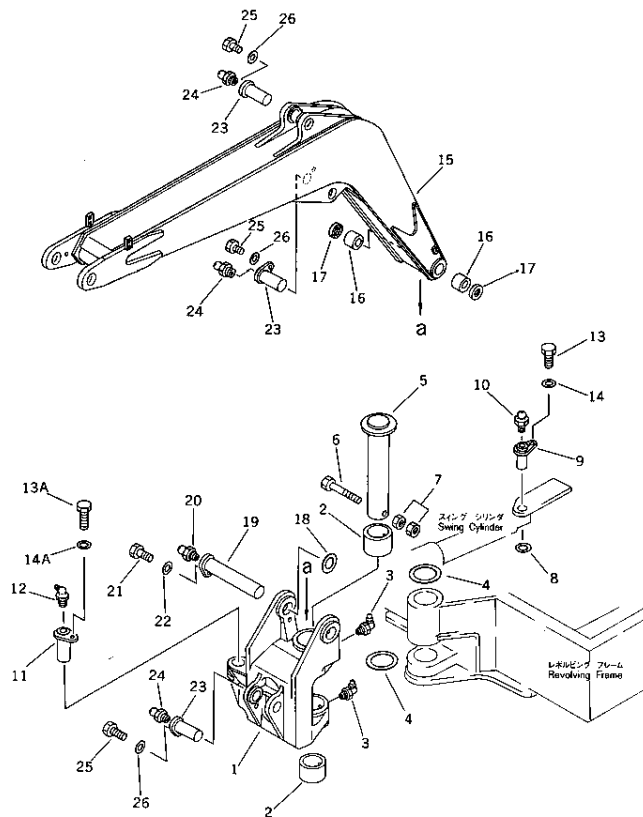
Item	Part No.	Description	Qty	Options
21	01602-00825	WASHER,SPRING	4	SN:4501--
22	01580-00806	NUT	4	SN:4501--
	20N-43-00240	LEVER ASS'Y	1	SN:4501--
23	☆	· LEVER	1	SN:4501--
24	09350-02020	· BUSHING	2	SN:4501--
	20N-43-00340	LEVER ASS'Y	1	SN:4501--
25	☆	· LEVER	1	SN:4501--
26	09350-02015	· BUSHING	2	SN:4501--
27	20N-43-22320	SHAFT	1	SN:4501--
28	01010-30820	BOLT	1	SN:4501--
29	01602-00825	WASHER,SPRING	1	SN:4501--
30	04213-20625	YOKE	2	SN:4501--
31	04205-10618	PIN	4	SN:4501--
32	04050-11610	PIN,COTTER	4	SN:4501--
33	20N-43-22310	BRACKET	1	SN:4501--
34	01010-31025	BOLT	2	SN:4501--
35	01602-01030	WASHER,SPRING	2	SN:4501--

**PC10-2 S/N 4501-UP
WORK EQUIPMENT**

Item	Description	Qty	Page
10	BOOM AND SWING BRACKET	1	210010
20	ARM	1	210020
30	BUCKET AND LINK	1	210030
40	BLADE	1	210040

PC10-2 S/N 4501-UP

Fig. 1701 BOOM AND SWING BRACKET



Ref. 1701

Page 210010

PC10-2 S/N 4501-UP BOOM AND SWING BRACKET

Item	Part No.	Description	Qty	Options
	20N-70-00030	SWING BRACKET ASS'Y	1	SN:4501--
1	☆	· BRACKET	1	SN:4501--
2	07144-10606	· BUSHING	2	SN:4501--
3	07020-00900	FITTING,GREASE	2	SN:4501--
4	20N-70-14120	WASHER	2	SN:4501--
5	20N-70-11260	PIN	1	SN:4501--
6	01011-31630	BOLT	1	SN:4501--
7	01580-01613	NUT	2	SN:4501--
8	01640-23045	WASHER	1	SN:4501--
9	20N-70-11270	PIN	1	SN:4501--
10	07020-00000	FITTING,GREASE	1	SN:4501--
11	20R-70-14140	PIN	1	SN:4501--
12	07020-00675	FITTING,GREASE	1	SN:4501--
13	01010-31025	BOLT	1	SN:4501--
13A	01010-31225	BOLT	1	SN:4501--
14	01643-31032	WASHER	1	SN:4501--
14A	01643-31232	WASHER	1	SN:4501--
	20N-70-00101	BOOM ASS'Y	1	SN:4501--
15	☆	· BOOM	1	SN:4501--
16	07143-10304	· BUSHING	2	SN:4501--
17	07145-00035	SEAL,DUST	2	SN:4501--
18	20R-70-11270	SPACER≒ 1.0MM		SN:4501--
19	20N-70-11210	PIN	1	SN:4501--
20	07020-00000	FITTING,GREASE	1	SN:4501--
21	01010-31225	BOLT	1	SN:4501--
22	01643-31232	WASHER	1	SN:4501--
23	20N-70-11230	PIN	3	SN:4501--

Ref. 1701

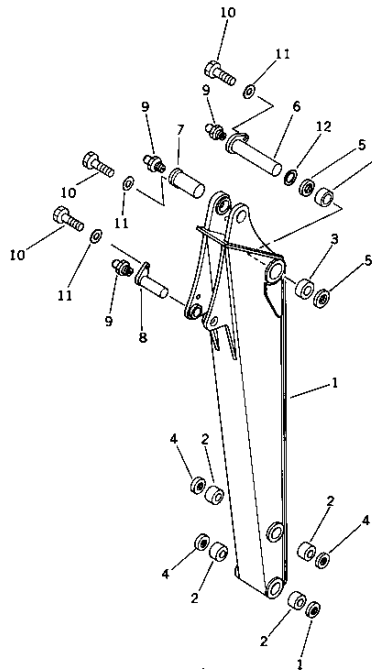
Page 210010

**PC10-2 S/N 4501-UP
BOOM AND SWING BRACKET**

Item	Part No.	Description	Qty	Options
24	07020-00000	FITTING,GREASE	3	SN:4501--
25	01010-31225	BOLT	3	SN:4501--
26	01643-31232	WASHER	3	SN:4501--

PC10-2 S/N 4501-UP

Fig. 1702 ARM



Ref. 1702

Page 210020

PC10-2 S/N 4501-UP
ARM

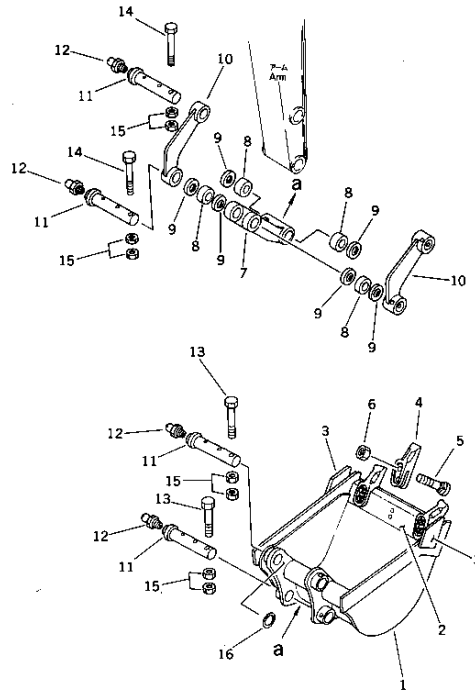
Item	Part No.	Description	Qty	Options
	20N-70-00200	ARM ASS'Y	1	SN:4501--
1	☆	· ARM	1	SN:4501--
2	07143-10303	· BUSHING	4	SN:4501--
3	07143-10304	· BUSHING	2	SN:4501--
4	07145-00030	SEAL,DUST	4	SN:4501--
5	07145-00035	SEAL,DUST	2	SN:4501--
6	20N-70-11220	PIN	1	SN:4501--
7	20N-70-11230	PIN	1	SN:4501--
8	20N-70-11240	PIN	1	SN:4501--
9	07020-00000	FITTING,GREASE	3	SN:4501--
10	01010-31225	BOLT	3	SN:4501--
11	01643-31232	WASHER	3	SN:4501--
12	20R-70-11270	SPACER \square 1.0MM		SN:4501--

Ref. 1702

Page 210020

PC10-2 S/N 4501-UP

Fig. 1703 BUCKET AND LINK



Ref. 1703

Page 210030

PC10-2 S/N 4501-UP
BUCKET AND LINK

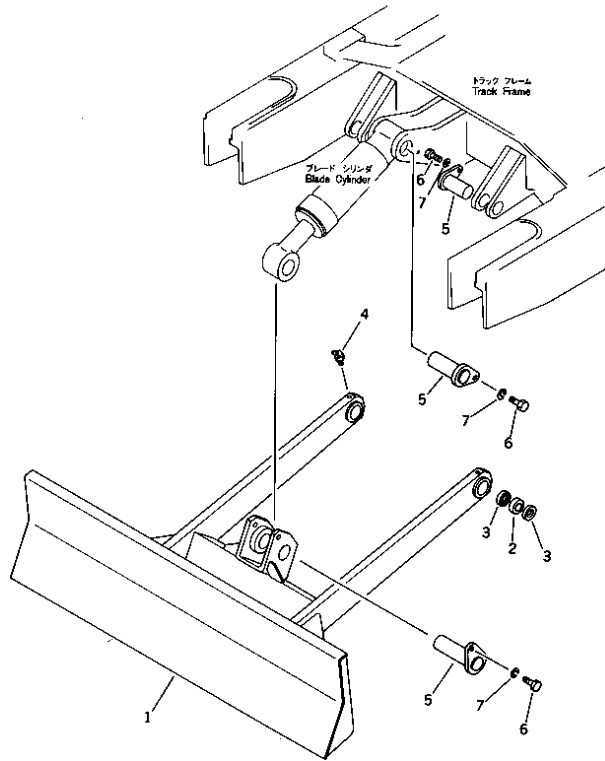
Item	Part No.	Description	Qty	Options
	20N-70-13200	BUCKET ASS'Y	1	SN:4501--
1	20N-70-13210	· BUCKET	1	SN:4501--
2	20N-70-13220	· · EDGE (WELDED)	1	SN:4501--
3	20R-70-13120	· · CUTTER (WELDED)	2	SN:4501--
4	10E-70-22211	· TOOTH	3	SN:4501--
5	02090-11055	· BOLT	6	SN:4501--
6	10E-70-22220	· NUT	6	SN:4501--
	20N-70-00300	LINK ASS'Y	1	SN:4501--
7	20N-70-12160	· LINK	1	SN:4501--
8	07143-10303	· BUSHING	4	SN:4501--
9	07145-00030	SEAL,DUST	6	SN:4501--
10	20N-70-12140	LINK,L.H.	1	SN:4501--
	20N-70-12150	LINK,R.H.	1	SN:4501--
11	20N-70-11250	PIN	4	SN:4501--
12	07020-00000	FITTING,GREASE	4	SN:4501--
13	01010-31075	BOLT	2	SN:4501--
14	01010-31070	BOLT	2	SN:4501--
15	01580-01008	NUT	8	SN:4501--
16	20N-70-11280	SPACER ϕ 1.0MM		SN:4501--

Ref. 1703

Page 210030

PC10-2 S/N 4501-UP

ブレード
Fig. 1705 BLADE



Ref. 1705

Page 210040

PC10-2 S/N 4501-UP
BLADE

Item	Part No.	Description	Qty	Options
1	20N-71-00200	BLADE ASS'Y	1	SN:4501--
1	☆	・ BLADE	1	SN:4501--
2	07144-10304	・ BUSHING	2	SN:4501--
3	07145-00035	SEAL,DUST	4	SN:4501--
4	07020-00675	FITTING,GREASE	2	SN:4501--
5	20N-71-21120	PIN	4	SN:4501--
6	01010-31025	BOLT	4	SN:4501--
7	01643-01032	WASHER	4	SN:4501--

Ref. 1705

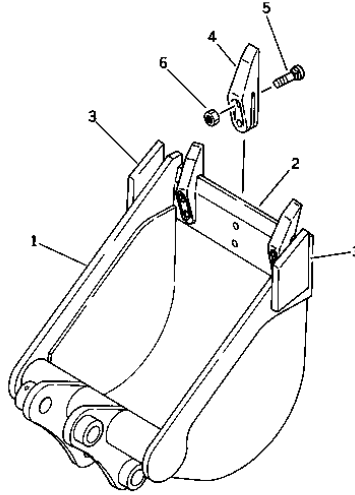
Page 210040

PC10-2 S/N 4501-UP
OPTIONAL PARTS

Item	Description	Qty	Page
10	TRENCHING BUCKET 0.06M3 350MM	1	240010
20	TRENCHING BUCKET 0.04M3 250MM	1	240020

PC10-2 S/N 4501-UP

Fig. 1871 狭幅バケツ TRENCHING BUCKET 0.06m³, 350mm Width



Ref. 1871

Page 240010

PC10-2 S/N 4501-UP
TRENCHING BUCKET 0.06M3 350MM

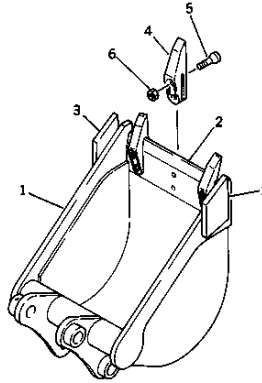
Item	Part No.	Description	Qty	Options
	20N-926-1200	BUCKET ASS'Y	1	SN:4501--
1	20N-926-1210	· BUCKET	1	SN:4501--
2	20R-926-1220	· · LIP (WELDED)	1	SN:4501--
3	20R-70-13120	· · CUTTER (WELDED)	1	SN:4501--
4	10E-70-22211	· TOOTH	3	SN:4501--
5	02090-11055	· BOLT	6	SN:4501--
6	10E-70-22220	· NUT	6	SN:4501--

Ref. 1871

Page 240010

PC10-2 S/N 4501-UP

Fig. 1872 TRENCHING BUCKET 0.04m³, 250mm Width



Ref. 1872

Page 240020

**PC10-2 S/N 4501-UP
TRENCHING BUCKET 0.04M³ 250MM**

Item	Part No.	Description	Qty	Options
	20N-926-1100	BUCKET ASS'Y	1	SN:4501--
1	20N-926-1130	· BUCKET	1	SN:4501--
2	20R-926-1120	· · LIP (WELDED)	1	SN:4501--
3	20R-70-13120	· · CUTTER (WELDED)	1	SN:4501--
4	10E-70-22211	· TOOTH	3	SN:4501--
5	02090-11055	· BOLT	6	SN:4501--
6	10E-70-22220	· NUT	6	SN:4501--

Ref. 1872

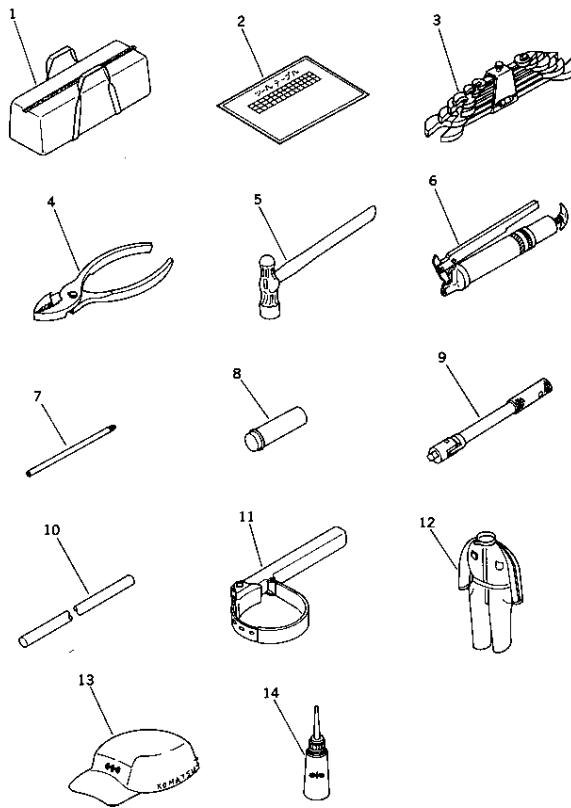
Page 240020

PC10-2 S/N 4501-UP
TOOL AND KIT

Item	Description	Qty	Page
10	TOOL	1	270010

PC10-2 S/N 4501-UP

Fig. 1901 ツール TOOL



Ref. 1901

Page 270010

PC10-2 S/N 4501-UP
TOOL

Item	Part No.	Description	Qty	Options
1	09056-03612	BAG,TOOL	1	SN:4501--
2	201-98-21270	TABLE,TOOL	1	SN:4501--
3	09000-30006	WRENCH SET	1	SN:4501--
4	09036-00150	PLIERS	1	SN:4501--
5	09039-00150	HAMMER	1	SN:4501--
	07952-00001	GREASE PUMP ASS'Y	1	SN:4501--
6	07950-10200	· PUMP	1	SN:4501--
7	07951-21022	· NOZZLE	1	SN:4501--
8	07950-90200	CARTRIDGE	1	SN:4501--
9	09023-00300	HANDLE	1	SN:4501--
10	09027-00300	BAR,EXTENSION	1	SN:4501--
11	09019-08035	WRENCH,FILTER	1	SN:4501--
12	09980-20450	OVERALL	1	SN:4501--
13	09982-20057	CAP	1	SN:4501--
14	09040-00800	OILER	1	SN:4501--

Ref. 1901

Page 270010