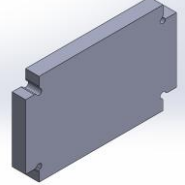
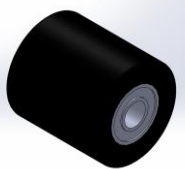

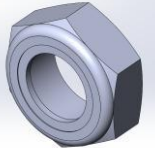
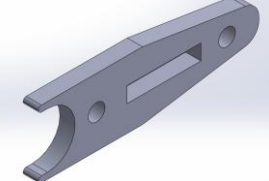


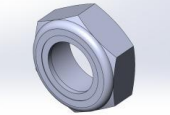
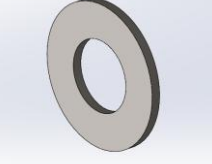
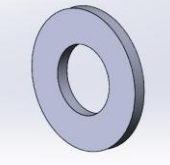



SMALL WHEEL ATTACHMENT (SWA) ASSEMBLY INSTRUCTIONS



ITEM	DESCRIPTION	QTY	IMAGE
1	SWA BRACE 2X72	1	
2	2" RUBBER COATED WHEEL	1	
3	1/2" BOLT 2.75" LG	1	
4	1/2" THIN LOCK NUT	1	
5	SWA SIDE PLATE 2X72	1	
6	SWA - BASE 2X72	1	

ITEM	DESCRIPTION	QTY	IMAGE
7	5/16" X 4.00" LG SCREW	2	
8	5/16" THIN LOCK NUT	2	
9	1/2" FLAT SAE WASHER	2	
10	5/16" FLAT WASHER	2	
11	5/16" FENDER WASHER	2	

IF YOU HAVE ANY ISSUES WITH ASSEMBLY OR MISSING PARTS PLEASE CONTACT US IMMEDIATELY

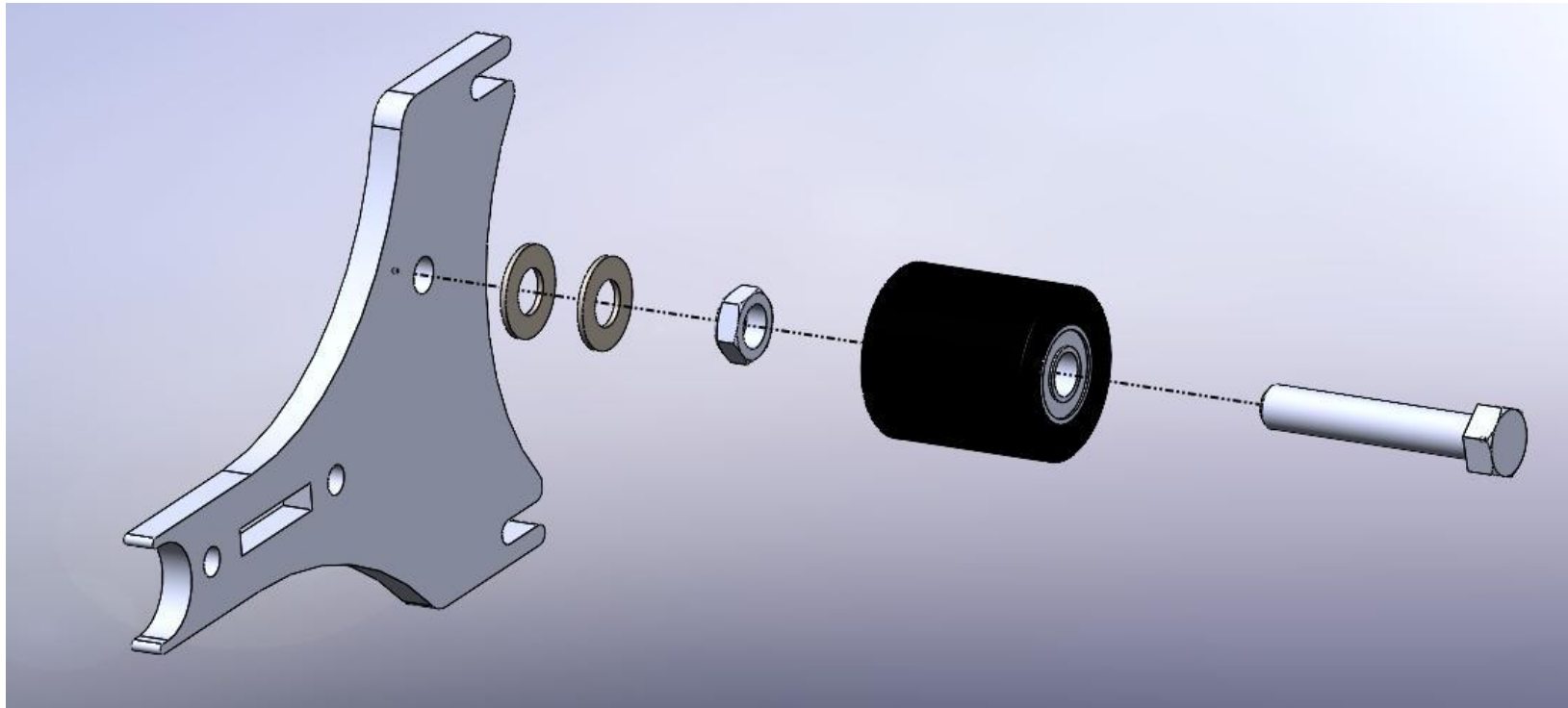
Ben Secrist 513-532-7062, Ben@brodbeckironworks.com

SMALL WHEEL ATTACHMENT (SWA) ASSEMBLY INSTRUCTIONS

TOOL LIST

- 3/4" COMBO WRENCH
- 3/4" SOCKET AND WRENCH
- 1/2" COMBO WRENCH OR SOCKET
- 3/16 ALLEN WRENCH

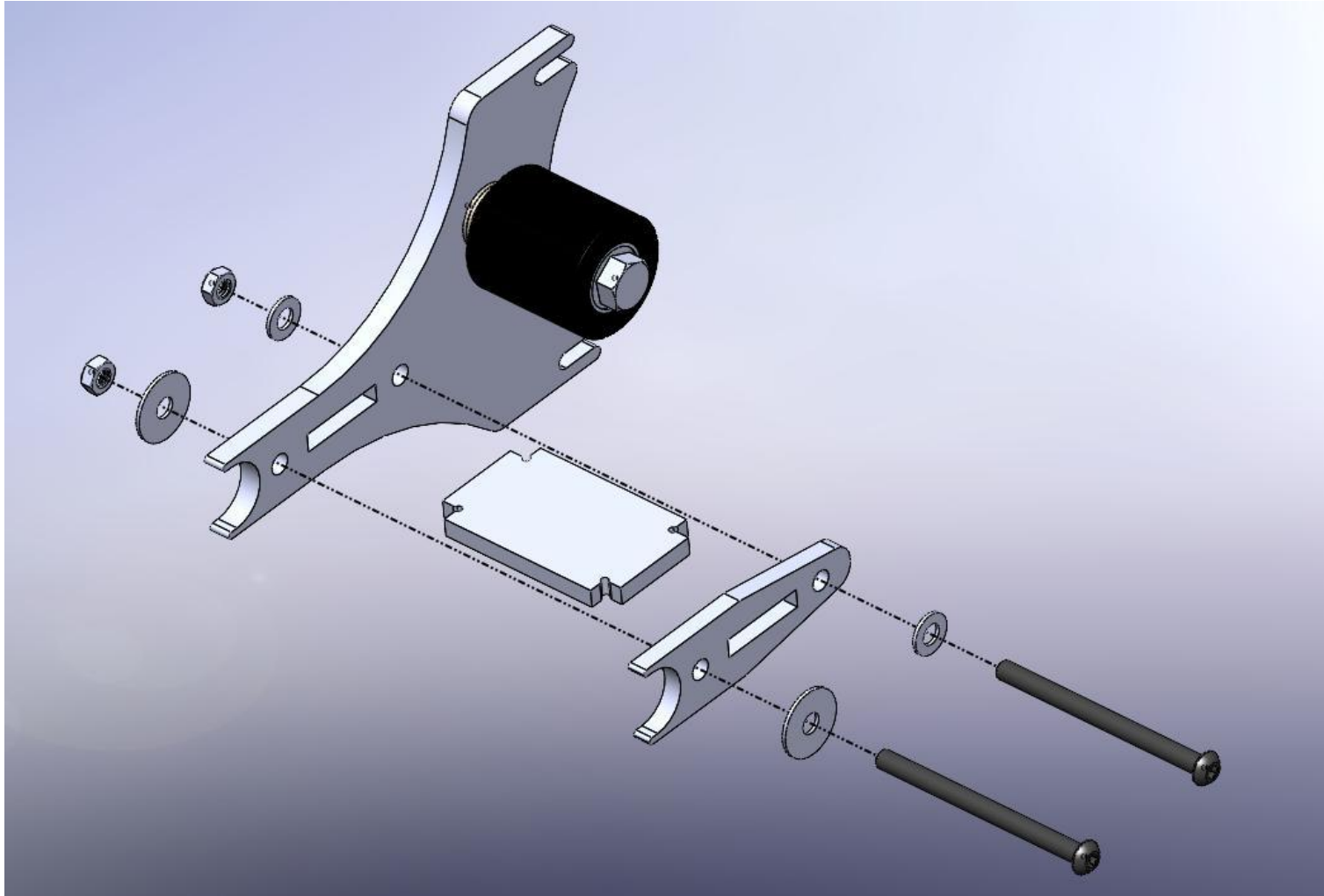
Small Wheel Attachment Assembly



Install the Rubber Wheel (item 2) into the Small Wheel Base (Item 6) using 1/2" X 2-3/4" Hex Bolt(item 3), Nylock Nuts (item 4) and SAE Flat washers(item 9).

BE CAREFUL NOT TO OVERTIGHTEN BEARINGS. THE WHEEL SHOULD SPIN FREELY BUT THERE SHALL NOT BE EXTRA SPACE BETWEEN THE BEARINGS AND NUT OR BOLT HEAD.

SMALL WHEEL ATTACHMENT (SWA) ASSEMBLY INSTRUCTIONS



Install the brace (item 1) and side plate (item 5) using the long 5/16" screws (item 7), washers (item 10 & 11), and nuts (item 8). Be sure to install the fender washers (item 11) on the front 5/16 bolt to keep wheels from moving side to side. Be sure to snug and not overtighten these bolts. This can potentially cause tracking issues.

Note: The parts may need a little filing to fit. They are designed to fit tightly.