



SLACK BELT ATTACHMENT ASSEMBLY INSTRUCTIONS

BRODBECK IRONWORKS LLC

REVISION B

Contact Brodbeck Ironworks LLC for any questions or concerns before operating this equipment

IF YOU HAVE ANY ISSUES WITH ASSEMBLY OR MISSING PARTS PLEASE CONTACT US IMMEDIATELY

Ben Secrist 513-532-7062, Ben@brodbeckironworks.com

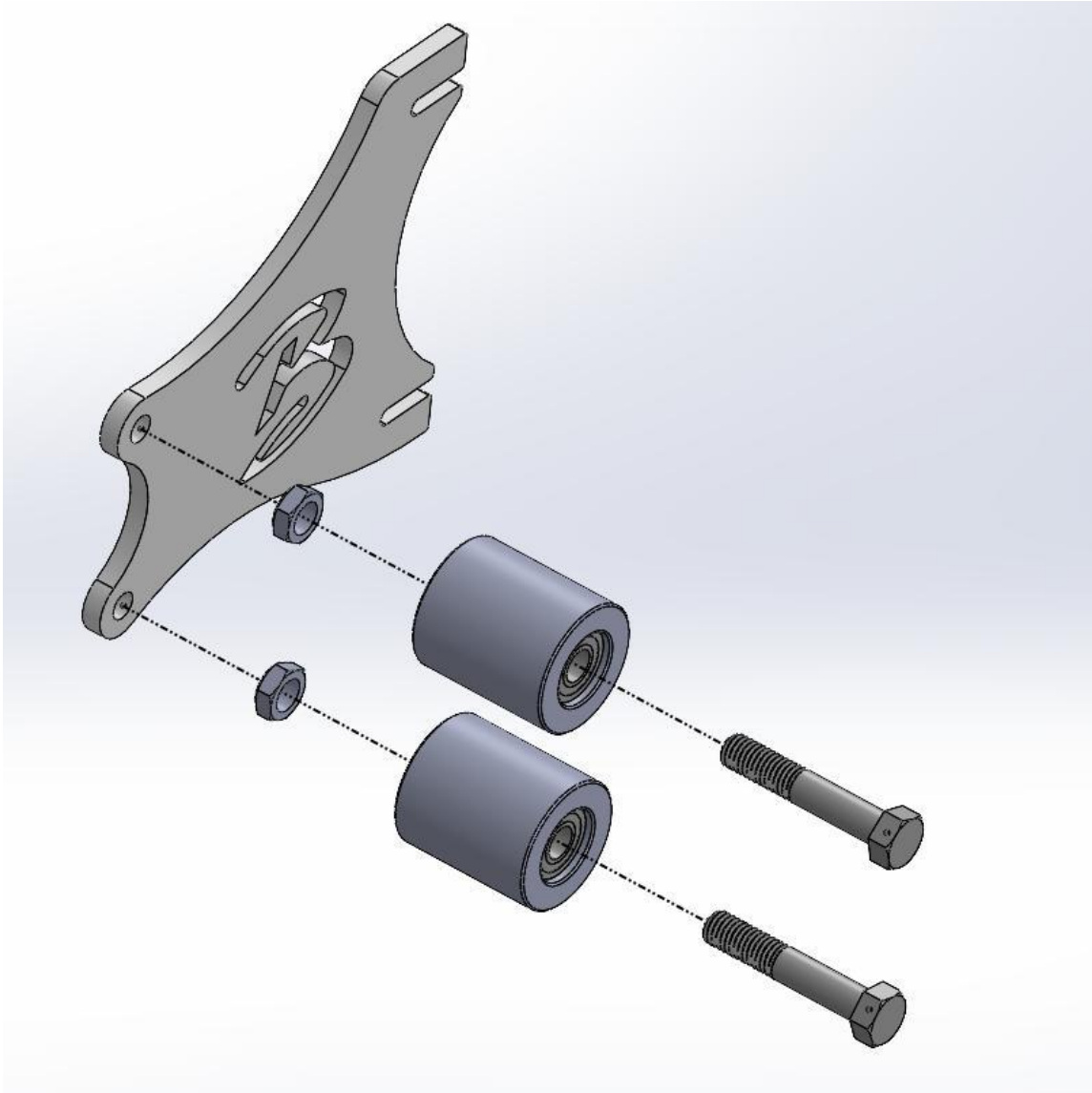
Parts List:

ITEM	DESCRIPTION	QTY	IMAGE
1	SLACK ATTACHMENT	1	
4	1/2" THIN NYLOCK NUT	2	
10	1/2" HEX BOLT 2.75" LONG	2	
13	2" ALUMINUM WHEEL	2	

TOOL LIST

- 3/4" COMBO WRENCH OR SOCKET
- ADJUSTABLE WRENCH

SLACK ATTACHMENT ASSEMBLY



Install the 2" idler wheels into the slack grinding bracket using $\frac{1}{2}$ -13 x 2-3/4" hex bolt, and nylock nuts.

Be careful not to overtighten bearings. The wheel should spin freely but there shall not be extra space between the bearings and nut or bolt head.