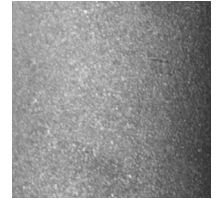


75h Pendant Rust GP2003



Available colors



Rust



Zinc

| | North America | Europe |
|--------------------------|---|---|
| LED | 14W LED, 110-277V, 0-10V dimming | 14.4W LED, 230V, Triac dimmable |
| Color temperature | 2700K | 2700K |
| Lumen output | ~1250lm | 560lm |
| Material | Naturally rusted steel | Naturally rusted steel |
| Size | Ø 2.375, L 29.5 (in) | Ø 6, L 75 (cm) |
| Weight | 8lbs | 3,6kg |
| Country of origin | The Netherlands | The Netherlands |
| Certification |  |  |

Dry locations only. After the natural oxidation process, all items are treated to stop further rusting.

Designed in The Netherlands.

Custom cords and canopies are available. Contact our offices for more information.

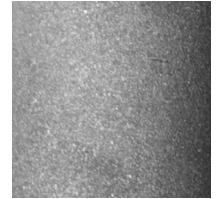


150h Pendant Rust GP2004



Available colors



Rust



Zinc

| | North America | Europe |
|--------------------------|---|---|
| LED | 30W LED, 110-277V, 0-10V dimming | 14.4W LED, 230V, Triac dimmable |
| Color temperature | 2700K | 2700K |
| Lumen output | ~3000lm | 1120lm |
| Material | Naturally rusted steel | Naturally rusted steel |
| Size | Ø 2.375, L 59 (in) | Ø 16, L 150 (cm) |
| Weight | 15lbs | 6,8kg |
| Country of origin | The Netherlands | The Netherlands |
| Certification |  |  |

Dry locations only. After the natural oxidation process, all items are treated to stop further rusting.

Designed in The Netherlands.

Custom cords and canopies are available. Contact our offices for more information.