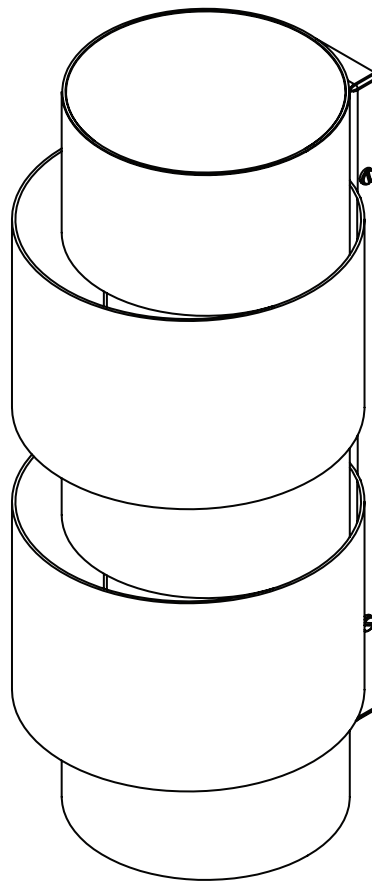


Ring Wall

Installation Instructions



! Please handle with care and wear gloves at all times during assembly and installation to avoid damaging components.

COMPONENTS

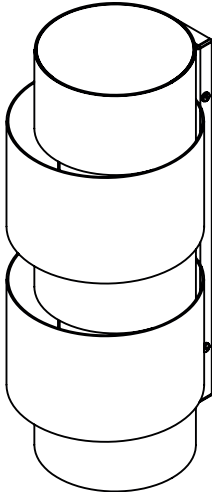
A. Ring wall light & wall mounting plate.

Additional Parts for US installation only:

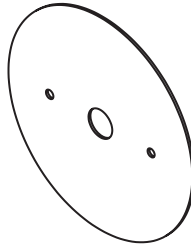
B. Covering Plate

C. US Adapter plate

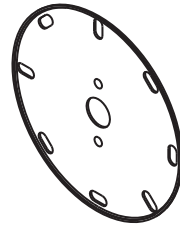
A



B



C

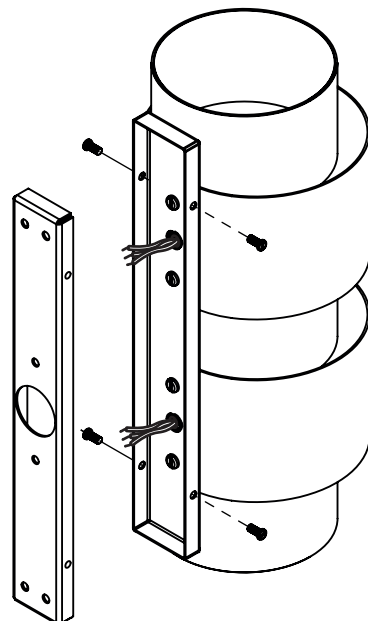


BEFORE INSTALLATION

- Installation **must** be carried out by a qualified electrician.
- Check that the wall is strong enough to support the weight of the fitting.

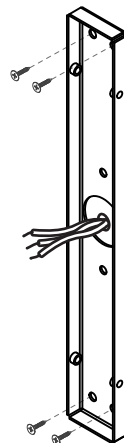
INSTALLATION

1. Remove the wall plate from the fitting by removing the four screws located on the sides of the back plate.

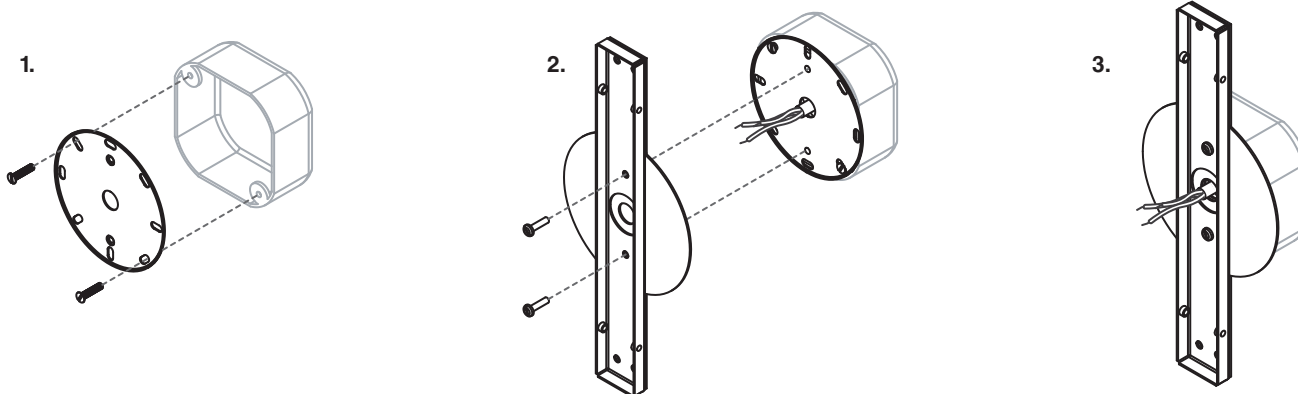


- 2.** Attach the wall plate to the wall using 4 x screws suitable for the surface you are mounting to (not supplied), ensuring that the electric cable is centred with the hole in the middle of the wall plate.

Note: **For US installation** please see below drawings. Attach US adapter plate to junction box ensuring that the three central holes are vertically positioned (1). Attach the wall and covering plate to the Adapter plate using the 2 screws provided (2) to securely attach the wall plate to the junction box (3).

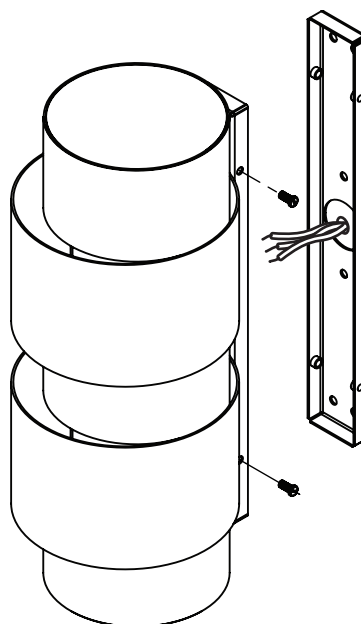


For US installation only



- 3.** Raise the fitting towards the mounted wall plate and make the electrical connection.

Place the connected wall light over the mounted wall plate and secure with the four screws located on the sides of the fitting.



TECHNICAL

bulb holder	2 x G9 mains halogen
wattage	2 x 25 watts
weight	4kg (9lbs)
cleaning	dust using a dry lint-free cloth weekly or as required
replacement/ repair	please contact CTO Lighting
warranty	CTO Lighting warranty, 1 year from date of delivery
certification	CE compliant
