

m o o o i[®]



Power Nap

by Marcel Wanders A classy and stylish promotor of comfortable lounging for it encourages the possibility, however unexpected, of enjoying a quick nap to freshen up. Less space-consuming than a sofa bed and more versatile than a regular sofa, Power Nap can be lifted and reclined, becoming the perfect solution for all occasions.

Designer	Marcel Wanders
Year of design	2010
Material	Steel frame powdercoated or chrome, wooden sleds, foam and fabric



upholstery categories

Maccedil Sottile	Jacquard
Maccedil Grezzo	Twill
Oray	Summit Uni
Manga	Velour
Softlinen	
Bouclé	
Cervino	
Arredo	
Faux	

Macchedil, Sottile

composition

49% vi, 24% pl, 21% li, 6% co

abrasion

30.000 martindale

lightfastness 4

firetest

FR BS5852 0/1

EN1021 I&2



Macchedil Sottile
Black indigo



Macchedil Sottile
Pinkish



Macchedil Sottile
Off white



Macchedil Sottile
Light grey



Macchedil Sottile
Light brown



Macchedil Sottile
Grey grey



Macchedil Sottile
Anthracite



Macchedil Sottile
Blue grey



Macchedil Sottile
Cappucino



Macchedil Sottile
Deep blue

Macchedil, Grezzo

composition

47% co, 20% vi, 18% pi, 8% li, 5% pc, 2% af

abrasion

18.000 martindale

lightfastness 4

firetest

FR BS5852 0/1

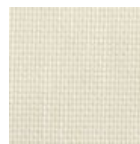
EN1021 1&2



Macchedil Grezzo
Black indigo



Macchedil Grezzo
Pinkish



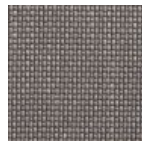
Macchedil Grezzo
Offwhite



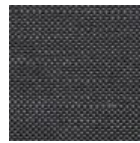
Macchedil Grezzo
Light grey



Macchedil Grezzo
Light brown



Macchedil Grezzo
Grey grey



Macchedil Grezzo
Anthracite



Macchedil Grezzo
Blue grey



Macchedil Grezzo
Cappuchino



Macchedil Grezzo
Deepblue

Oray

composition

8% co, 38% vi, 15% pl, 39% li

abrasion

25.000 martindale

lightfastness 4

firetest

FR BS5852 0/1

EN1021 I&2



Oray
Cream



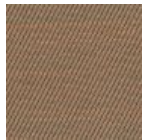
Oray
Sand



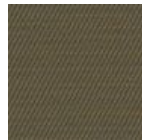
Oray
Rock



Oray
Mineral



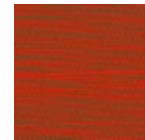
Oray
Gravel



Oray
Dark Gull



Oray
Copper



Oray
Rust



Oray
Flamboyant



Oray
Oil



Oray
Aqua



Oray
Peyote



Oray
Ocean



Oray
Metal



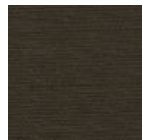
Oray
Griffin



Oray
Dusk



Oray
Chestnut



Oray
Dark



Oray
Indigo



Oray
Ochre

Manga

composition

29% pl, 71% co

abrasion

40.000 martindale

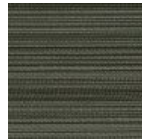
lightfastness 5**firetest**

FR BS5852 0/1

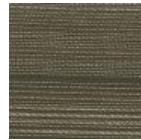
EN1021 I&2



Manga
Grey



Manga
Blue



Manga
Green



Manga
Brown

Softlinen

composition

100% Linen

abrasion

25.000 martindale

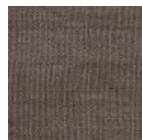
lightfastness 6**firetest**

FR BS5852 0/1

EN1021 I&2



Softlinen
Beige



Softlinen
Brown

Bouclé

composition

43% co, 28% pan, 14% pa, 12% vi, 3% pl

abrasion

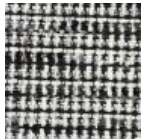
20.000> martindale

lightfastness 4

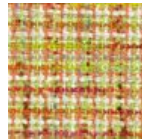
firetest

FR BS5852 0/1

EN1021 I&2



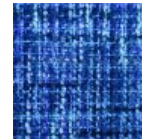
Bouclé
Black white



Bouclé
Rainbow



Bouclé
Brown



Bouclé
Blue

Jacquard andaz

composition:

34% cotton - 30% viscose - 24% linen - 12% polyamide

abrasion:

25000 martindale

firetest:

BS 5852 : Part I : 1979

BS EN 1021 I&2



Jacquard
Andaz

Jacquard Old Black & Blue

composition

52% vi, 38% co, 10% li

abrasion

20.000> martindale

firetest

FR BS5852 0/1

EN1021 I&2



Jacquard
Old Blue



Jacquard
Old Black

Jaquard Fresco

composition

40% vi ,36% co,14% pl, 10% li

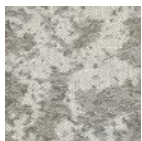
abrasion

20.000> martindale

firetest

FR BS5852 0/1

EN1021 I&2



Jaquard
Fresco

Twill

composition

72% wo, 8% pa, 20% pl

abrasion

75.000 martindale

lightfastness 5

firetest

FR BS5852 0/1
EN1021 I&2



Twill
Caviar



Twill
Graphite



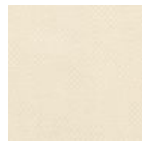
Twill
Grass



Twill
Light grey



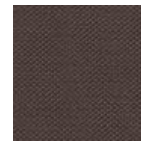
Twill
Linen



Twill
Natural



Twill
Passion



Twill
Walnut

Summit UNI

composition

22% wo, 2% pa, 14% pl, 62% pl filling

abrasion

50.000 martindale

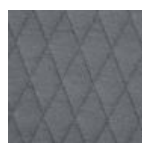
lightfastness 5

firetest

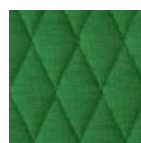
FR BS5852 0/1
EN1021 I&2



Summit UNI
Caviar



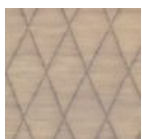
Summit UNI
Graphite



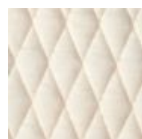
Summit UNI
Grass



Summit UNI
Grey



Summit UNI
Linen



Summit UNI
Natural



Summit UNI
Passion



Summit UNI
Walnut

m o o o i[®]

Velour

composition

77% wo, 8% pa, 15% pl

abrasion

100.000 martindale

lightfastness 7

firetest

FR BS5852 0/1

EN1021 1&2



Velour
Coral



Velour
Stone



Velour
Moss

Cervino Leather

composition

100% aniline leather

firetest

FR BS5852 0/1

EN1021 I&2



Cervino Leather
Anthracite



Cervino Leather
Cognac



Cervino Leather
Mud



Cervino Leather
Pure

Arredo Leather

composition

100% semi aniline leather

firetest

FR BS5852 0/1

EN1021 I&2



Arredo Leather
Black



Arredo Leather
Brown



Arredo Leather
White

Faux

composition

100% pl

abrasion

50.000 martindale

lightfastness 4

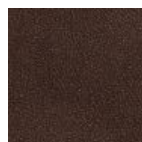
firetest

FR BS5852 0/1

EN1021 I&2



Faux
Black



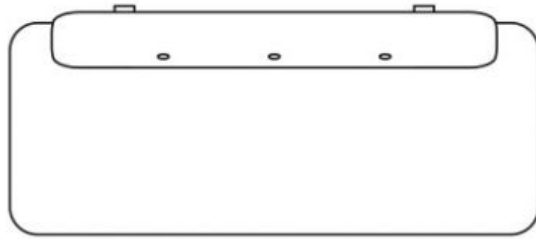
Faux
Brown

m o o o i[®]

m o o o i[®]

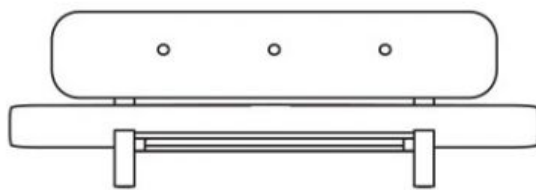
dimensions

86cm | 33,9"



63cm | 24,8"

66cm | 26"



200cm | 78,7"

31cm | 12,2"

