

# Pooof

MOOOI WORKS



The Pooof is your perfect companion at home. Timeless, versatile, solid and soft. At first sight, the sturdiness of the firmly grounded Pooof would not let you imagine how flexible it really is. The easy-going design and height and two available sizes make the Pooof the perfect buddy for almost every sofa in the Moooi collection.

---

## *Detailing*



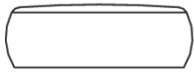
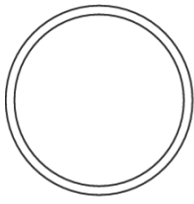
Pooof comes with the aesthetics and tactility of different removable fabrics, leathers, and covers you can choose for its upholstery.

---

## *Pooof 120*

### Dimensions

Ø120cm | 47.2"



40cm | 15.8"

### Product

**WIDTH** 120cm | 47.2"  
**HEIGHT** 40cm | 15.7"  
**DEPTH** 120cm | 47.2"  
**DIAMETER** 120cm | 47.2"

### Packaging

**WIDTH** 125cm | 49.2"  
**HEIGHT** 44cm | 17.3"  
**CUBAGE** 0.69m<sup>3</sup> | 24.28ft<sup>3</sup>  
**LENGTH** 125cm | 49.2"  
**WEIGHT** 11.5cm | 25.35lbs

### Technical

#### MATERIAL

Wooden frame, multiple density cut foam, dacron, upholstered in basic white fabric, removable cover with velcro bottom covering.

**SEAT HEIGHT**  
40cm | 15.7"

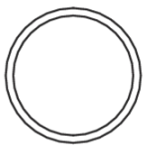
**SEAT WIDTH**  
120cm | 47.2"

**SEATING CAPACITY**  
1

## Pooof 70

### Dimensions

Ø70cm | 27.6"



40cm | 15.8"

### Product

**WIDTH** 70cm | 27.6"  
**HEIGHT** 40cm | 15.7"  
**DEPTH** 70cm | 27.6"  
**DIAMETER** 70cm | 27.6"

### Packaging

**WIDTH** 74cm | 29.1"  
**HEIGHT** 44cm | 17.3"  
**CUBAGE** 0.24m<sup>3</sup> | 8.51ft<sup>3</sup>  
**LENGTH** 74cm | 29.1"  
**WEIGHT** 11.5cm | 25.35lbs

### Technical

#### MATERIAL

Wooden frame, multiple density cut foam, dacron, upholstered in basic white fabric, removable cover with velcro bottom covering.

**SEAT HEIGHT**

40cm | 15.7"

**SEAT WIDTH**

70cm | 27.6"

**SEATING CAPACITY**

1

---

## *Upholstery*

### *ABBRACCI (available in 5 colours)*

**COMPOSITION**

100% PES

**ABRASION**30000 martindale  
lightfastness 3 - 4  
pilling 5**FIRETEST**BS5852 part 1 on request  
TB117-2013

---

### *ALFRESCO (available in 5 colours)*

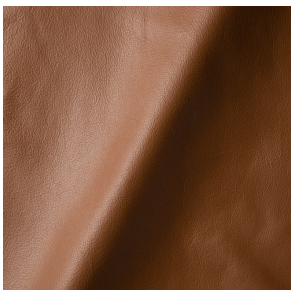
**COMPOSITION**

100% PES

**ABRASION**30000 martindale  
lightfastness 3 - 4  
pilling 5**FIRETEST**BS5852 part 1 on request  
TB117-2013

---

### *ARREDO (available in 2 colours)*



*BOUCLE (available in 4 colours)*



**COMPOSITION**

43% CO, 14% PA, 12% CV,  
3% PES, 28% PAN

**ABRASION**

20000 martindale  
lightfastness 4 - 6  
pilling 4 - 5

**FIRETEST**

BS5852 part 1 on request

---

*CANVAS 2 (available in 45 colours)*



**COMPOSITION**

90% WO, 10% PA

**ABRASION**

100000 martindale  
lightfastness 6  
pilling 4

**FIRETEST**

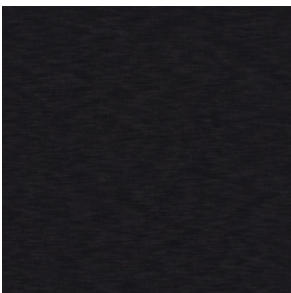
BS5852 part 1 on request  
TB117-2013

---

*CERVINO (available in 5 colours)*



*DENIM (available in 3 colours)*



**COMPOSITION**

100% CO

**ABRASION**

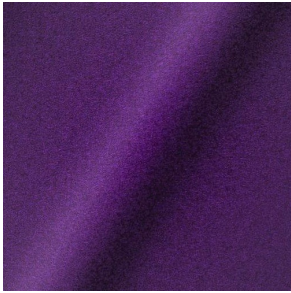
70000 martindale  
lightfastness 4  
pilling 3 - 4

**FIRETEST**

BS5852 part 1 on request  
TB117-2013

---

*DIVINA 3 (available in 56 colours)*



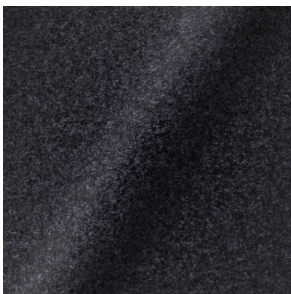
**COMPOSITION**  
100% WO

**ABRASION**  
45000 martindale  
lightfastness 7  
pilling 3

**FIRETEST**  
BS5852 part 1 on request  
TB117-2013

---

*DIVINA MD (available in 27 colours)*



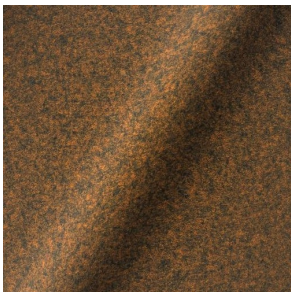
**COMPOSITION**  
100% WO

**ABRASION**  
45000 martindale  
lightfastness 6  
pilling 3

**FIRETEST**  
BS5852 part 1 on request  
TB117-2013

---

*DIVINA MELANGE 3 (available in 60 colours)*



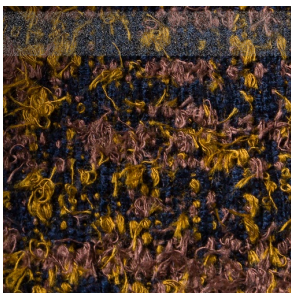
**COMPOSITION**  
100% WO

**ABRASION**  
45000 martindale  
lightfastness 6 - 7  
pilling 3

**FIRETEST**  
BS5852 part 1 on request  
TB117-2013

---

*Bearded Leopard (available in 1 colours)*



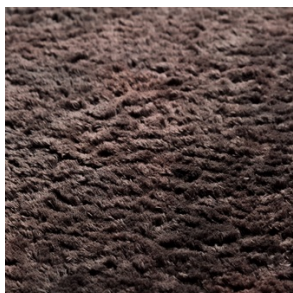
**COMPOSITION**  
77% CV, 15% PES, 7% CO,  
1% PA

**ABRASION**  
15000 martindale  
lightfastness 4 - 6  
pilling 4

**FIRETEST**  
BS5852 part 1 on request  
TB117-2013

---

*Bison (available in 1 colours)*



---

*Armoured Boar, Cracked (available in 1 colours)*



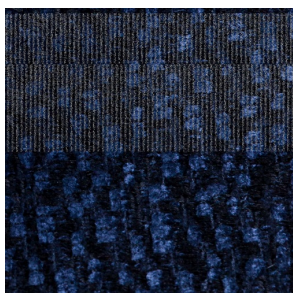
---

*Armoured Boar, Hairy (available in 1 colours)*



---

*Armoured Boar (available in 1 colours)*



**COMPOSITION**

64% CV, 21% PES, 15%  
CO

**ABRASION**

50000 martindale  
lightfastness 4 - 6  
pilling 5

**FIRETEST**

BS5852 part 1 on request  
TB117-2013

*Dodo Pavone (available in 1 colours)*



**COMPOSITION**  
12% CO, 88% PES

**ABRASION**  
40000 martindale  
lightfastness 5  
pilling 4 - 5

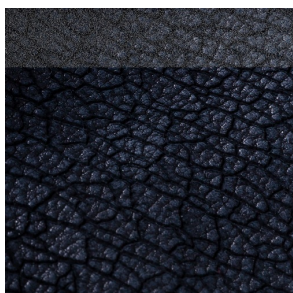
**FIRETEST**  
BS5852 part 1 on request  
TB117-2013

---

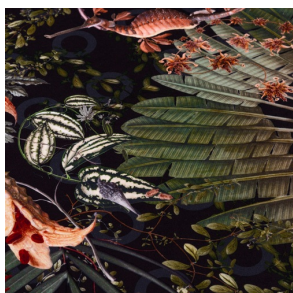
*Dwarf Rhino Buffed (available in 1 colours)*



*Dwarf Rhino, Crackle (available in 1 colours)*



*Menagerie of Extinct Animals (available in 1 colours)*



**COMPOSITION**  
100% PES

**ABRASION**  
50000 martindale  
lightfastness 4 - 6  
pilling 5

**FIRETEST**  
BS5852 part 1 on request  
TB117-2013

---

*Blushing Sloth Melange Mohair (available in 1 colours)*



**COMPOSITION**

85% WV, 15% WM

**ABRASION**

15000 martindale  
lightfastness 4 - 6  
pilling 2 - 3

**FIRETEST**

BS5852 part 1 on request  
TB117-2013

---

*Blushing Sloth Woolly Mohair (available in 1 colours)*



**COMPOSITION**

24% PES, 15% PA, 8% CO,  
24% WM, 29% WV

**ABRASION**

40000 martindale  
lightfastness 4 - 6  
pilling 3 - 4

**FIRETEST**

BS5852 part 1 on request  
TB117-2013

---

*FIORD (available in 27 colours)*

**COMPOSITION**

92% WV, 8% PA

**ABRASION**

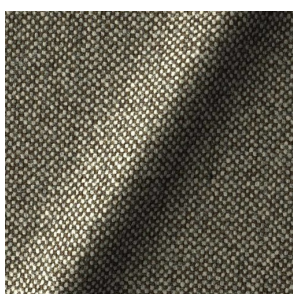
60000 martindale  
lightfastness 6  
pilling 4 - 5

**FIRETEST**

BS5852 part 1 on request  
TB117-2013

---

*HALLINGDAL 65 (available in 58 colours)*



**COMPOSITION**

30% CV, 70% WV

**ABRASION**

100000 martindale  
lightfastness 7  
pilling 3 - 4

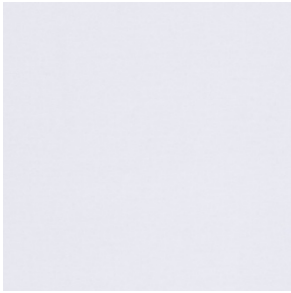
**FIRETEST**

BS5852 part 1

---



*HARALD 3 (available in 30 colours)*



**COMPOSITION**  
100% CO

**ABRASION**  
100000 martindale  
lightfastness 5  
pilling 4 - 5

---

*JACQUARD, ANDAZ (available in 2 colours)*



**COMPOSITION**  
34% CO, 30% CV, 24%  
LI, 12% PA

**ABRASION**  
25000 martindale  
lightfastness 4 - 6  
pilling 4 - 5

**FIRETEST**  
BS5852 part 1 on request  
TB117-2013

---

*JACQUARD, FRESC (available in 2 colours)*



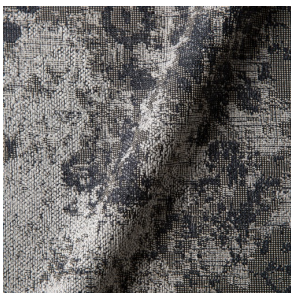
**COMPOSITION**  
52% CV, 38% CO, 10% LI

**ABRASION**  
15000 martindale  
lightfastness 3 - 4  
pilling 2 - 3

**FIRETEST**  
BS5852 part 1 on request  
TB117-2013

---

*JACQUARD, OLD (available in 4 colours)*



**COMPOSITION**  
52% CV, 38% CO, 10% LI

**ABRASION**  
15000 martindale  
lightfastness 3 - 4  
pilling 2 - 3

**FIRETEST**  
BS5852 part 1 on request  
TB117-2013

*JUSTO (available in 10 colours)*



**COMPOSITION**

15% CO, 35% PC, 10% PA,  
40% CV

**ABRASION**

50000 martindale  
lightfastness 5  
pilling 4

**FIRETEST**

BS5852 part 1 on request  
TB117-2013

---

*LISCIO (available in 11 colours)*

**COMPOSITION**

35% WO, 35% CV, 21%  
CO, 9% PA

**ABRASION**

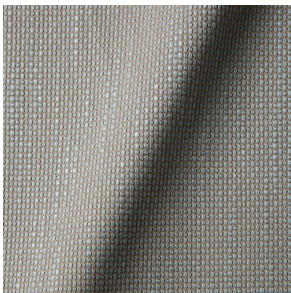
30000 martindale  
lightfastness 4 - 6  
pilling 4

**FIRETEST**

BS5852 part 1 on request  
TB117-2013

---

*MACCHEDIL GREZZO (available in 11 colours)*



**COMPOSITION**

47% CO, 20% CV, 18%  
PA, 8% LI, 5% PC

**ABRASION**

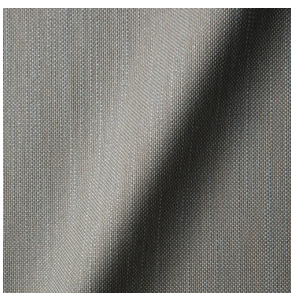
15000 martindale  
lightfastness 3 - 5  
pilling 4 - 5

**FIRETEST**

BS5852 part 1 on request

---

*MACCHEDIL SOTTILE (available in 11 colours)*



**COMPOSITION**

49% CV, 24% PES, 21% LI,  
6% CO

**ABRASION**

20000 martindale  
lightfastness 3 - 5  
pilling 2 - 3

**FIRETEST**

BS5852 part 1 on request

---

*MANGA* (available in 5 colours)



**COMPOSITION**

29% PES, 71% CO

**ABRASION**

40000 martindale  
lightfastness 4 - 5

---

*MERIT* (available in 43 colours)

**COMPOSITION**

24% PES, 76%

**ABRASION**

85000 martindale  
lightfastness 7  
pilling 4

---

*MOSAIC 2* (available in 15 colours)

**COMPOSITION**

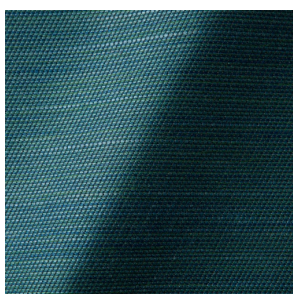
58% PES, 27% WV, 9% PA,  
6% EA

**ABRASION**

100000 martindale  
lightfastness 6 - 7  
pilling 4 - 5

---

*ORAY RAY* (available in 16 colours)



**COMPOSITION**

39% LI, 38% CV, 15% PE,  
8% CO

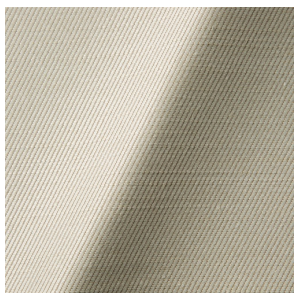
**ABRASION**

30000 martindale  
pilling 4 - 5

**FIRETEST**

BS5852 part 1 on request  
TB117-2013

*ORAY RONAN (available in 6 colours)*



**COMPOSITION**

39% LI, 38% CV, 15% PE,  
8% CO

**ABRASION**

30000 martindale  
pilling 4 - 5

**FIRETEST**

BS5852 part 1 on request  
TB117-2013

---

*PLUSH (available in 2 colours)*



**COMPOSITION**

90% WV, 10% PA

**ABRASION**

100000 martindale  
lightfastness 5  
pilling 4

**FIRETEST**

TB117-2013

---

*REMIX 2 (available in 49 colours)*



**COMPOSITION**

100% LI

**ABRASION**

25000 martindale  
lightfastness 4 - 6  
pilling 3 - 4

**FIRETEST**

BS5852 part 1  
TB117-2013

---

*SOFTLINEN (available in 3 colours)*



**COMPOSITION**

60% WO, 30% PES, 2%  
PA, 3% PC

**ABRASION**

40000 martindale  
lightfastness 5  
pilling 3 - 4

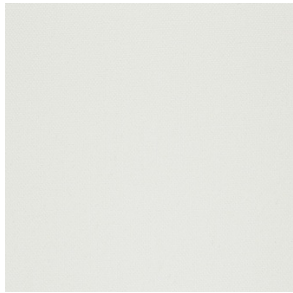
**FIRETEST**

BS5852 part 1 on request  
TB117-2013

*SOLIS (available in 9 colours)*

---

*STEELCUT 2 (available in 37 colours)*



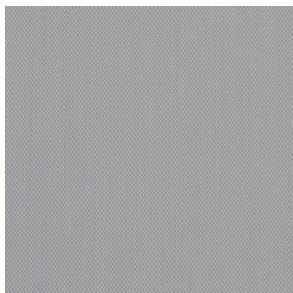
**COMPOSITION**  
90% WV, 10% PA

**ABRASION**  
100000 martindale  
lightfastness 6  
pilling 3 - 4

**FIRETEST**  
TB117-2013

---

*STEELCUT TRIO 3 (available in 54 colours)*



**COMPOSITION**  
90% WV, 10% PA

**ABRASION**  
100000 martindale  
lightfastness 5  
pilling 4

**FIRETEST**  
TB117-2013

---

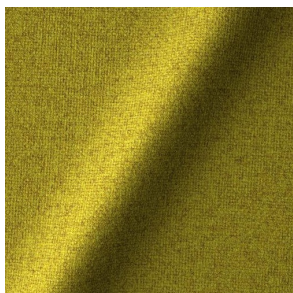
*SUMMIT MELANGE (available in 9 colours)*

---

*SUMMIT UNI (available in 9 colours)*

---

*TONICA 2 (available in 39 colours)*



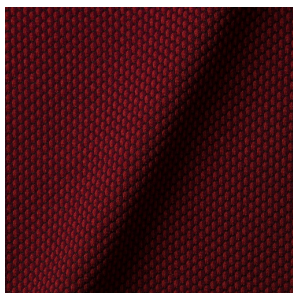
**COMPOSITION**  
100% WV

**ABRASION**  
45000 martindale  
lightfastness 6 - 7  
pilling 4 - 5

**FIRETEST**  
TB117-2013

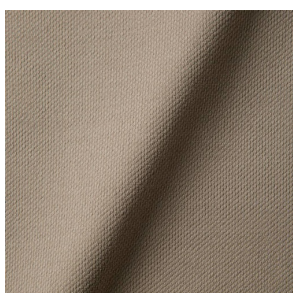
---

*TRICKLE (available in 8 colours)*



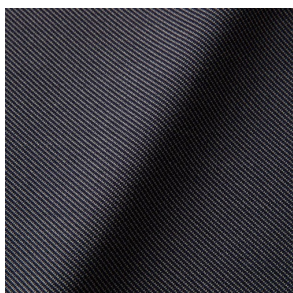
---

*TWILL (available in 9 colours)*



---

*TWILL MELANGE (available in 9 colours)*



---

*VELOUR (available in 5 colours)*

---

*VESPER (available in 8 colours)*



**COMPOSITION**

10% CO, 40% LI, 10% PA,  
10% PES, 30% CV

**ABRASION**

40000 martindale  
lightfastness 5  
pilling 4

**FIRETEST**

BS5852 part 1 on request  
TB117-2013

