

# LEDTUBE

Daniel López, 2012

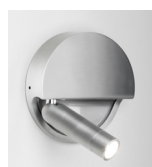
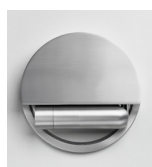
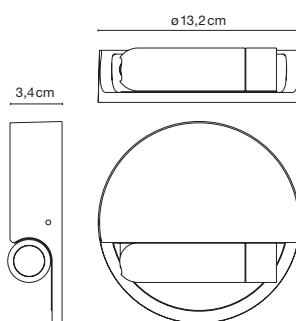


Injected aluminium structure and a frontal piece of transparent polycarbonate. Incorporated press button to switch on or off when opening or closing the wall lamp.

- Aluminium
- White
- Black

LED 3W 700mA 95lm (included)

Ledtube R



Ledtube R Left

Ledtube R Right

Range

