

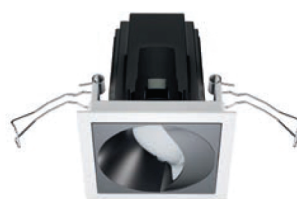
Laser Wall Washer



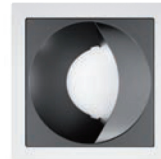
ø 38
Comfort



ø 75
Comfort



ø 75
Comfort



Explore and interact with products in 3D.
thelightexperience.iguzzini.com



- Flush-mount installation on false ceilings of thickness 12.5 to 25 mm for Minimal versions (without perimeter flap) or 1 to 25 mm for Frame versions (with flap) using steel wire springs.
- Body and heat sink in die-cast aluminium.
- Reflector in metallic-finished thermoplastic material with scratch protection.
- Specialist optical system designed to achieve effective wall washer distribution on the wall.
- Available with dimmable wiring.
- The minimum installation space dimensions are listed in the online instruction catalogue.
- IP20
- IP43 on the visible body of the mount after installation.

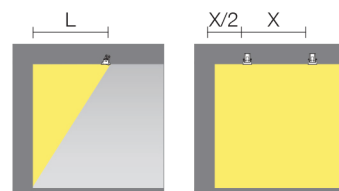
Optics

The innovative wall washer optic (patented) was designed to ensure uniform lighting of walls, from the highest to the lowest points, as well as avoiding shadow areas in zones near the ceiling.



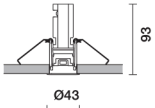
Correct installation distances to achieve uniform lighting of the walls.

L= 0.8 m
X= 1 m
X/2= 0.5 m

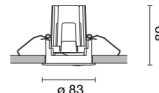




source		system			
W	lm	W	lm	optic	code colour
Frame version - ø38 - Super Comfort					
LED					
4000K - CRI 90					
10W	430	-	-	WW	QY64 01-43-47
3000K - CRI 90					
10W	430	-	-	WW	QY63 01-43-47
2700K - CRI 90					
10W	430	-	-	WW	QY62 01-43-47
Power supply to be ordered separately					



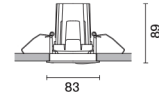
source		system			
W	lm	W	lm	optic	code colour
Frame version - ø75					
LED					
3000K - CRI 90					
10W	1200	10W	672	WW	P370 01-43-47
2700K - CRI 90					
10W	1150	10W	644	WW	P369 01-43-47
Warm Dimming - CRI 90					
10W	620	10W	366	WW	P371 01-43-47
The power supply with code MY19 must be ordered separately for Warm dimming versions. Power supply to be ordered separately.					



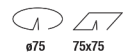
source		system			
W	lm	W	lm	optic	code colour
Minimal version - ø75					
LED					
3000K - CRI 90					
10W	1200	10W	672	WW	QA70 01-04
2700K - CRI 90					
10W	1150	10W	644	WW	QA69 01-04
Warm Dimming - CRI 90					
10W	620	10W	366	WW	QA71 01-04
The power supply with code MY19 must be ordered separately for Warm dimming versions. Power supply to be ordered separately. To install minimal products a QA82 flange is required.					



source		system			
W	lm	W	lm	optic	code colour
Frame version - 75x75					
LED					
3000K - CRI 90					
10W	1200	10W	672	WW	P392 01-43-47
2700K - CRI 90					
10W	1150	10W	644	WW	P391 01-43-47
Power supply to be ordered separately					



source		system			
W	lm	W	lm	optic	code colour
Minimal version - 75x75					
LED					
3000K - CRI 90					
10W	1200	10W	672	WW	QA79 01-04
2700K - CRI 90					
10W	1150	10W	644	WW	QA78 01-04
Power supply to be ordered separately. To install minimal products a QA83 flange is required.					



Power supply

	code	colour	code	colour
Constant current power supply unit non dimmable IP20 20W VIN = 110-240VAC 50/60Hz	MY37	00	MY37	00
	PA85	00	PA85	00
Constant current power supply unit 1-10V IP20 16W VIN = 220-240VAC 50/60Hz 075	MY18	00	MY18	00
Constant current power supply unit DALI IP20 20W VIN = 110-240VAC 50/60Hz	PA83	00	PA83	00
Constant current power supply unit IGBT + TRIAC IP20 12W VIN = 220-240VAC 50/60Hz 075	MY19	00	MY19	00
Constant current power supply unit IGBT + TRIAC IP20 12W VIN = 220-240VAC 50/60Hz 075	MY20	00	MY20	00
Emergency kit	MY21	00	MY21	00

Mounting accessories

	code	colour	code	colour
Minimal square flange	---	---	QA83	01 For recessed 75x75 mm version
Minimal circular flange	---	---	QA82	01 For recessed ø 75 mm version
Minimal circular flange	---	---	PA22	01 For recessed ø 75 mm version