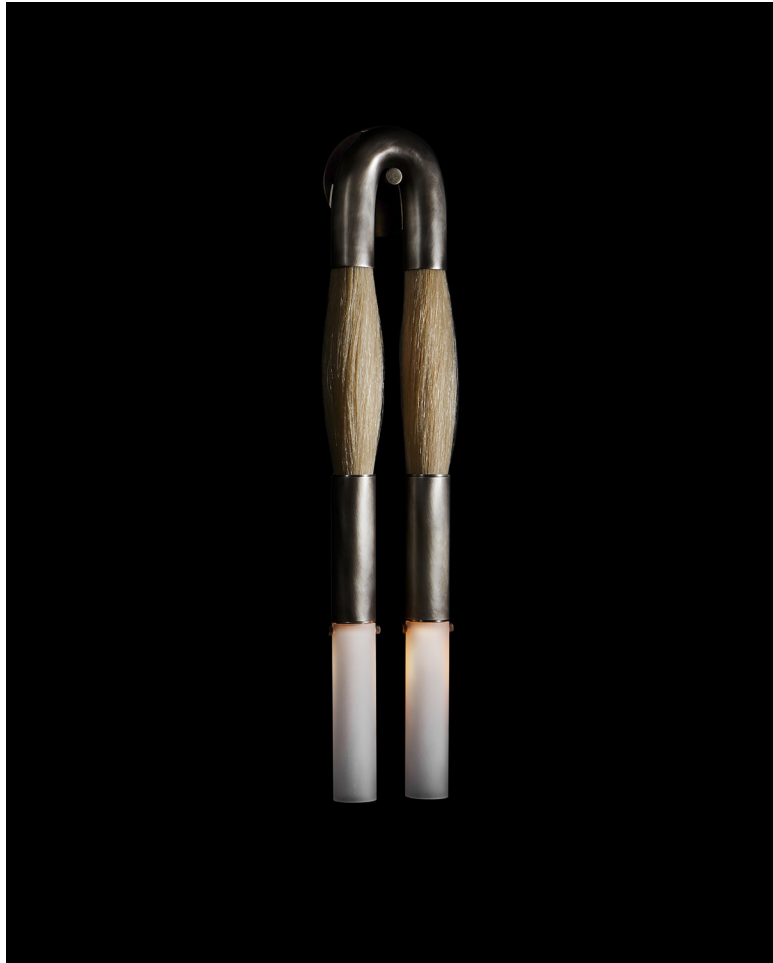


A P P A R A T U S



TARNISHED SILVER / PALOMINO HORSEHAIR

HORSEHAIR : SCONCE

REFERENCE

THE SENSUAL VERSUS THE MACHINE MADE
HORSES BY STEVEN KLEIN
RIDING TACK

COMPOSITION

WEFTS OF HORSEHAIR IMPLY STRUCTURAL FUNCTION
BRASS FORM CAST TO APPEAR DRAPED OVER A PEG

A P P A R A T U S

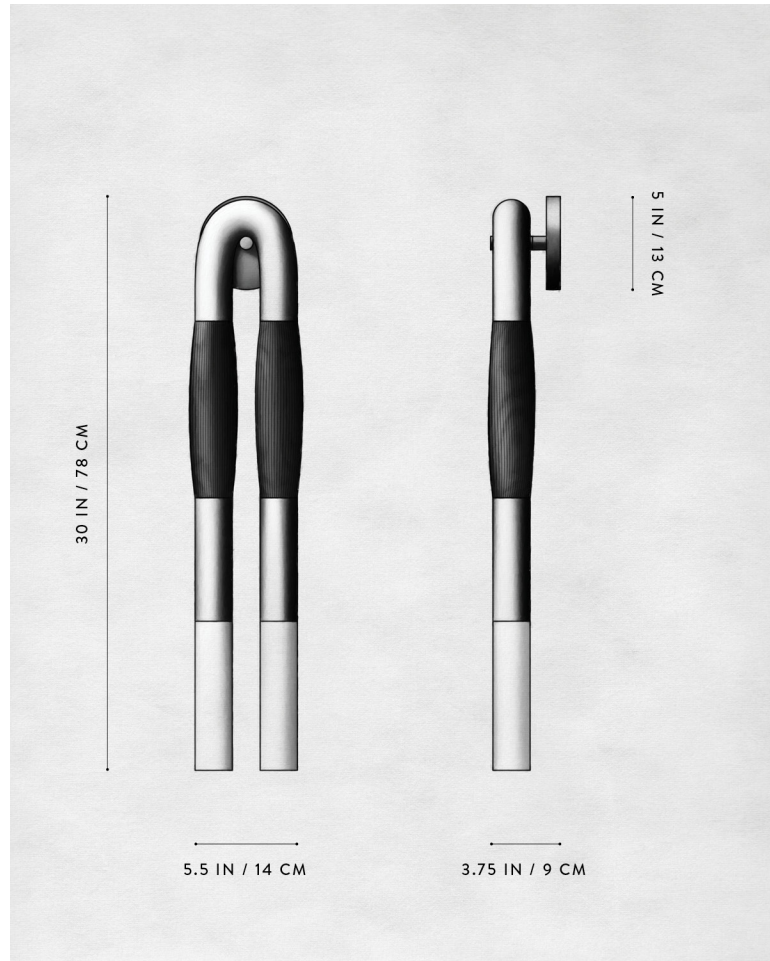


OIL-RUBBED BRONZE / FLAXEN HORSEHAIR



OIL-RUBBED BRONZE / PALOMINO HORSEHAIR

A P P A R A T U S



HORSEHAIR : SCONCE

DIMENSIONS

30 H, 5.5 W, 3.75 D IN

WEIGHT

78 H, 14 W, 9 D CM

APPROX. 10 LBS / 5 KG

VOLTAGE

120-240

UL / CE

LAMPING

MAX 25W

BULB INCLUDED

2 X 3W DIMMABLE LED BULB

200 LUMENS EACH

2500K

120V : E12 TUBE SM : CLEAR

240V : E14 TUBE SM : CLEAR

BULB LIFE

30,000 HOURS

FINISHED AND ASSEMBLED BY HAND IN
NY DOMESTIC AND IMPORTED COMPONENTS

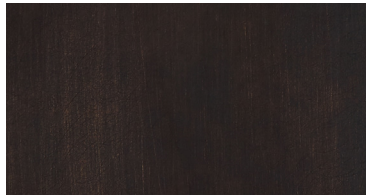
A P P A R A T U S



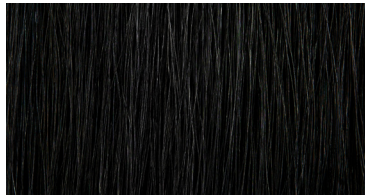
AGED BRASS



HORSEHAIR - PALOMINO



OIL-RUBBED BRONZE



HORSEHAIR - JET BLACK



BLACKENED BRASS



HORSEHAIR - FLAXEN



TARNISHED SILVER

METAL

HORSEHAIR

HORSEHAIR : SCONCE

AGED BRASS [WAXED]
OIL-RUBBED BRONZE [WAXED]
BLACKENED BRASS [WAXED]
TARNISHED SILVER [LACQUERED] ADD 35%

PALOMINO
JET BLACK
FLAXEN