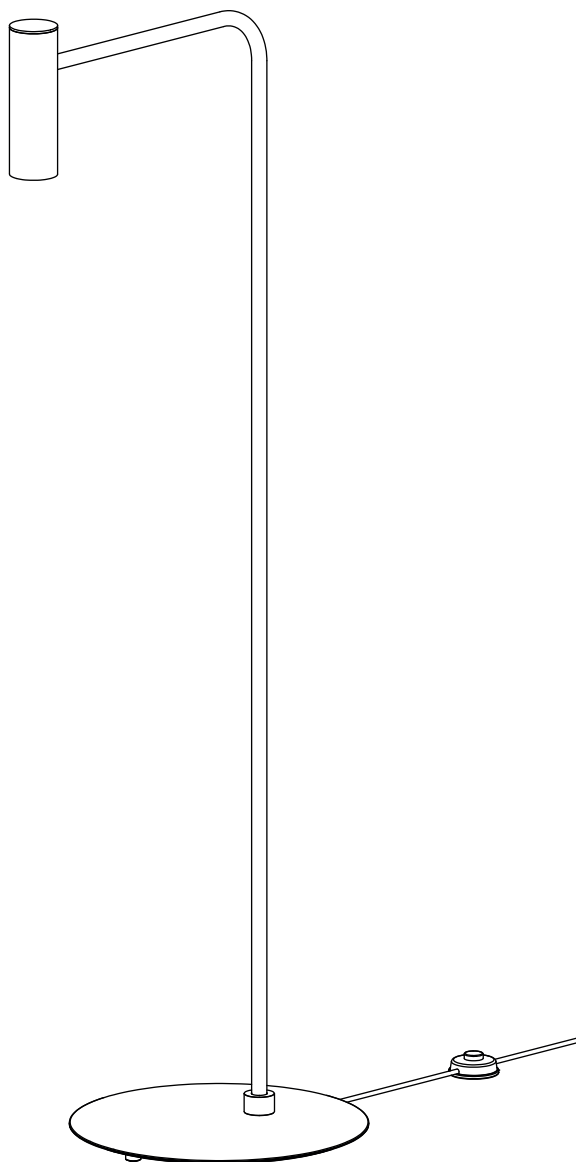


HERON FLOOR

INSTALLATION INSTRUCTIONS



Please handle with care and wear gloves at all times during installation to avoid damaging or marking components.

BEFORE INSTALLATION

- A minimum of **two** people are required to assemble this floor light.
- Always wear soft cotton gloves when assembling the floor light.
- Carefully unwrap the product and handle with care during assembly.

TECHNICAL

finish	satin brass with satin brass base CTO-05-010-0001
	satin brass with honed black marquina marble base CTO-05-010-0101
lamp holder	240v - 1 x LED GU10 - 5w max 120v - 1 x LED GU10 - 5w max (no bulbs supplied)
weight	brass base - 9kg (20lbs) marble base - 13kg (28.5lbs)
cleaning	satin brass metalwork use a soft dry cloth to clean. If any marks remain clean the area using a damp soft cloth and dry afterwards with a soft cloth
replacement/ repairs	please contact CTO Lighting
warranty	CTO Lighting warranty, 1 year from date of delivery
certification	CE

COMPONENTS

A - 1 x Heron Stem

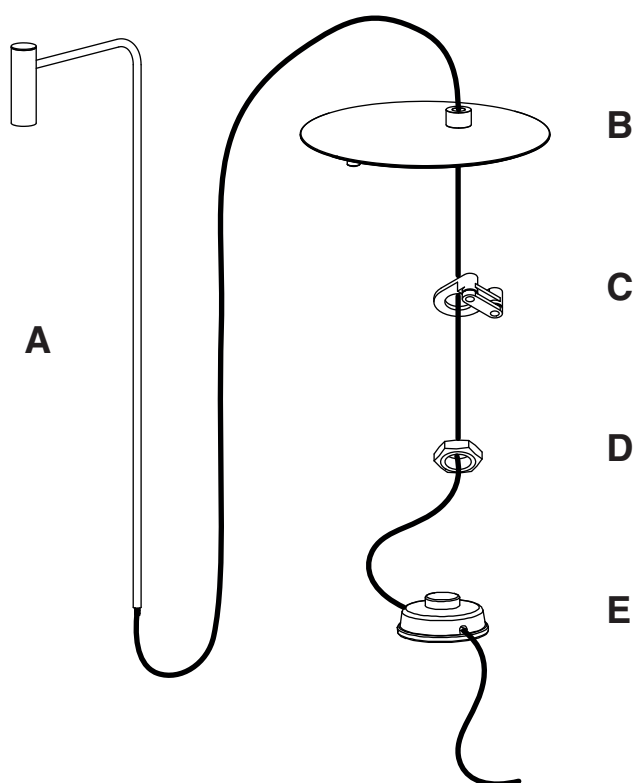
B - 1 x Heron Base

C - 1 x Cable clamp & screws

D - 1 x Hex nut

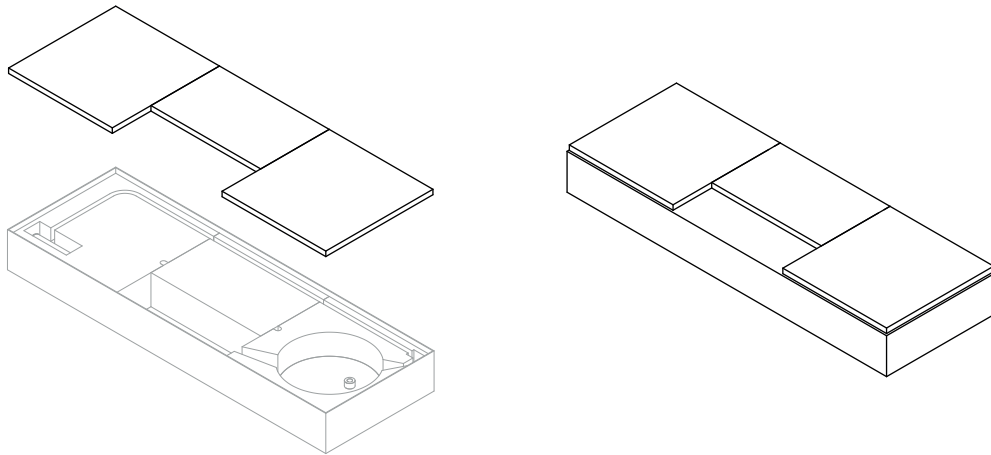
E - In-line switch and cord set

F - Bulb removal tool



UNBOXING AND ASSEMBLY

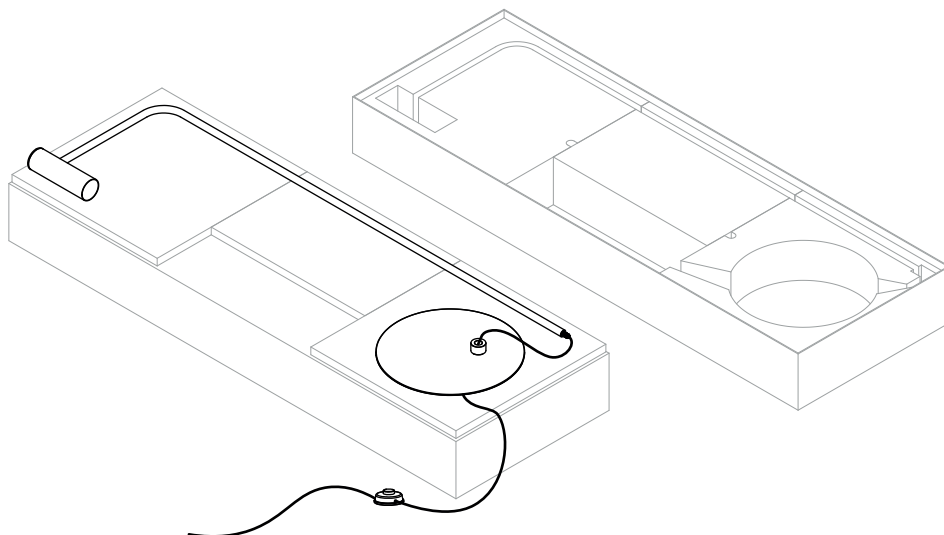
1. Remove the top layer of polystyrene packaging and place them on top of the lid creating a soft resting surface.



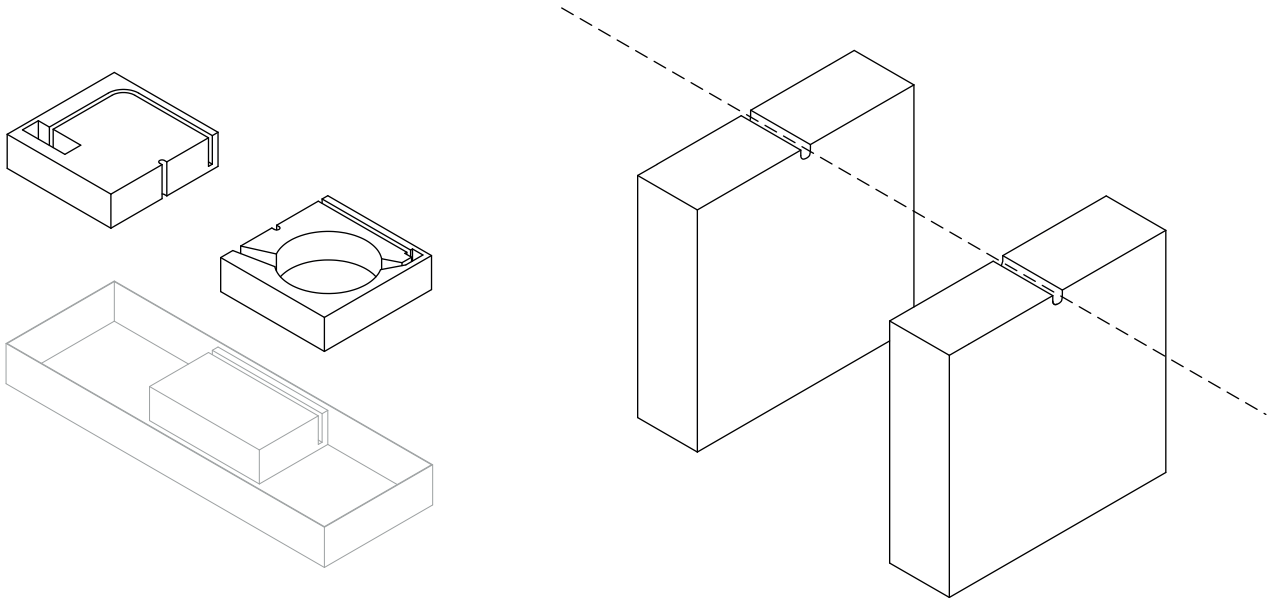
2. Carefully remove the Heron Stem and Base from the box and place on top of the box lid.

Please note:

Do not remove any of the protective nylon sleeves from the light until the assembly is complete.

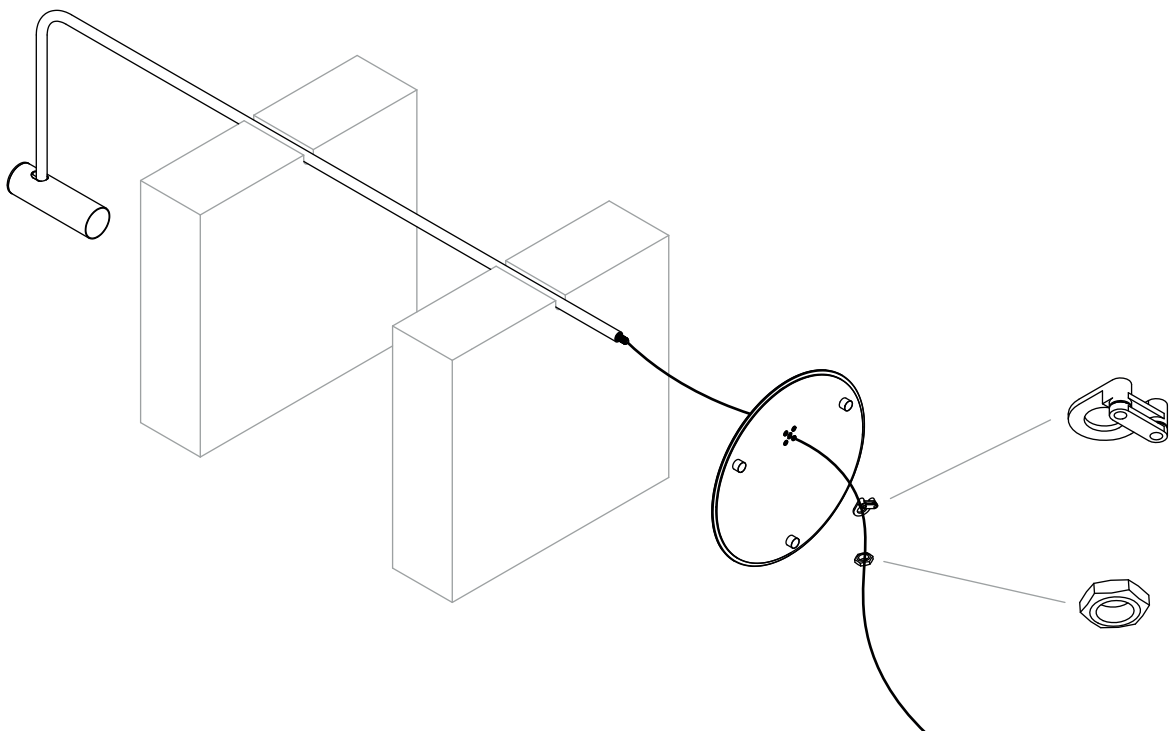


- 3.** Remove the two large polystyrene sections from the box and place them upright, with the grooves in line with each other, creating a platform for the Heron stem.



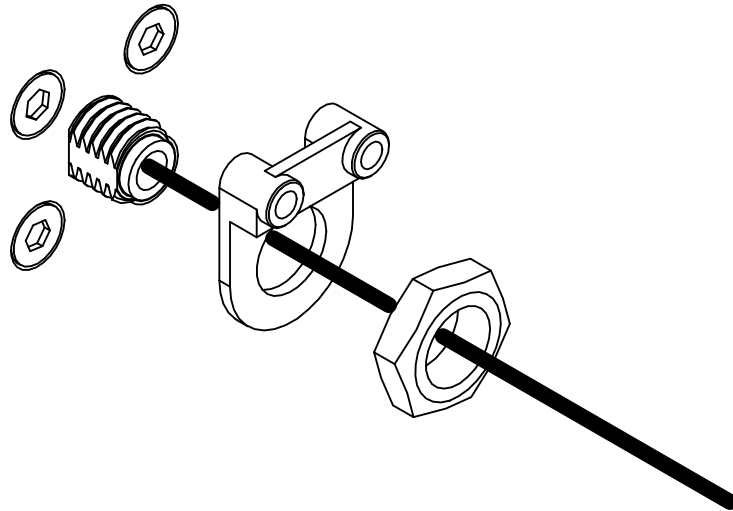
- 4.** **Note: Support the Heron Stem and Base at all times during assembly.**

Place the Heron stem on the polystyrene sections and lift the Heron Base into place.

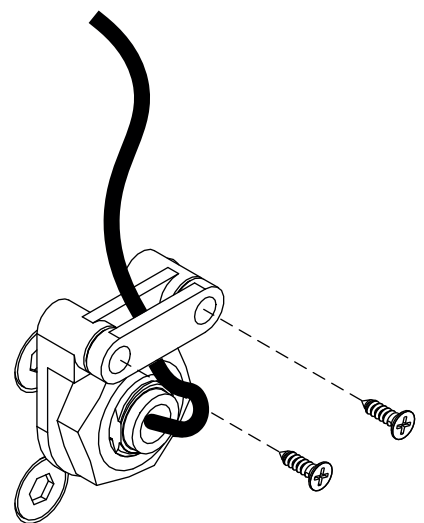
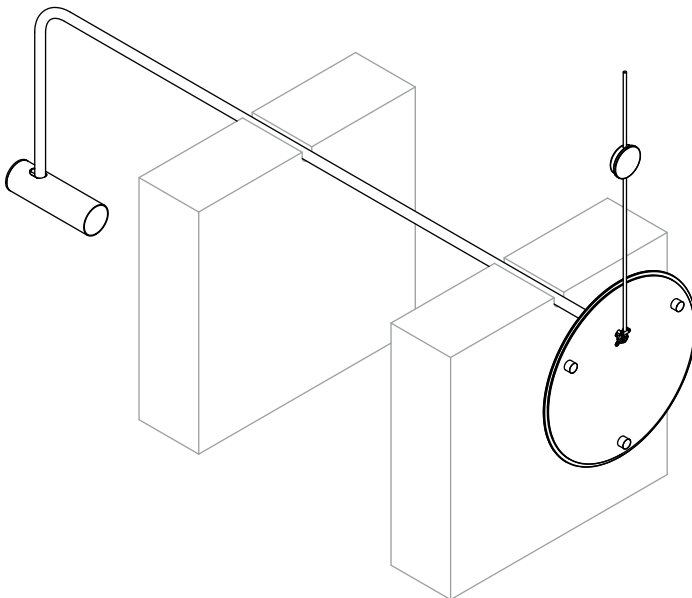


5. With the base positioned on the end of the stem in the correct orientation, move the cable clamp into place and secure with the hex nut.

Note: Ensure that the hex nut is fully secured on the base.



6. With the base securely fixed to the bottom of the stem, remove and replace the screws and clamp on the cable clamp.



- 7.** Lift the Heron Floor upright, supporting the base and stem at all times.

Fit the Heron Floor with a 5w LED GU10 using the supplied bulb removal tool.

