

m o o o i<sup>®</sup>



## Hana Armchair

---

The Hana Armchairs and Footstool are more than a family of seating objects. They are sculp-tured around the human body and its need to be pampered, embraced and accommodated for long stretches of time. Their generous, cute, subtly curves allow for hours of lounging to daydream, read a book and let imagination fly.

---

**Designer**

Simone Bonanni

**Year of design**

2018

# m o o o i<sup>®</sup>

---

## Swivel functionality



# m o o o i<sup>®</sup>

## Behind the comfy folds

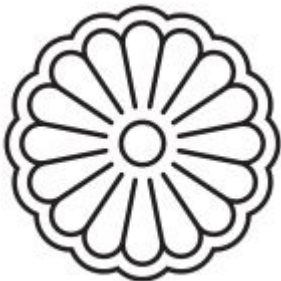


The generous curves of the Hana are complimented with the seemingly casual folds. However, each fold that adorns the curling backrest is carefully thought through, with the unique characteristics of all available fabrics in mind.

Each Hana chair is carefully made with the fabric or leather of your choice. Each fabric behaves differently when creating the backrest due to its own thickness and stretch characteristics. Therefore, the folds in every Hana slightly differ.

---

## The Button



This Moooi design comes with The Button - Digital proof of authenticity

[Read more](#)

## HANA Armchair dimensions

100cm | 39.4"



92cm | 36.2"



74cm | 29.1"

---

## Packaging dimensions

### HANA Armchair

H 70 cm | 27.55"

W 100 cm | 39.37"

D 130 cm | 51.18"

### Total shipping weight:

39KG | 85.9lbs

---

## Macchedil, Sottile

### composition

49% vi, 24% pl, 21% li, 6% co

### abrasion

30.000 martindale

### lightfastness 4

### firetest

EN1021 I&2

m o o o i<sup>®</sup>



Macchedil Sottile  
**Black indigo**



Macchedil Sottile  
**Pinkish**



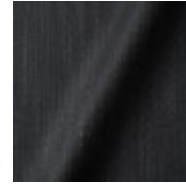
Macchedil Sottile  
**Off white**



Macchedil Sottile  
**Light brown**



Macchedil Sottile  
**Grey grey**



Macchedil Sottile  
**Anthracite**



Macchedil Sottile  
**Cappuccino**



Macchedil Sottile  
**Deep blue**

---

## Macchedil, Grezzo

### composition

47% co, 20% vi, 18% pi, 8% li, 5% pc, 2% af

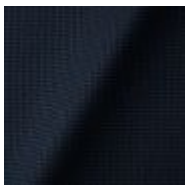
### abrasion

18.000 martindale

### lightfastness 4

### firetest

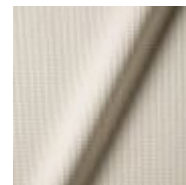
EN1021 I&2



Macchedil Grezzo  
**Black indigo**



Macchedil Grezzo  
**Pinkish**



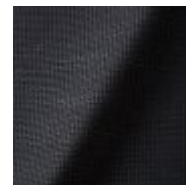
Macchedil Grezzo  
**Off white**



Macchedil Grezzo  
**Light brown**



Macchedil Grezzo  
**Grey grey**



Macchedil Grezzo  
**Anthracite**

m o o o i<sup>®</sup>



Macchedil Grezzo  
**Cappuccino**



Macchedil Grezzo  
**Deepblue**

---

## Abbracci

### composition

100% pl

### abrasion

50.000 martindale

### lightfastness 4

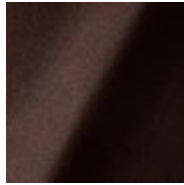
### firetest

FR BS5852 0/1

EN1021 I&2



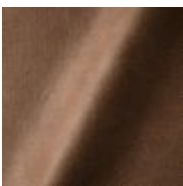
Abbracci  
**Black**



Abbracci  
**Brown**



Abbracci  
**Grey**



Abbracci  
**Taupe**

m o o o i<sup>®</sup>

## Oray

### composition

8% co, 38% vi, 15% pl, 39% li

### abrasion

30.000 martindale

### lightfastness 4

### firetest

FR BS5852 0/1

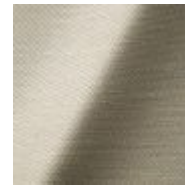
EN 1021 1&2



Oray  
**Cream**



Oray  
**Sand**



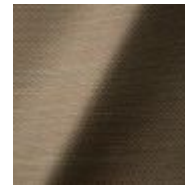
Oray  
**Rock**



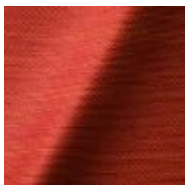
Oray  
**Gravel**



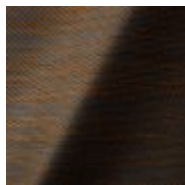
Oray  
**Dark Gull**



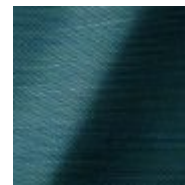
Oray  
**Copper**



Oray  
**Flamboyant**



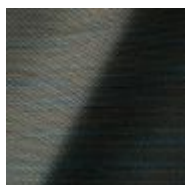
Oray  
**Oil**



Oray  
**Aqua**



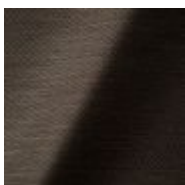
Oray  
**Ocean**



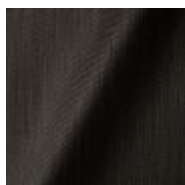
Oray  
**Metal**



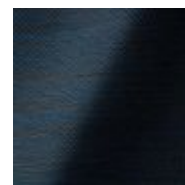
Oray  
**Griffin**



Oray  
**Chestnut**



Oray  
**Dark**



Oray  
**Indigo**

## Solis

### composition

2% PA 3% PC 30% PL 65% WO

### abrasion

40.000 Martindale rubs, EN ISO 12947

### lightfastness

Note 5, EN ISO 105-B02

### firetest

EN 1021-1/2

US. Cal. Bull. 117-2013

Upon request, with treatment:

BS5852 part 1

BS5852 crib 5



Solis  
Crust



Solis  
Dawn



Solis  
Fog



Solis  
Paper



Solis  
Rain



Solis  
Spencer



Solis  
Sunset



m o o o i<sup>®</sup>

## Bouclé

### composition

43% co, 28% pan, 14% pa, 12% vi, 3% pl

### abrasion

20.000> martindale

### lightfastness 4

### firetest

EN1021 I&2



Bouclé  
**Black white**



Bouclé  
**Rainbow**



Bouclé  
**Brown**

---

## Jacquard andaz

### composition:

34% cotton - 30% viscose - 24% linen - 12% polyamide

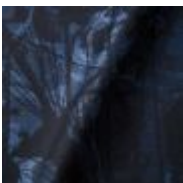
### abrasion:

25000 martindale

### lightfastness 4-5

### firetest:

BS EN 1021 I&2



Jacquard  
**Andaz**

---

m o o o i<sup>®</sup>

## Jaquard Fresco

**composition**

40% vi ,36% co, 14% pl, 10% li

**abrasion**

20.000> martindale

**lightfastness** 4-5

**firetest**

EN1021 I&2



Jaquard  
**Fresco**

---

## Jacquard Old Black & Blue

**composition**

52% vi, 38% co, 10% li

**abrasion**

20.000> martindale

**lightfastness** 4-5

**firetest**

EN1021 I&2



Jaquard  
**Old Blue**



Jaquard  
**Old Black**

m o o o i<sup>®</sup>

## Justo

### composition

15% CO, 35% PC, 10% PL, 40% VI

### abrasion

50.000 Martindale rubs, EN ISO 12947

### lightfastness

Note 5, EN ISO 105-B02

### fire test

EN 1021-1/2

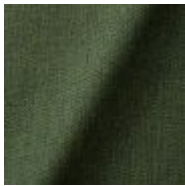
US. Cal. Bull. 117-2013

NFPA 260

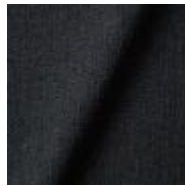
Upon request, with treatment:

BS5852 part I

BS5852 crib5



Justo  
**Alge**



Justo  
**Bazalt**



Justo  
**Bred**



Justo  
**Hinde**



Justo  
**Lyse**



Justo  
**Muse**



Justo  
**Sennep**



Justo  
**Sten**

m o o o i<sup>®</sup>

## Liscio

### composition

35% WO / 35% CV / 21% CO / 9% PA

### abrasion

30.000 Martindale

### lightfastness

4-6

### firetest

US. Cal. Bull. 117-2013

Upon request, with treatment:

BS5852 part I



Liscio  
**Grigio Blu Scuro**



Liscio  
**Grigio Blu**



Liscio  
**Grigio Scuro**



Liscio  
**Muscio**



Liscio  
**Argento**



**Liscio**  
Nebbia



Liscio  
**Perla**



Liscio  
**Latte Scuro**



Liscio  
**Latte**

m o o o i<sup>®</sup>

## Vesper

### composition

10% CO, 40% L, 10% PA, 10% PL, 30% VI

### abrasion

40.000 Martindale rubs, EN ISO 12947

### lightfastness

Note 5, EN ISO 105-B02

### firetest

EN 1021-1/2

US. Cal. Bull. 117-2013

Upon request, with treatment:

BS5852 part 1

BS5852 crib 5



Vesper  
**Aluminium**



Vesper  
**Brass**



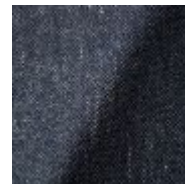
Vesper  
**Bronze**



Vesper  
**Nickel**



Vesper  
**Silver**



Vesper  
**Steel**

m o o o i<sup>®</sup>

## Divina 3

**Composition**

100% new wool

**Martindale**

45.000

**Pilling**

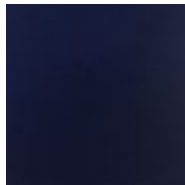
3

**Lightfastness**

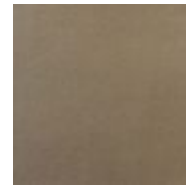
7



Divina 3  
**Black**



Divina 3  
**Blue**



Divina 3  
**Brown**

---

## Divina Melange 2

**Composition**

100% New wool

**Durability**

45.000 Martindale

**Pilling**

3

**Lightfastness**

6-7

**Sustainability**

Natural fibres / Sustainable resource

# m o o o i<sup>®</sup>



Divina Melange  
120



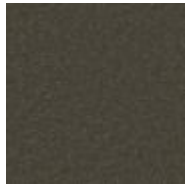
Divina Melange  
170



Divina Melange  
180



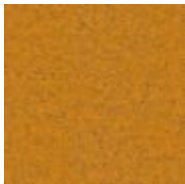
Divina Melange  
260



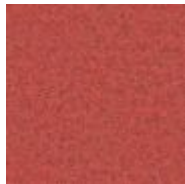
Divina Melange  
280



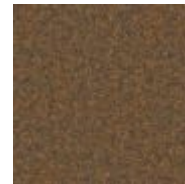
Divina Melange  
421



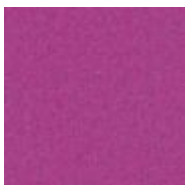
Divina Melange  
521



Divina Melange  
531



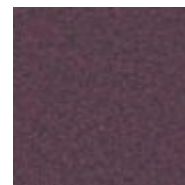
Divina Melange  
571



Divina Melange  
620



Divina Melange  
631



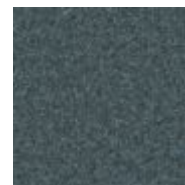
Divina Melange  
671



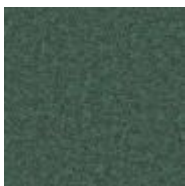
Divina Melange  
721



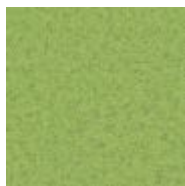
Divina Melange  
731



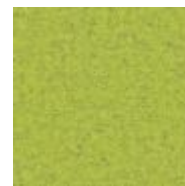
Divina Melange  
771



Divina Melange  
871



Divina Melange  
920



Divina Melange  
931

m o o o i<sup>®</sup>

## Twill

### composition

72% wo, 8% pa, 20% pl

### abrasion

75.000 martindale

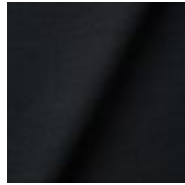
### lightfastness 5

### firetest

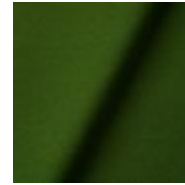
EN1021 I&2



Twill  
**Caviar**



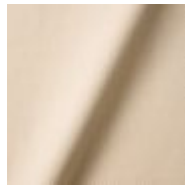
Twill  
**Graphite**



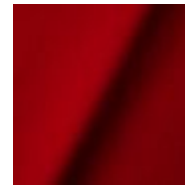
Twill  
**Grass**



Twill  
**Linen**



Twill  
**Natural**



Twill  
**Passion**



## Twill Melange

### composition

60% WO / 20% PES / 20% PA

### abrasion

80.000 martindale

### lightfastness 6-7

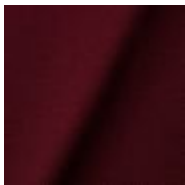
### firetest

EN1021-1/2

US. Cal. Bull. 117-2013

BS5852 part I

DIN 4102-B2



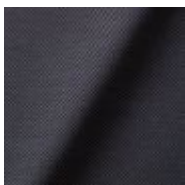
Twill Melange  
**Chili**



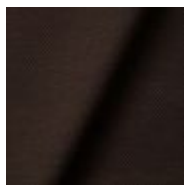
Twill Melange  
**Dust**



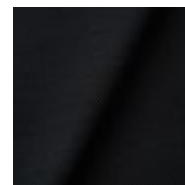
Twill Melange  
**Flour**



Twill Melange  
**Lavender**



Twill Melange  
**Peat**



Twill Melange  
**Slate**

m o o o i<sup>®</sup>

## Trickle

### composition

60% WO / 20% PES / 20% PA

### abrasion

80.000 martindale

### lightfastness 6

### firetest

EN1021-1/2

US. Cal. Bull. 117-2013

BS5852 part1

DIN 4102-B2



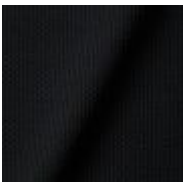
Trickle  
**Flour**



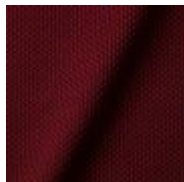
Trickle  
**Twig**



Trickle  
**Peat**



**Trickle**  
Slate



Trickle  
**Chili**



Trickle  
**Lavender**

## Velour

### composition

77% wo, 8% pa, 15% pl

### abrasion

100.000 martindale

### lightfastness 7

### firetest

FR BS5852 0/1

EN1021 I&2



Velour  
**Coral**



Velour  
**Stone**



Velour  
**Moss**

---

## The Menagerie of Extinct Animals

### composition

100% PES

### abrasion

50.000 Martindale rubs, EN ISO 12947

### lightfastness

Note 4-6, EN ISO 105-B02

### firetest

EN1021-I/2

Upon request, with treatment;

BS5852 part I

m o o o i<sup>®</sup>



**Extinct Animals  
Fabric Collection**  
The Menagerie of  
Extinct Animals

---

## Dodo Pavone Jacquard

**composition**

12% CO 88% PL

**abrasion**

40.000 Martindale rubs, EN ISO 12947

**lightfastness**

Note 5, EN ISO 105-B02

**firetest**

US. Cal. Bull. 117-2013

Upon request, with treatment:

BS5852 part I



**Extinct Animals  
Fabric Collection**  
Dodo Pavone Jacquard



## Bearded Leopard Jacquard

### composition

77% VI / 15% PES / 7% CO / 1% PA

### abrasion

15.000 Martindale rubs, EN ISO 12947

### lightfastness

Note 4-6, EN ISO 105-B02

### firetest

EN1021-1/2

Upon request and with treatment:

BS5852 part I



**Extinct Animals  
Fabric Collection**  
Bearded Leopard  
Jacquard

---

## Blushing Sloth Melange Mohair

### composition

29% LANA / 24% LANA WM / 24% PES / 15% PA / 8% CO

### abrasion

40.000 Martindale rubs, EN ISO 12947

### lightfastness

Note 4-6, EN ISO 105-B02



**Extinct Animals  
Fabric Collection**  
Blushing Sloth Melange  
Mohair

m o o o i<sup>®</sup>

## Calligraphy Bird Jacquard

### composition

64% VI, 21% PES, 15% CO

### abrasion

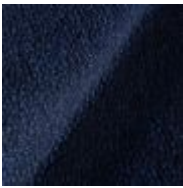
50.000 Martindale rubs, EN ISO 12947

### lightfastness

Note 4-6, EN ISO 105-B02

### firetest

Upon request, with treatment;  
BS5852 part I



Extinct Animals Fabric  
Collection  
Calligraphy Bird  
Jacquard

---

## Cervino Leather

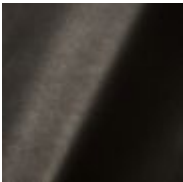
### composition

100% aniline leather

Leather is a natural product, colours may vary from hide to hide.

### firetest

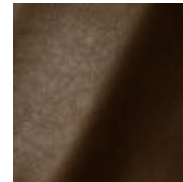
EN1021 I&2



Cervino Leather  
**Anthracite**



Cervino Leather  
**Cognac**



Cervino Leather  
**Mud**



## Arredo Leather

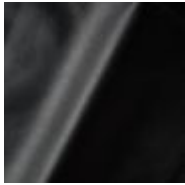
### composition

100% semi aniline leather

Leather is a natural product, colours may vary from hide to hide.

### firetest

EN1021 I&2



Arredo Leather  
**Black**



Arredo Leather  
**Brown**



Arredo Leather  
**White**

---

## Kvadrat Fabrics

### Kvadrat Fabrics

Selected Moooi products can be upholstered with a collection of Kvadrat fabrics. Kvadrat designs high-quality upholstery, in an extensive range of colours and textures.

Go to our Kvadrat fabrics page for a full overview of all fabric families you can choose from.



Image not found or type unknown