

HIDDENWIDE.RS-NST6

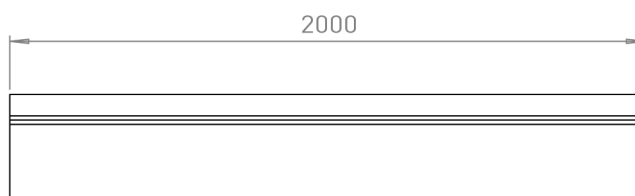
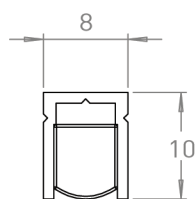
Hidden Channel Datasheet



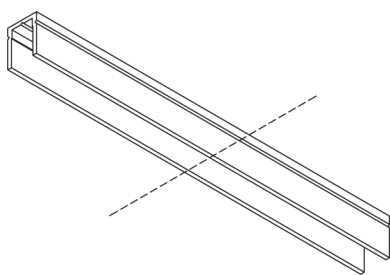
Product codes

Unit:	Type:	Compatible Strip Light:	Length:	Colour:	Version:
HIDDENWIDE	RS (RECESSED/SURFACE)	NST6 (NST6.IP-LN)	2.0m	W (White)	1.0

Dimensions (mm)

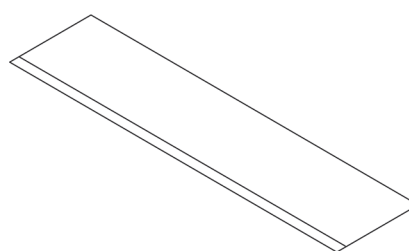


Installation - Recessed



Step 1

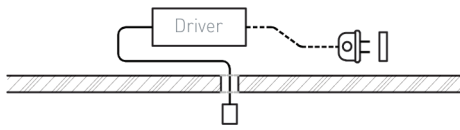
Cut the Channel down to size.



Step 2

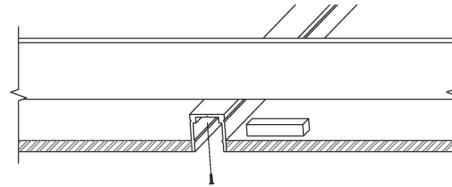
Using a 8mm Router Bit, cut a 8mm wide slot and 10mm deep slot into 10mm plaster board or 10mm into joinery.

Installation - Recessed



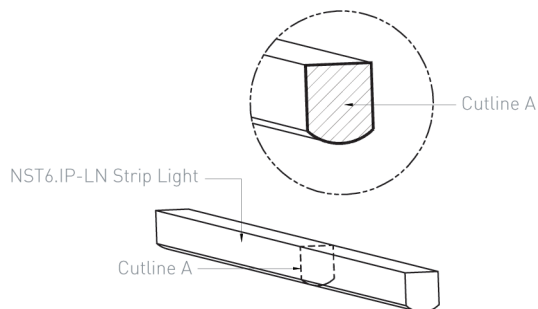
Step 3

Remote mount and connect the driver to the mains power cable in line with the Australian Standards. Ensure the low voltage cable is routed through the hole cut.



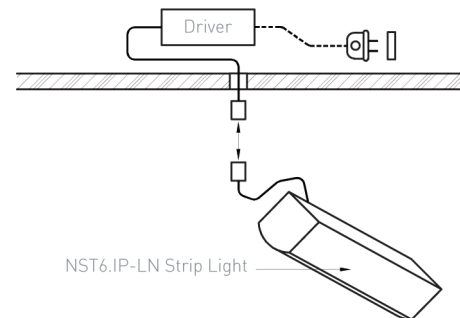
Step 4

Insert the Channel into the slot and fix it to the joists using the screw provided.



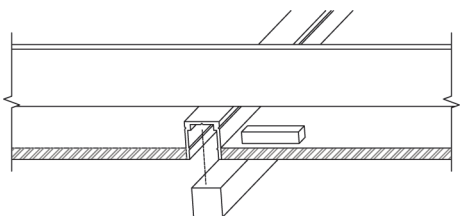
Step 5

Cut the strip light to length that matches the channel length.



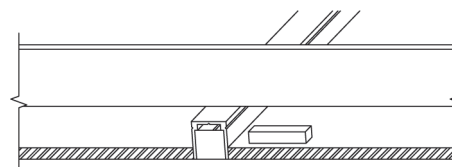
Step 6

Wire the NST6.IP-LN Striplight into the driver (sold separately) using the wire crimps.



Step 7

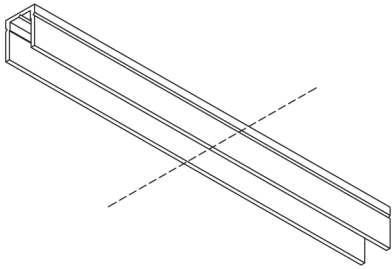
Snap the NST6.IP-LN Striplight into the channel.



Step 8

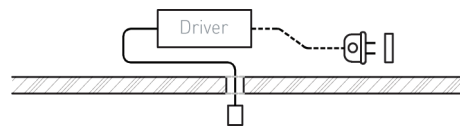
Installation Complete.

Installation - Surface



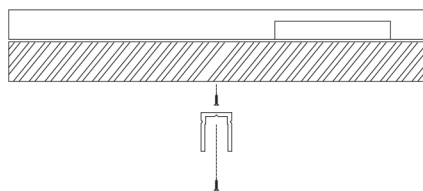
Step 1

Cut the Channel down to size.



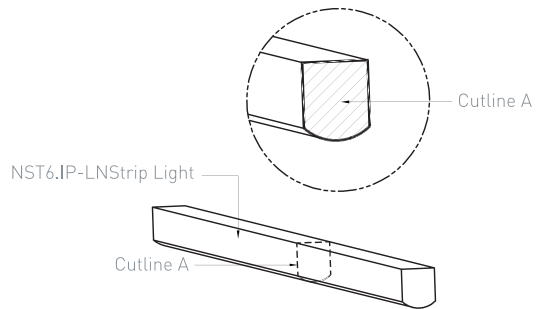
Step 2

Remote mount and connect the driver to the mains power cable in line with the Australian Standards. Ensure the low voltage cable is routed through the hole cut.



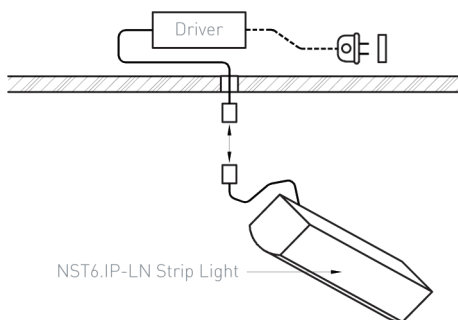
Step 3

Attach the hidden channel with the provided screws.



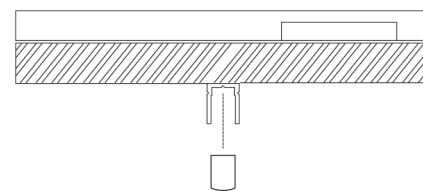
Step 4

Cut the strip light to length that matches the channel length.



Step 5

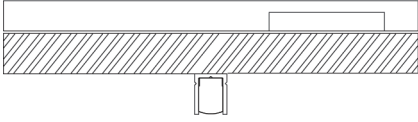
Wire the NST6.IP-LN Striplight into the driver (sold separately) using the wire crimps.



Step 6

Snap the NST6.IP-LN Striplight into the channel.

Installation - Surface



Step 7

Installation Complete.