

outdoor

Grada outdoor

Round coffee table / centro redondo

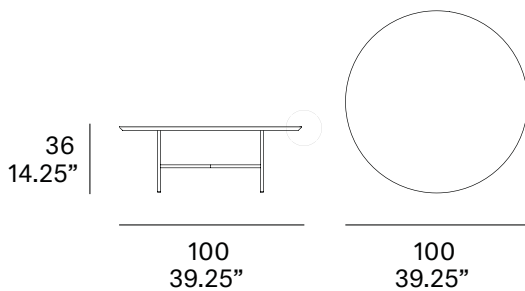
Lievore Altherr Molina 2016

C917

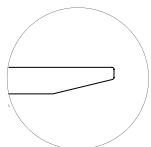


Structure made of stainless steel tube, finished with polyester powder. Three tabletop options: Trespa® HPL 13 mm/0.51" thick, Dekton® and Kerlite® porcelain.

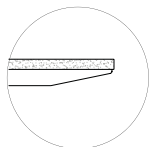
Estructura fabricada en tubo de acero inoxidable, acabado en pintura de polvo de poliéster. Tres opciones de tablero: HPL Trespa® de 13 mm, Dekton® y porcelánico Kerlite®.



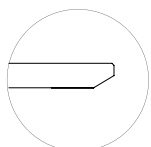
Tabletop options:



- Trespa® HPL 13 mm/0.51" thick.



- Kerlite® porcelain 5 mm/0.19" + Trespa® HPL 8 mm/0.31" thick.



- Dekton® 12 mm/0.47".

Shipment details

Qty 1 coffee table (2 boxes)

Volume 0,27 m3 / 9.5 ft3

HPL Top option

Gross weight 18 kg / 40 lb

Net weight 14 kg / 31 lb

Kerlite Top option

Gross weight 27 kg / 60 lb

Net weight 23 kg / 51 lb

Dekton top option

Gross weight 37 kg / 82 lb

Net weight 33 kg / 73 lb

Item dimensions

(width x depth x height)

100 x 100 x 36 cm

39.25" x 39.25" x 14.25"

expormim

Expormim S.A.
Pol. Ind. Jaime I
46640 Mogente (Valencia) Spain
+34 962 295 144/5
export@expormim.com
www.expormim.com

Expormim USA LLC
(212) 204-8572
usa@expormim.com
www.expormim.com

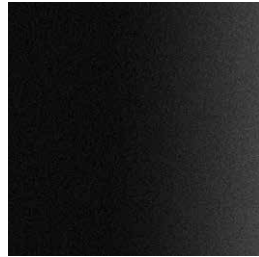
1/3

Frame / estructura

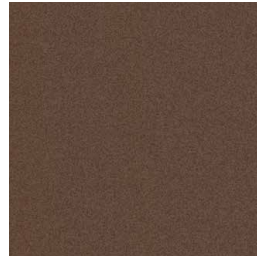
metallic finishes / metales



100 White



101 Black



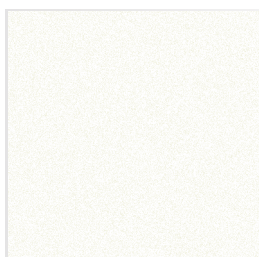
108 FT oxide
fine textured



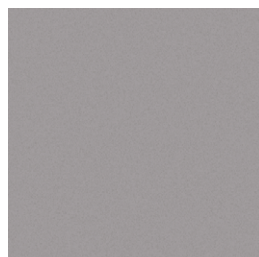
109 FT champagne
fine textured

Top / tapa

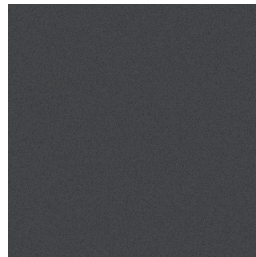
HPL Trespa®



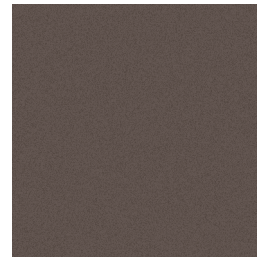
300 White



302 Grey



303 Anthracite



208 Natural greige

Kerlite®



K11 Champagne



K12 Argerot

Dekton®



D1 irok



D2 kelya