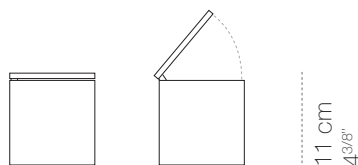
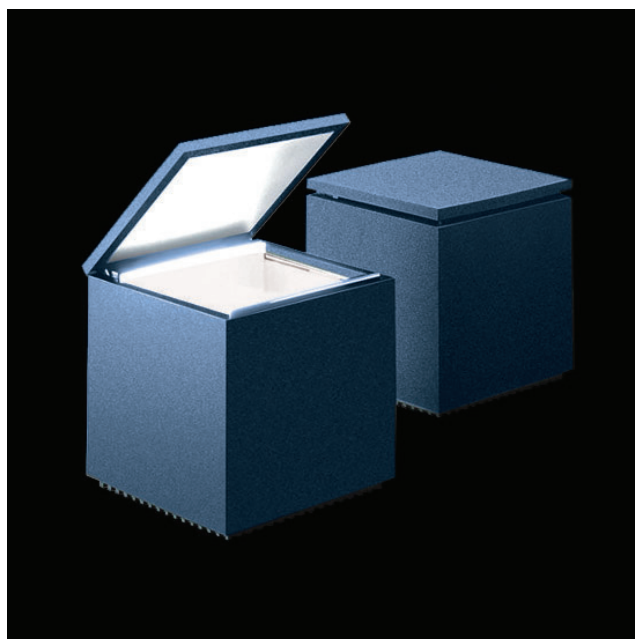


Cuboluce classic



10x10 cm
4"x4"



| luminaire | | light source | |
|-------------------|--|--------------------|--------|
| materials | technopolymers | source | LED |
| environment | interiors | socket | E14 |
| mounting location | table | bulb included | sì |
| emission | indirect and concentrated light | number of bulbs | 1 |
| weight | 0,5 kg | power | 3W |
| voltage | 220-240VAC | colour temperature | 2.700K |
| insulation class | 2 | luminous flux | 260 lm |
| plug | european 2 poles | energy label | |
| IP classification | IP20 | | |
| certifications | CE, RoHS, REACH | | |
| design | Franco Bettonica, Mario Melocchi, 1972 | | |

finish and code



white
cod 136



red
cod 137



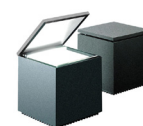
black
cod 138



silk lacquer
denim
cod 251



silk lacquer
green
cod 250



silk lacquer
anthracite
cod 139



metallizzato
silver
cod 288



matt gold
cod 249



grafiauno
cod 245



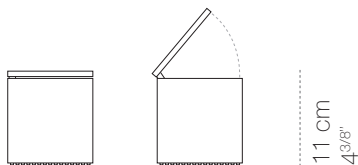
pentacolor
cod 294

special edition

Cuboluce classic



BRITTO®

Pinotti 76

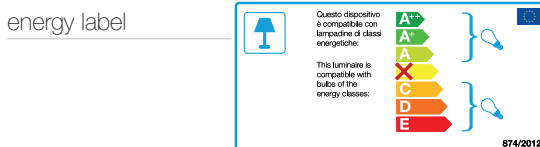


10x10 cm
4"x4"



| luminaire | |
|-------------------|--|
| materials | technopolymers |
| environment | interiors |
| mounting location | table |
| emission | indirect and concentrated light |
| weight | 0,5 kg |
| voltage | 220-240VAC |
| insulation class | 2 |
| plug | european 2 poles |
| IP classification | IP20 |
| certifications | CE   |
| design | Franco Bettonica, Mario Melocchi, 1972-2019 |

| light source | |
|--------------------|--------|
| source | LED |
| socket | E14 |
| bulb included | sì |
| number of bulbs | 1 |
| power | 3W |
| colour temperature | 2.700K |
| luminous flux | 260 lm |



finish and code



people
cod 252



graphic
cod 253



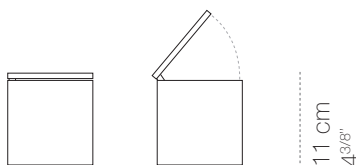
black
cod 254



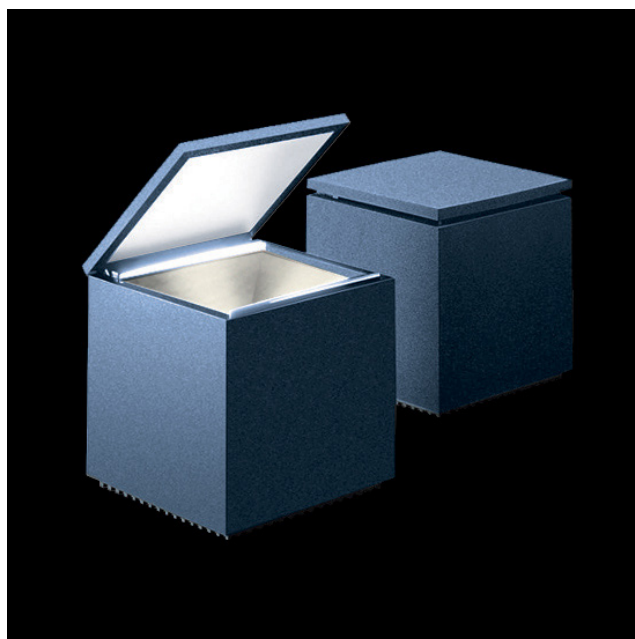
white
cod 255

CINI & NILS

Cuboluce led

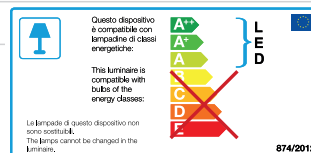


10x10 cm
4"x4"



| luminaire | |
|-------------------|---|
| materials | technopolymers |
| environment | interiors |
| mounting location | table |
| emission | indirect and concentrated light |
| weight | 0,5 kg |
| voltage | 100-240VAC |
| insulation class | 2 |
| plug | european 2 poles |
| IP classification | IP20 |
| certifications | CE □ |
| design | Franco Bettonica, Mario Melocchi, 1972-2013 |

| light source | |
|--------------------|--------|
| source | LED |
| numero LED | 1 |
| power | 2W |
| colour temperature | 2.700K |
| CRI | 90 |
| energy label | |



finish and code



white
cod 136



red
cod 137



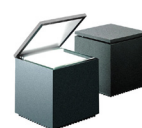
black
cod 138



silk lacquer
denim
cod 251



silk lacquer
green
cod 250



silk lacquer
anthracite
cod 139



metallizzato
silver
cod 288



matt gold
cod 249

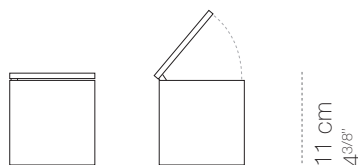


grafiauno
cod 245

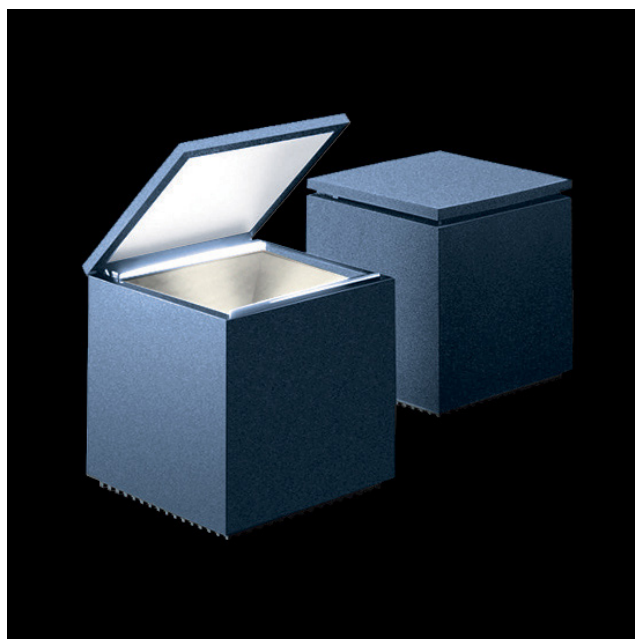



pentacolor
cod 294

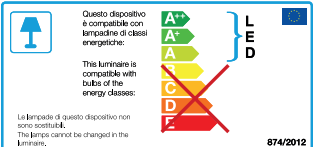
Cuboluce wireless



10x10 cm
4"x4"



| luminaire | |
|-------------------|--|
| materials | technopolymers |
| environment | interiors |
| mounting location | table |
| emission | indirect and concentrated light |
| weight | 0,55 kg |
| voltage | 100-240VAC |
| insulation class | 3 |
| caricabatteria | a plug (european 2 poles) |
| IP classification | IP20 |
| certifications | CE  |
| design | Franco Bettonica, Mario Melocchi, 1972-2018 |

| light source | |
|--------------------|---|
| source | LED |
| numero LED | 1 |
| power | 2W |
| colour temperature | 2.700K |
| CRI | 90 |
| energy label |  |

| battery | |
|---------------|-------------|
| tipo | lithium-ion |
| capacity | 3.400 mAh |
| range | 8 h |
| charging time | max 4 h |

finish and code



white
cod 136



red
cod 137



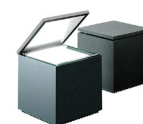
black
cod 138



silk lacquer
denim
cod 251



silk lacquer
green
cod 250



silk lacquer
anthracite
cod 139



metallizzato
silver
cod 288



matt gold
cod 249



grafiauno
cod 245



pentacolor
cod 294

CINI & NILS