

---

# Bolle Orizzontale

---

*Massimo Castagna*  
2019



# Bolle Orizzontale

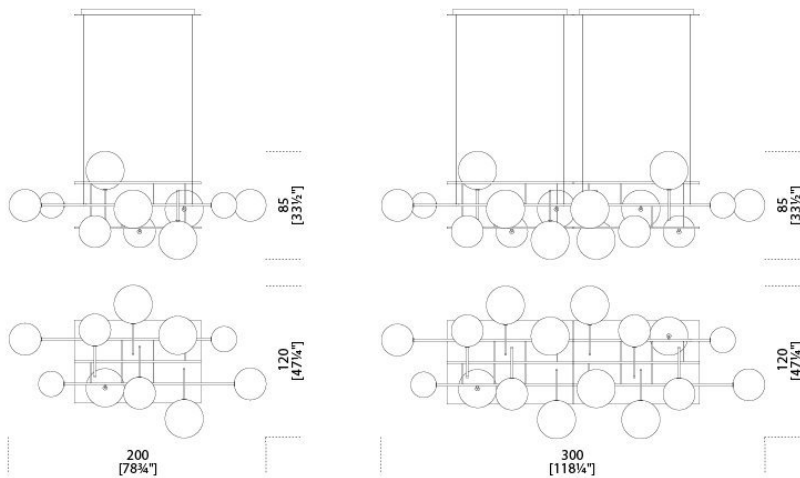
Massimo Castagna , 2019

Lampada a sospensione a luce LED dimmerabile (G4 2700 Kelvin). Composta da 10 sfere (A) oppure 16 sfere (B) in cristallo trasparente soffiato a bocca. Parti metalliche in ottone brunito a mano. L'ottone risulta naturalmente macchiato e disomogeneo. Luce dimmerabile. In dotazione cavo di 4mt.

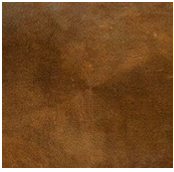
Hanging lamp with dimmable LED light (G4 2700 Kelvin). 10 (A) or 16 (B) transparent blown glass spheres. Metal parts in hand burnished brass. The hand burnished brass finish looks naturally spotted and irregular. Dimmable light. Supplied with cable 4mt long.

Dimensioni / Sizes  
Cm (W x D x H)  
A 200 x 120 x 85  
B 300 x 120 x 85

Inches (W x D x H)  
A 78¾" x 47¼" x 33½"  
B 118¼" x 47¼" x 33½"



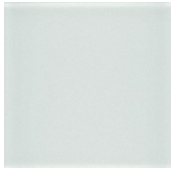
*Metallo / Metal*



*Ottone brunito  
a mano  
Hand  
burnished  
brass*

---

*Cristallo / Glass*



*Trasparente  
Transparent*

---