

# Blade R

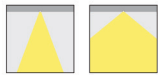
ø 80



frame



minimal



**M**  
α 24°    **WF**  
α 40°-58°

ø 125



frame



minimal



**M**  
α 24°    **WF**  
α 42°-58°



Cover



Cover



Multisensor



Palco Framer ø 19 mm



Adjustable Laser ø 59 mm

ø 170



frame

ø 170



frame



minimal



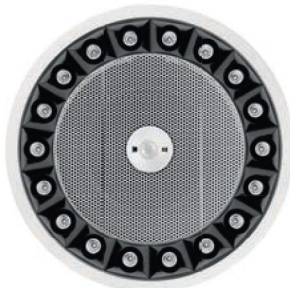
**F**  
α 26°    **WF**  
α 44°/58°



**M**  
α 24°    **WF**  
α 44°



Cover



Multisensor



Speaker



Cover



Emergency



Videocamera\*



Smoke detector\*



Palco Framer ø 37 mm



Adjustable Laser ø 75 mm



Easy ø 96 mm

\* for information on compatible Videocamera and Smoke detector contact iGuzzini

# Blade R

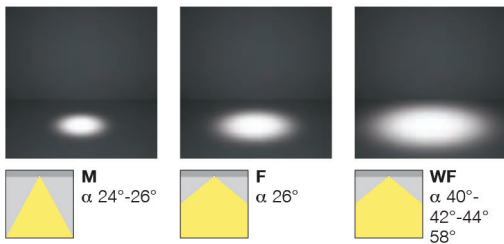


Explore and interact with products in 3D.  
[thelightexperience.iguzzini.com](http://thelightexperience.iguzzini.com)



- Flush-mount installation on false ceilings of thickness 12.5 to 25 mm for Minimal versions (without perimeter flap) or 1 to 25 mm for Frame versions (with flap) using torsion springs.
- Main body with radiant surface made of die-cast aluminium.
- High-definition optics made of metallised thermoplastic material, integrated in the innovative black antiglare screen that defines emission with luminance control  $UGR < 10$ .
- The special configuration of the optical system delivers a precise circular distribution without a spotting effect.
- High visual comfort.
- Installation without tools.
- The minimum installation space dimensions are listed in the online instruction catalogue.
- IP20
- IP23 on the visible body of the mount after installation.

## Optics

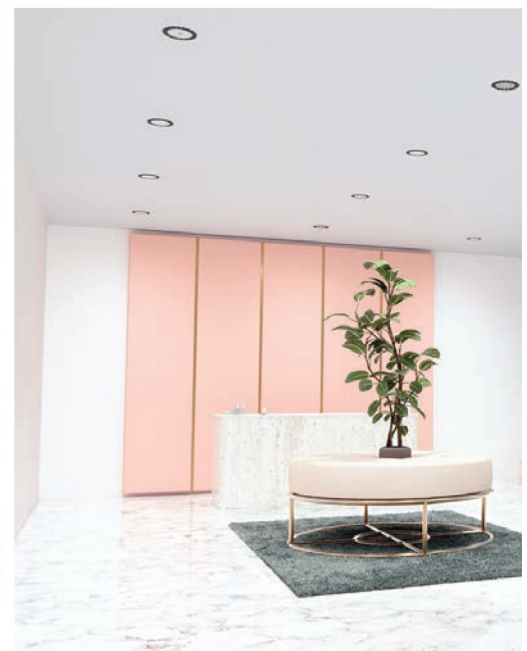


## Formal and functional integration

Blade R develops the concept of integration in architecture for human well-being by enabling smart security, entertainment, comfort and sustainability services.



Without Blade R



With Blade R

### Emergency Light

Optics for escape routes or panic exits (open area).  
Autonomy of 3 h, can be used as maintained / non-maintained.



### Loudspeaker

Audio speaker for music / messages and evacuation (P.A. 100V) adaptable to traditional audio (8 ohm) and CPR / EN54-24 certified systems.



### BLE Multisensor

Movement and light sensor. Compatible with the Bluetooth Quick BLE system, it is also equipped with a Beacon to enable smart services.



### Video camera

Adapter for video surveillance camera built into the product. For compatible models, contact iGuzzini.



### Smoke detector

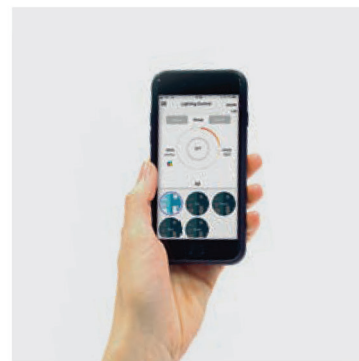
Cover with adapter bracket for targeted optical smoke detector. For compatible models, contact iGuzzini.



### Smart Light

#### Smart Services

The Bluetooth-DALI interface enables light management directly from smartphones (Smart Light Control) or to send information (Smart Services)



### Dual adjustability

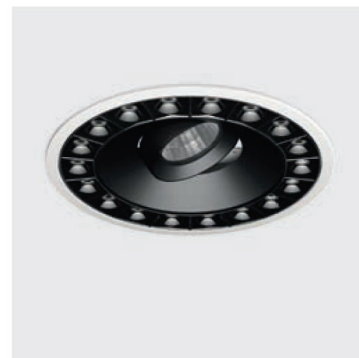
The product is completely withdrawn and, in addition to rotating by 30° on the horizontal axis, it also allows rotation of up to 355° on the vertical axis. Adjustable laser



M  
 $\alpha$  16°

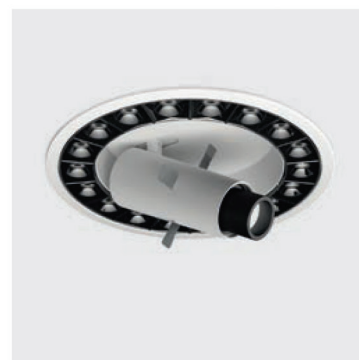


F  
 $\alpha$  26°



### Framed light

Precision adjustment by rotating the body without opening the product and directional flaps for manual adjustment of outlines. Palco Framer Low Voltage  $\varnothing$  19-37mm

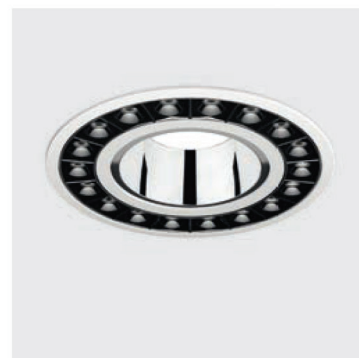


### Variable light

Diffused light with very high performance values and light ensuring high visual comfort for total luminance control. Monochromatic, tunable white, RGB versions. Easy  $\varnothing$ 96 mm



GL /  
UGR<19

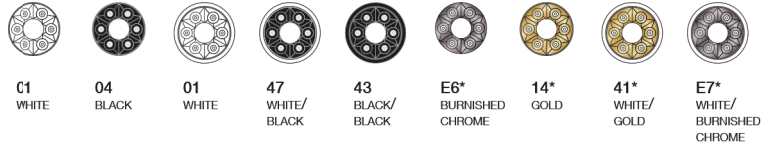


### Cover

To ensure an absolute aesthetic integration in architecture, the central cover can also be customised and paint-finished in the desired color, in compliance with the ceiling.



# Blade R




iguzzini.com code finder / download design files / save and organize favorites

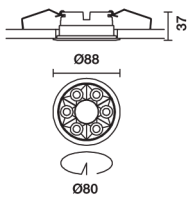
**new**  
Available

\* available on request

**new**




source		system		optic	code	colour
W	lm	W	lm			
<b>Frame version</b>						
<b>LED</b>						
4000K - CRI 80						
12W	1400	14,1W	1120	24°	QS03	01-43-47
12W	1400	14,1W	1162	40°	QS04	01-43-47
12W	1400	14,1W	1176	58°	QS05	01-43-47
4000K - CRI 90						
12W	1200	14,1W	960	24°	QS06	01-43-47
12W	1200	14,1W	996	40°	QS07	01-43-47
12W	1200	14,1W	1008	58°	QS08	01-43-47
3000K - CRI 90						
12W	1050	14,1W	840	24°	QS09	01-43-47
12W	1050	14,1W	872	40°	QS10	01-43-47
12W	1050	14,1W	882	58°	QS11	01-43-47
2700K - CRI 90						
12W	1000	14,1W	800	24°	QS12	01-43-47
12W	1000	14,1W	830	40°	QS13	01-43-47
12W	1000	14,1W	840	58°	QS14	01-43-47
4000K - CRI 80 - DALI						
12W	1400	14,5W	1120	24°	QS15	01-43-47
12W	1400	14,5W	1162	40°	QS16	01-43-47
12W	1400	14,5W	1176	58°	QS17	01-43-47
4000K - CRI 90 - DALI						
12W	1200	14,5W	960	24°	QS18	01-43-47
12W	1200	14,5W	996	40°	QS19	01-43-47
12W	1200	14,5W	1008	58°	QS20	01-43-47
3000K - CRI 90 - DALI						
12W	1050	14,5W	840	24°	QS21	01-43-47
12W	1050	14,5W	872	40°	QS22	01-43-47
12W	1050	14,5W	882	58°	QS23	01-43-47
2700K - CRI 90 - DALI						
12W	1000	14,5W	800	24°	QS24	01-43-47
12W	1000	14,5W	830	40°	QS25	01-43-47
12W	1000	14,5W	840	58°	QS26	01-43-47

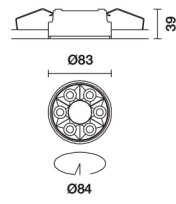


Complete with power supply

**new**

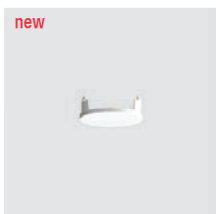


source		system		optic	code	colour
W	lm	W	lm			
<b>Minimal version</b>						
<b>LED</b>						
4000K - CRI 80 - DALI						
12W	1400	14,5W	1120	24°	QS68	01-04
12W	1400	14,5W	1162	40°	QS69	01-04
12W	1400	14,5W	1176	58°	QS70	01-04
4000K - CRI 90 - DALI						
12W	1200	14,5W	960	24°	QS71	01-04
12W	1200	14,5W	996	40°	QS72	01-04
12W	1200	14,5W	1008	58°	QS73	01-04
3000K - CRI 90 - DALI						
12W	1050	14,5W	840	24°	QS74	01-04
12W	1050	14,5W	872	40°	QS75	01-04
12W	1050	14,5W	882	58°	QS76	01-04
2700K - CRI 90 - DALI						
12W	1000	14,5W	800	24°	QS77	01-04
12W	1000	14,5W	830	40°	QS78	01-04
12W	1000	14,5W	840	58°	QS79	01-04
4000K - CRI 80 - On/off						
12W	1400	14,1W	1120	24°	QS56	01-04
12W	1400	14,1W	1162	40°	QS57	01-04
12W	1400	14,1W	1176	58°	QS58	01-04
4000K - CRI 90 - On/off						
12W	1200	14,1W	960	24°	QS59	01-04
12W	1200	14,1W	996	40°	QS60	01-04
12W	1200	14,1W	1008	58°	QS61	01-04
3000K - CRI 90 - On/off						
12W	1050	14,1W	840	24°	QS62	01-04
12W	1050	14,1W	872	40°	QS63	01-04
12W	1050	14,1W	882	58°	QS64	01-04
2700K - CRI 90 - On/off						
12W	1000	14,1W	800	24°	QS65	01-04
12W	1000	14,1W	830	40°	QS66	01-04
12W	1000	14,1W	840	58°	QS67	01-04



To install minimal products a PA67 flange is required.  
Complete with power supply

**new**



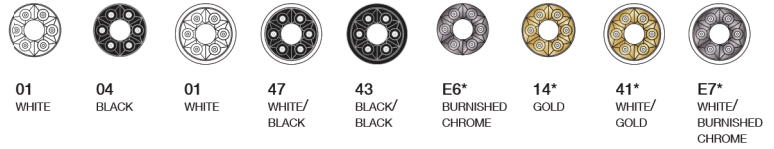
code		colour
<b>Cover</b>		
		PA89 01-04

**Mounting accessories**      code    colour



for false ceilings between **PA67** 01  
12.5 mm and 20 mm thick

# Blade R



**new**

Available

Framer and Adjustable Laser Palco available from June

\* available on request

source	system		optic	code	colour
	W	lm			
<b>Frame version</b>					
<b>LED</b>					
4000K - CRI 80 - DALI					
24W	2800	26,8W	2212 24°	<b>QT04</b>	01-43-47
24W	2800	26,8W	2352 42°	<b>QS27</b>	01-43-47
24W	2800	26,8W	2380 58°	<b>QS28</b>	01-43-47
4000K - CRI 90 - DALI					
24W	2350	26,8W	1857 24°	<b>QS29</b>	01-43-47
24W	2350	26,8W	1974 42°	<b>QS30</b>	01-43-47
24W	2350	26,8W	1998 58°	<b>QS31</b>	01-43-47
3000K - CRI 90 - DALI					
24W	2100	26,8W	1659 24°	<b>QS32</b>	01-43-47
24W	2100	26,8W	1764 42°	<b>QS33</b>	01-43-47
24W	2100	26,8W	1785 58°	<b>QS34</b>	01-43-47
2700K - CRI 90 - DALI					
24W	2000	26,8W	1580 24°	<b>QS35</b>	01-43-47
24W	2000	26,8W	1680 42°	<b>QS36</b>	01-43-47
24W	2000	26,8W	1700 58°	<b>QS37</b>	01-43-47

Complete with power supply

source	system		optic	code	colour
	W	lm			
<b>Minimal version</b>					
<b>LED</b>					
4000K - CRI 80 - DALI					
24W	2800	26,8W	2212 24°	<b>QS80</b>	01-04
24W	2800	26,8W	2352 42°	<b>QS81</b>	01-04
24W	2800	26,8W	2380 58°	<b>QS82</b>	01-04
4000K - CRI 90 - DALI					
24W	2350	26,8W	1857 24°	<b>QS83</b>	01-04
24W	2350	26,8W	1974 42°	<b>QS84</b>	01-04
24W	2350	26,8W	1998 58°	<b>QS85</b>	01-04
3000K - CRI 90 - DALI					
24W	2100	26,8W	1659 24°	<b>QS86</b>	01-04
24W	2100	26,8W	1764 42°	<b>QS87</b>	01-04
24W	2100	26,8W	1785 58°	<b>QS88</b>	01-04
2700K - CRI 90 - DALI					
24W	2000	26,8W	1580 24°	<b>QS89</b>	01-04
24W	2000	26,8W	1680 42°	<b>QS90</b>	01-04
24W	2000	26,8W	1700 58°	<b>QS91</b>	01-04

To install minimal products a PA68 flange is required.  
Complete with power supply

source	system		optic	code	colour
	W	lm			
<b>Palco Framer ø 19 mm</b>					
<b>LED</b>					
3000K - CRI 90 - DALI					
-	-	-	-	<b>Framer</b>	<b>PB13</b> 01-04
2700K - CRI 90 - DALI					
-	-	-	-	<b>Framer</b>	<b>PB14</b> 01-04

Complete with power supply

source	system		optic	code	colour
	W	lm			
<b>Laser adjustable ø 59 mm</b>					
<b>LED</b>					
3000K - CRI 90 - DALI					
-	-	-	-	16°	<b>PB17</b> 01-04
-	-	-	-	26°	<b>PB18</b> 01-04
2700K - CRI 90 - DALI					
-	-	-	-	16°	<b>PB19</b> 01-04
-	-	-	-	26°	<b>PB20</b> 01-04

Complete with power supply

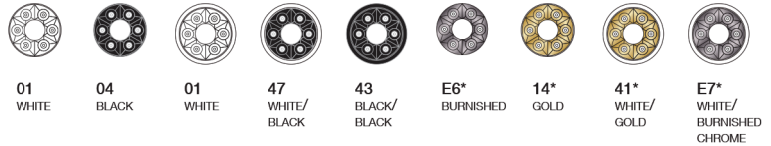
code	colour
<b>BLE Light and movement multi-sensor</b>	
<b>PB06</b>	01-47

Compatible with the Quick BLE smart light system. Power supply to be ordered separately.

code	colour
<b>Cover</b>	
<b>PA90</b>	01-04

Mounting accessories	code	colour	Power supply	code	colour
Minimal flange			Constant voltage driver IP20 24 Vdc 13 W - Vin 220-240 V - CL II - Dimensions 158x22x19 mm	<b>PA98</b>	00
for false ceilings between 12.5 mm and 20 mm thick	<b>PA68</b>	01			

# Blade R



**new**  
~~new~~

Palco Framer, Adjustable Laser available from June / emergency light, speaker and multisensor available from April / adapter video camera cover available from July  
Easy 4000/3000 / 2700K and TW versions available from May / Easy RGB available from September

\* available on request

**new**

source	system					
W	lm	W	lm	optic	code	colour
<b>Frame version</b>						
<b>LED</b>						
4000K - CRI 80 - DALI						
36W	4200	39,1W	3318	26°	QS38	01-43-47
36W	4200	39,1W	3486	44°	QS39	01-43-47
36W	4200	39,1W	3528	58°	QS40	01-43-47
4000K - CRI 90 - DALI						
36W	3500	39,1W	2765	26°	QS41	01-43-47
36W	3500	39,1W	2905	44°	QS42	01-43-47
36W	3500	39,1W	2940	58°	QS43	01-43-47
3000K - CRI 90 - DALI						
36W	3150	39,1W	2489	26°	QS44	01-43-47
36W	3150	39,1W	2615	44°	QS45	01-43-47
36W	3150	39,1W	2646	58°	QS46	01-43-47
2700K - CRI 90 - DALI						
36W	2950	39,1W	2331	26°	QS47	01-43-47
36W	2950	39,1W	2449	44°	QS48	01-43-47
36W	2950	39,1W	2478	58°	QS49	01-43-47

Complete with power supply

**new**

source	system					
W	lm	W	lm	optic	code	colour
<b>Minimal version</b>						
<b>LED</b>						
4000K - CRI 80 - DALI						
36W	4200	39,1W	3318	26°	QS92	01-04
36W	4200	39,1W	3486	44°	QS93	01-04
36W	4200	39,1W	3528	58°	QS94	01-04
4000K - CRI 90 - DALI						
36W	3500	39,1W	2765	26°	QS95	01-04
36W	3500	39,1W	2905	44°	QS96	01-04
36W	3500	39,1W	2940	58°	QS97	01-04
3000K - CRI 90 - DALI						
36W	3150	39,1W	2489	26°	QS98	01-04
36W	3150	39,1W	2615	44°	QS99	01-04
36W	3150	39,1W	2646	58°	QT00	01-04
2700K - CRI 90 - DALI						
36W	2950	39,1W	2331	26°	QT01	01-04
36W	2950	39,1W	2449	44°	QT02	01-04
36W	2950	39,1W	2478	58°	QT03	01-04

To install minimal products a PA69 flange is required.  
Complete with power supply.

**new**

source	system					
W	lm	W	lm	optic	code	colour
<b>Palco Framer ø 37 mm</b>						
<b>LED</b>						
3000K - CRI 90 - DALI						
-	-	-	-	Framer	PB15	01-04
2700K - CRI 90 - DALI						
-	-	-	-	Framer	PB16	01-04

Complete with power supply

**new**

source	system					
W	lm	W	lm	optic	code	colour
<b>Laser adjustable ø 75 mm</b>						
<b>LED</b>						
3000K - CRI 90 - DALI						
-	-	-	-	16°	PB21	01-04
-	-	-	-	26°	PB22	01-04
2700K - CRI 90 - DALI						
-	-	-	-	16°	PB23	01-04
-	-	-	-	26°	PB24	01-04
Warm Dimming - CRI 90 - DALI						
-	-	-	-	20°	PB25	01-04
-	-	-	-	26°	PB26	01-04

Complete with power supply

**new**

source	system					
W	lm	W	lm	optic	code	colour
<b>Easy ø 96 mm</b>						
<b>LED</b>						
4000K - CRI 90 - DALI						
-	-	-	-	UGR	QX46	01-04
3000K - CRI 90 - DALI						
-	-	-	-	UGR	QW39	01-04
2700K - CRI 90 - DALI						
-	-	-	-	UGR	QW40	01-04
Tunable White - CRI 90 - DALI						
-	-	-	-	UGR	QW41	01-04
RGB - CRI 90 - DALI						
-	-	-	-	GL	QW42	01-04

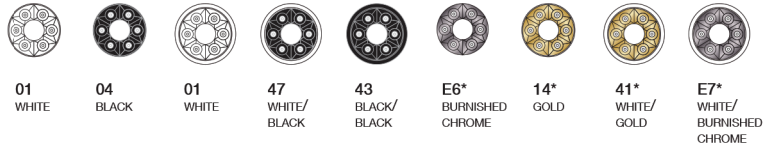
Complete with power supply. Not for QS50 - QS51 - QS52 - QS53 - QS54 - QS55

**new**

		code	colour
<b>BLE light and movement multi-sensor</b>		PB07	01-47

Compatible with the Quick BLE smart light

# Blade R



iguzzini.com code finder / download design files / save and organize favorites

\* available on request



**code colour**

**Passive speaker EN54 for recessed installation - 12 W 8 ohm / 12 W 100 V / 6 W 70 V**

**PB10 01-04**

The minimum height for the installation compartment is 200 mm



**code colour**

**Adapter for smoke sensor**

**PB11 01-04**

Can be used at a maximum ambient temperature of 25°C. The minimum required for the installation compartment is 200 mm



**code colour**

**Camera adapter**

**PB12 01-04**

Can be used at a maximum of 25°C. For compatible video cameras, check with the local Iguzzini sales team. The maximum height of the installation compartment is 200 mm



source		system		optic	code colour
W	lm	W	lm		
<b>Emergency lighting</b>					
<b>LED</b>					
5000K - CRI 80					
-	-	0,5W	200	Escape-Route	<b>PB09 01-47</b>
-	-	0,5W	220	Anti-Panic	<b>PB08 01-47</b>

The minimum height of the installation compartment is 200 mm. Operation in non-maintained (SE). 12h recharge / 3h autonomy



**code colour**

**Cover**

**PA91 01-04**

## Mounting accessories



Minimal flange

for false ceilings between 12.5 mm and 20 mm thick

**PA69 01** for recessed Ø 180 mm

## Power supply

Constant voltage driver IP20 24 Vdc 13 W - Vin 220-240 V - CL II - Dimensions 158x22x19 mm

## code colour

**PA98 00**

**new**  
Available



source		system		optic	code colour
W	lm	W	lm		
<b>Frame version</b>					
<b>LED</b>					
4000K - CRI 80 - DALI					
51W	6100	56,2W	4819	24°	<b>QS50 01-43-47</b>
51W	6100	56,2W	5063	44°	<b>QS51 01-43-47</b>
3000K - CRI 90 - DALI					
51W	4600	56,2W	3634	24°	<b>QS52 01-43-47</b>
51W	4600	56,2W	3818	44°	<b>QS53 01-43-47</b>
2700K - CRI 90 - DALI					
51W	4300	56,2W	3397	24°	<b>QS54 01-43-47</b>
51W	4300	56,2W	3569	44°	<b>QS55 01-43-47</b>

Complete with power supply



**code colour**

**Cover**

**PA90 01-04**

