

m o o o i[®]



BFF Sofa

"BFF, a sofa that is your friend, that embraces you if you are tired, that cheers with you when your national soccer team scores a goal, that makes your mother-in-law feel welcome, that comforts you when you receive bad news, that stays with you also when you move cities, that never skips your birthdays, that never talks too loud, yet supports you if you do. A true Best Friend Forever." (Marcel Wanders). Soft, yet a firm modular sofa system, the BFF Sofa is inspired by the capitone technique, loosely based on the chesterfield style, with its characteristic deep buttoned upholstery. The technique in the BFF Sofa is blown-up, so one fragment becomes a full module. The technique is synonymous with elegance and class, and with its modern approach the modular BFF Sofa is a timeless eyecatcher with 17 different modules, a footstool and a wide range of fabrics to choose from. Design your own BFF Sofa with our online configurator on [mooodi.com/BFF](https://www.mooodi.com/BFF).

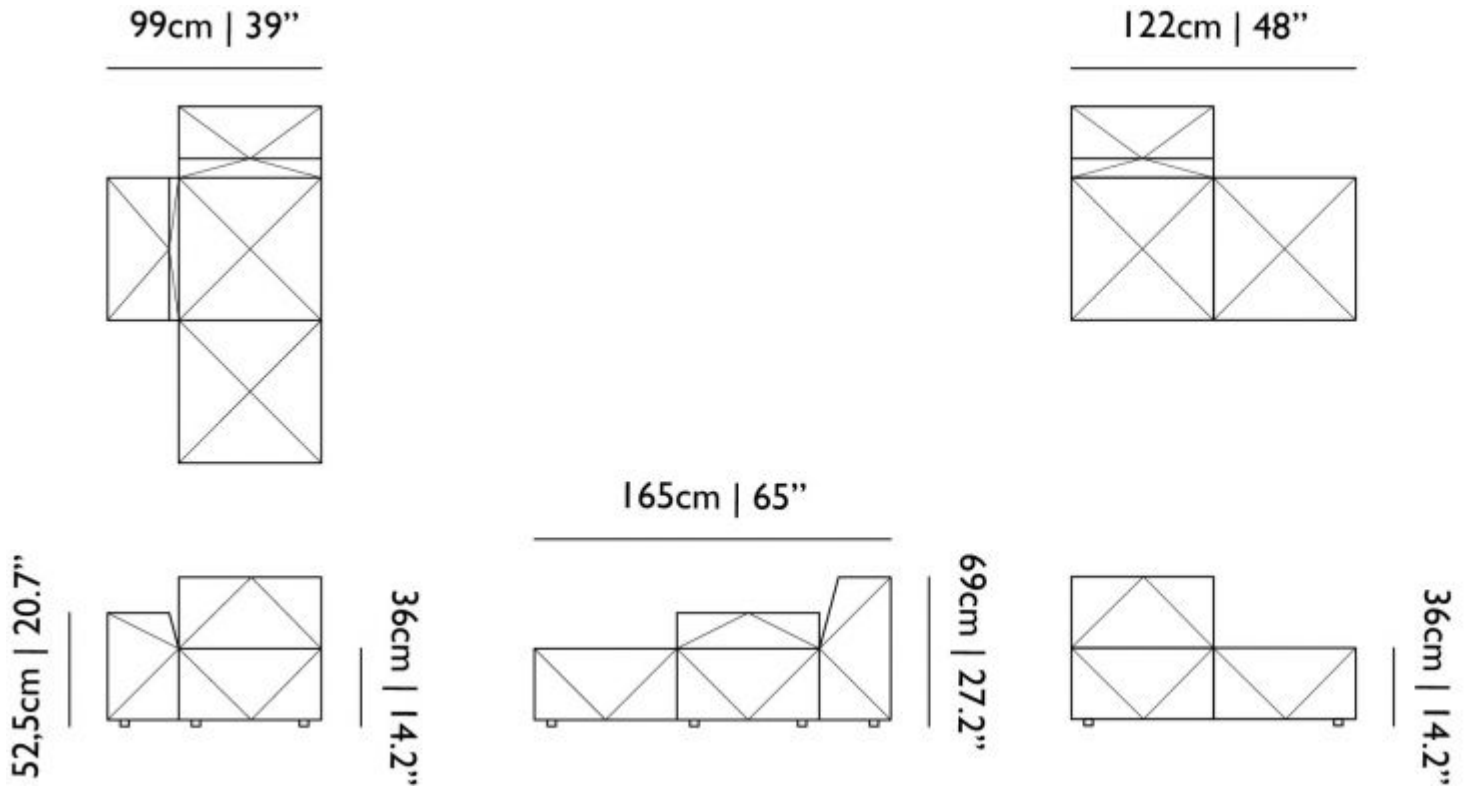
Designer

Marcel Wanders

Year of design

2019

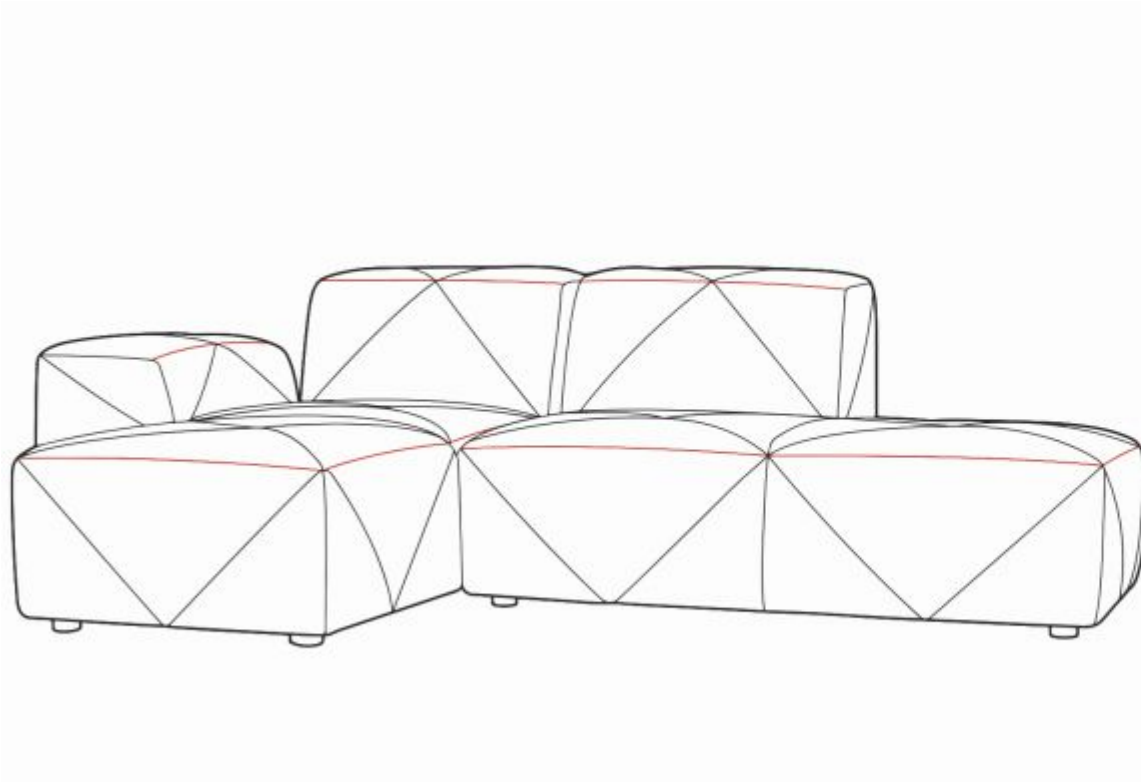
Dimensions below are for BFF Sofa Setting on this page



Shown dimensions correspond to the configuration as seen on the right side of this page. The BFF Sofa system consists of 17 modules and a footstool and can be personally designed via our [online configurator](#).

m o o o i[®]

BFF leather stitching information



The BFF Sofa upholstered in leather has additional stitching. See the coloured lines in the image above for an overview.

m o o o i[®]

Vesper

composition

10% CO, 40% L, 10% PA, 10% PL, 30% VI

abrasion

40.000 Martindale rubs, EN ISO 12947

lightfastness

Note 5, EN ISO 105-B02

firetest

EN 1021-1/2

US. Cal. Bull. 117-2013

Upon request, with treatment:

BS5852 part1

BS5852 crib5



Vesper
Aluminium



Vesper
Brass



Vesper
Bronze



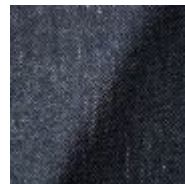
Vesper
Carbon



Vesper
Nickel



Vesper
Silver



Vesper
Steel



Vesper
Titan

Macchedil, Sottile

composition

49% vi, 24% pl, 21% li, 6% co

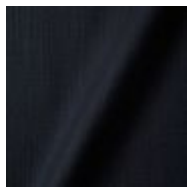
abrasion

30.000 martindale

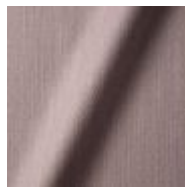
lightfastness 4

firetest

EN1021 I&2



Macchedil Sottile
Black indigo



Macchedil Sottile
Pinkish



Macchedil Sottile
Off white



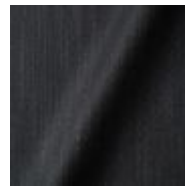
Macchedil So
Light grey



Macchedil Sottile
Light brown



Macchedil Sottile
Grey grey



Macchedil Sottile
Anthracite



Macchedil So
Blue grey



Macchedil Sottile
Cappuccino



Macchedil Sottile
Deep blue

Macchedil, Grezzo

composition

47% co, 20% vi, 18% pi, 8% li, 5% pc, 2% af

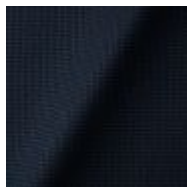
abrasion

18.000 martindale

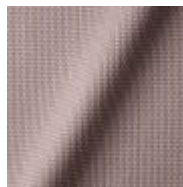
lightfastness 4

firetest

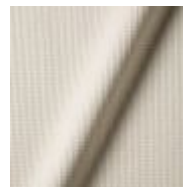
EN1021 I&2



Macchedil Grezzo
Black indigo



Macchedil Grezzo
Pinkish



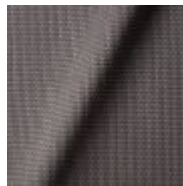
Macchedil Grezzo
Off white



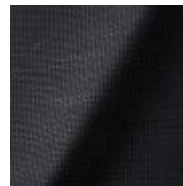
Macchedil Gr
Light grey



Macchedil Grezzo
Light brown



Macchedil Grezzo
Grey grey



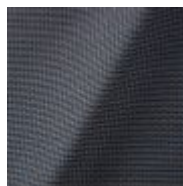
Macchedil Grezzo
Anthracite



Macchedil Gr
Blue grey



Macchedil Grezzo
Cappuccino



Macchedil Grezzo
Deepblue

Solis

composition

2% PA 3% PC 30% PL 65% WO

abrasion

40.000 Martindale rubs, EN ISO 12947

lightfastness

Note 5, EN ISO 105-B02

firetest

EN 1021-1/2

US. Cal. Bull. 117-2013

Upon request, with treatment:

BS5852 part 1

BS5852 crib 5



Solis
Crust



Solis
Dawn



Solis
Fog



Solis
Gray



Solis
Paper



Solis
Rain



Solis
Spencer



Solis
Suit



Solis
Sunset

m o o o i[®]

Bouclé

composition

43% co, 28% pan, 14% pa, 12% vi, 3% pl

abrasion

20.000> martindale

lightfastness 4

firetest

EN1021 I&2



Bouclé
Black white



Bouclé
Rainbow



Bouclé
Brown



Bouclé
Blue

Jacquard andaz

composition:

34% cotton - 30% viscose - 24% linen - 12% polyamide

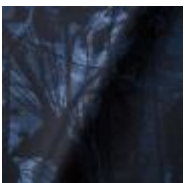
abrasion:

25000 martindale

lightfastness 4-5

firetest:

BS EN 1021 I&2



Jacquard
Andaz

m o o o i[®]

Jaquard Fresco

composition

40% vi ,36% co, 14% pl, 10% li

abrasion

20.000> martindale

lightfastness 4-5

firetest

EN1021 I&2



Jaquard
Fresco

Jacquard Old Black & Blue

composition

52% vi, 38% co, 10% li

abrasion

20.000> martindale

lightfastness 4-5

firetest

EN1021 I&2



Jaquard
Old Blue



Jaquard
Old Black

Justo

composition

15% CO, 35% PC, 10% PL, 40% VI

abrasion

50.000 Martindale rubs, EN ISO 12947

lightfastness

Note 5, EN ISO 105-B02

fire test

EN 1021-1/2

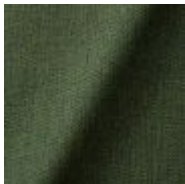
US. Cal. Bull. 117-2013

NFPA 260

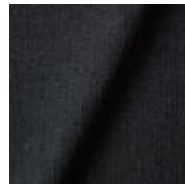
Upon request, with treatment:

BS5852 part I

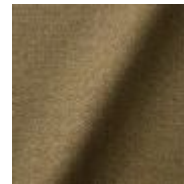
BS5852 crib5



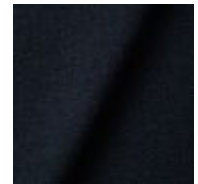
Justo
Alge



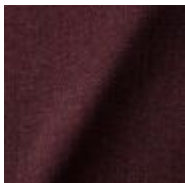
Justo
Bazalt



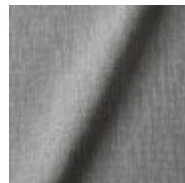
Justo
Bred



Justo
Flod



Justo
Hinde



Justo
Lyse



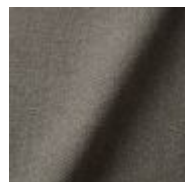
Justo
Muse



Justo
Nat



Justo
Sennep



Justo
Sten

m o o o i[®]

Liscio

composition

35% WO / 35% CV / 21% CO / 9% PA

abrasion

30.000 Martindale

lightfastness

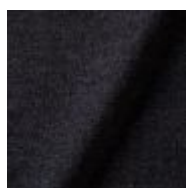
4-6

firetest

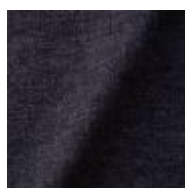
US. Cal. Bull. 117-2013

Upon request, with treatment:

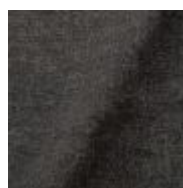
BS5852 part I



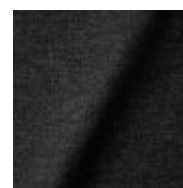
Liscio
**Grigio Blu
Scuro**



Liscio
Grigio Blu



Liscio
Grigio Scuro



Liscio
Muscio Scuro



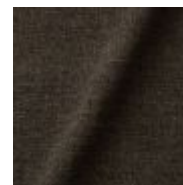
Liscio
Muscio



Liscio
Argento



Liscio
Nebbia



Liscio
Pietra



Liscio
Perla



Liscio
Latte Scuro



Liscio
Latte

m o o o i[®]

Twill

composition

72% wo, 8% pa, 20% pl

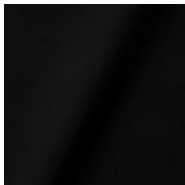
abrasion

75.000 martindale

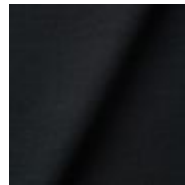
lightfastness 5

firetest

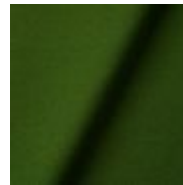
EN1021 I&2



Twill
Caviar



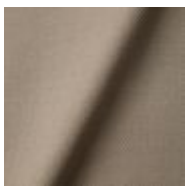
Twill
Graphite



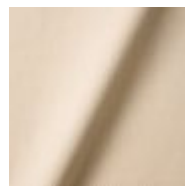
Twill
Grass



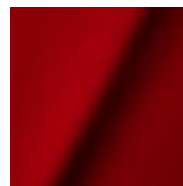
Twill
Grey



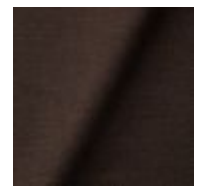
Twill
Linen



Twill
Natural



Twill
Passion



Twill
Walnut

Twill Melange

composition

60% WO / 20% PES / 20% PA

abrasion

80.000 martindale

lightfastness 6-7

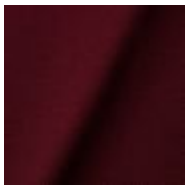
firetest

EN1021-1/2

US. Cal. Bull. 117-2013

BS5852 part I

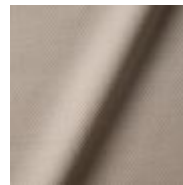
DIN 4102-B2



Twill Melange
Chili



Twill Melange
Dust



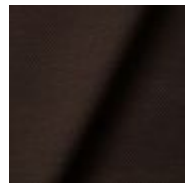
Twill Melange
Flour



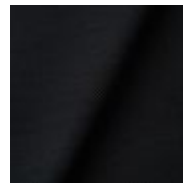
Twill Melange
Lagoon



Twill Melange
Lavender



Twill Melange
Peat



Twill Melange
Slate



Twill Melange
Twig

m o o o i[®]

Bearded leopard Jacquard

composition

77% VI / 15% PES / 7% CO / 1% PA

abrasion

15.000 Martindale rubs, EN ISO 12947

lightfastness

Note 4-6, EN ISO 105-B02

firetest

EN1021-1/2

Upon request and with treatment:

BS5852 part I



Blushing Sloth Woolly Mohair

composition

85% WV / 15% WM

abrasion

15.000 Martindale rubs, EN ISO 12947

lightfastness

Note 4-6, EN ISO 105-B02

firetest

EN1021-1/2

BS5852 part I

m o o o i[®]



Extinct

Animals

Fabric

Collection

Blushing Sloth

Woolly Mohair

Blushing Sloth Melange Mohair

composition

29% LANA / 24% LANA WM / 24% PES / 15% PA / 8% CO

abrasion

40.000 Martindale rubs, EN ISO 12947

lightfastness

Note 4-6, EN ISO 105-B02



m o o o i[®]

Dodo Pavone

composition

12% CO 88% PL

abrasion

40.000 Martindale rubs, EN ISO 12947

lightfastness

Note 5, EN ISO 105-B02

firetest

US. Cal. Bull. 117-2013

Upon request, with treatment:

BS5852 part I



The Silent Bison Velvet

composition

100% CO

abrasion

30.000 Martindale rubs, EN ISO 12947

lightfastness

Note 4-6, EN ISO 105-B02



m o o o i[®]

Calligraphy Bird Jacquard

composition

64% VI, 21% PES, 15% CO

abrasion

50.000 Martindale rubs, EN ISO 12947

lightfastness

Note 4-6, EN ISO 105-B02

firetest

Upon request, with treatment;
BS5852 part I



Extinct Animals
Fabric Collection
Calligraphy Bird
Jacquard

Flying Coral Fish Scaled



**Extinct
Animals
Fabric
Collection**
Flying Coral Fish
Scaled

Type
Pure aniline,
nubuck finish

m o o o i[®]

Dwarf Rhino Buffed

composition

100% steer

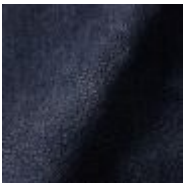
Type

Pure aniline, nubuck finish



Extinct Animals
Fabric Collection
Dwarf Rhino
Buffed

Dwarf Rhino Crackle



**Extinct
Animals
Fabric
Collection**
Dwarf Rhino
Crackle

Armoured Boar Crackle

composition

100% cow hide

Type of leather

Pure aniline, nubuck finish



Kvadrat Fabrics

Kvadrat Fabrics

Selected Moooi products can be upholstered with a collection of Kvadrat fabrics. Kvadrat designs high-quality upholstery, in an extensive range of colours and textures.

Go to our Kvadrat fabrics page for a full overview of all fabric families you can choose from.



Image not found or type unknown