

m o o o i<sup>®</sup>



## Bart Sofa & Armchair

---

The Bart Family collection of sofa`s, armchairs, daybed and canapés is originally inspired by the rounded shapes & sumptuous glory of 18th century Rococo. Moooi works / Bart Schilder reinterprets such splendor, adding genuine pleasure and softness to the classic silhouette by using modern day skills and a timeless eye for detail.

---

<b>Designer</b>	Moooi Works
<b>Year of design</b>	2012
<b>Material</b>	Wooden frame covered in foam and dacron, the seat cushion is made in foam.

---

---

## detailing

Bart sofa is produced with removable covers for the seat cushion and all pillows (please check per category).

There are 3 compositions available; SOFA (low seat), CANAPE (active seat) and DAYBED.

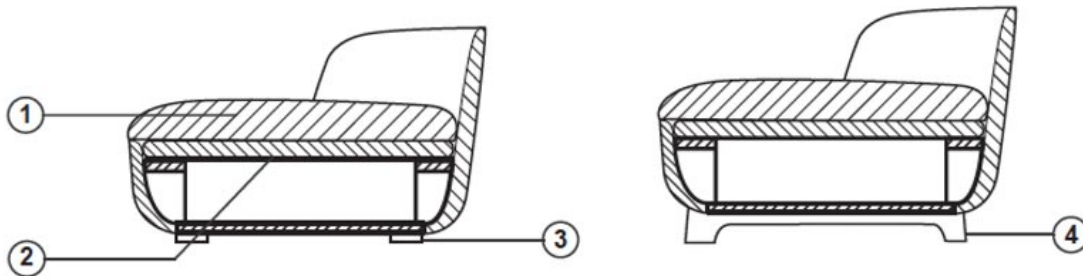
The Daybed comes with a set of pillows in matching upholstery.

---

## technical

The Bart sofa is constructed from a wood frame covered in foam and dacron, the seat cushion is made in foam and removable.

Bart sofa is produced with removable covers for the seat cushion and all pillows (please check per category).



1. Multiple density fire retardant foam composition + dacron on wood frame
2. Elastic straps fixed on the wood base
3. Plastic glider feet
4. Solid wood legs (for Canape)

## upholstery categories

Macchedil Sottile  
Macchedil Grezzo

Macchedil Sottile/Grezzo Composition

Faux

Bouclé

Twill

Summit Uni

Twill/Summit Uni Composition

Velour

Arredo Leather

Cervino Leather

## Macchedil, Sottile

### composition

49% vi, 24% pl, 21% li, 6% co

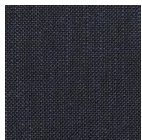
### abrasion

30.000 martindale

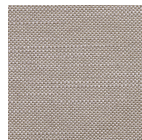
### lightfastness4

### firetest

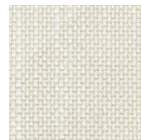
FR BS5852 0/1  
EN1021 I&2



Macchedil Sottile  
**Black indigo**



Macchedil Sottile  
**Pinkish**



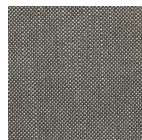
Macchedil Sottile  
**Off white**



Macchedil Sottile  
**Light grey**



Macchedil Sottile  
**Light brown**



Macchedil Sottile  
**Grey grey**



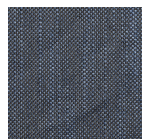
Macchedil Sottile  
**Anthracite**



Macchedil Sottile  
**Blue grey**



Macchedil Sottile  
**Cappucino**



Macchedil Sottile  
**Deep blue**

## Macchedil, Grezzo

### composition

47% co, 20% vi, 18% pi, 8% li, 5% pc, 2% af

### abrasion

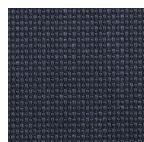
18.000 martindale

### lightfastness4

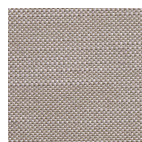
### firetest

FR BS5852 0/1

EN1021 I&2



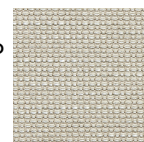
Macchedil Grezzo  
**Black indigo**



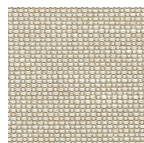
Macchedil Grezzo  
**Pinkish**



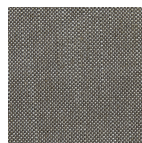
Macchedil Grezzo  
**Offwhite**



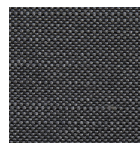
Macchedil Grezzo  
**Light grey**



Macchedil Grezzo  
**Light brown**



Macchedil Grezzo  
**Grey grey**



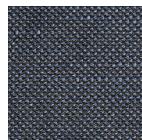
Macchedil Grezzo  
**Anthracite**



Macchedil Grezzo  
**Blue grey**



Macchedil Grezzo  
**Cappuchino**



Macchedil Grezzo  
**Deepblue**

## Faux

### composition

100% pl

### abrasion

50.000 martindale

### lightfastness4

### firetest

FR BS5852 0/1

EN1021 I&2



Faux  
**Black**



Faux  
**Brown**

---

## Bouclé

### composition

43% co, 28% pan, 14% pa, 12% vj 3% pl

### abrasion

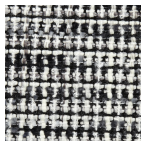
20.000> martindale

### lightfastness 4

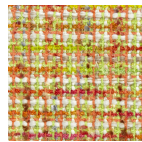
### firetest

FR BS5852 0/1

EN1021 I&2



Bouclé  
**Black white**



Bouclé  
**Rainbow**

---

## Twill

### composition

72% wo, 8% pa, 20% pl

### abrasion

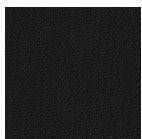
75.000 martindale

### lightfastness 5

### firetest

FR BS5852 0/1

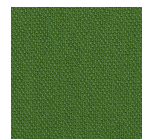
EN1021 I&2



Twill  
**Caviar**



Twill  
**Graphite**



Twill  
**Grass**



Twill  
**Light grey**



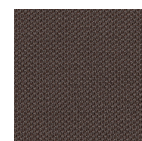
Twill  
**Linen**



Twill  
**Natural**



Twill  
**Passion**



Twill  
**Walnut**

## Summit UNI

### composition

22% wo, 2% pa, 14% pl, 62% pl filling

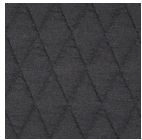
### abrasion

24.000 martindale

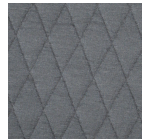
### lightfastness 5

### firetest

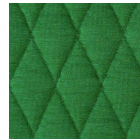
FR BS5852 0/1  
EN1021 I&2



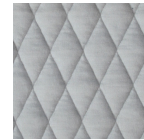
Summit UNI  
**Caviar**



Summit UNI  
**Graphite**



Summit UNI  
**Grass**



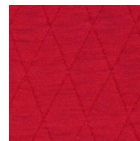
Summit UNI  
**Grey**



Summit UNI  
**Linen**



Summit UNI  
**Natural**



Summit UNI  
**Passion**



Summit UNI  
**Walnut**

## Velour

### composition

77% wo, 8% pa, 15% pl

### abrasion

100.000 martindale

### lightfastness 7

### firetest

FR BS5852 0/1  
EN1021 I&2



Velour  
**Coral**



Velour  
**Mineral**



Velour  
**Moss**

---

## Arredo Leather

### composition

100% semi aniline leather

### firetest

FR BS5852 0/1

EN1021 I&2



Arredo Leather  
**Black**



Arredo Leather  
**Brown**



Arredo Leather  
**White**

---

## Cervino Leather

### composition

100% aniline leather

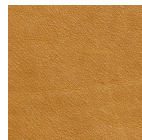
### firetest

FR BS5852 0/1

EN1021 I&2



Cervino Leather  
**Anthracite**



Cervino Leather  
**Cognac**

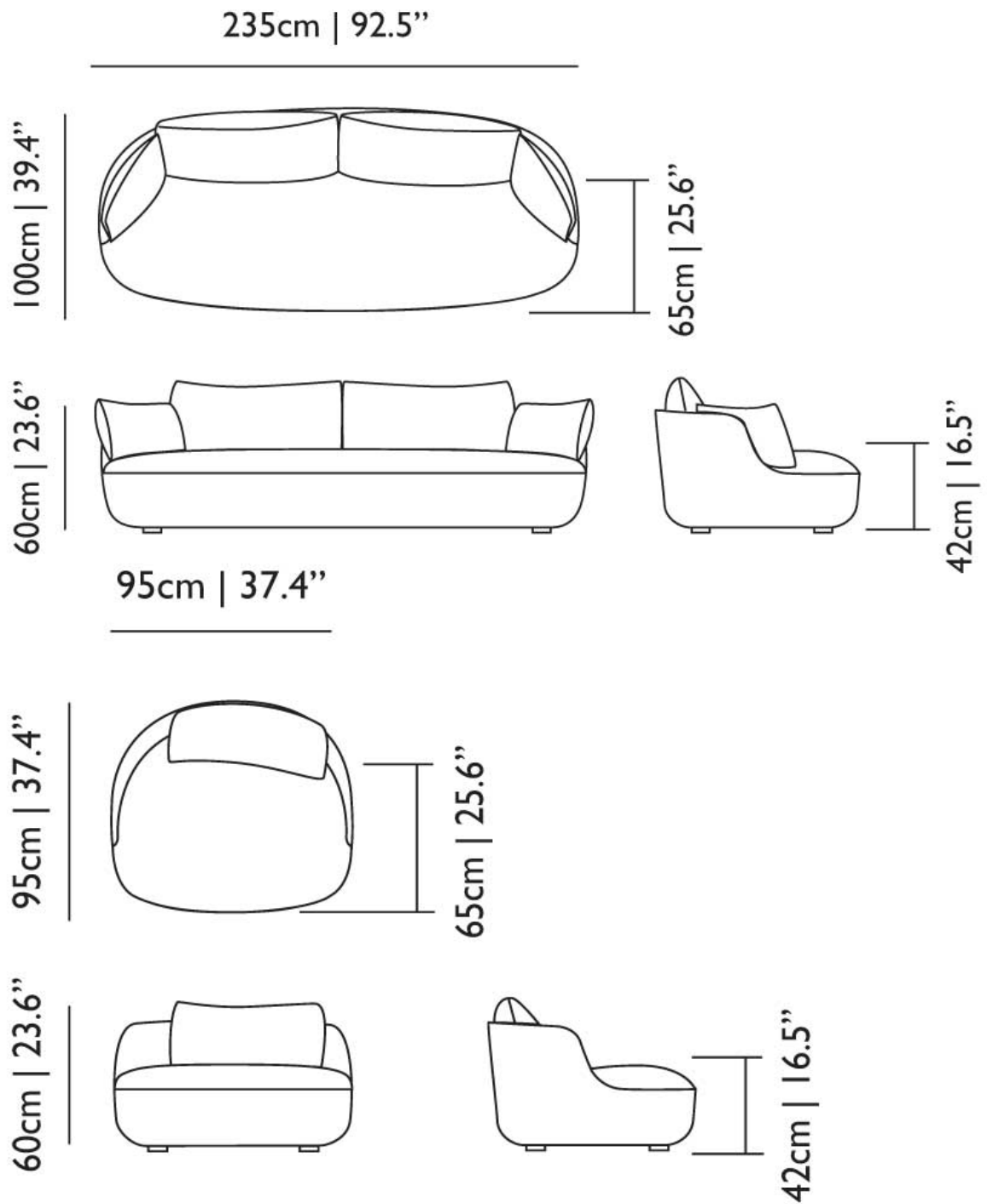


Cervino Leather  
**Mud**



Cervino Leather  
**Pure**

## dimensions Bart Sofa & Bart Armchair





## Dimensions Bart Daybed

