

MOBIL LIFT

#56

INSTRUCTION MANUAL

National
Carpet Equipment, Inc.

6801 WINNETKA AVENUE N. • MINNEAPOLIS, MN 55428 • U.S.A.
WATTS 800-245-0267 • 763-535-8206 • FAX 763-535-8255 • FAX 800-648-7124
WEB SITE: <http://www.nationalequipment.com> • E-MAIL: info@nationalequipment.com

#56 MOBIL LIFT OPERATING INSTRUCTIONS

National
Carpet Equipment, Inc.

MACHINE ASSEMBLY PROCEDURE

- Tools Needed:**
- Two (2) 9/16" Wrench for all pipe bolts
 - One (1) 3/8" Wrench to tighten electrical switch bolt

- Step #1** View Instructional Video Tape.
- Step #2** Lay motor end, (section A), on its side motor touching floor and attach casters, pipe caddy and pad install on leg that is now up.
- Step #3** Insert 4" diameter 2 hole beam, (section B), to motor end. Insert and tighten bolt and nut.
- Step #4** Insert inside adjusting 3-3/4" diameter tube, (section C), into section B so long end with adjustment holes will extend into the 4" diameter hole tube, (section D), for adjustment for 15 foot rolls. Insert and tighten bolt and nut.
- Step #5** Insert 4" diameter 5 hole beam tube, (section D), over 3-3/4" diameter extension tube, (section C), slide all the way over all the way to touch section B tube. This will be the standard 12 foot roll setting.
- Step #6** Insert beam pulley, (section E), with rounded end facing back of machine over end of 4" tube. You may slide this forward on tube and insert a loose bolt so it will not slide off when you tip up the front or motor end on its wheels.
- Step #7** The machine should now be completely assembled except for the back end, (section F). With two or three men stand the motor end on its wheels, leave the center pipe section rest on the floor. When you have done this the machine will be in a tripod position.
- Step #8** Attach casters to Section F, then with a man raising the 4" diameter beam tube, (section D), up, have a couple men pick up the back, section F, and insert to section D. Line up holes, insert and tighten bolt and nut. Slide beam pulley, (section E), to the back end and insert bolt and nut in front of it so it cannot slide forward when lifting rolls.

#56 MOBIL LIFT OPERATING INSTRUCTIONS

National
Carpet Equipment, Inc.

MACHINE ASSEMBLY continued...

- Step #9** Tighten all bolts on machine including ones on motor and pillow block bearing so they are good and tight; they may have loosened during transporting.
- Step #10** Change solid breather plug installing vent plug. Keep solid breather plug for future use if machine is to be moved so oil will not leak out when machine is tipped.
- Step #11** Adjust and tighten nut on reversing switch bracket, (Part G). Proceed with nylon rope assembly as illustrated on following sheet.

For unloading truck, strip entire rope free of machine running rope straight through un-motorized end not through pulley. After lassoing roll it can be pulled directly to motor end of machine.

Let machine raise end of roll so a dolly or cart can be placed underneath and pushed aside until all rolls are unloaded. Use back of truck or anchor against door frame to give pulling leverage when unloading from truck.

NOTICE: Bending of lift pipes is caused by improper usage. Pulley must be next to carpet roll, all sections interlocked. We will not replace bent lift pipes when misused. See instructions.

Caution Points:

Due to our lack of control of the many conditions and techniques used in the field, National will not be held responsible for injury to anyone or damage to any object, resulting through use of this product regardless of its age or condition or the manner in which it is used.

1. If lift is to be used in unheated building – under 40°F – special grease must be used in gear box and gear box kept warm with electric lamp or electric heating cord wrapped around gear-box.
2. Do not stand under lifted carpet.
3. When unloading protect yourself in case rope should slip or break.
4. When rolling machine do not roll over electrical extension cord or loose objects in path of wheels.
5. Never raise carpet too high. Do not let red lifting collar jam into upper pulleys or raise carpet roll into the main cross beam of machine.
6. Never pull carpet from machine. Always move machine to spin carpet from lift pipes.
7. Do not reroll slack by spinning roll and dragging carpet across rolls or floor. When slack needs to be rerolled, move roll to lowest possible position and move machine back over slack. Reroll a small amount, then move machine again, and repeat the process until slack is rolled up. Do not roll out excess carpet greater than 5ft to be cut.

#56 MOBIL LIFT OPERATING INSTRUCTIONS

National
Carpet Equipment, Inc.

MAINTENANCE

WARNING: MAKE CERTAIN THAT THE POWER SUPPLY IS DISCONNECTED BEFORE ATTEMPTING TO SERVICE OR REMOVE ANY COMPONENTS! IF THE POWER DISCONNECT POINT IS OUT OF SIGHT, LOCK IT IN THE OPEN POSITION AND TAG IT TO PREVENT UNEXPECTED APPLICATION OF POWER.

CLEANING

Properly selected and installed electric motors are capable of operating for long periods with minimal maintenance. Periodically clean dirt accumulations from open-type motors, especially in and around vent openings, preferably by vacuuming (avoids imbedding dirt in windows). At the same time, check that electrical connections are tight.

LUBRICATION

Figure 3 illustrates the correct locations for the oil fill/vent plug, the oil level plug, and the oil drain plug on the reducer, for each of the two correct reducer mounting positions.

CAUTION: If oil level is too low, reducer bearings and gears will not get enough lubrication. Too much oil in the reducer may cause oil to leak from the air vent, or may cause the oil to churn and foam, which may cause overheating. Either too much or too little oil can cause reducer bearing and gear damage.

For new reducers, change the oil 120 hours after the reducer starts operating (based on 8 hours per day operation). After the first change, change oil every 2,000 operating hours, or every six months, whichever occurs first.

Use Mobil SHC® 634 gear lubricant or a similar synthetic gear oil. ISO viscosity grade 460.
Available from National.

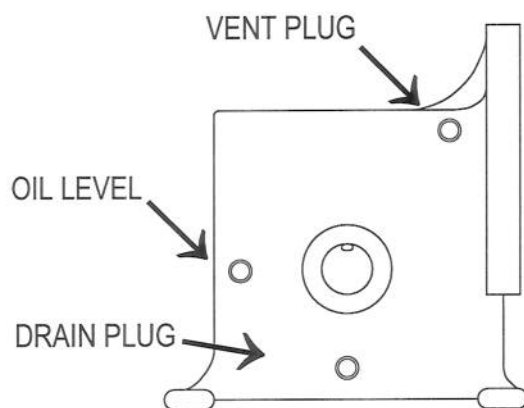


Figure 3 – Reducer Oil Plug Locations

CHANGING OIL:

Remove both the vent plug and oil level plug. Place oil in the hole where the vent plug was and keep putting oil in until it starts to come out of the hole where the oil level plug was.

CHANGING THE OUTPUT OIL SEAL:

Remove the rope shaft and the gear reducer from the unit. Place some form of support, (2 x 4 etc.), under the gear reducer shaft to keep it from bending. Drive out the gear reducer shaft pin. Pick out the old seal. Clean out the area where the old seal was. Install the new seal, carefully press it in. Install drive pin again. Put some "Locktight" around the middle of the pin and carefully press into the shaft. If you find that the pin is loose, you may have

to put some burrs on the pin or may need a new pin. Depending on how much oil leaked, please check to see if your unit needs more oil. Please add oil if needed. Install the rope shaft.

#56 MOBIL LIFT OPERATING INSTRUCTIONS

National
Carpet Equipment, Inc.

PREVENTIVE MAINTENANCE

1. Inspect for damage on all exposed power cords and switches. Worn or broken cords and switches could result in electrical shock.
2. Oil level in gear box should be checked once a year. Remove level screw on side of gearbox, add if needed. (Amoco EP1 or like).
3. Pull rope should be replaced when excessive wear (reduction of diameter) or cuts into your rope are visible, use #56-1 Replacement Rope.
(WARNING – do not use CABLE of any type).
4. Drive shaft and pillow block bearing should be greased for free shaft movement.
5. Prior to use pulley's should be examined. Check for free movement of pulley wheel. Check pulley frame making sure there is no damage to frame or to the red non-slip coating.
6. Always read operating instructions before operating Mobil Lift for the first time.

Due to our lack of control of the many installation conditions and techniques used in the field, National will not be held responsible for injury to anyone or damage to carpeting or any other object, resulting through use of the Mobil Lift regardless of its age or condition or the manner in which it is used.

#56 MOBIL LIFT OPERATING INSTRUCTIONS

National
Carpet Equipment, Inc.

TROUBLESHOOTING CHART

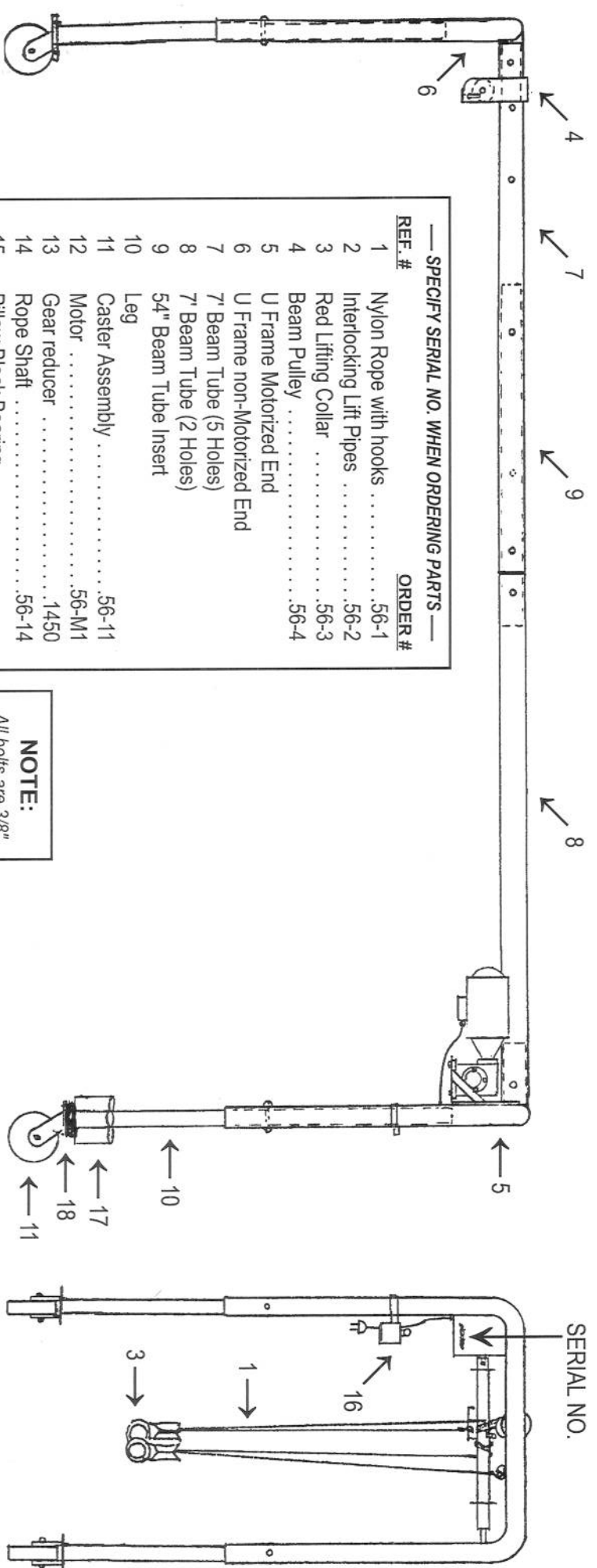
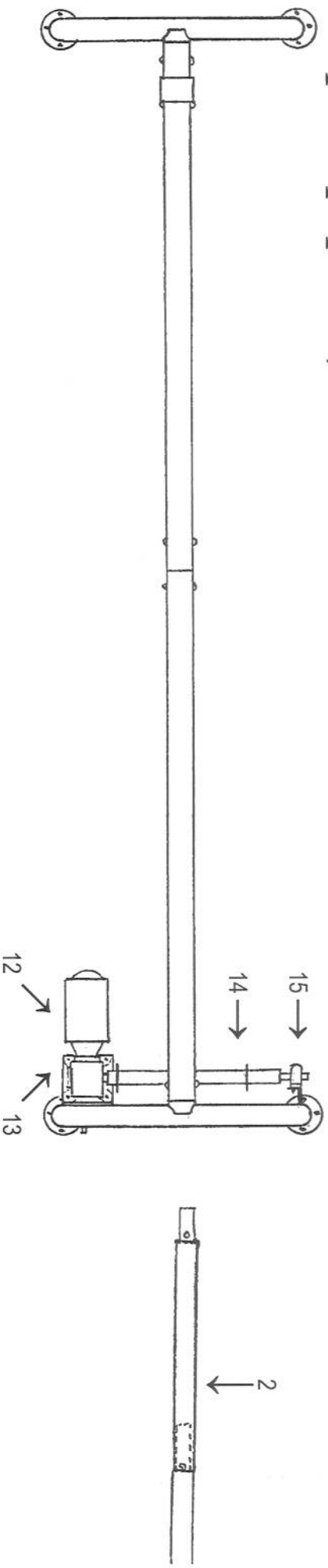
SYMPTOM	POSSIBLE CAUSE(S)	CORRECTIVE ACTION
Unit fails to operate	<ol style="list-style-type: none"> 1. Blown fuse or open circuit breaker 2. No power 3. Defective motor 4. Excessive load 	<ol style="list-style-type: none"> 1. Replace fuse or reset circuit breaker 2. Check power source 3. Repair or replace 4. Reduce load
Input motor runs, but speed reducer output shaft doesn't turn	<ol style="list-style-type: none"> 1. No input key 2. Defective gear(s) 	<ol style="list-style-type: none"> 1. Install key (see Installation) 2. Check and replace if necessary
Intermittent rotation of output shafts	<ol style="list-style-type: none"> 1. Poor electrical connection 2. Damaged gear assembly, possibly caused by shock load 	<ol style="list-style-type: none"> 1. Check connection 2. Replace gear and, if possible, avoid shock load
Excessive noise	<ol style="list-style-type: none"> 1. Bearings worn 2. Belt or chain too tight 3. Weight overload – exceeds rating and causes bearing wear 4. Insufficient lubrication 	<ol style="list-style-type: none"> 1. Replace 2. Adjust tension 3. Correct load and/or replace bearing 4. Check oil level
Oil leak	<ol style="list-style-type: none"> 1. Vent plug not installed 2. Gasket broken or not sealed 3. Damaged or worn seal 4. Too much oil 	<ol style="list-style-type: none"> 1. Install vent plug 2. Replace or reseal gasket 3. Replace seal 4. Check oil level

National

Carpet Equipment, Inc.

MOBIL LIFT PARTS LIST

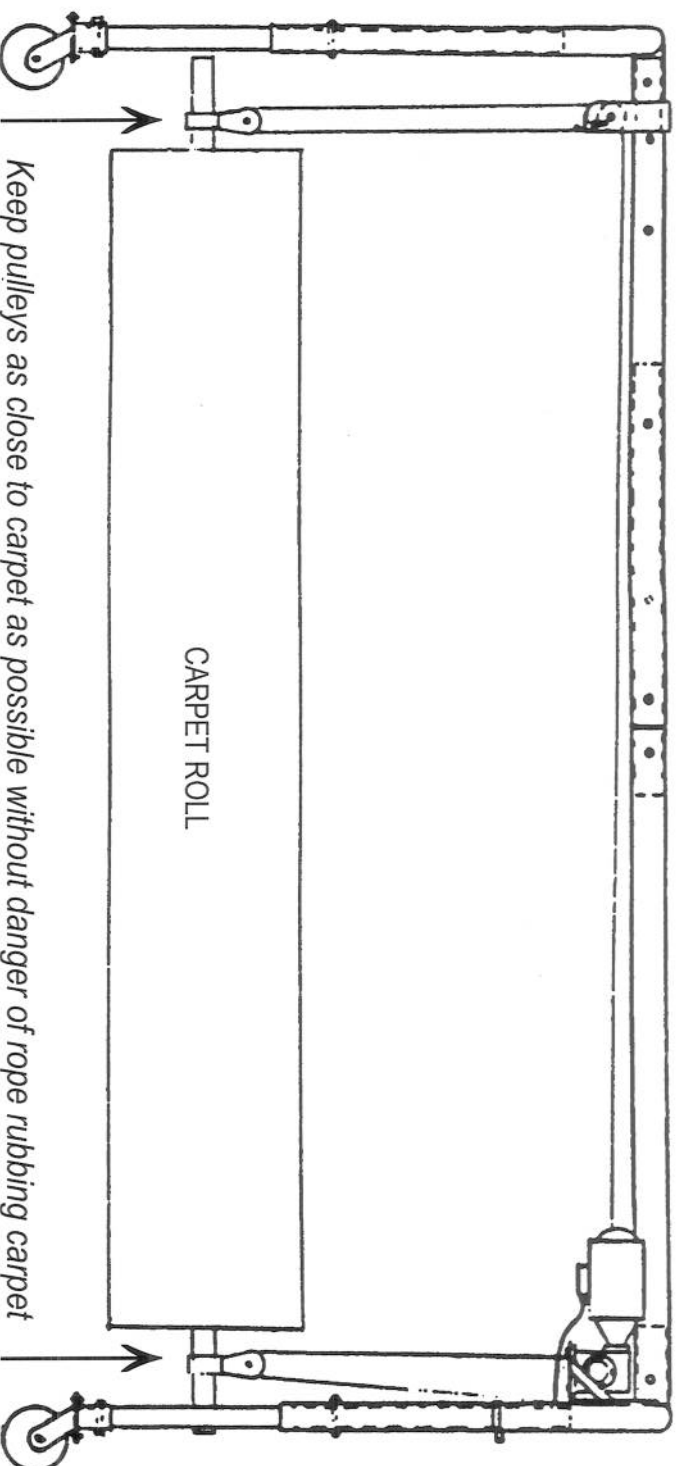
#56



— SPECIFY SERIAL NO. WHEN ORDERING PARTS —

REF. #	ORDER #
1	.56-1
2	.56-2
3	.56-3
4	.56-4
5	
6	
7	
8	
9	
10	
11	.56-11
12	.56-M1
13	.1450
14	.56-14
15	
16	.56-S
17	.56-17
18	.56-18

NOTE:
All bolts are 3/8"
National Coarse and
are available at local
hardware stores.



Properly used, the High Strength Steel Sectional Lift Pole will easily carry the full rated roll load of one ton. Poles bent through abuse and misuse can be replaced, but will not be covered by warranty. Please read and follow these instructions:

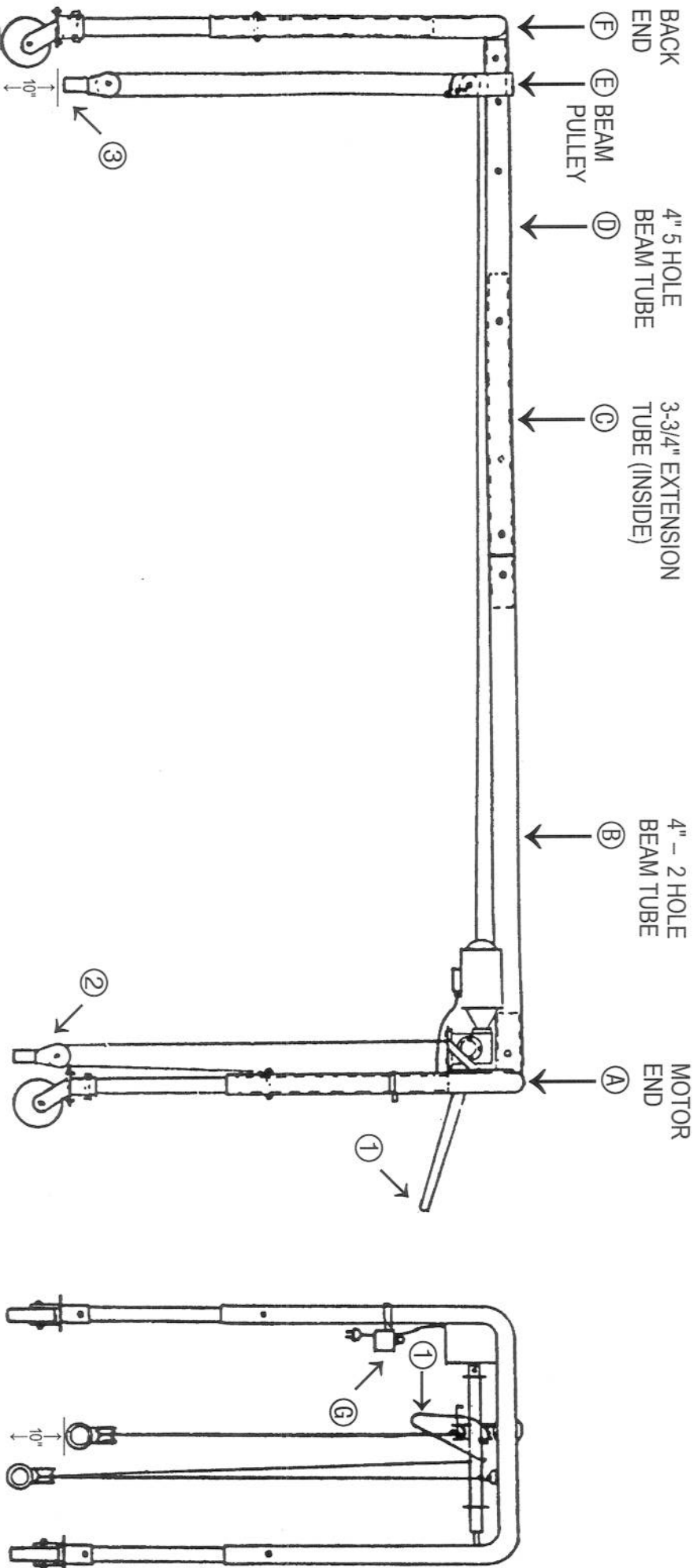
- ① Be sure to fully interlock each section as it is slipped into the carpet roll.
- ② Keep turning the pole sections to the right as they are pushed in or pulled out – this will keep them from becoming unhooked.
- ③ Use the four sections with connectors for 12' carpet – add the plain section for 15' rolls.
- ④ With the pole extending nearly the same distance out of each end of the roll, place the pulleys close to the carpet, (see above).
- ⑤ Never lift 12' rolls with five pole sections and beam pulley set for 15' rolls. Extra beam pulley with 3' rope and hook available for quick change.
- ⑥ When machine is used in the extended 12' position – (one foot longer) – always move the beam pulley one foot closer to motor end.

National

Carpet Equipment, Inc.

ASSEMBLY DIAGRAM & NYLON ROPE INSTRUCTIONS

#56 MOBIL LIFT



String the nylon rope as illustrated above with the rope from both pulleys coming over the drive shaft as shown in the end view. Control the rope at point ① and adjust so motor end pulley ② touches the floor and other pulley ③ is 10" from floor. This compensates for the extra stretch in the longer line. Now mark point ① with a dark marking pen. Put the marked spot at the hook and wind.

National

Carpet Equipment I

SWITCH WIRING #56 MOBIL LIFT

