

3477

HEPA DUST COLLECTOR INSTRUCTION MANUAL



110413

 Read Manual Before Operating Machine

Table of Contents

Table of Contents	3
Features and Specifications.....	4
Safety.....	5-9
General Rules for Safe Operation	5-6
Grounding.....	7
Extension Cords	8
Guidelines for Using Extension Cords.....	8
General Safety.....	8-9
Service.....	9
Machine Operation	10-11
Unpacking.....	10
Function.....	10
Machine Use.....	10
Replacing Bag	10
Filter Change	11
Purge Vac	11
Machine Maintenance	12-13
Maintaining Equipment	12
Cleaning	12
Repairs	12
Service.....	13
Troubleshooting Guide	14
Parts List and Diagrams	15-17
Internal Parts	15
External Parts	16
Cover Parts.....	17
Accessories	18-19
Guarantee.....	20

Features and Specifications



FEATURES

Manual Jet Pulse - efficient cleaning without opening vacuum.

Magnetic Gauge - Measures airflow through filter and indicates clean or full filter.

Bag Retaining Strap - secures bag during operation, fast and easy removal and replacement.

Filter Compartment Cap - fast and easy filter changes without tools.

On-Board Wand Storage - easy access to wand and floor tool.

Bottom Mounted Vacuum Motor - commercial grade motor providing high cfm and waterlift for fast pick-up.

Manual Jet Pulse - efficient cleaning without opening vacuum.

Steel Clamps - secures vacuum during transport.

Longopac System - strong, safe & convenient disposal and handling of dust.

Welded Frame with 3" Casters - sturdy support & mobility even with full bags.

Steel Handle - easy mobility on congested jobsites.

10" Rear Tires - smooth, easy transport over power cords and other floor obstructions.

Product Specifications

Volt.	Vac Pressure/Hg	Max Air-flow (cfm)	Main Filter (sq. ft)	HEPA 13 Filter (sq. ft)	Filter Efficiency %@0.3 microns	Sound Level (dBA)	Length	Width	Height	Weight
220	110 Water Lift	353	32.2	27	99.95%	70	36"	24"	59.5"	158 lbs.

GENERAL RULES FOR SAFE OPERATION

READ AND SAVE ALL INSTRUCTIONS FOR FUTURE USE: Before use, be sure everyone operating this equipment reads and understands this manual as well as any labels packaged with or attached to the tool.

- 1. KNOW YOUR EQUIPMENT:** Read this manual carefully to learn equipment applications and limitations as well as potential hazards associated with this type of equipment.
- 2. GROUND YOUR TOOL:** See Grounding (page 7).
- 3. AVOID DANGEROUS ENVIRONMENTS:** Do not use in rain, damp or wet locations, or in the presence of explosive atmospheres (gaseous fumes, dust or flammable materials). Remove materials or debris that may be ignited by sparks.
- 4. KEEP WORK AREA CLEAN AND WELL LIT:** Cluttered, dark work areas invite accidents.
- 5. DO NOT USE ON STEPS**
- 6. DRESS PROPERLY:** Do not wear loose clothing.
- 7. USE SAFETY EQUIPMENT:** Everyone in the work area should wear safety goggles or glasses complying with current safety standards. Wear hearing protection during extended use and a dust mask for dusty operations.
- 8. KEEP BYSTANDERS AWAY:** Children and bystanders should be kept at a safe distance from the work area to avoid distracting the operator and contacting the tool or extension cord. Operator should be aware of who is around them and their proximity.
- 9. PROTECT OTHERS IN THE WORK AREA:** Provide barriers or shields as needed to protect others from debris.
- 10. USE PROPER ACCESSORIES:** Using accessories that are not recommended may be hazardous. Be sure accessories are properly installed and maintained.
- 11. CHECK FOR DAMAGED PARTS:** Inspect guards and other parts before use. Check for misalignment, binding of moving parts, improper mounting, broken parts and any other conditions that may affect operation. If abnormal noise or vibration occurs, turn the tool off immediately and have the problem corrected before further use. Do not use damaged equipment. Tag damaged tools "DO NOT USE" until repaired. A guard or other damaged parts should be properly repaired or replaced. For all repairs, insist on only identical National replacement parts.
- 12. REMOVE ALL ADJUSTING KEYS AND WRENCHES:** Make a habit of checking that the adjusting keys, wrenches, etc. are removed from the tool before turning it on.
- 13. GUARD AGAINST ELECTRIC SHOCK:** Prevent body contact with grounded surfaces such as pipes, radiators, ranges and refrigerators. Before use always check the work area for hidden wires or pipes. Use a Ground Fault Circuit Interrupter (GFCI) to reduce shock hazards.
- 14. AVOID ACCIDENTAL STARTING:** Be sure equipment is turned off before plugging it in. Do not use a tool if the power switch does not turn the tool on and off.
- 15. DO NOT ABUSE CORD:** Never unplug by pulling the cord from the outlet. Pull plug rather than cord to reduce the risk of damage. Keep the cord away from heat, oil, sharp objects, cutting edges and moving parts.
- 16. STAY ALERT:** Watch what you are doing, and use common sense. Do not use when you are tired, distracted or under the influence of drugs, alcohol or any medication causing decreased control.
- 17. STARTING MACHINE:** On/off switch must be in off position before connecting to power source.
- 18. DO NOT DEFEAT OR ALTER A SWITCH OR SAFETY DEVICE**
- 19. UNPLUG EQUIPMENT:** When it is not in use, unplug tool before changing accessories or performing recommended maintenance.
- 20. MAINTAIN EQUIPMENT CAREFULLY:** Keep handles dry, clean and free from oil and grease. Periodically inspect tool cords and extension cords for damage. Have damaged parts repaired or replaced.

Safety

- 21. **STORE IDLE EQUIPMENT:** When not in use, store in a dry, secured place. Keep away from children.
- 22. **MAINTAIN LABELS AND NAMEPLATES:** These carry important information. If unreadable or missing, contact National for a free replacement.
- 23. **DO NOT DROP**



WARNING: EXPOSURE TO DUST MAY CAUSE RESPIRATORY AILMENTS. USE APPROVED NIOSH OR OSHA RESPIRATOR, SAFETY GLASSES OR FACE SHIELDS, GLOVES AND PROTECTIVE CLOTHING. PROVIDE ADEQUATE VENTILATION TO ELIMINATE DUST, OR TO MAINTAIN DUST LEVEL BELOW THE THRESHOLD LIMIT VALUE FOR NUISANCE DUST AS CLASSIFIED BY OSHA.



WARNING: ALWAYS WEAR RESPIRATOR PROTECTION, APPROPRIATE FOR THE APPLICATION, AS SPECIFIED BY OSHA REGULATIONS AND YOUR EMPLOYER. NEVER OPERATE OR MAINTAIN EQUIPMENT BEFORE READING AND UNDERSTANDING THE INSTRUCTIONS FOR OPERATION AND MAINTENANCE. OBEY ALL SAFETY SIGNS AND INSTRUCTIONS WHILE OPERATING OR MAINTAINING EQUIPMENT.



WARNING: IMPROPERLY CONNECTING THE GROUNDING WIRE CAN RESULT IN THE RISK OF ELECTRIC SHOCK. CHECK WITH A QUALIFIED ELECTRICIAN IF YOU ARE IN DOUBT AS TO WHETHER THE OUTLET IS PROPERLY GROUNDED. DO NOT MODIFY THE PLUG PROVIDED WITH THE TOOL. NEVER REMOVE THE GROUNDING PRONG FROM THE PLUG. DO NOT USE THE TOOL IF THE CORD OR PLUG IS DAMAGED. IF THE PLUG WILL NOT FIT THE OUTLET, HAVE A PROPER OUTLET INSTALLED BY A QUALIFIED ELECTRICIAN.



WARNING: ELECTRICAL CORDS CAN BE HAZARDOUS. MISUSE CAN RESULT IN FIRE OR DEATH BY ELECTRICAL SHOCK. READ CAREFULLY AND FOLLOW ALL DIRECTIONS.



WARNING: RECOMMENDED USE OF GFI RECEPTACLE.

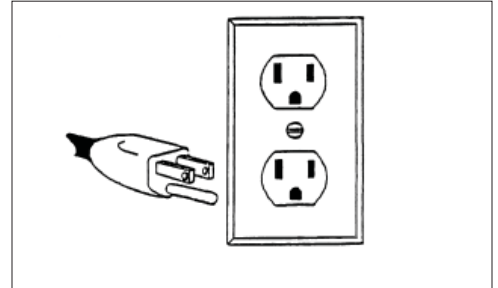


FIG. A

GROUNDING

Tools marked "Grounding Required" have a three wire cord and three prong grounding plug. The plug must be connected to a properly grounded outlet (See Figure A). If the tool should electrically malfunction or break down, grounding provides a low resistance path to carry electricity away from the user, reducing the risk of electric shock.

The grounding prong in the plug is connected through the green wire inside the cord to the grounding system in the tool. The green wire in the cord must be the only wire connected to the tool's grounding system and must never be attached to an electrically "live" terminal.

Your tool must be plugged into an appropriate outlet, properly installed and grounded in accordance with all codes and ordinances. The plug and outlet should look like those in Figure A.

Safety



WARNING: ELECTRICAL CORDS CAN BE HAZARDOUS. MISUSE CAN RESULT IN FIRE OR DEATH BY ELECTRICAL SHOCK. READ CAREFULLY AND FOLLOW ALL DIRECTIONS.

EXTENSION CORDS

Grounded tools require a three wire extension cord. Double insulated tools can use either a two or three wire extension cord. As the distance from the supply outlet increases, you must use a heavier gauge extension cord. Using extension cords with inadequately sized wire causes a serious drop in voltage, resulting in loss of power and possible tool damage.

The smaller the gauge number of the wire, the greater the capacity of the cord. For example, a 14 gauge cord can carry a higher current than a 16 gauge cord. When using more than one extension cord to make up the total length, be sure each cord contains at least the minimum wire size required. If you are using one extension cord for more than one tool, add the nameplate amperes and use the sum to determine the required minimum wire size.

GUIDELINES FOR USING EXTENSION CORDS

- If you are using an extension cord outdoors, make sure it is marked with the suffix "W-A" ("W" in Canada) to indicate that it is acceptable for outdoor use.
- Be sure your extension cord is properly wired and in good electrical condition. Always replace a damaged extension cord or have it repaired by a qualified person before using it.
- Protect your extension cords from sharp objects, excessive heat and damp or wet areas.
- Keep away from water. Do not use if wet.
- Inspect thoroughly before each use. **DO NOT USE IF DAMAGED.**
- Make sure equipment is OFF before connecting cord outlet.
- FULLY INSERT plug into outlet.
- Do not remove, bend or modify any metal prongs or pins of cord.
- Do not use excessive force to make connections.
- Do not connect a three prong plug to a two-hole cord.
- Avoid overheating. Uncoil cord and do not cover it with any material.
- Do not walk on cord.
- Do not drive, drag or place objects over cord.

GENERAL SAFETY

1. Cables damaged through crushing or splitting can be dangerous if used and should be replaced immediately. Risk of personal injury.
2. Do not connect the machine to an unearthened socket. Risk of personal injury.
3. Make sure the assembly area is firm, so the dust extractor does not tip over. Risk of personal and material injury.
4. Risk of pinching when handling the toggle fastener.
5. Do not vacuum hot or smoldering particles, as the machine can catch fire. If a fire should break out, remove the plug from the socket and extinguish the fire using the available fire-fighting equipment. An appropriate pre-separator should be connected between the suction pipe and the dust extractor when sucking up soot, ash and hot materials.
6. The machine must not be used in environments where explosives may be present. Serious risk of explosion.
7. Do not look into the suction pipe or suction hose if blocked. Serious risk of eye injury.
8. Do not direct the suction hose towards body parts when the machine is running. Avoid placing your hand or other parts of the body against the suction inlet if the suction hose is not fitted. Risk of personal injury.

9. Do not suck up water without use of the water separator. The absolute filter can be damaged.
10. Check, when lifting the machine, that the dust container is empty and that no one else is standing under the lifted machine. Risk of personal injury and material damage.

Machine Operation



FIG. B

UNPACKING

When unpacking the machine, please check that the following accessories are included:

- The hose with end fittings
- Handle
- Floor nozzle
- Extra bags

If any of the above mentioned parts are missing, please contact your distributor or our sales representative. Assemble the front wheels using the using bolt, washer and nut that are included in the package.

FUNCTION

The machine is designed for sucking and separating dry, non-combustible dust with an explosion limit value of $>0.1\text{mg}/\text{m}^3$

The motor is started by the switch. Dust-laden air is then sucked through the inlet valve at high speed via the suction hose. The air is slowed down by the cyclone and coarse dust particles are separated out, partly by centrifugal force and partly by gravity. Air and finer particles then pass through the main filter where separation is made. The machine is designed for filter cleaning by reverse air pulse.

The separated dust accumulates in the cyclone until the machine is switched off, when it drops through the bottom flap into the plastic bag.

MACHINE USE

Before use, the user must be trained in handling the machine and the hazardous dust. Connect the electric plug to an outlet with the correct voltage (see designation plate). The filter must be cleaned from time to time (see page 11). This must be done before changing the plastic bag and can also be done when the work is complete or when there is poor suction.

REPLACING BAG

3477 are equipped with Longopac system for effective dust storage. This is a 65' long plastic tube that will be divided into plastic bags using the striped attached with the machine

Release the belt holding the bag.

1. Remove the holder.
2. Put in a new Longopac bag, pull out the inner end upwards.
3. Mount the holder on to the machine and the strap the upwards end with the belt.
4. Pull down to outside end and close it using the stripe.

Only change the Longopac or bag after jet pulsing the filter.

Machine Operation

FILTER CHANGE

WARNING: RISK OF DUST DISPERSION - USE PERSONAL SAFETY EQUIPMENT
UNHEALTHY DUST CAN BE SPREAD DURING FILTER CHANGE. ACCORDINGLY, THE USER
SHOULD WEAR PROTECTIVE GLASSES, PROTECTIVE GLOVES, AND A BREATHING MASK
CONFORMING TO PROTECTION CLASS FFP3

SWITCH OFF THE MACHINE AND PULL THE PLUG OUT OF THE SOCKET.

PREFILTER (Large) Stock # 3474-20090051

1. Loosen the 3 clamps and remove the top.
2. Lift out the filter.
3. Insert new filter. Only filters purchased from National may be used.

HEPA FILTER (Small) Stock# 3472-200700070a

1. Loosen the two nuts on the filter cap.
2. Carefully lift the filter into a clean plastic bag. NOTE: This bag must be properly disposed of.
3. Insert a new filter in reverse order.
4. Check the seal when changing filters and changing defective seals.

PURGE VAC

To maximize airflow operator must periodically purge machine!

As airflow lessens follow purging instruction below:

1. Shut off vac.
2. Remove vacuum hose from hose inlet (Ref 2).
3. Cover hose inlet with plastic cap suspended from machine (Ref 2).

NOTE: IF PLASTIC CAP IS NOT AVAILABLE, CAREFULLY COVER INLET WITH THE PALM OF YOUR HAND (FIGURE D). USE PROPER SAFETY EQUIPMENT!

4. Turn vac **ON**.
5. Slowly press handle valve a minimum of 3-4 times to engage jet pulse/purge (Ref 3).
6. Turn vac **OFF**.
7. Remove plastic cap from inlet.
8. Connect vacuum hose to inlet.
9. Once the dust collector has been properly purged the air flow should view in the green position. If red, continue to purge or change filters.

NOTE: SEE PAGE 14 FOR ADDITIONAL FILTER TROUBLE SHOOTING.

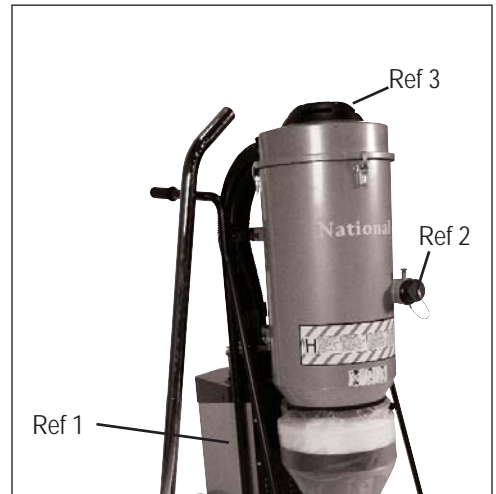


FIG. C



FIG. D

Machine Maintenance



WARNING: TO REDUCE THE RISK OF INJURY, ALWAYS UNPLUG EQUIPMENT FROM POWER SOURCE BEFORE PERFORMING ANY MAINTENANCE. NEVER DISASSEMBLE THE TOOL OR TRY TO DO ANY REWIRING ON THE TOOL'S ELECTRICAL SYSTEM. FAILURE TO DO SO COULD CAUSE DAMAGE TO MACHINE OR SERIOUS INJURY. CONTACT NATIONAL FOR ALL REPAIRS.



WARNING: TO REDUCE THE RISK OF INJURY, ELECTRIC SHOCK AND DAMAGE TO THE TOOL, NEVER IMMERSE YOUR TOOL IN LIQUID OR ALLOW A LIQUID TO FLOW INSIDE THE TOOL.

MAINTAINING EQUIPMENT

Keep equipment in good repair by adopting a regular maintenance program. Before use, examine the general condition of equipment. Inspect guards, switches, tool cord set and extension cord for damage. Check for loose screws, misalignment, binding of moving parts, improper mounting, broken parts and any other condition that may affect its safe operation. If abnormal noise or vibration occurs, turn the tool off immediately and have the problem corrected before further use. Do not use a damaged tool. Tag damaged tools "DO NOT USE" until repaired. See Repairs.

- Mechanical inspection
- Cleaning (pulleys, spindles, bearings, housing, etc.)
- Electrical inspection (switch, cord, plugs, etc.)
- Testing to assure proper mechanical and electrical operation
- Check nuts on shock absorbers and bottom plate for tightness
- Check screws on bottom bearing for tightness
- Check all screws and fittings for a tight and secure fit
- Keep a sharp blade in machine for optimum performance
- Remove blade when machine is not in use.

CLEANING

Clean dust and debris from vents. Keep the Equipment handle clean, dry and free of oil or grease. Use only mild soap and a damp cloth to clean since certain cleaning agents and solvents are harmful to plastics and other insulated parts. Some of these include: gasoline, turpentine, lacquer thinner, paint thinner, chlorinated cleaning solvents, ammonia and household detergents containing ammonia. Never use flammable or combustible solvents around tools.

Machine is pressure washable. Motor, motor junction box, capacitor box and switch are protected from splashes of water but can not be subjected to jets of high pressure. Thoroughly dry machine before use. Do not use machine when wet or damp.

REPAIRS

If your tool is damaged, contact National for a return authorization number and return the entire tool.

- Shipments are not accepted without a return authorization number.
- COD or freight collect shipments will not be accepted.

Machine Maintenance

GENERAL MAINTENANCE

When cleaning and servicing the machine, you must switch off the machine and remove the plug from the socket.

- Avoid cleaning with a high pressure cleaner. If necessary, do not direct at the opening on the machine, especially the opening for cooling air.
- Before moving the machine from the work area, the machine must be cleaned. Furthermore, the inlet must be locked using the expanding plug attached.
- All other equipment must be regarded as contaminated and be treated thereafter.
- If possible, use a special suitable room.
- Proper personal protective equipment must be used.
- All parts which are contaminated after service must be properly disposed of in plastic bags according to all regulations.
- If the machine has to be used for other purposes, it is extremely important that the machine is cleaned, to avoid the spread of hazardous dust.

SERVICE

1. Remove the plug from the wall socket when carrying out maintenance work. Risk of personal injury. Replace all guards over the motor and fan components once servicing is complete.
2. Always keep an eye on the machine when using the Auto Start function. Risk of personal injury.
3. Dust can be spread when cleaning the coarse filter and during filter and bag replacement. Accordingly, the user should wear protective glasses, protective gloves, and a breathing mask conforming to protection class FFP3.
4. Do not puncture the absolute filter. Risk of dust dispersion.

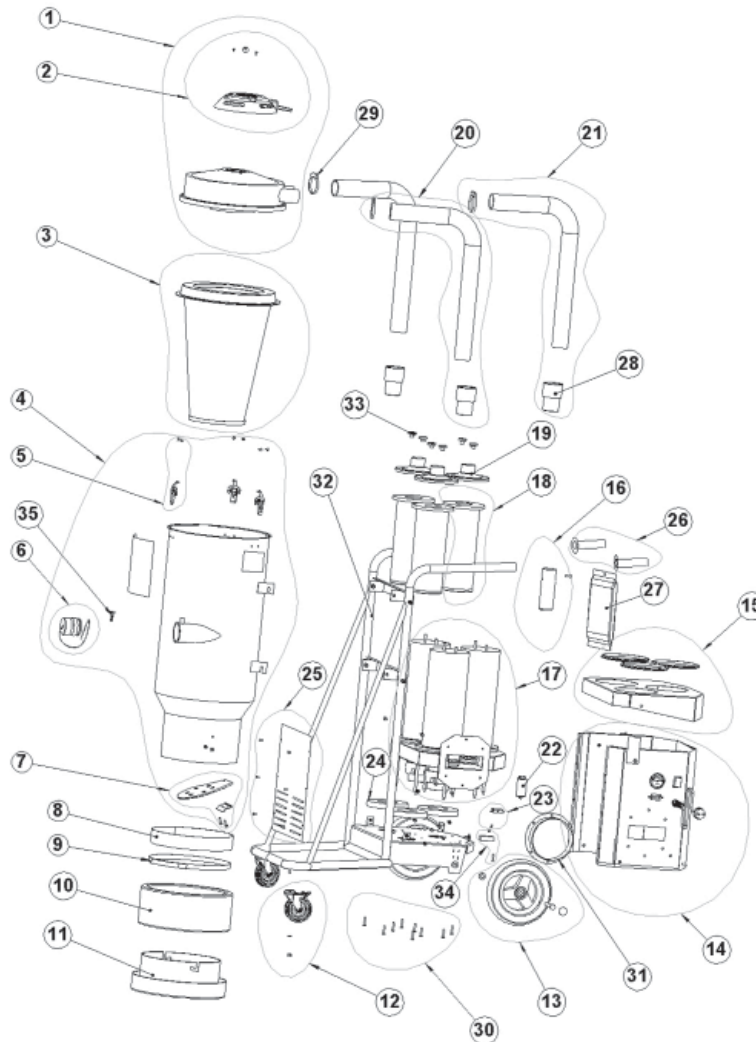
Troubleshooting Guide

The machine is designed and manufactured for a severe environment and tasks, but the user must note that the machine must be protected from knocks and blows. Filter, seals, attachments, and connections are carefully adapted and selected with regard to the operators work environment. Therefore, the operator and service personnel must treat the machine with the care in order to work correctly for many years.

Problem	Cause	Solution
Motor does not start	<ol style="list-style-type: none">1. No Power2. Cable Defective3. Switch Defective	<ol style="list-style-type: none">1. Connect the machine2. Replace3. Replace
Motor stops immediately after starting	Wrong fuse	Connect to correct fuse
Motor runs but there is no suction	<ol style="list-style-type: none">1. Hose not connected2. Hose Blocked3. No plastic bag	<ol style="list-style-type: none">1. Connect hose2. Clean hose3. Fit longopac bag
Motor runs but suction is poor	<ol style="list-style-type: none">1. Hose in the bag2. Filter blocked3. Top cover loose4. Sealing Defective	<ol style="list-style-type: none">1. Change hose2. Change filter3. Adjust4. Change current seal
Dust blows from motor	Filter loose or defective	Adjust or change
Abnormal noise		Order service

Parts List and Diagrams

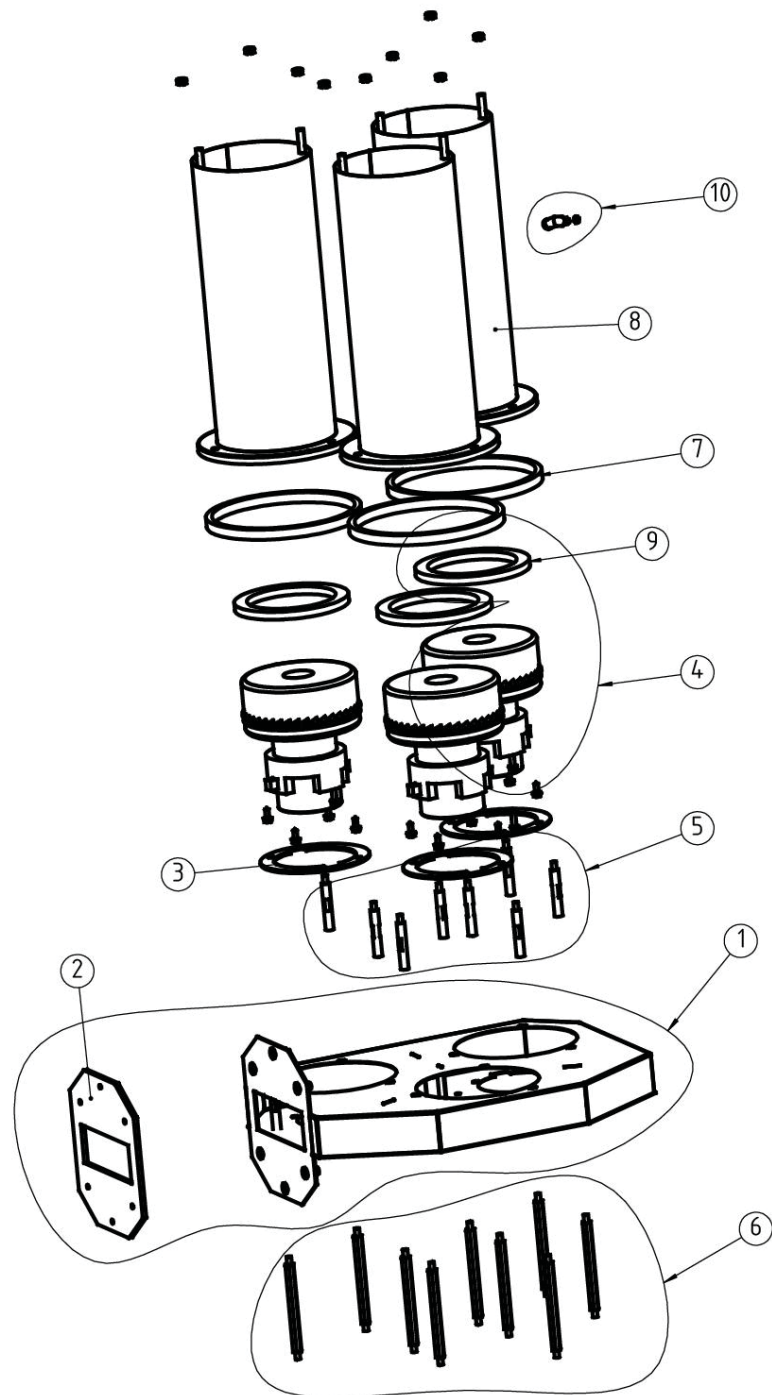
EXTERNAL PARTS



PART#	DESCRIPTION	QTY	PART#	DESCRIPTION	QTY
1	201100160 Top Cover Packing	1	19	201000121 Filter Cover Kit	3
2	201000118 Clean Unit Assembly Packing	1	20	201000203 Middle Hose Kit	2
3	200900051 Filter	1	21	201000204 Hose Kit	1
4	201000200a Tank Complete	1	22	3477-201100158 Electrical Filter	1
5	200600799 Holder Kit	3	23	200700410 Soft Start Kit	1
6	201000145 Inlet Seal Complete Set	1	24	201100161 Insulation Packing	3
7	201000116 Flap Kit	1	25	201000205 Plate Cover Kit of Motor Cover	1
8	201100141 Anti-Skid Packing	1	26	201000206 Handle Kit Packing	1
9	201100140 Belt Packing	1	27	95102 Longopac Seal Clips	1
10	1376013 Longopac Bag 4 Pack	1	28	201100125 Hose End Packing	3
11	201100135 Longopac Holder Packing	1	29	201100137 Hose Clamp Packing	3
12	200800152 Front Wheel Kit	1	30	201000207 Screw and Nut Set	1
13	200800151 Rear Wheel Kit	1	31	201000208 6.3" Exhaust Air Outlet Packing	1
14	201100167 Motor Cover Assembly	1	32	201000209 Wagon Assembly	1
15	201000201 Top Motor Cover Kit	1	33	201100128 Kinrled Thumb Nut	6
16	200800153 Clip Holder Kit	1	34	201000210 Connection Bridge Kit	1
17	201100169 Motor Box Kit Packing	1	35	201100139 Locking Device Packing	1
18	200700070a HEPA Filter	3	36	201000670 Top Cover Kit (ex. Clean Unit)	1

Parts List and Diagrams

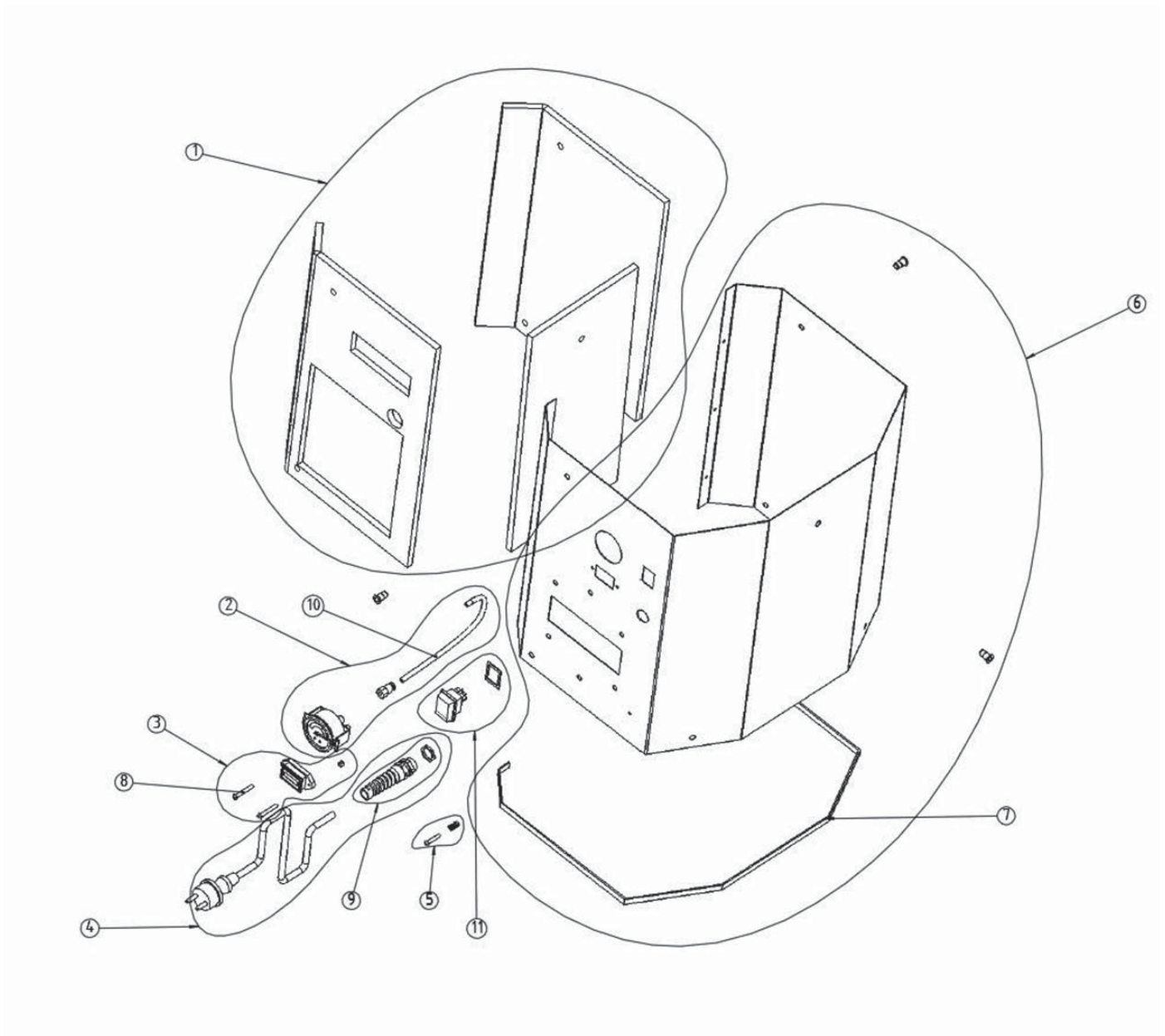
INTERNAL PARTS



PART#	DESCRIPTION	QTY	PART#	DESCRIPTION	QTY
1	201100171 Motor Box	1	6	201100175 Lower Support Pin Kit	1
2	201100172 Sealing 6.3" Outlet	1	7	201100170 Top Motor Sealing	1
3	201100173 Sealing Packing	1	8	201100176 Filter Housing	3
4	200800060 Motor 230V Kit	3	9	201100177 Motor Sealing Kit	1
5	201100174 Upper Support Pin Kit	1	10	201000178 Nipple Angle Kit	1

Parts List and Diagrams

COVER PARTS



PART#	DESCRIPTION	QTY	PART#	DESCRIPTION	QTY
1	201100165 AC Foam Packing	1	7	201100163 Sealing Packing	1
2	200700413 Manometer Kit	1	8	201000213 Screw Set of Counter	2
3	201000133 Counter Set	1	9	201100150 Cable Fix Kit	1
4	201100149 Cord Set Packing	1	10	201100164 Hose Packing	1
5	201000211 Grounding Screw Kit	1	11	201100151 Switch Packing	1
6	201000212 Motor Cover	1			

Accessories

HOSE



3477-201000061 - 25'

3477-201000128 - 30'

Dust Collector Hose

MAIN FILTERS



200900051



200700070A

3477-200900051

Replacement Main Polyester Filter for 3477

3477-200700070A

Replacement HEPA Filter for 3477

LONGOPAC SYSTEM



3477-1376013

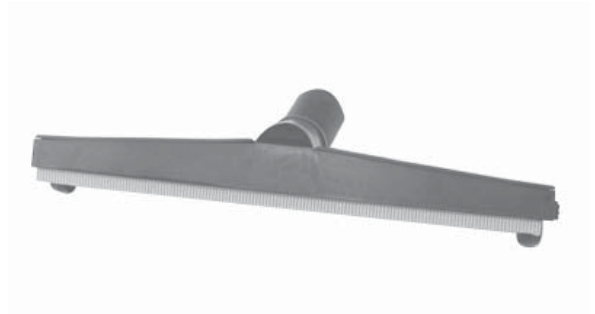
4 Pack

Accessories

3477-400350

Floor Tool - 2" x 17.75"

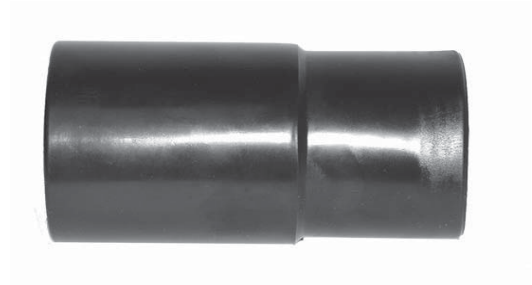
FLOOR TOOL



3477-400399

Hose Connector - Vac

HOSE TO VAC CONNECTOR



3477-401470

Hose Connector - Wand

WAND TO HOSE CONNECTOR



3477-400349

1.5 Ft

1 Bent Piece

1 Straight Piece

3 PIECE WAND SET



Guarantee

National Flooring Equipment, Inc. (National) warrants to the first consumer/purchaser that this National brand product (**3477 Dust Collector**) when shipped in its original container, will be free from defective workmanship and materials and agrees that it will, at its option, either repair the defect or replace the defective product or part thereof at no charge to the purchaser for parts or labor for the period(s) set forth below.

This warranty does not apply to any appearance items of the product, to the additional excluded items set forth below, or to any product, the exterior of which has been damaged or defaced, which has been subjected to misuse, abnormal service or handling, or which has been altered or modified in design or construction.

In order to enforce the rights under this limited warranty, the purchaser should follow the steps set forth below and provide proof of purchase to National.

The limited warranty described herein is in addition to whatever implied warranties may be granted to purchasers by law. All implied warranties including the warranties of merchantability and fitness for use are limited to the periods from the date of purchase as set forth below. Some states do not allow time limitations on an implied warranty, so the above limitation may not apply to you.

Neither the sales person of the seller, nor any other person, is authorized to make any other warranties other than those described herein, or to extend the duration of any warranties beyond the time period described herein on behalf of National.

The warranties described herein shall be the sole and exclusive warranties granted by National and shall be the sole and exclusive remedy available to the purchaser. Correction of defects in the manner and for the period of time described herein, shall constitute complete fulfillment of all liabilities and responsibilities of National to the purchaser with respect to the product and shall constitute full satisfaction of all claims, whether based on contract, negligence, strict liability or otherwise. In no event shall National be liable, or in any way responsible for any damage or defects in the product which were caused by repairs or attempted repairs performed by anyone other than National. Nor shall National be liable, or in any way responsible, for any incidental or consequential, economics or property damage. Some states do not allow the exclusion of incidental or consequential damages, so the above exclusion may not apply to you.

This warranty gives you specific legal rights. You may also have other rights which vary from state to state.

WARRANTY PERIOD

The **3477 Dust Collector** is guaranteed to be free of manufacturer defective workmanship and in quality of materials for a period of one year.

Items excluded from warranty coverage, unless found and reported defective immediately upon removal from the original shipping container and before being used by the original purchaser.

A freight damage claim must be filed with the carrier by the purchaser, the shipper cannot file the freight claim.

TO OBTAIN SERVICE CONTACT NATIONAL FLOORING EQUIPMENT, INC. TOLL FREE AT 800-245-0267 FOR A REPAIR AUTHORIZATION NUMBER. COD FREIGHT RETURNS WILL NOT BE ACCEPTED. FREIGHT COLLECT SHIPMENTS WILL NOT BE ACCEPTED. WARRANTY REPAIRS MUST BE ACCOMPANIED BY DATE OF PURCHASE RECEIPT AND A RETURN/REPAIR AUTHORIZATION NUMBER.

RETURN/REPAIR AUTHORIZATION NUMBER: _____

MACHINE SERIAL NUMBER: _____



Made in America Since 1968

9250 Xylon Avenue N • Minneapolis, MN 55445 • U.S.A.
Toll-free 800-245-0267 • Phone 763-315-5300 • Fax 800-648-7124 • Fax 763-535-8255
Web Site: www.nationalequipment.com • E-Mail: info@nationalequipment.com