

3472

HEPA DUST COLLECTOR INSTRUCTION MANUAL

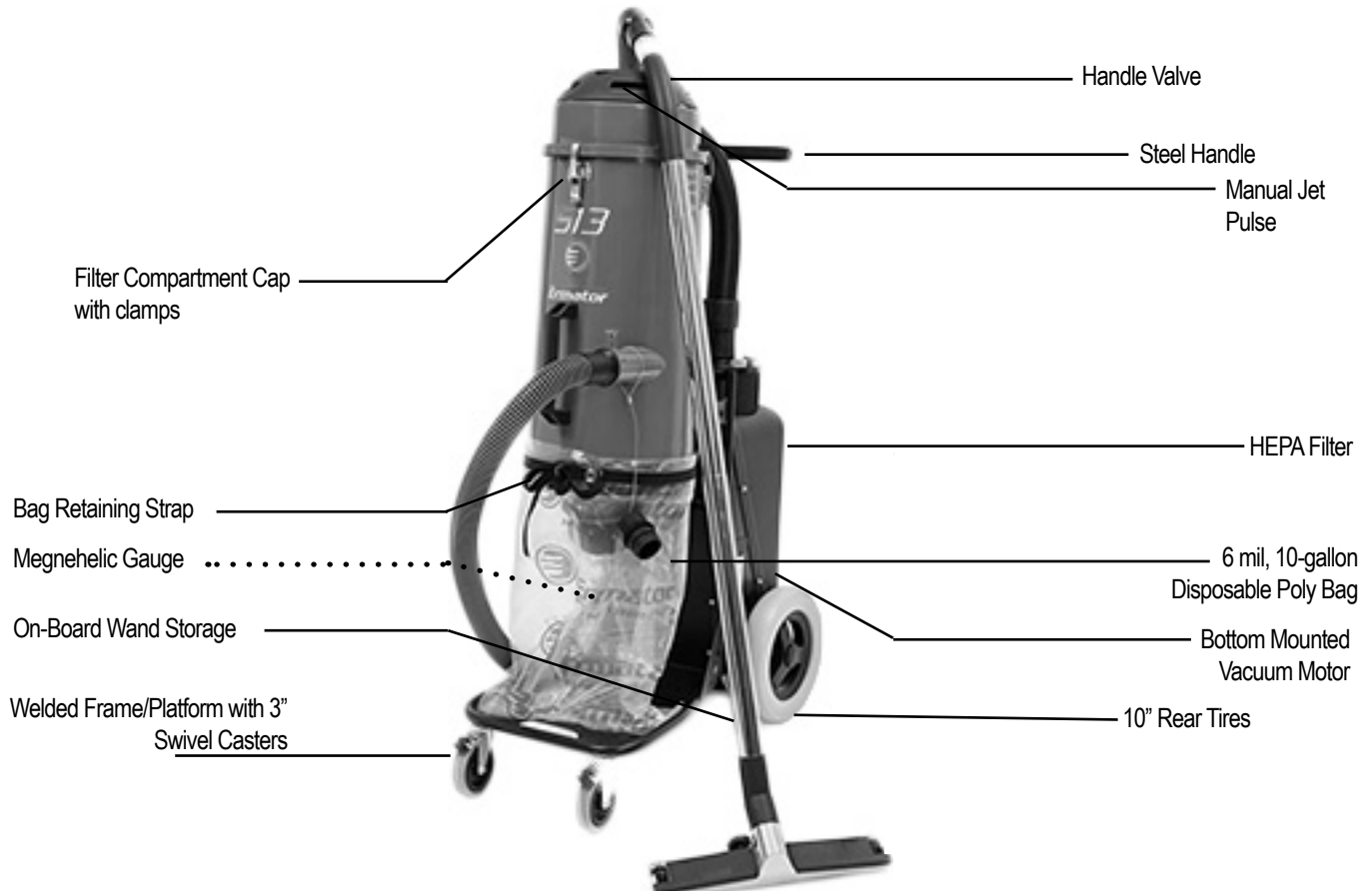


Caution: Read Manual Before Operating Machine

Table of Contents

Table of Contents	3
Features and Specifications	4
Safety	5-11
General Rules for Safe Operation	5-6
Characteristics of a Defensive Operator	6
Grounding	7
Extension Cords	7-8
Organizational Measures	9
Personnel Qualification	9
Safety Precautions	9
Mechanical service work	10
Electrical Engineering Regulations	10
Warnings	11
Machine Operation	12-13
Unpacking	12
Function	12
Machine Use	12
Purge Vac	12
Replacing Bag	13
Filter Change	13
Maintaining Equipment	14
Service	14
Troubleshooting Guide	15
Parts List and Diagrams	16-18
Internal Parts	16
External Parts	17-18
Accessories	19
Warranty	20

Features and Specifications



FEATURES

Manual Jet Pulse- efficient cleaning without opening vacuum.

Bag Retaining Strap - secures bag during operation, fast and easy removal and replacement.

Megnehelic Gauge- Measures airflow through filter (green=clean filter, red=filter is full/time to purge vac.

Filter Compartment Cap with Thumb Screws- Fast, easy filter changes without tools.

On-Board Wand Storage- easy access to wand and floor tools.

Bottom Mounted Vacuum Motor- commercial grade motor providing high cfm and waterlift for fast pick-up. Low center of gravity provides excellent stability.

Handle Valves- used to engage jet pulse/purge.

6 mil, 10-gallon Disposable Poly Bag- strong, safe & convenient disposal and handling of dust.

Welded Frame/Platform with 3\" Swivel Casters- sturdy support & mobility even with full bags.

Steel Handle- easy mobility on congested jobsites.

HEPA Filter- tested and certified cylindrical shape, efficient cleaning without opening vacuum.

10\" Rear Tires- smooth, easy transport over power cords and other floor obstructions.

Product Specifications

Voltage	Max Airflow (cfm)	Main Filter (sq. ft)	HEPA 13 Filter (sq. ft)	Filter Efficiency %@0.3 microns	Length	Width	Height	Weight	Hose Length
120	129	16.6	13.32	99.97%	33" (80.4 cm)	15.75" (40 cm)	43.5" (110 cm)	62 lb (28 kg)	27" x 1.5" (4mx 38mm)

Safety

GENERAL RULES FOR SAFE OPERATION

READ AND SAVE ALL INSTRUCTIONS FOR FUTURE USE. Before use, ensure operators reads and understand this manual. Read and understand labeling on machine and components.

1. **KNOW YOUR EQUIPMENT:** Read this manual carefully to learn equipment applications and limitations, potential hazards associated with this type of equipment. Keep this manual with the equipment it is associated with.
2. **GROUND YOUR EQUIPMENT:** See Grounding Page 7.
3. **AVOID DANGEROUS ENVIRONMENTS:** Do not use in rain, damp or wet locations, or in the presence of explosive atmospheres (gaseous fumes, dust or flammable materials). Remove materials or debris that may be ignited by sparks.
4. **KEEP WORK AREA CLEAN AND WELL LIT:** Cluttered, dark work areas invite accidents.
5. **DO NOT USE ON STEPS.**
6. **DRESS PROPERLY:** Do not wear loose clothing. These may be caught in moving parts. When working wear gloves and insulated non-skid footwear. Keep hands and gloves away from moving parts.
7. **USE SAFETY EQUIPMENT:** Proper eye protection should be worn at all times. Wear hearing protection during extended use and a dust mask for dusty operations. Hard hats, face shields, safety shoes, etc. should be worn when specified or necessary.
8. **KEEP BYSTANDERS AWAY:** Children and other bystanders should be kept at a safe distance from the work area to avoid distracting the operator and contacting the equipment or extension cord. Operator should be aware of the proximity of bystanders. This appliance is not intended for use by persons (including children) with reduced physical, sensory or mental capabilities or lack of experience and knowledge. Equipment is not to be used by children.
9. **PROTECT OTHERS IN THE WORK AREA:** Provide barriers or shields as needed to protect others from debris.
10. **USE PROPER ACCESSORIES:** Using accessories that are not recommended is hazardous. Be sure accessories are properly installed and maintained.
11. **CHECK FOR DAMAGED PARTS:** Inspect guards and other parts before use. Check for misalignment, binding of moving parts, improper mounting, broken parts and other conditions that may affect operation. If abnormal noise or vibration occurs, turn off immediately and have the problem corrected before further use. Do not use damaged equipment. Tag damaged equipment "DO NOT USE" until repaired. Missing or damaged parts should be properly repaired or replaced immediately. For all repairs, use only identical National replacement parts.
12. **REMOVE ALL ADJUSTING KEYS AND WRENCHES:** Make a habit of checking that any adjusting keys, wrenches, etc. are removed from the tool before turning it on.
13. **GUARD AGAINST ELECTRIC SHOCK:** Prevent body contact with grounded surfaces such as pipes, radiators, ranges and refrigerators. Hold your equipment by insulated nonmetal grasping surfaces. Use a Ground Fault Circuit Interrupter (GFCI) to reduce shock hazards.
14. **AVOID ACCIDENTAL STARTING:** Be sure equipment is turned off before plugging in. Do not use equipment if the power switch does not turn the equipment on and off.
15. **DO NOT FORCE EQUIPMENT:** Equipment will perform best at the rate for which it was designed. Excessive force only causes operator fatigue, increased wear and reduced control.
16. **KEEP HANDS AWAY FROM ALL MOVING PARTS.**
17. **WEAR** gloves when changing accessories.
18. **DO NOT ABUSE CORD:** Never unplug by pulling the cord from the outlet. Pull plug rather than cord to reduce the risk of damage. Keep the cord away from heat, oil, sharp objects, cutting edges and moving parts.
19. **DO NOT OVERREACH. MAINTAIN CONTROL:** Keep proper footing and balance at all times. Maintain a firm grip.
20. **STAY ALERT:** Watch what you are doing, and use common sense. Do not use when you are tired, distracted or under the influence of drugs, alcohol or any medication causing decreased control.
21. **STARTING MACHINE:** On/Off switch must be in off position before connecting to power source.
22. **UNPLUG EQUIPMENT:** When not in use and before changing accessories or performing recommended maintenance, unplug machine.
23. **MAINTAIN EQUIPMENT CAREFULLY:** Keep handles dry, clean and free from oil and grease. Inspect tool cords and extension cords for damage. Replace damaged parts. Use only original replacement parts.

Safety

24. **STORE IDLE EQUIPMENT:** When not in use, store in a dry, secured place. Keep away from children.
25. **MAINTAIN LABELS AND NAMEPLATES:** These carry important information. If unreadable or missing, contact National for a replacement.
26. **MACHINE IS HEAVY, DO NOT DROP.** Ensure proper lifting procedures are followed when transporting.
27. **REGULARLY EXAMINE** the supply cord for damage, such as cracking or aging. If damaged, replace the cord before further use. Only replace the supply cord with the type specified in this manual.

CHARACTERISTICS OF A DEFENSIVE OPERATOR

A Good Operator is a "Defensive" Operator!

QUALITIES INCLUDE:

Education: Educates themself on the machine and the environment.

Alert: Stays alert at all time and never lets guard down.

Skills: Only performs duties he/she is qualified to do. Always tries to improve.


Judgment: Use sound judgement. Does not take unnecessary risks.

Common Sense: Applies knowledge in practical situations.

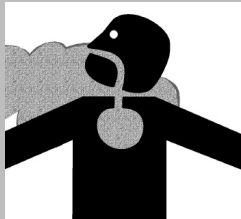
Recognizes the Hazards: Maintains alertness. Anticipates danger.

Understands the Defense: Knows that safety isn't an accident...it's a thinking person's choice.

Acts Correctly: Does not give in to peer pressure. Performs correctly when supervised or not.



WARNING: SILICA DUST WARNING SHOTBLASTING/SCRAPING/GRINDING/CUTTING/DRILLING OF MASONRY, CONCRETE, METAL AND OTHER MATERIALS CAN GENERATE DUST, MISTS AND FUMES CONTAINING CHEMICALS KNOWN TO CAUSE SERIOUS OR FATAL INJURY OR ILLNESS, SUCH AS RESPIRATORY DISEASE, CANCER, BIRTH DEFECTS OR OTHER REPRODUCTIVE HARM. IF YOU ARE NOT FAMILIAR WITH THE RISKS ASSOCIATED WITH THE PARTICULAR MATERIAL THAT YOU ARE WORKING WITH, REVIEW THE MATERIAL SAFETY DATA SHEET AND/OR CONSULT YOUR EMPLOYER, THE MATERIAL MANUFACTURER/SUPPLIER, GOVERNMENTAL AGENCIES SUCH AS OSHA AND NIOSH AND OTHER AUTHORITIES ON HAZARDOUS MATERIALS. CALIFORNIA AND SOME OTHER AUTHORITIES, FOR INSTANCE, HAVE PUBLISHED LISTS OF SUBSTANCES KNOWN TO CAUSE CANCER, REPRODUCTIVE TOXICITY, OR OTHER HARMFUL EFFECTS. CONTROL DUST, MIST AND FUMES AT THE SOURCE WHERE POSSIBLE. IN THIS REGARD USE GOOD WORK PRACTICES AND FOLLOW THE RECOMMENDATIONS OF THE MANUFACTURER/SUPPLIER, OSHA/NIOSH, AND OCCUPATIONAL AND TRADE ASSOCIATIONS. WHEN THE HAZARDS FROM INHALATION OF DUST, MISTS AND FUMES CANNOT BE ELIMINATED, THE OPERATOR AND ANY BYSTANDERS SHOULD ALWAYS WEAR A RESPIRATOR APPROVED BY OSHA/MSHA WHEN WORKING WITH DANGEROUS MATERIAL.



Safety



WARNING: ELECTRICAL CORDS CAN BE HAZARDOUS. MISUSE CAN RESULT IN FIRE OR DEATH BY ELECTRICAL SHOCK. READ CAREFULLY AND FOLLOW ALL DIRECTIONS.

GROUNDING

Jobsite receptacles can vary. Check the voltage at different receptacles on the jobsite for a more accurate voltage reading. 15 amp GFI outlets are not recommended.



CAUTION: IMPROPERLY CONNECTING THE GROUNDING WIRE CAN RESULT IN THE RISK OF ELECTRIC SHOCK. CHECK WITH A QUALIFIED ELECTRICIAN IF YOU ARE IN DOUBT AS TO WHETHER THE OUTLET IS PROPERLY GROUNDED. DO NOT MODIFY THE PLUG PROVIDED WITH THE EQUIPMENT. NEVER REMOVE THE GROUNDING PRONG FROM THE PLUG. DO NOT USE THE EQUIPMENT IF THE CORD OR PLUG IS DAMAGED. IF THE PLUG WILL NOT FIT THE OUTLET, HAVE A PROPER OUTLET INSTALLED BY A QUALIFIED ELECTRICIAN.

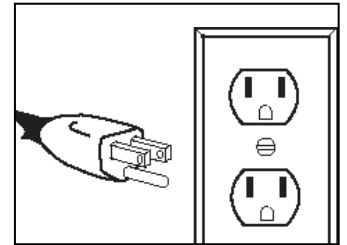


FIG. A

GROUNDING TOOLS: TOOLS WITH THREE PRONG PLUGS

120V Equipment marked "Grounding Required" have a three wire cord and three prong grounding plug. The plug must be connected to a properly grounded outlet (Figure A). If the equipment should electrically malfunction or break down, grounding provides a low resistance path to carry electricity away from the user, reducing the risk of electric shock.

The grounding prong in the plug is connected through the green wire inside the cord to the grounding system in the equipment. The green wire in the cord must be the only wire connected to the equipment's grounding system and must never be attached to an electrically "live" terminal.

The equipment must be plugged into an appropriate outlet, one which is properly installed and grounded in accordance with all codes and ordinances. The plug and outlet FOR 120V should look like the example in Figure A.

EXTENSION CORDS

120V Grounded equipment requires a three wire extension cord. As the distance from the supply outlet increases, you must use a heavier gauge extension cord. Using extension cords with inadequately sized wire causes a serious drop in voltage, resulting in loss of power and possible equipment damage.

GUIDELINES FOR USING EXTENSION CORDS

- If you are using an extension cord outdoors, make sure it is marked with the suffix "W-A" ("W" in Canada) to indicate that it is acceptable for outdoor use.
- Be sure your extension cord is properly wired and in good electrical condition. Always replace a damaged extension cord or have it repaired by a qualified person before using it.
- Protect your extension cords from sharp objects, excessive heat and damp or wet areas.
- Keep away from water. Do not use if wet.
- Inspect thoroughly before each use. DO NOT USE IF DAMAGED.
- Make sure equipment is not running before disconnecting cord.
- FULLY INSERT plug into outlet.
- Do not remove, bend or modify any metal prongs or pins of cord.

Safety

GUIDELINES FOR USING EXTENSION CORDS (CONTINUED)

- Do not use excessive force to make connections.
- Do not connect a three prong plug to a two prong cord.
- Avoid overheating. Uncoil cord and do not cover it with any material.
- Do not walk on cord.
- Do not drive, drag or place objects over cord.
- Use a 12 gauge, 115v cord, 50ft maximum length with this machine.
- Regularly examine the supply cord for damage, such as cracking or aging. If damage is found, replace the cord before further use.
- Only replace the supply cord with the type specified in the instruction manual.

Safety

ORGANIZATIONAL MEASURES



WARNING: THE PRODUCT MANUALS ARE TO BE KEPT WITH THE MACHINE AND MUST BE ACCESSIBLE AT ALL TIMES.

In addition to the instruction manual, general and legal regulations regarding accident prevention and environmental protection must be with and indicated every time.

Such duties may relate to the handling of hazardous substances, to the provision and wearing of personal protection equipment or compliance with local traffic regulations.

The instruction manual must be supplemented by instructions that include the duty to supervise and report relating to particular local working practices for example work organization, work procedures and personnel allocation.

Personnel entrusted with working with the machine must have read the instruction manual before starting the work, in particular the chapter about Safety. These have to be done before starting any work with the machine. This particularly applies to incidental activities such as setting up the machine, carrying out maintenance work or training staff to work with the machine.

From time to time the working practices of the staff are to be checked regarding awareness of safety and hazards.

Personnel must tie back long hair and not wear loose clothing or jewelry rings. There is a risk of injury through getting stuck or being drawn into moving machinery.



WARNING: CHANGES, ADD-ONS OR CONVERSIONS TO THE MACHINE WHICH MIGHT INFLUENCE THE SAFETY OF THE MACHINE MUST NOT BE UNDERTAKEN WITHOUT THE PERMISSION OF THE MANUFACTURER.

Spare parts must always comply with the technical requirements and the specification of the manufacturer. This is always guaranteed with original spare parts of the manufacturer.

Inspection intervals and intervals for recurring checks specified in these operating instructions must be complied with. At the same time it is necessary to meet the legal requirements.

To perform maintenance work correctly it is important to be equipped with proper tools for the task in question.

The location and the operation of fire extinguishers must be made known on each building site.

PERSONNEL QUALIFICATION

- Only reliable and trained personnel should work on the machine.
- Only trained personnel should operate the machine. Note the statutory minimum age. Clearly specify the responsibilities of personnel for operation, setup, service and maintenance work.
- Make sure that only authorized personnel operate or work on the machine.
- Clearly designate the machine operator. Define his responsibilities and empower him to decline instructions from third parties which are not complying with the safety requirements.
- Personnel being trained or made acquainted with the equipment may only be deployed under constant supervision of an experienced operator or trainer.

SAFETY PRECAUTIONS

- Avoid any method of working that impairs safety.
- All precautions have to be taken to ensure that the machine will only be used in a safe and functional status.
- The machine has to be checked visually at least once a day for any damage and/or defect.
- In the event of operational malfunctions the machine must be shut down immediately and secured. The fault must be rectified before starting the machine again.

Safety

SAFETY PRECAUTIONS (CONTINUED)

- Start up and switch off operations and control devices have to be handled in accordance with the operating instructions.
- Before starting the machine make sure that nobody can be endangered when the machines starts running.

MECHANICAL SERVICE WORK

Before starting any servicing work on the machine, turn off the machine and unplug any cords from their power source.

Adjustments, servicing and inspection work and inspection intervals specified in these Machine Operation instructions as well as any information on the replacement on parts and systems of the machine must be undertaken and / or complied with.

These activities can only be undertaken by qualified personnel.

Before starting any maintenance or repair work the operator of the machine must be informed about it.

During all work related to the use, the re-erection or the adjustment of the machine and of the safety devices as well as inspection, maintenance and repair, the start up and shut off procedures must be done in accordance with the instruction manual.

The dust bag of a connected dust collector must be emptied before transportation. Please handle in accordance with regulations.

Do not use any aggressive cleaning materials! Use lint-free cleaning cloths. Always tighten any screw connection that are undone during servicing and maintenance work.

If safety devices need to be dismantled during setting up, servicing and repair work, these safety devices must be reinstalled and inspected immediately after completion of the servicing and repair work.



WARNING: WORK ON THE ELECTRICAL PARTS OF THE EQUIPMENT MAY ONLY BE UNDERTAKEN BY A SKILLED ELECTRICIAN OR BY A TRAINED PERSON UNDER THE GUIDANCE AND SUPERVISION OF A SKILLED ELECTRICIAN AS WELL AS IN ACCORDANCE WITH THE ELECTRICAL ENGINEERING REGULATIONS.

Make sure that process materials and replacement parts are disposed of safely and in an environmentally-friendly manner.

Make sure that electrical components used for replacement purpose comply with the original parts and are correctly adjusted if necessary.

ELECTRICAL ENGINEERING REGULATIONS

Only start work once you are familiar with the electrical engineering regulations that apply to your area.

Only use voltage meters that comply with the regulations when troubleshooting.

From time to time check voltage meters to ensure that they are operationally efficient.

Use only proper tools for your work. Damaged tools have to be repaired immediately or be replaced.

For your own safety the required safety equipment and clothing used when working with the machine (e.g. safety glasses, safety shoes, safety gloves).

Please instruct your operators and the repair personnel about the following points:

- Greasing, cleaning, and repair work is only allowed if the machine is shut off and power cords unplugged.
- Make sure that during the work on the machine it cannot be started.
- Do not open or remove safety covers while the machine is running.
- Do not forget to reinstall all safety covers and safety devices after cleaning, repair and maintenance work.
- Do not touch moving parts and do not walk into the working path of the machine.
- Please be sure that no person is in the working area and could be endangered before starting the machine.

WARNINGS

Risk of personal injury

- Cables damaged through crushing or splitting can be dangerous if used and should be replaced immediately.
- Do not connect the machine to an ungrounded socket.
- Remove the plug from the wall when performing maintenance work.
- Dust can be spread when the coarse filter and the absolute filter are replaced that can be hazardous to your health. Personal protective equipment, such as safety glasses, gloves, and breathing masks must be worn.
- **Do not puncture the absolute filter.**

Risk of personal and material injury

- Make sure the assembly area is stable so the dust extractor does not tip over. Risk of pinching when handling the toggle fastener.

Serious risk of explosion

- The machine must not be used in environments where explosive gases may be present.

THE HEPA DUST COLLECTOR CAN ONLY BE USED WITH DRY, NON-EXPLOSIVE MATERIAL AND HAS BEEN DESIGNED TO CLEAN CONSTRUCTION AREAS TO BE CONNECTED TO SMALL ELECTRICAL MACHINES SUCH AS DRILLS ETC.

National will not be held responsible if the dust extractor is used for other applications or been used in ways other than those outlined in this instruction manual.

Please pay particular attention to the safety regulations.

Read the complete instruction manual before using the Hepa Dust Collector.

All spare parts used with the Hepa Dust Collector must be those specified by National.

Machine Operation

UNPACKING

When unpacking the machine, please check that the following accessories are included:

- Hose with end fittings
- Handle
- Floor nozzle
- Extra bags

If any of the above mentioned parts are missing, please contact your distributor or our sales representative.

Assemble the front wheels using the bolt, washer and nut that are included in the package.

FUNCTION

- The machine is designed for sucking and separating dry, non-combustible dust with an explosion limit value of 0.1mg/m³.
- The motor is started by the switch, which has three positions:
0: Motor off 1: Motor on (2: Autostart function, only 230V version).
- Dust-laden air is then sucked through the inlet valve at high speed via the suction hose. The air is slowed down by the cyclone and coarse dust particles are separated out, partly by centrifugal force and partly by gravity. Air and finer particles then pass through the double filter system where separation is made. The machine is designed for filter cleaning by reverse air pulse.
- The separated dust accumulates in the cyclone until the machine is switched off, when it drops through the bottom flap into the plastic bag.

MACHINE USE

Connect the electric plug to an outlet with the correct voltage.

- Before use, the user must be trained in handling the machine and the hazardous dust.
- The filter must be cleaned from time to time. This must be done before changing the plastic bag and can also be done when the work is complete or when there is poor suction.

PURGE VAC

To maximize airflow, the operator must periodically purge the machine as airflow lessens. Follow purging instruction below:

1. Shut off vac.
2. Remove vacuum hose from hose inlet (Ref 1)
3. Cover hose inlet with plastic cap suspended from machine (Ref 1)

NOTE: IF PLASTIC CAP IS NOT AVAILABLE, CAREFULLY COVER INLET WITH THE PALM OF YOUR HAND. USE PROPER SAFETY EQUIPMENT.

4. Turn vac **ON**.
5. Slowly press handle valve a minimum of 3-4 times to engage jet pulse/purge (Ref 2)
6. Turn vac **OFF**.
7. Remove plastic cap from inlet.
8. Connect vacuum hose to inlet.
9. Once the dust collector has been properly purged, the air flow gauge should view in the green position. If red, continue to purge or change filters.



REPLACING BAG

Important Note: Only original bags purchased from National may be used.
Failure to follow these instructions will result in damage to HEPA filter and/or machine.

1. Shut off vac.
2. Bag may only be replaced after cleaning the filter.
3. Remove bag retaining strap.
4. Carefully lift debris filled, securely close, and properly dispose of.
5. Insert new dust collection bag and securely replace bag retaining strap.

FILTER CHANGE

Switch off the machine and pull the plug out of the socket.

- Risk of dust dispersion - Use of personal safety equipment.
- Unhealthy dust can be spread during filter change. Accordingly, the user should wear protective glasses, protective gloves, and a breathing mask conforming to protection class FFP3.

Main filter

- Loosen the 3 clamps and remove the top.
- Lift out the filter, remove the gasket and place the filter gently in a plastic bag.
- Dispose of the bag properly.
- Insert a new filter.
- Use only original filters.

Hepa Filter

- Loosen the two nuts on the filter cap and carefully lift the filter into a clean plastic bag.
- Dispose of the bag properly.
- Insert a new filter in reverse order.
- Check the seal when changing filters and change defective seals.

Machine Maintenance

SERVICE

When cleaning and servicing the machine, you must switch off the machine and remove the plug from the socket.

- Avoid cleaning with a high pressure cleaner.
If necessary, do not direct nozzle at the openings on the machine, especially the opening for cooling air.
- Before moving the machine from the work area, the machine must be cleaned.
- All other equipment must be regarded as contaminated and be treated thereafter.
- If possible, use a special suitable room.
- Proper personnel protective equipment must be used.
- All parts which are contaminated after service must be properly disposed of in plastic bags according to all regulations.
- If the machine has to be used for other purposes, it is extremely important that the machine is cleaned, to avoid the spread of hazardous dust.

Accessories

To avoid long down time on the dust collector, National recommends stocking the following parts and quantities.

Part Number	Part	Stock
1276008	Bag (25-pcs)	1
1376013	Longopac (4-pcs)(option)	1
201000016	Main filter	1
200700070a	HEPA 13 filter	1

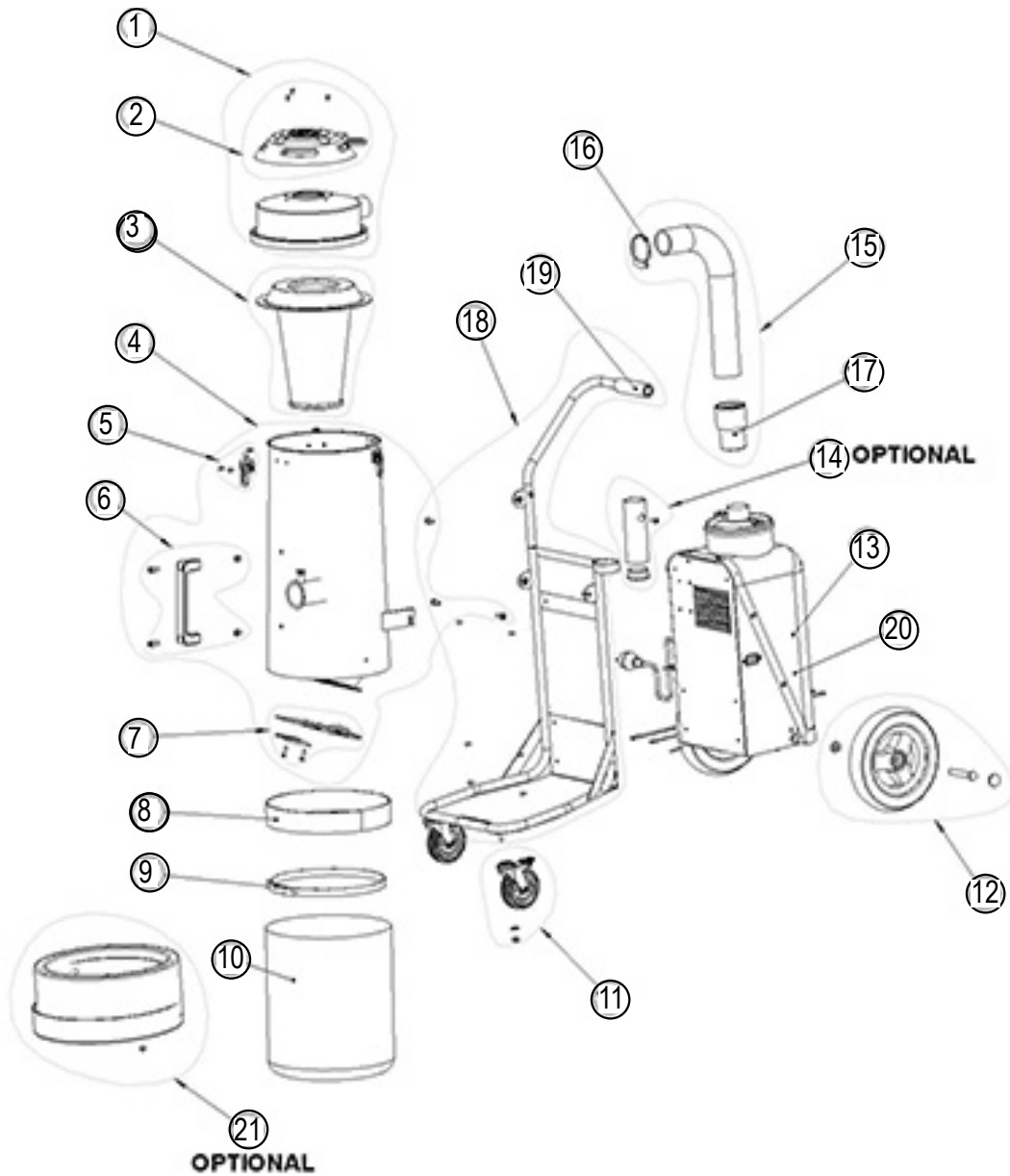
Troubleshooting Guide

This machine is designed and manufactured for a severe environment and tasks. Filter, seals, attachments, and connections are carefully adapted and selected with regard to the operator's work environment, but the operator and service personnel must treat the machine with care in order for it to work correctly.

Problem	Cause	Solution
Motor stops immediately after starting.	Wrong fuse	Connect to correct fuse
Motor does not start.	1. No Power 2. Cable Defective 3. Switch Defective	1. Connect the machine 2. Replace defective cable 3. Replace defective switch
Motor stops immediately after starting.	Wrong fuse	Connect to correct fuse
Motor runs but there is no suction.	1. Hose not connected 2. Hose Blocked 3. No plastic bag	1. Connect hose 2. Clean hose 3. Fit plastic bag
Motor runs but suction is poor.	1. Hole in the hose 2. Filter blocked 3. Top cover loose 4. Sealing Defective	1. Change hose 2. Change filter 3. Adjust 4. Change current seal
Dust blows from motor.	Filter loose or defective	Adjust or change
Abnormal noise.		Order service

Parts List and Diagrams

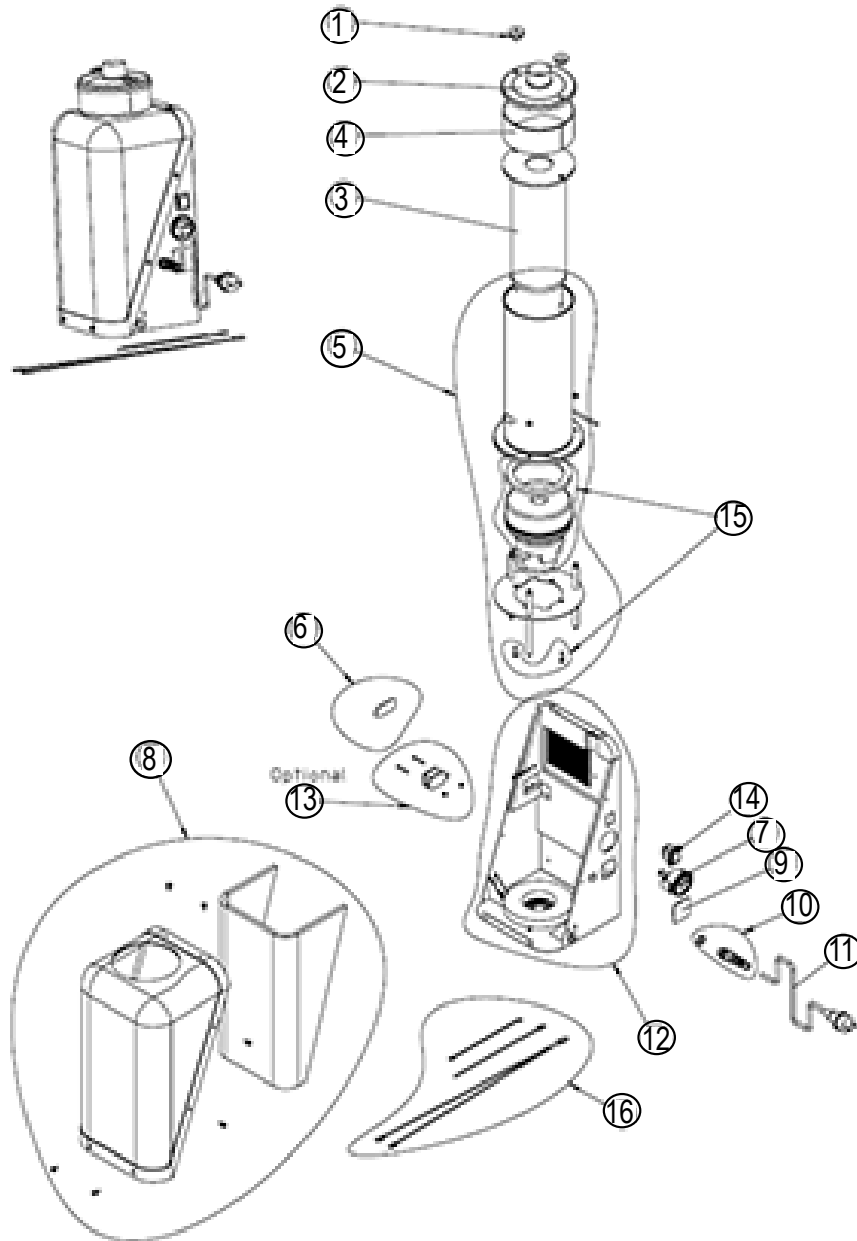
INTERNAL PARTS



PART#	DESCRIPTION	QTY	PART#	DESCRIPTION	QTY		
1	201000117	TOP COVER ASSEMBLY	1	12	200800151	REAR WHEEL KIT(2x)	1
2	201000118	CLEANING UNIT KIT	1	13	N/A	ENGINE PACK 230V	1
3	201000016	MAIN FILTER	1	14	201000122	CLIP HOLDER KIT	1
4	201000119a	TANK COMPLETE	1	15	201000123	HOSE KIT	1
5	200600799	HOLDER KIT	3	16	200800158	HOSE CLAMP PLASTIC 60-65MM	1
6	201000120	HANDLE KIT	1	17	1335011	HOSE END	1
7	201000116	FLAP KIT	1	18	201000124	WAGON COMPLETE	1
8	1351145	ANTI-SKID	1	19	1345012	HANDLE	1
9	1371001	BELT	1	20	200600398a	ENGINE PACK 120V	1
10	1276008	PLASTIC BAG	1	21	201000115	LONGOPAC SET	1
11	200800152	FRONT WHEEL KIT(2x)	1				

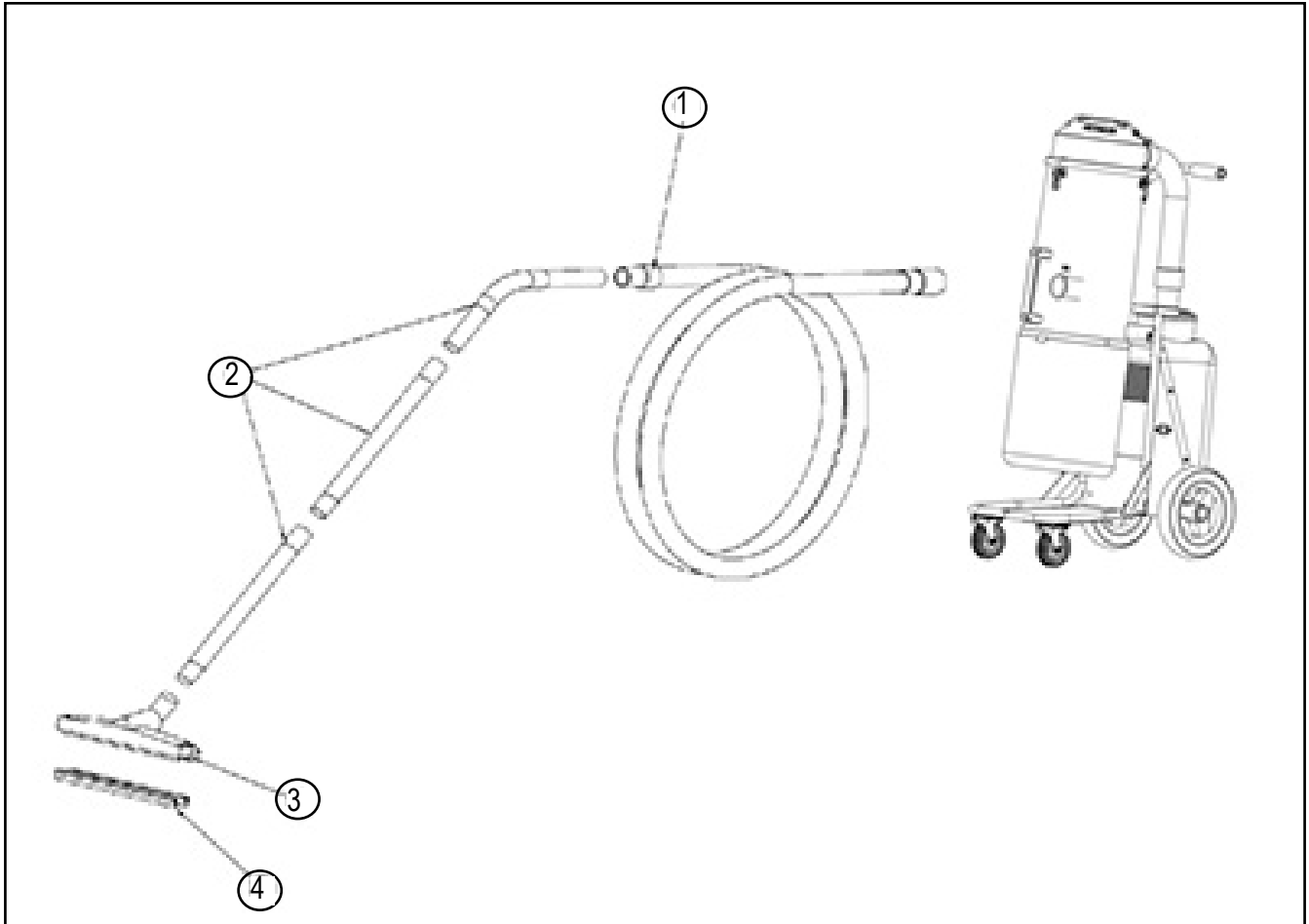
Parts List and Diagrams

EXTERNAL PARTS



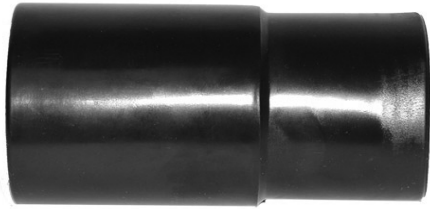
PART#	DESCRIPTION	QTY	PART#	DESCRIPTION	QTY		
1	200700289	LETTER NUT	2	9	1370019	COVER	1
2	200700147	FILTER COVER	1	10	1362184	CABLE FIX	1
3	200700070	MICRO FILTER	1	11	1361025	CORD SET	1
4	200600080	SEALING	1	12	201000134	CHASSI, COMPLETE	1
5	200600084h	ENGINE TUBE	1	13	201000133	COUNTER KIT	1
6	201000148	COUNTER COVER	1	14	6362109	SWITCH	1
7	200700413	MANOMETER KIT	1	15	201000138	120V MOTOR KIT	1
8	200600482	ENGINE COVER, KIT	1	16	200700396	CABLE KIT	1

Parts List and Diagrams



PART#	DESCRIPTION	QTY
1 200900281	HOSE 38mm x 4m	1
2 6324034	KC004 SUCTION PIPE	1
3 1326054	GRD370 FLOOR TOOL	1
4 1340011	D370A RUBBER BLADES	1

HOSE TO VAC CONNECTOR



3472-1335007

Connector, Vacuum, Hose End, 2" to 1.5"

WAND TO HOSE CONNECTOR



3472-1335006

Connector, Wand to Hose

MAIN FILTERS



3472-201000016

Replacement Main Polyester Filter for 3472

3472-200700070A

Replacement HEPA Filter for 3472

REPLACEMENT PLASTIC BAGS



3472-1276008

Replacement plastic bags 25 pack

Warranty

National Flooring Equipment Inc. (referred to as "the Company") warrants that each new unit manufactured by The Company, to be free from defects in material and workmanship in normal use and service for a period of twelve (12) months from date of shipment from the Company. For administrative ease, will honor warranty for a period of fifteen (15) months from date of shipment from the company. Accessories or equipment furnished and installed on the product by the Company but manufactured by others, including but not limited to: engines, motors, electrical components, transmissions etc., shall carry the accessory manufacturers own warranty. Battery warranties are prorated over the warranty period. Customer is responsible for the inspection of equipment / parts upon delivery. Freight damages reported beyond authorized time frame will not be honored.

The Company, at its determination of defect, will repair or replace any product or part deemed to be defective in material or workmanship within specified warranty time period. All product determinations and / or repairs will take place at the designated Company repair facility, or at a certified warranty location designated by the Company. The Company will coordinate and be responsible for all freight expenses associated with valid warranty claims. Freight and shipping expenses associated with abuse or misuse will be back charged to the Distributor/Customer. The Company reserves the right to modify, alter or improve any part / parts without incurring any obligation to replace any part / parts previously sold without such modified, altered or improved part / parts. In no event shall the seller or manufacturer of the product be liable for special, incidental, or consequential damages, including loss of profits, whether or not caused by or resulting from the negligence of seller and / or the manufacturer of the product unless specifically provided herein. This warranty shall not apply to any products or portions there of which have been subjected to abuse, misuse, improper installation or operation, lack of recommended maintenance, electrical failure or abnormal conditions and to products which have been tampered with, altered, modified, repaired, reworked by anyone not approved or authorized by the Company or used in any manner inconsistent with the provisions of the above or any instructions or specifications provided with or for the product. Any and all unauthorized onsite warranty work conducted by unauthorized personnel or any outside person(s), is not covered by the Company unless the work has been pre-authorized by a predetermined manufacturer representative. This excludes wearable parts and/or consumables.

Defective or failed material or equipment shall be held at the purchaser's premises until authorization has been granted by the Company to return or dispose of defective products. Products returned for final inspection must be returned with a manufacturer authorized Return Material Authorization (RMA). Any unauthorized return of equipment will be declined at the dock by the Company. Any non-approved items returned with approved returned items are subject to rejection and will not be credited. Credit will be issued for material found to be defective upon the Company's inspection based on prices at time of purchase.

To obtain a Material Safety Data Sheet and/or a copy of the CE Declaration of Conformity please contact National. This product is CE compliant.

TO OBTAIN SERVICE CONTACT NATIONAL FLOORING EQUIPMENT, INC. TOLL FREE AT 800-245-0267 FOR A REPAIR AUTHORIZATION NUMBER. COD FREIGHT RETURNS WILL NOT BE ACCEPTED. FREIGHT COLLECT SHIPMENTS WILL NOT BE ACCEPTED. WARRANTY REPAIRS MUST BE ACCOMPANIED BY DATE OF PURCHASE RECEIPT AND A RETURN/ REPAIR AUTHORIZATION NUMBER.

RETURN/REPAIR AUTHORIZATION NUMBER: _____

MACHINE SERIAL NUMBER: _____



Made in America Since 1968

9250 Xylon Avenue N • Minneapolis, MN 55445 • U.S.A.
Toll-free 800-245-0267 • Phone 763-315-5300 • Fax 800-648-7124 • Fax 763-535-8255
Web Site: www.nationalequipment.com • E-Mail: info@nationalequipment.com