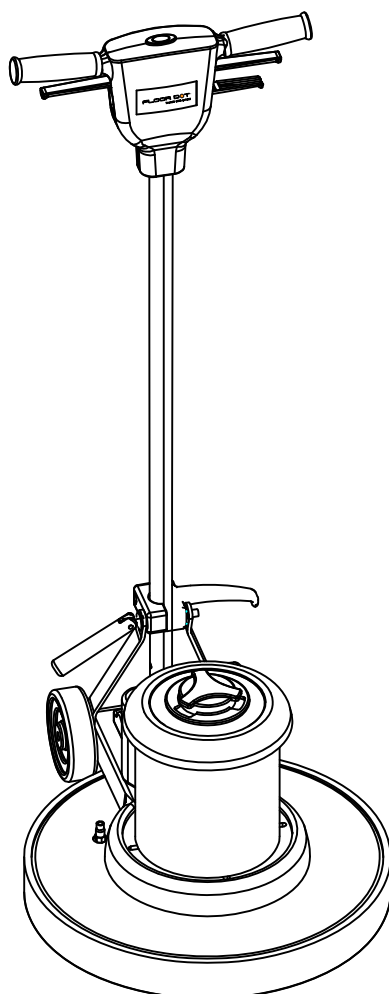


# OWNERS MANUAL

IMPORTANT: READ OWNERS MANUAL CAREFULLY



MODEL #

03-2180

SERIAL #

Floor Dot Corp.  
1650 Horizon Parkway  
Suite 200  
Buford, GA 30518

Phone: (404) 592 1230  
Fax: (404) 592 1233

# FLOOR DOT®

install with pride!

## TABLE OF CONTENTS

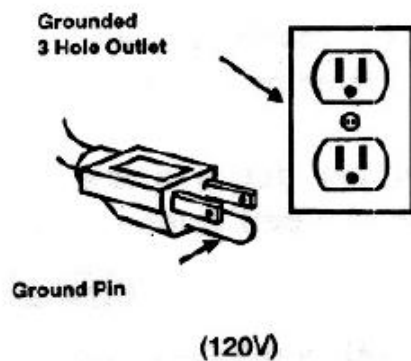
Safety Precautions	3
Machine Operation	4
Machine Maintenance & Storage	4
Parts List	5 - 9
Wiring Diagram	10

# SAFETY PRECAUTIONS

## GROUNDING INSTRUCTIONS

General –This floor – finishing machine shall be grounded while in use to protect the operator from electric shock. The machine is provided with a three –conductor cord and a three contact grounding type attachment plug to fit the proper grounding type receptacle. The green [or green and yellow] conductor in the cord is the grounding wire. Never connect this wire to other than the grounding pin of the attachment plug.

This machine is for use on a nominal 120-Volt circuit and has a grounding plug that resembles the plug illustrated in figure below. Make sure that the machine is connected to an outlet having the same configuration as the plug. No adapter should be used with this machine.



This machine is intended for Commercial use. It is constructed for use in an indoor environment and is not intended for any other use. Use only recommended accessories.

All operators shall read, understand and exercise the following safety precautions:

1] Do not operate machine:

- Unless trained and authorized.
- Unless you have read and understand operators manual.
- In flammable or explosive areas.
- With a damaged cord or plug.
- If not in proper operating condition.
- In outdoor areas.
- In standing water.
- With the use of extension cords.

2] Before operating machine:

- Make sure all safety devices are in place and operate properly.

3] When using machine:

- Do not run machine over cord.
- Do not pull machine by cord or plug.
- Do not pull cord around sharp edges of corners.
- Do not unplug by pulling on the cord.
- Do not stretch cord.
- Do not handle plug with wet hands.
- Keep cord away from heated surfaces.
- Report machine damage or faulty operation immediately.

4] Before leaving or servicing machine:

- Turn off machine.
- Unplug cord from outlet.

5] When servicing machine:

- Unplug cord from outlet.
- Use manufacturer supplied or approved replacements parts.

# Operation of Floor Machines

\* READ OPERATORS MANUAL THOROUGHLY PRIOR TO OPERATING OR SERVICING THIS MACHINE.

## GENERAL USE

1. Remove any obstructions or other obstacles in the area which is to be cleaned.
2. Place the handle in the upright position and tilt machine back until handle rests on the floor.
  - \* Be sure the machine is not plugged into an outlet.
3. Attach the pad driver or brush to the machine by placing the clutch plate over the gearbox hub and turning the driver / brush ¼ turn.
4. Place machine back into its upright position.
5. Plug power cord into a grounded outlet.
  - \* Never use an extension cord in conjunction with the standard power cord.
6. The handle height may be adjusted by lifting up the compression handle which is located on the right side of the handle tube about 1 foot above floor level. Release the compression handle and adjust handle to safe operating height, then push back down on the compression handle to lock the handle in operating position.
7. To start the machine, press the red safety button on the top of the upper switch housing, and then squeeze either of the operating triggers. (the safety button must be depressed prior to squeezing the operating triggers.)
8. When the machine is in operation, both hands should be placed on the switch housing (upper handle).
9. During operation, to make the machine go right, gently raise the handle. To make the machine go left, gently lower the handle.

10. To stop the machine at any time, simply release the operating trigger(s) and the machine will stop automatically.

## MAINTENANCE

To keep the machine performing well for many years, please follow the following maintenance procedures.

\* Always confirm that the machine is unplugged prior to performing any maintenance or repairs.

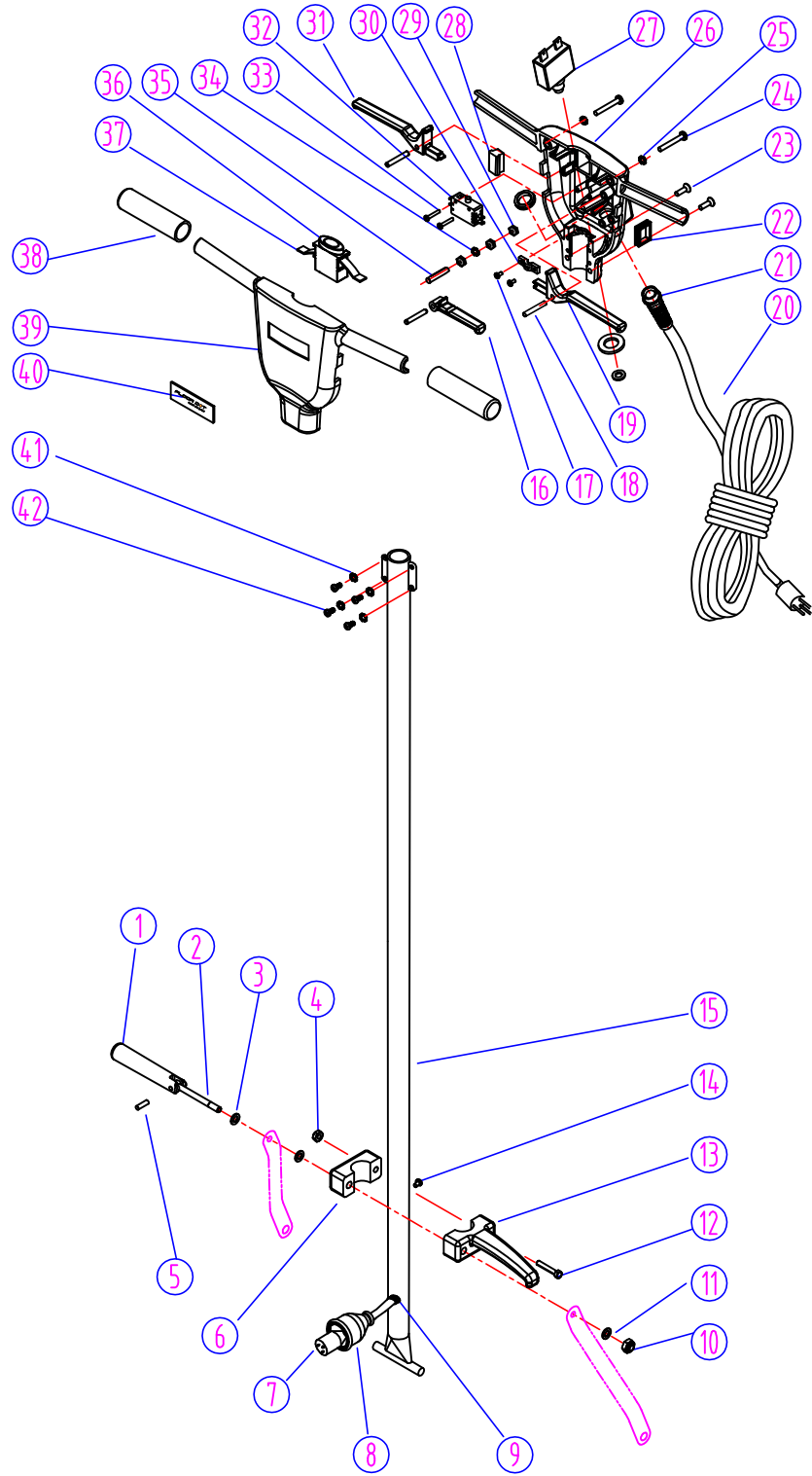
1. Unplug machine as soon as you are done using it.
2. Tilt machine back and remove pad driver or brush.
  - \* Never store a low speed machine with the pad driver or brush mounted to the machine.
3. Clean the outside of the machine with a mild cleaner.
4. Check power cord for any damage. If damage is detected, replace power cord immediately.
5. Lubricate wheels with a water resistant lubricant once a month.
6. Check machine for loose or missing nuts and bolts, and replace as necessary.
7. If the machine is used in a dusty environment, you may remove the motor cover and blow the motor clean with compressed air. This will ensure proper ventilation, and allow the motor to run cooler.

## STORAGE

1. Unplug machine from power source and wrap cord on handle.
2. Tilt machine back and remove pad driver or brush.
3. Store machine in upright position and in a dry area.

# PARTS LIST

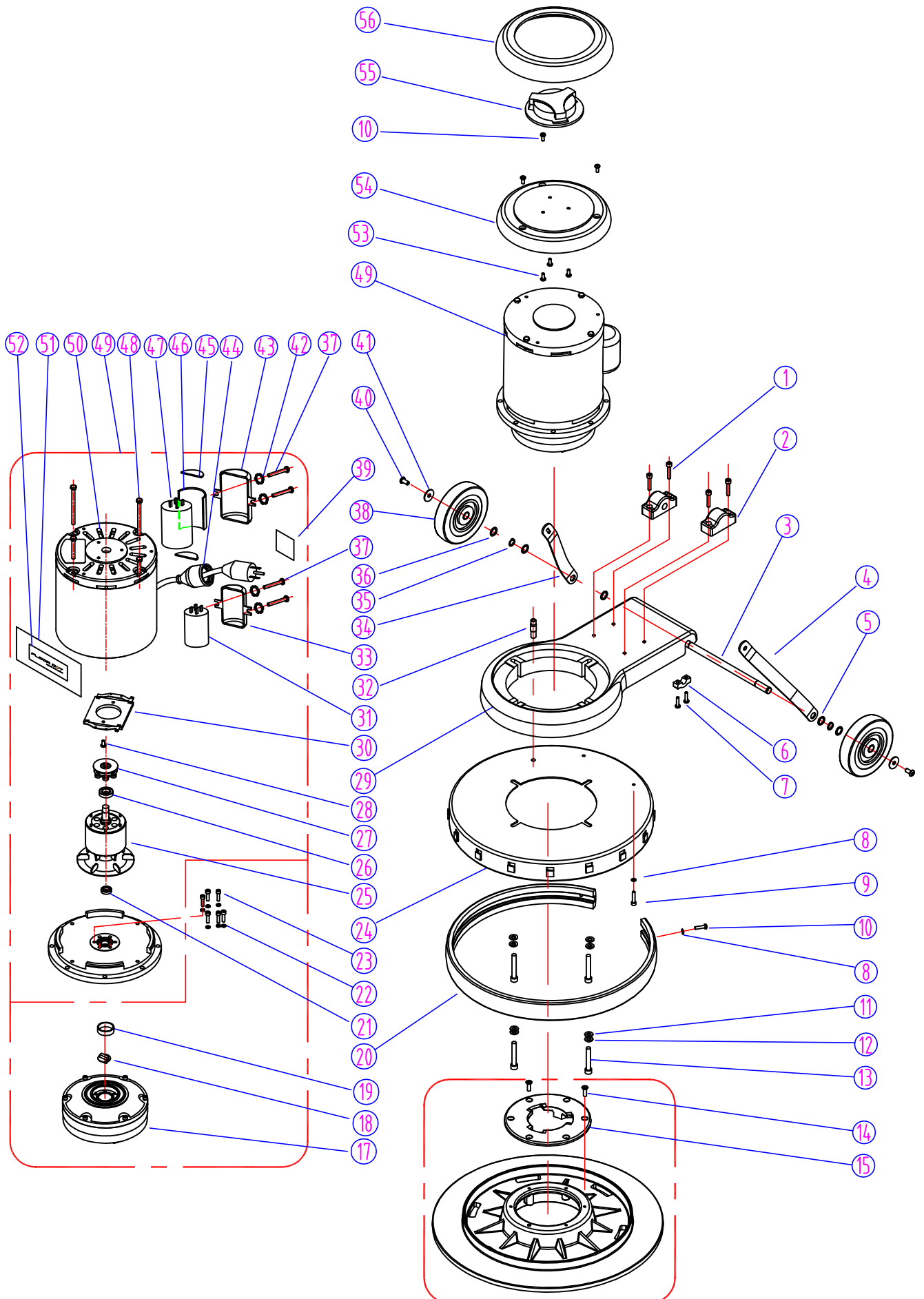
## HANDLE GROUP FOR 03-2180



HANDLE GROUP FOR 03-2180

DIA NO	PART NUMBER	DESCRIPTION	NO REQ'D
1	30016	HANDLE RELEASE	1
2	30015	BOLT, HANDLE RELEASE	1
3	30018	WASHER, PLAIN	2
4	13503	NUT, LOCK, M8 X 5.7	1
5	30017	SCREW	1
6	30014	COVER, HOOK	1
7	45125	CORD, HANDLE	1
8	41901	PLUG PROTECTOR, SMALL MALE	1
9	50120A	GROMMET	1
10	13504	NUT, LOCK, M10	1
11	30027	WASHER, PLAIN	1
12	14114	SCREW, M8 X 55	1
13	30013	HOOK, CORD	1
14	13493	SCREW, M6 X 10	1
15	112205	TUBE	1
16	44018	LEVER,SOLUTION	1
17	13667	SCREW, M4 X 8	2
18	48306	PIN	3
19	44016	LEVER, LEFT, SWITCH	1
20	45119	CORD, POWER SUPPLY	1
21	22009	STRAIN RELIEF, CORD	1
22	30108	GASKET, HANDLE, SOLUTION	1
23	14223	SCREW, M6 X 25	2
24	14218	SCREW, M6 X 45	2
25	13528	WASHER, TOOTH, M6	2
26	30102	REAR COVER, SWITCH HOUSING	1
27	99010C	BREAKER, CIRCUIT, 17A	1
28	30109	COVER	1
29	13013	NUT, M4	3
30	48309	CLAMP BLOCK	1
31	44017	LEVER, RIGHT, SWITCH	1
32	44203	SWITCH ASSEMBLY	1
33	14212	SCREW, M3 X 25	2
34	13527	WASHER, TOOTH, M4	1
35	13526	SCR EW, M4 X 30	1
36	46705	SAFETY BUTTON	1
37	40218	SPRING, SAFETY BUTTON	1
38	48310	HANDLE GRIP	2
39	30101	FRONT COVER, SWITCH HOUSING	1
40	47035A	FLOOR DOT LOGO	1
41	13604	WASHER, TOOTH, M5	4
42	14222	SCREW, M5 X 12	4

BASE GROUP FOR 03-2180



BASE GROUP FOR 03-2180

DIA NO	PART NUMBER	DESCRIPTION	NO REQ'D
1	13080	SCREW, M6 X 30	4
2	30011	CLAMP BLOCK, HANDLE	2
3	30026	AXLE	1
4	30020	BRACKET, LEFT HANDLE	1
5	20274	WASHER, PLAIN, M13	4
6	40235	CLAMP BLOCK, AXLE	2
7	13621	SCREW, SELF-TAPPING, ST, M5 X 20	4
8	13474A	WASHER, PLAIN, M5	4
9	13613	SCREW, M5 X 20	2
10	13474	SCREW, M5 X 16	5
11	13524	WASHER, PLAIN, M8	4
12	13519	WASHER, LOCK, M8	4
13	14114	SCREW, M8 X 55	4
14	002-4A	SCREW, SELF-TAPPING, 1/4"-1"	6
15	03-2180-1	CLUTCH PLATE	1
17	999802B	GEAR BOX	1
18	99021	COUPLER	1
19	01102	SLEEVE	1
20	30004	2015- BUMPER, 20-INCH	1
	30005	1715 - BUMPER, 17-INCH	1
21	999821A	BEARING,6002 LLU	1
22	13601	WASHER, LOCK, M5	6
23	13636	SCREW, M5 X 30	6
24	30006	2015 - FRAME, 20-INCH	1
	30006A	SHROUD & BUMPER ASSY, 20-INCH	1
	30007	1715 - FRAME 17-INCH	1
	30007A	SHROUD & BUMPER ASSY, 17-INCH	1
25	19200B	ROTOR WITH FAN ASSEMBLY	1
26	10501	BEARING,6203 RZ	1
27	12301	CENTRIFUGAL SWITCH	1
28	14549	SCREW, M4 X 10	2
29	30008	ALUMINIUM BASE, MOTOR	1
30	12302	STATIONARY SWITCH	1
31	999854	RUNNING CAPACITOR, 50 $\mu$ F / 370V	1
32	40152	HOSE BARB	1
33	14601	MOUNTING FRAME (SMALL), CAPACITOR	1
34	30019	BRACKET, HANDLE, RIGHT	1
35	13520	WASHER, LOCK	2



BASE GROUP FOR 03-2180

DIA NO	PART NUMBER	DESCRIPTION	NO REQ'D
36	50119	WASHER, PLAIN, M12	2
37	14214	SCREW, M5 X 8	4
38	48202	WHEEL, 5"	2
39	40994	LABEL, READ MANUAL	1
40	44012	SCREW, M6 X 12.7	2
41	13666	WASHER, M6	2
42	13604	WASHER, LOCK, EXTERNAL TOOTH	4
43	10615	MOUNTING FRAME (BIG), CAPACITOR	1
44	41902	PLUG PROTECTOR, LARGE FEMALE	1
45	10414	CLEAR COVER	4
46	10416	CAPACITOR WRAP	2
47	VF999805	START CAPACITOR (BIG), 380-400 $\mu$ F / 150V	1
48	17507	BOLT ASSEMBLY	4
49		SEE #17 & #50	
50	999787	MOTOR, 110V, 1.5HP	1
51	44003	LABEL, MOTOR	1
52	41079	LABEL, VIPER	1
53	14222	SCREW, M5 X 12	3
54	30001	TOP COVER, MOTOR	1
55	30002	CLUTCH PLATE	1
56	47023	BUMPER	1

# WIRING DIAGRAM

---

