

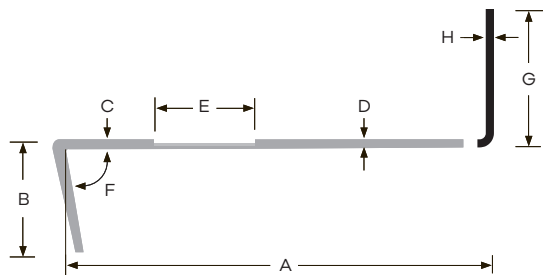
Burke Stairway Systems

Mannington
COMMERCIAL



Cover: ColorSpec® Square - Abyss 045
Above: Linear Series Stair Nosing - Black 701

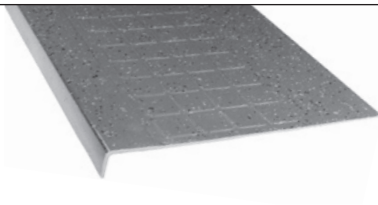
ColorSpec® Stair Treads & Risers



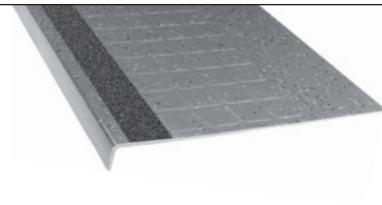
Risers are available in coordinating colors.

Square Profile | Square Nose & Visually Impaired*

- A = 13"
- B = 1.813"
- C = .18"
- D = .13"
- F = 80°
- G = 7"
- H = .125"



- A = 13"
- B = 1.813"
- C = .18"
- D = .13"
- E = 2"
- F = 80°
- G = 7"
- H = .125"



Sculptured Profile | Square Nose & Visually Impaired*

- A = 13"
- B = 1.813"
- C = .18"
- D = .13"
- F = 80°
- G = 7"
- H = .125"



* Refer to architect folder for actual texture and color

- A = 13"
- B = 1.813"
- C = .18"
- D = .13"
- E = 2"
- F = 80°
- G = 7"
- H = .125"



* Refer to architect folder for actual texture and color

Technical Data

PRODUCT	LENGTHS	VI STRIPS	PROFILE
1/8" Square Profile	3', 4', 5', 6'	Optional	Square
1/8" Sculptured Profile	3', 4', 5', 6'	Optional	Sculptured
1/8" Risers (7" height w/toe)	3', 4', 5', 6'	n/a	none
1/8" Risers (6" Cove)	4'	n/a	none
1/8" Skirting (10" toeless base)	4'	n/a	none

Applicable Standards: Treads: ASTM F2169, Type TS, Class 2, Group 1 & 2

Risers & Skirting: ASTM F1861, Type TS, Group 1, Style A & B

Indentation Resistance: ASTM F970 - .000" residual indent at 600 PSI

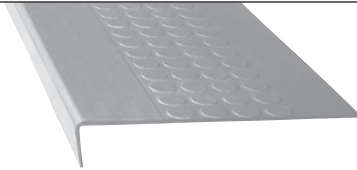
Flame Resistance: ASTM E648, Class 1



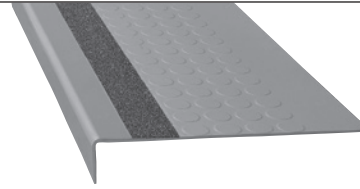
ColorScape® Stair Treads & Risers

Round Profile | Square Nose & Visually Impaired*

A = 13"
 B = 1.813"
 C = .18"
 D = .13"
 F = 80°

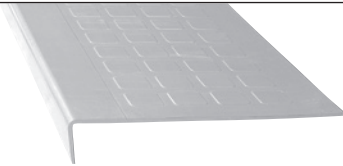


A = 13"
 B = 1.813"
 C = .18"
 D = .13"
 E = 2"
 F = 80°

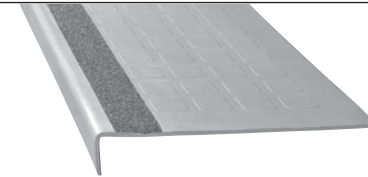


Square Profile | Square Nose & Visually Impaired*

A = 13"
 B = 1.813"
 C = .18"
 D = .13"
 F = 80°

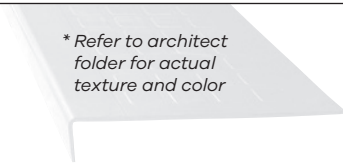


A = 13"
 B = 1.813"
 C = .18"
 D = .13"
 E = 2"
 F = 80°



Sculptured Profile | Square Nose & Visually Impaired*

A = 13"
 B = 1.813"
 C = .18"
 D = .13"
 F = 80°



** Refer to architect folder for actual texture and color*

A = 13"
 B = 1.813"
 C = .18"
 D = .13"
 E = 2"
 F = 80°



** Refer to architect folder for actual texture and color*

Technical Data

PRODUCT	LENGTHS	VI STRIPS	PROFILE
1/8" Round Profile	3', 4', 5', 6'	Optional	Round
1/8" Square Profile	3', 4', 5', 6'	Optional	Square
1/8" Sculptured Profile	3', 4', 5', 6'	Optional	Sculptured
1/8" Risers (7" height w/toe)	3', 4', 5', 6'	n/a	None
1/8" Risers (6" Cove)	4'	n/a	None
1/8" Skirting (10" toeless base)	4'	n/a	None

Applicable Standards: Treads: ASTM F2169, Type TS, Class 2, Group 1 & 2
Risers & Skirting: ASTM F1861, Type TS, Group 1, Style A & B
Indentation Resistance: ASTM F970 - .000" residual indent at modified 600 PSI
Flame Resistance: ASTM E648, Class 1

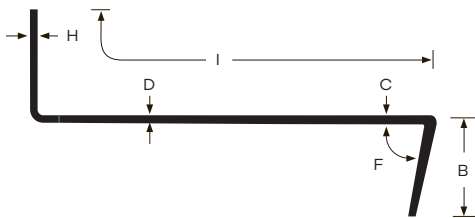




ConnectStep® Single Piece Stair Tread and Riser Combination: Square Nose and Visually Impaired

ConnectStep speeds installation, reduces maintenance and provides a uniform, seamless and contoured look. ConnectStep automatically adjusts for step depths of between 9.5 inches and 13 inches. This also allows

for adjustments to varying riser heights. Available in ColorSpec's Sculptured Profile and ColorScape's Round or Sculptured Profiles with optional VI strip inserts.



B = 1.88"
C = .188"
D = .188"
F = 80°
H = .080"
I = 20"



Superior Rubber Formulation

- Superior indentation resistance, color retention and slip-resistance
- Superior scratch-resistance due to low clay and high pigment content
- Quieter underfoot

Built-in, Long Lasting Migrating Wax

- No wax required, low maintenance option
- Self-waxing feature for superior appearance retention
- Lower life cycle costs

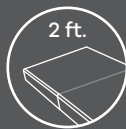
Superior Profile Design

- Profile design allows for enhanced cleanability
- Available with or without visually impaired strip

PERPETUAL:

A SOLUTION TO LONG-WIDTH STAIRWAYS

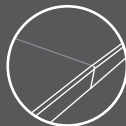
Perpetual Modular Stair Treads are the easy and unique solution to stairways of varying widths.



Delivered in easy-to-install two-foot lengths, Perpetual eliminates the costly and difficult shipping and handling associated with long stair treads.



The precision molded tread includes an interlocking "tab & pocket" at the ends of the toe to ensure perfect alignment every time.



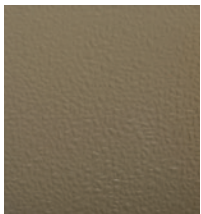
The edges of the tread are molded to provide a seamless appearance, eliminating the unsightly seams that result from butted treads.

Perpetual Stair Tread

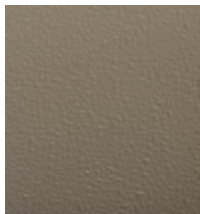
Simply install the number needed to create any length of tread, quickly and easily.

Eliminate costly and difficult shipping and handling associated with long stair treads.

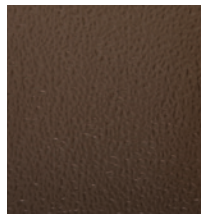
Available in **6 solid** and **6 speckled** colors.



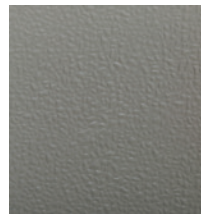
503 Ginger



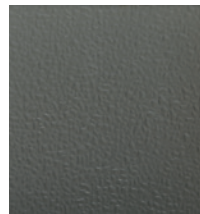
527 Clay



502 Brown



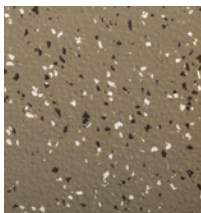
204 Gray



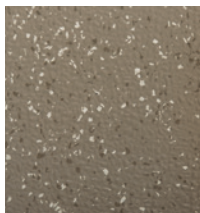
217 Charcoal



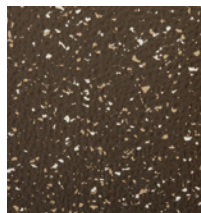
701 Black



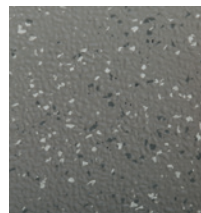
862 Canyon



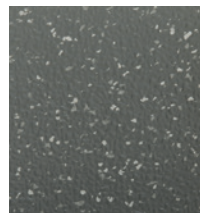
042 Kaolin



041 Terrain



034 Flint



047 Nimbus

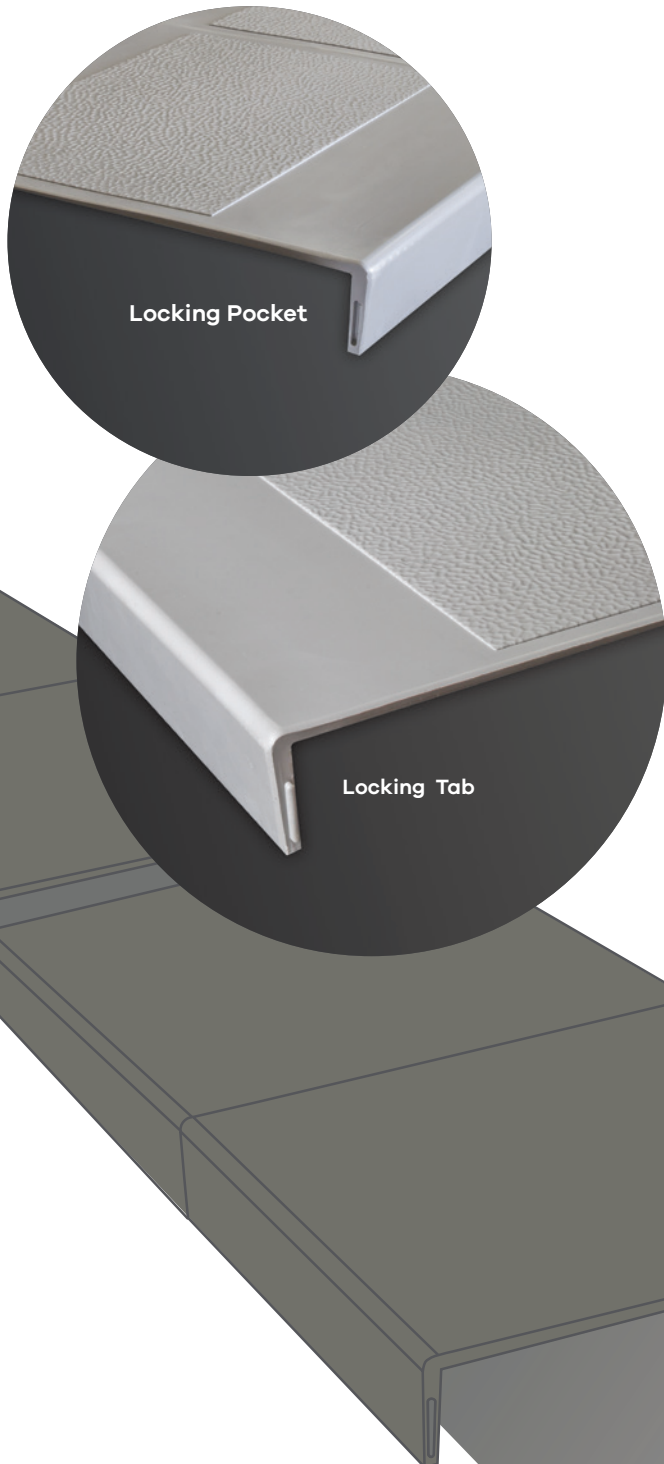


045 Abyss



Taped Treads

Key Features



MOLDED EDGES

The edges of the tread are molded to eliminate unsightly seams.

SCULPTURED PATTERN

Advanced style: each 24" length of Perpetual has a sculptured visual with a 12" repeat that mimics the joint, giving the impression of a uniform, continuous tread.

DESIGN GROOVING

Design grooves assist in creating a repeating pattern that camouflages the field joint and allows the installer to cut into one-foot lengths when required for odd lengths.

TREAD NOSE

The tread nose on Perpetual is the most durable one we have ever offered. No nose filler is required.

This significant feature makes installation even faster, easier and cleaner, while delivering treads with an advanced level of performance.

LOCKING TAB AND POCKET

Molded with an interlocking tab and pocket on either end of the toe to ensure perfect alignment, every time.

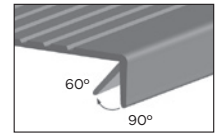
TAPED TREADS

Factory-taped treads are also available for visual impairment requirements.

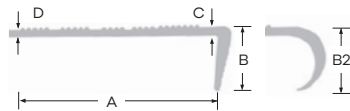
Linear Series

Flexible Nose For Easy Compliance

All Linear Series Stair Treads have a notch behind the nose for increased flexibility. The ADA requires nosing angles to be between 60° and 90° from the horizontal. This product modification will allow the nosing position of these products to more easily conform to the steps' nosings that have been built to the severest angle allowed by the ADA (60°).

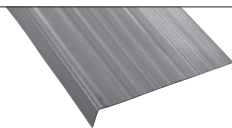


ADA



Commercial 250 - Heavy Traffic | Vinyl & Rubber

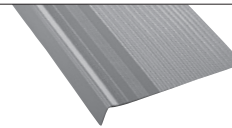
- A = 12"
- B = 1.625"
- B2 = 1.5"
- C = .25"
- D = .125"



Six-Grip Strip

Commercial 210 - Normal Traffic | Vinyl Only

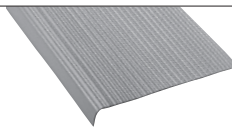
- A = 12"
- B = 1.5"
- C = .21"
- D = .125"



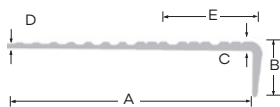
Pyramidal Gripper
Square Nose Only

Commercial 150 - Light Traffic | Vinyl Only

- A = 12"
- B = 1.5"
- C = .15"
- D = .125"



Full Depth
Corrugation



Maxxi-Tread | Vinyl & Rubber Stair Treads

Design: Contrasting Color Cleats



Gray with
Black Stripes



Fudge with
Tan Stripes



Black with
Gray Stripes

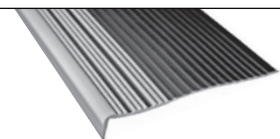


Charcoal with
Black Stripes



Charcoal with
Gray Stripes

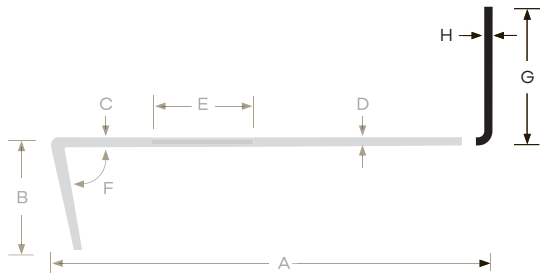
- A = 13"
- B = 2"
- C = .25"
- D = .125"
- E = 4.25"



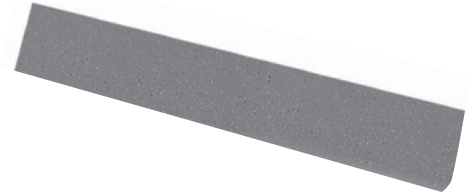
Available in 5 predetermined color combinations with cleats for maximum slip-resistance as shown. Also, any color combination of the 36 Accord tread colors can be special ordered; minimum quantities apply.



Risers



Risers are available in coordinating colors.



Technical Data

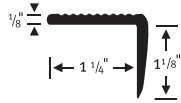
PRODUCT	LENGTHS	VI STRIPS	PROFILE
1/8" Risers (7" height w/toe)	3', 4', 5', 6'	n/a	Smooth
1/8" Risers (6" Cove)	4'	n/a	Smooth

Stair Nosings

510 Top-Set Nosing (Square Nose)

Covers leading edge of step. May be used over vinyl and sheet goods.

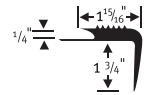
Packing: 20-12' secs., 240 lin. ft. per carton



570 Superior Carpet Stair Nosing

Friction-Grip nosing for use when only step is covered. Undercut for 1/4" and 5/16" carpet.

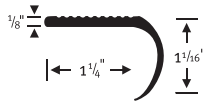
Packing: 10-12' secs., 120 lin. ft. per carton



511 Top-Set Nosing (Round Nose)

Covers leading edge of step. May be used over vinyl and sheet goods.

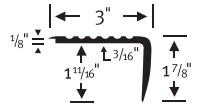
Packing: 20-12' secs., 240 lin. ft. per carton



575 Overlap Stair Nosing

Nosing with deep grooves and overlap lip. Accepts material to 1/8" with lip, to 3/16" without lip.

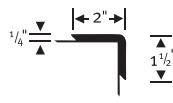
Packing: 10-12' secs., 120 lin. ft. per carton



560 Double Butt Carpet Stair Nosing

For square nose step. Double butt edge; smooth surface; accommodates step and riser. For 1/4" carpet installations.

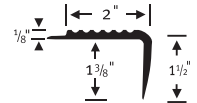
Packing: 10-12' secs., 120 lin. ft. per carton



580 Commercial Step Nosing

Square step nosing for 1/8" material. Ribbed surface.

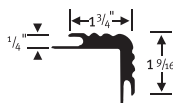
Packing: 10-12' secs., 120 lin. ft. per carton



565 Double Undercut Carpet Stair Nosing

For 1/4" and 5/16" carpet. Accommodates step and riser; with ribbed surface.

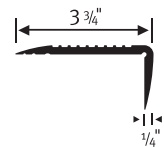
Packing: 10-12' secs., 120 lin. ft. per carton



585 Top-Set Nosing for 1/4", 1/8" or .080" Material

Ribbed surface nosing can be cut along pre-grooved channels to adjoin 1/4", 1/8" or .080" resilient flooring materials.

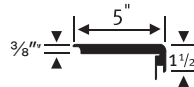
Packing: 10-12' secs., 120 lin. ft. per carton



566 Double Undercut Carpet Nosing 3/8"

Accommodates 3/8" Multi-Purpose resilient flooring or carpet on both step and riser.

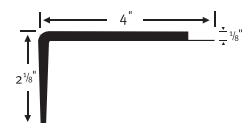
Packing: 4-12' secs., 48 lin. ft. per carton



ESN Stair Nosing

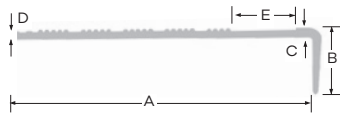
Deep reach nosing for top step or landing area installations. Butts to 100" or 1/8" flooring.

Packing: 10-12' secs., 120 lin. ft. per carton



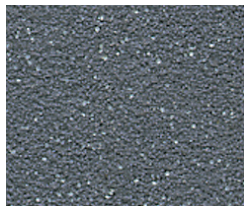
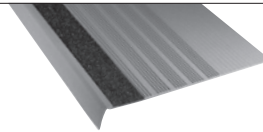
Visually Impaired Treads & Nosings

Visually Impaired Safety Treads meet California Disabled Access Regulation, Title 24, Section 3306 for the visually impaired when used with contrasting strip color. Available in any of the 36 Accord System colors and the 10 Abrasive Strip Insert colors below. Tape may be ordered separately for onsite installations.

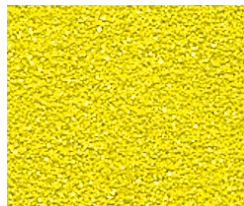


Design: 2" (50.800 mm) Abrasive Strip

A = 12"
 B = 1.625"
 C = .25"
 D = .125"
 E = 2"



Gray



Yellow



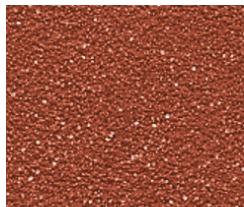
White



Orange



Red



Brick



Brown



Black



Hazard



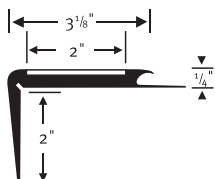
Photoluminescent

Visually Impaired Safety Nosings

557 Visual Safety Nosing

Contrasting insert for Visually Impaired. Accepts 1/4" with lip. Pick a color for the nosing and the strip in any interchangeable combination of the 36 Accord colors.

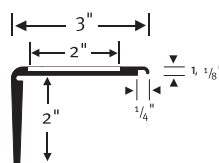
Packing: 6-12' secs., 72 lin. ft. per carton



577 Visual Safety Nosing for 1/8" Material

Contrasting color insert for Visually Impaired. Pick a color for the nosing and the strip in any interchangeable combination of the 36 Accord colors.

Packing: 10-12' secs., 120 lin. ft. per carton



578 Visual Abrasive Safety Nosing for 1/8" Material

Visual Abrasive Safety Nosing for 1/8" Material. Pick a color for the nosing from the 36 Accord colors and a color from the 10 abrasive tape colors.

Packing: 10-12' secs., 120 lin. ft. per carton

