



# National Flooring Equipment 25 HP Eng. Pod (top mount version)

P/N 400182

TQC Work Verify

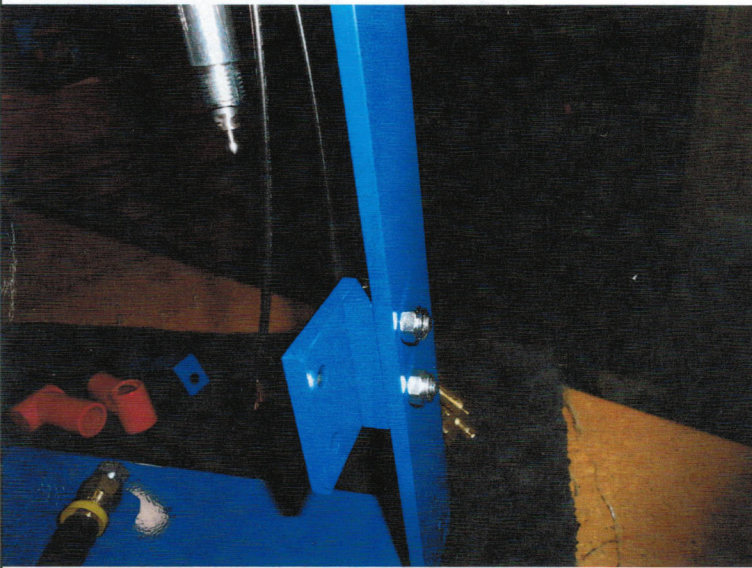
09-15-2012

Rev 1

Author: BJB

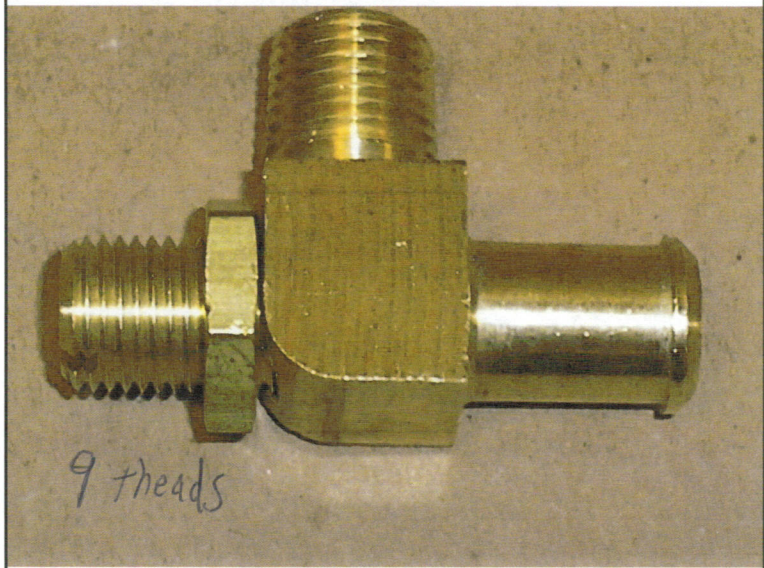
57

Assemble Regulator Mtg. Bracket 5600-53 and Spacer 5600-65 to control frame w/ (2) 73013 bolts and (2) 73008 nylock nuts.



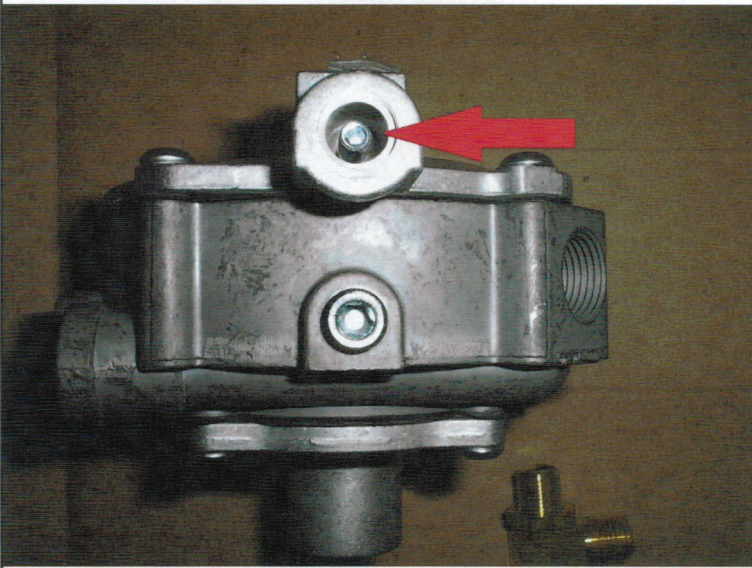
58

Get regulated elbow from Propane Kit. Loosen locknut. Tighten needle valve until lightly seated. Loosen needle valve 5 full turns. Tighten locknut



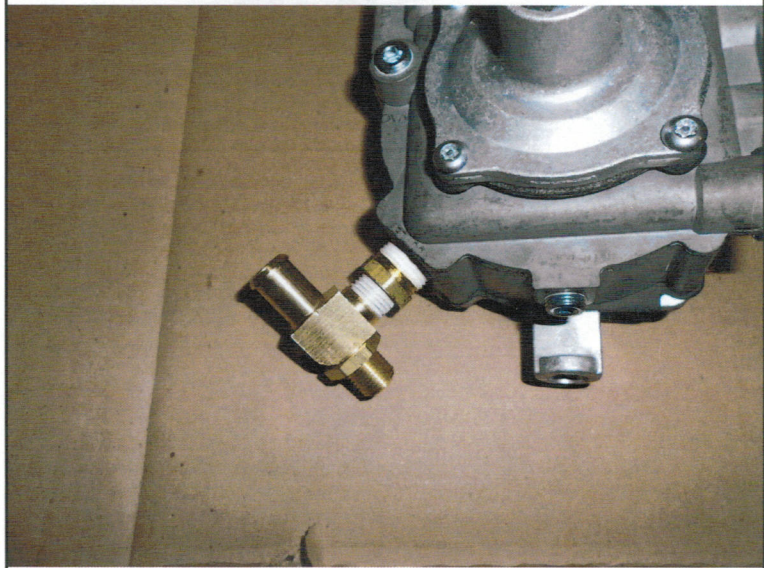
59

Preset regulator. Tighten adjustment screw  $2\frac{1}{2}$  turns.  
*5 1/2 clockwise*



60

Assemble bushing and regulated elbow from Propane Kit to OUTLET of propane regulator. Use teflon tape to seal parts.





# National Flooring Equipment

## 25 HP Eng. Pod (top mount version)

P/N 400182

TQC Work Verify

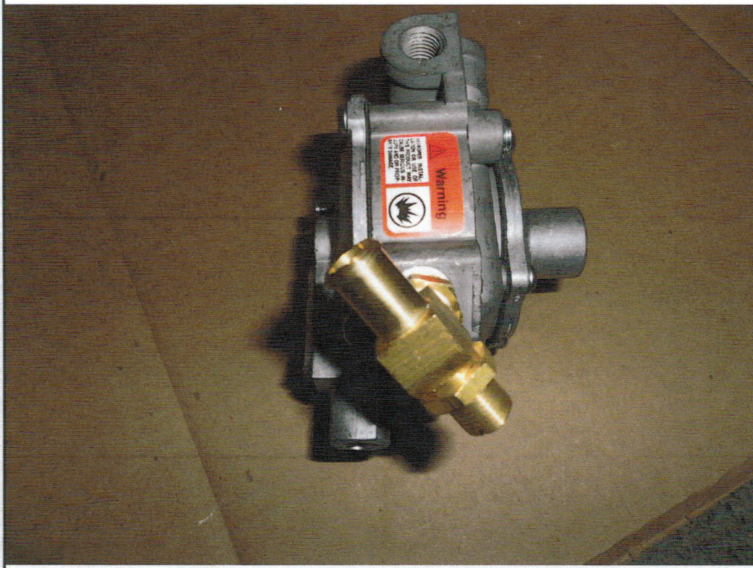
09-15-2012

Rev 1

Author: BJB

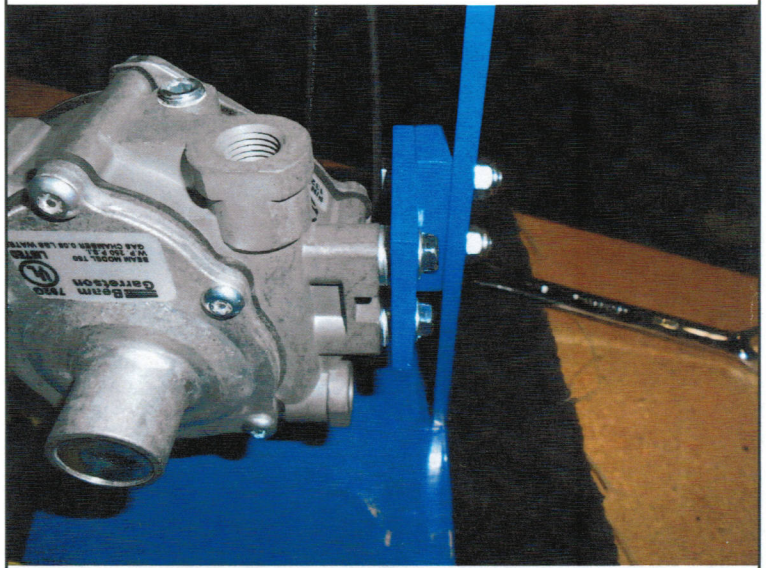
61

Angle fitting to regulator as shown



62

Mount regulator to bracket on control frame with (2) 73027 bolts and (4) 73091 flatwashers. Use flatwashers as spacers, 2 per bolt.



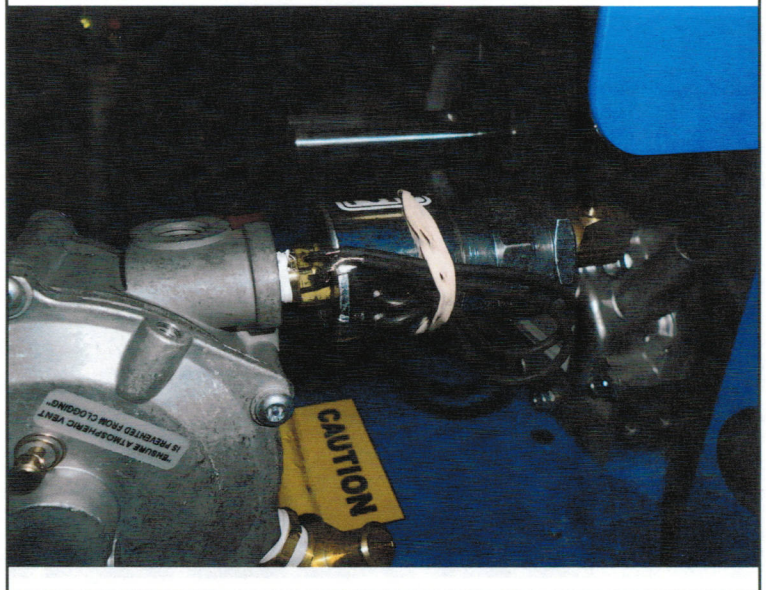
63

Get fuel solenoid from Propane Kit. Crimp #6 ring terminal (from vacuum switch package in Propane Kit) to either lead from solenoid.



64

Assemble solenoid to INLET port on regulator. Use teflon tape. Tighten hex fitting only, do not grip solenoid body to turn. Orient solenoid so leads are facing out.





# National Flooring Equipment 25 HP Eng. Pod (top mount version)

P/N 400182

TQC Work Verify

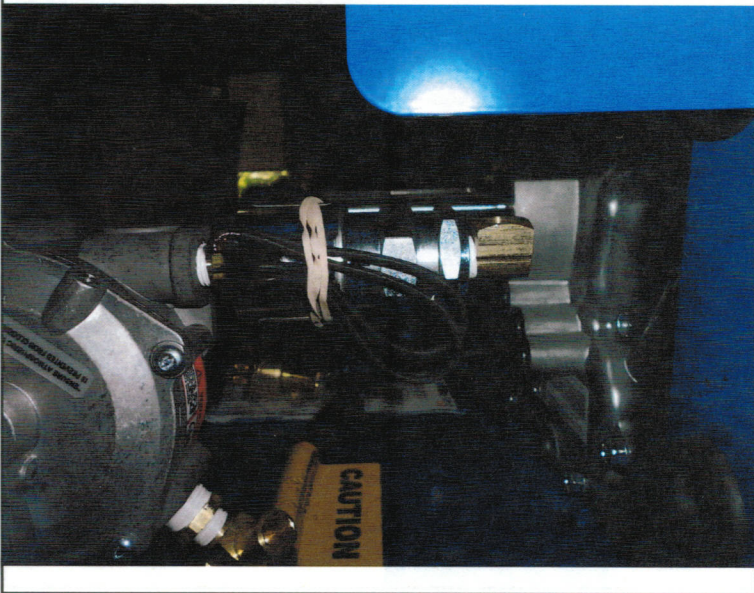
09-15-2012

Rev 1

Author: BJB

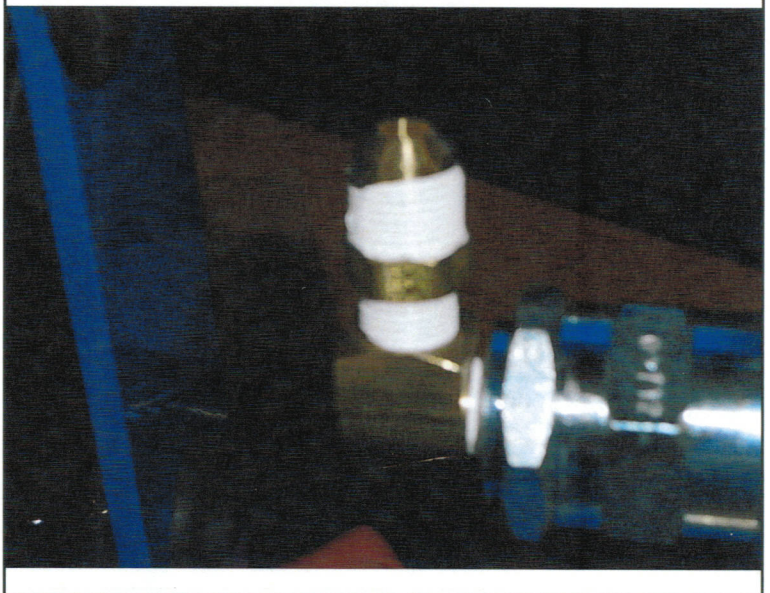
65

Assemble street elbow from kit to inlet of solenoid. Use teflon tape. Orient elbow facing UP when tightened. Do not grip solenoid body.



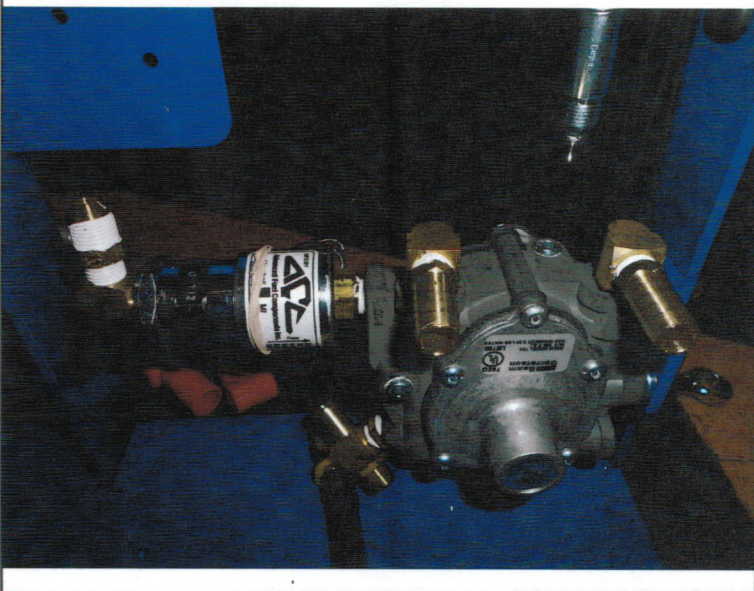
66

Apply teflon tape to pipe thread of fitting 70661. Assemble to elbow on solenoid.



67

Assemble (2) 70659 elbow fittings to coolant ports of regulator. Use teflon tape. Orient fittings toward engine when tightened.



68

Assemble (2) 400180 barb fittings to elbows. Use teflon tape

