

# TECHNICAL MANUAL

CALURA

oligo



PROFESSIONNEL

**TOUJOURS INNOVER | ALWAYS INNOVATE**



Welcome

## THE HEART OF IT

Oligo was created over 35 years ago, in the heart of the Cohen family as well as in the heart of Montréal — so both dedication and savoir-faire just come naturally to us!

**For the first two decades, we poured our family passion into research and development, making sure our laboratory supplied only the most superior hair care products to cosmetic companies around the world. As we honed our expertise, perfecting product development through the discovery and astute use of the best ingredients in the world, we realized we were at the centre of a professional renaissance.**

## THE EVOLUTION OF PROFESSIONAL HAIR CARE

It was time to create our own brand. The vision for Oligo Professionnel was — and remains — the crafting of healthier and safer salon exclusive products made possible by our family's expertise, which we continue to develop with patience and care. Our comprehensive series of products protects both stylist and guest, making each shine! The complex and highly sophisticated technologies used in the Oligo Professionnel series have been tested and re-tested, delivering the kind of performance, reliability, consistency, and excellence only true dedication can provide!

And while Oligo Professionnel enjoys popularity around the globe, an important inspiration remains **our home, Montréal, Canada's fashion and style Capital. At the crossroads of European flair and North American drive...** French sophistication and English directness... the esprit of Montréal can be felt in all our products.

## YOU ARE AT THE HEART OF OUR FUTURE

Oligo Professionnel is equally dedicated to your success. We believe collaboration is central to any partnership based on mutual respect and depth of commitment. As such, we provide training, continuous support and of course, the salon-only Oligo Professionnel line. Our programs take place in salon, to truly customize your experience with us.

We both know that when you touch hair, you touch lives. Together, we can touch people and provide guests with the rewards they so richly deserve. On behalf of my family, I thank you for considering Oligo Professionnel as a brand of choice in your salon.

Yours truly,  
Ilan Cohen  
President, Oligo Professionnel

  
**Proudly Canadian**  
EST. 1986

# TABLE OF CONTENTS

|           |  |           |                            |
|-----------|--|-----------|----------------------------|
| <b>05</b> | Calura Ecosystem                       | <b>20</b> | Mix Series                 |
| <b>06</b> | Calura Permanent                       | <b>21</b> | Clear (Calura Permanent)   |
| <b>07</b> | Technical Features (Calura Permanent)  | <b>22</b> | Pastel                     |
| <b>08</b> | Benefits (Calura Permanent)            | <b>23</b> | Corrective Pre-Colouring   |
| <b>10</b> | Tone Guide (Calura Permanent)          | <b>25</b> | Rising for Success         |
| <b>11</b> | Colour wheel (Calura Permanent)        | <b>26</b> | Oligo Support Tools        |
| <b>12</b> | Underlying Pigments (Calura Permanent) | <b>27</b> | CaluraTEN                  |
| <b>13</b> | Shade Series (Calura Permanent)        | <b>30</b> | Application (CaluraTEN)    |
| <b>14</b> | Developers                             | <b>31</b> | Calura Gloss               |
| <b>15</b> | Developers (Processing Time)           | <b>34</b> | Application (Calura Gloss) |
| <b>16</b> | Application (Calura Permanent)         | <b>35</b> | FAQ (Calura Permanent)     |
| <b>17</b> | White Hair Coverage (Calura Permanent) | <b>36</b> | FAQ (Calura Gloss)         |
| <b>18</b> | 8 Ultra (Calura Permanent)             | <b>37</b> | FAQ (CaluraTEN)            |
| <b>19</b> | Pure Blonde Shades (Calura Permanent)  |           |                            |

# CALURA ECOSYSTEM

Enter the Calura Ecosystem, a comprehensive range of professional colour solutions. Within this dynamic spectrum of choices, you'll uncover the brilliance of Calura Permanent Shine Hair Colour, the efficiency of CaluraTEN 10-Minute Permanent Hair Colour, and the versatility of Calura Gloss Demi-Permanent Liquid Hair Colour. This ecosystem serves as your toolkit for unlocking creativity and delivering exceptional results. Explore the limitless potential that Calura offers, thoughtfully designed to enrich your professional mastery.

CALURA

PERMANENT SHINE HAIR COLOUR

CALURATEN

10 MINUTE PERMANENT HAIR COLOUR

CALURA  
gloss

DEMI-PERMANENT LIQUID HAIR COLOUR



# CALURA

## PERMANENT SHINE HAIR COLOUR

Revolutionary Exothermic Hair Colour with an exclusive technology to achieve radiant shine.

# TECHNICAL FEATURES

Discover the revolutionary permanent shine exothermic hair colour by Oligo Professionnel. Its unique formula featuring the exclusive exothermic technology offers unparalleled, radiant shine.

## Exothermic Technology

The Calura exothermic system is an innovative technology that was designed to maximize dye penetration and minimize hair damage. Each shade was formulated to generate a specific increase in temperature to achieve desired results. The temperature increase varies from about +4°C (+7°F) to about +11°C (+19°F), opening the cuticle gently ensuring optimal dye penetration. As a bonus, this heat allows a thorough penetration of the certified organic essences and keratin found in Calura's unique formula.

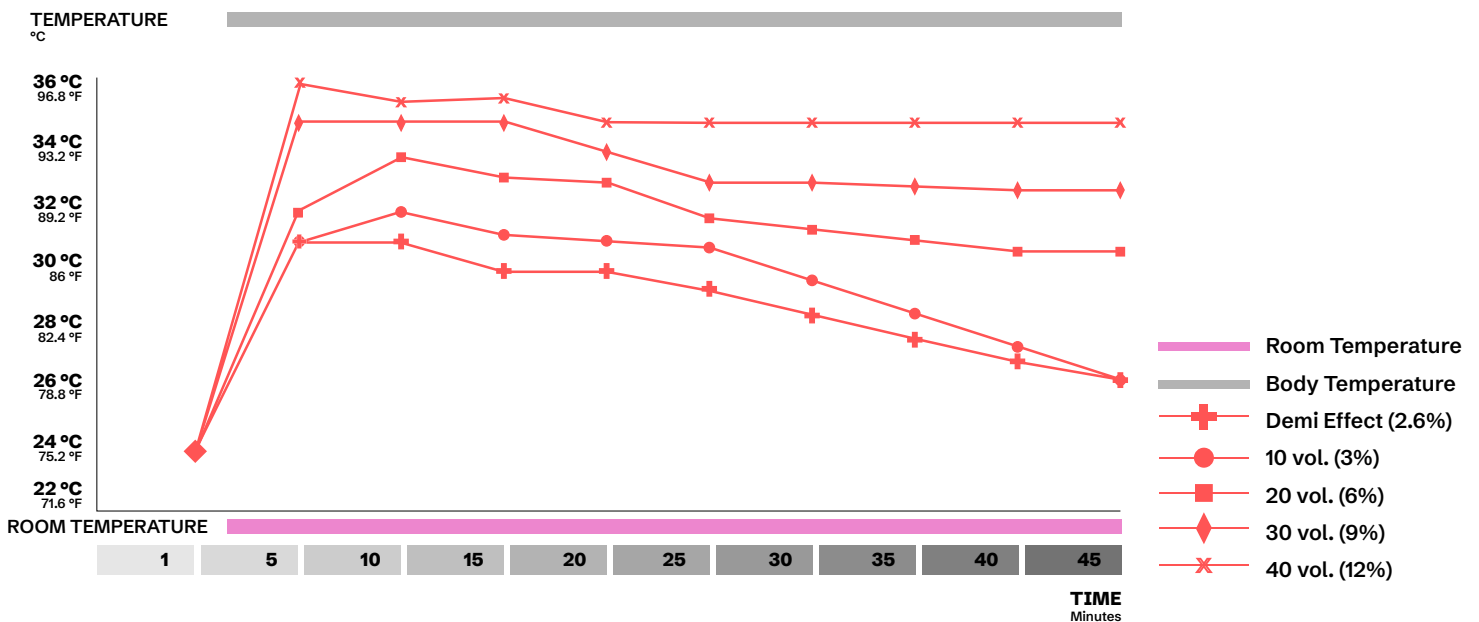
The outcome is unparalleled and radiant shine!

## Benefits

- Offers 100% white hair coverage, even in the case of resistant white hair
- Allows gentle lift up-to 5 levels
- Offers superior dye penetration for uniform results
- Offers superior conditioning of the hair
- Provides a pleasant temperature on the scalp when being applied

## Temperature Vs. Time

COLOUR: 6 Neutral



# BENEFITS

## Ammonia & PPD Free

The era of ammonia based colour is coming to an end. The lingering unpleasant smell ammonia produces in salons is a thing of the past. Now your salon can offer an agreeable, safe and comfortable environment for an all around positive client experience. **Calura** offers unparalleled vibrancy and a reduction in alkaline forces thanks to its exothermic technology.

## Benefits

- Superior shine and conditioning
- Superior scalp comfort
- Pleasant fragrance and better air quality resulting in a healthier salon environment





# BENEFITS

## Pure Certified Organic Essences

The purest organic essences have been carefully selected to be included in Calura's unique formula. These essences have been chosen for their known benefits to the hair and scalp. They are USDA certified ensuring that they are free of contaminants (pesticides, herbicides, solvents). Additionally, organic agriculture farming methods were used to grow and extract these essences, thus respecting the environment.



### Organic Avocado Oil

Natural properties protect against free radicals. Treats the hair fiber. Properties of hydration and porosity equilizer.



### Organic Pomegranate Seed Oil

Antioxidant that helps distribute the pigments uniformly within the cortex. Contributes to the longevity of colour and provides ultimate shine.



### Organic Evening Primrose Oil

Protects the hair and scalp. Helps keep moisture inside the cortex. Protects hair from environmental damage.



### Organic Shea Butter

Anti-inflammatory and antibacterial. Improves shine and overall appearance of hair. Protects hair against hot styling tools and chemical treatments.

## Keratin

Hair is constantly exposed to the aggressive elements of the environment; pollution, exposure to sunlight, chemical treatments and mechanical manipulation are all causes of dull and dry hair, making it more vulnerable to further damage.

The keratin included in Calura's formula is solely derived from a protein contained in wool from New Zealand. This keratin, of the highest quality, protects the hair's own natural keratin as well as provides antioxidants that protect it from environmental elements.

THE RESULT IS HEALTHY,  
SHINY AND STRONG HAIR.



# CALURA TONE GUIDE

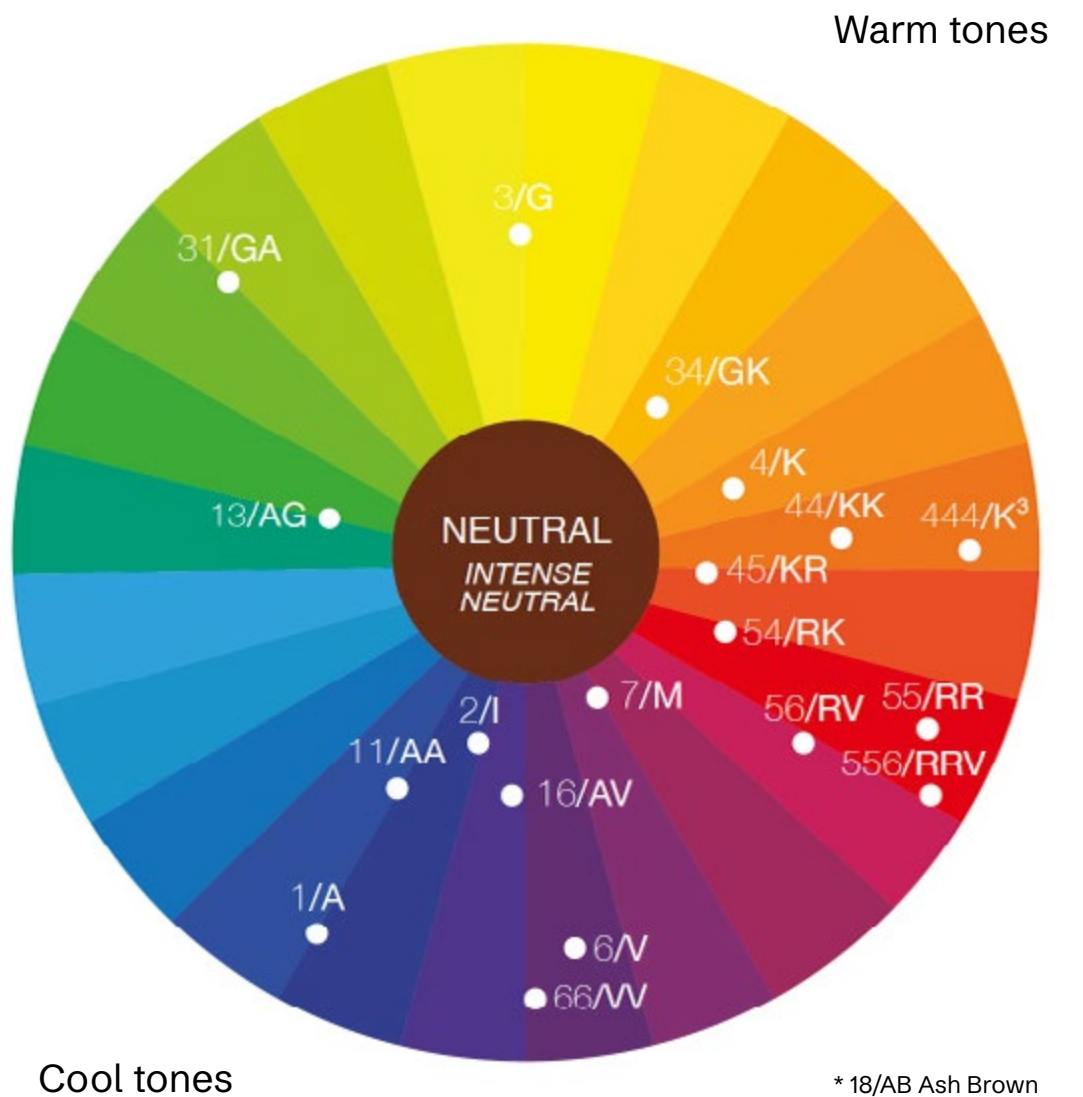
Calura offers a dual coding system to facilitate colour identification. Letters or numbers can be used based on your preference.

- **Levels**
- **Primary Tone**
- **Secondary Tone**

**7** - **36** / **7** - **GV**

| TONES   | BASE                 |
|---------|----------------------|
| NEUTRAL | BLUE / RED / YELLOW  |
| -1 / A  | BLUE                 |
| -2 / I  | BLUE / VIOLET        |
| -3 / G  | YELLOW               |
| -4 / K  | ORANGE               |
| -5 / R  | RED                  |
| -6 / V  | VIOLET               |
| -7 / M  | RED / VIOLET / BROWN |
| -8 / B  | RED / ORANGE / BLUE  |

# CALURA COLOUR WHEEL



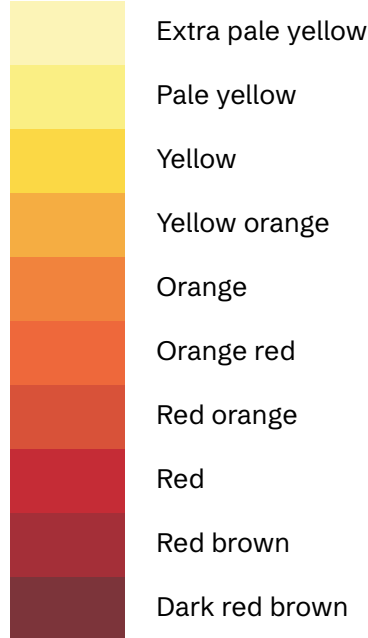
- \* 18/AB Ash Brown
- \* 318/GAB Cool Brown
- \* 32/GI Beige
- \* 36/GV Golden Beige
- \* 8/B Brown

# UNDERLYING PIGMENT CHART

## Natural Levels

- 10. Very pale blonde
- 9. Very light blonde
- 8. Light blonde
- 7. Medium blonde
- 6. Dark blonde
- 5. Light brown
- 4. Medium brown
- 3. Dark brown
- 2. Very dark brown
- 1. Black

## Underlying Pigments



## Underlying Pigmentation

Underlying pigmentation will be exposed once lifting natural hair colour.

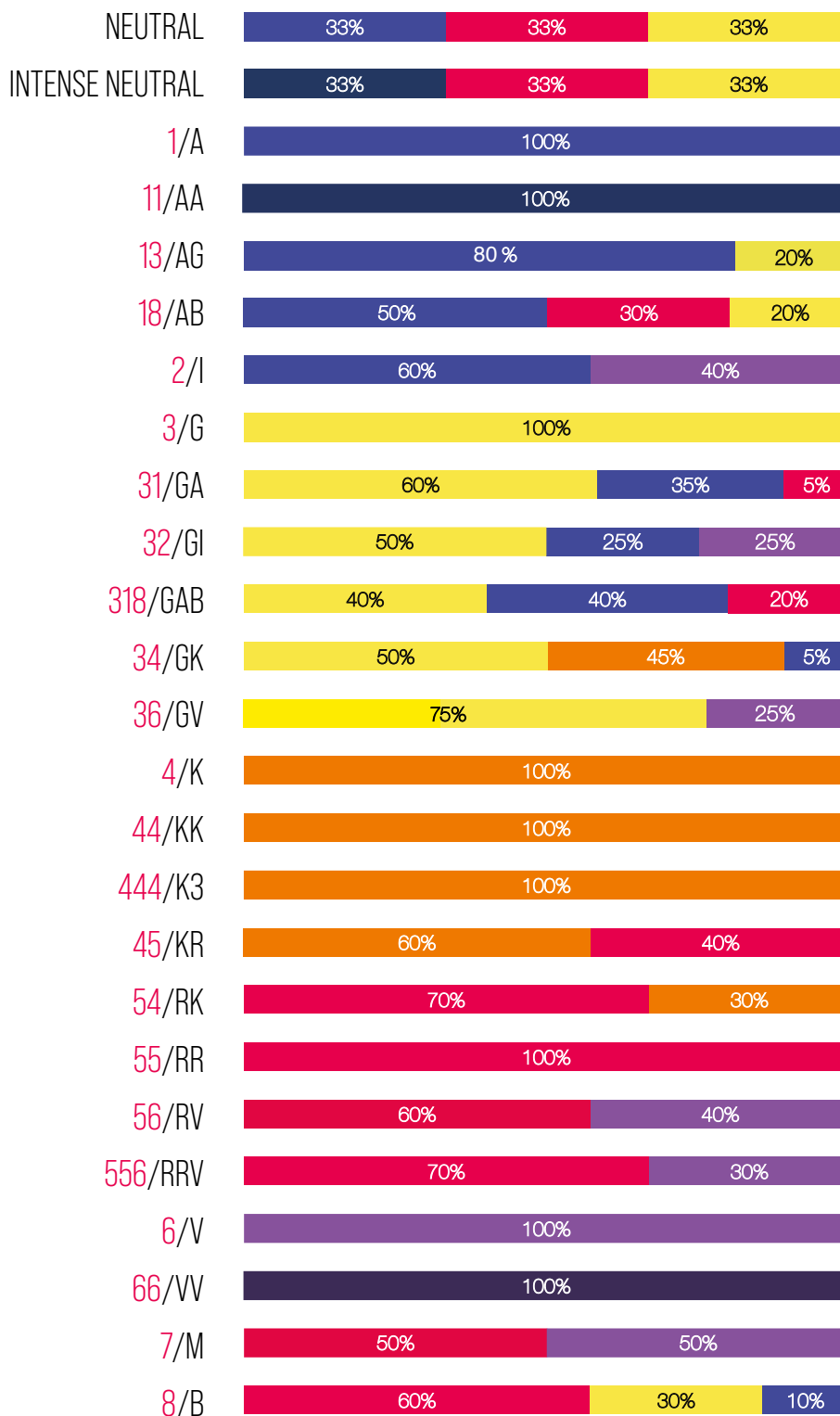
To enhance underlying pigmentation, use warm shades and / or the intensifiers. To control or reduce underlying warmth, cool shades and/or the neutralizers are recommended.

QUESTION

### WHAT DOES UNDERLYING PIGMENT MEAN?

Underlying pigmentation contributes to final hair colour results. When lifting natural hair colour, consider enhancing, neutralizing or balancing underlying pigmentation in order to obtain the desired end results.

# CALURA PERMANENT SHADE SERIES



# DEVELOPERS

## STRENGTH

## USAGE

DEMI EFFECT  
DEVELOPER LOTION  
8.5 VOLUME (2.6%)

- Tone and Pastels
- Full application or colour balancing midlengths/ends
- Corrective pre-colour

10 VOLUME (3%)

- Tone and Pastels
- Full application or colour balancing midlengths/ends

20 VOLUME (6%)

- Tone-on-tone deposit or darker
- Lift 1 to 2 levels
- White hair coverage
- Colour balancing midlengths/ends (max. longevity)

30 VOLUME (9%)

- Lift 3 levels
- Resistant white hair coverage

40 VOLUME (12%)

- Lift 4
- Lift 5 levels (Pure Blonde series)



## OTHER POINTS TO CONSIDER

- Use a 20 volume (6%) developer for maximum longevity.
- For optimal white coverage, use level 8 or darker.
- For resistant white hair, use a 30 vol. (9%) and process for a minimum of 45 minutes.
- Porosity varies from person to person, use table as a guideline only. For 44/KK, 55/RR, 444/K<sup>3</sup>, 556/RRV and 66/VV the processing time is 40 minutes.

# DEVELOPERS - PROCESSING TIME

## Processing Time

Processing time varies depending on hair characteristics. Use the following processing times only as guidelines.

|                            |               |  |
|----------------------------|---------------|--|
| TONING                     | 3-10 minutes  | 10 vol. (3%) / Demi Effect 8.5 vol. (2.6%) |
| TONE ON TONE OR DARKER     | 30 minutes    | 20 vol. (6%)                               |
| COLOUR BALANCING*          | 30 minutes    | 20 vol. (6%)                               |
|                            | 20 minutes    | Demi Effect 8.5 vol. (2.6%)                |
| WHITE HAIR COVERAGE        | 40-45 minutes | 20 vol. (6%)                               |
| WHITE BLENDING (UP TO 75%) | 40-45 minutes | 10 vol. (3%) / Demi Effect 8.5 vol. (2.6%) |
| 1 LEVEL OF LIFT            | 35 minutes    | 20 vol. (6%)                               |
| 2 LEVELS OF LIFT           | 40 minutes    | 20 vol. (6%)                               |
| 3 LEVELS OF LIFT           | 45 minutes    | 30 vol. (9%)                               |
| 4 LEVELS OF LIFT           | 50 minutes    | 40 vol. (12%)                              |
| 5 LEVELS OF LIFT           | 60 minutes    | 40 vol. (12%)                              |

\* For maximum longevity use 20 volume (6%) developer.

## Mixing Ratio

MIXING 1:1

The ratio for all shades levels 1 to 10, clear, creative and corrective series is 1:1.

PURE BLONDE  
MIXING 1:2

The ratio for Pure Blonde shades (12 series) is 1:2 with a recommended processing time of up to 60 minutes.

# APPLICATION

## Use Instruction

- Use a scale for measuring.
- Mixing Ratio 1:1  
60ml Calura Permanent Shine + 60ml Calura Permanent Colour Developers

TO OBTAIN OPTIMAL RESULTS,  
USE CALURA PERMANENT DEVELOPERS

## Application Instruction

- Apply to dry hair, in case of very oily or coated with products, shampoo the hair without over rubbing the scalp. Dry the hair and proceed with application.
- Protect hairline with Oligo Professionel Stain Protector.
- Separate hair into 4 sections.
- Start the application at the crown.
- Trace fine sections and apply the product on the new growth precisely, ensuring sufficient saturation.
- Process following the processing time chart.

## Rinsing Instruction

- Emulsify softly without water to avoid fixing the colour on the hairline. Add luke warm water and continue to emulsify.
- Use Oligo Professionel Colour Remover to completely eliminate colour on hairline, neck and ears, if needed.
- Rinse thoroughly and gently until water runs clear.
- Shampoo with Calura Moisture Balance Cleanser.
- Condition with Calura Moisture Balance Conditioner.
- Apply Calura Colour Lock, leave on for 5 minutes and rinse.

FOR FINE HAIR ONLY USE CALURA COLOR LOCK

## Colour Balancing

To refresh mid-lengths and ends, use a fresh mixture of Calura Permanent Shine (with 20 volume 6% or Demi-effect Lotion 8.5 Volume 2.6%) process up to 20 minutes.

*Remember: To refresh mid-lengths and ends Calura Gloss can be applied with 7 Volume 2% cream or Lotion Calura Gloss developer.*

## Virgin Hair Colour Application

- Apply colour to mid-lengths and ends.
- Leave product to process for 20 minutes.
- Prepare a fresh mixture then, proceed with new growth application and leave product to process following the processing time chart.

## TIPS



- A timely application will ensure best performance.
- When hair is thick and coarse resulting a longer application, mix a fresh batch of colour.
- Apply a gentle pressure while applying to ensure proper saturation.
- Must mix a fresh mixture for the mid-lengths and ends when colour balancing.
- If mid-lengths and end are porous spray Oligo Professionel Porosity Equalizer prior to colour balancing.
- Perform a skin patch test 48 hours prior to each application\*

\* Skin Patch Test: This product contains ingredients that may cause skin irritations or allergies on certain individuals. It is recommended to perform a skin patch test prior to each application. Apply a small amount of product to clean and dry area in the inner side of the elbow and wait 48 hours. If there is any burning, itchiness, swelling or discomfort, do not use this product.



# WHITE HAIR COVERAGE

Calura offers a choice of 6 white hair coverage series. With its unique technology, Calura allows for 100% white hair coverage, even on resistant white hair, in an ammonia-free environment. Each series was formulated to meet a specific need and achieve a unique result. These shades can be used alone, mixed with each other or with a fashion shade.

|  |   |   |  |   |   |
|--|---|---|--|---|---|
| NEUTRAL  | INTENSE NEUTRAL   | COOL BROWN<br>318 / GAB   | ASH BROWN<br>18 / AB   | BROWN<br>8 / B  | GOLDEN COPPER<br>34 / GK  |
|  |  |  |  |  |  |
| Neutral result   | Intense Neutral result  | Cool natural result   | Cool result  | Warm result   | Warmest result  |
|  |  |  |  |  |  |

## Shade value/Luminosity



## Recommended mixing ratios

25% White Hair Coverage Shade + 75% Fashion Shade 

50% White Hair Coverage Shade + 50% Fashion Shade 

# INTENSE SHADES

Calura offers 5 intense series: -44/KK, -444/K<sup>3</sup>, -55/RR, -556/RRV and -66/VV. These series were formulated to offer maximum vibrancy, superior shine and longer lasting results. Processing time for these shades are 40 minutes without white hair and 45 minutes with white hair. For white hair coverage, it is recommended to intermix Calura intense shades with one of the white hair coverage series below.

- 318/GAB to control warm results
- 34/GK to enhance warm results
- 8/B to maintain warm results and depth

## ACHIEVING 100 % COVERAGE WITH WHITE HAIR

- Fashion shades are not designed to cover white hair and must be mixed with a shade of similar level from any of the white hair coverage series
- Determine appropriate white hair coverage shade to either enhance, neutralize or control underlying pigmentation
- For optimal white coverage do not use a shade with a level lighter than 8 and process for a minimum of 40-45 minutes
- For resistant or coarse hair, use a 30 vol. (9%) developer and process 45 minutes

# 8 ULTRA

Formulated to offer 100% white hair coverage on 30% to 100% white hair and provide lighter, softer and more luminous blondes.

- 100% white hair coverage for softer, lighter blondes
- Intermixable with all Calura Permanent Shine shades (except Pure Blonde shades)
- Anti-breakage and hair strengthening properties
- Superior lifting of natural hair

## Application recommendations

Mixing Ratio: 1:1

Not recommended for pre-lightened hair

When intermixed with fashion shades, use developer recommended for 8U series

Do not intermix with Pure Blonde High Lift shades

8U NEUTRAL

8U-12 / 8U-AI

8U-36 / 8U-GV

8U-3 / 8U-G



33% 33% 33%

80% 40%

70% 30%

100%

To achieve **level 8** softer lighter blonde

## NATURAL LEVELS DEVELOPER DURATION

|                 |               |               |
|-----------------|---------------|---------------|
| 100% white hair | 30 Vol. (9%)  |               |
| 6 / 7*          | 30 Vol. (9%)  | 40-45 minutes |
| 4 / 5*          | 40 Vol. (12%) |               |

To achieve **level 9** softer lighter blondes  
(for best results, apply on levels 6 and lighter)

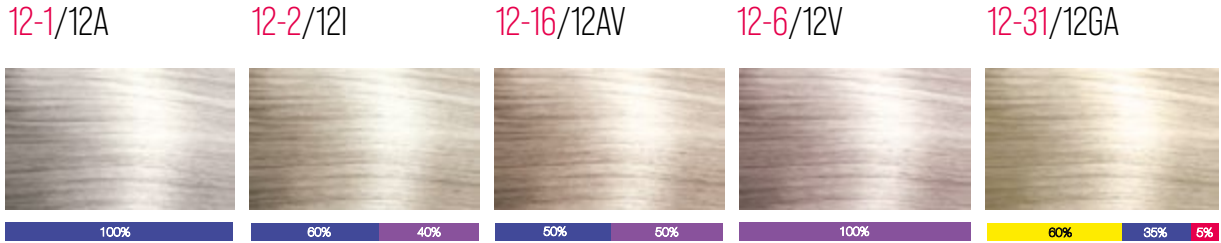
## NATURAL LEVELS DEVELOPER DURATION INTERMIX

|                 |               |               |                              |
|-----------------|---------------|---------------|------------------------------|
| 100% white hair | 30 Vol. (9%)  |               | 75% 8 Ultra                  |
| 7*              | 30 Vol. (9%)  | 40-45 minutes | +<br>25% Blonding Cream (BC) |
| 6*              | 40 Vol. (12%) |               |                              |

\* 8U series was formulated for salon guests with a minimum of 30% white hair.

# PURE BLONDE SHADES

Calura Pure Blonde shades are formulated for maximum lifting and toning on natural hair.



## Mixing Ratio 1:2 (1 part Pure Blonde shade to 2 Parts Developer)

- Recommended 30 vol. (9%) developer or 40 vol. (12%) developer.
- Recommended on natural levels 6 and lighter.
- Processing time is up to 60 minutes.

\* After all colour services, follow with Calura Moisture Balance Cleanser and Colour Lock for maximum longevity.

## New Growth Application

Apply to new growth only. Avoid overlapping. Process for up to 60 minutes. To maintain optimal results, retouch new growth every 3-4 weeks.

## Virgin Application

Apply Calura Pure Blonde shade to midlengths and ends first. Cover the hair with a plastic cap and process for 15 to 20 minutes until lifting is observed. Prepare a fresh mix and apply to new growth area. Process for up to 60 minutes.\* Timing may vary due to length. ex: short hair 15 to 20 minutes, shoulder length or longer 20 to 30 minutes.

## TIPS

- Calura Pure Blonde shades are not recommended for pre-lightened hair.
- Apply Pure Blonde shades on natural levels 6 or lighter.
- Apply generously for optimal lifting.
- To avoid cool tones on fine textured hairline new growth, apply colour during last 30 minutes of processing time. Alternatively, mix 12-31/12GA with your desired shade for the complete processing time.

## Recommended Application Level and Tonal Results

Porosity varies from person to person, use table as a guideline only.

| SHADE      | LEVEL 6 NATURAL | LEVEL 7 NATURAL | LEVEL 8 NATURAL |
|------------|-----------------|-----------------|-----------------|
| 12-1/12A   | Cool beige      | Ash             | -               |
| 12-2/12I   | Warm beige      | Cool beige      | Ash             |
| 12-16/12AV | Warm beige      | Cool beige      | Ash             |
| 12-6/12V   | -               | Warm beige      | Cool beige      |

# MIX SERIES

Offers vibrant intensifiers formulated to enhance warmth on fashion shades and cool neutralizers, specially formulated for extra underlying pigmentation control or for corrective procedures.

- 2 neutralizers and 4 intensifiers
- Must be included in formula
- Use up to 25% of formula

0-33 / OGG



0-44 / OKK



0-55 / ORR



0-66 / OVV



0-16 / OAV



0-11 / OAA



## Intensifiers

This series was designed to offer stylists unlimited creative possibilities. Formulated with oxidative dyes only (except for 0-33 that also contains a direct dye) the Calura Intensifiers offer ultimate vibrancy and effective tonal control. Use up to 25% of the formula.

- **0-33** / OGG gold base: adds gold tonality and warmth to any fashion shade
- **0-44** / OKK copper base: adds copper tonality to fashion shades level 5 or lighter
- **0-55** / ORR red base: adds red vibrancy to any copper, red or violet fashion shades
- **0-66** / OVV violet base: adds violet vibrancy to any red or violet fashion shades

## Neutralizers

The Calura neutralizers are an excellent tool for effective extra tonal control. The table below should be used as a guideline only. Please note that all hair is different and results may vary depending on hair quality, resistance of underlying pigment and processing time.

- **0-11** / OAA: blue or ash base
- **0-16** / OAV: blue-violet or ash-violet base

| LEVELS | NEUTRALIZERS | % / AMOUNT  |
|--------|--------------|-------------|
| 2/3    | 0-11 / OAA   | 25% / 15 mL |
| 4/5    | 0-11 / OAA   | 20% / 12 mL |
| 6      | 0-11 / OAA   | 15% / 9 mL  |
| 7      | 0-16 / OAV   | 25% / 15 mL |
| 8      | 0-16 / OAV   | 20% / 12 mL |
| 9/10   | 0-16 / OAV   | 15% / 9 mL  |

Proportions are based on a formula containing 60 mL / 2 oz. of colour.

# CLEAR

Calura Clear is a dye free formula that offers shine and hydration.



## When and How to Use:

- For instant shine and hydration on dull and dry hair:
  - Mix Calura clear with Demi Effect Developer Lotion 8.5 vol. (2.6%) or with Calura 10 vol. (3%) developer.
  - Apply on damp hair.
  - Process for up to 10 to 15 minutes. For fine hair types, 3-5 minutes.
  - To dilute Creative and Corrective series shades, mix with any proportion of Calura Clear.
  - As part of a toning formula, add Calura Clear in any proportion to control dye deposit.
  - When colour balancing midlengths and ends, add up to 25% of Calura Clear to base colour.

**TIP :** ON FINE HAIR PROCESS UP TO 5 MINUTES.

# BLONDING CREAM (BC)

Intermix with all shades levels 6 to 12 to boost lifting and produce the brightest and purest blondes.



## Application recommendations

- Do not use alone
- Not recommended for pre-lightened hair
- Can be used with all developers

Our blinding cream is presented in distinctive white packaging, allowing easy differentiation from your other Calura Permanent Colour.

| INTERMIX WITH            | % OF BC   | DEVELOPER  |
|--------------------------|-----------|--|
| Pure Blondes (12) Series | 25%       | Follow developer mixing ratio and application instructions |
| Shades level 6-10        | Up to 25% |  |



# PASTEL

Calura offers 4 pastel shades.

P-1 ASH  
COOL SILVER TONE



P-12 PEARL  
COOL TONE



P-32 BEIGE  
SANDY TONE



P-82 CHAMPAGNE  
SLIGHTLY WARM TONE



## Application

- Mixing ratio 1:1
- Apply on damp towel dried hair
- Apply on levels 9, 10 and pre-lightened hair
- Use Demi Effect Developer Lotion 8.5 vol. (2.6%) or Calura 10 vol. (3%) developer
- Processing time may vary from 3 to 10 minutes

Our pastel color line is thoughtfully packaged in both pink boxes and tubes, making them effortlessly stand out in your back bar.

## Toning with Calura Permanent

### Toning Pre-lightened Hair

Toning pre-lightened hair is a step that is performed after lightening hair to either neutralize undesired warmth, deposit a hue or both.

**Always tone with a Demi Effect Developer Lotion 8.5 vol. (2.6%) or a 10 vol. (3%) Developer. Recommended processing time is 3-10 minutes.**

- Always pre-lighten to desired target level.
- Apply toner on damp hair. Doing so allows for better control.
- Pre-lightened hair is very porous. Strand test and visually process as toner may work quickly.
- To reduce speed of toner add clear to formula.
- Do not shampoo hair after toner. Rinse toner and apply Calura Colour Lock, process for 3-5 minutes and rinse.

# CORRECTIVE PRE-COLOURING

## When to Pre colour Hair:

- When colouring hair darker by 2 or more levels
- When extreme colour loss has occurred (colour faded by 2 levels or more)

| DESIRED LEVEL | PRE-COLOURING FORMULAS      | DEVELOPER  |
|---------------|-----------------------------|--|
| 9             | 9-3 / 9G                    | Demi Effect<br>Developer Lotion<br>8.5 vol. (2.6%) |
| 8             | 1/4 9-34 / 9GK + 3/4 9-3/9G |  |
| 7             | 1/4 8-34 / 8GK + 3/4 8-3/8G |  |
| 6             | 1/4 7-45 / 7GK + 3/4 7-3/7G |  |
| 5             | 1/4 6-45 / 6GK + 3/4 6-3/6G |  |
| 4             | 5-7 / 5M                    |  |
| 3             | 4-7 / 4M                    |  |

**TIPS :** ALWAYS PRE-COLOUR THE HAIR ONE LEVEL LIGHTER THAN THE TARGET SHADE + IT IS RECOMMENDED TO PRE-COLOUR PRE-LIGHTENED HAIR.

## Processing Pre-colour Formulas

- Apply appropriate pre-colouring formula
- Processing time is 15 minutes
- Shampoo with Calura Moisture Balance Cleanser, dry hair
- Proceed with final colour formula using 20 vol. (6%). Processing time for final colour is 30 minutes
- Shampoo with Calura Moisture Balance Cleanser, condition with Calura Moisture Balance Conditioner
- Apply Calura Colour Lock for 3-5 minutes

*Strand test prior to application of final colour for accuracy of desired target (faded by 2 levels or more).*

# CORRECTIVE PRE-COLOURING

Pre-colouring formulas for intense shades

| TARGET SHADE                      | PRE-COLOURING SHADE          | DEVELOPER  | PROCESSING TIME |
|-----------------------------------|------------------------------|--|-----------------|
| 7-44/7KK OR 7-444/7K <sup>3</sup> | 3/4 7-45/7KR + 1/4 Clear     | Demi Effect<br>Developer Lotion<br>8.5 vol. (2.6%) | 15 minutes      |
| 6-44/6KK or 6-444/6K <sup>3</sup> | 7-45/7KR                     |  |                 |
| 5-44/5KK or 5-444/5K <sup>3</sup> | 6-45/6KR                     |  |                 |
| 7-55/7RR                          | 3/4 7-54/7RK + 1/4 Clear     |  |                 |
| 6-55/6RR                          | 7-54/7RK                     |  |                 |
| 5-55/5RR                          | 6-54/6RK                     |  |                 |
| 6-556/6RRV                        | 3/4 6-56/7RV + 1/4 Clear     |  |                 |
| 5-556/5RRV                        | 6-56/6RV                     |  |                 |
| 4-556/4RRV                        | 5-56/5RV                     |  |                 |
| 5-66/5VV                          | 6-6/6V                       |  |                 |
| 4-66/4VV                          | 5-6/5V                       |  |                 |
| 3-66/3VV                          | 4-6/4V                       |  |                 |
| 1-66/1VV                          | 3/4 2 Neutral + 1/4 0-66/0VV |  |                 |



# RIISING FOR SUCCESS



## Calura Moisture Balance Cleanser

Let the colour shine longer. Lather in this rich, perfectly balanced moisture cleanser to extend the hair's colour and revitalize shine.

### USE

Apply. Lather. Indulge. Rinse. Follow with Oligo Moisture Balance Conditioner.



## Colour Lock

With its pH of 4.0, the Colour Lock is the first step towards long lasting colour! Use this professional formula after any colour service to smooth and tightens the cuticle, effectively locking in colour.

### USE

Apply after any chemical service. Distribute thoroughly. Indulge for 3 to 5 minutes. Rinse.



## Calura Moisture Balance Conditioner

Give the hair a healthy balance. Use after our Moisture Balance Cleanser to detangle, balance and moisturize the hair — while extending the colour and natural shine!

### USE

Apply to wet hair. Indulge and rinse.

**VEGAN, PARABEN FREE, GLUTEN FREE, SULFATE FREE, MCI/MI FREE, NO ARTIFICIAL COLOURS, COLOUR SAFE.**

# OLIGO SUPPORT TOOLS

Our Oligo Support Tools are a suite of essential products to ensure outstanding results for both clients and professionals. These tools are meticulously crafted to cater to various aspects of the hair and scalp care needs.



1 L / 32 OZ

## Clarifying Shampoo

The Oligo Professionnel Clarifying Shampoo is formulated to remove accumulated build-up on the hair caused by everyday styling, promoting a cleaner and healthier scalp, while making hair shinier and more manageable.

### DIRECTIONS

For weekly cleansing, apply Clarifying Shampoo to wet hair, massage and rinse. For deep cleansing, apply Clarifying Shampoo to wet hair, let sit for 3-5 minutes and rinse.



240 ML / 8 OZ

## Porosity Equalizer

Equalizes hair porosity. Apply a small quantity before toning or before wrapping permanent wave rods to prevent dryness.

### DIRECTIONS

Spray a small quantity onto towel blotted hair. Do not rinse.



240 ML / 8 OZ

## Stain Protector

The Stain Protector forms a long-lasting skin protection against colour stains. This gel is heat resistant, fragrance free and gentle on the skin. Make sure you use it with Calura and FunkHue shades.

### DIRECTIONS

Apply a thin layer to the hairline before applying hair colour. When colour service is over, wipe off with a damp cloth or rinse with water.



240 ML / 8 OZ

## Stain Remover

Fast and efficient, the stain remover gently eliminates colour stains from the skin and the scalp without irritations. Ideal to remove FunkHue stains!

### DIRECTIONS

When colour service is complete, moistened a cotton wool with colour stain remover and apply to stained skin or scalp. Rinse with lukewarm water. Do not leave lotion on skin for a prolonged period of time. Always perform a sensitivity test prior to application.



200 ML / 6.8 OZ

## Scalp Protector

The Scalp Protector oil reduces irritation and itchiness on clients with sensitive scalps during colour or lightening services.

### DIRECTIONS

For colour services mix 1-2 teaspoons (5-10 ml) directly in colour bowl with 60 ml / 2 oz of colour and mix well. If the colour portion, excluding developer, is 30 ml / 1 oz do not exceed 1 teaspoon (5 ml) of oil. For lightening services, mix with lightening powder or cream and developer until ideal consistency is reached.



# CALURA *TEN*

## 10 MINUTE PERMANENT HAIR COLOUR

Not just a hair colour; a transformative experience, combining efficiency, care, and outstanding results all in one package.

# CALURATEN

Our fast-processing, permanent hair colour is meticulously formulated to colour and simultaneously provide nourishment to the hair, all while ensuring optimal scalp protection.

## Product Features

- FREE of PPD, Paraben, Cruelty and Gluten
- No Animal-Derived Ingredients
- Rapid Processing Time
- Long-Lasting Colour
- Scalp Care and Comfort
- Very Low Ammonia Odor
- Dermatologist-Tested

## Ingredients



### Hydrolyzed Pea Protein

Repairs, restores moisture content and strengthens hair structure.



### Acacia Senegal

From the dry regions of Africa, specifically the Sahara, Acacia Senegal Gum mimics the benefits of animal-derived collagen. This natural ingredient supports skin hydration, fortifies the skin's moisture barrier, and aids in retaining moisture and nutrients during processing.



### Alpha Bisabolol

Derived from Brazilian Candeia trees and found in German chamomile, boasts anti-inflammatory, calming, antibacterial, and anti-fungal properties. It fosters a healthy scalp for lustrous hair.

## BENEFITS

- 100% White Hair Coverage: CaluraTEN provides 100% coverage of white hair.
- Offers up to 3 levels of lift: for all hair types and textures.
- Phytonutrients: Our formula includes nourishing ingredients like Hydrolyzed Pea Protein, Acacia Senegal, and Alpha Bisabolol.
- Fast Processing Time: CaluraTEN works three times faster than standard permanent hair color, thanks to our carefully chosen dye intermediate combination.
- Shades Tonality: Complement your Calura Permanent Shine Hair Color and Calura Gloss with CaluraTEN shades.
- Innovative System - Scalp Care: Our innovative system not only enhances the hair appearance but also cares for the scalp during the rapid coloring process.



# CALURATEN

## Features and Benefits

- Nourishes & Protects hair and scalp
- 3x Faster than standard permanent hair colour
- 4 series that offer 100% white hair coverage
- All Shades Intermixable
- Offers up to 3 levels of lift
- Longevity & Shine

## Mixing ratio 1:1

| PROCESSING TIME        |            |               |
|------------------------|------------|---------------|
| Tone on tone or darker | 10 minutes | 20 vol. (6%)  |
| White hair coverage    | 10 minutes | 20 vol. (6%)  |
| 1 level of lift        | 15 minutes | 20 vol. (6%)  |
| 2 levels of lift       | 15 minutes | 30 vol. (9%)  |
| 3 level of lift        | 15 minutes | 40 vol. (12%) |

**Tip:** Timely application is imperative. Do not exceed processing time.

For global colour application service, use Calura Gloss or Calura Permanent Shine hair colour for mid-lengths and ends.

After all colour services, follow with Calura Moisture Balance Cleanser and Colour Lock for maximum longevity.

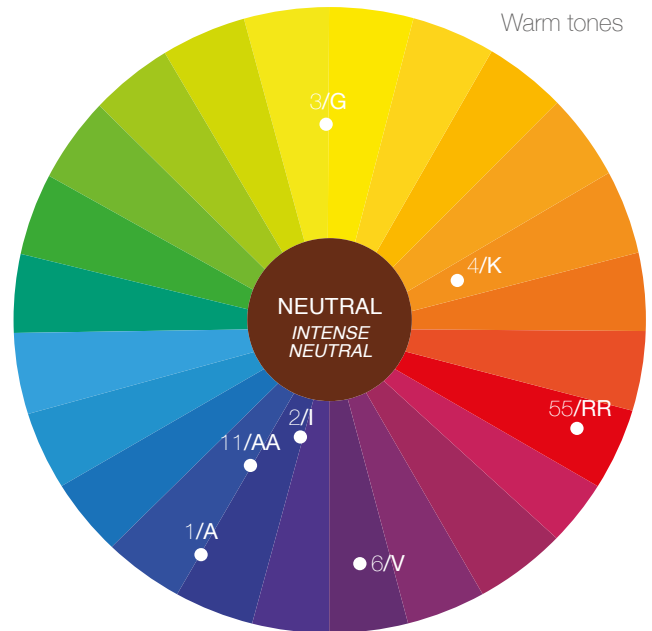
## White hair coverage

- For optimal white hair coverage, use a level 8 or darker.
- For resistant white hair, use a 20 vol. (6%) developer, 15 minutes is the minimum processing time.
- Fashion shades are not designed to cover white hair. For coverage:  
25% White = 25% Covering shades + 75% Fashion Shades  
+50% White = 50% Covering shades + 50% Fashion Shades

| SERIES          | TONE DIRECTION  |
|-----------------|-----------------|
| Neutral         | Neutral         |
| Intense Neutral | Intense Neutral |
| 318/GAB         | Cool natural    |
| 8/B             | Warm            |

● 100% white coverage series

## Colour wheel



Cool tones

\*318/GAB Cool Brown  
\*8/B Brown

## Natural levels

|                      |
|----------------------|
| 10- Very pale blonde |
| 9- Very light blonde |
| 8- Light blonde      |
| 7- Medium blonde     |
| 6- Dark blonde       |
| 5- Light brown       |
| 4- Medium brown      |
| 3- Dark brown        |
| 2- Very dark brown   |
| 1- Black             |

## Underlying pigments

|                   |
|-------------------|
| Extra pale yellow |
| Pale yellow       |
| Yellow            |
| Yellow-orange     |
| Orange            |
| Orange-red        |
| Red-orange        |
| Red               |
| Red-brown         |
| Dark red-brown    |

# APPLICATION

## Newgrowth Application

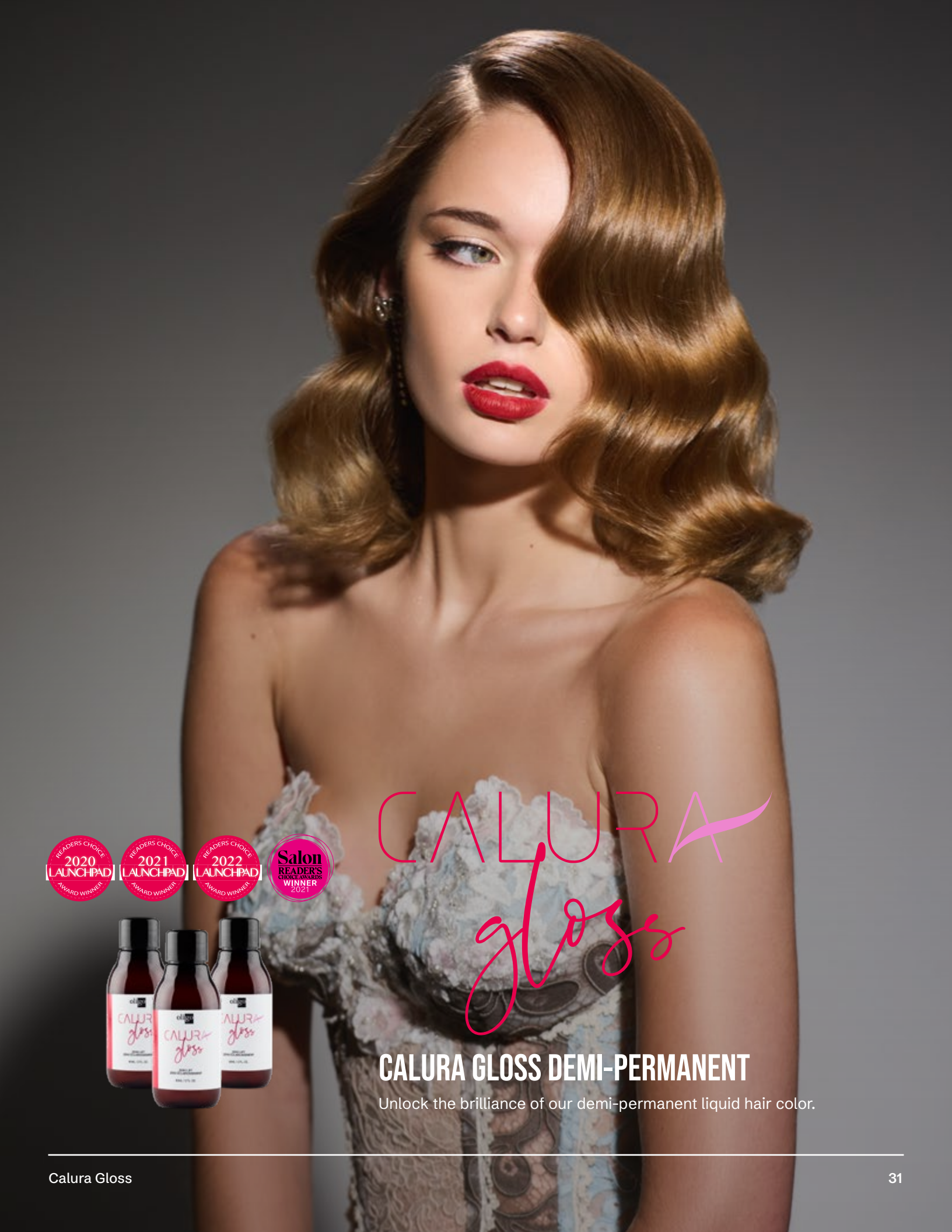
1. Protect hairline with Oligo Professionel Stain Protector.
2. Apply the hair colour to the newgrowth in fine sections, ensuring generous saturation of the colour. Gently press the colour brush against the hair during application.
3. Process for either 10 minutes for deposit-only or 15 minutes for lifting. (up to 15 minutes for resistant white hair)
4. At the rinsing station, add lukewarm water to the hairline and emulsify the colour.
5. Use Oligo Professionel Stain Remover to completely eliminate colour on hairline, neck and ears, if needed.
6. Rinse thoroughly until the water runs clear.
7. Gently apply Calura Moisture Balance Cleanser.
8. Rinse thoroughly until the water runs clear.
9. Apply Calura Moisture Balance Conditioner to the hair, massaging it gently into the scalp to restore the scalp's pH balance and prevent post-service itchiness.
10. Rinse well and follow up with Calura Colour Lock.

## Newgrowth Application and Balancing Colour on Mid-Lengths and Ends

1. Protect hairline with Oligo Professionel Stain Protector.
2. Apply the hair colour to the newgrowth in fine sections, ensuring generous saturation of the colour. Gently press the colour brush against the hair during application.
3. Process for either 10 minutes for deposit-only or 15 minutes for lifting. (up to 15 minutes for resistant white hair)
4. At the rinsing station, add lukewarm water to the hairline and emulsify the color.
5. Use Oligo Professionel Stain Remover to completely eliminate colour on hairline, neck and ears, if needed.
6. Rinse thoroughly until the water runs clear.
7. Prepare an equivalent formula of Calura Gloss and apply to mid-lengths and ends.
8. Process for 15-20 minutes.
9. After processing time is completed, rinse the hair thoroughly with lukewarm water until water runs clear.
10. Gently apply Calura Moisture Balance Cleanser. (light cleansing)
11. Rinse thoroughly until the water runs clear.
12. Apply Calura Moisture Balance Conditioner to the hair, massaging it gently into the scalp to restore the scalp's pH balance and prevent post-service itchiness.
13. Rinse well and follow up with Calura Colour Lock.

**\*\*Important Additional information\*\***

- The processing time starts after application is completed.
- Keep in mind that this application is time-sensitive, so work swiftly and accurately.
- Do not exceed processing time, otherwise hair colour results will be darker.



# CALURA *gloss*



## CALURA GLOSS DEMI-PERMANENT

Unlock the brilliance of our demi-permanent liquid hair color.

# CALURA GLOSS

Our breakthrough demi-permanent liquid colour is no exception. Calura Gloss offers the versatility of a liquid colour in an alcohol-free water base environment! Calura Gloss delivers an unbelievably glossy finish without any lifting power.

## The best of both worlds

Calura Gloss' technology offers all the advantages of acidic and alkaline hair colours without any of their drawbacks! Calura Gloss features a gentle acid-balanced base buffered to an alkaline pH that works synergistically with acidic molecules, offering the best of both worlds. The result is unprecedented shine, conditioning and longer lasting deposit with zero lift, guaranteed!



Our unique technology allows deep penetration of dyes, but also of our high-performance conditioning agents. Offering long term conditioning and shine.



### Hydrolyzed Vegetable Protein

A protein-based complex which improves hair elasticity, conditioning, strength and adds natural shine. This unique ingredient penetrates into the hair cortex, building strength from within and protecting hair surface. It also contains amino acids which replenish pre-lightened hair!



### Acai Fruit Extract

Anti-aging super-fruit. Excellent source of antioxidants that maintains hair youthfulness and protection.



### Alcohol Free

Have you ever considered putting Alcohol on your hair? So why use a demi permanent colour that contains alcohol! It causes dryness and frizz not to mention makes combing product through to ensure even colour deposit very difficult. For that reason, we have completely eliminated it from our formulas offering a safer and healthier product.



### PPD Free

Strong allergen that can cause mild to severe allergic reactions.



# CALURA GLOSS

## Versatility

- Colour balance
- Tone pre-lightened hair
- Enhance colour of natural hair
- White hair blending
- Colour correction
- Enhance shine

Zero Lift

## Clear 0-00



Dye free formula that offers shine and hydration; can be used alone or intermixed with any Calura Gloss shade.

## Mixing ratio 1:1

| PROCESSING TIME                 |               |
|---------------------------------|---------------|
| Toning                          | 3-10 minutes  |
| Colour balancing                | 20 minutes*   |
| White hair blending (up to 30%) | 30-35 minutes |

Processing times are to be used as guidelines only. For more vibrant results or for better white blending, process 15-20 minutes with plastic cap under pre-heated warm dryer. \* Process up to 20 minutes. To achieve lighter colour deposit, either dilute shade with Clear or use a lighter shade.

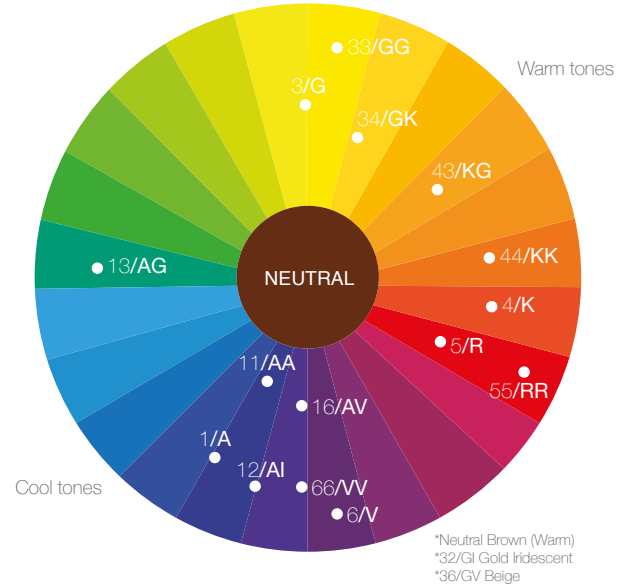
## Developer Options

-  Calura Lotion Developer 7 volume (2%) offers a lotion-like consistency ideal for bottle application.
-  Calura Cream Developer 7 volume (2%) offers a cream-like consistency for more control when applying with a bowl and brush.

## White Hair Blending

| SHADE           | DEVELOPER    | RATIO | % WHITE HAIR BLENDING |
|-----------------|--------------|-------|-----------------------|
| Neutral         | 7 vol. (2%)  | 1:1   | UP TO 30%             |
| Neutral Brown   | 7 vol. (2%)  | 1:1   | UP TO 30%             |
| Intense Neutral | 13 vol. (4%) | 1:1   | UP TO 50%             |

## Colour wheel



## Series and Bases

|                 |      |     |     |
|-----------------|------|-----|-----|
| Neutral         | 33%  | 33% | 33% |
| Intense Neutral | 33%  | 33% | 33% |
| Neutral Brown   | 50%  | 25% | 25% |
| 1 / A           | 100% |     |     |
| 11 / AA         | 100% |     |     |
| 12 / AI         | 75%  | 25% |     |
| 3 / G           | 100% |     |     |
| 32 / GI         | 50%  | 25% | 25% |
| 34 / GK         | 75%  | 25% |     |
| 36 / GV         | 75%  | 25% |     |
| 4 / K           | 100% |     |     |
| 43 / KG         | 75%  | 25% |     |
| 5 / R           | 100% |     |     |
| 6 / V           | 100% |     |     |
| 66 / VV         | 100% |     |     |

# APPLICATION

## Use Instruction

- Use a scale for measuring.
- Mixing Ratio 1:1  
60 ml Calura Gloss + 60 ml Calura Gloss Developer

## Application Instruction

Calura Gloss offers *Versatility* for many popular services:

- Colour balancing – when mid lengths and ends have faded, deposit or refresh previous colour. Apply on Dry or Damp hair and process for up to 20 minutes.
- Tone Pre-lightened hair – a gentle option for porous hair types ensuring beautiful colour, shine and optimum conditioning benefits. Apply on Damp shampooed hair. Start application in the zone where the hair requires the most tonality depositing. Process visually 3 to 10 minutes.
- Enhance colour of natural hair – for those who are new to colour or want to freshen their natural tones. Apply on dry hair with Calura Gloss Developer cream 7 Volume 2%. Process 20 minutes.
- White hair blending – up to 50 % white hair blending. Increased performance with our Intense Neutrals + 13 volume (4%) Calura Gloss developer. Process 30-35 minutes.
- Enhance shine – experience the shine of when using all shades or by using our Clear on its own as a shine treatment. Mix with 7 volume 2% Calura Gloss Developer. Process 10 minutes for normal hair and 15 minutes for coarse and resistant.
- If hair is porous spray Oligo Professionnel Porosity Equalizer prior to apply Calura Gloss for more even colour results.
- For more vibrant results or for better white blending, process 15-20 minutes with plastic cap under pre-heated warm dryer. A dryer is normally used to accelerate the process. Best practice recommendations when using a dryer are with the Calura Gloss lotion or cream: 3-10 minutes with plastic cap under pre-heated warm dryer, then 10 minutes to cool.
- Porous hair, may require a reduced processing time and/ or dilution of shade with the Clear.
- Caution must be taken when dealing with pre-lightened hair.

## Rinsing Instruction

- Add luke warm water and emulsify.
- Use Oligo Professionnel Colour Remover to completely eliminate colour on hairline, neck and ears, if needed.
- Rinse thoroughly and gently until water runs clear.
- Shampoo with Calura Moisture Balance Cleanser.
- Condition with Calura Moisture Balance Conditioner.
- Apply Calura Colour Lock, leave on for 5 minutes and rinse.

## TIPS

- To achieve lighter colour deposit, either dilute shade with Clear or use a lighter shade. *(This refers specially to pre-lightened hair. The Clear can be diluted in any proportion as a caution or to create various effects. If wanting to obtain 1 level lighter, add 25% of Clear)*
- Dilutions to achieve more than 2 levels lighter are not usually good as the hue may shift.

## ADDITIONAL

Conditioning only, without shampooing first, is an option. The hair **MUST** be rinsed very well after the processing time.

# FREQUENTLY ASKED QUESTIONS - CALURA PERMANENT

## Can I use heat or a blow dryer to process calura stain faster?

No, with our exothermic technology we do not recommend the use of heat.

## Can I use blacklight smart developer with calura permanent hair colour?

For best results, we recommend using Calura Developer with Calura coloring.

## Will I get “hot roots” with the 30 volume for white hair coverage?

We recommend using a (9%) 30 volume developer for white coverage with thick or resistant hair types only. If you have formulated correctly to the characteristics of the hair with the correct dwell time and shade, you will not experience ‘hot roots’. The characteristics of the hair refer to the texture, density, elasticity, and porosity of hair.

## Can I add my accelerator drops to treat faster?

We do not recommend adding accelerators to our coloring.

## Is calura permanent colour vegan?

No, because we use keratin from sheep’s wool.

## Why can’t I get white hair coverage with 10 volume oxidant?

Our 10 Volume generates the lowest amount of heat, which is not a sufficient amount of heat to allow the cuticle to open sufficiently.

## When should I use a (3%) 10 volume developer?

- For toning services and with the use of our Pastel Series
- For shine and hydration when mixed with Clear
- Use on damp hair for a semi-permanent option

## Which developer is recommended for colour balancing?

For best longevity, we recommend using a (6%) 20 volume developer to balance colour or refresh lengths and ends.

CALURA 

# FREQUENTLY ASKED QUESTIONS - CALURA GLOSS

## Can I use any developer with gloss?

We recommend using our Calura Gloss developer with Calura Gloss shades.

## Should I use color lock?

Calura Care & Styling Colour Lock will aid in better colour longevity as it begins the process of lowering pH and reducing swelling of the cuticle scales.

## Can I use other demi developer with gloss?

You can use Calura Permanent Demi Effect Lotion with Calura Gloss, but you will get lightening.

## Can Calura Gloss be used for pre-colouring?

Yes, the same shade recommendations and instructions given for Calura can be used for Calura Gloss.

## Is Calura Gloss gluten free?

Yes

## What happens if the liquid shade is mixed with water?

All the ingredients will be diluted and therefore the shade, the longevity and all the benefits will be diluted with the viscosity. Dilution must be done with Clear.

CALURA  
gloss

# FREQUENTLY ASKED QUESTIONS - CALURATEN

## What happens if it takes more than 10 minutes to apply the colour?

When application speed is a concern, consider using a lighter shade of CaluraTEN to achieve desired results more efficiently. On coarse, resistant hair, you can go up to 15 minutes. On fine normal hair 10 minutes otherwise, the results are darker.

## What if I leave less than 10 minutes?

Deviation of tone will occur, no sufficient white coverage.

## Can you mix CaluraTEN with Calura Permanent?

CaluraTEN cannot be mixed with CP ((or any other product)) to prevent any unwanted chemical reactions or inconsistencies in results.

## Can I use heat or a blow dryer to process caluraTEN faster?

CaluraTEN does not require heat application as it is already designed for fast and effective colour development.

## Which developer do you recommend for white hair coverage?

A Calura 20 Volume Developer is recommended for effective white hair coverage with processing time of 10 minutes for regular or 15 minutes for resistant.

## Why no 10 volume developer?

It will result in shorter shade longevity due to low chemical activity.

## What makes CaluraTEN 3 times faster?

Selection of certain dyes intermediates that can develop on a shorter processing time under certain condition. The concentration of the alkaline agent also contributes for faster chemical activity and the concentration of the oxidizing agent.

## Is there any ammonia in caluraTEN?

Yes, but the odor is minimal.

## Why does CaluraTEN have ammonia?

Ammonia is a small molecule and can quickly penetrate the hair structure.

## Can I use CaluraTEN for pre-colour?

No

## Can I use for toning?

Yes

## Is the colour progressive?

Yes

## Can I apply with a bottle?

Yes

## Can I use for a root tap, base smudge or shadow base?

Yes

## Can you break the base with CaluraTEN?

Yes

## Can scalp protector be added?

Yes and you can also add our Blacklight Smart Bond Protection and Strengthening Concentrate.

CALURATEN

## STAY INFORMED CONNECT WITH US

VISIT OUR **WEBSITE**  
for valuable insights  
and updates.



FOLLOW US ON **INSTAGRAM**  
to access exclusive  
content and stay up to date  
with industry trends.



JOIN OUR **FACEBOOK** GROUP  
to engage with our community of  
Stylists and stay informed about  
the latest developments.



---

**Produits Vernico Ltée**  
680, Avenue Lépine, Dorval, QC, Canada H9P 2S5  
TEL +1 514 636 4444  
[oligoprofessionnel.com](http://oligoprofessionnel.com)

