

Instruction Manual



C o r t e b e r t



To ensure correct care, please take some time to review the enclosed instructions to review how to operate your watch.

Vol.1.15 EN

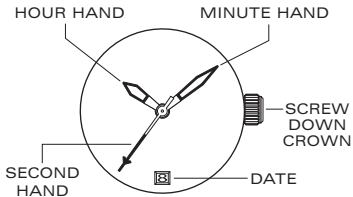
Cortebert

VITESSE

3 HANDS WITH DATE

For more details on operating this timepiece please refer to the enclosed booklet or visit :

IM.CORTEBERT1790.COM

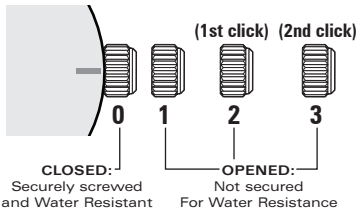


PLEASE READ THE FOLLOWING BEFORE UNSCREWING THE CROWN:

SCREW-DOWN CROWN

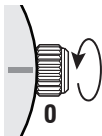
Screw-down crowns are used to ensure water resistance. **ALWAYS** be certain that your crown is securely screwed down (Position [0] is secured. Positions [1], [2] and [3] are not secured for water resistance). Do **NOT** unscrew your crown while you are in any environment where moisture is present.

UNI-DIRECTIONAL TURNING BEZEL



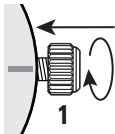
USING THE SCREW-DOWN CROWN

DO **NOT** PULL THE CROWN UNLESS IT IS **UNSCREWED** FIRST:



TO UNSCREW:

Turn the crown anti-clockwise until it turns freely without tension. GENTLY pull the crown out to the other desired positions for watch setting (see specific operating instructions on the following pages).



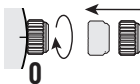
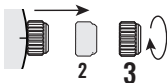
TO SCREW:

Push the crown ALL THE WAY IN (towards the watch) THEN begin to turn clockwise until it is securely screwed down.

NOTE: Failure to SECURELY screw down the crown after setting the watch may affect its water resistance.

HOW TO SET THE TIME

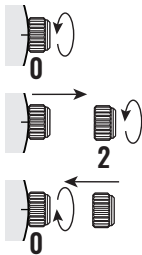
1. Unscrew the crown and pull it out to position [3]-(2nd click).
2. Turn the crown to set the hour and minute hands.
3. Push the crown in then screw it securely.



- * Take a.m./p.m. into consideration when setting the hour and minute hands to the desired time.
- * Always be certain that your crown is SECURELY SCREWED; this will prevent moisture from entering in. 4

HOW TO SET THE DATE

1. Unscrew the crown and pull it out to position [2]-(1st click).
2. Turn the crown clockwise. The date will advance 1 day when the time reaches 00:00 midnight. Continue to turn the crown for the desired date.
3. Push the crown in then screw it securely.



* Do not set the date between 9:00 P.M. and 4:00 A.M.

WATER RESISTANCE

The water resistance indicated on your timepiece serves only as a guide. Actual water resistance may vary depending on a number of important factors including temperature, water salinity, and actual use under water.

The water resistance of your timepiece may eventually be compromised over time with general wear and tear and the use of your watch under adverse conditions.

Always remember to employ the screw down crown (if available) to maintain the water resistance of your timepiece. Warranty may be voided if the screw down crown has not been properly employed.

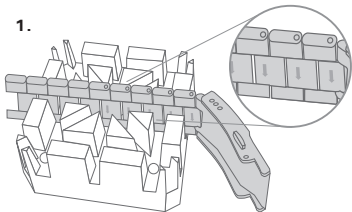
Note that you should **NEVER** wear your watch in a jacuzzi, hot shower or steam room where steam may enter the case despite the watertight seals used to protect your watch.

The steam may cause condensation inside your watch, which may affect and damage the inner workings of your watch – which would also not be covered by the warranty.

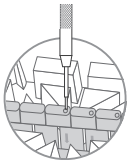
HOW TO RESIZE METAL BRACELET

On the inside of the bracelet, you will see some small arrows engraved on removeable links.

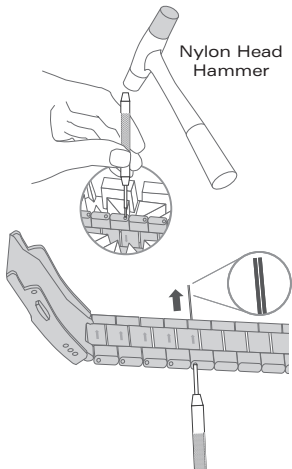
1.



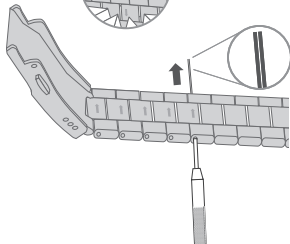
2.



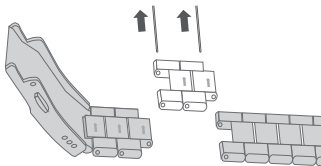
3.



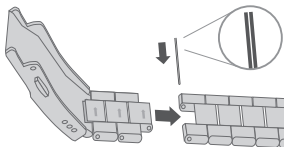
4.



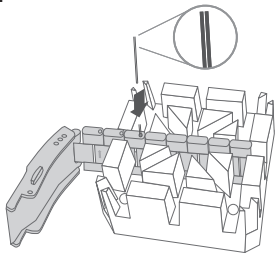
5.



6.

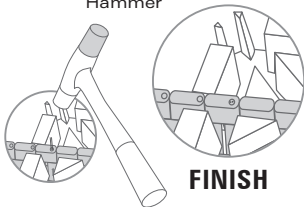


7.



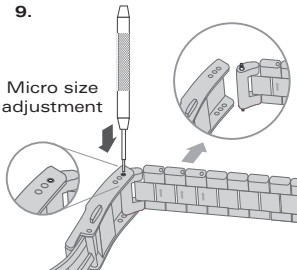
8.

Nylon Head
Hammer

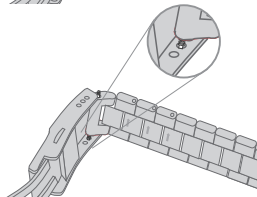


9.

Micro size
adjustment



10.



11.

12.

