

Instruction Manual



C o r t e b e r t



To ensure correct care, please take some time to review the enclosed instructions to review how to operate your watch.

Vol.1.01 EN

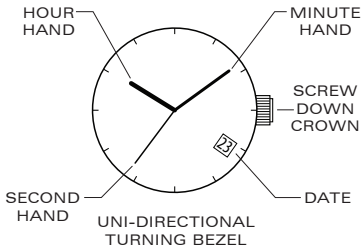
Cortebert FLOTILLE

Swiss Movement

This timepiece is equipped with a Swiss Made movement.

For more details on operating this timepiece please refer to the enclosed booklet or visit :

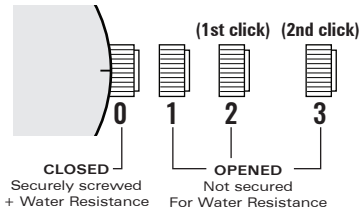
IM.CORTEBERT1790.COM



PLEASE READ THE FOLLOWING BEFORE UNSCREWING THE CROWN:

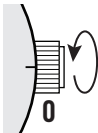
SCREW-DOWN CROWN

Screw-down crowns are used to ensure water resistance. **ALWAYS** be certain that your crown is securely screwed down (Position [0] is secured. Positions [1], [2] and [3] are not secured for water resistance). Do **NOT** unscrew your crown while you are in any environment where moisture is present.

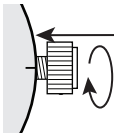


USING THE SCREW-DOWN CROWN

DO **NOT** PULL THE CROWN UNLESS IT IS *UNSCREWED* FIRST:



TO UNSCREW: Turn the crown anti-clockwise until it turns freely without tension. GENTLY pull the crown out to the other desired positions for watch setting (see specific operating instructions on the following pages).

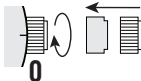
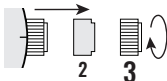


TO SCREW: Push the crown ALL THE WAY IN (towards the watch) THEN begin to turn clockwise until it is securely screwed down.

NOTE: Failure to SECURELY screw down the crown after setting the watch may affect its water resistance.

HOW TO SET THE TIME

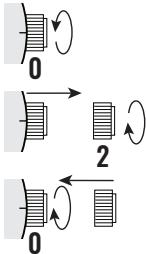
1. Unscrew the crown and pull it out to position [3]-(2nd click).
2. Turn the crown clockwise to set the correct time.
3. Push the crown in then screw it securely.



- * Take A.M./P.M. into consideration when setting the hour and minute hands to the desired time.
- * Always be certain that your crown is SECURELY SCREWED; this will prevent moisture from entering in.

HOW TO SET THE DATE

1. Unscrew the crown and pull it out to position **[2]**.
2. Turn the crown clockwise to set the correct date.
3. Push the crown in then screw it securely.

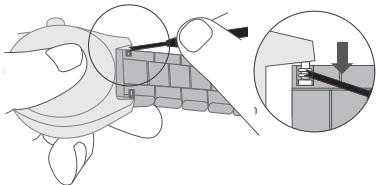


* Do not set the date between 9:00 P.M. and 4:00 A.M.

HOW TO CHANGE BRACELET TO STRAP

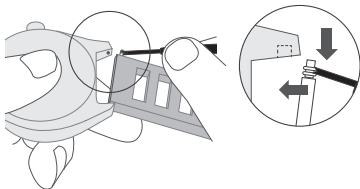
Strap Changing end → 

A.



1. Use the Strap Tool, place the strap changing end between the lug and the bracelet to reach the metal pin.
2. Push down to release the spring and remove the bracelet.

B.



3. Move the pins from the bracelet to the new strap.
4. Place the pin end to the lug hole.
5. Use the tool again to push down the spring so that the pin end reaches the hole for fastening.

WATER RESISTANCE

The water resistance indicated on your timepiece serves only as a guide. Actual water resistance may vary depending on a number of important factors including temperature, water salinity, and actual use under water.

The water resistance of your timepiece may eventually be compromised over time with general wear and tear and the use of your watch under adverse conditions.

Always remember to employ the screw down crown (if available) to maintain the water resistance of your timepiece. Warranty may be voided if the screw down crown has not been properly employed.

Note that you should **NEVER** wear your watch in a jacuzzi, hot shower or steam room where steam may enter the case despite the watertight seals used to protect your watch.

The steam may cause condensation inside your watch, which may affect and damage the inner workings of your watch – which would also not be covered by the warranty.