

# MARIEBELLE NEW YORK CHOCOLATES



2024 CATALOG

# ABOUT MARIEBELLE NEW YORK



**Founder & CEO**  
Maribel Lieberman

MarieBelle New York founder and CEO Maribel Lieberman was born and raised near the cacao fields of Honduras and, as a young girl, she made and sold sweets to the local community. She emigrated to the U.S. and studied at The Parsons School of Design where she developed her innate sensibility for luxury goods, fine food and elegant fashion. She launched her entrepreneurial career in the 90's with Maribel Gourmet Cuisine, a catering enterprise serving high-profile clients, U.S. Diplomats, and a U.S. President. In October, 2000, Maribel opened the doors of her first retail shop, Lunettes Et Chocolat. This was an eclectic boutique offering designer eyewear and handmade chocolates. Shortly after in 2001, Maribel opened MarieBelle New York (NY) in Soho. MarieBelle NY quickly gained a loyal following from local and international customers with discerning palettes. Word made it to Oprah about MarieBelle NY and her unparalleled Aztec Hot Chocolate, which she announced as one of her “favorite things”. From these beginnings, MarieBelle NY is recognized as a top chocolate house with stores in New York and Japan.

MARIEBELLE NEW YORK IS PROUD TO BE:

- A Woman-Owned Business;
- Made in NYC at our Brooklyn factory;
  - Minority Owned;
  - Creative, Delectable, Impactful;
- And, to offer a wide array of customization options!

Maribel has stayed true to her roots and love of chocolate using cacao from her native Honduras and supporting women farmers. As a proud New Yorker working in her Brooklyn factory, the artisanal ganache is handmade with the finest ingredients and all-natural flavors. Other exquisite offerings include hot chocolate, truffles, bars, and luscious bites, all presented in artistic packaging.



# OUR EXPERTISE

MARIEBELLE  
NEW YORK

The MarieBelle Corporate Sales Representatives and Designers are dedicated to providing a seamless experience to create unique, inspired designs staying true to your brand identity and message. From start to finish, we listen to your needs and take pride in your final artistic creation to be shared.

## MARIEBELLE OFFERINGS

- Corporate Pricing
- Digital Mock-Ups
- Subscription Gifting
- Dedicated Sales Team
- Shipping Preferences

## AT YOUR SERVICE

Benefit from our Corporate Sales Team expertise readily available to assist and give ideas on the best way to make your gift unique, impactful, memorable, and to arrive on time.

## CUSTOMIZATION

Our designers will create and share their suggestions along with a digital mockup to give a full picture of the gift you're envisioning. To begin, simply send a pdf to: [corporate@mariebelle.com](mailto:corporate@mariebelle.com).

## SUBSCRIPTION GIFTING

Our team will keep a calendar and ship sweet expressions for Birthday, Anniversary, Retirement, New Hires or Baby. You complete our shipping spreadsheet, we do the rest.

## SPECIALIZED DELIVERY

- Gift destination climate conditions are considered and packed accordingly.
- Shipping available for multiple addresses, directly to each recipient.
- Tracking information provided upon request.
- Consultation on the "best way" to ship.

**Prices shown are in effect and may be revised at any time.**

**Please consider "optimal freshness date" when placing order.**

**Best if stored at 60-68° F and consumed at room temperature.**

- All Kosher items are designated with 

## To Request A Quote

Corporate pricing available upon request

Email: [corporate@mariebelle.com](mailto:corporate@mariebelle.com)

Call: 833-940-6170

We strive to respond with 24 business hours



# CUSTOMIZATION OPTIONS

Welcome to MarieBelle New York's speciality: crafting customizable, edible pieces of art since 2000. Simply send us your logo, design, or sentiment - and we'll eagerly assist every step of the process.

A sweet luxury for any event, our artisanal chocolates are the perfect for: VIP gifting, Employee Recognition, Activations, Meetings, Favors, GWP, Incentives or Trade Shows, the possibilities are endless...

And because the interior is just as important as the presentation, you can further enhance your gift by customizing additional flourishes:

## CHOCOLATE GANACHE

Choose from over eight box sizes to accommodate your unique chocolate ganache.

## SLEEVES

Pick a stylish exterior to complement your own personalized pieces of art.

## INSERTS

A personalized gift enclosure or card that can be placed within each gift.

## HANGTAGS & RIBBONS

Add the final touch of decadence for a picture perfect presentation.

*Additional*

## CUSTOMIZATION OFFERING

## FULL PACKAGING

Elevate the experience with a box that is completely customized with your branding; MOQ applies and timeline of 8 - 12 weeks.

## PRIVATE LABEL

Luxury at its fullest; your own packaging or design this is the ultimate indulgence in gift-giving and perfect for product launches or a long term gifting; MOQ applies and timeline of 8 - 12 weeks.





# HOSPITALITY

Welcome your guests, whether for an extended stay, meeting or special occasion. It's the extra thought to detail, creating a gift that is your own and true to your brand identity that evokes an everlasting impact, indelible memory or heartwarming welcome.

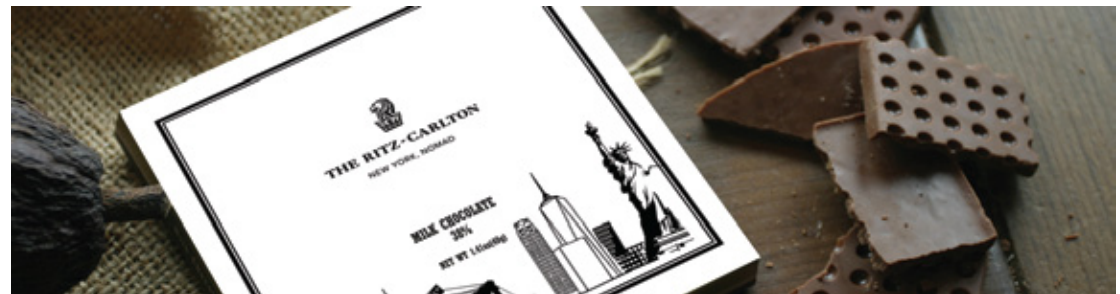
VIP's, Meetings, Events



Amenity, Retail Gifting



Turndown Service,  
Loyalty Programs



Welcome Packages,  
Minibar Indulgences



# MOTHER'S DAY COLLECTION

## MOTHER'S DAY 16PC CHOCOLATE GANACHE

**Description:** With exquisite taste and beautiful presentation, this gourmet box of delectable chocolates for Mother's Day opens to reveal precious mouthwatering jewels within; 16 pieces of artfully crafted chocolate ganache, each hand-made with artisanal techniques using the finest quality of cacao and freshest ingredients to ensure a truly indulgent and unforgettable (tasting) experience.

Elegantly presented with a Gustave Klimt's inspiration, this enchanting box of gourmet delights opens to reveal 16 pieces of gourmet Mother's Day chocolate ganache, each artfully highlighted with whimsically-inspired designs that evoke all the love for Mom.

**Optimal Freshness:** Six weeks  
**Dimensions:** 4.1" x 4.1" x 1.5"  
**SKU:** 391062  
**Price:** \$59.00

\$59<sup>00</sup>



\$30<sup>00</sup>

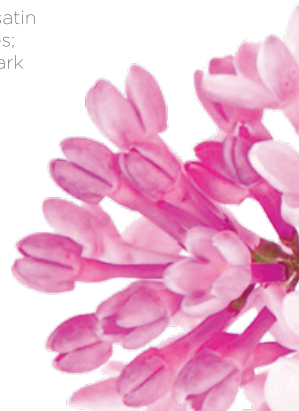
## MOTHER'S DAY PURSE WITH DARK CHOCOLATE TRUFFLES

**Description:** Treat Mom to stylish decadence this Mother's Day with this exclusive mini MarieBell Fashion Tote from MarieBelle New York Mother's Day Collection of Chocolate Gifts.

Made from vegan leather emblazoned with our signature logo and beautifully accented with a complementary satin ribbon, this fashionable trove of treasures opens and contains eight of our most indulgent dark chocolate truffles; each hand-made using the finest Maracaibo chocolate, blended with fresh cream, and then hand dusted with dark Swiss cocoa powder for that rich, velvety texture.

Trendy yet timeless, this limited edition Mother's Day gift is truly a fashionable treat that is both beautiful and delicious; a perfect token of love and gratitude for the woman who appreciates luxury, even in bite-size!

**Optimal Freshness:** Six weeks  
**Dimensions:** 4.5" x W: 2" x H: 3.5"  
**SKU:** 395909  
**Price:** \$30.00





# MOTHER'S DAY COLLECTION

## MOTHER'S DAY GOURMET CHOCOLATE GIFT SET

**Description:** Celebrate the mother figure in your life this spring with some of her favorite things: gourmet chocolates from MarieBelle New York's limited edition collection of Mother's Day Chocolates.

Beautifully presented in an elegant spring-inspired sleeve, our Mother's Day Gourmet Gift Set opens to reveal a luxurious collection of artisanal delights: a miniature heart-shaped box holding within seven pieces of our Mother's Day chocolate ganache, each made with the finest quality of cacao and all-natural ingredients.

To complement such rich and indulgent chocolate, we've paired it with our Dark Chocolate Rose Tea, celebrated for its enchanting aroma and delicate floral notes. Alongside, we've also included a charming tea strainer (with a velvet bag for storage) to ensure that every cup served is a true work of art.

**Optimal Freshness:** Six weeks (ganache)  
**Dimensions:** 4.1" x 4.1" x 1.5"  
**SKU:** 395282  
**Price:** \$70.00

\$70<sup>00</sup>



\$84<sup>00</sup>

## MOTHER'S DAY 25PC CHOCOLATE GANACHE

**Description:** Whether you're looking to celebrate your mom, grandmother, or another special woman in your life, MarieBelle New York's collection of gourmet Mother's Day chocolates is the sweetest way to express your love and appreciation.

Beautifully crafted to enchant and delight, this splendid heart-shaped gift box opens to reveal precious, mouthwatering jewels within: 25 pieces of artfully crafted chocolate ganache, each hand-made with artisanal techniques using the finest quality of cacao and freshest ingredients to ensure a truly indulgent and unforgettable (tasting) experience.

With tempting, mouth-watering flavors exclusive to Mother's Day Ganache like raspberry cheesecake, tiramisu, and orange, each piece of ganache tells a unique story. Expertly packaged with a luxurious ribbon for a picture-perfect presentation, this heart-shaped box is a true work of chocolate mastery that will undoubtedly leave Mom's taste buds craving for more.

**Optimal Freshness:** Six weeks  
**Dimensions:** 13.0" x 11.5" x 1.8"  
**SKU:** 395909  
**Price:** \$84.00

# CHOCOLATE GIFT SETS

\$55<sup>00</sup>



## HOT CHOCOLATE DUO

**Description:** 10oz Aztec Hot Chocolate, 10oz Aztec Milk + Hazelnut Hot Chocolate.  
**Optimal Freshness:** Twelve months  
**Dimensions:** 12.5" x 4.5" x 3.5"  
**SKU:** 371680  
**Price:** \$55.00

\$165<sup>00</sup>



## ICAZA

**Description:** 16pc Chocolate Ganache, 9pc Dark + Milk Chocolate Clusters, Milk Chocolate Pearls, Dark Chocolate Pearls, Milk Chocolate Almonds, Dark Chocolate Almonds.  
**Optimal Freshness:** Varies By Product  
**Dimensions:** 10" x 8.5" x 5"  
**SKU:** 393356  
**Price:** \$165.00

\$47<sup>00</sup>



## EUGENIE

**Description:** 4pc Chocolate Ganache, Dark Chocolate Covered Orange Peels, Single Cup of Aztec Hot Chocolate  
**Optimal Freshness:** Varies By Product  
**Dimensions:** 6.5" x 4" x 3.5"  
**SKU:** 393363  
**Price:** \$47.00

\$75<sup>00</sup>



## VERSAILLES

**Description:** 6oz Aztec Hot Chocolate, 6oz Aztec Milk + Hazelnut Hot Chocolate, 4pc Chocolate Ganache, 8pc Mini Champagne Truffles.  
**Optimal Freshness:** Varies By Product  
**Dimensions:** 12.5" x 4.5" x 3.5"  
**SKU:** 391567  
**Price:** \$75.00

\$60<sup>00</sup>



## TENTATION

**Description:** 2 Hot Chocolate Frack Packs (Aztec + Milk/Hazelnut), 9pc New York City Chocolate Ganache, packaged in a New York themed lunchbox.  
**Optimal Freshness:** Six weeks  
**Dimensions:** 4.5" x 5.5" x 3.1"  
**SKU:** 390355  
**Price:** \$60.00

\$35<sup>00</sup>



## CHANTILLY

**Description:** 2 Hot Chocolate Frack Packs (Aztec + Milk/Hazelnut), 40gr Chocolate Bars (70% Dark Chocolate + 38% Milk Chocolate Bar), packaged in a MarieBelle themed lunchbox.  
**Optimal Freshness:** Twelve months  
**Dimensions:** 4.5" x 5.5" x 3.1"  
**SKU:** 370828  
**Price:** \$35.00

\$55<sup>00</sup>



## EMILY

**Description:** Two 2oz tins of premium loose-leaf tea: Guava Tea and Jasmine Tea along with crystalized ginger candies and tea strainer and recipe card, packaged in a MarieBelle tote box with chain.  
**Optimal Freshness:** Twelve months  
**Dimensions:** 4.5" x 5.5" x 3.1"  
**SKU:** 370392  
**Price:** \$55.00

**Please keep in mind:** Gift selections are based on availability; MarieBelle New York Chocolates reserves the right to replace a product of equal or higher value.



# CHOCOLATE GANACHE: SIGNATURE COLLECTION



MarieBelle New York creates a world-renowned collection of handmade ganache that combines the finest single-origin chocolate paired with carefully selected natural flavors. The artistry of each piece is not only pleasing to the palate but also a treat for the eyes with rich colors and designs decorating the ganache, known as “edible art”. The collection boasts over 20 recipes with notes of different cacaos, fruits, nuts, florals and spices. The presentation is just as enticing with each ganache hand placed in our illustrious blue box delighting all the senses.

## SIGNATURE YEAR-ROUND DESIGNS & FLAVORS



**COGNAC**  
Milk chocolate mixed with warm, full-bodied flavors of aged French Cognac.



**TOFFEE**  
Rich dark chocolate crafted with sweet notes of vanilla caramel.



**WILDBERRY**  
Fresh purees of blackberry, raspberry, blueberry and strawberry mixed with milk and dark chocolate.



**MINT**  
White chocolate ganache infused with fresh mint and covered in dark chocolate.



**WHISKEY**  
Dark chocolate ganache mixed with single malt Speyside Scotch.



**COCONUT**  
Smooth white chocolate mixed with shredded roasted coconut coated with rich dark chocolate.



**LAVENDER**  
Dark chocolate infused with English lavender flowers from Provence.



**LEMON**  
Milk chocolate ganache infused with fresh squeezed lemon juice and zest.



**DULCE DE LECHE**  
White chocolate with notes of caramelized sugar of the classic Latin American confection.



**PASSION FRUIT**  
A puree of passion fruit mixed with milk chocolate and then covered in rich dark chocolate.



**HAZELNUT**  
Hazelnut praline and refined hazelnut flour with a texture reminiscent of marzipan.



**CINNAMON**  
Milk chocolate blended with ground caramelized Moroccan cinnamon sticks.



**PISTACHIO**  
A blend of refined flour and paste of roasted pistachios blended with white chocolate.



**EARL GREY TEA**  
A mix of milk, 60% and 70% chocolate infused with Jasmine Tea.



**MATCHA**  
White chocolate gracefully combined with Japanese Matcha tea.



**MILK CHOCOLATE**  
Silky milk chocolate ganache blanketed in dark chocolate.



**CARDAMON**  
Popular Indian spice roasted, caramelized, and infused with dark and milk chocolate.



**VANILLA**  
Milk and dark chocolate infused with hints of cherry and the finest Tahitian vanilla.



**ROSE PETAL**  
Dark chocolate combined perfectly with soothing flavors of rose petals.



**ESPRESSO**  
Milk chocolate infused with Arabica beans for a profound coffee flavor.



**MADAGASCAR**  
Dark chocolate made from Trinitario cacao beans tasting of wild berry, clove, cedar, and roasted hazelnut.



**CARAMEL SEA SALT**  
Creamy milk chocolate with notes of caramel and sea salt covered in rich dark chocolate.

# CHOCOLATE GANACHE: SIGNATURE COLLECTION

\$13<sup>00</sup>



**2pc Chocolate Ganache Tote Box**  
**Optimal Freshness:** Six weeks  
**Dimensions:** 3" x 2" x 1.5"  
**SKU:** 313073  
**Price:** \$13.00

\$12<sup>00</sup>



**2pc Chocolate Ganache Party Favor Creme Box**  
**Optimal Freshness:** Six weeks  
**Dimensions:** 3" x 2" x 1.5"  
**SKU:** 310910  
**Price:** \$11.00

**2pc Chocolate Ganache Party Favor Blue Box**  
**Optimal Freshness:** Six weeks  
**Dimensions:** 3" x 2" x 1.5"  
**SKU:** 310095  
**Price:** \$12.00

\$21<sup>00</sup>



**4pc Chocolate Ganache Blue Box**  
**Optimal Freshness:** Six weeks  
**Dimensions:** 3.1" x 3.1" x 1.5"  
**SKU:** 310101  
**Price:** \$21.00

\$27<sup>00</sup>



**6pc Chocolate Ganache Blue Box**  
**Optimal Freshness:** Six weeks  
**Dimensions:** 1.25" x 8.75" x 1.5"  
**SKU:** 310194  
**Price:** \$27.00

\$38<sup>00</sup>



**9pc Chocolate Ganache Blue Box**  
**Optimal Freshness:** Six weeks  
**Dimensions:** 4.1" x 4.1" x 1.5"  
**SKU:** 310118  
**Price:** \$38.00

\$59<sup>00</sup>



**16pc Chocolate Ganache Blue Box**  
**Optimal Freshness:** Six weeks  
**Dimensions:** 5.75" x 5.7" x 1.5"  
**SKU:** 310125  
**Price:** \$59.00

\$84<sup>00</sup>



**25pc Chocolate Ganache Blue Box**  
**Optimal Freshness:** Six weeks  
**Dimensions:** 6.75" x 6.75" x 1.5"  
**SKU:** 310132  
**Price:** \$84.00

\$108<sup>00</sup>



**36pc Chocolate Ganache Blue Box**  
**Optimal Freshness:** Six weeks  
**Dimensions:** 8.5" x 8.5" x 1.5"  
**SKU:** 310149  
**Price:** \$108.00

\$319<sup>00</sup>



**100pc Chocolate Ganache Blue Box**  
**Optimal Freshness:** Six weeks  
**Dimensions:** 13" x 13" x 2"  
**SKU:** 313080  
**Price:** \$319.00

**Please Note:** Ganache flavors are based on availability, we reserve the right to substitute flavors and designs.



# CHOCOLATE GANACHE: NEW YORK CITY COLLECTION



\$35<sup>00</sup>



## 9pc New York City Chocolate Ganache

**Optimal Freshness:** Six weeks  
**Dimensions:** 4.1" x 4.1" x 1.5"  
**SKU:** 310163  
**Price:** \$35.00

\$54<sup>00</sup>



## 16pc New York City Chocolate Ganache

**Optimal Freshness:** Six weeks  
**Dimensions:** 5.75" x 5.7" x 1.5"  
**SKU:** 310187  
**Price:** \$54.00

\$77<sup>00</sup>



## 25pc New York City Chocolate Ganache

**Optimal Freshness:** Six weeks  
**Dimensions:** 6.75" x 6.75" x 1.5"  
**SKU:** 310904  
**Price:** \$77.00



ESPRESSO

MADAGASCAR

TOFFEE

WILDBERRY

DULCE DE LECHE

“

The sweetest way to savour the memory of New York City - one bite at a time.



MILK CHOCOLATE

PISTACHIO

HAZELNUT

SEA SALT CARAMEL

COCONUT

VANILLA

PASSION FRUIT

LEMON



# CHOCOLATE TRUFFLES

Tempt the senses with our chocolate truffles made using the finest Maracaibo chocolate blended with fresh cream and dusted with dark Swiss cocoa powder. Each of these European-inspired gourmet truffles comes elegantly packaged in a brown embossed MarieBelle New York box.

\$33<sup>00</sup>



## 12pc Dark Chocolate Truffle Box

**Description:** 12 pieces of dark chocolate truffles hand-made using the finest Maracaibo chocolate dusted with dark Swiss cocoa powder.

**Optimal Freshness:** Six weeks

**Dimensions:** 4.1" x 4.1" x 1.5"

**SKU:** 335015

**Price:** \$33.00

\$33<sup>00</sup>



## 12pc White Chocolate Truffle Matcha Box

**Description:** 12 piece truffle box made using the finest white chocolate and dusted in Japanese Matcha Tea powder.

**Optimal Freshness:** Six weeks

**Dimensions:** 4.1" x 4.1" x 1.5"

**SKU:** 335008

**Price:** \$33.00

\$43<sup>00</sup>



## 20pc Dark Chocolate Truffle Box

**Description:** 20 pieces of dark chocolate truffles hand-made using the finest Maracaibo chocolate dusted with dark Swiss cocoa powder.

**Optimal Freshness:** Six weeks

**Dimensions:** 5.75" x 5.75" x 1.5"

**SKU:** 334964

**Price:** \$43.00

\$43<sup>00</sup>



## 20pc White Chocolate Truffle Matcha Box

**Description:** 20 piece truffle box made using the finest white chocolate and dusted in Japanese Matcha Tea powder.

**Optimal Freshness:** Six weeks

**Dimensions:** 5.75" x 5.75" x 1.5"

**SKU:** 334971

**Price:** \$43.00





# SIGNATURE HOT CHOCOLATE

Thick and decadent, widely acclaimed MarieBelle Hot Chocolate (voted one of “Oprah’s Favorite Things” among other accolades), is made with rich Honduran single origin chocolate. Remarkably versatile and easy to prepare, it can be mixed with boiling water for a full-flavored European style hot chocolate or with milk for a more traditional American style drink.

\$25<sup>00</sup>  
K



## 10oz Milk/Hazelnut Hot Chocolate Tin

**Description:** 10oz tin of 38% Milk Chocolate and Hazelnut Hot Chocolate made from pure, single-origin milk chocolate.  
**Optimal Freshness:** Twelve months  
**Dimensions:** 3.5" x 3.5" x 4.5"  
**SKU:** 364544  
**Price:** \$25.00

\$25<sup>00</sup>  
K



## 10oz Spiced Hot Chocolate Tin

**Description:** 10oz tin of Spiced Milk Chocolate with a mix of chipotle ancho chili, cinnamon and nutmeg.  
**Optimal Freshness:** Twelve months  
**Dimensions:** 3.5" x 3.5" x 4.5"  
**SKU:** 360088  
**Price:** \$25.00

\$25<sup>00</sup>  
K



## 10oz Aztec Hot Chocolate Tin

**Description:** A 20oz tin of our famously rich and decadent, signature Aztec Hot Chocolate.  
**Optimal Freshness:** Twelve months  
**Dimensions:** 3.5" x 3.5" x 4.5"  
**SKU:** 363905  
**Price:** \$25.00

\$29<sup>00</sup>  
K



## 16oz Maya Sugar-Free Hot Chocolate Tin

**Description:** A guilt-free option with our sugarless variation.  
**Optimal Freshness:** Twelve months  
**Dimensions:** 4" x 4" x 4.75"  
**SKU:** 361314  
**Price:** \$29.00

\$33<sup>00</sup>  
K



## 20oz Aztec Hot Chocolate Tin

**Description:** A 20oz tin of our famously rich and decadent, signature Aztec Hot Chocolate.  
**Optimal Freshness:** Twelve months  
**Dimensions:** 4" x 4" x 4.25"  
**SKU:** 360019  
**Price:** \$33.00

# SIGNATURE HOT CHOCOLATE

\$31<sup>00</sup>



## 20oz Maya Hot Chocolate Refill Bag

**Description:** Top up your favorite beverage with our sugar-free Maya hot chocolate.

**Optimal Freshness:** Twelve months

**Dimensions:** 10" x 5" x 2.5"

**SKU:** 360591

**Price:** \$31.00

\$31<sup>00</sup>



## 20oz Aztec Dark Hot Chocolate Refill Bag

**Description:** Top up your favorite beverage with our world famous Aztec hot chocolate.

**Optimal Freshness:** Twelve months

**Dimensions:** 10" x 5" x 2.5"

**SKU:** 364919

**Price:** \$31.00

\$31<sup>00</sup>



## 20oz Milk/Hazelnut Hot Chocolate Refill Bag

**Description:** Top up your favorite beverage with our classic Milk and Hazelnut Hot Chocolate

**Optimal Freshness:** Twelve months

**Dimensions:** 10" x 5" x 2.5"

**SKU:** 364872

**Price:** \$31.00

\$24<sup>00</sup>



## Single Serving Hot Chocolate (Pack of 4)

**Description:** Taste our two favorite hot chocolate flavors, Aztec and Milk + Hazelnut Hot Chocolate, in singles, on-the-go packs.

**Optimal Freshness:** Twelve months

**Dimensions:** 5.25" x 5" x .25"

**SKU:** 360362

**Price:** \$24.00

\$6<sup>00</sup>



## Single Serving Hot Chocolate Cup

**Description:** For when on-the-go, enjoy our newest addition: a single serving cup of everyone's favorite hot chocolate flavor: Aztec.

**Optimal Freshness:** Twelve months

**Dimensions:** 2.75" x 2.75"

**SKU:** 360927

**Price:** \$6.00



# CHOCOLATE BARS

\$13<sup>00</sup>



## 80gr Almond + Dark Chocolate

**Description:** Crafted using the highest quality of cacao contrasted with caramelized almonds.  
**Optimal Freshness:** Twelve months  
**Dimensions:** 7" x 3.5" x .8"  
**SKU:** 415862  
**Price:** \$13.00

\$13<sup>00</sup>



## 80gr Matcha + White Chocolate

**Description:** The refreshing flavor of Matcha perfectly paired with high-quality white chocolate.  
**Optimal Freshness:** Twelve months  
**Dimensions:** 7" x 3.5" x .8"  
**SKU:** 415886  
**Price:** \$13.00

\$13<sup>00</sup>



## 80gr 70% Dark Chocolate

**Description:** 80gr of dark chocolate representing the best of every variety of cacao.  
**Optimal Freshness:** Twelve months  
**Dimensions:** 7.2" x 3.5" x .8"  
**SKU:** 410997  
**Price:** \$13.00

\$13<sup>00</sup>



## 80gr Sea Salt + Milk Chocolate

**Description:** Using the highest quality cacao perfectly contrasted with all-natural sea salt.  
**Optimal Freshness:** Twelve months  
**Dimensions:** 7" x 3.5" x .8"  
**SKU:** 415695  
**Price:** \$13.00



\$8<sup>00</sup>



## 50gr Bourbon Pecan Milk Chocolate Bar

**Description:** Mouthwatering milk chocolate bar with yogurt pieces and bourbon coated pecans.  
**Optimal Freshness:** Twelve months  
**Dimensions:** 4.2" x 4.2" x 0.4"  
**SKU:** 413257  
**Price:** \$8.00

\$13<sup>00</sup>



## 80gr Espresso + Dark Chocolate

**Description:** Crafted using the highest quality of cacao contrasted with all-natural espresso beans.  
**Optimal Freshness:** Twelve months  
**Dimensions:** 7" x 3.5" x .8"  
**SKU:** 415732  
**Price:** \$13.00

# CHOCOLATE COVERED BITES

\$17<sup>00</sup>  
K



## Milk Chocolate Pearls

**Description:** Small and perfectly bitesize, these milk chocolate pearls pack a lot of flavor despite their delicate size.

**Optimal Freshness:** Twelve months

**Dimensions:** 1.75" x 1.75" x 6.5"

**SKU:** 322519

**Price:** \$17.00

\$17<sup>00</sup>  
K



## Dark Chocolate Pearls

**Description:** These tiny, crunchy dark chocolate pearls pack a lot of flavor to satisfy any sweet tooth cravings

**Optimal Freshness:** Twelve months

**Dimensions:** 1.75" x 1.75" x 6.5"

**SKU:** 322502

**Price:** \$17.00

\$17<sup>00</sup>  
K



## Milk Chocolate Covered Almonds

**Description:** Bite-sized almonds coated with milk chocolate.

**Optimal Freshness:** Twelve months

**Dimensions:** 1.75" x 1.75" x 6.5"

**SKU:** 322496

**Price:** \$17.00

\$17<sup>00</sup>  
K



## Dark Chocolate Covered Almonds

**Description:** Bite-sized almonds coated with dark chocolate.

**Optimal Freshness:** Twelve months

**Dimensions:** 1.75" x 1.75" x 6.5"

**SKU:** 322489

**Price:** \$17.00

\$17<sup>00</sup>  
K



## Dark Chocolate Covered Blueberries

**Description:** Dark chocolate with a blueberry in the center.

**Optimal Freshness:** Twelve months

**Dimensions:** 1.75" x 1.75" x 6.5"

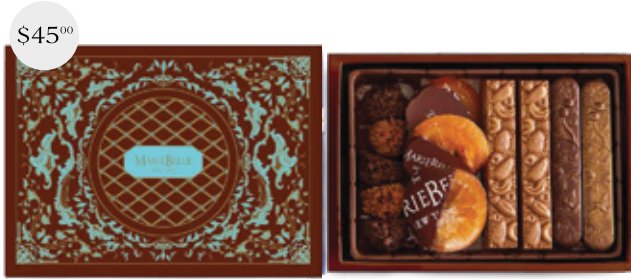
**SKU:** 326005

**Price:** \$17.00





# CHOCOLATE BITES



\$45<sup>00</sup>

## Indulgence Chocolate Gift Set

**Description:** Milk and dark clusters, dark chocolate covered orange slices milk, and both milk and dark chocolate decorated tablets.

**Optimal Freshness:** Six weeks

**Dimensions:** 6" x 8" x 2.5"

**SKU:** 371512

**Price:** \$45.00



\$21<sup>00</sup>

## 4pc Chocolate Ganache Brownie Tin

**Description:** Handcrafted chocolate ganache brownies topped with thick chocolate chunks for extra texture and richness.

**Optimal Freshness:** One week; may freeze product up to 6 months.

**Dimensions:** 6.75" x 6.75" x 1.75"

**SKU:** 375602

**Price:** \$21.00



\$38<sup>00</sup>

## 9pc Chocolate Ganache Brownie Box

**Description:** Handcrafted chocolate ganache brownies topped with thick chocolate chunks for extra texture and richness.

**Optimal Freshness:** One week; may freeze product up to 6 months.

**Dimensions:** 8.5" x 8.5" x 1.5"

**SKU:** 355183

**Price:** \$38.00



\$19<sup>00</sup>

## 9pc Chocolate Clusters

**Description:** French croquette cookies hand-rolled in milk and dark chocolate.

**Optimal Freshness:** Twelve months

**Dimensions:** 4.25" x 4.25" x 1.5"

**SKU:** 312908

**Price:** \$19.00



\$12<sup>00</sup>

## Praline Chocolate Bars

**Description:** Milk chocolate with crushed hazelnuts and crunchy wafers.

**Optimal Freshness:** Six weeks

**Dimensions:** 3.3" x 6" x 1.2"

**SKU:** 311246

**Price:** \$12.00



\$35<sup>00</sup>

## 16pc Armagnac Dark Chocolate Dipped Cherries

**Description:** Fresh Morello cherries hand-infused with Armagnac brandy and then covered with a dark chocolate outer shell.

**Optimal Freshness:** Six months

**Dimensions:** 4.1" x 4.1" x 1.5"

**SKU:** 355183

**Price:** \$35.00



\$22<sup>00</sup>

## Crispy Chocolate Toffee

**Description:** Puffed brown rice blended with high-grade cacao and vanilla extract.

**Optimal Freshness:** Six months

**Dimensions:** 4.25" x 4.25" x 1.5"

**SKU:** 354360

**Price:** \$22.00



\$19<sup>00</sup>

## Dark Chocolate Covered Orange Peels

**Description:** Sweet notes of orange citrus peels balanced with rich dark chocolate.

**Optimal Freshness:** Six months

**Dimensions:** 3.3" x 3.3" x 1.2"

**SKU:** 424803

**Price:** \$19.00



\$21<sup>00</sup>

## Fin du Chocolate Grand

**Description:** Petite chocolate tablets ranging in milk and dark chocolate.

**Optimal Freshness:** Six weeks

**Dimensions:** 1.25" x 5.75" x 1.5"

**SKU:** 373813

**Price:** \$21.00

# SIGNATURE TEA COLLECTION



\$55<sup>00</sup>

## EMILY

**Description:** Elevate your tea experience with two 2oz tins of our premium loose-leaf tea: Guava Tea and Jasmine Tea along with crystallized ginger candies and tea Strainer and recipe card - all included in this classic Lunchbox Purse with Chain.  
**Optimal Freshness:** Twelve months  
**Dimensions:** 4.5" x 5.5" x 3.1"  
**SKU:** 370392  
**Price:** \$55.00



\$21<sup>00</sup>

## 4oz Loves Labour Lychee Tea

**Description:** Hints of grandeur for tea time.  
**Optimal Freshness:** Twelve months  
**Dimensions:** 1" x 3" x 3"  
**SKU:** 380453  
**Price:** \$21.00



\$21<sup>00</sup>

## 4oz Royal English Breakfast Tea

**Description:** Perfectly suited for the pickiest of tea-lovers.  
**Optimal Freshness:** Twelve months  
**Dimensions:** 1" x 3" x 3"  
**SKU:** 380439  
**Price:** \$21.00



\$21<sup>00</sup>

## 4oz Dark Chocolate Rose Tea

**Description:** Fusion of exotic fruits and flowers.  
**Optimal Freshness:** Twelve months  
**Dimensions:** 1" x 3" x 3"  
**SKU:** 380477  
**Price:** \$21.00



\$21<sup>00</sup>

## 4oz Scent Of Night Jasmine Tea

**Description:** Delicious combinations of all-natural flavors.  
**Optimal Freshness:** Twelve months  
**Dimensions:** 1" x 3" x 3"  
**SKU:** 380491  
**Price:** \$21.00



\$23<sup>00</sup>

## 6oz Guava Tea

**Description:** A delicious fusion of exotic fruits.  
**Optimal Freshness:** Twelve months  
**Dimensions:** 2.75" x 3.75" x 2.75"  
**SKU:** 380668  
**Price:** \$23.00



\$21<sup>00</sup>

## 4oz Premium Earl Grey Tea

**Description:** Perfect for the pickiest of tea-lovers.  
**Optimal Freshness:** Twelve months  
**Dimensions:** 1" x 3" x 3"  
**SKU:** 380415  
**Price:** \$21.00



\$21<sup>00</sup>

## 4oz Blooming Heavens Chinese Flower Tea

**Description:** Delicious combinations of all-natural flavors.  
**Optimal Freshness:** Twelve months  
**Dimensions:** 1" x 3" x 3"  
**SKU:** 380590  
**Price:** \$21.00



# CACAO MARKET CARAMELS

Our collection of chocolate caramels arrives packaged inside an exclusive New York-inspired box each containing images of iconic neighborhoods across the New York boroughs, making it the tastiest souvenir for gifting and sharing with friends and family.



\$29<sup>00</sup>



## 9pc New York Chocolate Caramel Collection

**Description:** Take a bite out of the Big Apple with chocolate caramels designed with iconic images from across New York.

**Optimal Freshness:** Six months

**Dimensions:** 2" x 4.12" x 4.12"

**SKU:** 345292

**Price:** \$29.00

\$39<sup>00</sup>



## 16pc New York Chocolate Caramel Collection

**Description:** Bite into the city that never sleeps with 16 pieces of chocolate caramels designed with images from across New York.

**Optimal Freshness:** Six months

**Dimensions:** 2" x 5.75" x 5.75"

**SKU:** 345308

**Price:** \$39.00

**Made from creamy dark chocolate and all natural flavors:  
Fleur de Sel, Italian Espresso, and Chocolate Caramel**



# CACAO MARKET CHOCOLATE BARS

\$14<sup>00</sup>



## 80gr Japanese Matcha + White Chocolate

**Description:** White chocolate bars crafted from high quality cacao with all-natural Japanese Matcha Tea.

**Optimal Freshness:** Twelve months

**Dimensions:** 7.5" x 4.1" x .5"

**SKU:** 424780

**Price:** \$14.00

\$14<sup>00</sup>



## 80gr Coffee Toffee Dark Chocolate

**Description:** Handmade with the finest ingredients and accented with flavorful swirls of coffee and toffee.

**Optimal Freshness:** Twelve months

**Dimensions:** 7.5" x 4.1" x .5"

**SKU:** 424865

**Price:** \$14.00

\$14<sup>00</sup>



## 80gr Rose Petal & Hibiscus White Chocolate

**Description:** 80gr of bite-size indulgence with white chocolate with a hint of all-natural flavors and ingredients.

**Optimal Freshness:** Twelve months

**Dimensions:** 7.5" x 4.1" x .5"

**SKU:** 424827

**Price:** \$14.00

\$14<sup>00</sup>



## 80gr 60% Dark Chocolate + Orange Peels

**Description:** 60% dark chocolate handmade from high quality cacao accented with sweet orange peels.

**Optimal Freshness:** Twelve months

**Dimensions:** 7.5" x 4.1" x .5"

**SKU:** 424803

**Price:** \$14.00





# CACAO MARKET CHOCOLATE BARS

\$8<sup>00</sup>



## 40gr 80% Dark Chocolate

**Description:** 80% dark chocolate bar with a pleasant mild cocoa flavor with hints of black tea and slightly sweet cherry notes

**Optimal Freshness:** Twelve months

**Dimensions:** 4.2" x 4.2" x .4"

**SKU:** 420447

**Price:** \$8.00

\$8<sup>00</sup>



## 40gr 70% Dark Chocolate & Pistachio Bar

**Description:** 40-gram bar of 70% dark chocolate with crunchy pistachio nuts, perfect for on-the-go snacking.

**Optimal Freshness:** Twelve months

**Dimensions:** 4.2" x 4.2" x .4"

**SKU:** 421178

**Price:** \$8.00

\$8<sup>00</sup>



## 40gr 70% Dark Chocolate Bar

**Description:** Handcrafted using the highest ingredients, this 40 gram bar of 70% dark chocolate is deliciously addicting.

**Optimal Freshness:** Twelve months

**Dimensions:** 4.2" x 4.2" x .4"

**SKU:** 421109

**Price:** \$8.00

\$8<sup>00</sup>



## 40gr 38% Milk Chocolate Bar

**Description:** Deliciously addicting, 38% milk chocolate handcrafted using the highest quality of cacao and all natural ingredients.

**Optimal Freshness:** Twelve months

**Dimensions:** 4.2" x 4.2" x .4"

**SKU:** 420102

**Price:** \$8.00

\$8<sup>00</sup>



## 40gr Japanese Matcha Tea & White Chocolate Bar

**Description:** Delicious white chocolate infused with Japanese Matcha Tea for the ultimate snacking indulgence.

**Optimal Freshness:** Twelve months

**Dimensions:** 4.2" x 4.2" x .4"

**SKU:** 420157

**Price:** \$8.00

# PIN-UP CHOCOLATE BARS



\$12<sup>00</sup>



## Dolores Vintage Pin-Up Girl

**Description:** Handmade using the finest quality of cacao, stamped with the classic MarieBelle design; available in both milk and dark chocolate.

**Optimal Freshness:** Twelve months

**Dimensions:** 6" x 3.5" x 0.25"

**Milk SKU:** 420720

**Dark SKU:** 420262

**Price:** \$12.00

\$12<sup>00</sup>



## Grace Vintage Pin-Up Girl

**Description:** Handmade using the finest quality of cacao, stamped with the classic MarieBelle design; available in both milk and dark chocolate.

**Optimal Freshness:** Twelve months

**Dimensions:** 6" x 3.5" x 0.25"

**Milk SKU:** 420255

**Dark SKU:** 420713

**Price:** \$12.00

\$12<sup>00</sup>



## Jaqueline Vintage Pin-Up Girl

**Description:** Handmade using the finest quality of cacao, stamped with the classic MarieBelle design; available in both milk and dark chocolate.

**Optimal Freshness:** Twelve months

**Dimensions:** 6" x 3.5" x 0.25"

**Milk SKU:** 420255

**Dark SKU:** 420231

**Price:** \$12.00

\$12<sup>00</sup>



## Daisy Vintage Pin-Up Girl

**Description:** Handmade using the finest quality of cacao, stamped with the classic MarieBelle design; available in both milk and dark chocolate.

**Optimal Freshness:** Twelve months

**Dimensions:** 6" x 3.5" x 0.25"

**Milk SKU:** 420279

**Dark SKU:** 420737

**Price:** \$12.00

\$12<sup>00</sup>



## Margot Vintage Pin-Up Girl

**Description:** Handmade using the finest quality of cacao, stamped with the classic MarieBelle design; available in both milk and dark chocolate.

**Optimal Freshness:** Twelve months

**Dimensions:** 6" x 3.5" x 0.25"

**Milk SKU:** 420316

**Dark SKU:** 420775

**Price:** \$12.00



# SEASONAL COLLECTIONS: MID-AUTUMN FESTIVAL



\$54<sup>00</sup>



DULCE DE LECHE



PASSION FRUIT



PUMPKIN



MILK CHOCOLATE

## 16pc Mid-Autumn Festival Chocolate Ganache Box

**Description:** A symphony of flavors with MarieBelle's signature hand-made chocolate ganache showcasing traditional images of the Mid-Autumn Festival.

**Optimal Freshness:** Six weeks

**Dimensions:** 5.75" x 5.7" x 1.5"

**SKU:** 393684

**Price:** \$54.00

## All Natural Flavors Include:

(Mid-Autumn Festival designs)

## 4pc Mid-Autumn Festival Moon Cake Treasure Box

**Description:** Inspired by the moon's splendor and the magic of the lunar equinox, this elegantly designed box contains four hand-crafted miniature cakes, each resembling the full moon and showcasing traditional Asian flavors.

**Optimal Freshness:** Six weeks

**Dimensions:** 3.7" x 4.8" x 11.2"

**SKU:** 393608

**Price:** \$75.00

\$75<sup>00</sup>



## All Natural Flavors:

(Branded Moon Cake designs)



PINEAPPLE (2X)



CLASSIC LOTUS SEED (2X)



# SEASONAL COLLECTIONS: HALLOWEEN & THANKSGIVING

\$38<sup>00</sup>



Celebrate no tricks, just treats this Halloween with MarieBelle New York's limited edition of Halloween chocolate ganache. Featuring a tempting array of ghouls and delights, this spooky collection features nine pieces of gourmet ganache, each hand-made from the finest ingredients and all-natural flavors.

## All Natural Flavors Include:

(Halloween designs)



APPLE PIE



PASSION FRUIT



DULCE DE LECHE



DARK CHOCOLATE



MILK CHOCOLATE



PUMPKIN

### 9pc Halloween Chocolate Ganache

**Optimal Freshness:** Six weeks

**Dimensions:** 4.1" x 4.1" x 1.5"

**SKU:** 394124

**Price:** \$38.00

Show your gratitude towards your loved ones with this limited-edition Thanksgiving collection. Sixteen signature MarieBelle New York chocolate ganaches are artfully arranged in an elegant box decorated with an elegant sleeve. Each ganache combines the finest single-origin chocolate with eclectic ingredients and artisanal techniques.

## All Natural Flavors Include:

(Thanksgiving designs)



PUMPKIN PIE



APPLE PIE



MILK CHOCOLATE

\$59<sup>00</sup>



### 16pc Thanksgiving Chocolate Ganache

**Optimal Freshness:** Six weeks

**Dimensions:** 5.75" x 5.7" x 1.5"

**SKU:** TS4001

**Price:** \$59.00





## MarieBelle New York Flagship

484 Broome Street, New York, NY

Step into our Flagship store, a hidden gem in Soho. Upon entering, you can't deny the enchanting ambience as you are surrounded by a selection of everything MarieBelle. You'll be tantalized by the beautiful displays of chocolate, tea, truffles, bars and sumptuous bites. The Soho team eagerly awaits your entry to offer tastings and assist with your purchases. Be sure to make a reservation at the Cacao Bar, our definition of a speakeasy (no knock necessary), and enjoy table service for pastries, hot chocolate and of course, our Afternoon Tea.

## Afternoon Tea Service

The Afternoon Tea experience at MarieBelle is a delightful journey into the world of elegant ambience and exquisite flavors. As you step into this charming setting, you're greeted by soothing melodies of classical music coupled with the enchanting aroma of freshly brewed tea. The table is adorned with an array of delectable pastries and dainty finger sandwiches. All are meticulously prepared to please both the eye and the palate. Available daily during boutique hours. For more information and a full menu please visit: [mariebelle.com/cacaobar.com](http://mariebelle.com/cacaobar.com).

## Kitano Hotel

66 Park Avenue, New York, NY

Ideally placed at the corner of Park Avenue and 38th St in the annex of Murray Hill, The Kitano Hotel offers a tranquil and relaxing oasis from the busy streets of the Big Apple. A destination in its own right, long known for its luxury, services, location, and, MarieBelle. Located in the hotel lobby, the comforting space is perfect as you decide on which chocolate indulgences you want to purchase for yourself or those worthy of the share.

## Events & Catering

Indulge in a world of exquisite flavors and opulent experiences at MarieBelle. Elevate your events and celebrate with a touch of elegance for an incredibly memorable time. Consider booking the Cacao Bar, perfect for weekday gatherings of 24 – 30 guests, or opt to book the entire store to host a cocktail-style event for 50 – 60 attendees. For further details and to plan your next unforgettable event, please inquire: [soho@mariebelle.com](mailto:soho@mariebelle.com)



# IMPORTANT DELIVERY INFORMATION

All of our selections are shipped from our Brooklyn NY factory, directly to the destination of your choice. Packed with care, our goal is to ensure your items arrive in pristine condition for your colleagues, VIP's and friends to enjoy.

Domestic and International shipping offered.

Every order is packaged accordingly with the destination and climate conditions in mind and, will include cold insulation when appropriate.

Orders are shipped Monday through Thursday to limit time in transit.

Upon request, we offer a variety of shipping options: Standard, Second Day, Priority and Saturday (depending on location and the time of year).

Bulk or drop shipping (to multiple addresses) is available. For multiple addresses we supply you with an easy to complete spreadsheet requesting name, address, phone and gift enclosure sentiment (if you'd like to add).

Our carriers of choice are FedEx and UPS.

To note: FedEx and UPS **DO NOT deliver to PO boxes**, an alternate address must be supplied.

Third party billing is offered via FedEx (by supplying us with your FedEx account number).

Delivery by messenger is available for Manhattan orders.

MarieBelle New York is not responsible for delivery delay caused by adverse or unpredictable weather conditions, nor responsible for delivery delay due to carrier circumstances.





# TERMS, CONDITIONS, & PAYMENTS

Terms of payment are within the sole discretion of MarieBelle New York and unless otherwise agreed upon by us in writing, payment must be received by us prior to our acceptance of an order. We accept most major credit cards for purchases.

For first time orders, lead time is generally two weeks from approval date but can be expediated if the party is willing to cover an additional rush cost.

There are minimums that must be met to place an order; pricing is based on set amount of products per case. Cases can not be broken, altered, or mix-and-matched with other items.

When paying, you represent and warrant that the credit card information you supply to us is true, correct, and complete. Charges incurred by you will be honored by your credit card company, including items at posted prices and any applicable taxes.

Purchase orders from businesses may be accepted upon credit approval and payable on terms set for your account or such other terms as we may approve or require. Charges for shipping and handling will be made in accordance with our current shipping policies.

MarieBelle New York does its best to ensure the quality of our products but unfortunately can not give you an absolute guarantee on transport quality. If for any reason you are not completely satisfied with our products, we request that you contact us at (833) 940-6170 or email us at [corporate@mariebelle.com](mailto:corporate@mariebelle.com) no later than 24hrs after delivery for replacement or exchange.



## FEATURED PRESS

**FOOD & BEVERAGE**  
MAGAZINE

**The New York Times**

**Forbes**



 **NBC NEWS**

**HUFFPOST**

**DAILY NEWS**

**OBSERVER**

**CNN**



## CONTACT INFORMATION

Our Corporate Sales Team looks forward to assisting with your gifting needs.



**CALL:**  
(833) 940-6170



**EMAIL:**  
[corporate@mariebelle.com](mailto:corporate@mariebelle.com)



**VISIT :**  
484 Broome Street  
New York, NY 10013





[corporate@mariebelle.com](mailto:corporate@mariebelle.com)

[www.mariebelle.com](http://www.mariebelle.com)

MARIEBELLE SOHO 484 Broome Street, New York NY 10013 • MARIEBELLE KITANO HOTEL 66 Park Avenue, New York NY