



# Operation SAFE

Oakley, HS  
June 18, 2012

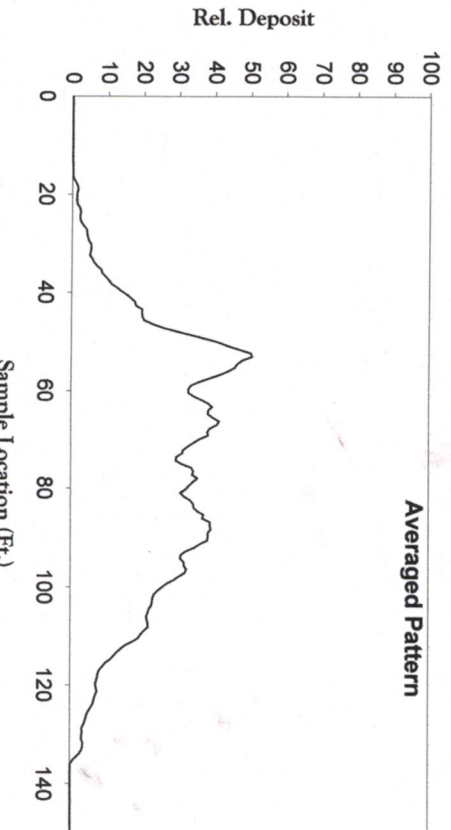
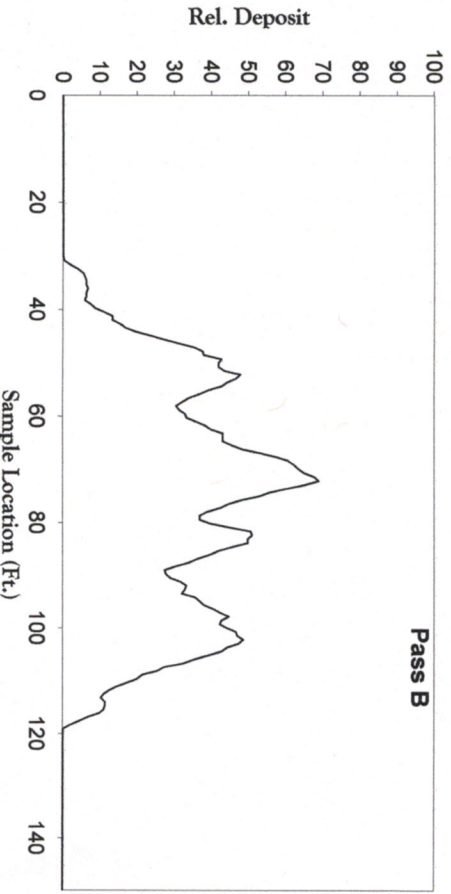
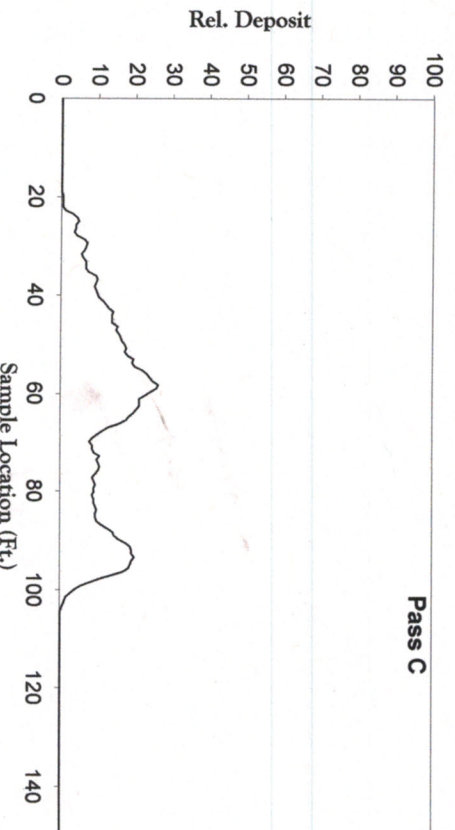
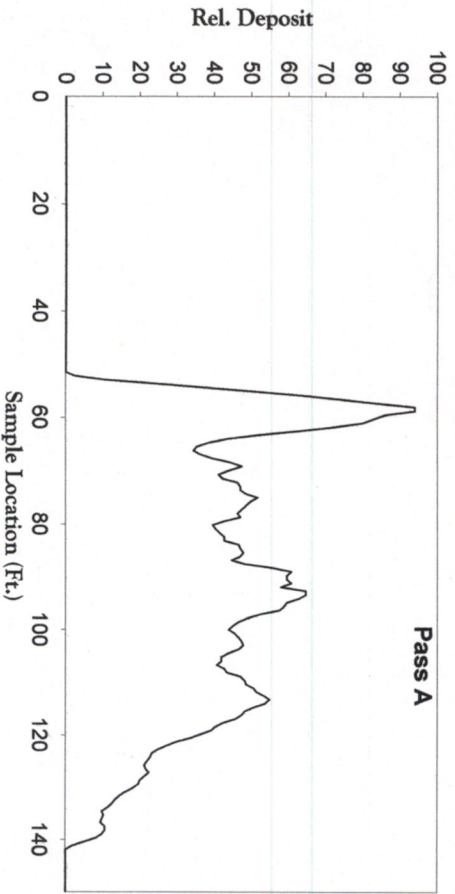
Frontier  
Bow Casper  
Oakley, KS

### Aircraft Data

Reg. Nbr.: N4223F  
 Nozzle I: 38 Spray Target# 8 at 0°  
 Pressure: 38 PSI  
 Target Swath: 60.0 Ft.  
 Series: 1  
 Make/Model: AT 402  
 Active Nozzles: 38  
 Target Rate: 2.0 GPA  
 Composite spray-quality data unavailable  
 (Dr. I.W. Kirk spray-nozzle models, USDA/ARS College Station, TX) [\* = Data outside mode led range]

### Flight-Line Data

	Pass-A	Pass-B	Pass-C	Avg
Aircraft Speed: (MPH)	145	145	145	145
Aircraft Height: (Ft.)	8.0	8.0	8.0	8.0
Wind Velocity: (MPH)	6.0	7.0	6.0	6.3
Cross-wind: (MPH)	1.0	0.0	-2.1	-0.4
Ambient Temp: (F)	92	92	92	92
Relative Hum: (%)	41	41	41	41





# Operation SAFE

Oakley, HS  
June 18, 2012

Frontier  
Bow Casper  
Oakley, KS

### Aircraft Data

Reg. Nbr.: N4223F  
 Nozzle I: 38 Spray Target# 8 at 0°  
 Pressure: 38 PSI  
 Target Swath: 60.0 Ft.

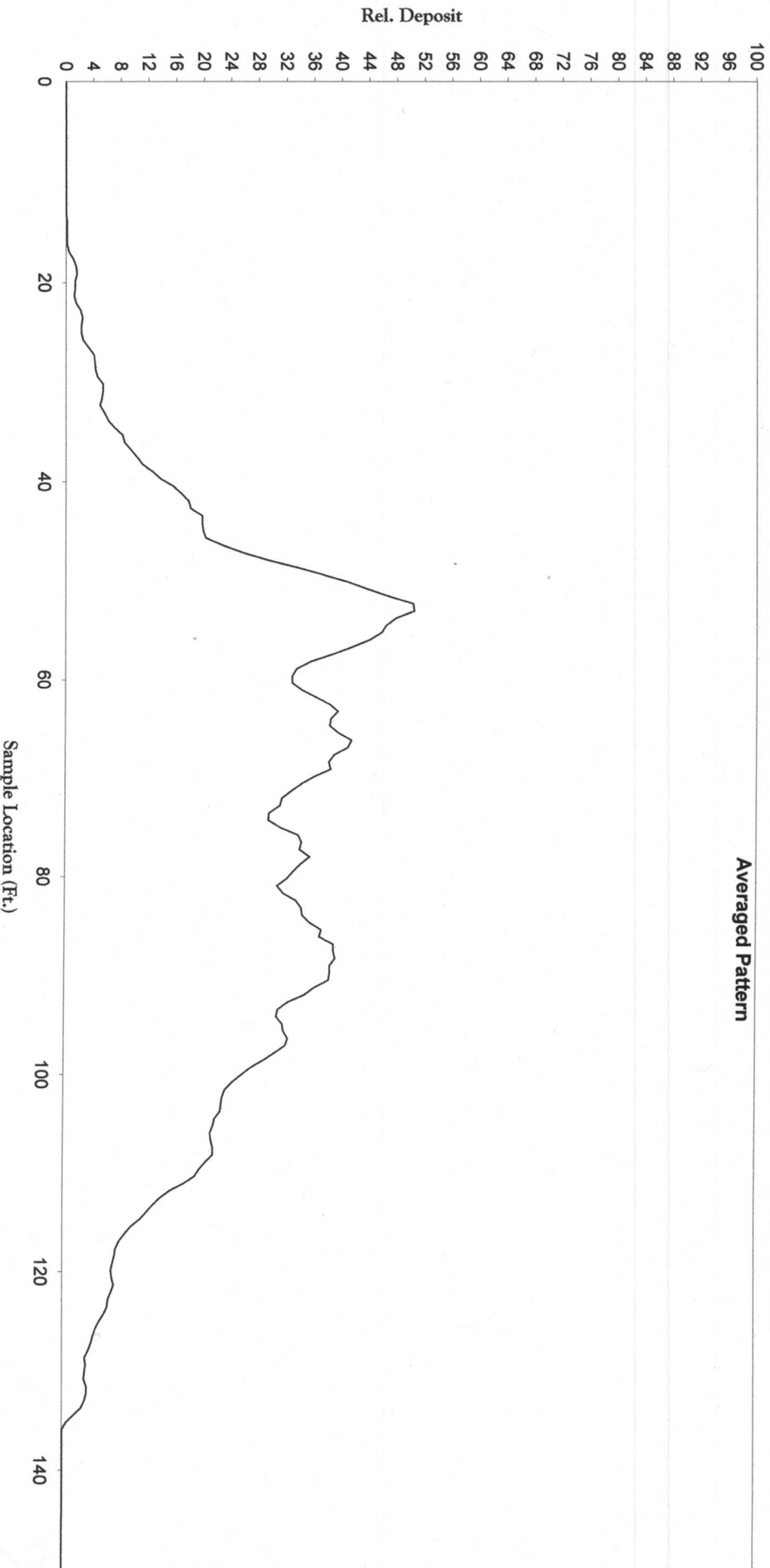
Series: 1  
 Make/Model: AT 402  
 Active Nozzles: 38  
 Target Rate: 2.0 GPA

(Dr. I.W. Kirk spray-nozzle models, USDA/ARS College Station, TX) [\* = Data outside mode led range]  
 Composite spray-quality data unavailable

### Flight-Line Data

	Pass-A	Pass-B	Pass-C	Avg
Aircraft Speed: (MPH)	145	145	145	145
Aircraft Height: (Ft.)	8.0	8.0	8.0	8.0
Wind Velocity: (MPH)	6.0	7.0	6.0	6.3
Cross-wind: (MPH)	1.0	0.0	-2.1	-0.4
Ambient Temp: (F)	92	92	92	92
Relative Hum: (%)	41	41	41	41

### Averaged Pattern







# Operation SAFE

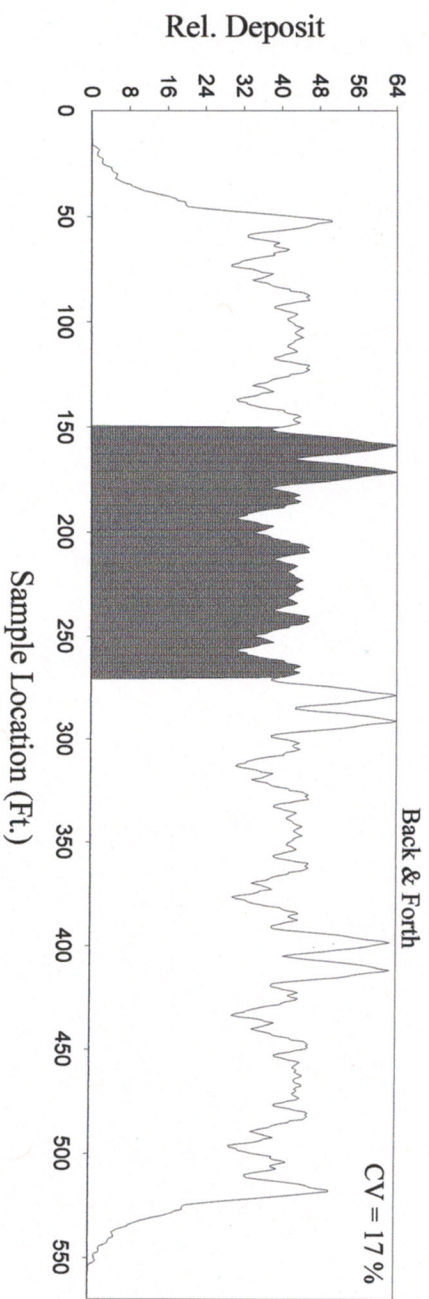
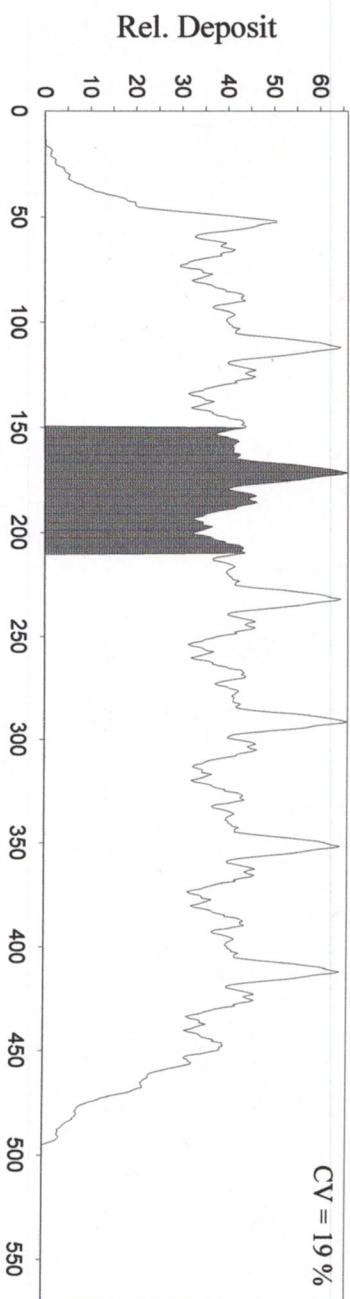
Oakley, HS  
June 18, 2012

Frontier  
Oakley, KS

### Flight-Line Data

Reg. Nbr.:	N4223F	Series:	1	Aircraft Speed: (MPH)	Pass-A	Pass-B	Pass-C	Avg
Nozzle I:	38\Spray Target# 8 at 0°	Nbr. Noz.:	38	Aircraft Height: (Ft.)	145	145	145	145
Pressure:	38 PSI	Trg. Rate:	2.0 GPA	Wind Velocity: (MPH)	8.0	8.0	8.0	8.0
Trg. Swath:	60.0 Ft.	Est. Rate:	3 GPA	Cross-wind: (MPH)	6.0	7.0	6.0	6.3
		Swath:	60 Ft.	Ambient Temp: (F)	1.0	0.0	-2.1	-0.4
				Humidity: (%)	92	92	92	92
					41	41	41	41

Note 1: "Estimated Rate" is a computed value based on 38 active nozzles (Spray Target) operating at 38 PSI on a swath interval of 60 Ft. and aircraft ground-speed of 145 MPH.  
 Allowance has been made for an assumed 10% reduction in boom pressure due to fitting and pipe friction losses.  
 Note 2: "CV" estimates the degree of uniformity of deposition across the field (0 = best, 100 = worst, <25 = normally acceptable).  
 Note 3: Shaded areas represent the repeating portion of the overlapped swath deposition across the field. CV is computed from this overlapped section.  
 Note 4: Spray data based on Dr. I.W. Kirk spray-nozzle models, USDARS, College Station, TX. [\* = Data outside modeled range]  
 (Airspeed corrected for headwind, Ground speed + Headwind)



Spray-quality data are unavailable

Swath (Ft)	Rate (GPA)	RT CV	B&F CV
50	3.60	19%	23%
51	3.53	19%	22%
52	3.46	19%	21%
53	3.39	19%	20%
54	3.33	19%	19%
55	3.27	19%	19%
56	3.21	20%	19%
57	3.16	20%	19%
58	3.10	19%	18%
59	3.05	19%	18%
60	3.00	19%	17%
61	2.95	18%	16%
62	2.90	17%	15%
63	2.86	17%	16%
64	2.81	17%	15%
65	2.77	17%	15%
66	2.73	17%	15%
67	2.69	17%	15%
68	2.65	17%	15%
69	2.61	18%	16%
70	2.57	18%	16%
71	2.53	18%	16%