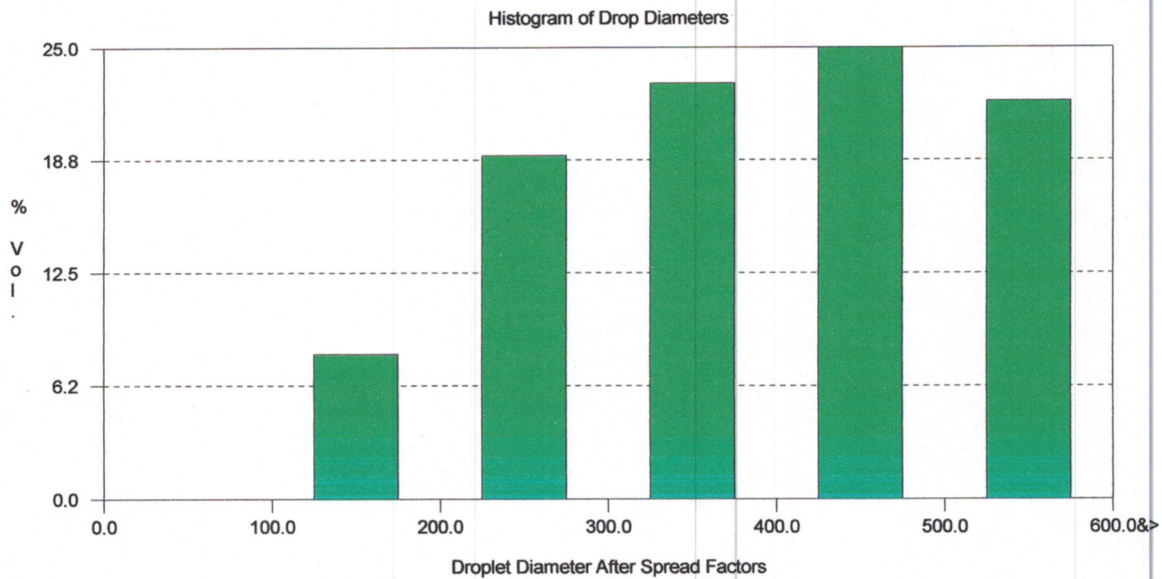
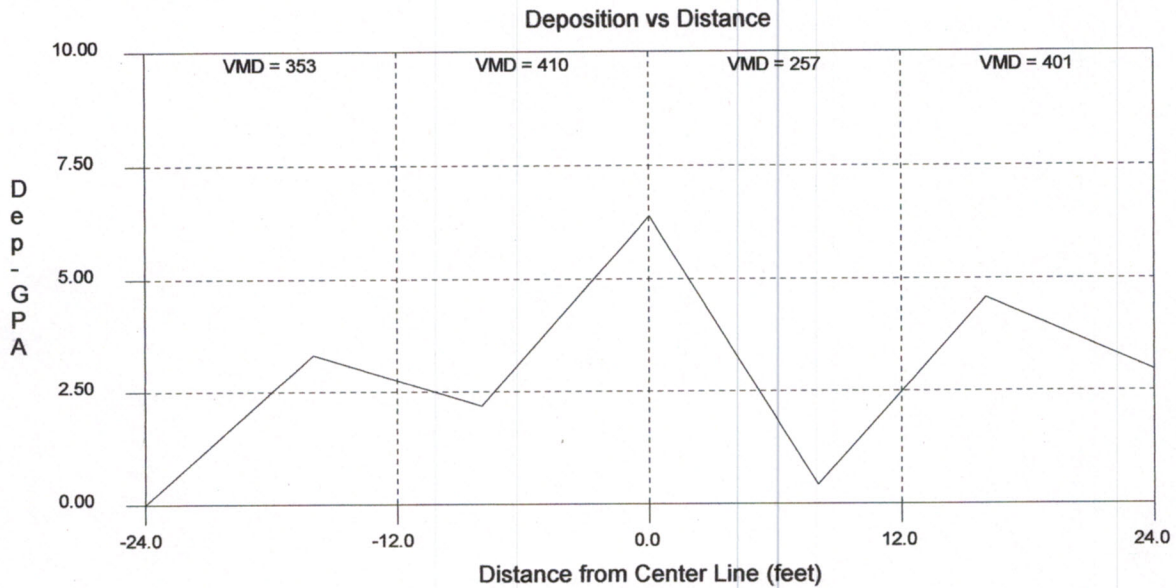
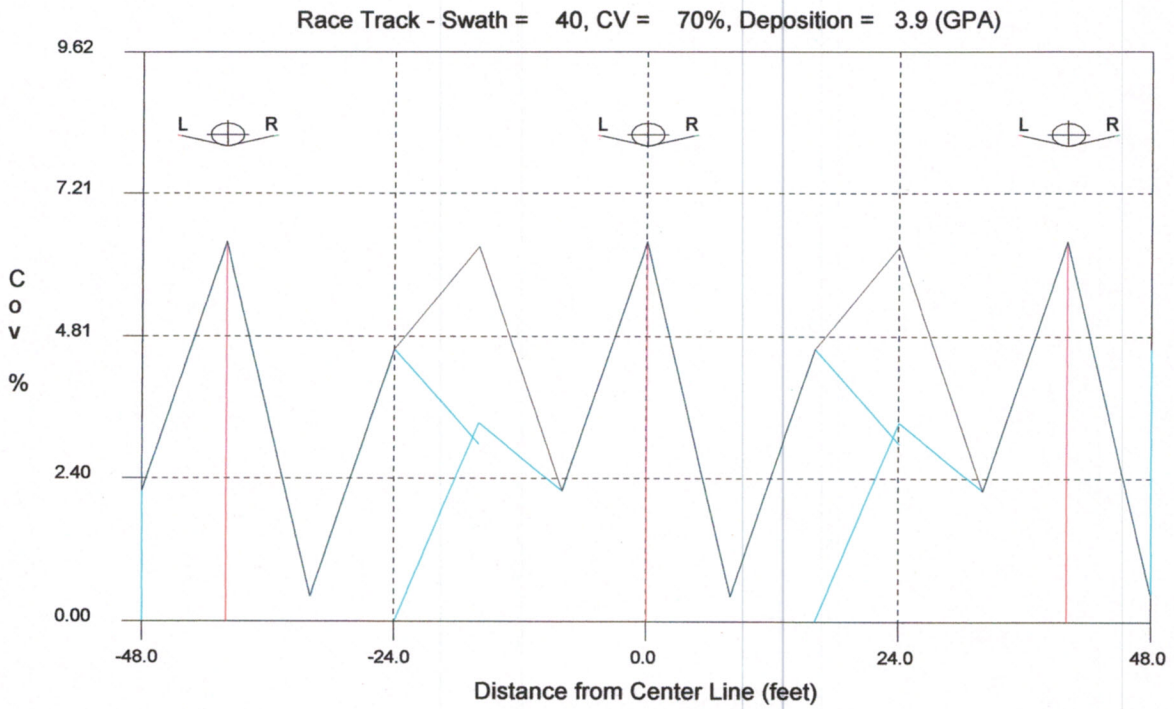
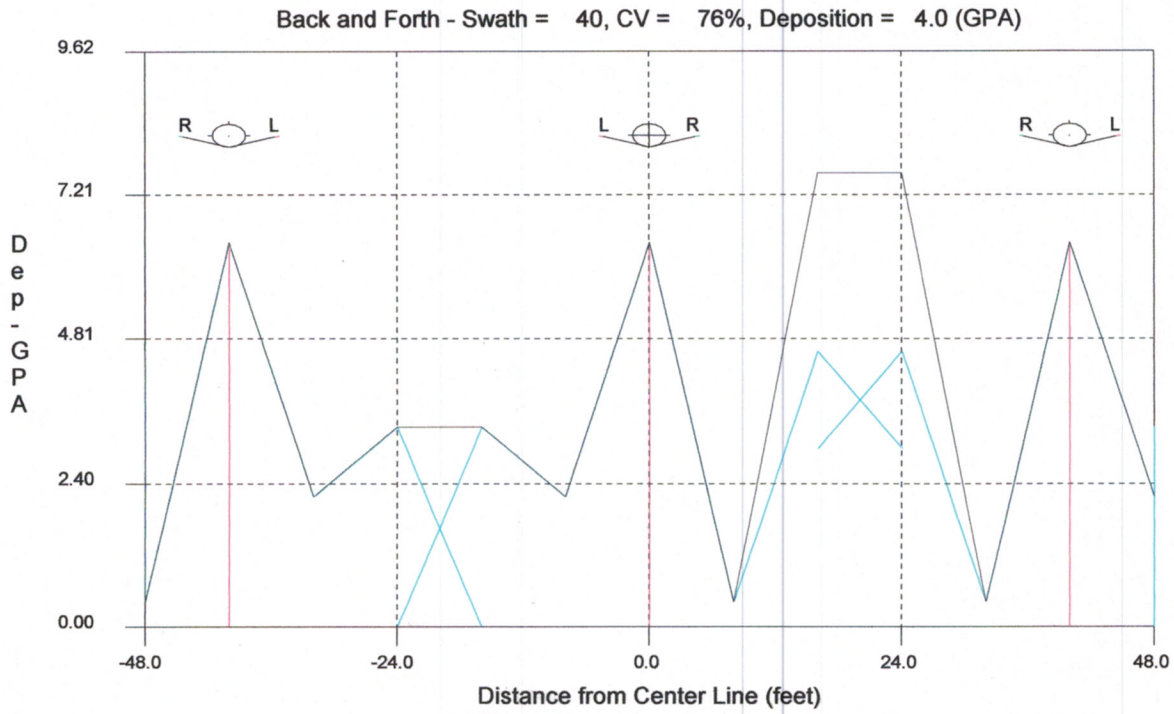


Safe Fly-In
 June 7/18, 2012
 Oakley, KS

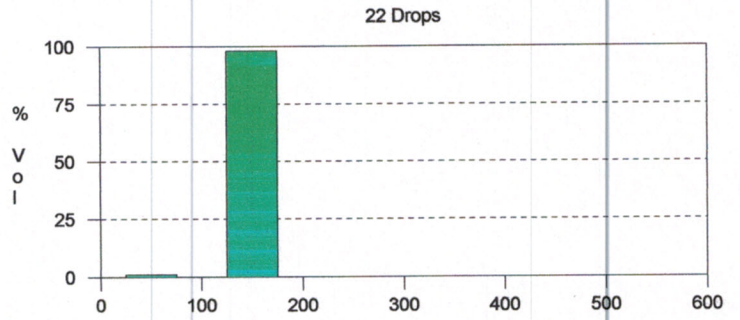
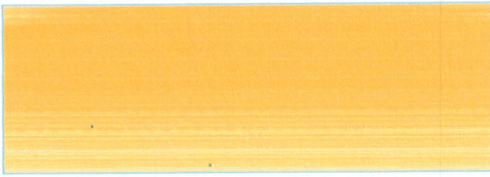
Spread Factors Equation
 $SF = 1.6333 + 0.0009 * D + 0.0000 * D * D$
 Effective Swath = 40.0 ft Non-Uniform
 VMD = 396
 VD(0.1) = 207

VD(0.9) = 570
 GPA @ 32 (ft) = 2.849
 Wind Velocity (MPH): 6
 Wind Direction(deg.): 200
 Cross Wind (MPH): 2
 Temperature (F): 92
 Humidity (%): 44

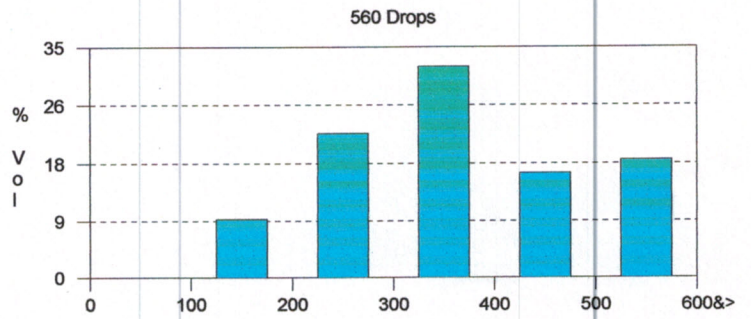
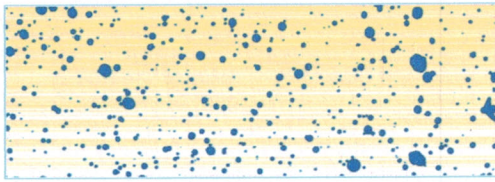




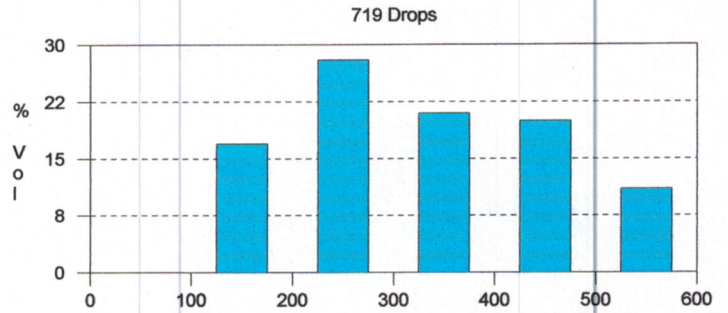
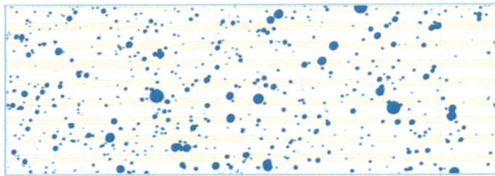
-24.0 with 0.002 GPA & VMD = 151



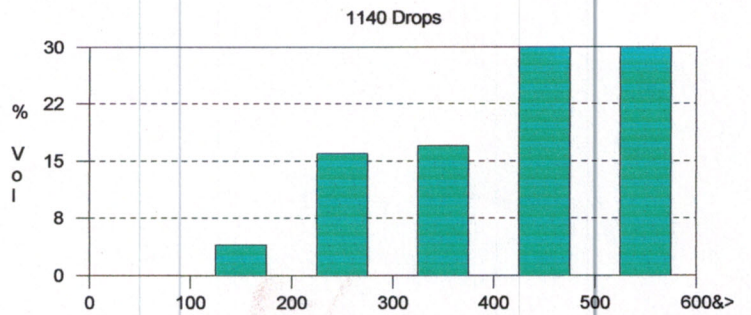
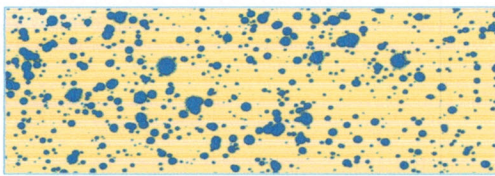
-16.0 with 3.340 GPA & VMD = 354



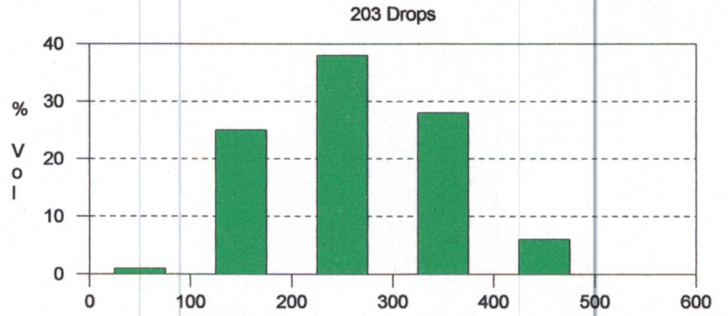
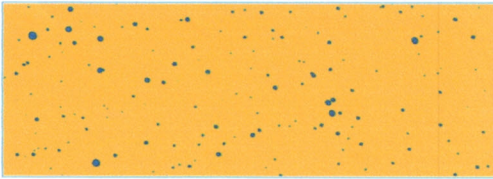
-8.0 with 2.195 GPA & VMD = 316



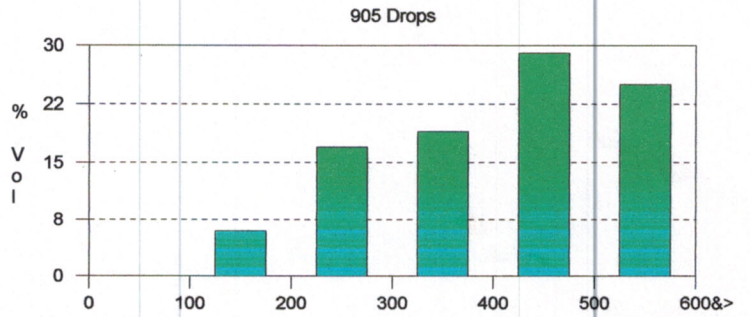
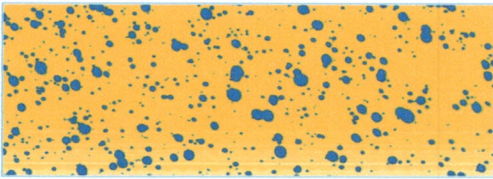
0.0 with 6.412 GPA & VMD = 427



8.0 with 0.423 GPA & VMD = 258



16.0 with 4.590 GPA & VMD = 424



24.0 with 2.984 GPA & VMD = 383

