



WETSUITS

SS21 | FW21

v4. 20 OCT 2020

DAKINE

EST.79

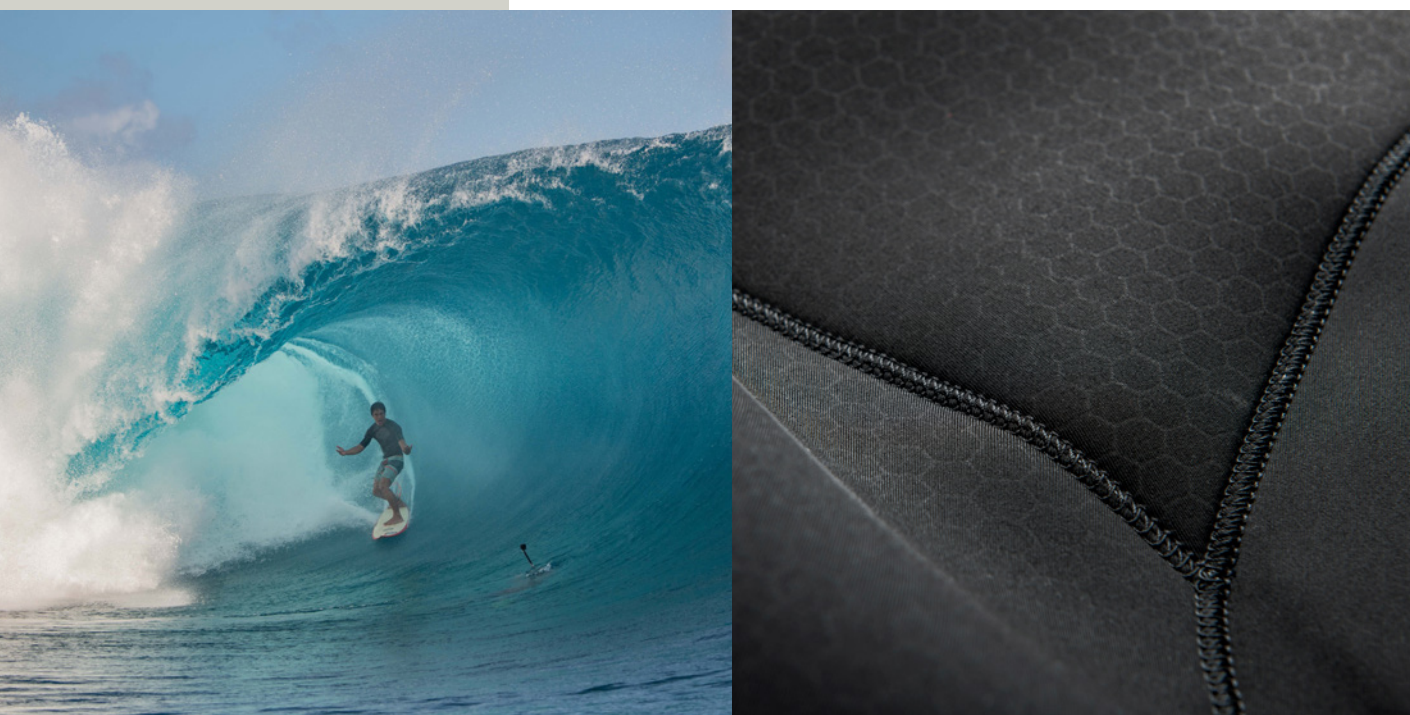
RESPECT THE LAND THE SEA THE LOCALS

PURE FUNCTION, FULL COMMITMENT

When building Dakine product, our first priority is durability. The market's current wetsuit designs focus on performance and warmth at a cost to durability.

We need to re-calibrate the balance.

We've designed a range that matches or exceeds all standards of performance and warmth but sets a new standard for durability.



NO UNNECESSARY HARM

Alongside better value and product experience for the customer, Durability creates a long product lifespan, reducing the overall environmental impact.

To further minimise our impact we have built in a number of eco driven factors in our material choice and design, featured in every Dakine wetsuits product:

- Reduced PAHs - Polycyclic Aromatic Hydrocarbons produced in the creation of neoprene.
- Limestone neoprene - derived from non petrochemicals with a reduced CO2 output of 24%.
- Carbon Black® neoprene. Cuts CO2 emissions by 200g per wetsuit
- AquaA® solvent free lamination eliminates 600g of harmful VOC's [Volatile Organic Compounds] per wetsuit.
- Dope Dyed yarn - saves 104L of water and 26% reduced Carbon Footprint per kg of Fabric
- Manufactured at Sheico Thailand - a Fair trade certified factory equipped with solar energy system.

WETSUIT RANGE

CYCLONE



MENS CYCLONE ZIP FREE HOODED
 MENS CYCLONE ZIP FREE
 MENS CYCLONE ZIP FREE SHORT SLEEVE
 MENS CYCLONE ZIP FREE LS SHORTY
 MENS CYCLONE ZIP FREE SHORTY
 MENS CYCLONE JACKET



WOMENS ZIP FREE HOODED
 WOMENS CYCLONE ZIP FREE
 WOMENS CYCLONE ZIP FREE SHORT SLEEVE
 WOMENS CYCLONE BACK ZIP LS SPRING
 WOMENS MISSION BACK ZIP SPRING
 WOMENS MISSION FRONT ZIP JACKET

MISSION

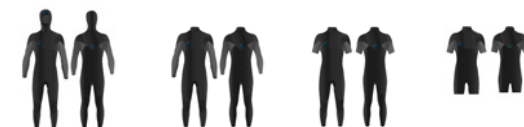


MENS MISSION CHEST ZIP HOODED
 MENS MISSION CHEST ZIP
 MENS MISSION ZIP FREE
 MENS MISSION ZIP FREE SHORT SLEEVE
 MENS MISSION ZIP FREE LS SHORTY
 MENS MISSION ZIP FREE SHORTY
 MENS MISSION JACKET



WOMENS MISSION CHEST ZIP HOODED
 WOMENS MISSION CHEST ZIP
 WOMENS MISSION ZIP FREE
 WOMENS MISSION ZIP FREE SHORT SLEEVE
 WOMENS MISSION ZIP FREE SHORTY
 WOMENS MISSION BACK ZIP LS SPRING
 WOMENS MISSION FRONT ZIP JACKET

QUANTUM



MENS QUANTUM CHEST ZIP HOODED
 MENS QUANTUM CHEST ZIP
 MENS QUANTUM CHEST ZIP SHORT SLEEVE
 MENS QUANTUM CHEST ZIP SHORTY



WOMENS QUANTUM CHEST ZIP HOODED
 WOMENS QUANTUM CHEST ZIP
 WOMENS QUANTUM CHEST ZIP SHORT SLEEVE
 WOMENS QUANTUM CHEST ZIP SHORTY

RTA / RTS



MENS RTA BACK ZIP
 MENS RTS BACK ZIP
 WOMENS RTA BACK ZIP
 WOMENS RTS BACK ZIP

ACCESSORIES



CYCLONE HOOD
 CYCLONE HOODED VEST
 CYCLONE GLOVES
 CYCLONE ROUND TOE BOOT
 CYCLONE SPLIT TOE BOOT
 RT BOOT
 REEF SHOE
 FOLDING REEF SHOE



STORM SNUG FIT VEST W.HOOD

EXTRAS



Hangtags and Trim:

Our hangtags are made from recycled kraft card and printed with soy based inks, attached to the wetsuit at the pull cord using a re-usable leash string to avoid the use of any unnecessary plastic.

Inside is information on the model, features and neoprene thicknesses.

Hangtag measures 2.5" x 4" // 60mm x 100mm

All suits are wrapped in a recycled polybag.



Neoprene Swatch Book

At the core of our wetsuits is our materials - 3 grades of DK_Prene, unique thermal linings and stretch fabrics. The Dakine swatch book contains an example of each foam, fabric and thickness, bound in recycled kraft card.

Made using the off cuts from our production, these save waste and make excellent, tactile sales tools on the retail floor.

Size is 4" x 6" // 100mm x 150mm.
 Limited numbers are available.

CYCLONE SERIES

Next level performance, next level durability.



The Cyclone takes our disruptive design concept to the next level.

Our brief was clear – the best performing wetsuit for fit, feel, warmth and stretch to match or exceed the best in the market, but incorporating a level of durability to challenge the expected lifespan of high end wetsuits.

The Cyclone is the pinnacle of our wetsuit program’s development.



MISSION SERIES

No compromise



The Mission is our vision for re-balancing wetsuit design.

We built this suit from the ground up with flexibility, warmth and durability as equal factors.

The Mission sets a new benchmark for wetsuits; unreal stretch, fit and comfort, outstanding warmth and drying times and unmatched durability.



QUANTUM SERIES

Game changing approach



The Quantum embodies our game changing approach to wetsuits.

This is not entry level, budget or cheap; the build quality matches our standards set throughout the range.

The Quantum will change your expectation of a what an affordable wetsuit can be.



WETSUIT TECH



APEX FIT PATTERN

Fit is the most important factor of a wetsuit. The most feature hyped wetsuit won't work if it doesn't fit well.

The pattern is an extremely complex science, the most overlooked yet most integral to warmth, flex and comfort.

Warmth is a product of 2 things; fit and materials. Wetsuits work because neoprene is a layer of insulation (not by allowing a layer of water against your skin which heats up, as widely believed). The closer the fit of the insulation the better. The thicker and more thermal properties of the insulation the better.

Flex is the flip side of warmth – a product of the thinness of material and stretch properties, achieved by the strategic position of panels and seams to achieve a pre-formed structure, paddle zones and unhindered stretch areas.

We also have a third criteria for our Apex fit pattern – durability. While respecting all factors of warmth and flex, we considered seam placement with respect of high abrasion areas, stress points and creating a pattern that will fit the widest range of body shapes to avoid neoprene fatigue.

MATERIALS:

INTERNAL LININGS

Hexo_Therm - specially developed for us by our fabric experts; a lightweight, stretch woven thermal base with an integrated high loft layer to create additional air trapping and quick drying properties. Used only in core areas for absolute warmth.

Thermo - lightweight, stretch woven, high pile fabric for maximum warmth and stretch. This has the same extreme stretch of FLX external lining with the added high pile insulative effect, used internally for warmth.

NPM - high flex with very high surface resistance NPM balances stretch with high durability. A high elastic rebound eliminates over-stretch fatigue.

NEOPRENE FOAM

We use 3 high grade limestone based neoprenes, with properties to suit each application:

DK_Lite - next level flexibility and exceptionally low weight. Only produced in very low quantities due to the complexity of stabilising a lightweight foam. Used exclusively in our Cyclone products.

S type - is a key benchmark in achieving a durable high performance wetsuit – a limestone neoprene that performs at or above industry flex ratings and exceeds fatigue and compression ratings.

D foam - is a high modulus foam with excellent integral strength. Extremely resilient to delamination and compression we use this in high wear areas such as kneepads. The high elastic limit is also put to use in cuffs and ankles to keep seals tighter for longer.

All foam is limestone based, reduced PAH, Carbon Black neoprene which cuts CO2 emissions by 200g per wetsuit.

EXTERNAL LININGS

Hex - Exclusive to Dakine and only used in panels featuring our unique Hexo_Therm interior lining. Hex is stretch woven for almost limitless flex, dope dyed then embossed with our custom hex pattern.

FLX - stretch woven for extreme flex, using a reinforced elastane thread to create new levels of durability in superstretch linings.

NPM - high flex with very high surface resistance NPM balances stretch with high durability. A high elastic rebound eliminates over-stretch fatigue.

RESIST our highest rated lining for durability. We use a 200D nylon for super abrasion resistance woven with an elastic yarn to retain some flexibility and conformity. Used only in the very high wear areas and backed with D foam high modulus neoprene.

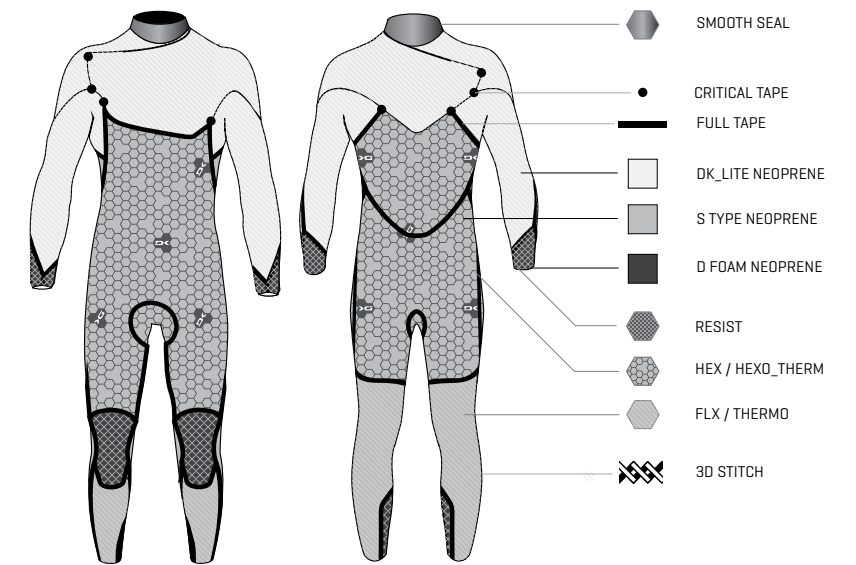
Dope dyed fabrics saves 104 liters of water per kg of fabric and 26% reduced carbon footprint. Solvent free lamination eliminates 600 grams of harmful VOC's per wetsuit.

CONSTRUCTION:

For each model the use of foam, lining and seam construction is adjusted to suit the performance, warmth or price - more DK_Lite neoprene for extreme stretch and lightest weight or more D foam for strength.

Regardless of price, all models use D foam high modulus neoprene and abrasion resistant linings in high wear areas. All seams are twice glued and at least twice reinforced with a combination of 3D stitch, liquid seal and tape, with the exception of the fused jacket and flatlocked spring suit.

This diagram at the start of each model section shows the layout of foam, linings and seams for each model.



FEATURES:



CURV LOCK

The Cyclone wetsuits feature an industry first innovation in the shoulder seal to reinforce, secure and lock down the entry panel and ensure the most water tight seal. A unique, flush free zipperless seal system.



ZIP FREE AND CHEST ZIP

Zip free is the natural progression of chest entry wetsuits, with more freedom of movement across the chest and fewer components to fail. For those not yet converted to Zip Free we offer a chest zip variant in Mission and Quantum.



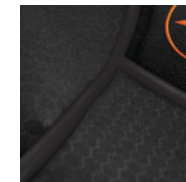
SMOOTH SEAL

On Cyclone neck, arm and leg seals we use a smooth skin neoprene coating to make a tighter seal.



COMPRESSION CUT SEALS

The finished raw cuff is cut with clamp and black creating a super accurate low profile anti-flush, anti-fray finish.



SEALED SEAMS

On Cyclone models we used a fused seam, sealed with a silicon compound and taped inside.



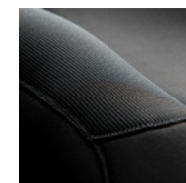
TAPED AND CRITICALLY TAPED SEAMS

Neoprene tape applied to the inside seams and seam junctions. Used in critical tape for strength or full seam tape for absolute seal.



3D STITCH

A stitching system for zero water penetration and maximum strength. On 5mm wetsuits we use a double thread system inside and out.



RESIST PANELS

Tactically placed abrasion resistant panels in areas of high wear or high material fatigue.

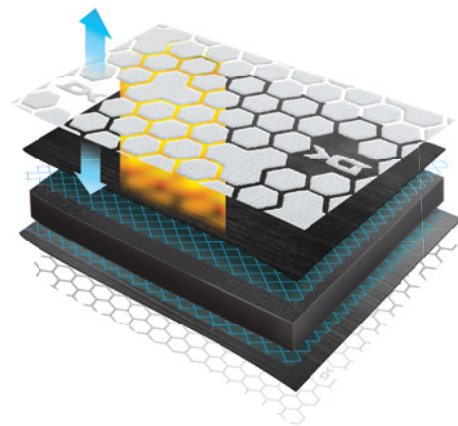
CYCLONE SERIES

The Cyclone takes our disruptive design approach to the next level.

Our brief was clear – the best performing wetsuit for fit, feel, warmth and stretch, to match or exceed the best in the market, and incorporating a level of durability to challenge the expected lifespan of most high end wetsuits.

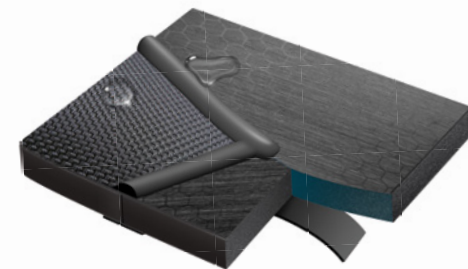
From creating an all new wetsuit pattern; our Apex Fit – engineered for extreme freedom of movement, tailored fit and no stress points – to developing our own thermal linings and industry first innovation, the Cyclone was our skunkworks of ideas.

Featuring all of our best materials for optimum performance: DK_Lite limestone based neoprene, Hexo_Therm lining and Triple lock seams. With innovation including industry first Curv Lock and details as Hex embossed stretch woven lining and anti-fray cuffs, low impact processes like Dope Dyed yarn and solvent free lamination, the Cyclone is the pinnacle of our wetsuit program's development.

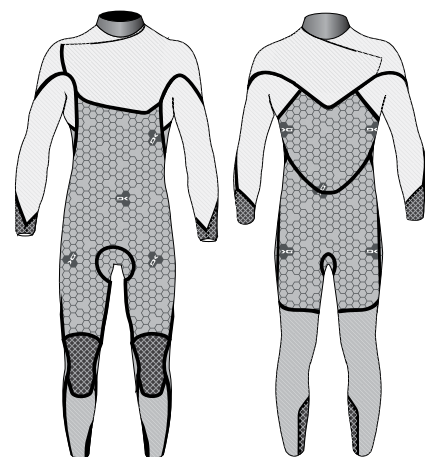


With 20% DK_Lite neoprene these are super light with next level stretch. Full suits are fully lined in the core with Hexo_Therm for warmth.

The Cyclone features our unique Curv lock feature, combined with a smooth seal neck plus cuffs and ankles reinforced with Resist panels for a water tight seal.



Seam construction is designed for minimal weight and maximum flex: Double glued with no stitching, sealed and reinforced with external sealed seam and internal tape throughout.



LIGHTWEIGHT, HIGH PERFORMANCE, FULL FEATURED FLAGSHIP MODEL WITH BUILT-IN DURABILITY

- THERMAL LINED CORE IN FULL SUITS
- FULLY TAPED AND SEALED SEAMS
- DK_LITE NEOPRENE THROUGHOUT SHOULDERS AND ARMS



MENS

CYCLONE ZIP FREE FULL SUIT

- 5/4mm
- 4/3mm
- 3/2mm
- 2/2mm

Featuring all high end materials and construction for surfers looking for extreme performance in flexibility and warmth.

The full suit is a performance focussed zip free design. Available in all thicknesses from 2/2 warm water through to 5/4mm true thickness cold water wetsuit. The Hexo_Therm lined core and fully sealed seams make these feel warmer than some thicker suits meaning you can go thinner to feel even freer.

- Zip free with Curv Lock
- Hexo_Therm core
- Smooth seal neck

BLACK

XS, S, TS, MS, M, MT, LS, L, LT, XLS, XL, XLT, XXL, XXLS
80% Neoprene, 15% Nylon, 5% Polyester

MENS

CYCLONE ZIP FREE HOODED

- 5/4mm
- 4/3mm

- Zip free with Curv Lock
- Built in hood with peak, adjustable seal and soft chin guard
- Hexo_Therm line core
- FLX_THERMO lining in all other panels
- DK_Lite Neoprene in shoulder and arm
- True thickness throughout
- Sealed and taped seams
- Resist cuff, ankle and oversize knee panels
- Compression cut seals
- Silicon logo detailing
- Apex fit

BLACK

XS, S, TS, MS, M, MT, LS, L, LT, XLS, XL, XLT, XXL, XXLS
80% Neoprene, 15% Nylon, 5% Polyester



CYCLONE LONG SLEEVED SHORTY

- 2/2mm

- Zip free with Curv Lock
- FLX_THERMO lining
- DK_Lite Neoprene in shoulder and arm
- Smooth skin seals on the neck and legs
- Apex fit

BLACK, GREY

XS, S, TS, MS, M, MT, LS, L, LT, XLS, XL, XLT, XXL, XXLS
80% Neoprene, 15% Nylon, 5% Polyester



CYCLONE SHORTY

- 2/2mm

- Zip free with Curv Lock
- FLX_THERMO lining
- DK_Lite Neoprene in shoulder and arm
- Smooth skin seals on the neck, arms and legs
- Apex fit

BLACK, GREY

XS, S, TS, MS, M, MT, LS, L, LT, XLS, XL, XLT, XXL, XXLS
80% Neoprene, 15% Nylon, 5% Polyester

CYCLONE SHORT SLEEVED

- 2/2mm

- Zip free with Curv Lock
- FLX_THERMO lining
- DK_Lite Neoprene in shoulder and arm
- True thickness throughout
- Sealed and taped seams
- Resist ankle and oversize knee panels
- Compression cut seals
- Smooth skin seals at the neck and arms
- Silicon logo detailing
- Apex fit

BLACK, GREY

XS, S, TS, MS, M, MT, LS, L, LT, XLS, XL, XXL, XXLS
80% Neoprene, 15% Nylon, 5% Polyester



CYCLONE JACKET

- 1mm

- DK_Lite Neoprene in all panels
- Close fit
- Reduces wind chill, protects from UV
- Drawcord at waist and board short loop
- Pocket at back for sunscreen, energy bar or folding Reef Shoe

BLACK, GREY

XS, S, M, L, XL, XXL
80% Neoprene, 15% Nylon, 5% Polyester



WOMENS

CYCLONE ZIP FREE HOODED

- 5/4mm
- 4/3mm

- Zip free with Curv Lock
- Built in hood with peak, adjustable seal and soft chin guard
- Hexo_Therm lined core
- FLX_THERMO lining in all other panels
- DK_Lite Neoprene in shoulder and arm
- True thickness throughout
- Sealed and taped seams
- Resist cuff, ankle and oversize knee panels
- Compression cut seals
- Silicon logo detailing
- Apex fit

BLACK

US - 2, T2, 4, T4, 6, T6, 8, 10, 12
80% Neoprene, 15% Nylon, 5% Polyester



CYCLONE ZIP FREE FULL SUIT

- 5/4mm
- 4/3mm
- 3/2mm
- 2/2mm

- Zip free with Curv Lock
- Hexo_Therm lined core
- FLX_THERMO lining in all other panels
- DK_Lite Neoprene in shoulder and arm
- True thickness throughout
- Sealed and taped seams
- Resist cuff, ankle and oversize knee panels
- Compression cut seals
- Silicon logo detailing
- Apex fit

BLACK

US - 2, T2, 4, T4, 6, T6, 8, 10, 12
80% Neoprene, 15% Nylon, 5% Polyester



CYCLONE SHORT SLEEVED

- 2/2mm

- Zip free with Curv Lock
- FLX_THERMO lining
- DK_Lite Neoprene in shoulder and arm
- Resist ankle and oversize knee panels
- Smooth skin seals at the neck and arms
- Apex fit

BLACK, ORCHID

US - 2, T2, 4, T4, 6, T6, 8, 10, 12
80% Neoprene, 15% Nylon, 5% Polyester



ORCHID

SUBLIMATION DETAIL



CYCLONE SPRING SUIT

- 2mm

- DK_Lite Neoprene in all panels
- FLX_THERMO lining in all panels
- 3D stitched and critically taped seams
- Mini YKK zip at back
- Adjustable soft feel collar

BLACK, ORCHID

US - 2, 4, 6, 8, 10, 12
80% Neoprene, 15% Nylon, 5% Polyester



CYCLONE LONG SLEEVED SPRING

- 2mm

- DK_Lite Neoprene in all panels
- FLX_THERMO lining in all panels
- 3D stitched and critically taped seams
- Key pocket on sleeve
- Mini YKK zip at back
- Adjustable soft feel collar

BLACK, ORCHID

US - 2, 4, 6, 8, 10, 12
80% Neoprene, 15% Nylon, 5% Polyester



CYCLONE JACKET

- 2mm

- Close fit
- DK_Lite Neoprene in all panels
- FLX_THERMO lining in all panels
- Key pocket on sleeve
- Front YKK zip

BLACK, ORCHID

US - 2, 4, 6, 8, 10, 12
80% Neoprene, 15% Nylon, 5% Polyester

MENS

MISSION CHEST ZIP HOODED

- 5/4/3mm
- 4/3mm

- 'Easy in' Chest Zip with YKK zip
- Built in hood with peak, adjustable seal and soft chin guard
- Hexo_Therm lined core
- FLX_THERMO lining in all other panels
- Taped core and critically taped seam junctions
- True thickness throughout
- 3D stitch
- Resist cuff, ankle and oversize knee panels
- S type Neoprene in all stretch panels
- D foam Neoprene in high wear areas
- Compression cut cuffs
- Apex fit
- Silicon logo detailing

BLACK

XS, S, TS, MS, M, MT, LS, L, LT, XLS, XL, XLT, XXL, XXLS
80% Neoprene, 15% Nylon, 5% Polyester



MISSION SHORT SLEEVED

- 2/2mm

- Zip Free
- FLX_THERMO lining
- Critically taped seam junctions
- Resist ankle and oversize knees panels
- Compression cut neck and arm seals

BLACK, BLUE

XS, S, TS, MS, M, MT, LS, L, LT, XLS, XL, XLT, XXL, XXLS
80% Neoprene, 15% Nylon, 5% Polyester



MISSION LONG SLEEVED SHORTY

- 2/2mm

- Zip Free
- FLX_THERMO lining
- Critically taped seam junctions
- Resist ankle and oversize knee panels
- Compression cut neck and wrist seals

BLACK, BLUE

XS, S, TS, MS, M, MT, LS, L, LT, XLS, XL, XLT, XXL, XXLS
80% Neoprene, 15% Nylon, 5% Polyester

MISSION ZIP FREE FULL SUIT

- 4/3mm
- 3/2mm
- 2/2mm

- Zip Free
- Hexo_Therm lined core
- FLX_THERMO lining in all other panels
- Partially taped and critically taped seam junctions
- True thickness throughout
- 3D stitch
- Resist cuff, ankle and oversize knee panels
- S type Neoprene in all stretch panels
- D foam Neoprene in high wear areas
- Compression cut cuffs
- Soft feel compression cut collar
- Apex fit
- Silicon logo detailing

BLACK

XS, S, TS, MS, M, MT, LS, L, LT, XLS, XL, XLT, XXL, XXLS
80% Neoprene, 15% Nylon, 5% Polyester



MISSION SHORTY

- 2/2mm

- Zip Free
- FLX_THERMO lining
- Critically taped seam junctions
- Compression cut neck and arm seals

BLACK, BLUE

XS, S, TS, MS, M, MT, LS, L, LT, XLS, XL, XLT, XXL, XXLS
80% Neoprene, 15% Nylon, 5% Polyester



MISSION JACKET

- 1mm

- Close fit
- FLX_THERMO lining
- Reduces wind chill, protects from UV
- Board short loop
- Pocket at back

BLACK, BLUE

XS, S, M, L, XL, XXL
80% Neoprene, 15% Nylon, 5% Polyester





WOMENS

MISSION CHEST ZIP HOODED

- 5/4/3mm
- 4/3mm

- 'Easy in' Chest Zip with YKK zip
- Built in hood with peak, adjustable seal and soft chin guard
- Hexo_Therm lined core
- FLX_THERMO lining in all other panels
- Taped core and critically taped seam junctions
- 3D stitch
- Resist cuff, ankle and oversize knee panels
- Compression cut cuffs
- Apex fit

BLACK

US - 2, T2, 4, T4, 6, T6, 8, 10, 12
80% Neoprene, 15% Nylon, 5% Polyester

**MISSION CHEST ZIP FULL SUIT**

- 5/4/3mm
- 4/3mm
- 3/2mm

- 'Easy in' Chest Zip with YKK zip
- Hexo_Therm lined core
- FLX_THERMO lining in all other panels
- Taped core and critically taped seam junctions
- 3D stitch
- Resist cuff, ankle and oversize knee panels
- Compression cut cuffs
- Apex fit

BLACK

US - 2, T2, 4, T4, 6, T6, 8, 10, 12
80% Neoprene, 15% Nylon, 5% Polyester

**MISSION ZIP FREE FULL SUIT**

- 4/3mm
- 3/2mm
- 2/2mm

- Zip Free design
- Hexo_Therm lined core
- FLX_THERMO lining in all other panels
- Taped core and critically taped seam junctions
- 3D stitch
- Resist cuff, ankle and oversize knee panels
- Compression cut cuffs
- Apex fit

BLACK

US - 2, T2, 4, T4, 6, T6, 8, 10, 12
80% Neoprene, 15% Nylon, 5% Polyester

**MISSION SHORT SLEEVED**

- 2/2mm

- Zip Free
- FLX_THERMO lining
- Critically taped seam junctions
- Resist ankle and oversize knees
- Compression cut neck and arm seals

BLACK, BLUE

US - 2, T2, 4, T4, 6, T6, 8, 10, 12
80% Neoprene, 15% Nylon, 5% Polyester

**MISSION LONG SLEEVED SPRING**

- 2mm

- FLX_THERMO lining in all panels
- Flatlocked
- Key pocket on sleeve
- Mini YKK zip at back
- Adjustable soft feel collar

BLACK, BLUE

US - 2, 4, 6, 8, 10, 12
80% Neoprene, 15% Nylon, 5% Polyester

**MISSION SHORTY**

- 2mm

- Zip Free
- FLX_THERMO lining
- Critically taped seam junctions
- Compression cut neck and arm seals

BLACK, BLUE

US - 2, 4, 6, 8, 10, 12
80% Neoprene, 15% Nylon, 5% Polyester

**MISSION JACKET**

- 1mm

- FLX_THERMO lining
- Key pocket on sleeve
- Front zip

BLACK, BLUE

US - 2, 4, 6, 8, 10, 12
80% Neoprene, 15% Nylon, 5% Polyester

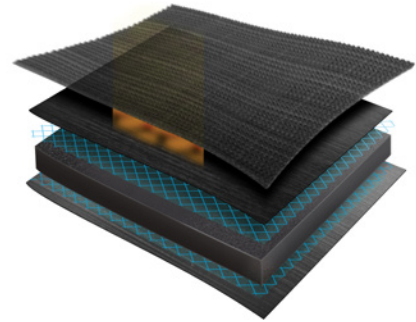
QUANTUM SERIES

Game changing approach.

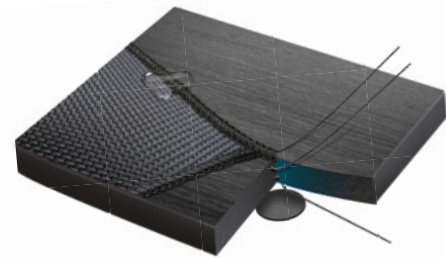
The Quantum is not entry level, budget or cheap. This range embodies our game changing approach to performance wetsuits; performance and warmth combined with next level durability at an affordable price.

The build quality on Quantum matches our standards set throughout the range - all seams are 3D stitched and taped or critically taped for maximum security. All panels use DK limestone neoprene and our specially developed linings - stretch zones feature our top end S type neoprene lined with FLX lining. Internally THERMO is used in all upper body panels where wind chill is a factor. The body makes use of NPM, our high flex lining with very high surface resistance and our high modulus D foam neoprene. Using our super high end Apex Fit pattern for perfect fit and extreme freedom of movement and available in our 'Easy In' chest zip entry.

The Quantum will change your expectation of a what an affordable wetsuit can be.

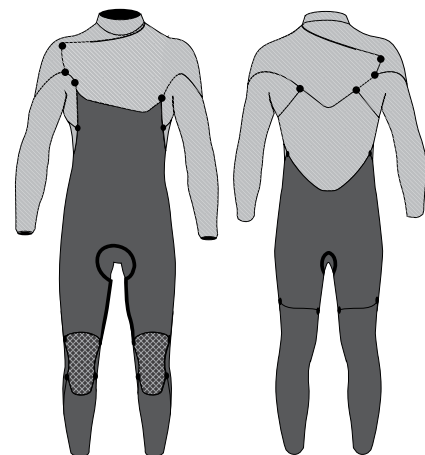


S type neoprene in all upper body panels with our FLX_THERMO lining inside and out gives the same full stretch as the Mission model in the arms, shoulders and back - the key areas for paddling and flexibility - making the Quantum feel like a top end suit.



The staple of any good performance cold water wetsuit - double glued and 3D stitched. All seam junctions are spot taped inside for extra strength and the critical crotch seam is fully taped.

This method is water tight, strong and very flexible.



INCREDIBLE PRICE : PERFORMANCE RATIO

- S TYPE NEOPRENE IN SHOULDERS AND ARMS
- APEX FIT PATTERN
- 3D STITCH AND TAPED AT SEAT PANEL



MENS

QUANTUM CHEST ZIP FULL SUIT

- 5/4/3mm
- 3/2mm

With the incredible fit and function of our Apex Fit pattern, S type neoprene in all upper body panels and FLX_THERMO lining inside and out, the Quantum has the same full stretch of the Mission model in the arms, shoulders and back - the key areas for paddling and flexibility - making this a performance wetsuit at an insane price.

Combined with top end features like Compression cut seals, 3D stitch and taped seams this feels like a top end wetsuit.

- 'Easy in' Chest Zip design
- FLX_THERMO lining
- 3D stitch

BLACK

XS, S, MS, M, MT, L, XLS, XL, XXL
80% Neoprene, 15% Nylon, 5% Polyester



QUANTUM CHEST ZIP HOODED

- 5/4/3mm
- 'Easy in' Chest Zip with YKK zip
- Built in hood with peak, adjustable seal and soft chin guard
- FLX_THERMO lining
- 3D stitch
- Critical Tape/Taped seat panel seam

BLACK, GREY

XS, S, MS, M, MT, L, XLS, XL, XXL
80% Neoprene, 15% Nylon, 5% Polyester



QUANTUM CHEST ZIP SHORT SLEEVED

- 3/2mm
- FLX_THERMO lining
- 3D stitch
- Critical Tape
- Taped seat panel seam

BLACK, GREY

XS, S, MS, M, MT, L, XLS, XL, XXL
80% Neoprene, 15% Nylon, 5% Polyester



QUANTUM CHEST ZIP HOODED

- 5/4/3mm
- FLX_THERMO lining
- 3D stitch
- Critical Tape
- Taped seat panel seam

BLACK, GREY

US - 2, 4, 6, 8, 10, 12
80% Neoprene, 15% Nylon, 5% Polyester



QUANTUM CHEST ZIP FULL SUIT

- 5/4/3mm
- 3/2mm
- FLX_THERMO lining
- 3D stitch
- Critical Tape
- Taped seat panel seam

BLACK, GREY

US - 2, 4, 6, 8, 10, 12
80% Neoprene, 15% Nylon, 5% Polyester



QUANTUM CHEST ZIP SHORTY

- 3/2mm
- FLX_THERMO lining
- 3D stitch
- Critical Tape
- Taped seat panel seam

BLACK, GREY

XS, S, MS, M, MT, L, XLS, XL, XXL
80% Neoprene, 15% Nylon, 5% Polyester



QUANTUM CHEST ZIP SHORT SLEEVED

- 3/2mm
- FLX_THERMO lining
- 3D stitch
- Critical Tape
- Taped seat panel seam

BLACK, GREY

US - 2, 4, 6, 8, 10, 12
80% Neoprene, 15% Nylon, 5% Polyester



QUANTUM CHEST ZIP SHORTY

- 3/2mm
- FLX_THERMO lining
- 3D stitch
- Critical Tape
- Taped seat panel seam

BLACK, GREY

US - 2, 4, 6, 8, 10, 12
80% Neoprene, 15% Nylon, 5% Polyester

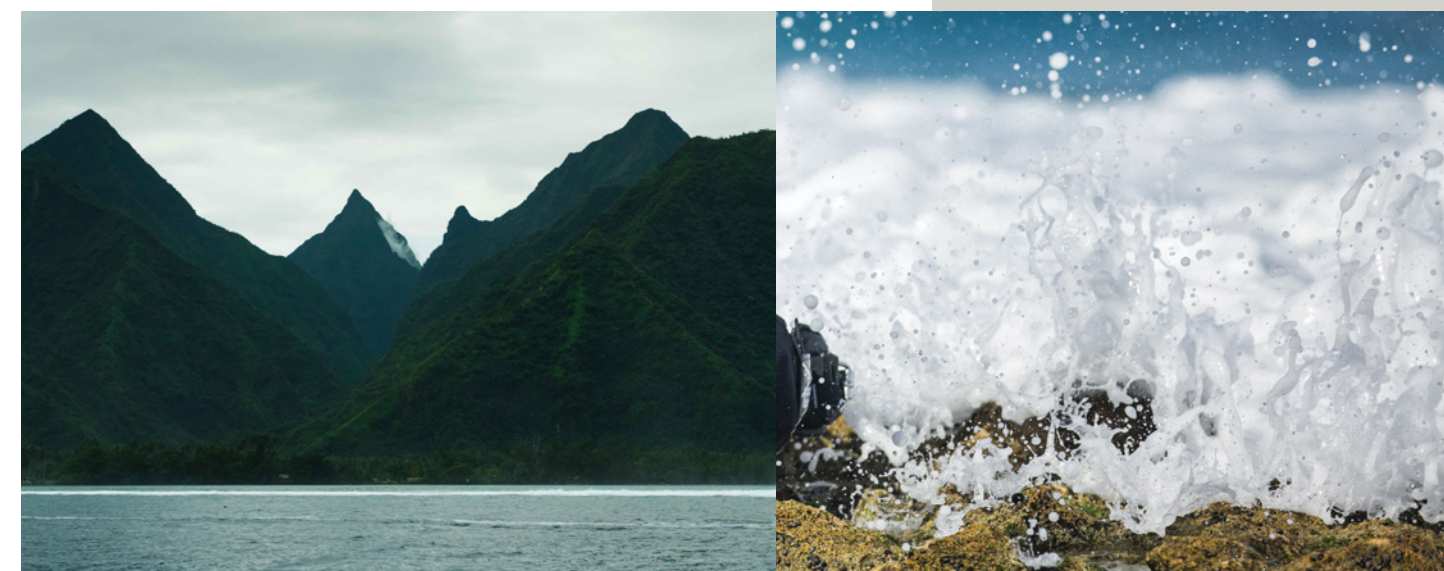
RT WETSUITS

DESIGNED FOR PURPOSE, BUILT TO LAST

Dakine RT wetsuit range is the product of many years of research. In our work and lives we are avid users of wetsuits and all watersports equipment. We surf, kite, sail, swim, scramble and rock hop with friends, family, colleagues and customers. Being a team of people with diverse interests, wide ranging sports and a keen understanding of product we spent years designing and redesigning products in our minds, talking to customers and shop owners from all water and outdoor activities.

What was apparent from very early on is the lack of wetsuits designed for what we do. Very few owners of high end surf wetsuits exclusively use them to surf. Most of us are just as often out for a paddle, swim or fish or just scrambling down a waterfall. And high end surf suits just aren't built for this.

The RT range is our vision of a wetsuit designed for any water based activity and adventure. We designed the brief around the environments and created something purpose built for the activities we love to do. Initially these are based around commercial activities of outdoor centres, whitewater and surf rental - the most hard wearing uses.



RT WETSUIT TECH

RT PATTERN

The RT pattern is unique to this line - seam placement, cut and fit, zip position and length, panel size and shape are all designed for purpose. We use a back zip for ease of entry to non-frequent water users, with an oversized adjustable collar. All seam junctions are off-set to avoid 4 way junctions and spread the force along the seam. We position the seams away from the most high wear areas: the seat and below the knee which we designed into a single front leg panel. High flexibility is limited to the shoulder and underarms, meaning the forearm can be abrasion resistant and hi-vis for safety.

The cut is slightly more generous than our surf specific lines - to fit the widest range of body shapes and to make it easier to get in and out.

MATERIALS:

External linings.

- FLX- Stretch woven for extreme flex and dope dyed, only in key stretch areas.
- NPM - high wear lining where durability is a priority.
- RESIST - extremely high wear external lining where durability is a priority, used extensively.

Neoprene foam.

- S type is used in key stretch areas.
- D foam is everywhere else, especially in areas of high impact such as kneepads.

All foam is limestone based, reduced PAH, Carbon Black neoprene which cuts CO₂ emissions by 200g per wetsuit.

AquaA Solvent Free Glue

Solvent free lamination eliminates 600 grams of harmful VOC's per wetsuit.

Internal linings.

- FLX - Stretch woven for extreme flex and dope dyed.
- NPM - high wear lining where durability is a priority.

Dope dyed fabrics saves 104 liters of water per kg of fabric and 26% reduced carbon footprint.

DOUBLE THREAD 3D STITCH - Water tight and very strong, the double thread stitch wont run if torn.

2 x GLUED SEAMS - Glued is applied in a 2 stage process for absolute hold and water tight seal.

SINGLE THREAD 3D STITCH - On 5/3mm models used on the inside for extra strength.

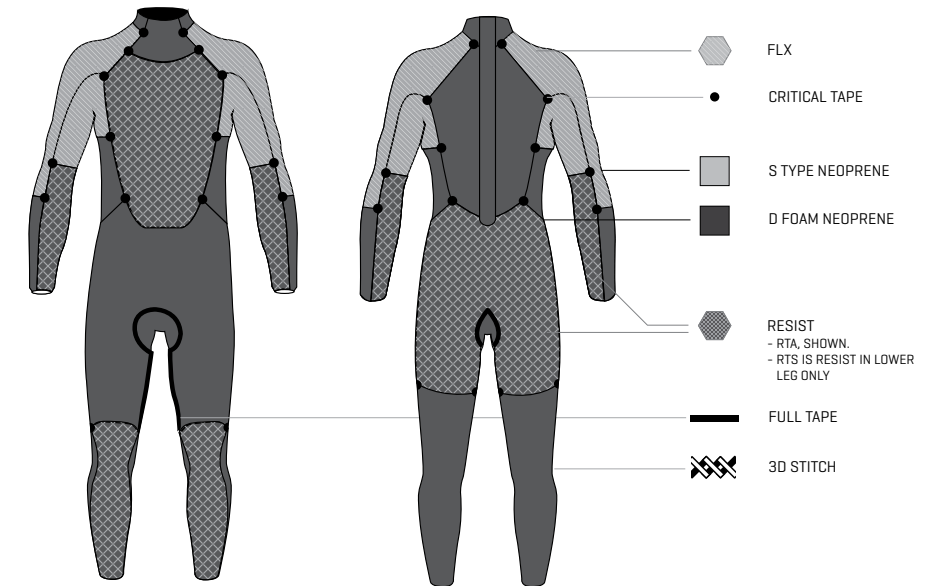
CRITICAL TAPE - high wear lining where durability is a priority.

CONSTRUCTION:

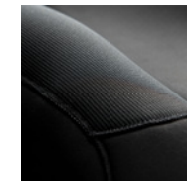
The RT's durability has a lot to do with the fine details in the construction. Pattern and materials are vital to the overall function and fit, but the small details are most critical to avoid failure.

RTA is the Adventure model. Shown right, this has the Resist lining in the knee and lower leg, seat, chest and forearm for absolute strength.

RTS is the Surf model. This has the Resist lining in knee and lower leg only for more flexibility, with Mesh smooth skin in the chest for grip on a surfboard when lying down.



FEATURES:



RESIST PANELS

Tactically placed abrasion resistant panels in areas of high wear or high material fatigue.



LONG ZIP WITH CORROSION FREE SLIDER

Makes getting in and out easier and reduces the wear and risk of failure.



LARGE ADJUSTABLE COLLAR

For comfort and a good seal on any neck size.



ROLLED SEALS

Simple but effective - rolled seals are the most durable plus offer a great barrier to water entry.



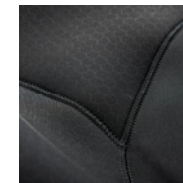
HI-VIS PANELS

On the forearm for maximum visibility if wearing a PFD or when signalling.



LARGE SIZE PRINT

Printed inside and out to easily find the right size when suits are on the rack.



3D STITCH

A double blindstitch system for zero water penetration and maximum strength.



TAPED AND CRITICALLY TAPED SEAMS

Neoprene tape applied to the inside seams and seam junctions. Used in critical tape for strength or full seam tape for absolute seal.



MENS

RTA BACK ZIP FULL SUIT

- 5/3mm
- 3/2mm

Built for adventure - Resist panels in all abrasion areas: Knee and lower leg, seat, chest and forearms for absolute strength.

- True thickness panels for warmth
- 80% panels D foam neoprene
- FLX Lined shoulders
- Hi-Vis yellow arms
- Large external and internal size print
- Taped seat seam
- Critical tape on all seam junctions
- Oversize adjustable neck
- Large gauge zip with plastic corrosion free slider
- Rolled seals

BLACK, YELLOW

XS, S, M, L, XL, XXL
80% Neoprene, 15% Nylon, 5% Polyester



RTS BACK ZIP FULL SUIT

- 5/3mm
- 3/2mm

Built for surf - Resist panels in the knee and lower leg for flexibility and Mesh smooth skin chest for grip on a surfboard when lying down.

- True thickness panels for warmth
- 80% panels D foam neoprene
- FLX Lined shoulders
- Hi-Vis orange arms
- Large external and internal size print
- Taped seat seam
- Critical tape on all seam junctions
- Oversize adjustable neck
- Large gauge zip with plastic corrosion free slider
- Rolled seals

BLACK, ORANGE

XS, S, M, L, XL, XXL
80% Neoprene, 15% Nylon, 5% Polyester

WOMENS

RTA BACK ZIP FULL SUIT

- 5/3mm
- 3/2mm

Built for adventure - Resist panels in all abrasion areas: Knee and lower leg, seat, chest and forearms for absolute strength.

- True thickness panels for warmth
- 80% panels D foam neoprene
- FLX Lined shoulders
- Hi-Vis yellow arms
- Large external and internal size print
- Taped seat seam
- Critical tape on all seam junctions
- Oversize adjustable neck
- Large gauge zip with plastic corrosion free slider
- Rolled seals

BLACK, YELLOW

US - 2, 4, 6, 8, 10, 12
80% Neoprene, 15% Nylon, 5% Polyester



RTS BACK ZIP FULL SUIT

- 5/3mm
- 3/2mm

Built for surf - Resist panels in the knee and lower leg for flexibility and Mesh smooth skin chest for grip on a surfboard when lying down.

- True thickness panels for warmth
- 80% panels D foam neoprene
- FLX Lined shoulders
- Hi-Vis orange arms
- Large external and internal size print
- Taped seat seam
- Critical tape on all seam junctions
- Oversize adjustable neck
- Large gauge zip with plastic corrosion free slider
- Rolled seals

BLACK, ORANGE

US - 2, 4, 6, 8, 10, 12
80% Neoprene, 15% Nylon, 5% Polyester





CYCLONE 3MM HOOD

- 3mm
- Hexo_Therm internal lining
- Taped seams
- Peak and chin guard.

BLACK

XS, S, M, L, XL
80% Neoprene, 15% Nylon, 5% Polyester



STORM SNUG FIT VEST W.HOOD

- 2/1mm Airprene body/ Polyester shoulder and arm
- SPF 50+
- Includes pocket
- Drawcord at waist and board short loop

WHITE

XS, S, M, L, XL
65% Neoprene, 30% Polyester, 5% Elastane



CYCLONE ROUND TOE BOOT

- 7/5mm
- Sealed seams
- Hexo_Therm internal lining
- Resist panel at heel
- Dual texture sole, Arch strap, Pull tab

BLACK

US 5, 6, 7, 8, 9, 10, 11, 12, 13, 14, 15
60% Neoprene, 15% Nylon, 5% Polyester, 20% Rubber



CYCLONE SPLIT TOE BOOT

- 5/4mm
- 3/2mm
- Sealed seams on the 5/4
- Hexo_Therm internal lining
- Resist panel at heel
- Dual texture sole, Arch strap, Pull tab

BLACK

US 5, 6, 7, 8, 9, 10, 11, 12, 13, 14, 15
60% Neoprene, 15% Nylon, 5% Polyester, 20% Rubber



CYCLONE 3MM GLOVES

- 3mm
- Liquid sealed seams
- Silicon hex print palm
- Pull tabs

BLACK

XS, S, M, L, XL
80% Neoprene, 15% Nylon, 5% Polyester



CYCLONE HOODED 2.5MM VEST

- 2.5mm
- Hexo_Therm internal lining
- Taped seams
- Peak and chin guard.

BLACK

XS, S, M, L, XL
80% Neoprene, 15% Nylon, 5% Polyester



FOLDING REEF SHOE

- Mesh and 1mm
- Fits into the Cyclone, Mission and Storm Jacket pocket

BLACK

US 5, 6, 7, 8, 9, 10, 11, 12, 13, 14, 15
60% Neoprene, 15% Nylon, 5% Polyester, 20% Rubber



REEF SHOE

- 1mm
- Arch strap
- Ankle cord
- Drain holes

BLACK

US 5, 6, 7, 8, 9, 10, 11, 12, 13, 14, 15
60% Neoprene, 15% Nylon, 5% Polyester, 20% Rubber



RT BOOT

- 5mm
- Super tough boot designed for rockhopping and general watersports
- Large internal size print

BLACK

US 5, 6, 7, 8, 9, 10, 11, 12, 13, 14, 15
60% Neoprene, 15% Nylon, 5% Polyester, 20% Rubber

SIZE GUIDE AND WARRANTY

WARRANTY

General Warranty Information and Policy

We stand by the performance and quality of every product we make. As such we offer a comprehensive warranty to repair or replace any Dakine product that does not fulfil our high quality standards. If the product is found to be faulty under normal use and proper care, Dakine will repair or replace the product at our discretion. The decision to replace or repair a product is made by Dakine after the defective product has been sent to us. At no time does Dakine offer a refund. Defective product should be returned CLEAN AND DRY and postage prepaid. The return should also contain a note which should include returns number, product description, product defects, requested action, return address (including postcode), daytime telephone number with area code, customer/accounts name and a copy of the purchase receipt (general public enquiries only).

Product Warranty

Selected Flatlocked Wetsuits and GBS wetsuits: Limited 1-year warranty from date of purchase on workmanship and materials - Zips and Liquid seal excluded.

ACCESSORIES: Limited 90-day warranty, from date of purchase, on workmanship and materials.

Using the Warranty

There are 2 ways to use the warranty:

1. Return to store: (Retail Customer). Go back to your local Dakine dealer, they'll send your suit to our Dakine service centre. You must have proof of purchase (receipt or invoice).
2. Dakine Wetsuits repair service (Trade and Retail Customer). Send the product back to Dakine by certified mail, along with proof of purchase (receipt or invoice). Your wetsuit will be returned to you as soon as possible free of charge (if covered under warranty).

Returns

- Dakine does not accept color or size exchanges.
- Product may not be returned without obtaining a Return Authorisation number from Dakine. This returns number must be clearly visible on the outside of all returned packages. The issuance of returns is subject to the sole discretion of Dakine.
- All returned products must be shipped freight prepaid. Unauthorised packages/returns will be refused.
- Authorised returns will be credited back to the dealer's trade account including the discount terms after receipt of the product.
- Dakine has the right to refuse any returned product that is damaged by any means including but not limited to improper packing or improper display methods at dealer's location, or damage caused by customers.
- "Discounted," "Discontinued," "Seconds" and altered suits are FINAL SALES ONLY. NO RETURNS FOR ANY REASON WHATSOEVER (SUITS WITH INTERNAL LABELS MISSING ARE VOID OF WARRANTY UNLESS INSTRUCTED OTHERWISE).

The following will not be covered under warranty:

- Damage caused by anything other than defects in materials or workmanship.
- Use in commercial, rental, teaching or instructional programs or activities.
- Damage caused by extended or excessive exposure to sunlight, improper handling or storage, or failure to follow instruction provided with this product.
- This product when classified as being 2nd hand or it is being sold as a 2nd (it is being sold as a product with existing defects).
- Normal wear and tear, including scratches and fading.
- Wetsuits repaired/altered by a repair service other than Dakine.
- Materials over 1 year (from date of original purchase) or 90 days for accessories.
- Warranty request without original receipt.
- Damage caused by contact with chemicals (chlorine, petrol etc).

MENS	US	EU	HEIGHT	CHEST	WAIST	WEIGHT
	XS	46	5'6 - 5'8 167 - 172cm	34"-36" 86-91cm	26"-27" 66-68cm	125 - 140 lbs 56 - 63 kg
	S	48	5'7 - 5'9 170 - 175cm	36"-38" 91-96cm	27"-29" 68-74cm	135 - 155 lbs 60 - 70 kg
	TS	94	5'9 - 5'11 175 - 180cm	36"-38" 91-96cm	27"-29" 68-74cm	135 - 155 lbs 60 - 70 kg
	MS	25	5'7 - 5'9 170 - 175cm	38"-40" 96-101cm	30"-32" 75-81cm	150 - 170 lbs 68 - 77 kg
	M	50	5'9 - 5'11 175 - 180cm	38"-40" 96-101cm	30"-32" 75-81cm	150 - 170 lbs 68 - 77 kg
	TM	98	5'11 - 6'1 180 - 185cm	38"-40" 96-101cm	30"-32" 75-81cm	150 - 170 lbs 68 - 77 kg
	LS	26	5'9 - 5'11 175 - 180cm	40"-42" 101-106cm	32"-34" 81-86cm	170 - 190 lbs 77 - 86 kg
	L	52	5'11 - 6'1 180 - 185cm	40"-42" 101-106cm	32"-34" 81-86cm	170 - 190 lbs 77 - 86 kg
	LT	102	6'0 - 6'2 182 - 187cm	40"-42" 101-106cm	32"-34" 81-86cm	170 - 190 lbs 77 - 86 kg
	XLS	27	5'11 - 6'1 180 - 185cm	42"-44" 106"-112cm	34"-36" 86-91cm	190 - 210 lbs 86 - 95 kg
	XL	54	6'0 - 6'2 182 - 187cm	42"-44" 106"-112cm	34"-36" 86-91cm	190 - 210 lbs 86 - 95 kg
	XLT	106	6'2 - 6'4 187 - 192cm	42"-44" 106"-112cm	34"-36" 86-91cm	190 - 210 lbs 86 - 95 kg
	XXLS	28	5'11 - 6'1 182-187cm	44"-46" 112-116cm	36"-38" 91-96cm	210 - 230 lbs 95 - 105 kg
	XXL	56	6'0 - 6'2 182 - 187cm	44"-46" 112-116cm	36"-38" 91-96cm	210 - 230 lbs 95 - 105 kg

WOMENS	US	UK	EU	HEIGHT	CHEST	WAIST	WEIGHT
	2	8	32	5'3 - 5'5 160 - 165cm	28"-30" 71-75cm	22"-24" 55-60cm	95 - 105 lbs 43 - 48 kg
	T2	T8	T32	5'4 - 5'6 162 - 167cm	28"-30" 71-75cm	22"-24" 55-60cm	95 - 105 lbs 43 - 48 kg
	4	10	34	5'4 - 5'6 162 - 167cm	30"-32" 75-81cm	24"-26" 60-65cm	105 - 120 lbs 48 - 54 kg
	T4	T10	T34	5'5 - 5'7 165 - 170cm	30"-32" 75-81cm	24"-26" 60-65cm	105 - 120 lbs 48 - 54 kg
	6	12	36	5'5 - 5'7 165 - 170cm	32"-34" 81-86cm	25"-27" 63-68cm	115 - 135 lbs 52 - 61 kg
	T6	T12	T36	5'6 - 5'8 167 - 172cm	32"-34" 81-86cm	25"-27" 63-68cm	115 - 135 lbs 52 - 61 kg
	8	14	38	5'6 - 5'8 167 - 172cm	34"-36" 86-91cm	26"-28" 66-71cm	130 - 145 lbs 59 - 65 kg
	10	16	40	5'7 - 5'9 170 - 175cm	36"-38" 91-96cm	27"-29" 68-73cm	140 - 155 lbs 63 - 70kg
	12	18	42	5'8 - 5'10 172 - 177cm	37"-39" 94-99cm	29"-31" 73-79cm	145 - 160 lbs 65 - 72kg

BOOTS / REEF SHOES

US	5	6	7	8	9	10	11	12	13	14	15
US WOMENS	6.5	7.5	8.5	9.5	10.5	11.5	12.5	13.5	14.5	15.5	16.5
UK	4	5	6	7	8	9	10	11	12	13	14
EU	36	37	38-39	40-41	42	43-44	45-46	47	48	49	50
Cm	23.5	24.1	25.1	25.7	26.7	27.6	28.1	28.7	29.5	30.7	31.5



CONTACT

Greenover Sports
Unit A3
Westfield Business Park
Paignton
Devon
TQ4 7AU

Email: info@greenoversports.com
Phone: +44 [0] 1803 558885