

TANNING  
**essentials**® SIMPLE TANNING SYSTEMS *built purposely for a perfect spray tan.*

RAPID - TRAINING MANUAL

rapid



# TANNING essentials®

## WELCOME

Thank you for choosing the Tanning Essentials Rapid Spray Tan System. Please read the following to help assist you with the set up and maintenance of your spray tan unit. You can also view the full video on Rapid Spray Tan System Set Up, Maintenance and Troubleshooting via You Tube

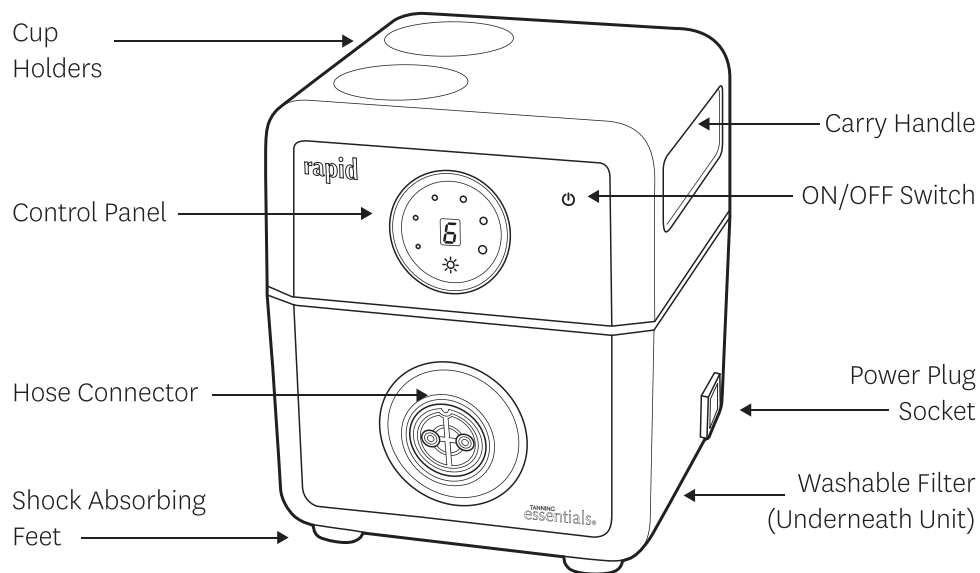
## QUICK SET UP GUIDE

The Tanning Essentials Rapid Spray Tan System contains:

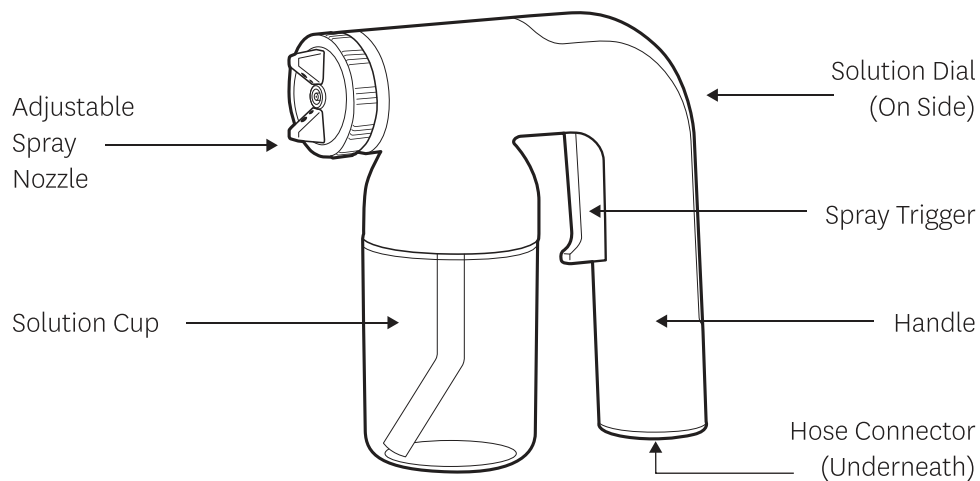
- |   |  |   |  |
|---|--|---|--|
| 1 | 1 x Rapid Spray System   | 4 | 2 x Solution Cups                                  |
| 2 | 2 x Rapid Spray Applicators<br>(Optional 1 gun version also available) | 5 | 1 x Power Cord                                     |
| 3 | 1 x Rapid Spray Hose   | 6 | 1 x Wall Mounting Set<br>1 x Manual (not pictured) |



## SPRAY SYSTEM



## SPRAY APPLICATOR



## SPRAY APPLICATOR



### STEP 1

Unscrew the solution cup and fill  $\frac{3}{4}$  full. Overfilling the solution cup may cause leaks.



### STEP 2

Insert solution cup and screw tightly.



### STEP 3

Set nozzle by turning. Vertical position for up and down and horizontal position for left to right spraying.



### STEP 4

Adjust solution dial on the back of the applicator to choose the amount/flow of solution you would like to dispense. A higher setting will result in more solution being distributed. Setting your applicator on 2-4 for the body and 2 for the face are best recommended.



### STEP 5

Attach hose- Ensuring the flat edge of the socket is facing upright. Align the prongs from the hose into the applicator fittings and screw the connection clockwise until firmly in place.

## SPRAY UNIT



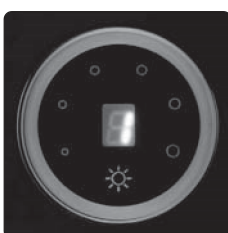
### STEP 1

Attach hose to unit. Pull connection back exposing the prongs, ensuring the groove is facing the top, line up the prongs to meet the unit, release the connection and screw in clockwise until firmly in place and sitting straight.



### STEP 2

Attach Power cord and turn power on at the wall switch.



### STEP 3

Turn on your unit and choose your desired settings. Recommended power setting is 3 depending on the solution and speed of application. The unit is controlled via touch technology that is located on the front of the spray unit.

## SPRAY UNIT MAINTENANCE GUIDE

- STEP 1** Clean the spray unit with a cloth. Avoid using anything abrasive. Windex and Mr. Sheen are useful products for maintaining the gloss finish of your spray unit.
- STEP 2** Clean the filter. Remove the filter from the base of the unit and rinse in warm water. Wait until filter is completely dry before re-fitting. Positioning the spray unit behind the spray technician when in use will ensure the unit stays cleaner for longer.



## SPRAY APPLICATOR MAINTENANCE GUIDE

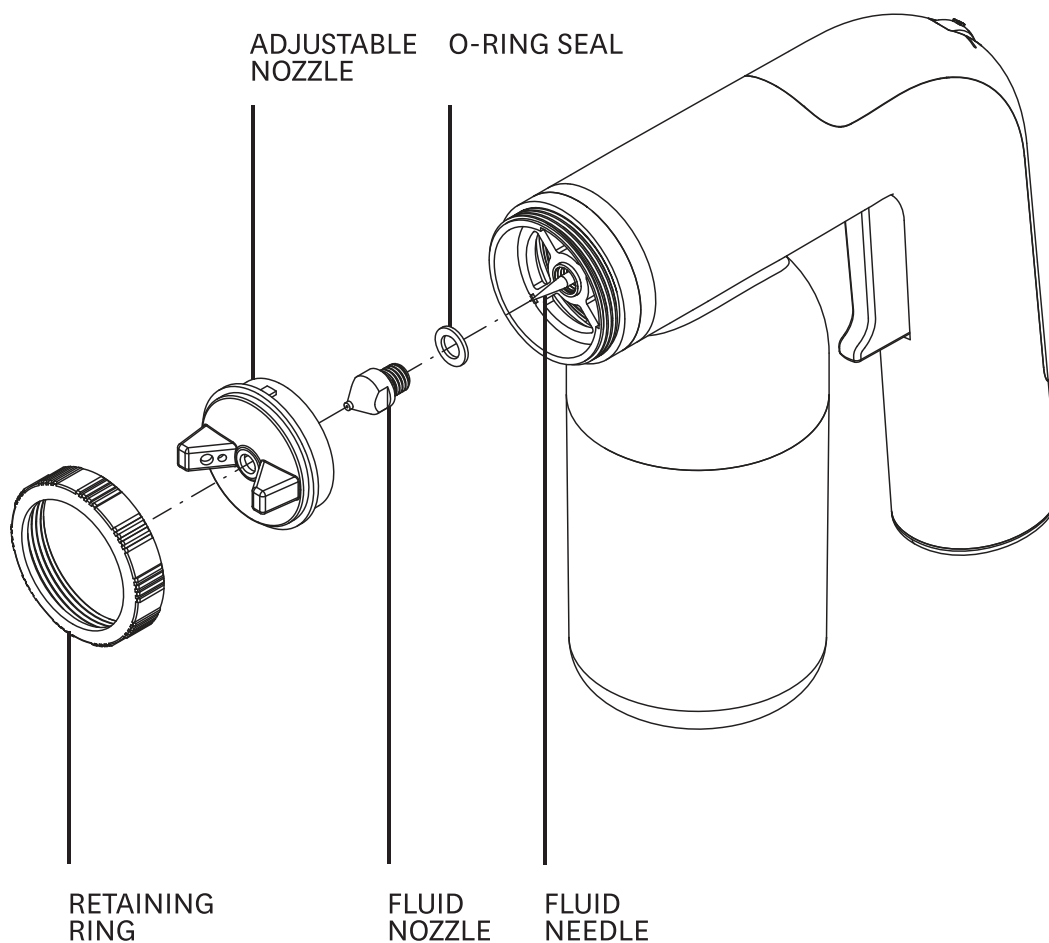
Maintenance on the Applicator must be run at the end of each day the applicator is used.

- STEP 1** Remove hose.
- STEP 2** Unscrew solution cup and empty any excess solution. It is recommended that this be done over a sink or a wet area.
- STEP 3** Rinse the empty solution cup with warm water.
- STEP 4** Refill the cup with warm water and screw back into the applicator, fix the solution dial to 'C' and spray until the water runs clear. Rinse and repeat if required
- STEP 5** Empty solution cup and re-set the solution dial on the back of the gun to the regular spray setting.
- STEP 6** Wipe any excess water from the applicator with a cloth and leave out to dry.



## SECONDARY SPRAY APPLICATOR MAINTENANCE

Secondary maintenance must be run on the applicator every 2-4 weeks or when required. Secondary maintenance will deliver a more thorough clean to prevent or clear any blockages and uphold the applicators performance.





## SECONDARY SPRAY APPLICATOR MAINTENANCE

---

### TROUBLESHOOTING - BLOCKED NOZZLE OR CONTINUOUS SPRAY WITHOUT PRESSING THE TRIGGER

- STEP 1**      Locate and unscrew retaining ring. To release; turn retaining ring in an anti-clockwise motion.
- STEP 2**      Gently pull on the adjustable nozzle to remove.
- STEP 3**      Fit an 8mm spanner to the flat edges of the fluid nozzle and turn anti-clockwise to unscrew.
- STEP 4**      Ensure you do not misplace the o-ring seal, which is located behind the fluid nozzle .
- STEP 5**      Once removed, visually inspect the fluid nozzle for small particles or blockages - rinse thoroughly with hot water.
- STEP 6**      Gently wipe the fluid needle to clean and remove any debris (the fluid needle should not be removed from the applicator at any time).
- STEP 7**      Once visually clear of any debris, re-attach fluid nozzle, ensuring the O-ring is in position, then use the spanner (8mm) to gently tighten back into place.
- STEP 8**      Replace adjustable nozzle and rotate back into position.
- STEP 9**      Repeat previous step, this time with the retaining ring.

## TROUBLESHOOTING

If you are experiencing problems with this unit, in the first instance please carefully read the relevant sections of the User Manual and the Troubleshooting section below. If you cannot solve your problem please contact your supplier for further assistance.

PROBLEM	CAUSE	WHAT TO DO
My solution is bubbling from the cup	Seal is not in properly	Fit the gun seal correctly.
	Solution Cup is not screwed in correctly	Unscrew and reattach the cup.
	The cup is cross-threaded	Unscrew and reattach the cup.
	Solution cup is overfilled	Empty some solution from the cup so it is half to 3/4 full.
The air flow is cutting in an out	The filter is dirty	Remove the filter from the base of the unit and rinse in warm water. Wait until filter is completely dry before refitting.
	The power setting need adjusting	Increase the power on your system.
The Spray Unit will not turn on	Power cord not attached	Ensure that the power cord is pushed in firmly to the base of the unit and wall socket
	Electricity not turned on	Ensure that the power point is on
The spray applicator is leaking	Spray Cup is not tight enough	Tighten the solution cup
	Too much solution	Empty some solution from the cup so it is half to 3/4 full
	Nozzle may be blocked	Perform secondary maintenance
My hose won't screw into the unit.	Prongs & groove are not aligning properly	Pull connection back exposing the prongs. Ensuring the groove is facing the top, line up the prongs to meet the unit. Release the connection & screw in clockwise.

## TROUBLESHOOTING

PROBLEM	CAUSE	WHAT TO DO
There is a 'C' showing in place of the number setting on the display face.	Your filter needs to be cleaned	Remove the filter from the base of the unit and rinse in warm water. Wait until filter is completely dry before re-fitting. To clear the setting hold down the heat button and the display will return to normal.
There is a 'E' showing in place of the number setting on the display face.	Overheated or electrical malfunction	This will go down once the machine has cooled down  This will not disappear if the machine is no longer able to function.
The spray is spluttering	Solution in cup low	Add solution to the cup
	Control dial is set too low	Increase power
	Nozzle may be blocked	Perform secondary maintenance
	Air pressure is low	Increase air pressure Clean filter in machine
No solution is coming out of the spray applicator	Nozzle may be blocked	Spray warm water through the applicator
	Solution in cup too low	Add solution to the cup
	Trigger is jamming	Spray warm water through the applicator while the Solution Dial is set at C and pull the trigger repeatedly until it frees
	Solution Dial on applicator set too low	Increase solution dial on applicator, number 1 being the lowest and Number 6 being the highest setting

TIPS & TRICKS

PROBLEM	CAUSE	WHAT TO DO
The solution is sitting on the skin or beading on the client	Too much tanning solution has been sprayed onto the skin	Dab area gently with a clean dry towel and re-spray lightly, blending the tan in
	Client has not prepared their skin correctly i.e. moisturiser or perfume on the skin	
	Client maybe excessively hot and perspiring	
	If machine air pressure is set to low it will not atomise the solution	Increase the air speed.
	Client may have used a body wash or scrub high in oil.	The client needs to remove the product from the skin.
The client has tanning solution in areas they don't wish to tan	The technician has sprayed the area incorrectly	Exfoliate the area using tan removing product for best results or a cloth and soap
	Client has touched part of their body with a spray tanned area	
The client appears orange	Too much tanning solution has been sprayed onto the skin	Exfoliate the skin before re-spraying and ensure the spray application is lighter
	The client may have left a rapid tanning solution on too long	
	The client may have low tolerance to DHA	

TIPS & TRICKS

PROBLEM	CAUSE	WHAT TO DO
The spray tan has not developed as dark as desired	The spray tan solution used may be old or heat affected reducing the reaction in the skin. Sometimes a green hue will appear to indicate this	Be sure to keep the solution in a cool dry place and ensure the solution is fresh
	A different solution was sprayed or the spray application dial was set lighter	Ensure the client has followed the correct recommendations for preparation and post spray tan care
	The client may have showered or perspired before the tan could develop	The client can be resprayed if required after their minimum 8 hours and after a shower has been taken
	Client may have showered too early	
	Other factors may affect the tan's development, including diet, hormones and medication. Please refer to the client	
	Client may have used soap or body wash preventing DHA from developing on the skin.	

## WARRANTY INFORMATION

.....  
**IMPORTANT**

**Please keep your proof of Purchase and User Manual in a safe place as you will require these to make a warranty claim. Prior to making a claim you should read through the trouble shooting section in the manual and contact your supplier. All warranty claims should be made directly to your supplier.**

If within one (1) year from the date of purchase, the product fails due to a defect in material or workmanship, we will repair if possible or replace it free of charge with a comparable unit which may be new or refurbished. This warranty applies only to the original purchaser and is not transferable. The goods must be returned to the seller with proof of purchase to be assessed at the purchasers cost.

Warranties shall not apply to any defect, failure or damage caused by improper use or improper or inadequate maintenance and care. The manufacturer shall not be obligated under these warranties:

- a) to repair damage resulting from attempts by personnel other than authorised representatives to install, repair or service the product;
- b) to repair damage, malfunction, or degradation of performance resulting from improper use or incompatible solution;
- c) to perform maintenance or cleaning or to repair damage, malfunction, or degradation of performance resulting from failure to perform user maintenance and cleaning as prescribed;
- d) to repair damage, malfunction, or degradation of performance resulting from use of the product in an environment not meeting the operating specifications.

To activate your warranty, please complete the information and post to Tanning Essentials within 14 days of purchase.