

# TAN.LITE 32000

SPRAY TAN MACHINE



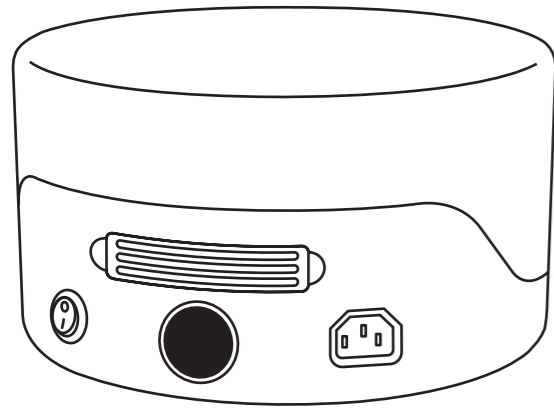
PRODUCT DATA & **ASSEMBLY GUIDE**

**MARQLABS**<sup>®</sup>  
PROFESSIONAL TOOLS

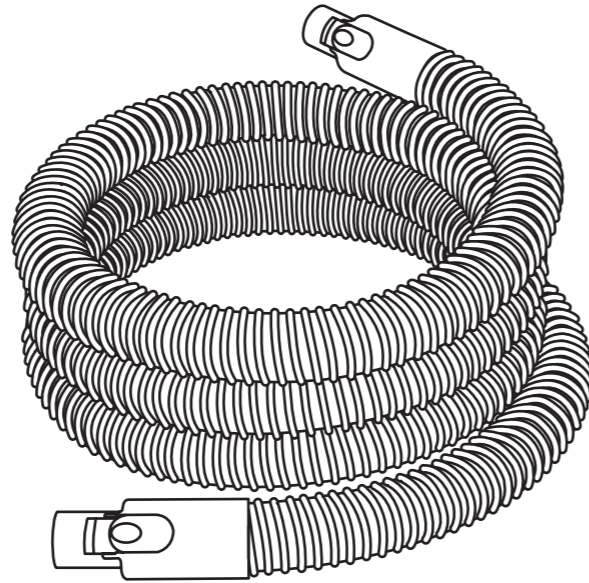
# TAN.LITE 32000

## COMPONENTS LIST

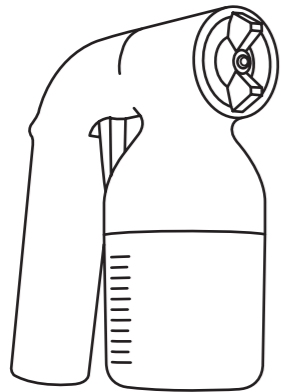
QTY	PARTS
1	Tan.Lite 32000 Spray Tan Machine
1	Excess 3 Spray Tan Applicator
1	Tan.Hose
1	Power Cord



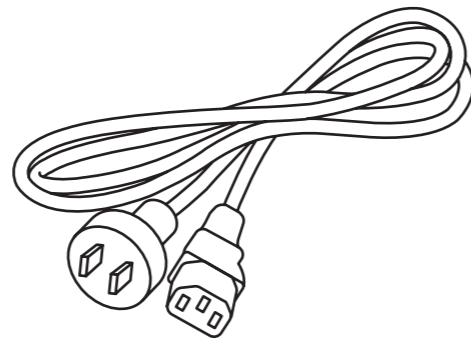
1 x Tan.Lite 32000 Spray Tan Machine



1 x Tan.Hose



1 x Excess 3 Spray Tan Applicator

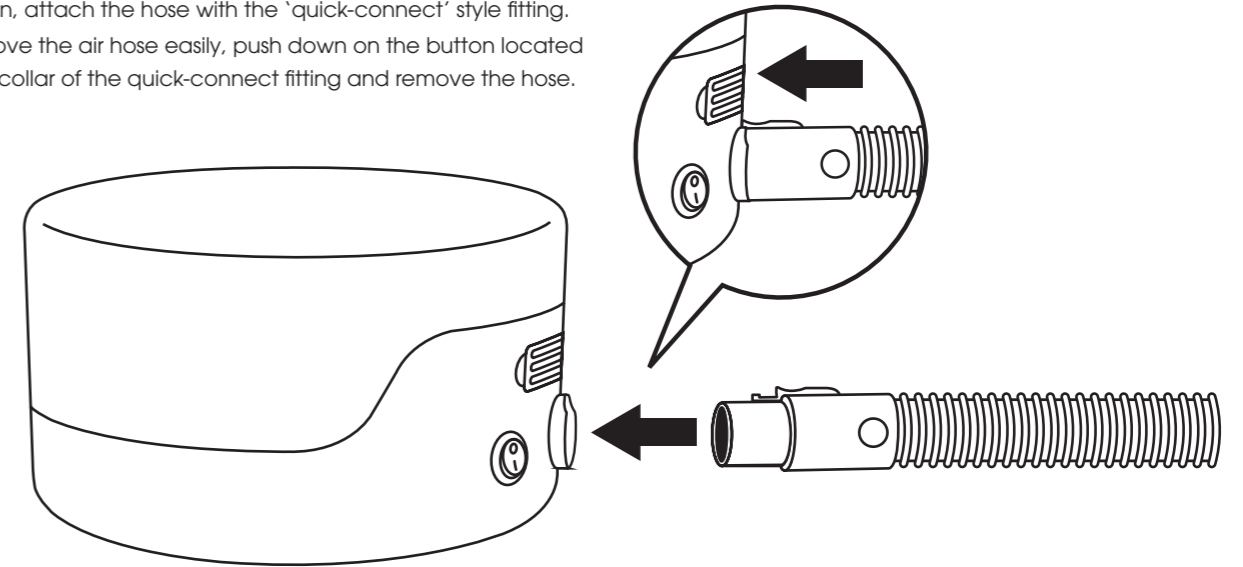


1 x Power Cord

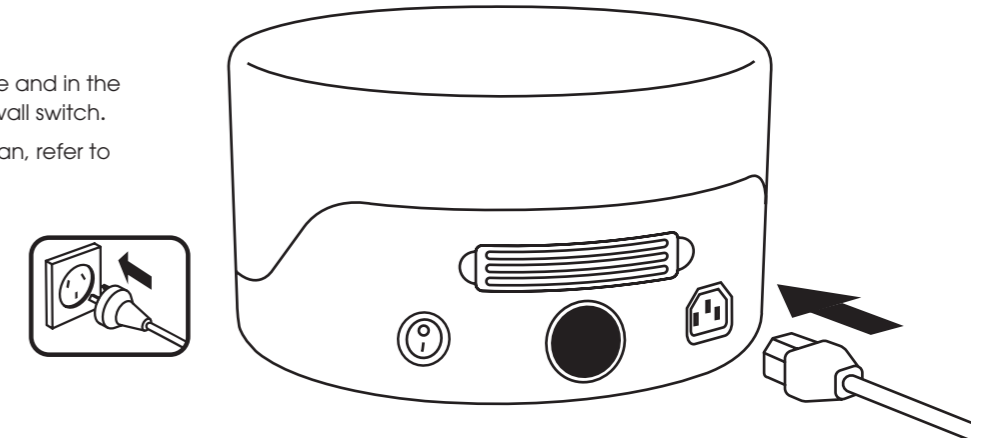
# TAN.LITE 32000

## ASSEMBLY GUIDE

1. To begin, attach the hose with the 'quick-connect' style fitting.
2. To remove the air hose easily, push down on the button located on the collar of the quick-connect fitting and remove the hose.



3. Insert the power cord into the device and in the wall plug and turn power on at the wall switch.
4. To connect the hose to the Handy. Tan, refer to page 4.



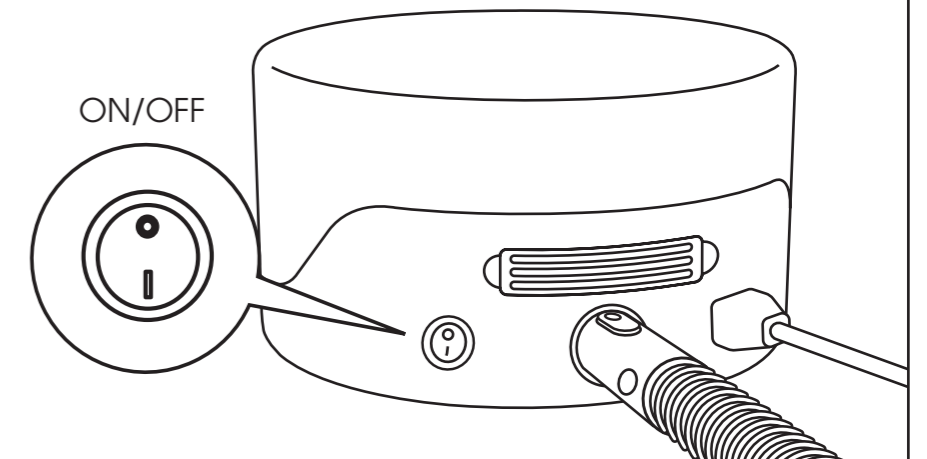
## OPERATION

### POWER ON : Airflow with Intelligent Air-Smart Control

Turn the device 'on' by pressing the on switch.

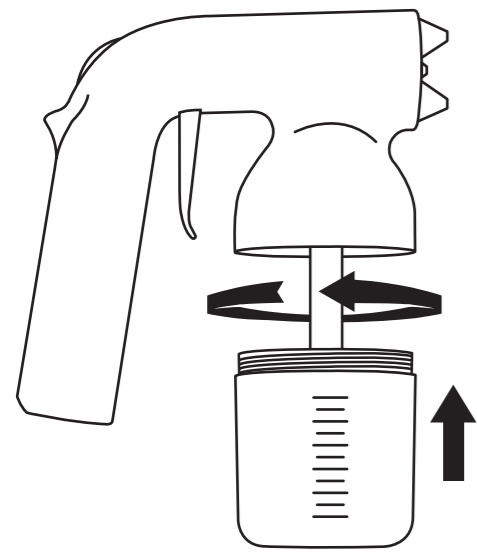
The Tan.Lite 32000 has an intelligent Air-Smart Switch set for the perfect airflow coming from the device into the Tan.Handy Spray Gun.

This creates flawless spray tanning results every time.



# EXCESS 3 SPRAY TAN APPLICATOR

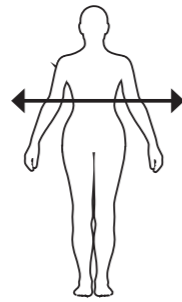
## ASSEMBLY GUIDE



### SETTING SPRAY PATTERN

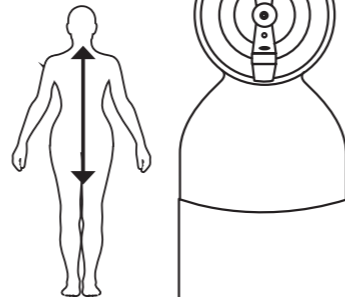
Adjusting the spray-pattern nozzle of your Tan.Handy to suit your preferred style of spray tanning.

#### SPRAYING SIDE TO SIDE ACROSS THE BODY



Set the nozzle fan 'Horizontal'. This spray pattern is perfect for spraying side to side ie. left to right - right to left across the body.

#### SPRAYING UP & DOWN THE BODY

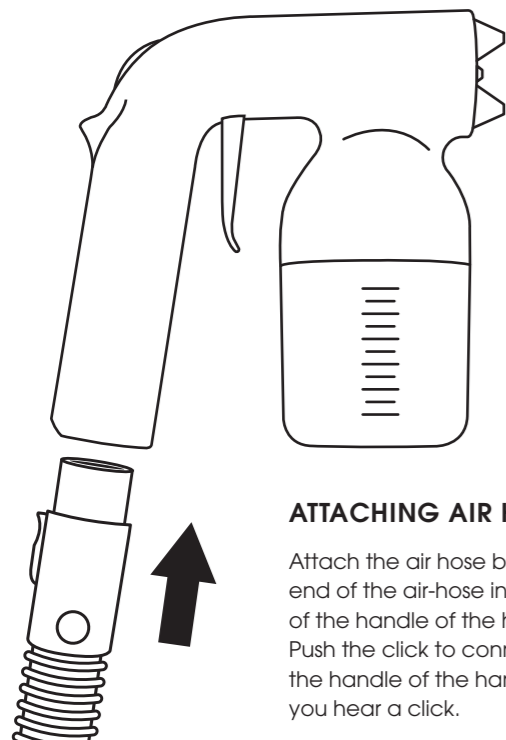


Set the nozzle fan Vertical. This spray pattern setting is perfect for spraying up and down, top to bottom of the body.

## OPERATION

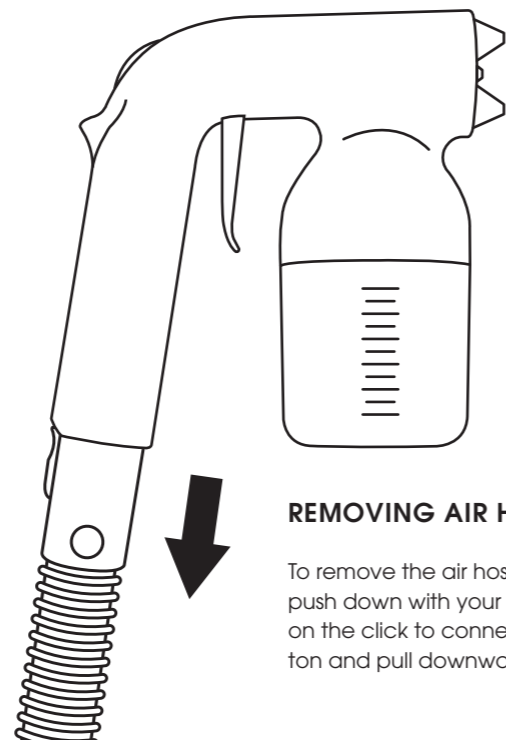
1. Un-screw the external solution cup away from the Tan.Handy and fill desired amount of spray solution. We recommend filling it a minimum of half way for best results. Over filling the solution cup may cause leaks.
2. Screw Cup back into the Tan.Handy. Ensure it is fully tightened so no leaks occur.

### QUICK CONNECT



#### ATTACHING AIR HOSE

Attach the air hose by inserting the end of the air-hose into the bottom of the handle of the handy tan. Push the click to connect fitting into the handle of the handy tan until you hear a click.



#### REMOVING AIR HOSE

To remove the air hose, push down with your thumb on the click to connect button and pull downward

# EXCESS 3 SPRAY TAN APPLICATOR

## OPERATION & MAINTENANCE

### SETTING SOLUTION AIR-FLOW CONTROL

The solution Flow Control dial on the back of the applicator will determine how much solution will be dispensed from the gun. You can adjust the flow of solution by adjusting the dial on the handle.

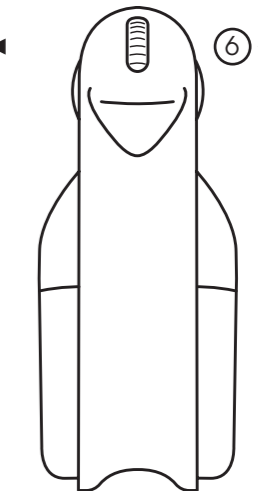
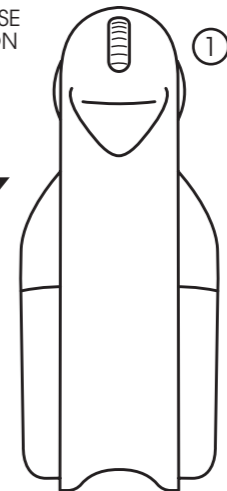
The higher number on your dial, the more solution will flow from the Tan.Handy. As you become more comfortable with your spray tan techniques, you can increase the flow of your solution.

MAXIMUM SOLUTION FLOW

MINIMUM SOLUTION FLOW



DECREASE SOLUTION



INCREASE SOLUTION



## CLEANING & MAINTENANCE

### EXTERNAL SOLUTION CUP

Rinse your solution cup with warm water until clean. Wipe all areas dry ready for the next use.

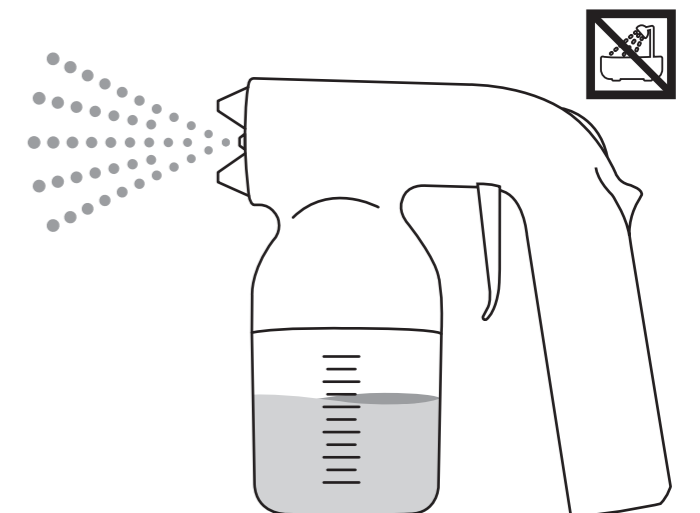
**Please note:** We recommend washing your cup under water, each time you remove the cup from the handy tan and refill. If you have spilled the contents of the cup and product gets in the screwband (grooved area of the cup being screwed into the HandyTan) simply wipe the grooves with Tan.Easy Cleaning Wipes or a wet cloth/paper towel. This will allow the cup to be easily tightened back onto the Tan.Handy and cause the cup not to leak excess spray solution.

### AIR HOSE

Wipe the Air Hose daily with Tan.Easy Cleaning Wipes. Alternatively use a damp cloth. Once dry, store in a clean dry place.

**IMPORTANT!** We recommend doing this over a sink or towel.

1. Remove the hose from the Excess 3 Tan Applicator.
2. Unscrew the cup from the Applicator and empty any un-used solution from the cup.
3. Rinse the empty solution cup with warm water until clean and then fill the cup about ¼ full of warm water.
4. Insert the cup and screw tightly, back into the Applicator and re-connect the hose.
5. Turn on your spray tan machine and adjust your solution Flow Control dial to the highest setting for maximum water spraying.
6. Direct the spray applicator into the sink and spray the clean water through until the cup is empty. This will clean through the needle and out to the spray-pattern nozzle.
7. Now that the cup is empty, re-set your solution Flow Control dial on the back of the Tan.Handy to your regular settings.
8. Disconnect the Applicator from the Air-Hose and unscrew the cup.
9. Wipe all areas dry including the cup and HandyTan ready for the next use.



**IMPORTANT!** You must not submerge the Applicator under water. If there is any excess spray tan solution, wipe down with clean wipes. Alternately you can use a smooth cloth (avoid anything abrasive) with a general glass cleaner to maintain the gloss finish.

# TAN.LITE 32000

## ⚠ WARNING & SAFETY

### IMPORTANT SAFETY PRECAUTIONS

Before using the Tan.Lite, read all instructions and cautionary markings in this manual and on the device. When using an electrical appliance, basic precautions should always be followed, including the following:

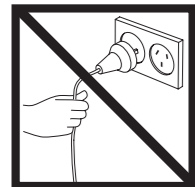
#### WARNING

##### TO REDUCE THE RISK OF FIRE, ELECTRIC SHOCK, OR INJURY:

1. Do not leave product unattended when plugged in. Unplug from outlet when not in use and before servicing.
2. Do not use outdoors or on wet surfaces.
3. Do not allow to be used as a toy. Close attention is necessary when used by or near children.
3. This product is not intended for use by persons (including children) with reduced physical, sensory or mental capabilities, or lack of experience and knowledge, unless they have been given supervision or instruction concerning use of the appliance by a person responsible for their safety.
4. Use this device only for its intended function and do not use attachments not recommended by the authorized Marq Labs manufacturer.
5. Do not use the device if the cord is damaged. In the event of damage discontinue use immediately. If the supply cord is damaged, it must be replaced by the authorized Marq Labs manufacturer.
6. If device is not working as it should, has been dropped, damaged, left outdoors, or dropped into water, do not use, contact Marq Labs Customer Care via the website or regional telephone number.
7. Do not pull or carry by cable, use cable as a handle, close a door on cable, or pull cable around sharp edges or corners. Keep cable away from heated surfaces.
8. Do not unplug by pulling on cable. To unplug, grasp the plug, not the cable.
9. Do not handle plug with wet hands.
10. Do not put any object into openings. Do not use with any opening blocked; keep free of dust, lint, hair, and anything that may reduce air flow. Switch off and unplug the product before attempting to remove any blockage.
11. Turn off all controls before unplugging.
12. Do not spray flammable or combustible liquids, such as gasoline, or use in areas where they may be present.
13. Do not use without the filter in place.
14. Never look directly into the airflow when device is in use.
15. Do not use an extension cord unless the cord complies with local regional electrical safety standards
16. Periodically inspect the power cord for signs of damage

#### SAVE THESE INSTRUCTIONS

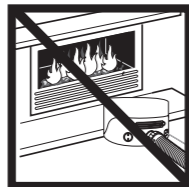
This product is intended for professional use only.



Do not pull on cable



Do not submerge in water or get wet



Do not use near open flames

# TAN.LITE 32000

## WARRANTY & GUARANTEE

### MARQ LABS GUARANTEE

#### 1 YEAR TROUBLE FREE WARRANTY

Congratulations on your purchase. We trust you will be happy with your purchase as the products are designed to give you many years of service. To activate your Guarantee, please complete the information within 30 days of purchase. This form has details of our guarantee terms & conditions so please read it carefully, fill it in and return it to the address at the back of this manual. Alternatively you can register online at [minetanbodyskin.com](http://minetanbodyskin.com). Keep this form, with your original proof of purchase for any claim under guarantee. If you have any queries or require further information on your product please contact your local representative of Marq Labs Pro Tools Products.

*TO REGISTER YOUR EQUIPMENT OR LODGE A WARRANTY CLAIM PLEASE VISIT [MINETANBODYSKIN.COM/WARRANTY/](http://MINETANBODYSKIN.COM/WARRANTY/)*

### TERMS & CONDITIONS

If within one (1) year from the date of purchase, the product fails due to a defect in material or workmanship, we will repair if possible or replace it free of charge with a comparable unit, which may be new or refurbished. This guarantee applies only to the original purchaser and is not transferable. The goods must be returned to the seller with proof of purchase to be assessed at the purchasers cost. Prior to making a claim, please ensure you have read all trouble-shooting questions at [minetanbodyskin.com](http://minetanbodyskin.com). If there is a defect with the device, it will be replaced free of charge with a comparable unit. Guarantee shall not apply to any defect, failure or damage caused by improper use or improper or inadequate maintenance and care. The manufacturer shall not be obligated under this guarantee:

1. To repair damage resulting from attempts by personnel other than authorized representatives to install, repair or service the product.
2. To repair damage, malfunction, or degradation of performance resulting from improper use or incompatible solution.
3. To perform maintenance or cleaning or to repair damage, malfunction, or degradation of performance resulting from failure to perform user maintenance and cleaning as prescribed.
4. To repair damage, malfunction, or degradation of performance resulting from use of the product in an environment not meeting the operating specifications.

**MARQLABS<sup>®</sup>**

PROFESSIONAL TOOLS

© 2019 Marq Labs. All rights reserved.

Marq Labs, 291 Edgewood Street, Alexandria, TN, 37012

**Email:** [brands@marqgroup.com](mailto:brands@marqgroup.com) **Phone:** AUST: 1300 819 331 USA: 1800 914 3880 EU/UK: +31 (0) 2023 74700