

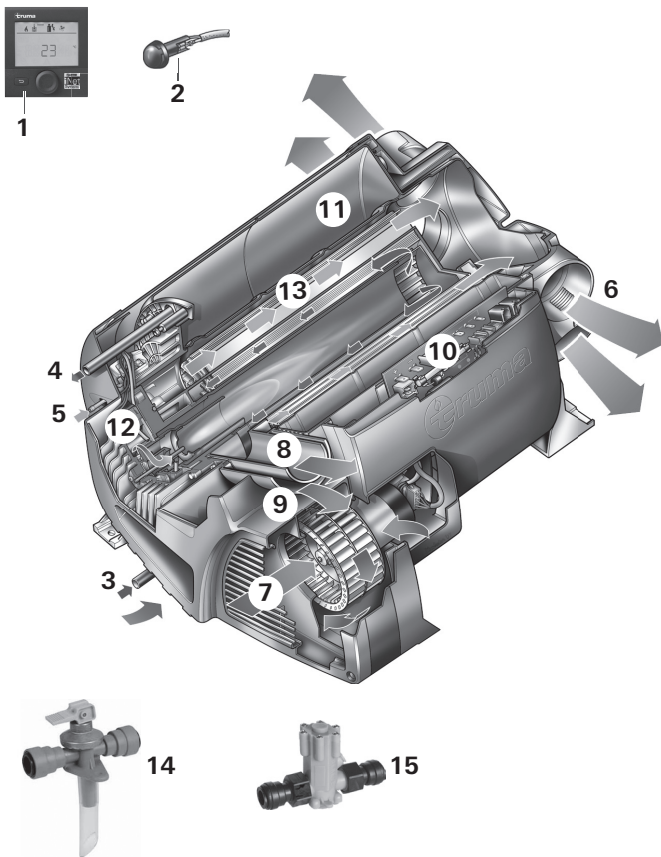


Combi D6 (Australia)

AUS Operating instructions

Page 2

To be kept in the vehicle!



- 1 Control panel
- 2 Room temperature sensor
- 3 Cold water connection
- 4 Hot water connection
- 5 Fuel connection
- 6 Hot air outlets
- 7 Recirculated air intake
- 8 Waste gas discharge
- 9 Exhaust air flue
- 10 Electronic control unit
- 11 Water container (10 litres)
- 12 Burner
- 13 Heat exchanger
- 14 Safety/drain valve
- 15 Water pressure reducer

Fig. 1

Table of contents

Symbols used	2
Intended use	2
Safety instructions	3
Function description	5
Fuel supply / quality	5

Operating instructions

Control panel	5
Room temperature sensor	5
Filling the hot water system	5
Draining the hot water system	6
Initial start-up	6
Filling the fuel lines	6
Start-up	6
Switching off	6
Maintenance	6
Fuses	6
Disposal	6
Technical data	7
Dimensions	7
Faults	8
Troubleshooting guide (water supply)	8
Accessories	8
Truma warranty policy	9

Symbols used

 Symbol indicates potential dangers.

 Note with information and tips.

Intended use

The Combi D6 (Australia) diesel heater is a warm-air heater with integrated hot water system (10 litre volume). This unit was designed for installation in motor homes and caravans. The applicable regulations must be complied with when the equipment is being installed in special vehicles and vehicles for transporting hazardous goods.

Safety instructions

In the event of a leak in the heater, fuel supply or the exhaust duct:

- switch off heater,
- open windows and door,
- ask an expert to inspect the entire system!

Ensuring a safe operating environment

- The unit may be operated only with appropriate Truma control panels and accessories.
- **Danger of suffocation!** To ensure dissipation of exhaust gases, operate the device outdoors only. Never use in enclosed spaces or tents or breathe in the exhaust gases.
- If the cowl has been placed near or directly beneath an opening window, the device must be equipped with an automatic shut-off device in order to prevent operation with the window open.
- **Do not** place articles on or against this appliance.
- **Do not** use or store flammable materials near this appliance.
- **Do not** spray aerosols in the vicinity of this appliance while it is in operation.
- **Do not** modify this appliance.
- **Do not** use any after market air filters or air grills. The use of such components may cause the unit to overheat.
- Keep flammable materials away from the area in front of the hot air outlets. Never block the hot air outlets.
- In order to avoid overheating of the Truma Combi, keep the air inlets of the Truma Combi, the air openings to the area in which the Truma Combi heater is installed and the spacing around the Truma Combi heater free of obstruction.
- Keep the cowl for the exhaust duct and combustion air intake free of contamination (slush, ice, leaves etc.) at all times.
- Danger from hot surfaces and exhaust gas. Do not touch the area around the wall cowl and do not lean any objects against the wall cowl or the vehicle.
- Do not operate the heater anywhere where flammable vapours or dust can form, e.g. in the vicinity of a fuel, carbon, wood or cereal storage facility or similar.
- **Warning:** Air from the discharge vent may be hot. Do not place combustible materials directly in front of the discharge vent. Keep curtains, bedding and other flammable materials away from the vent.
- If fitting an isolation switch, the switch must be installed in such a position that the heater can not be switched off unintentionally. The heater must always be turned off at the heater control. The 12 V isolation switch should only be used after the heater has completed its cool down cycle and has stopped completely.
- A diesel heating system always needs more power than a similar gas heating system. If there is a requirement for autarky of the same duration (service life without external power supply), Truma recommends investigating the possibility of retrofitting a larger and / or second battery.

Obligations of the operator / vehicle owner

- The operator is responsible for the water filled into the Truma Combi water container and its quality.
- The vehicle owner is responsible for correct operation of the Truma Combi.
- The installer or vehicle owner must apply the yellow sticker with the warning information, which is enclosed with the appliance, to a place in the vehicle where it is clearly visible to all users (e.g. on the wardrobe door)! Ask Dometic Service to send you stickers, if necessary.
- The system must comply with the respective regulations of the country in which it is used. National regulations and rules must be followed.

- The exhaust system must be inspected by a qualified technician at regular intervals, not exceeding two years.
- If the heater is not being used, always drain the water if there is a risk of frost. No warranty claims for frost damage will be accepted.
- Ensure that the inside of the vehicle is sufficiently ventilated. When the unit is started up, there may be some smoke and/or smell due to dust or dirt. Especially if it has not been used for a long time.
- This device may be used by children aged 8 years or above and by persons with reduced physical, sensory or mental capabilities or lack of experience and / or knowledge, provided that they are being supervised or have been given instructions with regard to the safe use of the device and have understood the potential risks. Children must not use the device as a toy.
- The exhaust gas double duct (exhaust gas muffler and suction pipe) must be inspected regularly, particularly following long journeys, to check for any damage and to ensure that the connection is sound; the same applies to the mounting of the heater and the cowl.

Operation while driving

- The heater must not be used during fuelling, or in enclosed car parks, in garages, or on ferries.
- To prevent damage to the Truma Combi D from spray water, such as when cleaning the vehicle, do not spray water directly into the wall cowl.

Safe handling of malfunctions

- If you notice unusual noises or smells, switch the Truma Combi D off.
- Danger of fire / explosion if you attempt to use a Truma Combi that has been damaged by flooding or if the vehicle has been involved in an accident. A damaged Truma Combi must be repaired by an expert or be replaced.

- Repairs to the heater may only be carried out by an expert.
- Have faults repaired by an expert without delay.
- Only carry out repairs yourself if the solution is described in the troubleshooting guide of this manual.
- Following a blow-back (misfire) always have the exhaust duct checked by an expert.

Maintenance / Repairs / Cleaning

- The unit may only be repaired and cleaned by an expert.
- Guarantee claims, warranty claims and acceptance of liability will be ruled out in the event of the following:
 - modifications to the unit (including accessories),
 - modifications to the exhaust duct and the cowl,
 - failure to use original Truma parts as replacement parts and accessories,
 - failure to follow the installation and operating instructions.

It also becomes illegal to use the appliance, and in some countries this even makes it illegal to use the vehicle.

- With a new Truma Combi D or if the unit has not been used for some time, rinse all hot/cold water hoses with drinking water thoroughly before use.

Function description

The Combi D6 diesel heater (Australia) is a warm-air heater with integrated hot water system (10 litre volume). The burner is fan-assisted, which ensures that operation is problem-free, even when on the move.

In **heating and hot water mode** the heater can be used to heat the room and heat water up at the same time. If only hot water is required, select **hot water mode**.

- In **hot water mode**, the water is heated at the lowest burner setting. Once the water temperature has been reached, the burner switches off.
- In **heating and hot water mode**, the unit automatically selects the required operating level according to the temperature difference between the temperature set on the control panel and the current room temperature. If the hot water system has been filled, the water is automatically heated as well. The water temperature depends on the selected operating mode and the heater output.

Fuel supply / quality

- The heater requires diesel fuel, as per the Australian Fuel Standard (Automotive Diesel). Operation with any form of biodiesel is not permitted.
- When operational, the fuel display in the fuel tank must not be allowed to drop to the “low fuel” mark.

In the event that the vehicle fuel tank runs empty, the opening of the fuel removal duct is roughly at the same height as the surface of the fuel. In this state, and in particular when the fuel in the vehicle fuel tank slops around due to vehicle movement, a large amount of air is sucked in. This leads to an irregular supply of fuel to the heater. The heater burner is unable to maintain clean combustion in this condition, leading to the formation of smoke and odours.

Operating instructions

Read the safety instructions and operating manual carefully before starting the unit.

i Operating instructions can be viewed in offline mode with a mobile device and the Truma App. Download the operating instructions when you have a WiFi connection and save them on your mobile device.

i Before using for the first time, it is essential to flush the entire water supply system with clean water. If the heater is not being used, always drain the water if there is a risk of frost. **No warranty claims for frost damage will be accepted.**

Control panel

The control panel is described in a separate operating instruction.

Room temperature sensor

To measure the room temperature, an external room temperature sensor (2) is located in the vehicle. The location of the sensor is determined individually by the vehicle manufacturer, depending on the vehicle type; consult the operating instructions for your vehicle for further details.

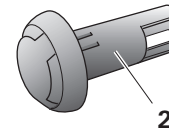


Fig. 2

The temperature setting on the control panel depends on personal heating requirements and the design of the vehicle, and must be determined individually.

Filling the hot water system

Check that the drain valve in the cold water intake is closed: Lever should be in horizontal position, position (k).

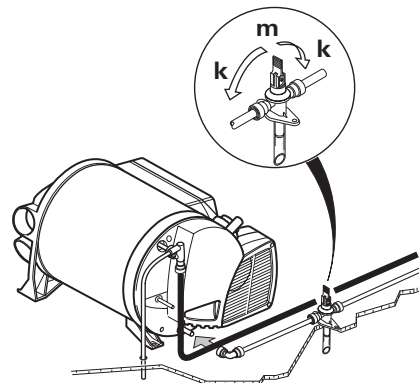


Fig. 3

k = Lever position “Closed”
m = Lever position “Drain”

- Switch on the power for the water pump (either by the main switch or the pump switch).
- Open hot water taps in kitchen and bathroom, (set pre-selecting mixing taps or single-lever fittings to “hot”).
- Leave the fittings open for as long as it takes for the hot water system to displace the air and fill up, and the water to flow without interruption.

i If only the cold water system is operated, without the hot water system, the hot water system still fills with water. To avoid frost damage, the hot water system must be drained through the drain valve, even if it was not operated.

! When connecting to a central water supply (rural or city mains), a pressure reduction valve must always be installed to prevent pressures above 280 kPa from developing in the hot water system.

Draining the hot water system

- Switch off the power for the water pump (either by the main switch or the pump switch).
- Open hot water taps in kitchen and bathroom.
- Open safety/drain valve:
Lever in vertical position, position (m).

The hot water system is now drained directly to the outside via the drain valve. Place a bucket beneath the outlet to check whether the water has completely drained away (10 litres).

There shall be no claims under guarantee for damage caused by frost!

Initial start-up

(or when the fuel tank has run empty)

Filling the fuel lines

The heater normally has to be started up several times to fill the fuel lines.

Connect unit to control panel to do this. The unit automatically performs 2 start attempts (initial start and repeat) per switch-on procedure with a run time of 2 minutes in each case. If no flame is detected after the repeat start, the unit switches to fault and has to be switched off and on again at the control panel.

i After a total of 15 unsuccessful starting attempts (initial and repeat start) without forming a flame, the equipment is blocked. To remove the block, please contact the Dometic Service Centre (see www.truma.com).

Check fuel lines and connections for leaks after filling the fuel lines.

Start-up

The interior can be heated with or without water, depending on the setting.

- Check to make sure the cowl is unobstructed. Remove any covers that may be present.
- Fill the hot water system with water if necessary (see "Filling the hot water system").
- Switch on the unit on the control panel.

Switching off

- Switch the heater off on the control panel.
- The switch-off procedure may be delayed by several minutes because of internal heater operations.

Always drain water if there is a risk of frost!

Maintenance

Only original Truma parts may be used for maintenance and repair work.

- Even outside the season, the heater should be operated once a month for about ten minutes.
- Clean installation area at least once per year, and have unit checked for soiling and cleaned by an expert if necessary.

Biofilm, deposits and limescale must be removed using chemicals to protect the unit from infestation by microorganisms. Only chloride-free products must be used in order to prevent damage to the unit.

The effectiveness of the use of chemicals to combat microorganisms in the unit can be increased by heating the water in the hot water system to 70 °C at regular intervals.

- Set water temperature to 60 °C.
- Switch on unit.

i Once the water in the water heater has reached a temperature of 60 °C, the burner will switch off. The unit must stay switched on for at least 30 minutes and no warm water may be withdrawn. The residual heat in the heat exchanger will heat the water up to 70 °C.

Fuses

The fuses are located in the electronic control unit, beneath the connector cover. When replacing a fuse, be sure to use the same type.

Device fuse: 10 A – slow – 5 x 20 mm (T 10 A)
Burner fuse: 20 A – slow – 6.3 x 32 mm

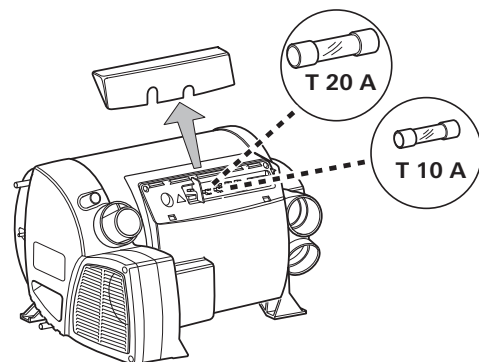


Fig. 4

Disposal

The heater unit must be disposed of in accordance with the administrative regulations of the country in which it is in use. National regulations and laws must be observed.

Technical data

(found by Truma Test conditions)

Fuel

Fuel, as per the Australian Fuel Standard (Automotive Diesel).
Operation with any form of biodiesel is not permitted.

Water volume

10 litres

Heating up time from approx. 15 °C to approx. 60 °C

Hot water system approx. 20 minutes (measured according to EN 15033)

Heater + hot water system approx. 80 min.

Pump pressure

max. 280 kPa

System pressure

max. 450 kPa

Rated thermal output (automatic output levels)

2000 / 4000 / 6000 W

Fuel consumption

220 – 630 ml/h (110 ml/h during normal operation with moderate heat output of 1000 W)

Air delivery volume (free-blowing without hot-air pipe)

max. 287 m³/h

Current input at 12 V

Heater + hot water system 1.8 – 7 A (in regular operation, between "Off" and "lowest operating level" less than 1.8 A).

Heating hot water system without operational heater, max. 1.8 A

Stand-by: approx. 0.001 A

Weight (without water)

Heater unit: 15.8 kg

Heater unit with peripheral devices: 17.2 kg

Declaration of conformity

The heater complies with UNECE Regulation No. 122 and bears the type approval number: E1 122R 000232

The heater complies with UNECE Regulation No. 10 and bears type approval number: E1 10R 035277



Dimensions

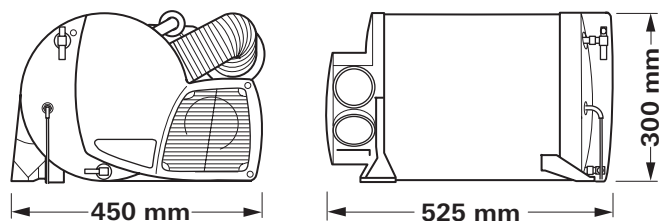


Fig. 5

We reserve the right to make technical modifications without notice.

Faults

Faults – Heater

Descriptions of possible fault causes and a troubleshooting guide can be found in the operating instructions for the control panel that is installed.

Faults – Water supply

Possible fault causes and a troubleshooting guide – See “Troubleshooting guide (water supply)”.

Troubleshooting guide (water supply)

Fault	Cause / Rectification
Water taking an extremely long time to heat up.	Water container furred. / Descale water system (see maintenance).
Water running away – hot water system cannot be filled.	Safety/drain valve open. / Close safety/drain valve.
Hot water system cannot be drained, even though the safety/drain valve is open.	Safety/drain valve drainage socket closed. / Check opening for soiling (slush, ice, leaves etc.) and remove if necessary.
Water dripping/flowing from drainage socket of safety/drain valve.	Water pressure too high. / Check pump pressure (max. 280 kPa). If the hot water system is connected to a central water supply (rural or urban connection), a pressure reducer must be used, which will prevent pressures higher than 280 kPa from occurring.
When opening the cold water tap, hot water comes out.	Hot water flows back through the cold water supply. / Fit a non-return valve in the cold water supply (refer to installation instructions “Water connection”).

If these measures do not resolve the fault, please contact the nearest Dometic Service.

Accessories

Truma CP plus

Digital control panel Truma CP plus (part no. 36020-01) with automatic air conditioning system for the iNet-capable Truma heaters Combi and Truma air conditioning systems Aventa Eco, Aventa comfort (from serial number 24084022 – 04/2013), Saphir Comfort RC and Saphir compact (from serial number 23091001 – 04/2012)

- The automatic air conditioning system automatically controls the heater and the air conditioning system until the required temperature is reached in the vehicle.
- With the Truma iNet Box extension, all TIN-Bus-capable Truma devices can also be controlled via the Truma App.



Fig. 6

Truma iNet Box

The Truma iNet Box (part no. 36400-01) for simple networking and control of Truma devices with a smartphone or tablet computer using the app.

- Simple installation and start-up via the Truma App
- Can be extended with the update function, which ensures that it is always up to date.



Fig. 7

Accessories (without picture) for control panel

- Cable 3 m (part no. 36110-01)
- Cable 6 m (part no. 36110-02)
- Cable 9 m (part no. 36110-03)

Truma warranty policy

The warranty is given by Dometic Pty Ltd, 6 Treforest Drive, Clayton, Victoria 3168, for 12 months from the date of purchase against any defect arising from faulty materials or workmanship.

Repairs will be carried out during normal business hours only by Dometic Pty Ltd, or its duly authorised service agents, and are subject to the warranty conditions and exclusions hereunder.

Warranty conditions

- The company will only provide service on presentation of proof of purchase, on either the Truma product, or the Caravan / RV / Pleasure Craft in which the Truma product has been installed, to any authorised service agent. The purchaser must allow the service agent to photocopy the proof of purchase to facilitate his claim to the manufacturer.
- Warranty repairs can only be performed by authorised service agents and under no circumstances will Dometic reimburse repairs carried out by unauthorised persons. Tampering with any part of the product by unauthorised personnel will automatically void the warranty.
- The product must be used for domestic purposes only. If the product is used for commercial purposes, the warranty is 6 months only.
- Where applicable, the products must be used on the appropriate electrical voltage, gas type and pressure, or fuel source.
- If at any time during the warranty period any part or parts are replaced with a part or parts not supplied or approved by Truma, this warranty shall immediately become void.

Important notice

Before calling a service technician please check carefully the operating instructions, service booklet and warranty terms and conditions. If the product fails for any of the reasons detailed therein, or is faulty due to abuse, misuse or improper installation, then a service fee shall be charged to the purchaser.

If you have any queries regarding the interpretation of the warranty you should contact Dometic Pty Ltd.

Whilst this book represents service outlets at the time of printing, changes occur from time to time. Should you have any queries or wish to locate your nearest authorised service agent please contact Dometic Pty Ltd.

Warranty does not cover

- Any heater which has been:
 - (a) Subject to misuse, neglect, accident or alteration by any person.
 - (b) Damaged or destroyed by fire, flood, act of God or other inevitable accident.
- Fair wear and tear.
- Damage from foreign substances such as dirt or liquid.
- Travelling expenses or call out fee to and from authorised service agents' premises.
- Accommodation or site expenses.
- Cleaning of the system. This is considered to be a part of normal product maintenance.
- Non operation of the heater or resultant damage to the unit where the heater has been operated in an out of level situation.
- Freight cost of the appliance or parts, to or from, point of service or transit damage.
- Dometic / Truma are not responsible for resultant loss or damage sustained by the purchaser.
- Non operation of the appliance or resultant damage to the unit where the appliance has not been installed, ventilated, flued or operated in accordance with the manufacturer's instructions.

Apart from any warranties implied by the Trade Practices Act 1974 or any relevant State legislation all other warranties express or implied whether arising by virtue of statute or otherwise are hereby excluded.

AUS In Australia, always notify the Dometic Service Centre if problems are encountered; in other countries the relevant service partners should be contacted (www.truma.com).

Having the equipment model and the serial number ready (see type plate) will speed up processing.

Dometic Pty Ltd
Building 3B,
Clayton Business Park
1508 Centre Road
Clayton, Victoria, 3168
Australia

Service (Australia)

Telephone: +61 (0)3 92 39 10 50
Facsimile: +61 (0)3 92 39 10 99

Dometic New Zealand Ltd.
Post Box 12011
1642 Penrose, Auckland
New Zealand

Service (New Zealand)

Telephone +64 (0)9 622 14 90
Facsimile +64 (0)9 622 15 73