

# BOAB

**1**  
EDITION

**BOAB  
PRODUCT  
CATALOGUE**

# OFF-ROAD SMART STORAGE SOLUTIONS

## About BOAB Products

BOAB has a range of vehicle mounted Storage Systems, Fuel and Water Tanks with unique capabilities to suit very harsh environments. The BOAB range of Tanks are designed by experienced 4WD enthusiasts to provide practical solutions to storage & space problems.

BOAB's roller drawer systems can be tailored to suit individual and vehicle requirements to allow for secure, tidy storage. BOAB's range of Ute slides are ideal for tradesmen and campers wanting quick easy access to items stored in vehicles luggage compartment, especially when canopies are fitted. BOAB's range of anchor tracks and tie down accessories allow for safely securing goods during transportation. The BOAB range of nets and organisers offers clever solutions to storage inside and outside of the vehicle.

BOAB's comprehensive range of smart storage solutions are suitable for use for a variety of vehicles and are built durable to withstand harsh off-road conditions.



[www.dolium.com.au](http://www.dolium.com.au)



# CONTENTS PAGE

**1**      **About Poly Tanks & Accessories**

**2 - 3**    **Poly Diesel Tanks & Accessories**

**4 - 6**    **Poly Water Tanks & Accessories**

**7 - 10**   **Roller Drawer Systems**

**11**      **Roller Draw Wing Kits**

**12**      **Cargo Ute Slides**

**13 - 14**   **Anchor Track & Tie Down**

**15**      **About Insect Nets, Vehicle Organisers & Securing Solutions**

**16**      **Insect Nets**

**17**      **Securing Solutions & Safety**

**18**      **Vehicle Organisers**

# TRANSPORTABLE TANKS FOR OFF-ROAD EXPEDITIONS

## WATER TANKS

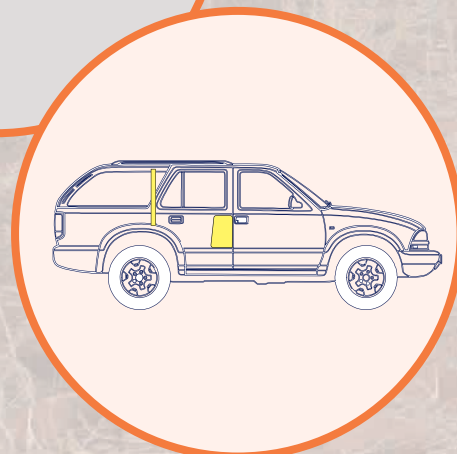
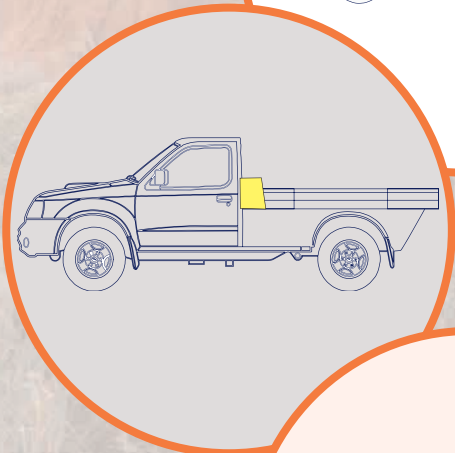
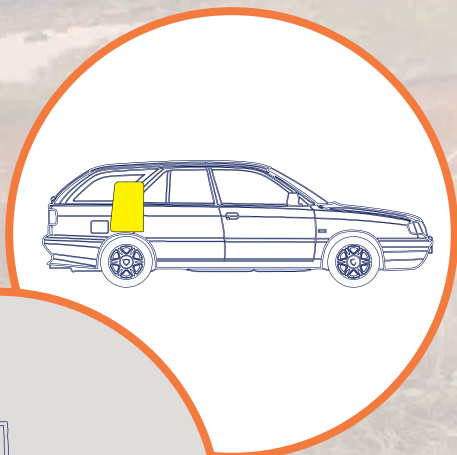
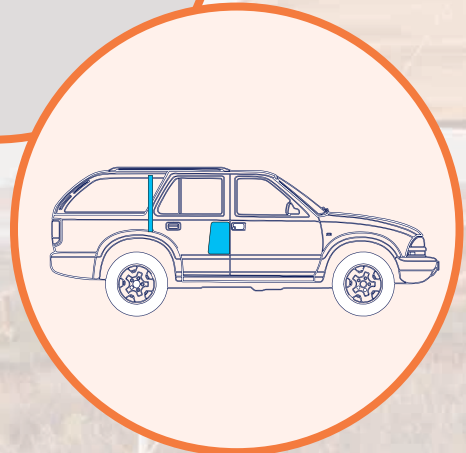
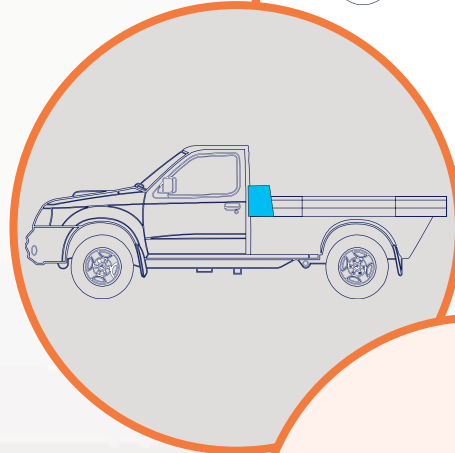
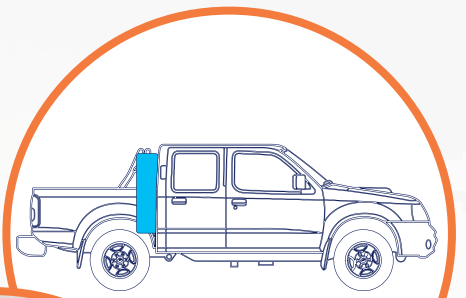
Transport the water you need, and use when you want, wherever you want with the convenient modern BOAB Poly Water Tanks.

Simple to fit, and easy to remove, BOAB tanks are available in a wide range of sizes and capacities to mount internally behind seats, in luggage areas, and across footwells, or even externally on top of roof-racks, in utes, vehicles and trailers.

Built tough, and durable enough to last a lifetime, BOAB water tanks are BPA free for safe storage of water.

A few key features include:

- Designed to withstand harsh off-road conditions
- Hard wall food-grade polyethylene
- Heavy duty durability with a lighter load weight



## DIESEL TANKS

The quick, convenient way to extend your vehicles range without any major modifications or large expense!

BOAB Poly Diesel Tanks are a 'drop in' installation with a simple gravity fuel feed.

## WATER & DIESEL TANK ACCESSORIES

A wide range of accessories available to suit Water and Fuel Tanks including Filler Caps, Hoses, Ventilation Caps, Taps, Pumps, Clamps and Hose Fittings.

# POLY DIESEL TANKS

Part No.	Capacity	Description	Weight	Height	Width	Length
FTP40FW	40L	Poly Diesel Tank, Footwell	5Kg	190mm	250mm	1200mm
FTP40J	40L	Poly Diesel Tank, Double Jerry Can	3Kg	335mm	335mm	470mm
FTP48V	42L	Poly Diesel Tank, Vertical	7Kg	600mm	75mm	1295mm
FTP45FV	45L	Poly Diesel Tank, Vertical or Flat	8Kg	580mm	90mm	1090mm
FTP50T	50L	Poly Diesel Tank, Taper	5Kg	350mm	200mm	1000mm
FTP55U	55L	Poly Diesel Tank, Rectangular	6Kg	310mm	195mm	1120mm
FTP60FV	58L	Poly Diesel Tank, Vertical or Flat	6Kg	235mm	345mm	840mm

## 40L

**DIESEL**

Part No.	Weight	Height	Width	Length
FTP40FW	5Kg	190mm	250mm	1200mm

### Poly Diesel Tank, Footwell

Shaped to fit in footwell behind front seats.  
 Ribbed top is strong enough to support items stored on top of tank.  
 Screw cap filler. 1/2" BSPT brass outlet each end.  
 Nutserts for handles & mounts.  
 Tunnel cutout dimensions: 110mm height x 420mm width at base.  
 Console cutout dimensions: 60mm height x 200mm width.

**FOOTWELL**



## 40L

**DIESEL**

Part No.	Weight	Height	Width	Length
FTP40J	3Kg	335mm	335mm	470mm

### Poly Diesel Tank, Double Jerry Can

Double jerry can shape and size.  
 Use as stand-alone tank or built in.  
 Supplied with screw filler cap.  
 Brass vent and brass outlet for 10mm hose.

**DOUBLE JERRY CAN**



## 42L

**DIESEL**

Part No.	Weight	Height	Width	Length
FTP48V	7Kg	600mm	75mm	1295mm

### Poly Diesel Tank, Vertical

Vertical design with wheel arch cut-outs for use in most wagons and utes.  
 Screw cap filler. 1/2" BSPT brass outlet in recess.  
 Cut out dimensions: 275mm height x 200mm width.

**VERTICAL**



## 45L

**DIESEL**

Part No.	Weight	Height	Width	Length
FTP45FV	8Kg	580mm	90mm	1090mm

### Poly Diesel Tank, Vertical or Flat

Spigot filler neck allows mounting vertically behind seats and in front of ute trays, or flat on roof racks, ute trays or under false floors.  
 Remote or close-coupled filler cap.  
 1/2" BSPT brass outlet and breather fittings.  
 Spigot suits 38mm ID hose. Filler kit FTPFK1 optional.  
 Base Dimensions: 985mm length

**VERTICAL OR FLAT**



<b>50L</b>	Part No.	Weight	Height	Width	Length
	FTP50T	5Kg	350mm	200mm	1000mm

**DIESEL** Poly Diesel Tank, Taper

**TAPER**



Universal fit with taper design to maximise space.  
Ideal for installation behind seats, in wagons or a ute tray.  
Screw cap filler. 1/2" BSPT brass outlet.  
Top dimensions: 350mm height x 150mm width x 1000mm length.

<b>55L</b>	Part No.	Weight	Height	Width	Length
	FTP55U	6Kg	310mm	195mm	1120mm

**DIESEL** Poly Diesel Tank, Rectangular

**RECTANGULAR**

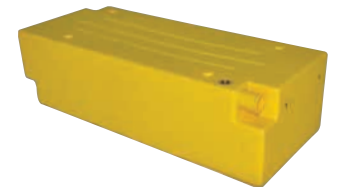


For use in ute trays, built-in and other applications.  
Pump or gravity feed.  
Supplied with screw cap filler.  
Brass vent and brass outlet for 10mm hose.

<b>58L</b>	Part No.	Weight	Height	Width	Length
	FTP60FV	6Kg	235mm	345mm	840mm

**DIESEL** Poly Diesel Tank, Vertical or Flat

**VERTICAL OR FLAT**



Spigot filler neck for flat or upright mounting and concealment in storage system or ute canopy with remote hose filler.  
Remote or close-coupled filler cap.  
1/2" BSPT brass outlet and breather fittings.  
Spigot suits 38mm ID hose.  
Nutserts for mounting. Filler kit FTPFK1 optional.

## POLY DIESEL TANK ACCESSORIES

Part No.	Description
FTUCAP	Vented cap to suit water and diesel tanks.
FTUVK	Vent extension kit, joins to vehicle system.
FTU55PK	Fuel hose kit. 1.5M, 10mm hose and stainless steel ball valve.
FTPFK1	Diesel filler kit suits: FTP45FV / FTP60FV. Includes elbow hose, 2 x clamps and flush filler cap.



# POLY WATER TANKS

Part No.	Capacity	Description	Weight	Height	Width	Length
WTP20JT	20L	Poly Water Tank, Jerry Can	2Kg	470mm	160mm	350mm
WTP40UTE	40L	Poly Water Tank, Under Tray	5Kg	375mm	265mm	520mm
WTP40FW	40L	Poly Water Tank, Footwell	5Kg	375mm	265mm	520mm
WTP40J	40L	Poly Water Tank, Double Jerry Can	3Kg	335mm	335mm	470mm
WTP48V	42L	Poly Water Tank, Vertical	7Kg	600mm	75mm	1295mm
WTP45FV	45L	Poly Water Tank, Vertical or Flat	8Kg	580mm	90mm	1090mm
WTP50T	50L	Poly Water Tank, Taper	5Kg	350mm	200mm	1000mm
WTP55U	55L	Poly Water Tank, Rectangular	5Kg	310mm	195mm	1120mm
WTP60FV	58L	Poly Water Tank, Vertical or Flat	6Kg	235mm	345mm	840mm
WTP80F	80L	Poly Water Tank, Under Tray	11Kg	115mm	805mm	1070mm
WTP120U	120L	Poly Water Tank, Rectangular	9Kg	335mm	500mm	815mm

20L WATER	Part No.	Weight	Height	Width	Length
	WTP20JT	2Kg	470mm	160mm	350mm

## Poly Water Tank, Standard Jerry Can

Standard jerry can size, designed to fit in most holders however features an easy-fill cap and convenient protected tap at the base. Includes plastic tap that can be removed to allow use of alternative hoses or taps. Uses 1/2" BSPT fitting.

### STANDARD JERRY CAN



40L WATER	Part No.	Weight	Height	Width	Length
	WTP40UTE	5Kg	375mm	265mm	520mm

## Poly Water Tank, Under Tray

Taper design to mount under ute or truck tray next to wheel. Dual outlets for left or right hand use. Includes universal mounting brackets, filler cap and tap. Base dimensions: 375mm length.

### UNDER TRAY



40L WATER	Part No.	Weight	Height	Width	Length
	WTP40FW	5Kg	190mm	250mm	1200mm

## Poly Water Tank, Footwell

Designed to fit in footwell behind front seats. Ribbed top is strong enough to store items on top of tank. Screw cap filler. 1/2" BSPT brass outlet each end. Nutserts for handles & mounts. Tunnel cutout dimensions: 110mm height x 420mm width at base. Console cutout dimensions: 60mm height x 200mm width.

### FOOTWELL



40L WATER	Part No.	Weight	Height	Width	Length
	WTP40J	3Kg	335mm	335mm	470mm

**DOUBLE JERRY CAN**

**Poly Water Tank, Double Jerry Can**

Double jerry can shape and size.  
 Designed to be used as a stand-alone tank or built-in tank.  
 Screw cap filler.  
 Outlet to suit 12mm hose.



42L WATER	Part No.	Weight	Height	Width	Length
	WTP48V	7Kg	600mm	75mm	1295mm

**VERTICAL**

**Poly Water Tank, Vertical**

Vertical design with wheel arch cut-outs for use in most wagons and utes.  
 Screw cap filler.  
 1/2" BSPT brass outlet in recess.  
 Cutout dimensions: 275mm height x 200mm width.



45L WATER	Part No.	Weight	Height	Width	Length
	WTP45FV	8Kg	580mm	90mm	1090mm

**VERTICAL OR FLAT**

**Poly Water Tank, Vertical or Flat**

Spigot filler neck for vertical mount behind seats, in front of ute trays, flat on racks, trays or under false flooring.  
 Remote or close-coupled filler cap.  
 1/2" BSPT Brass outlet and breather fittings.  
 Spigot suits 38mm ID hose.  
 Filler kit WTPFK1 optional.  
 Base dimensions: 985mm length.



50L WATER	Part No.	Weight	Height	Width	Length
	WTP50T	5Kg	350mm	200mm	1000mm

**TAPER**

**Poly Water Tank, Taper**

Universal fit with taper design to maximise space.  
 Ideal for use behind seats, in wagons, or in ute trays.  
 Screw cap filler.  
 1/2" BSPT brass outlet.  
 Top dimensions: 350mm height x 150mm width x 1000mm length.



55L WATER	Part No.	Weight	Height	Width	Length
	WTP55U	5Kg	310mm	195mm	1120mm

**RECTANGULAR**

**Poly Water Tank, Rectangular**

Universal design for use on roof racks and ute trays.  
 Screw cap filler.  
 Outlet to suit 12mm hose.





**58L****WATER**

Part No.	Weight	Height	Width	Length
WTP60FV	6Kg	235mm	345mm	840mm

**Poly Water Tank, Vertical or Flat**

**VERTICAL OR FLAT**

Spigot filler neck for flat or upright mounting and concealment in storage system or ute canopy with remote hose filler.  
 Remote or close-coupled filler cap.  
 1/2" BSPT brass outlet and breather fittings.  
 Spigot suits 38mm ID Hose.  
 Nutserts for mounting.  
 Filler kit WTPFK1 optional.

**80L****WATER**

Part No.	Weight	Height	Width	Length
WTP80F	11Kg	115mm	805mm	1070mm

**Poly Water Tank, Under Tray**

**UNDER TRAY**

Heavy duty construction for use under off-road camper trailers, caravans and beneath ute trays. Supplied as a bare tank with no fittings, mountings or hoses.  
 1.5" BSPT thread with an adjacent 1/2" BSPT insert to attach a fast fill breather line if necessary. 2 x 1/2" BSPT outlets.

**120L****WATER**

Part No.	Weight	Height	Width	Length
WTP120U	9Kg	335mm	500mm	815mm

**Poly Water Tank, Rectangular**

**RECTANGULAR**

Large capacity tank ideal for use in ute trays, truck trays, and some camper trailer applications.  
 Screw cap filler.  
 Outlet to suit 12mm hose.

**Part No.****Poly Water Tank Accessories**

WTPUMP12V	12V pump with auto pressure switch. Electric water pump 3.8LPM. 35 PSI cut-off.
WTPHK3	Hose kit for use with 12v pump. 2M, 10mm reinforced hose & all fittings. 5 Clamps, 3 tail fittings & mini ball valve. Fittings in diesel-safe plastic.
WTPHK2	Hose kit to suit most BOAB water tanks. 1.5M, 12mm hose, tap and fittings.
WTPCAP	Replacement cap.
WTPFK1	Water filler kit suits: WTP45FV / WTP60FV Includes elbow hose, 2 x clamps and flush filler cap.
WTPVK	Vent kit for poly water tanks, includes hose, fittings, hose clamps and filter to suit WTP45FV and WTP60FV. Other tanks will require drilling and tapping.

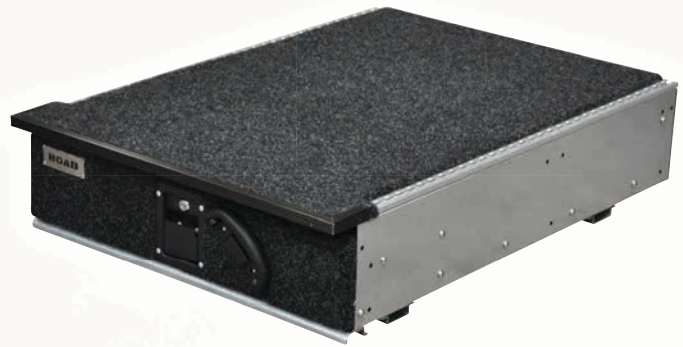


# ROLLER DRAWERS

Installing roller drawers in your vehicle gives you easier access, extra security and added safety.

Work or play, you will be able to store gear where it's out of sight, easy to get to and won't be rolling around!

- Unique easy-fit adjustable mounting system suits most vehicles
- Rattle-free construction
- Sealed roller bearings
- All metal drawers with felt lining
- Black marine carpet exterior
- Waterproof plywood top-deck
- Lockable drawers
- Slam-shut catches
- Built-in anchor track tie-down system
- Built-in 'safety gap' prevents injury
- Easily transferred between vehicles
- Optional side filler panels



## DOUBLE DRAWER - FIXED TOP OR FRIDGE SLIDER

The double drawer with the features, fit and finish you want!

Choose from solid fixed top, or left or right-hand side fridge sliders.

Incorporates the latest BOAB feature - a built-in, multi-point anchor track tie-down system for the ultimate in cargo carrying versatility.



## SINGLE DRAWER - STAND ALONE OR STACKABLE

Perfect for smaller vehicles or in applications where you need to retain vertical height space in your load area. Use as a stand-alone unit or stack a pair together for twin-drawer storage.

Hassle-free installation, and easy conversion to stacked pairs with a simple 'drill and bolt-on' job after removing lower drawer's carpeted top deck.

Single drawers can also be installed on BOAB double drawer for maximum in safe, secure convenient storage space.



## UTE DRAWERS - DOUBLE OR SINGLE

'Extra-long' 1300mm drawers designed specifically for use in ute or tray beds. Sturdy, weatherproof top with built-in anchor track tie-down system makes securing a load easy while lockable drawers keep your gear safe.

Choose from fixed or sliding-top double drawer units or stackable single drawer units. Lockable security, maximum utility, real quality, and great looks!



*Optional side filler panels for that factory-fitted look. Available to suit a growing range of popular vehicles.*



*Unique anchor track tie-down system for multi-point mounting. Single comes with four rings, double drawer with eight.*



*Lockable slam-shut catches. Sturdy ergonomic handles. Built-in safety gap on sliding drawers for prevention of hand injuries.*



# ROLLERS DRAWERS - DOUBLE & SINGLE

Part No.	Description	Height	Width	Length	
RDUDEF	Land Rover Defender 90 & 110 TD5-TDI roller drawer with RH wing kit. Will fit Puma models without wing kit. Built-in anchor track tie-down system.	230mm	750mm	990mm	

Part No.	Description	Height	Width	Length	
RDUJEP	Jeep JK Wrangler drawer with sliding top. Built-in anchor track tie-down system. Wing kit included.	350mm	950mm	710mm	

Part No.	Description	Height	Width	Length	
RDUNID	Fixed-top double roller drawer. Universal fitment suits large wagons and dual cabs. Built-in anchor track tie-down system.	275mm	1070mm	990mm	

Part No.	Description	Height	Width	Length	
RDUNIDL	Double roller drawer with left-hand fridge slider. Suits large wagons and dual cabs. Built-in anchor track tie-down system. Will suit LC100, LC200, LC80, GU Patrol & most dual cabs.	275mm	1070mm	990mm	

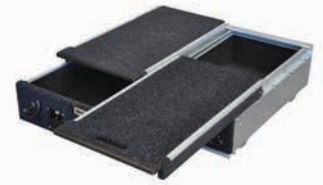
Part No.	Description	Height	Width	Length	
RDUNIDR	Double roller drawer with right-hand fridge slider. Universal fitment, suits large wagons and dual cabs. Built-in anchor track & Tie-down system. Will suit LC100, LC200, LC80, GU Patrol & most dual cabs.	275mm	1070mm	990mm	

Part No.	Description	Height	Width	Length	
RDUNIDP	Fixed top double roller drawer. Universal fitment suits Prado and medium wagons. Built-in anchor track tie-down system.	275mm	1010mm	900mm	

Part No.	Description	Height	Width	Length	
RDUNIDPL	Double roller drawer with left-hand fridge slider. Universal fitment suits Prado & medium wagons. Built-in anchor track tie-down system.	275mm	1010mm	900mm	

# ROLLERS DRAWERS - DOUBLE & FIXED TOP

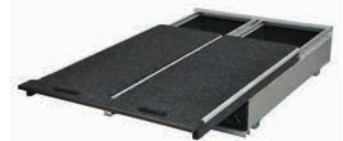
Part No.	Description	Height	Width	Length
RDUNIDPR	Double roller drawer with right-hand fridge slider. Universal fitment suits Prado and medium wagons. Built-in anchor track tie-down system.	275mm	1010mm	900mm



Part No.	Description	Height	Width	Length
RDUNIDUTE	Fixed top double roller drawer. Universal fitments suits ute & traybacks. Built-in anchor track tie-down system.	285mm	1000mm	1300mm



Part No.	Description	Height	Width	Length
RDUNIDUTES	Double roller drawer with sliding top. Suits ute or tray-backs. Built-in anchor track tie-down system.	285mm	1000mm	1300mm



Part No.	Description	Height	Width	Length
RDUNIS	Fixed top single roller drawer. Universal fitment suits large wagons, and dual cab utes. Built-in anchor track tie-down system.	275mm	535mm	990mm



Part No.	Description	Height	Width	Length
RDUNISP	Fixed top single roller drawer. Universal fitment suits Prado and medium wagons. Built-in anchor track tie-down system.	275mm	505mm	900mm



Part No.	Description	Height	Width	Length
RDUNISUTE	Fixed top single roller drawer. Suits ute or traybacks. Built-in anchor track tie-down system.	285mm	500mm	1300mm



# SINGLE WING KITS

**SINGLE WING KITS TO SUIT ROLLER DRAWER MODELS:  
RDUNIS, RDUNID, RDUNIDL, RDUNIDR.**

Fitment Style	Part No.	Suits
Left-hand Fitment	RDWKS100L	Landcruiser 100
Left-hand Fitment	RDWKS200L	Landcruiser 200
Left-hand Fitment	RDWKS DCL	Dual Cab †
Left-hand Fitment	RDWKS GUL	Nissan GU
Left-hand Fitment	RDWKS UNIL	Universal Design*
Right-hand Fitment	RDWKS UNIR	Universal Design*



Left-Hand

Right-Hand

**SINGLE WING KITS TO SUIT ROLLER DRAWER MODELS:  
RDUNISP, RDUNIDP, RDUNIDPL, RDUNIDPR.**

Fitment Style	Part No.	Suits
Left-hand Fitment	RDWKSP120L	Prado 120 Series
Left-hand Fitment	RDWKSPUNIL	Universal Design*
Right-hand Fitment	RDWKSPUNIR	Universal Design*

**SINGLE WING KITS TO SUIT ROLLER DRAWER MODELS:  
RDUNISUTE, RDUNIDUTE, RDUNIDUTES**

Fitment Style	Part No.	Suits
Left-hand Fitment	RDWKSUTEL	Universal Design*
Right-hand Fitment	RDWKSUTER	Universal Design*

# DOUBLE WING KITS

**DOUBLE WING KITS TO SUIT ROLLER DRAWER MODELS:  
RDUNID, RDUNIDL, RDUNIDR.**

Part No.	Suits
RDWKD80	Landcruiser 80 Series
RDWKD100	Landcruiser 100 Series
RDWKDDC	Landcruiser 100 Series 1998-05 GXL Models (No Air-Con) Wide-Body Dual Cab - Colorado, Dmax Ranger, Hilux Etc †
RDWKD200	Landcruiser 200 Series
RDWKDGU	Nissan GU
RDWKDUNI	Universal Design*



**DOUBLE WING KITS TO SUIT ROLLER DRAWER MODELS:  
RDUNIDP, RDUNIDPL, RDUNIDPR.**

Part No.	Suits
RDWKDP120	Toyota Prado 120
RDWKDP150	Toyota Prado 150 (7 Seat with rear air-con)
RDWKDPUNI	Universal Design*

**DOUBLE WING KITS TO SUIT ROLLER DRAWER MODELS:  
RDUNIDUTE, RDUNIDUTES**

Part No.	Suits
RDWKDUTE	Universal Design*

\*Supplied with unfinished plywood side panel for modification to suit application. †Some modification may be required.

# CARGO UTE SLIDES

## Part No. Cargo Ute Slide 900mm

RDS900

BOAB Cargo Ute Floor Slide - 900L x 1000W HD full metal construction. Gives easy access to items including camping gear and fridges stored in your luggage area. Includes removable carpet. Suits most Wagons, Dual Cab Utes and Traybacks. WLL 150kg when fully extended.



## Part No. Cargo Ute Slide 1300mm

RDS1300

BOAB Cargo Ute Floor Slide - 1300L x 1000W HD full metal construction. Gives easy access to items including tools, equipment & fridges stored in the tray area of utes. Suits most Dual Cab Utes and Traybacks. Includes removable carpet. Extends 890mm. WLL 150kg when fully extended.



## Part No. Cargo Ute Slide 1500mm

RDS1500

BOAB Cargo Ute Floor Slide - 1500L x 1100W heavy duty full metal construction. Gives easy access to items including tools, equipment & fridges stored in the tray area of utes. Suits most Dual Cab Utes and Traybacks. Includes removable carpet. WLL 150kg when fully extended.



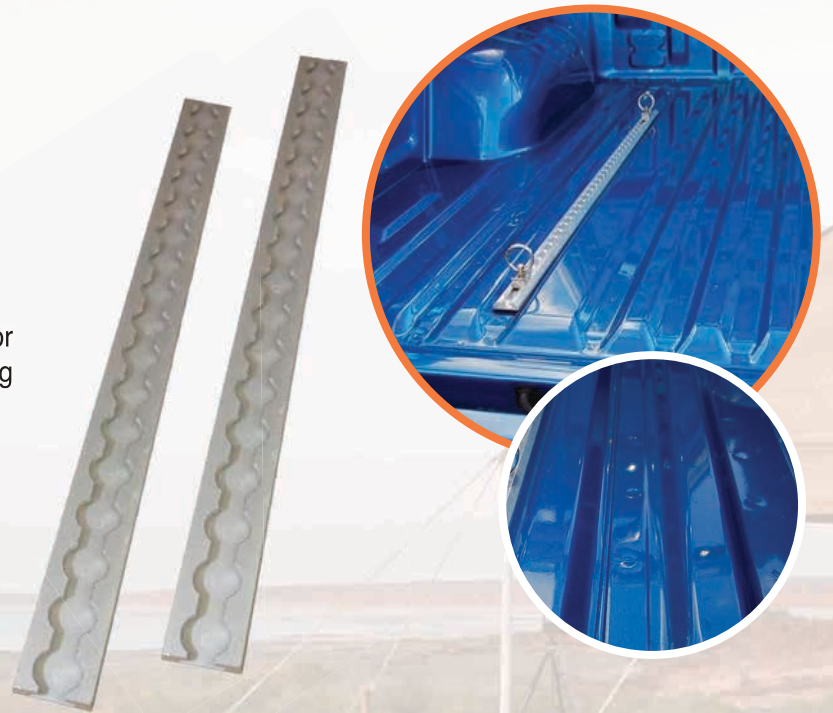
# ANCHOR TRACKS RANGE FOR SECURING & TIE DOWN

## ANCHOR TRACKS

Anchor tracks are an innovative and easy way to secure and tie down goods in the back of utes, wagons, and four wheel drives.

The system functions using a 'track' system which is made from machined aluminium extrusion anchor track with multiple locations into which the matching load rings can be inserted.

Load rings can be positioned anywhere along the track. Anchor tracks can be mounted using countersunk head screws and nyloc nuts.



## TIE-DOWN ACCESSORIES

A wide range of accessories are available to use with the anchor track system including load rings, tie down rings, flush tie down rings, eye bolts, and anchor track mounting accessories.



Part No.	Eye Bolt Tie Down Point (Pair)
OLTD1	Fitted with 8mm stainless steel bolt and washer, for use with tie down straps to secure loads. Ideal for platform roof-racks with T-Slot channels.
Part No.	Lashing Ring (Pair)
OLTD2	Great for use on roller drawer tops, trailers and utes to create a strong new tie down location that folds down when not in use.





# ANCHOR TRACK SYSTEM & ACCESSORIES

Part No.	<b>Flush Tie Down Ring (Single)</b>	
OLTD3	<p>Recess into trailer or truck trays to provide a flush fitting. Very secure tie down point. 10mm diameter. Spring return. Dimensions: 100mm x 90mm x 30mm WLL of 1500Kg.</p>	
Part No.	<b>Load Rings (Pair)</b>	
OLTD4	<p>Quick release load rings to suit anchor track. Anodised aluminium clip with stainless steel ring. Supplied as a pair. WLL Ranges from 230-650Kg depending on pull angle.</p>	
Part No.	<b>Load ring and Base (Single)</b>	
OLTD5	<p>Quick release single load ring and smooth edge mounting base (no bolts supplied). WLL ranges from 230-650Kg, depending on pull angle.</p>	
Part No.	<b>Anchor Track 150mm</b>	
OLTD6	<p>A 150mm section of anchor track pre-drilled in 3 locations. Load ring and 2 bolts supplied. Load ring can be positioned along the track.</p>	
Part No.	<b>Anchor Track 1M</b>	
OLTD7	<p>Machined aluminium extrusion anchor track with multiple locations into which the matching Load Rings can be inserted. Load rings (2 Included), can be positioned anywhere along the track. Anchor track can be mounted using countersunk head screws and nyloc nuts included. Anodised clear finish. Also available in black (Part No. OLTD9)</p>	
Part No.	<b>Anchor Track 2M</b>	
OLTD8	<p>Machined aluminium extrusion anchor track with multiple locations into which the matching load rings can be inserted. Load rings can be positioned anywhere along the track. No mounting holes drilled. Load rings not Included.</p>	

# INSECT NETS, VEHICLE ORGANISERS & SECURING SOLUTIONS

## INSECT NETS

When travelling long distances and remote locations, you will often get to your final destination and realise the front of your vehicle is covered in every type of insect possible, and also have no way of cleaning up the mess.

BOAB Mesh Insect Screens are ideal for preventing this by protecting the front grill area of your vehicle.



## TRAVEL SAFELY

Cargo Barriers and Roof Nets are ideal for securing your goods whilst on your off-road expedition. A wide range of securing solutions are available including in-vehicle and external.

## STAY ORGANISED

Organisation is key when you are planning your next off-road trip. When everything is packed into your vehicle, it can be difficult to remember where certain things are.

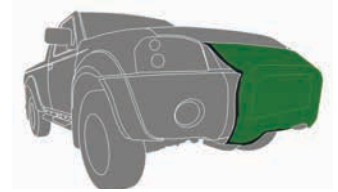
BOAB Cutlery, Seat, & Tool Organisers, and visor wallets help you organise your goods so they are easy to access and find.



# INSECT NETS

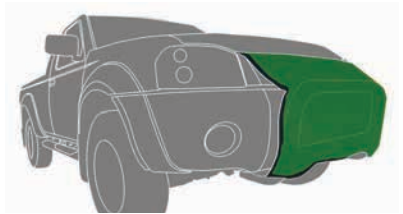
Part No.	Insect Screen Small
----------	---------------------

OLISS Mesh insect screen made from high quality black “shade cloth” material with a full border seam and elastic cords fitted with hooks for simple installation & removal.  
Dimensions: 500mm x 800mm (Can be used either way).



Part No.	Insect Screen Large
----------	---------------------

OLISL Mesh insect screen made from high quality black “shade cloth” material with a full border seam and elastic cords fitted with hooks for simple installation & removal.  
Dimensions: 800mm x 1000mm (Can be used either way).



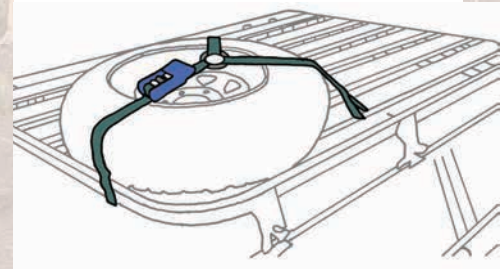
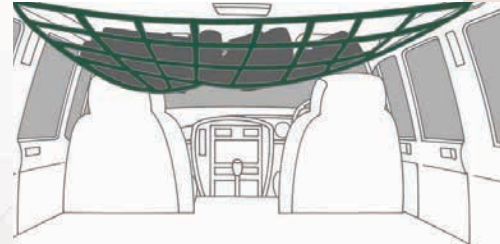
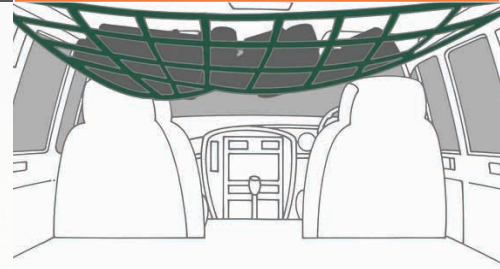
Part No.	Wading Screen & Seed Net Combo
----------	--------------------------------

LRSN Wading Sheet can be rolled up to reveal Insect/Seed Net.  
Suits vehicles such as Landrover Defender, Landcruiser, etc.



# VEHICLE SECURING SOLUTIONS

<b>Part No.</b>	<b>Roof Net Small</b>
OLRNS	<p>Webbing net with metal end supports &amp; adjustable straps. Attaches across vehicle under the roof lining to provide a dust-free storage solution for pillows, jackets, and other clothing. Attach to grab handles or create eye-bolt mountings. Fitted with sewn-in steel support at each end. High-tech, light-weight, duckbill buckle with teeth moulded in nylon. 125Kg break strength. Dimensions: 370mm wide x 1200mm Long.</p>
<b>Part No.</b>	<b>Roof &amp; Barrier Net Large</b>
OLRNL	<p>Webbing net with metal end supports &amp; adjustable straps. Attaches across vehicle under the roof lining to provide a dust-free storage solution for pillows, jackets, and other clothing. Attach to grab handles or create eye-bolt mountings. 125Kg break strength. Dimensions: 900mm wide x 1100mm Long.</p>
<b>Part No.</b>	<b>Cargo Barrier Net</b>
OLBRLR	<p>Webbing barrier Net for larger 4WD with securing straps and metal mounting rings. Ideal for extra protection when a metal cargo barrier is not possible or desirable. High-tensile 25mm polyester webbing. 125Kg break strength. Dimensions: 1400mm across the base, 1050mm across the top, 650mm high.</p>
<b>Part No.</b>	<b>Wheel Tie Down</b>
OLWTD	<p>3 Leg strap and ratchet mechanism to securely hold a spare wheel or other difficult objects. Attach to a roof-rack using eye bolts or similar. Each strap has a non-slip metal buckle and lots of length to suit larger wheels.</p>



## WINCH DAMPENER

<b>Part No.</b>	<b>Winch Dampener</b>
RGWRD1	<p>Simple, light weight and easy to use Winch Cable Dampener. Manufactured from heavy duty vinyl. Designed to make vehicle recovery safer. An endless loop design through which you pass the winch cable. Pockets allow sand or rocks for ballast to be added, then removed for flat storage.</p>



# VEHICLE ORGANISERS

**Part No. Seat Organiser**

**OLSO** Simple light-weight canvas seat organiser with 4 large pockets. Hangs over headrest supports and secures with adjustable straps. Easy storage for maps, books, directories etc.



**Part No. Cutlery Organiser**

**OLCO4** Canvas pouch that folds to a compact and rattle-free storage solution for your camping cutlery and cooking tools. Opens to a large area with hooks to hang in a convenient location. Sufficient pockets for a 4 person setting. Dimensions when open: 390mm x 990mm.



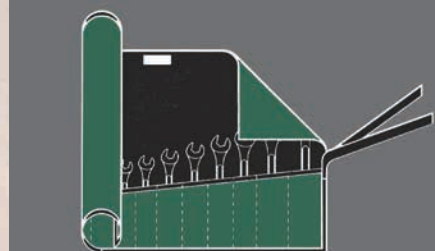
**Part No. Rubbish / Duffle Bag**

**OLCRB** Canvas bag with a draw cord top opening. Ideal as outer protector for camping rubbish or for general storage. Accepts a standard 56L plastic garbage bag which ensures the inside of the canvas bag doesn't get smelly and the plastic liner is protected for the trip home. Adjustable strap for hanging. Dimensions: 725mm high x 300mm diameter.



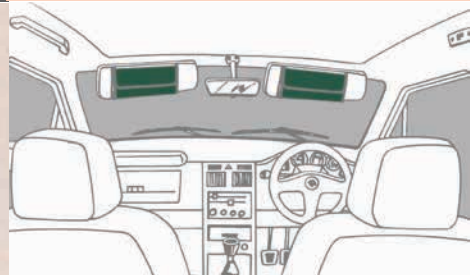
**Part No. Tool Organiser**

**OLTR** Canvas pouch to store necessary tools which folds and can be rolled into compact and rattle free storage. Contains 13 pockets ranging from 130mm - 190mm height. Dimensions when open: 800mm wide x 480mm high.



**Part No. Visor Wallet**

**OLVW** Canvas wallet for convenient storage of notebook, pens, business cards, logbook etc. Secure with adjustable elastic, velcro straps on sunvisors for out of sight storage. Dimensions when closed: 300mm wide x 140mm high. 1 large pocket, 2 small pockets, pen holder & 2 clear PVC Pockets.



# KEEP UP WITH THE LATEST BOAB NEWS

## **Dolium Facebook**

Keep up-to-date with the latest BOAB News, Installs, Tips, Technical Information & More at our Dolium Facebook page: [www.facebook.com/doliumaus](http://www.facebook.com/doliumaus)

## **Dolium Instagram**

Browse through our gallery of BOAB Smart Storage Solutions on Instagram. Visit: [www.instagram.com/dolium\\_au](http://www.instagram.com/dolium_au) or follow @dolium\_au

## **Dolium Newsletter**

Are you interested in receiving weekly emails from Dolium with the latest offers & Information on BOAB Products? Subscribe by simply emailing [marketing@ae4a.com.au](mailto:marketing@ae4a.com.au) with your name & email address.



[www.dolium.com.au](http://www.dolium.com.au)



# Dolium

Wholesale Distribution of Automotive Products



**BOAB**

**OFF-ROAD SMART STORAGE SOLUTIONS**

[www.dolium.com.au](http://www.dolium.com.au)

## Automotive Electrical & 4WD Accessories



**For East Coast Inquiries:**  
Phone: 07 5540 7877 | Fax: 07 5540 7977  
Email: [sales.ec@ae4a.com.au](mailto:sales.ec@ae4a.com.au)

Visit Our Website  
[www.dolium.com.au](http://www.dolium.com.au)

**For West Coast Inquiries:**  
Phone: 08 9358 7000 | Fax: 08 9458 1006  
Email: [sales.wc@ae4a.com.au](mailto:sales.wc@ae4a.com.au)

Facebook  
[facebook.com/doliumaus](https://facebook.com/doliumaus)

Instagram  
[@dolium\\_australia](https://instagram.com/dolium_australia)